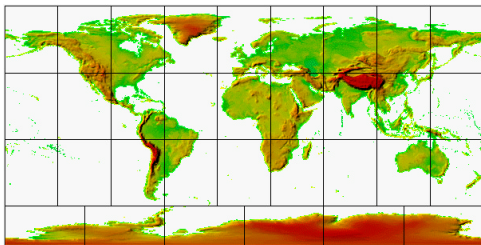


# Lesson 10: Model GTOPO30 Data

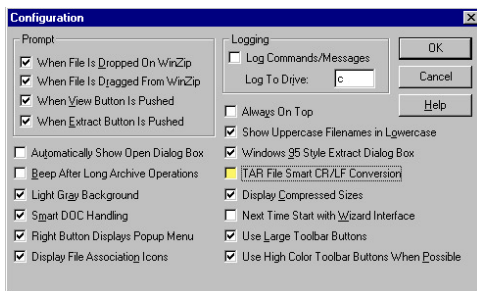
**Lesson Goal:** Download and convert GTOPO30 DEM data from the USGS site and convert and process this data.

**What You Will Need:** A Pentium class PC with 64 MB of RAM and 120 MB of free hard drive space, an Internet connection, ArcView GIS 3.1 or higher, WinZip, and the ArcView Spatial Analyst and ArcView 3D Analyst extensions.

**Data and/or Utilities:** The sample data set that accompanies this tutorial, available from the *ArcUser Online* Web site.



GTOPO30 data is available from the USGS EROS Data Center Distributed Active Archive Center.



Use WinZip to uncompress the gtopo30 data files downloaded from the USGS site. Make sure the TAR File Smart CR/LF Conversion option is turned **off**.

This lesson explains how to download the Global 30-Arc-Second (GTOPO30) digital elevation model (DEM) data available from the U.S. Geological Survey's Web site. This data can be converted to grid format using ArcView GIS with the ArcView Spatial Analyst extension. You will learn how to use the Map Calculator in ArcView Spatial Analyst to apply several formulas that will allow ArcView GIS to correctly recognize negative values and modify other aspects of the data. With these adjustments made, the data can be used with the ArcView 3D Analyst extension to create two- and three-dimensional models and export images of these models in formats suitable for use with other programs and on the Web.

## The GTOPO30 Data Set

The GTOPO30 data set, completed in 1996, was developed by the U.S. Geological Survey's EROS Data Center with funding or data contributions from the National Aeronautics and Space Administration (NASA), the United Nations Environment Programme/Global Resource Information Database, the U.S. Agency for International Development, the Instituto Nacional de Estadística Geográfica e Informática of Mexico, the Geographical Survey Institute of Japan, Manaaki Whenua Landcare Research of New Zealand, and the Scientific Committee on Antarctic Research. Information on available coverages and ordering procedures for this data can be found on at the USGS Web site.

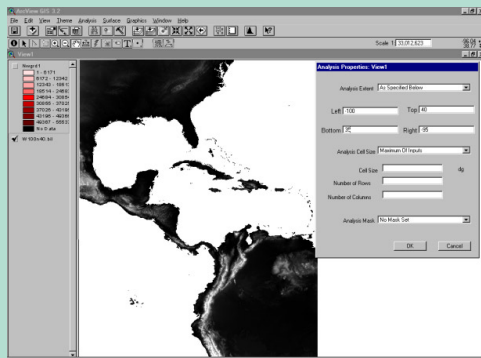
The GTOPO30 DEM raster data is primarily derived from the Digital Terrain Elevation Data (DTED) Level 1 data set produced by the National Imagery and Mapping Agency (NIMA) and ESRI's Digital Chart of the World. This data set covers an area that ranges between 90 degrees north to 90 degrees south latitude and between 180 degrees west to 180 degrees east longitude. The horizontal grid spacing is 30 arc-seconds (0.008333333 degrees or approximately 1 kilometer), resulting in a DEM with dimensions of 21,600 rows and 43,200 columns. The horizontal coordinate system is decimal degrees of latitude and longitude referenced to World Geodetic System of 1984 (WGS84). The vertical units represent elevation in meters above mean sea level. The elevation values range from -407 to 8,752 meters.

Ocean areas have been masked as "no data" and have been assigned a value of -9999. Low-lying

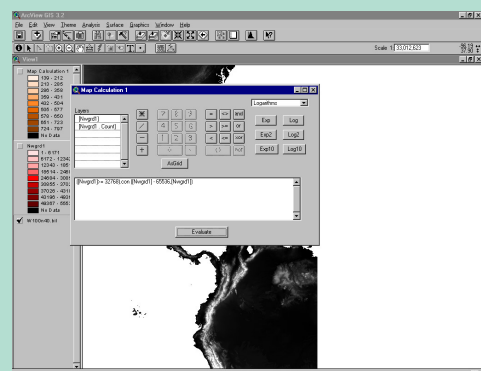
coastal areas have an elevation of at least 1 meter. If the ocean value is changed from -9999 to 0, the land boundary will be maintained. Due to the nature of the raster structure of the DEM, small islands in the ocean less than approximately 1 square kilometer are not represented.

## Downloading and Converting DEM Data

Before unzipping the data for this lesson, create a new folder named gtopo30 with a subdirectory folder called grfiles to hold downloaded data files. Go to the USGS EROS Data Center Distributed Active Archive Center ([edcdaac.usgs.gov/gtopo30/gtopo30.html](http://edcdaac.usgs.gov/gtopo30/gtopo30.html)). The site uses a graphical interface to let visitors select tiles to download. This exercise uses tile w100n40, which is the second tile down and third tile over from the left in the grid.



Change the working area by choosing Analysis > Properties and specifying the extent in the dialog box.



Use the Map Calculator to apply a formula that will make ArcView GIS interpret integer data correctly.

1. Download the w100n40 to the gtopo30 folder. If the file downloads with the name w100n40\_tar.tar, rename it w100n40.tar.gz using Windows Explorer or another file manager. Winzip is required to decompress this file. Choose Options > Configuration to make sure the Tar Smart CF/LF Conversion option is turned off in Winzip before extracting this file. If this default setting is not changed, carriage return characters may be converted to CF/LR pairs, which will create corrupted files.
2. Decompress the w100n40.tar.gz file into the gtopo30 folder. This folder should contain 11 files all beginning with w100n40 and ending with a variety of extensions.
3. Rename the w100n40.dem to w100n40.bil. Renaming this file allows it to be imported as a Band Interleaved by Line (.BIL) image file.
4. Launch ArcView GIS and make sure the ArcView Spatial Analyst and ArcView 3D Analyst extensions are loaded.
5. Open a new project and view. Specify an image data source and add the w100n40.bil file to the view. Make this theme active and display it.
6. Convert the image to a grid by choosing Theme > Convert to grid from the menu. Save the output grid to the gtopo30/grfiles subfolder and accept the default name nwgrd1. Click on Yes in the dialog box to add nwgrd1 to the current view. Make nwgrd1 active. This grid contains information for an area 15 degrees by 25 degrees. For most users it is advisable to work with only a portion of this area at any one time.
7. Resize the working area by choosing Analysis > Properties from the menu. In the Analysis Properties: View 1 dialog box set Analysis Extent to As Specified Below. Set Left to -100, Right to -95, Bottom to 35, and Top to 40. The working area will now be located in the upper left corner of the view.
8. The GTOPO30 DEM is 16-bit signed integer data in simple binary raster format. Previous modeling articles in *ArcUser* magazine used the one-degree USGS DEM data, which is provided in ASCII format. The GTOPO30 files can be converted to ASCII by creating a grid, which was done in the previous step, and applying the following formula. Go to Analysis > Map

Calculator. Select Nwgrd1 from the list under Layers. In the formula box enter the following formula. Click on the Evaluate button when finished. A new theme, Map Calculations 1, will be added to the theme.

$([Nwgrd1] > = 32768).con([Nwgrd1] - 65536, [Nwgrd1])$

- In this formula, 32,768 represents 2 to the 15th power and 65,536 represents 2 to the 16th power. In the GTOPO30 DEM, 1 bit is used for the sign and 15 bits are used for the number. This means 2 to the 15th power is the maximum value that can be represented. ArcView GIS interprets the integer data as unsigned and uses all 16 bits for the number, thus placing values in the range 0 to 65,536. The formula is needed so that ArcView GIS properly recognizes the negative values in the data. Center the image and zoom to a comfortable level.

- GTOPO30 data files use the value -9999 to mask ocean areas. These values need to be changed to null. Close and reopen the Map Calculator. The new grid theme, Map Calculation 1, now appears in the Layers list. Maximize the view and make the Map Calculation 1 theme active. In the Map Calculator, enter the following equation in the formula box and click on the Evaluate button.

$([Map\ Calculation\ 1] = -9999).setnull([Map\ Calculation\ 1])$

- Make the new theme, Map Calculation 2, the only active and displayed theme in the view. The map units for this new grid are decimal degrees and the elevation is in meters.
- Save the project.

### Constructing Three-Dimensional Projections

Two methods for creating a rendered perspective using an overhead view and a three-dimensional terrain visualization are described here. Both methods use functionality that is built into ArcView Spatial Analyst or ArcView 3D Analyst.

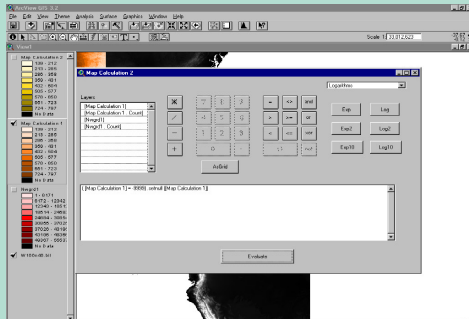
#### Rendered Perspective Overhead View

This method uses the Hillshade feature available in ArcView Spatial Analyst and ArcView 3D Analyst to produce an overhead view of rendered terrain.

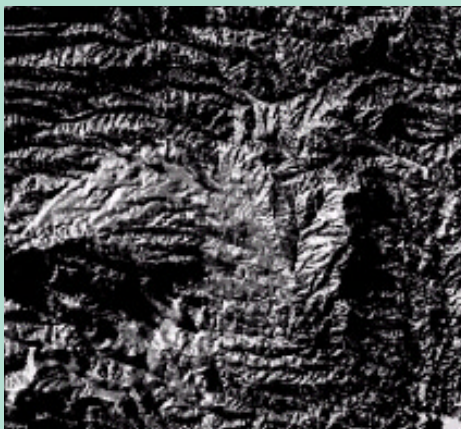
- With the previously created project and view open and the Map Calculation 2 theme active, choose Analysis > Map Calculator.
- Enter the following formula in the formula box and click on the Evaluate button.

$([Map\ Calculation\ 2]*0.004)$

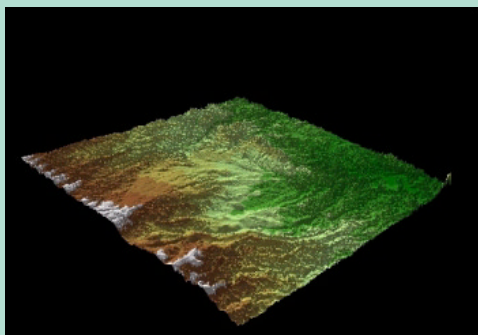
- Make the new theme, Map Calculation 3, active and choose Surface > Compute Hillshade from the menu.
- In the Compute Hillshade dialog, change Altitude to 55 and leave Azimuth to the default value of 315. Click on OK when finished.



The Map Calculator is also used to change ocean mask values of -9999 to null values.



Use Surface > Compute Hillshade to create a rendered perspective of the data.



Create three-dimensional visualizations of GTOPO30 data using the ArcView 3D Analyst extension.

*This lesson is based on an article written by Keith P. Barto that originally appeared in the July—September 2000 issue of ArcUser magazine.*

### Three-Dimensional Terrain Visualization

1. With the previously created project and view open, open a 3D Scene window by clicking on the 3D Scene icon in the main Project window. Position windows for view and 3D Scene so that each can be seen.
2. In View1, make the Map Calculation 2 theme active.
3. Choose Edit > Copy Themes from the view menu.
4. Make the 3D Scene view active and choose Edit > Paste.
5. Make sure the Map Calculation 2 theme in the 3D Scene window is active. Choose Theme > 3D Properties. In the 3D Theme Properties dialog box select Assign Base Heights by Surface and use calc2 as the surface. Check the box Show Shading for Features in the lower left side of the dialog box. Click on OK. Be patient. This process will take a minute or two. During this process the view window will either go blank or be very distorted because the horizontal component of the data is in decimal degrees and the vertical component is in meters.
6. Once the process is complete choose 3D Scene > Properties. In the 3D Properties dialog box select 1.5 from the drop-down box next to Vertical Exaggeration Factor and click on the Calculate then the OK buttons. Be patient. After a short time the GTOPO30 tile will be rendered in three dimensions in the 3D Scene view.
7. Double-click on the Map Calculation 2 theme in the 3D Scene legend to bring up the Legend Editor. Choose Terrain Elevation #2 from the drop-down box in the Color Ramp selection.
8. Rotate to the desired perspective. Choose 3D Scene > Properties to adjust Sun Azimuth and Sun Elevation in the 3D Scene Properties dialog box.

### Convert Three-Dimensional Views to Images

These three-dimensional images can be saved in JPEG or BMP format directly from ArcView 3D Analyst for use with other applications and on Web pages. These images can also be exported out of ArcView 3D Analyst in Virtual Reality Modeling Language 2.0 (VRML) format. VRML is a platform-independent format for sharing three-dimensional files on the Web.

#### Save in JPEG or BMP Format

Choose 3D Scene > Save as Image and choose the desired file format, JPEG or BMP, from the drop-down box. Specify the width for the output image and the height will be scaled to it. Provide an output file name and location.

#### Save in VRML Format

With the desired file open in ArcView 3D Analyst, choose File > Export to VRML 2.0. Keep the size of export files small, or they will not work well with Web browsers on PCs. Cosmoplayer from Cosmo Software seems to work the best with these files.

For more information on modeling data using ArcView GIS and its extensions, read *Extending ArcView GIS*, available from ESRI Press through the GIS Store.