

# Mapping and Charting Establishment Digital Response Section



A briefing map produced for Sierra Leone



Briefing map for Kosovo

The responsibility of providing base plant geomatic support to the Canadian Armed Forces was given to the Digital Response Section (DRS). DRS was created in 1998. The primary role of DRS within this organization is to provide rapid, one-of-a-kind specialty products that are not provided by the CF Map Depot. DRS provides a broad and more diverse range of products because of the uniqueness, urgency, and security of the information. The section has two components: classified and unclassified to handle the security level of the information being used to produce the products.

Mapping and Charting Establishment (MCE) provides baseplant support to its deployed geoteams as well as to other military and civilian clients. The three types of support provided are

*Operational*—Support to military operations such as those in Afghanistan, Bosnia, Kosovo, East Timor, and Sierra Leone

*National*—Support to national crises such as the Winnipeg flood, Swiss Air disaster, and 1998 ice storm as well as events such as the PanAm Games

*Training*—Time and space mock-up maps for Army, Navy, and Air Force.

All of the production has been broken down into three main focal points based on the detail of the data and time required to produce the product. In this way, most rapid response jobs that come into the unit can be handled. The following are the three operational focuses adopted by MCE.

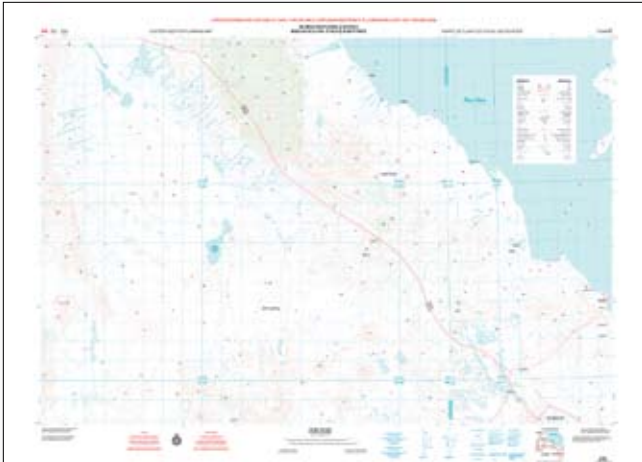
## Initial Operational Dataset—IODS

These are products that are produced to satisfy a 24-hour response time. These are usually briefing maps produced at a scale of 1:1,000,000 using off-the-shelf sources obtained from hard-copy maps and Internet image files. The product that is produced is a raster product with map surround and some vector graphics. These are produced for briefing purposes and as aids to reconnaissance.

## Minimum Essential Dataset—MEDS

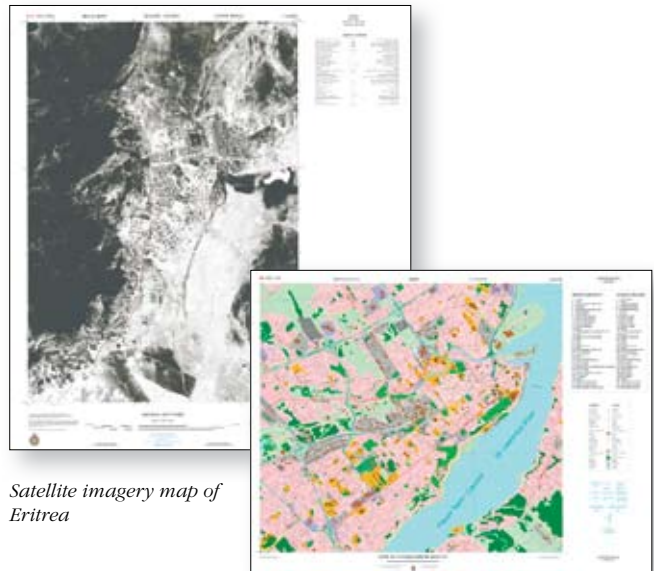
The seven-day response planning maps are produced at a scale of 1:250,000. The data used is from vector sources obtained through Vector Product Format (VPF) and/or by heads-up digitizing of geocoded data. The product is produced showing the “sandbox” or location where the operation is taking place along with map surround and more detailed graphics for an area. These are produced for reconnaissance purposes prior to the deployment of troops.

Below are two maps produced for the CF operation in Ethiopia and Eritrea.



## Mission Specific Dataset—MSDS

The specialty maps are produced in 30 days at a scale of 1:50,000. This type of product outlines information specific to the area of interest with value-added information that could include perspective views, lines of sight, and 3D fly-throughs. They are used by the troops of a main body deployment.



*Satellite imagery map of Eritrea*

*Vector map of Montreal produced for a joint operation with RCMP*

Because of the rapid nature of the work flow and the fast turn-around time, accountability is required at each level to ensure that complete and thorough checks are performed. In DRS, there can be up to six quality control checks performed before a job is released to a client.

Since its conception, the Digital Response Section of the Mapping and Charting Establishment has been able to produce a wide variety of products for both the Canadian Armed Forces and various civilian organizations. It is a fast-paced production area within the unit but very satisfying for soldiers because no two jobs are similar, and they have a chance to show off their GIS skills every day. DRS has been proven to be an important part of the unit's production capabilities through its rapid response time and current, qualified products that meet or exceed the expectations of MCE's clients.