

Crime Analysis Application Installation Guide

The Crime Analysis extension for ArcView GIS is software that lets you query, analyze and display crime data. This installation guide provides the following information:

- What you need to get started
 - Software
 - Hardware
- Where to install Crime Analysis Version 1
- How to install Crime Analysis Version 1
- How to uninstall Crime Analysis Version 1

What you need to get started:

If you are new to the Crime Analysis extension, before you install the software you should identify the resources you will need to run the applications.

Software

- The Crime Analysis extension requires ArcView GIS 3.1 to be installed on your PC. The extension uses the ESRI TrueType fonts provided with ArcView GIS 3.1. If any of these fonts are missing, the extension will install them.
- The Crime Analysis extension requires Version 1.1 of the ArcView Spatial Analyst extension to be installed on your PC.

Hardware

The Crime Analysis extension requires a monitor resolution of at least 800 x 600.

Where to install Crime Analysis Version 1:

Crime Analysis Version 1 should be installed in the ArcView Version 3.1 home directory (\$AVHOME) on each user's PC. The data to be accessed by the user may be obtained from either the local machine or across a network. Similarly, the metadata directory may be obtained from either the local PC or across a network. Since data and metadata may be obtained across a network, multiple users can access the information in a single data set.

How to install Crime Analysis Version 1:

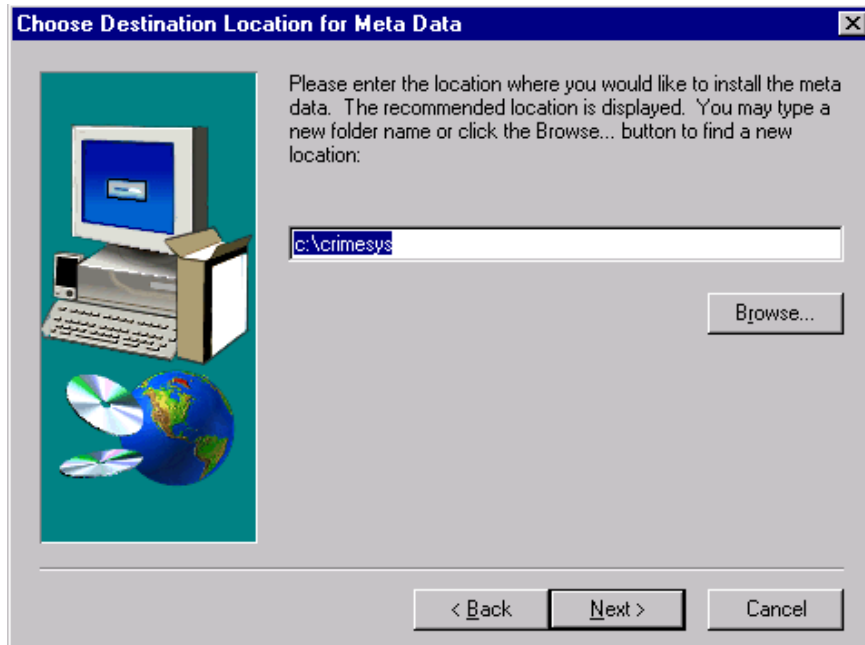
The Crime Analysis extension must be installed on a PC running Windows 95, 98, or NT 4.0. To be able to install the extension, you must have write access to the \$AVHOME directory. The extension requires approximately 8.5 MB of disk space.

1. Create a new 'crime' directory in your c:\temp or c:\windows\temp directory, to hold the install files.
2. Download the Crime Analysis zip executable from the Web site into this crime directory. This is a self-extracting zip file, called crime.exe.
3. Unzip the setup files by running the crime.exe zip executable that you downloaded. When prompted to enter the destination of the files, specify the full path to the crime directory you created, i.e. c:\temp\crime.
4. Run the setup.exe installation program, which can be found in the c:\temp\crime directory, by doing the following.
 - On the Start menu, click **Run**.
 - Type in the full path to the setup.exe as follows.

```
c:\temp\crime\setup.exe
```
 - Click **OK**.
5. Follow the on-screen steps as appropriate. Use the **Next** and **Back** buttons to move between screens.
 - On the Choose Destination Location for Meta Data screen, use the Browse button to locate the directory you want to hold the metadata. This directory will contain the files that define user preferences, as well as the information tables and object files you create to define data sets and legends.

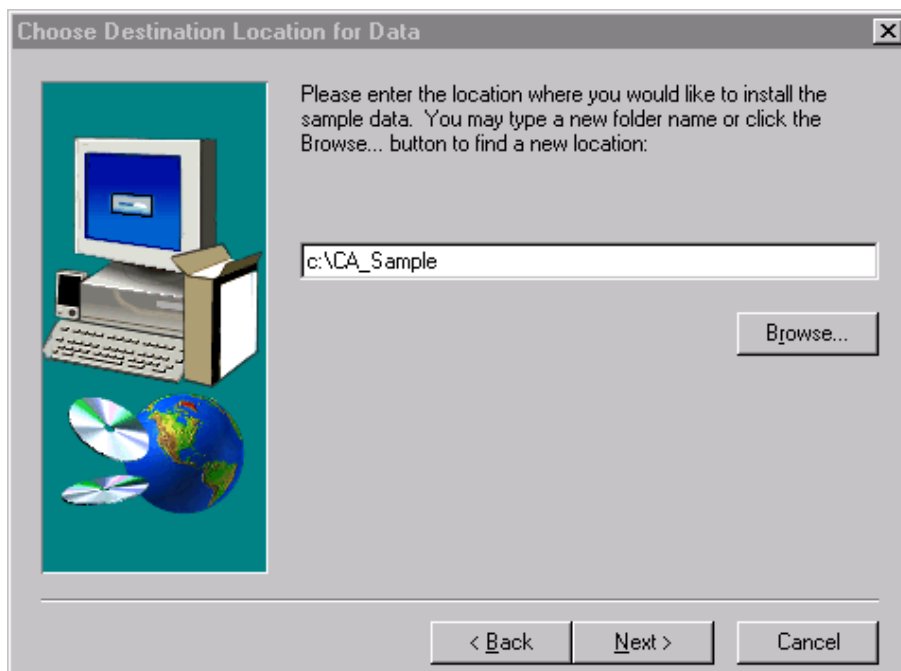
If you want to share the data sets and legends you create with other users, you may locate the metadata directory on a remote PC. You must have write access to this directory to be able to add new data sets and create legends.

If the directory you specify does not already exist, you will be asked if a directory with that name should be created.



- On the Choose Destination Location for Data screen, use the Browse button to locate the directory you want to hold the data. This directory will contain the dbf tables and shapefiles you create for each data set. This is the location that will be searched first for data when you create a data set. However, when you create a data set, you can also browse to other locations locally or on the network.

If the directory specified does not already exist, you will be asked if a directory with that name should be created.



6. Click **Finish** to complete the installation.
7. You **must** now **re-start your computer**.

To uninstall Crime Analysis Version 1:

1. The Crime Analysis extension can be uninstalled by doing the following.
2. From the Start button, click **Settings/Control Panel**.
3. Double-click the **Add/Remove Programs** icon.
4. On the Install/Uninstall tab, select the Crime Analysis program from the list; then click the **Add/Remove** button.