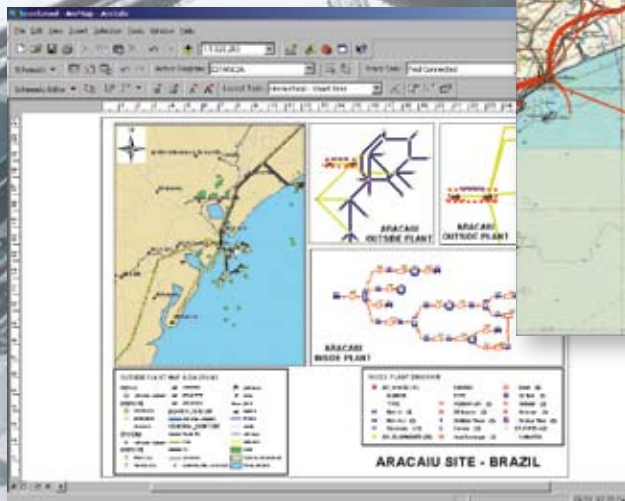
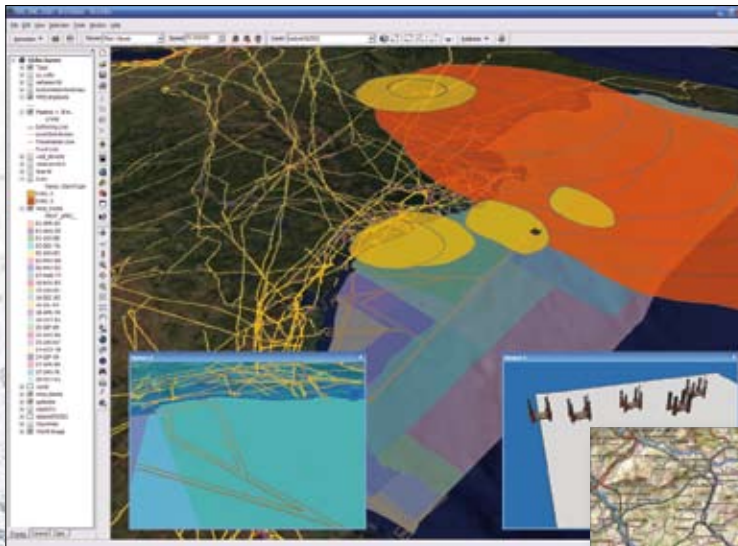


# ESRI® GIS Partner Solutions and Services for **Transmission Pipeline**



# Table of Contents

*Making decisions based on geography is not new in the oil business. Where to route a pipeline or build a refinery are questions that rely heavily on an understanding of geography to make intelligent business decisions. A geographic information system (GIS) is the integrating technology used to organize, analyze, and distribute data for day-to-day operations as well as in research, engineering, and facility management. Although an important tool, GIS is just one of the many tools needed to supply managers with the information required to make decisions that will have a significant impact on operators' ability to provide the services demanded by their customers. The industry has identified these needs, and ESRI is fortunate to be partnering with producers of the best-of-breed solutions for the pipeline industry.*

Advantica, Inc.	3	Helical Systems Inc.	11	Planet GIS LLC	20
American Innovations	3	IDELIX Software Inc.	12	SAIC	20
Applied Field Data Systems, Inc.	4	IHS Energy	12	SENOGRAFIA Sensoriamento Remoto Ltda.	21
Avenza Systems Inc.	4	Impress Software Solutions, Inc.	13	Shanghai Aerospace Energy Co., Ltd.	21
Blue Sky Development, Inc.	5	INFLOR Consultoria e Sistemas Ltda	13	Shanghai Inta Information Technology Co. Ltd.	22
Celeritas Technologies	5	Information Builders	14	Shenyang Jinjian Digital City Software Co., Ltd.	22
Coler & Colantonio, Inc.	6	Intermap Technologies, Inc.	14	Spescom Software Inc.	23
Deighton Associates Ltd.	6	James W. Sewall Company	15	Spotfire, Inc.	23
Digital Mapping Services, L.P.	7	LandWorks, Inc.	15	Surdex Corporation	24
Digital PetroData	7	Latitude Geographics Group Ltd.	16	Tadpole Technology—Geospatial Solutions Division	24
DMTI Spatial Inc.	8	MDA—Geospatial Services International	16	Tele Atlas	25
Dynamic Risk Assessment Systems, Inc.	8	MetaCarta	17	The Pressure Pipe Inspection Company	25
Eagle Information Mapping, Inc.	9	Miner & Miner, a Telvent Company	17	Vector Graphics, Inc.	26
East View Cartographic, Inc.	9	MOORE Resource Systems	18	XEOS Imaging Inc.	26
EnTempus, Inc.	10	New Century Software Inc.	18		
GeoFields, Inc.	10	Optimal Geomatics Inc.	19		
GE's PII Pipeline Solutions	11	Petris Technology, Inc.	19		

*For more information,  
visit [www.esri.com/pipeline](http://www.esri.com/pipeline).*



### **Advantica, Inc.**

5177 Richmond Avenue, Suite 900  
Houston, TX 77056

Principal Contact: Tom Gilmour

Phone: 713-586-7000

Fax: 713-586-7007

E-Mail: tom.gilmour@advantica.biz

Web: www.advantica.biz

#### **Associated Region**

Worldwide

#### **Category/Service**

Integrity Management



**ADVANTICA**

Advantica, Inc., is a premier provider of engineering consultation and software for the pipeline industries, covering gas, oil, petrochemicals, and water. Advantica's history with British Gas in the United Kingdom and Stoner Software in the United States gives the company a long track record of providing data management solutions, pipeline integrity, and risk consultation services. Its Uptime™ software brings pipeline data management, integrity data management, and risk management together into one package within the powerful ESRI® ArcGIS® environment. Advantica's solution is scalable from desktop to enterprise. The company can help users comply with legislation and optimize their pipeline integrity management funds.

### **American Innovations**

Integrity Management Division  
(formerly Bass-Trigon)  
7810 Shaffer Parkway, Suite 150  
Littleton, CO 80127

Principal Contact: Dan Barry

Phone: 303-948-0119

Fax: 303-948-0479

E-Mail: Dan.Barry@amerinnovations.com

Web: www.amerinnovations.com

#### **Associated Region**

Worldwide

#### **Category/Service**

Consulting



American Innovations' Integrity Management Division (IMD) provides effective integrity management products and services to the oil and gas (O & G) industry including GIS-based regulatory management solutions. Within the United States, the company's GIS solutions are designed to fully comply with prescriptive pipeline integrity management regulations and enhance clients' comprehensive integrity management programs. IMD's GIS core competencies include gas pipeline HCA, class location, hazardous liquid pipeline and station facility HCA, and EFRD analyses; population and environmental data gathering; and integrity data visualization.

### Applied Field Data Systems, Inc.

16300 Katy Freeway, Suite 250  
Houston, TX 77094

Principal Contact: Ishu Wadwani

Phone: 281-579-0492

Fax: 281-579-0412

E-Mail: afd saw@aol.com

Web: www.afds.net

#### Associated Region

Asia Pacific

North America

#### Category/Service

Consulting

Data Collection Services

Field Data Capture/GPS

Field Solutions

System Integration/Application Development



Applied Field Data Systems, Inc., provides systems and solutions for collection of pipeline data in the field. Its systems include GPS receivers, laser range finders, pen-based computers, field data collection software, and GIS software. The company also offers consulting, software development for GIS mapping, data conversion, training, and systems integration services.

### Avenza Systems Inc.

124 Merton Street, Suite 400  
Toronto, ON M4S 2Z2  
Canada

Principal Contact: Ted Florence

Phone: 416-487-5116

Fax: 416-487-7213

E-Mail: info@avenza.com

Web: www.avenza.com

#### Associated Region

Worldwide

#### Category/Service

Design Solutions



Avenza Systems Inc. is the producer of MAPublisher® and Geographic Imager®, two powerful geospatial suites for Adobe® Illustrator® and Adobe Photoshop®. MAPublisher imports a wide variety of vector GIS data into Adobe Illustrator and provides more than 40 additional tools for working with the data to produce the best maps possible. Geographic Imager allows Adobe Photoshop to be used to edit, mosaic, and reference geospatial imagery. Both products work seamlessly within the Adobe vector and raster graphics environments to extend these design environments to the geospatial world.

## Blue Sky Development, Inc.

14100 Southwest Freeway, Suite 230  
Sugar Land, TX 77479

Principal Contact: Bryan Stoltenberg

Phone: 281-980-9494

Fax: 281-980-1757

E-Mail: [Bryans@blueskydev.com](mailto:Bryans@blueskydev.com)

Web: [www.blueskydev.com](http://www.blueskydev.com)

### Associated Region

Worldwide

### Category/Service

Software Solutions

Blue Sky Development, Inc., is a premier software developer of CAD/GIS data migration and integration applications for AutoCAD, MicroStation, and ArcGIS devoted exclusively to automating the generation of CAD and GIS deliverables for the pipeline, civil, and telecommunications industries while creating a portable cross-platform database. Blue Sky Development has been able to provide seamless cross-platform solutions for moving data from survey to engineering to operations. Because of the prevalence of Blue Sky technology among engineering and surveying companies, the operators have been able to look at a standard method of receiving engineering data in a consistent format from project to project, thereby eliminating the need for extensive time-consuming conversions. By providing engineering companies with an automated solution available on AutoCAD, MicroStation, or ArcGIS, Blue Sky technology has reduced the cost of the engineering document deliverable while also eliminating the costly and time-consuming process of reacquiring or repurchasing the data necessary for compliance with current government regulations. With the release of the standard data models of PODS and ISAT, the industry has the foundation for storing and managing system data, and now with Blue Sky products, the industry has a standard method for both transferring data to and from engineering as well as for internal sheet generation. Because the Blue Sky tools create all the necessary coordinate systems on the fly for transferring data, the tools allow for data integration and coexistence with almost every GIS vendor application and GIS system on the market. Founded in 1998, Blue Sky Development provides automated mapping software for CAD and GIS users around the world.

## Celeritas Technologies

7101 College Boulevard, 6th Floor  
Overland Park, KS 66210

Principal Contact: Hal Bentley

Phone: 913-491-9000

Fax: 913-663-1000

E-Mail: [bentley@celeritas.com](mailto:bentley@celeritas.com)

Web: [www.pipelinecompliance.com](http://www.pipelinecompliance.com)

### Associated Region

North America

### Category/Service

Consulting

Design Solutions

Field Solutions

Integrity Management

System Integration/Application Development

Celeritas Technologies is an enterprise consulting and GIS development company that is heavily focused in the utility, energy, and pipeline industries. Its solutions assist companies with integrity management, public awareness, ticket management, and so forth. These solutions allow companies to document, track, and geospatially reference audience and asset data, dig ticket data, high consequence area data, aerial photography data, and so forth. They also have the ability to link documents and make comments that can be attached to the data. This allows companies to view their data from one central location via the Internet while easing the burden of regulatory compliance.



## Coler & Colantonio, Inc.

101 Accord Park Drive  
Norwell, MA 02061-1685

Principal Contact: Jeff Allen

Phone: 781-982-5411

Fax: 781-982-5490

E-Mail: [jallen@col-col.com](mailto:jallen@col-col.com)

Web: [www.col-col.com](http://www.col-col.com)

### Associated Region

Europe/Middle East/Africa

Latin America

North America

### Category/Service

Consulting

Data Collection Services

Design Solutions

Network Analysis/Solutions

System Integration/Application Development

Workflow Management



Coler & Colantonio, Inc., is focused on supporting its clients through all phases of a pipeline's life cycle. Its fully integrated suite of software applications brings together right-of-way information, preliminary surveys, as-built data capture, facility data management, alignment sheet generation, operation and maintenance reporting, ILLI data loading, integrity management and analysis, public awareness notification, FERC, DOT and railroad commission filings, and compliance reporting. In addition, Coler & Colantonio's staff of pipeline engineers, surveyors, and environmental scientists supports clients in route planning, design, construction management, pipeline operation, field data collection, and analysis.

## Deighton Associates Ltd.

112 King Street East  
Bowmanville, ON L1C 1N5  
Canada

Principal Contact: Richard Baumgartner

Phone: 905-697-2644

Fax: 905-697-2645

E-Mail: [richard.baumgartner@deighton.com](mailto:richard.baumgartner@deighton.com)

Web: [www.deighton.com](http://www.deighton.com)

### Associated Region

Worldwide

### Category/Service

Asset Management

Consulting

Field Data Capture/GPS

Field Solutions

Integrity Management

System Integration/Application Development



Deighton Associates Ltd. is the developer of dTIMS CT® asset management software for use in managing and analyzing linear assets. Asset managers can benefit from the reliable power of dTIMS CT to predict the future condition of networks and optimize budgets. Using solid engineering-based principles, Deighton's software helps manage assets such as highways and bridges, railways, and utilities for more than 250 clients around the world. Deighton offers a full range of support and implementation services including legacy data migration, analysis parameter development, analysis output interpretation, and training.

## Digital Mapping Services, L.P.

710 Buffalo Street, Suite 700  
Corpus Christi, TX 78401

Principal Contact: Robert Young

Phone: 361-888-5676

Fax: 361-888-5499

E-Mail: Robert@dmslp.com

Web: www.dmslp.com

### Associated Region

North America

### Category/Service

Consulting

Data Collection Services

Document Management

Field Data Capture/GPS



Digital Mapping Services, L.P., provides complete GIS, GPS, and mapping services. The company's diverse experience and teamwork, combined with the most current technology, provide specialized enterprise-wide solutions for its clients. Some of its clients include the city of Corpus Christi Water and Wastewater departments; the city of Lockhart Water and Wastewater departments; the Lower Colorado River Authority; Carrizo Oil & Gas, Inc.; Pioneer Natural Resources USA, Inc.; Encana Oil & Gas; and Koch Pipeline. Some of the services provided include GIS layer creation and/or update; T-4 permit preparation and mapping for the RRC, NPMS, and LEPC; survey grade and mapping-grade GPS data collection; lidar; and 3D/HDS laser scanning.

## Digital PetroData

Denver, CO

Principal Contact: Kirk Harstead

Phone: 303-838-7177

Fax: 303-838-3030

E-Mail: sales@digitalpetrodata.com

Web: www.digitalpetrodata.com

### Associated Region

North America

### Category/Service

Data Collection Services

**digital::petrodata**

Digital PetroData is dedicated to providing the highest quality, most up-to-date strategic data to the exploration and production (E&P) industry. The company concentrates on the western United States, the midcontinent, the Gulf of Mexico basin, Alaska, and Canada.

Its oil and gas data offering includes well permit, header, production, test, and lease data. Its oil and gas data is updated monthly and is available for purchase on a onetime or annual subscription basis. The company focuses on building and offering its datasets in common GIS formats, which facilitate integrative analysis of complex E&P data. In addition, the company provides industry analysis, GIS integration support, and training.

### DMTI Spatial Inc.

625 Cochrane Drive, 3rd Floor  
Markham, ON L3R 9R9  
Canada

Principal Contact: Billy Ormerod

Phone: 905-948-2022

Fax: 905-948-9404

E-Mail: [bormerod@dmτισpatial.com](mailto:bormerod@dmτισpatial.com)

Web: [www.dmtispatial.com](http://www.dmtispatial.com)

#### Associated Region

North America

#### Category/Service

Data Collection Services

Routing Management



DMTI Spatial Inc. is North America's leading provider of the most comprehensive and accurate Canadian risk assessment and facilities management data. DMTI Spatial offers a nested suite of products that contain the following:

- Residential and business address points
- Road network and routing data
- Topographic data (water bodies and routes, terrain features, elevation)
- Nationwide digital elevation models
- Points of interest and building (polygon) data
- Demographic and political boundary data
- High-resolution satellite imagery

DMTI Spatial's consulting and services can help users effectively use address-level and geographic data to complement and supplement in-house capabilities and provide cost-effective business geographic solutions.

### Dynamic Risk Assessment Systems, Inc.

1324-17 Avenue SW, Suite 208  
Calgary, AB T2T 5S8  
Canada

Principal Contact: Trevor MacFarlane

Phone: 403-547-8638, ext. 27

Fax: 403-547-8628

E-Mail: [trevor\\_macfarlane@dynamicrisk.net](mailto:trevor_macfarlane@dynamicrisk.net)

Web: <http://www.dynamicrisk.net/>

#### Associated Region

Worldwide

#### Category/Service

Integrity Management



Dynamic Risk Assessment Systems, Inc., is a full-service pipeline integrity, GIS/data management, and risk assessment provider. The company's flagship integrity management suite—IRAS—is designed to assist operators in evaluating and characterizing the threats and consequences to their pipeline system. The tools work with existing GIS implementations to maximize the value of prior data collection and integration efforts. Intuitive functionality allows users to produce a full range of reports—from engineering to management dashboard views with a logical and intuitive display. Dynamic Risk is committed to remaining a leader in the field of pipeline integrity management.

### **Eagle Information Mapping, Inc.**

14825 St. Mary's Lane, Suite 200  
Houston, TX 77079

Principal Contact: J. Tracy Thorleifson

Phone: 281-920-1500, ext. 224

Fax: 281-920-1600

E-Mail: [jtt@eaglemap.com](mailto:jtt@eaglemap.com)

Web: [www.eaglemap.com](http://www.eaglemap.com)

#### **Associated Region**

Worldwide

#### **Category/Service**

Consulting

Data Collection Services

Design Solutions

Document Management

Integrity Management

System Integration/Application Development

Workflow Management



Eagle Information Mapping, Inc. (EIM), was founded in 1991 by geoscientists to develop software solutions that would enable businesses in the energy industry to visually manage, retrieve, share, and utilize their information assets. EIM's mission is to provide clients worldwide with high-quality integrated solutions supporting strategic business objectives based on GIS and related technologies. The EIM team has a broad range of technical expertise including project management, large-scale software development, systematic analysis and design, and leading-edge technology integration on multiple platforms. EIM develops software solutions and connectivity tools that work with existing databases and data management systems to create "single point accessibility" of important data.

### **East View Cartographic, Inc.**

3020 Harbor Lane North  
Houston, TX 77056

Principal Contact: Julie Horns

Phone: 763-550-0965

Fax: 763-559-2931

E-Mail: [maps@cartographic.com](mailto:maps@cartographic.com)

Web: [www.cartographic.com](http://www.cartographic.com)

#### **Associated Region**

Worldwide

#### **Category/Service**

Data Collection Services



East View Cartographic, Inc. (EVC), is a leading provider of global geospatial data including DEMs, geological maps, topographic maps, vector data, satellite imagery, and nautical charts. With its unparalleled acquisition capabilities, EVC has built an extensive corporate library of more than 200,000 maps, 15 terabytes of digital geospatial data, and 10 million GIS-based records. EVC also offers a wide array of GIS and consulting services such as pipeline alignment analysis, local environmental and demographic boundary analysis, geospatial database design, and translation. Customers include governments, GIS companies, academic researchers, and engineering firms.

## EnTempus, Inc.

3110 Pinewood Lane  
Alexandria, MN 56308

Principal Contact: Robert Day

Phone: 651-689-0057

Fax: 320-763-5560

E-Mail: [bday@entempus.com](mailto:bday@entempus.com)

Web: <http://www.entempus.com>

### Associated Region

North America

### Category/Service

Consulting

Data Collection Services

Document Management

Field Data Capture/GPS

Field Solutions

Hardware/Middleware

System Integration/Application Development

Workflow Management



## GeoFields, Inc.

1180 West Peachtree Street, Suite 1250  
Atlanta, GA 30309

Principal Contact: Brad Schaaf

Phone: 404-875-2550

Fax: 404-875-2442

E-Mail: [bschaaf@geofields.com](mailto:bschaaf@geofields.com)

Web: [www.geofields.com](http://www.geofields.com)

### Associated Region

Worldwide

### Category/Service

Consulting

Data Collection Services

Design Solutions

Document Management

Field Data Capture/GPS

Field Solutions

Integrity Management

Routing Management

System Integration/Application Development

Workflow Management



EnTempus, Inc., specializes in providing environmental management information systems (EMIS) for the petroleum, rail, and other environmentally at-risk transportation industries. These solutions include environmental database management systems for analytical and geotechnical environmental data tied to a project site GIS using ArcView® and ArcView 3D Analyst™, a Web-enabled information management platform called EMIS Explorer, and the company's field data collection system, EnTer, developed to help its clients accurately and efficiently perform field data collection.

GeoFields, Inc., provides data management solutions designed to meet the unique data integration, analysis, and regulatory requirements of the oil and gas pipeline industry. Services include asset data management support, software licensing, risk assessment and integrity management support, data and application hosting, project data management support, and pipeline open database development. GeoFields solutions include services and software based exclusively on ESRI technology. These solutions are part of three application suites—DataFrame, RiskFrame®, and ProjectFrame. All products have been successfully implemented at multiple pipeline organizations, which include large interstate transmission operators, intrastate operators, offshore pipelines, gathering companies, and gas utilities.

## GE's PII Pipeline Solutions

1019 Admiral Boulevard  
Kansas City, MO 64106

Principal Contact: Ed Wiegele

Phone: 816-842-0141

Fax: 816 471-1599

E-Mail: Edward.wiegele@ge.com

Web: www.ge.com

### Associated Region

Worldwide

### Category/Service

Consulting

Data Collection Services

Document Management

Network Analysis/Solutions

System Integration/Application Development

Workflow Management



## Helical Systems Inc.

1791 Barrington Street, Suite 1500  
Halifax, NS B3J 3L1  
Canada

Principal Contact: John Burton

Phone: 902-429-1785

Fax: 902-492-2242

E-Mail: jburton@helical.ns.ca

Web: www.helical.ns.ca

### Associated Region

Worldwide

### Category/Service

Data Collection Services



GE's PII Pipeline Solutions division is a global leader in pipeline integrity management services for the oil and gas industry. The company pioneered pipeline GIS and alignment sheet solutions and led the development of APDM. In addition, the company offers total pipeline integrity solutions, including in-line inspection tools and consulting and special analysis services, to provide customers with higher productivity, greater safety, and longer life for their pipeline operations.

Helical Systems Inc. has developed Helical Hyperspatial (HH) Code and Self Defining Structure (SDS) technology for spatial data management, facilitating rapid extraction and compression of multidimensional spatial data. Helical has leveraged this technology in a suite of software for 4D visualization, cleaning, dynamic multi-resolution tiling/gridding, fusion, and storage of sensor data. An extension is available to allow ArcGIS to read SDS data and take advantage of the power of HH Codes. This provides a path for extremely large datasets that have been cleaned and validated with Helical tools to be intelligently reduced in size and used within ArcGIS.

At the Business Partner Conference in February 2005, Helical Systems was recognized as ESRI's New Business Partner of the Year for Canada.

## **IDELIX Software Inc.**

555 – 1122 Mainland Street  
Vancouver, BC V6B 5L1  
Canada

Principal Contact: Doug Fraser

Phone: 604-656-6305

Fax: 604-656-6310

E-Mail: [dfraser@idelix.com](mailto:dfraser@idelix.com)

Web: [www.idelix.com](http://www.idelix.com)

### **Associated Region**

North America

### **Category/Service**

System Integration/Application Development



As data collection techniques continue to advance and volumes of information grow, critical on-screen data is becoming increasingly cluttered. Whether for in-the-field interpretation of seismic test results or for control room management of pipeline systems, Pliable Display Technology (PDT) improves data visualization and interaction in existing software applications, leading to faster comprehension and more accurate decisions. With PDT's immersive user interface, workers can cut through data clutter and access the information they need faster.

If important data can be rendered on a digital display, it can be rendered better with PDT.

## **IHS Energy**

15 Inverness Way East  
Englewood, CO 80112

Principal Contact: Jim Blaha

Phone: 303-736-3000

Fax: 303-736-3150

E-Mail: [jim.blaha@ihsenergy.com](mailto:jim.blaha@ihsenergy.com)

Web: [www.ihsenergy.com](http://www.ihsenergy.com)

### **Associated Region**

Worldwide

### **Category/Service**

Consulting

Data Collection Services

Design Solutions

Internet Solutions

System Integration/Application Development

Workflow Management



IHS Energy enables O&G companies to create and maintain best-in-class decision-making processes by providing essential exploration and production information, intuitive software, consulting services, and insightful analysis. Its E&P databases include upstream data, such as reserves and operator activity, as well as midstream data such as current and proposed pipelines, tariffs, capacities, and end user demand profiles. IHS Energy products and people help clients reduce uncertainty and make informed decisions every day as they evaluate, explore, and manage assets in every major producing area around the world as well as those with untapped potential.

### Impress Software Solutions, Inc.

460 Totten Pond Road, Suite 200  
Waltham, MA 02451

Principal Contact: Stephen Fahey

Phone: 781-419-5621

Fax: 781-419-5666

E-Mail: Stephen.Fahey@impress.com

Web: www.impress.com

#### Associated Region

Worldwide

#### Category/Service

Hardware/Middleware



### INFLOR Consultoria e Sistemas Ltda

Rua Eurico Aguiar, 888 Sala 1004

Vit ria Espírito Santo

29055-280

Brazil

Principal Contact: Rodrigo Tomasi de Castro

Phone: 55-27-2122-0868

Fax: 55-27-2122-0861

E-Mail: rtcastro@inflor.com.br

Web: www.inflor.com.br

#### Associated Region

Latin America

#### Category/Service

System Integration/Application Development



Impress Software Solutions, Inc., is a leading provider of packaged integration applications (I.Apps™) that enable quick and cost-effective integration of project management and geographic information systems, resulting in streamlined business processes across multiple enterprise systems. Impress I.Apps allows integration to be completed at a fraction of the time and cost compared to traditional EAI development platforms. Impress Software customers include global leaders such as Bayer, DuPont, Halliburton, Nebraska Public Power District, New Brunswick Power, British Petroleum, Ontario Power Generation, Valero, and Total.

INFLOR Consultoria e Sistemas Ltda is a consultant and systems integrator focused on developing and deploying integrated IT solutions for forestry management and agricultural business, environmental management, enterprise management, and logistics. INFLOR uses technologies such as SAP/R3, GIS, and Web services, working with worldwide partners such as Microsoft, Oracle, and ESRI. INFLOR is CMMI Level 3 and ISO 9001:2000 certified.

## Information Builders

2 Penn Plaza  
New York, NY 10121

Principal Contact: Don Grady

Phone: 917-339-6892

E-Mail: Don\_Grady@ibi.com

Web: [www.informationbuilders.com](http://www.informationbuilders.com)

### Associated Region

Worldwide

### Category/Service

Data Collection Services



## Intermap Technologies, Inc.

400 Inverness Parkway, Suite 330  
Englewood, CO 80112-5847

Web: [www.intermap.com](http://www.intermap.com)

### Associated Region

Worldwide

### Category/Service

Data Collection Services



Information Builders cost-effectively delivers enterprise business intelligence at the operational, tactical, and executive level, providing the integration, scalability, and self-service usability needed for informed decision making and reporting standardization throughout the extended enterprise. Its iWay Software subsidiary's more than 280 adapters and universal adaptive framework incrementally facilitate service-oriented architectures.

Intermap Technologies, Inc., a radar mapping company, is the world's leading provider of high-accuracy elevation data (up to 0.5 m vertical), high-resolution imagery data (1.25 m), and related geospatial products. Much of this data is available as commercial off-the-shelf as well as custom data acquisition programs worldwide. The data is suitable for geological interpretation and/or exploration mapping, pipeline route plan and design, and HCA spill modeling.

Data is available for a fraction of the cost of lidar data and has a much-improved accuracy, outstanding currency and consistency, and a much higher resolution than any existing national elevation product.

## James W. Sewall Company

P.O. Box 433  
136 Center Street  
Old Town, ME 04468

Principal Contact: Timothy White

Phone: 207-827-4456  
Fax: 207-827-3641  
E-Mail: tim.white@jws.com  
Web: www.jws.com

### Associated Region

Worldwide

### Category/Service

Consulting  
Data Collection Services  
Design Solutions  
Document Management  
Network Analysis/Solutions  
System Integration/Application Development  
Workflow Management  
Other: Analysis and Reporting Software



## LandWorks, Inc.

2600 South Gessner, Suite 420  
Houston, TX 77063

Principal Contact: Scott Kramer

Phone: 303-830-0390, ext. 170  
Fax: 303-830-0425  
E-Mail: skramer@landworks.com  
Web: www.landworks.com

### Associated Region

Worldwide

### Category/Service

Consulting  
Data Collection Services  
Design Solutions  
Document Management  
Field Data Capture/GPS  
Field Solutions  
System Integration/Application Development



Faced with increasing regulatory pressures, pipeline operators are using integrity management software and services from James W. Sewall Company to meet the challenges. With more than 30 years' experience serving the pipeline industry, Sewall offers industry-standard products for compliance, management, analysis, and reporting including ASGPipeline™, the premier alignment sheet generation reporting tool; RiskCalculator™, a fully configurable and extensible user-maintained relative risk calculation tool; and ClassLocator™ and HCACalculator™ for user-configured class location determination and HCA calculation.

Sewall also provides a broad range of consulting, data conversion, migration, maintenance, system design, and implementation services as well as photogrammetric and orthophotography data development and maintenance.

LandWorks, Inc.'s LPM-GIS allows the pipeline land professional to use a simple, intuitive ArcGIS interface to display and analyze digital spatial data for each right-of-way agreement along with associated tabular data such as owner information, provisions and obligations, and key dates associated with the agreement. The LandWorks Toolbox provides easy-to-use mapping and analysis tools that simplify the analysis of the right-of-way data and the generation of presentation-quality maps.

LPM-GIS provides document management functionality, allowing scanned right-of-way agreements to be accessed and viewed directly from the ArcGIS interface.

LPM is available for ArcGIS 8.x/9.x and either shapefiles or ArcSDE®.

## Latitude Geographics Group Ltd.

204 Market Square  
Victoria, BC V8W 3C6  
Canada

Principal Contact: Robert Lenarcic  
(secondary: Steven Myhill-Jones)

Phone: 250-381-8130  
Fax: 250-381-8132  
E-Mail: [info@latitudegeo.com](mailto:info@latitudegeo.com)  
Web: [www.latitudegeo.com](http://www.latitudegeo.com)

### Associated Region

North America

### Category/Service

Consulting  
System Integration/Application Development



Geocortex Internet Mapping is the Internet-based geography division of Latitude Geographics Group Ltd. The company helps clients succeed with Internet-based geography. It provides a suite of proven ArcIMS® software-related products and hosting and development services—with success stories across North America. Geocortex Internet Mapping has offices in Victoria, Ontario, and Seattle, Washington.

## MDA—Geospatial Services International

13800 Commerce Parkway  
Richmond, BC V6V 2J3  
Canada

Principal Contact: Tor Henderson

Phone: 604-231-4857  
Fax: 604-244-0404  
E-Mail: [thenderson@mdacorporation.com](mailto:thenderson@mdacorporation.com)  
Web: [www.mdacorporation.com](http://www.mdacorporation.com)

### Associated Region

Worldwide

### Category/Service

Data Collection Services  
Field Solutions  
Integrity Management



RADARSAT International has been rebranded. MDA—Geospatial Services International provides data, information products, and services from the majority of optical and radar-imaging satellites. It also offers training, GIS services, and project management.

The company's technical expertise supports various applications such as resource management and monitoring, terrain mapping and 3D modeling, and oil seep detection.

Using a technique called interferometry, or InSAR, it can map small-scale movements at the earth's surface—in the order of millimeters—from space. This information can be integrated with existing ground-based surveillance information to provide a more comprehensive assessment of pipeline risks. In addition, potential geohazards can be assessed over a wide swath along the pipeline corridor.

## MetaCarta

875 Massachusetts Avenue  
Cambridge, MA 02139

Phone: 617-661-6382  
Fax: 617-661-6384  
E-Mail: [energy@metacarta.com](mailto:energy@metacarta.com)  
Web: [www.metacarta.com](http://www.metacarta.com)

### Associated Region

Worldwide

### Category/Service

Document Management



MetaCarta geOdrive™ helps upstream and downstream knowledge workers instantly locate text documents, then places them on maps. It provides an enterprise solution with the ability to find what workers want to know and where, regardless of where the information is actually stored.

Knowing as much as possible about geographic locations is essential to energy companies' economic viability. Much of the information that is required to help make these decisions resides in documents scattered throughout an organization. MetaCarta's Energy team, based in Houston, Texas, supports a wide range of customers in the energy sector including E&P, mining, and mineral/environmental management.

## Miner & Miner, a Telvent Company

4701 Royal Vista Circle  
Ft. Collins, CO 80521

Principal Contact: Erika Murphy

Phone: 970-223-1888  
Fax: 70-223-5577  
E-Mail: [sales@miner.com](mailto:sales@miner.com)  
Web: [www.miner.com](http://www.miner.com)

### Associated Region

Worldwide

### Category/Service

Design Solutions  
System Integration/Application Development  
Workflow Management



Miner & Miner offers ArcFM™ Solution to support pipeline editing and maintenance requirements. ArcFM is based on the latest ESRI technology and has been implemented in more than 230 utilities worldwide. It is a proven, mature solution for editing networks and asset data. In addition, the Miner & Miner implementation services team is expert in delivering solutions based on ArcGIS technology. Miner & Miner has also partnered with many companies to provide solutions to utilities and has gained expertise in all aspects of utility automation through those working relationships.

## MOORE Resource Systems

P.O. Box 339  
44 Crawford Crescent  
Campbellville, ON L0P 1B0  
Canada

Principal Contact: David Stortini

Phone: 905-854-1607, ext. 223

Fax: 905-854-1608

E-Mail: [dstortini@moorers.com](mailto:dstortini@moorers.com)

Web: [www.moorers.com](http://www.moorers.com)

### Associated Region

North America

### Category/Service

Data Collection Services



MOORE Resource Systems is a full-service provider of data conversion and integration services as well as editing/maintenance software tools to manage pipeline asset data. The company's PipeWORKS product suite is designed to address the spatial information management needs of the oil and gas pipeline industry. The PipeWORKS tools leverage existing investments in IT resources by integrating elements of existing GIS, CAD, and database technologies. No major new investment in software, hardware, or staff training is needed. PipeWORKS is the result of an in-depth analysis of oil and gas pipeline industry needs to generate and manage information in a timely manner and cost-effective way.

## New Century Software Inc.

2627 Redwing Road, Suite 100  
Fort Collins, CO 80526

Principal Contact: Robert Brook

Phone: 970-267-2000

Fax: 970-206-0157

E-Mail: [info@newcenturysoftware.com](mailto:info@newcenturysoftware.com)

Web: [www.newcenturysoftware.com](http://www.newcenturysoftware.com)

### Associated Region

Worldwide

### Category/Service

Consulting

Data Collection Services

Field Data Capture/GPS

Field Solutions

Integrity Management

Routing Management

System Integration/Application Development

(majority)



New Century Software Inc. is the leading provider and implementer of PODS solutions. In addition, the company provides non-PODS applications and custom solution development. The company complements its applications with a variety of technical services ranging from project management, consulting, or data conversion/migration to mapping services. Its solutions are focused on pipeline and facility management, gas/liquid HCA and spill migration analysis, ILLI and pipeline data loading, alignment sheet generation, and template creation. The company has the experience and the solutions to meet users' pipeline GIS data management needs.

### Optimal Geomatics Inc.

625 West Kent Avenue, Suite 100  
Vancouver, BC V6P 6T7  
Canada

Principal Contact: Nathalie Dysthe

Phone: 604-654-1855

Fax: 604-654-1880

E-Mail: [ndysthe@optimalgeo.com](mailto:ndysthe@optimalgeo.com)

Web: [www.optimalgeo.com](http://www.optimalgeo.com)

#### Associated Region

Europe/Middle East/Africa  
North America

#### Category/Service

Data Collection Services  
Design Solutions  
Field Data Capture/GPS  
Field Solutions  
Integrity Management



Optimal Geomatics Inc. specializes in providing highly accurate geomatic services and software to a customer base that is primarily composed of gas pipeline and electric power line utilities. Optimal employs a number of acquisition systems, including its proprietary technology for aerial data acquisition, and applies innovative technology, techniques, and expertise for in-house processing. The company's unique mapping products and services help utilities reduce cost, improve efficiency, and better manage their assets by turning raw data into highly valuable geospatial information and engineering reports. Optimal's customers include many of the major utilities across North America and the United Kingdom.

### Petris Technology, Inc.

1900 St. James Place, Suite 700  
Houston, TX 77056

Principal Contact: Amy Price

Phone: 713-956-2165

Fax: 713-956-2185

E-Mail: [price@petris.com](mailto:price@petris.com)

Web: [www.petris.com](http://www.petris.com)

#### Associated Region

Worldwide

#### Category/Service

Consulting  
Design Solutions  
Document Management  
Field Data Capture/GPS  
Integrity Management  
Routing Management  
System Integration/Application Development



Founded in 1994, Petris Technology, Inc., provides practical solutions for pipeline companies, leveraging its expertise in GIS, data management, application hosting, and professional services. Through a unique vendor-neutral approach and expertise in service-oriented architecture, Petris designs and deploys innovative technology that integrates data to enable better decision making and provide application transparency. For pipeline companies, Petris provides services that include centerline identification and mapping into shapefiles from existing documents, Seg Gen and Point Gen analyses, a complete one-call ticket management system for potential excavations, class location analyses, and HCA identification based on a "sliding average" rule.

## Planet GIS LLC

7108 South Alton Way, Suite D2  
Centennial, CO 80112

Principal Contact: Tom Miller

Phone: 720-488-4378

Fax: 720-488-4930

E-Mail: [tom@planet-gis.com](mailto:tom@planet-gis.com)

Web: [www.planet-gis.com](http://www.planet-gis.com)

### Associated Region

North America

### Category/Service

Consulting

Data Collection Services

Document Management

Field Data Capture/GPS



## SAIC

8301 Greensboro Drive

MS E-8-7

McLean, VA 22102

Principal Contact: Jeff Wilson or Jeff Breen

Phone: 866-417-5322 or 1-800-430-7629

Fax: 703-676-6700

E-Mail: [georover@saic.com](mailto:georover@saic.com)

Web: [www.georover.com](http://www.georover.com)

### Associated Region

Worldwide

### Category/Service

Other: Software Extension for ArcGIS



Planet GIS LLC was founded with a focus on the spatial data aspects of GIS.

Since then, the company has grown in the number of services it provides and the industries it services. Planet GIS utilizes ArcView® and ArcGIS for custom mapping applications, GIS education and training, and QA/QC of field mapping data and spatial datasets.

Planet GIS offers the following services:

- Documentation services
- Field mapping services
- GIS training and consulting services
- Custom mapping services
- Spatial data conversion services

GeoRover® software, developed by SAIC, is a suite of commercial software extensions for ESRI's ArcGIS software. GeoRover software runs at all levels of ArcGIS Desktop software (ArcView, ArcEditor™, and ArcInfo® software) and enables users to quickly and easily create, import, delete, and edit GIS data. In addition to importing text files, spreadsheets, and databases, GeoRover software provides streamlined tools for importing field data collected with an untethered GPS receiver and a variety of collection devices. Field data, track logs, and waypoints can be automatically georeferenced and plotted into the map display and live tracks can be displayed. GeoRover software can be used in the pipeline industry to survey pipelines for periodic maintenance, perform vulnerability assessments of infrastructure, or maintain personal and enterprise geodatabases.

## SENOGRAFIA Sensoriamento Remoto Ltda.

Rua Mateus Leme, 757  
Curitiba, PR 80.530-010  
Brazil

Principal Contact: Paulo Folle

Phone: 41-3-324-4795

Fax: 41-3-324-4795

E-Mail: [senografia@senografia.com.br](mailto:senografia@senografia.com.br)

Web: [www.senografia.com.br](http://www.senografia.com.br)

### Associated Region

Latin America

### Category/Service

Consulting



SENOGRAFIA Sensoriamento Remoto Ltda. is a Brazilian company that offers consulting, agronomy engineering, and surveying services as well as technical cartography engineering, mapping, GIS, and remote-sensing services. The company's main office in Curitiba, Paraná, is composed of highly qualified professionals who are committed to meeting the needs of its clients.

## Shanghai Aerospace Energy Co., Ltd.

Longdong Avenue 4493, PuDong New Area  
Shanghai 201201  
People's Republic of China

Principal Contact: Ma ZhanJun

Phone: 86-21-5858-9020

Fax: 86-21-5858-3778

E-Mail: [mzj@sae.sh.cn](mailto:mzj@sae.sh.cn)

Web: [www.sae.sh.cn](http://www.sae.sh.cn)

### Associated Region

Asia Pacific

### Category/Service

System Integration/Application Development



Established in 1993, Shanghai Aerospace Energy Co., Ltd. (SAE), is a diverse company specializing in research, development, manufacturing, sales, and services of delivery techniques and equipment for gas energy. As the full-investment organization of China Aerospace Group Company in Shanghai, taking advantage of high technology and the expertise of the Shanghai Aerospace Bureau, SAE is established in the industry of environment protection and energy in which it has great achievements. SAE's equipment and products have been widely used in the gas, petroleum, and transportation industries as well as civil construction in China. SAE has gained the support of customers and has acquired a large market share because of its high-quality products and services.

**Shanghai Inta Information Technology Co. Ltd.**

Building 7, 1F No. 498 Guoshoujing Road  
Pudong Software Park  
Shanghai 201203  
People's Republic of China

Principal Contact: Qian Feng

Phone: 86-13-0021-98193  
Fax: 86-21-50800250  
E-Mail: feng.qian@inta.com.cn  
Web: www.inta.com.cn

**Associated Region**

Worldwide

**Category/Service**

Field Data Capture/GPS  
System Integration/Application Development



Shanghai Inta Information Technology Co. Ltd. is a Sino-German IT company. The German-capital partner is Hansa Luftbild AG, which specializes in aerial surveying, remote sensing, and GIS. Inta mainly deals in GIS technological application and development, Internet online services, software and hardware, consultation, and service of unified network solutions.

**Shenyang Jinjian Digital City Software Co., Ltd.**

33# River Side Garden, No. 215 Youth Street  
Shenhe District  
Shenyang City 110015  
People's Republic of China

Principal Contact: Wang Shuliang

Phone: 86-24-2396-8918/86-24-2396-8908-19  
Fax: 86-24-2396-8158  
E-Mail: wtok668@163.com.cn  
Web: www.jjgis.com.cn

**Associated Region**

Asia Pacific

**Category/Service**

System Integration/Application Development



Shenyang Jinjian Digital City Software Co., Ltd., is a domestic professional provider of complete solutions for digital city applications. The company helps customers choose and build GIS platforms, databases, and more specialized development and assists in implementation. To be a part of the solutions, the company also provides professional services including implementation, integration, configuration, and training.

## Spescom Software Inc.

10052 Mesa Ridge Court  
San Diego, CA 92121

Principal Contact: Jonathan Reed

Phone: 281-313-1425  
Fax: 858-625-3010  
E-Mail: [info@spescom.com](mailto:info@spescom.com)  
Web: [www.spescomsoftware.com](http://www.spescomsoftware.com)

### Associated Region

Worldwide

### Category/Service

Consulting  
Data Collection Services  
Design Solutions  
Document Management  
Integrity Management  
System Integration/Application Development  
Workflow Management



Spescom Software Inc. is the developer and marketer of leading-edge content and configuration management software and solutions for transmission pipelines for management of pipeline integrity, configuration management of pipeline assets, and conformance to regulatory statutes (ASME B31.8, OPS, and CFR Parts 192 and 195). Spescom's eB product suite provides the unique ability to manage disparate types of content and other data on a single platform and supports a variety of vertical industries. Key customers include Constellation Energy; Continental Express; AmerenUE; cities of Las Vegas, Nevada, and Dayton, Ohio; Lloyds Register; United Space Alliance; Entergy; Northeast Utilities; London Underground; Network Rail; and many others. The company is headquartered in San Diego, California, with an international sales and support center in London, England.

## Spotfire, Inc.

212 Elm Street  
Somerville, MA 02144

Principal Contact: Lars Bauerle

Phone: 617-702-1520  
Fax: 617-702-1700  
E-Mail: [lars.bauerle@spotfire.com](mailto:lars.bauerle@spotfire.com)  
Web: [www.spotfire.com](http://www.spotfire.com)

### Associated Region

Asia Pacific  
Europe/Middle East/Africa  
North America

### Category/Service

Data Collection Services



Spotfire, Inc., provides interactive, visual data analytical applications and services that empower enterprises and their end users to improve operational performance and gain an information advantage over the competition. DecisionSite® MapConnect is an ArcMap™ extension that gives users the fastest, most effective way to enhance the spatial capabilities of ESRI ArcGIS with dynamic, interactive visual analysis. Analysts can interact with maps and data in the ArcGIS system to quickly assess data integrity and identify important trends and correlations. More than 25,000 users in approximately 1,000 organizations around the world use Spotfire DecisionSite to drive confident decision making by quickly and easily spotting trends, outliers, and unanticipated relationships in critical business data.

## **Surdex Corporation**

520 Spirit of St. Louis Boulevard  
Chesterfield, MO 63005

Principal Contact: Randy Burkham

Phone: 636-532-3427

Fax: 636-537-9638

E-Mail: randyb@surdex.com

Web: www.surdex.com

### **Associated Region**

North America

### **Category/Service**

Consulting

Data Collection Services

Design Solutions

Field Data Capture/GPS

Integrity Management

Routing Management

System Integration/Application Development



Surdex Corporation offers a complete photogrammetric and GIS solution to the pipeline industry with methods of extracting land-based information to meet the needs of the integrity management program. Data generated by Surdex can be used for exploration, slope analysis, contours, planning, and development. Since 1954, Surdex Corporation has provided aerial data collection and geospatial data generation services throughout the continental United States. Utilizing its fleet of aircraft, aerial data acquisition capabilities include black-and-white, color, and infrared photography; digital multispectral imagery; and lidar elevation data. Photogrammetric product generation capabilities include planimetric data, topographic data, and digital orthophotography.

## **Tadpole Technology—Geospatial Solutions Division**

2231 Faraday Avenue, Suite 140  
Carlsbad, CA 92008

Principal Contact: Tim Dec

Phone: 315-753-0050

Fax: 517-207-8600

E-Mail: Tim.Dec@us.tadpole.com

Web: www.tadpoletechnology.com/gsd

### **Associated Region**

North America

Europe/Middle East/Africa

### **Category/Service**

Consulting

Data Collection Services

Design Solutions

Hardware/Middleware

System Integrator/Application Development

Workflow Management



The Geospatial Solutions Division focus is to help large organizations improve operations by streamlining data management, reducing administration costs, and improving access to critical data by moving large amounts of data through the organization. Our expertise is getting data from vendors and disseminating it throughout the organization quickly to enable true automated data sharing. There are needs for ArcSDE experts, and we have consultants on hand to help with ArcSDE and database issues for Oracle or SQL Server. The Field Business Unit is responsible for field applications (GO! Sync™ Redline and GO! Sync Mapbook) and managing disconnected data for laptops and CE devices. Expertise in application development includes ArcGIS Engine and ArcPad®.

## Tele Atlas

11 Lafayette Street  
Lebanon, NH 03766

Principal Contact: Laurie Kirkpatrick

Phone: 800-331-7881, ext. 1148

Fax: 603-643-6808

E-Mail: Laurie.Kirkpatrick@teleatlas.com

Web: www.teleatlas.com

### Associated Region

North America

### Category/Service

Field Data Capture/GPS

Other: Land Base Data Provider



Tele Atlas is a worldwide leading provider of digital maps and location content for a variety of geospatial products, database solutions, navigation, and location-based services. Tele Atlas' database is a highly accurate reproduction of today's street network. With more than 20 years of experience in data management and compilation, Tele Atlas excels at bringing together a myriad of data resources to create spatial products that help businesses manage, understand, analyze, and use geographic relationships. And no geographic data is more accurate, current, complete, or easier to deploy than Tele Atlas.

## The Pressure Pipe Inspection Company

4700 Dixie Road  
Mississauga, ON L4W 2R1  
Canada

Principal Contact: Mike Garaci

Phone: 905-624-1040, ext. 234

Fax: 905-624-4777

E-Mail: info@ppic.com

Web: www.ppic.com

### Associated Region

Europe/Middle East/Africa

Latin America

North America

### Category/Service

Design Solutions



The Pressure Pipe Inspection Company (PPIC) evaluates the condition of water transmission systems utilizing a suite of unique and patented techniques to pinpoint damaged sections of pipe. Water supply system operators use this information to make informed asset management decisions.

PPIC's asset management system (AMS) facilitates this decision-making process. The system provides operators with a visual representation of the existing current environment in and surrounding the pipeline. PPIC's AMS is GIS-enabled and is unique in that it can store, track, and display data at the individual pipe level, enabling pipeline operators to base selective rehabilitation decisions on custom variable sets.

## Vector Graphics, Inc.

9613 Interline Avenue  
Baton Rouge, LA 70809

Principal Contact: Patrick Nicklas

Phone: 225-925-2047  
Fax: 225-925-2087  
E-Mail: [patrick@vgionline.com](mailto:patrick@vgionline.com)  
Web: [www.vgionline.com](http://www.vgionline.com)

### Associated Region

North America

### Category/Service

Data Collection Services



## XEOS Imaging Inc.

5355, des Gradins Boulevard  
Quebec, QU G2J 1C8  
Canada

Principal Contact: Dan Perel

Phone: 866-215-4708  
Fax: 418-622-1137  
E-Mail: [dan.perel@xeosimaging.com](mailto:dan.perel@xeosimaging.com)  
Web: [www.xeosimaging.com](http://www.xeosimaging.com)

### Associated Region

North America

### Category/Service

Data Collection Services

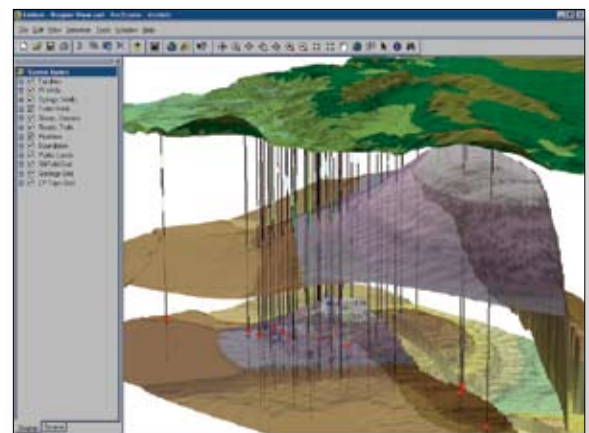
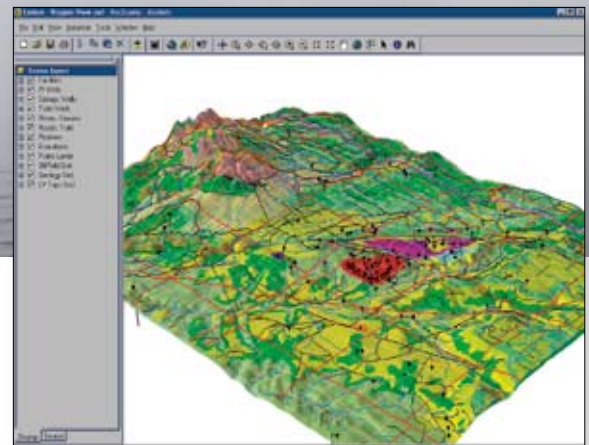
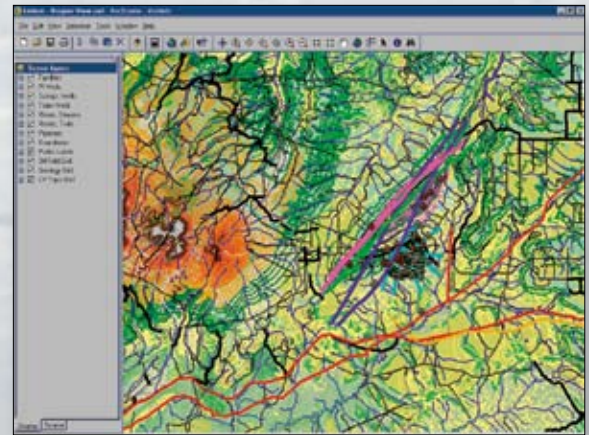


Vector Graphics, Inc. (VGI), provides information-processing solutions for engineering, manufacturing, utility, and construction operations including government agencies that provide public safety, security, utilities, and facilities. Besides offering its customers solutions for product life cycle management, project management, 3D modeling and design software, and mapping and spatial tools from ESRI, VGI also sells software and hardware from Autodesk, SMARTTEAM, GTX, CONTEX, VIDAR, HP, and IBM. VGI prides itself on providing the best service available to its customers by also offering consulting, drafting, plotting, document scanning and conversion, 2D and 3D representations, video animation, and training in CAD/modeling/animation.

XEOS Imaging Inc., a GENIVAR subsidiary with more than 1,200 employees, is a leader in high-resolution digital aerial imagery for linear infrastructures. The company has been involved in aerial imagery since 1988.

XEOS® technology includes image capture, processing, and integration into clients' geographic information systems. The aerial imagery technology allows the capture of digital images with ground resolution from 30 inches (75 cm) to 1 inch (3 cm) using a fixed-wing aircraft. XEOS images can be easily published on the Web, transferred via e-mail, or shared through a computer network. Images can be processed for use as single images or orthorectified mosaics, or they can be displayed in stereoscopic mode.

# How Can Petroleum Companies Make Better Decisions?



Geographic information system (GIS) software by ESRI can help petroleum companies see information in new and innovative ways, resulting in better management decisions. GIS delivers business solutions through the spatial representation of data in land/lease management, exploration, production, transmission, facilities management, corporate financial, and environmental departments. By integrating spatial and tabular data through mapping, your company can better manage its assets and corporate information, which can directly affect its bottom line. ESRI is a full-service company with the experience necessary to help petroleum companies achieve success using GIS technology. Call today to find out why the overwhelming majority of worldwide oil companies, service companies, and consultants have chosen ESRI® GIS products as one of their principal information management tools.



1-888-531-9226

[www.esri.com/petroleum](http://www.esri.com/petroleum)

E-mail: [info@esri.com](mailto:info@esri.com)

**ESRI**—*The GIS Company*™



For more than 35 years, ESRI has been helping people manage and analyze geographic information. ESRI offers a framework for implementing GIS technology in any organization with a seamless link from personal GIS on the desktop to enterprise-wide GIS client/server and data management systems. ESRI GIS solutions are flexible and can be customized to meet the needs of our users. ESRI is a full-service GIS company, ready to help you begin, grow, and build success with GIS.

## Corporate

ESRI  
380 New York Street  
Redlands, California  
92373-8100, USA  
Telephone: 909-793-2853  
Fax: 909-793-5953

For more information  
on ESRI, call

**1-800-447-9778**

(1-800-GIS-XPRT)

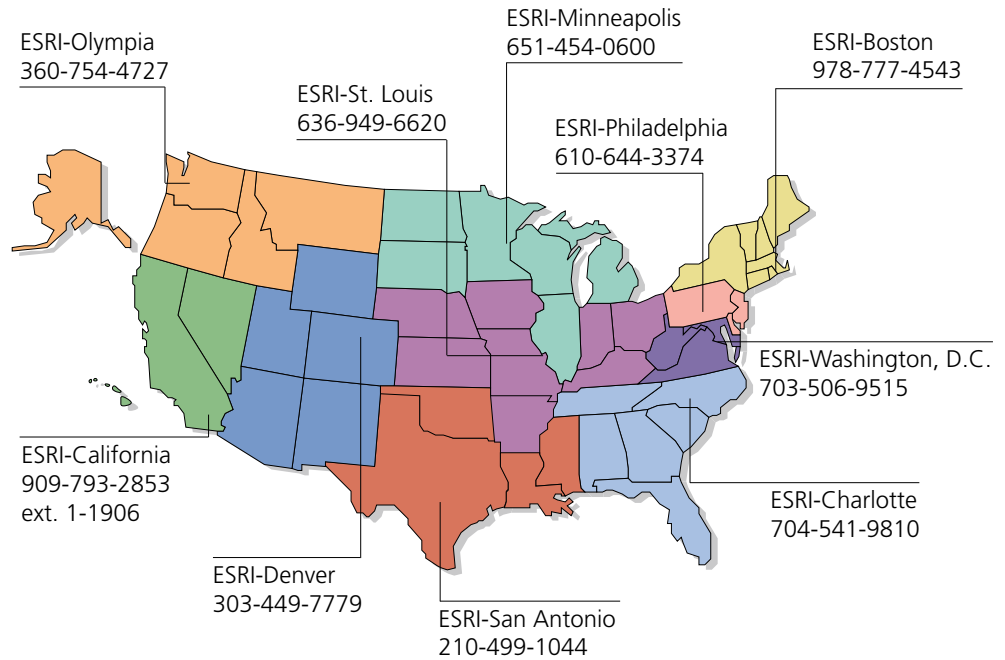
or contact an ESRI value-added  
reseller near you.

Send e-mail inquiries to  
**info@esri.com**

Visit ESRI's Web page at  
**www.esri.com**

Outside the United States,  
contact your local ESRI distributor.  
For the number of your distributor,  
call ESRI at 909-793-2853,  
ext. 1-1235,  
or visit our Web site at  
**www.esri.com/international**

## Regional Offices



## International Offices

Australia  
www.esriaustralia.com.au

Finland  
www.esri-finland.com

Italy  
www.esriitalia.it

Romania  
www.esriro.ro

Belgium/Luxembourg  
www.esribelux.com

France  
www.esrifrance.fr

Japan  
www.esrij.com

Singapore  
www.esrisa.com

Bulgaria  
www.esribulgaria.com

Germany/Switzerland  
www.esri-germany.de  
www.esri-suisse.ch

Korea  
www.esrikr.co.kr

Spain  
www.esri-es.com

Canada  
www.esricanada.com

Hungary  
www.esrihu.hu

Netherlands  
www.esrinl.com

Sweden  
www.esri-sweden.com

China (Beijing)  
www.esrichina-bj.cn

India  
www.esriindia.com

Poland  
www.esripolska.com.pl

Thailand  
www.esri-th.com/indochina

China (Hong Kong)  
www.esrichina-hk.com

Indonesia/Malaysia  
62-21-527-1023  
603-7874-9930

Portugal  
www.esri-portugal.pt

United Kingdom  
www.esriuk.com

Venezuela  
www.esri-ven.com

Place ESRI business partner or distributor address here.

Copyright © 2006 ESRI. All rights reserved. ESRI, the ESRI globe logo, ArcGIS, ArcView, 3D Analyst, ArcSDE, ArcIMS, ArcEditor, ArcInfo, ArcMap, ArcPad, @esri.com, and www.esri.com are trademarks, registered trademarks, or service marks of ESRI in the United States, the European Community, or certain other jurisdictions. Other companies and products mentioned herein are trademarks or registered trademarks of their respective trademark owners.

