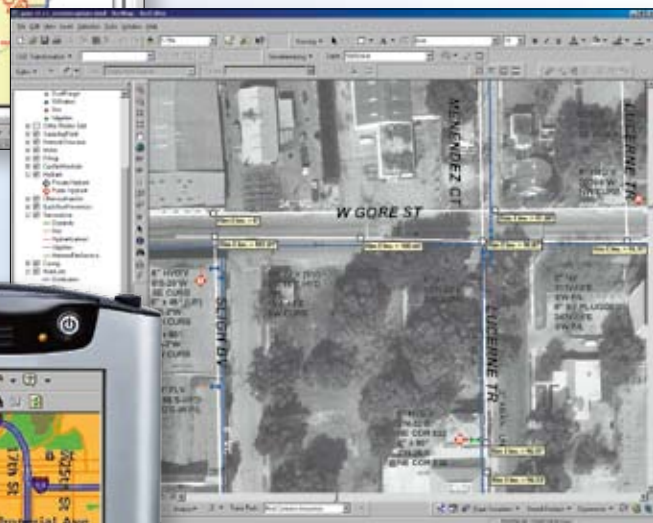
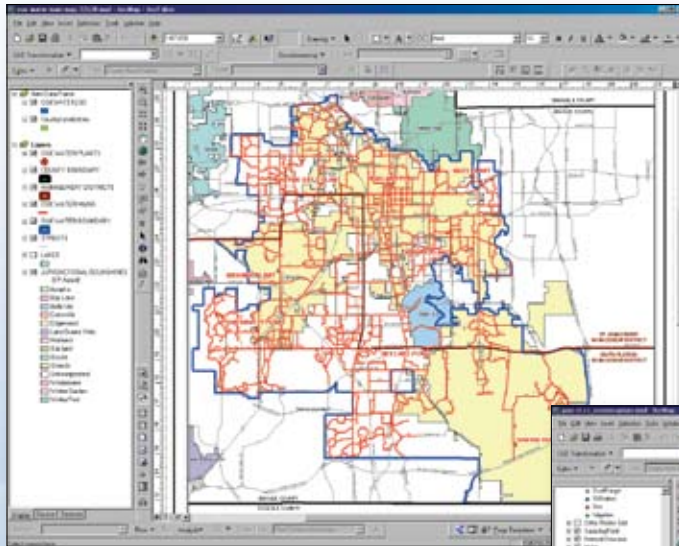


ESRI GIS Partner Solutions and Services for **Water/Wastewater**



ESRI GIS Partner Solutions and Services for Water/Wastewater

The effective use of information in water, wastewater, and storm water utilities is rapidly becoming a major requirement for successful management. The amount of information that must be managed is increasing, and the technology required to manage the information is rapidly changing. The need for enterprise solutions has become apparent, and the vision of a single integrated information management system has been realized. A geographic information system (GIS), although an important tool, is just one of the many tools needed to supply managers with the information required to make decisions that will have a significant impact on the utilities' ability to provide the services demanded by their customers. The industry has identified these needs, and ESRI is fortunate to be partnering with producers of the best-of-breed solutions for water/wastewater/storm water management. For more information, visit www.esri.com/water.

Table of Contents		Table of Contents		Table of Contents	
Name	Page	Name	Page	Name	Page
Advanced Infrastructure Management, Inc.	3	Evans, Mechwart, Hambleton & Tilton, Inc.	14	NewCom Technologies, Inc.	24
Advantica	3	FLO-2D Software, Inc.	14	Nobel Systems	25
AMERICEC	3	FoundOnEarth	15	OneGIS, Inc.	26
Applied Digital Mapping	4	Gateway Mapping, Inc.	15	Origin GeoSystems	26
ARCADIS	4	GBA Master Series, Inc.	15	Orion Technology Inc.	26
Avineon, Inc.	4	Geoambiente Sensoriamento Remoto Ltda.	16	PBS&J	27
Azteca Systems	5	GEOCOM Informatik AG	16	Pixxures, Inc.	27
BAE Systems ADR	5	Geographic Resource Solutions	16	The Pressure Pipe Inspection Company	27
Bjørnsen Consulting Engineers	5	Geographic Technologies Group	17	Provost & Pritchard Engineering Group, Inc.	28
Black & Veatch	6	Geographic Video Systems, LLC	17	Quartic Solutions, LLC	28
Bowne Management Systems, Inc.	6	George Butler Associates, Inc.	17	RBF Consulting	28
B.P. Barber and Associates, Inc.	6	Geo-Spatial Solutions, Inc.	18	Red Oak Consulting	29
Brown and Caldwell	7	Greenman-Pedersen, Inc.	18	Resource Data, Inc.	29
Burns & McDonnell	7	GRW, Inc.	18	RouteSmart Technologies, Inc.	29
Camp Dresser & McKee Inc.	7	GSWW, Inc.	19	Sanborn	30
Carroll Engineering Corporation	8	Hansen Information Technologies	19	The Schneider Corporation	30
CartéGraph Systems, Inc.	8	har*GIS LLC	19	Siemens Program and System Engineering S.R.L.	30
The CEDRA Corporation	8	Hummingbird	20	Spacient Technologies, Inc.	31
Computronix (Canada) Ltd.	9	IDModeling, Inc.	20	Spatial Data Integrations, Inc.	31
Computronix (USA), Inc.	9	Impress Software Solutions, Inc.	20	SPL WorldGroup, Inc.	31
Coulter Mapping Solutions, Inc.	9	Indus	21	Summit Envirosolutions, Inc.	32
CUES, Inc.	10	InfoCode Corporation	21	Tadpole Technology Group	32
DCSE	10	Information Management	21	Tauw Group BV	32
DHI Water & Environment	10	Keck & Wood, Inc.	21	VELOCITIE Integration, Inc.	33
DigitalGlobe	11	KOM-PAKT Ltd.	22	VUEWorks, Inc.	33
Earth Tech, Inc.	11	Lenocker & Associates	22	Wade Trim	33
Ecwise Technologies	11	Locus Technologies	22	Wallingford Software, Inc.	34
EFM Group, Inc.	12	MaintStar	23	Wendel Duchscherer	34
EI Technologies, LLC	12	McKim & Creed, P.A.	23	Westin Engineering, Inc.	35
Electronic Data Solutions	12	Michael Baker Jr., Inc.	23	WilsonMiller	35
EMA, Inc.	13	MWH Soft, Inc.	24	Woolpert LLP	35
Enspira Solutions, Inc.	13	NEOKART GIS Ltd.	24		
Eptisa	14				

Advanced Infrastructure Management, Inc.

601 South Valencia Avenue, Suite 250
Brea, CA 92823

Principal Contact: Yazdan Emrani
Phone: 714-982-5040
Fax: 714-982-5044
E-Mail: yemrani@aim-corp.net
Web: www.aim-corp.net



Advanced Infrastructure Management, Inc. (AIM), is a full-service GIS and information technology firm for the public works sector including water and wastewater municipalities. Its services include GIS implementation studies, data conversion, applications development, and GIS program management. In addition, AIM has been in the forefront of developing GIS-centric applications for National Pollutant Discharge Elimination System (NPDES); GASB 34; and capacity, management, operation, and maintenance (CMOM) and remains committed to helping clients navigate these regulatory waters with ease.

Advantica

P.O. Box 86
Carlisle, PA 17013

Principal Contact: Mark Bolze
Phone: 717-243-1900
Fax: 717-243-5564
E-Mail: info.water@advantica.biz
Web: www.advantica.biz



ADVANTICA

Advantica provides water utilities worldwide with ESRI-based solutions, enabling them to better manage assets and simulate the hydraulic performance of their pipeline networks. Long and widely known for its SynerGEE® network simulator, Advantica recently broadened its water software product range with the introduction of its Mains Replacement Prioritization, which allows users to combine structural condition prediction with their choice of a range of asset maintenance, quality, customer, and service information to allow a holistic replacement program meeting their individual policies and priorities. Advantica's software products are complemented by a broad range of professional services including consulting.

AMERICEC

18980 Ventura Boulevard, Suite 330
Tarzana, CA 91356

Principal Contact: Ani Balikian
Phone: 818-705-7928
Fax: 818-705-7929
E-Mail: ABalikian@americec.com
Web: www.americec.com



AMERICEC is a premier GIS and general engineering firm, with California offices in Redwood City and Tarzana. The company offers comprehensive consulting services in multidisciplinary engineering and information systems including GIS and information technology; planning and architecture; and environmental, structural, electrical, mechanical, transportation, industrial, process, and communication engineering.

AMERICEC provides services to local government departments; public agencies; cities; districts (water/wastewater); electrical and nonelectrical utilities; and private clients such as city of Pasadena, Irvine Ranch Water District, the Maine Department of Environmental Protection, the World Bank, city and county of Honolulu, Los Angeles Community College District, Redlands Institute, ARAMCO, and ADWEA.

Applied Digital Mapping

P.O. Box 907
Port Orchard, WA 98366

Principal Contact: Ed Pierson
Phone: 360-876-4649
Fax: 360-895-5365
E-Mail: epierson@AppliedDigitalMapping.com
Web: www.AppliedDigitalMapping.com



ARCADIS

420 East Park Avenue
Greenville, SC 29601

Phone: 864-242-1717
Fax: 864-235-9062
E-Mail: mdepenning@arcadis-us.com
Web: www.gmgw.com



Applied Digital Mapping (ADM) enables water and wastewater service providers to enhance their information management capabilities to improve business operations, customer service, planning, decision making, and regulatory compliance. ADM specializes in Internet-based technologies.

ADM's GIS Web service is an exciting new solution especially attractive to service providers and government agencies that are searching for a more affordable GIS. Contact ADM for more information.

ARCADIS is a leading global knowledge-driven service provider, active in the fields of infrastructure, buildings, environment, and communications. It is the U.S.-based operations arm of ARCADIS NV, of Arnhem, the Netherlands, an international knowledge-based service organization. With more than 100 years of experience in more than 100 countries worldwide, ARCADIS is aware of the lasting effects of its work. By integrating its understanding of the built environment and the natural world, ARCADIS meets user needs with comprehensive total business solutions. ARCADIS provides solutions that are designed to last. Its philosophy is based on the conviction that every project undertaken must be tackled within the wider context of society and the environment.

ARCADIS excels in understanding both the engineering and GIS needs of its clients. The company's goal is to appropriately integrate both the GIS world and engineering environment to produce a quality product that meets user information and design needs. ARCADIS uses ArcGIS 8.x and ArcSDE® as its standard developing platform and specializes in migrating clients to new technology such as geodatabases. ARCADIS is a supporter and an active participant in water/wastewater geodatabase standards development on a local and national level.

Avineon, Inc.

4825 Mark Center Drive, Suite 700
Alexandria, VA 22311

Principal Contact: Gary Wilkison
Phone: 727-539-1661
Fax: 727-539-6954
E-Mail: gwilkison@avineon.com
Web: www.avineon.com



Avineon, Inc., is a minority-owned business founded in 1992 as an IT service provider specializing in GIS and CAD. Today, the company's core capabilities are in information technology, geospatial solutions, and engineering support services. An SW-CMM Level 3 and ISO 9001:2000 registered firm, Avineon employs approximately 100 staff members at offices in North America and more than 300 staff members at wholly owned facilities in India, many of whom are experienced in providing ESRI database design, application development, data conversion, and data maintenance to water/wastewater clients.

Azteca Systems

11075 South State Street, Suite 24
Sandy, UT 84070

Principal Contact: Brian Haslam
Phone: 801-523-2751
Fax: 801-523-2724
E-Mail: bhaslam@azteca.com
Web: www.azteca.com



Since 1986, Azteca Systems has been helping agencies effectively manage capital assets and infrastructure. An exclusive ESRI business partner and a proven industry leader, Azteca introduced Cityworks®—the only GIS-based solution for asset and maintenance management. Cityworks is a powerful, flexible, and affordable software system used by a wide array of industries to inventory assets, issue and track service requests and work orders, and manage customer needs. Scalable, easy-to-use, and based on open technology, Cityworks has been successfully deployed around the world, increasing productivity, improving customer service, and lowering operational costs.

BAE Systems ADR

124 Gaither Drive, Suite 100
Mt. Laurel, NJ 08054

Principal Contact: James Van Ostenbridge
Phone: 856-866-9700
Fax: 856-866-7800
E-Mail: jvanostenbridge@adrinc.com
Web: www.adr.na.baesystems.com

BAE Systems ADR is a full-service GIS provider offering services, products, and solutions throughout the life cycle of GIS for water and wastewater utilities including capture of business processes, strategic planning, data conversion/migration, application development, Web services, implementation, training, and technical support. The company works exclusively with ESRI® COTS products including ArcGIS® Desktop, ArcSDE, ArcGIS Server, ArcIMS®, and ArcWeb™ Services. It has a thorough understanding of utility infrastructure and how to successfully create user-focused GIS solutions. BAE Systems ADR is also experienced with the integration of utility GIS with customer information systems and asset management systems.

BAE SYSTEMS

Bjørnsen Consulting Engineers

Maria Trost 3
56070 Koblenz
Rhineland-Palatinate
Germany

Phone: 49-261-8851-0
Fax: 49-261-805725
E-Mail: info@bjoernsen.de
Web: www.bjoernsen.de



Bjørnsen Consulting Engineers is a group of leading engineering companies in Germany focusing on interdisciplinary solutions to complex problems of water management, waste management, and ecology. Since 1960, civil engineers, architects, hydrologists, geologists, process engineers, biologists, ecologists, physicists, mathematicians, computer scientists, and economists have worked together to meet the demands of an increasingly environmentally aware and critically oriented society. The company offers its clients economical and environmentally compatible solutions for problems from initial studies to long-term support service.

It has highly qualified employees from the fields of

- Water management
- Computational fluid dynamics
- Water engineering
- Groundwater resources management
- Water supply
- Wastewater removal
- Geographic information systems
- Internet solutions
- Software engineering
- Waste management
- Sanitary landfill construction
- Process engineering
- Structural engineering
- Civil engineering
- Soil protection management
- Geology
- Earthworks and foundation engineering

Black & Veatch

8400 Ward Parkway
Kansas City, MO 64114

Principal Contact: Adrienne Black
Phone: 913-458-3244
Fax: 913-458-3323
E-Mail: blackas@bv.com
Web: www.bv.com



ENERGY WATER INFORMATION GOVERNMENT

Black & Veatch is an international company with offices in more than 30 countries. The company provides the full range of water/wastewater services. Black & Veatch has developed infrastructure planning solutions including Sanitary Sewer Management System, Water Distribution Management System, and the Reduce-Skeletonize-Trim extension for GIS model building. These tools utilize ESRI MapObjects® technology, the power of relational databases, and the capabilities of ArcGIS. Black & Veatch works with organizations to establish their GIS to provide an easier way to organize data associated with modeling, master planning, facilities planning, identifying/prioritizing capital improvement, and rehabilitation/repair projects. Black & Veatch staff includes ESRI Authorized Instructors.

Bowne Management Systems, Inc.

235 East Jericho Turnpike
Mineola, NY 11501

Principal Contact: Jon Siskind
Phone: 516-746-2350
E-Mail: jsiskind@bownegroup.com
Web: www.bownegroup.com



Bowne Management Systems, Inc., is a leading integrator of IT and GIS. Since 1982, Bowne has been providing full life cycle consulting for GIS implementation, wireless and handheld application development, systems integration, document and workflow management, data conversion and integration, and quality control.

Bowne Management Systems is part of the Bowne AE&T Group, which has been providing engineering services for water supply facilities for more than 75 years. Bowne is the district engineer for several water districts on Long Island, New York, providing services for water main installation, pumps, wells, tanks, and control systems. Bowne has been at the forefront of applying innovative technologies including SCADA communications and in-house computer capability for analysis of water networks, wells, and pump stations.

An ESRI business partner since 1999, Bowne Management Systems was named 2005 ESRI Foundation Partner as well as Northeast Regional Business Partner of the Year in 2000.

B.P. Barber and Associates, Inc.

P.O. Box 1116
Columbia, SC 29202-1116

Phone: 803-254-4400
Fax: 803-771-6676
E-Mail: bjeffares@bpbarber.com
Web: www.bpbarber.com/



B.P. Barber & Associates, Inc.
Engineers • Planners • Surveyors

B.P. Barber and Associates, Inc. (BPB), is a multiservice provider of GIS technology, with extensive experience in the water/wastewater/storm water industry. In addition to utilizing GIS in many of the engineering and planning projects for its clients, BPB also provides a wide range of stand-alone GIS services to county and municipal clients, utility agencies, and special service districts.

BPB offers services ranging from needs assessment and planning to comprehensive integration of relational databases, data collection, and custom Internet mapping design.

As an ESRI business partner, BPB utilizes industry-standard GIS software including ArcGIS Desktop, ArcSDE, ArcIMS, and ArcPad®. The company has an ESRI Authorized Instructor on staff to assist in the training needs of its clients.

By integrating GIS with its 89 years of experience in delivering high-quality engineering services, BPB is able to offer considerable savings and impressive efficiency to the water/wastewater/storm water industry, custom tailored to the client's needs.

Brown and Caldwell

201 North Civic Drive
Walnut Creek, CA 94596

Principal Contact: Ryan Pulis
Phone: 440-826-4900
Fax: 440-826-3400
E-Mail: rpulis@brwncald.com
Web: www.brownandcaldwell.com



Established in 1947, Brown and Caldwell is a multidiscipline environmental engineering and consulting firm headquartered in Walnut Creek, California. The company delivers leading-edge engineering and business solutions—from wastewater and water resources to environmental services and solid waste—to efficiently and effectively meet the environmental needs of public agencies, government, and private industry. Brown and Caldwell is employee owned and employs more than 1,200 staff members in 45 offices nationwide. *Engineering News-Record* (ENR) ranks Brown and Caldwell 47th among the nation's top 500 engineering firms and ninth largest in the sewer/waste market.

Burns & McDonnell

9400 Ward Parkway
Kansas City, MO 64114

Principal Contact: Bryan Claxton
Phone: 816-333-9400
Fax: 816-822-4366
E-Mail: bclaxton@burnsmcd.com
InfoMgtGrp@burnsmcd.com
Web: www.burnsmcd.com



Burns & McDonnell is a 107-year-old consulting firm that provides engineering, construction, environmental, and consulting services. Burns & McDonnell's original focus was on municipal water supplies when it began in 1898. Since then, its focus has largely stayed the course, but the tools it uses to make clients successful have evolved and transformed the way it does business. Currently, the company employs database platforms and GIS tools to provide municipal water and wastewater solutions including geodatabase design and implementation, infrastructure planning/management, and custom application development for the desktop and Internet.

Camp Dresser & McKee Inc.

One Cambridge Place
50 Hampshire Street
Cambridge, MA 02139

Principal Contact: Paula Albertazzi
Phone: 617-452-6000
Fax: 617-452-8000
E-Mail: albertazzipn@cdm.com
Web: www.cdm.com



Camp Dresser & McKee Inc. (CDM) has been an ESRI partner since 1986, providing professional GIS consulting services addressing every phase of the GIS life cycle. With more than 3,700 staff members in more than 100 offices worldwide, the company provides the expertise of a global consulting firm through local staff attuned to clients' individual needs. CDM supports water and wastewater clients (public, private, and utility) with a wide range of complete life cycle GIS services including needs assessments, business process analysis, GIS data development, GIS application development, training, and overall program management. With in-depth experience in wastewater collection and water distribution system modeling and integration, asset management, and systems integration with utility software systems, CDM has the unique ability to combine its extensive engineering knowledge base with its GIS expertise to provide well-designed and constructed GIS programs. CDM's GIS implementations are successful because in addition to being experts in the engineering/GIS disciplines and providing the highest-quality GIS databases and applications, its staff can help an organization understand how the technology improves its workflow. This alignment of GIS technology with the operations of an organization has allowed CDM clients to effectively see returns on GIS investments and a more productive workforce.

Carroll Engineering Corporation

949 Easton Road
Warrington, PA 18976

Principal Contact: John Daukshus
Phone: 215-343-5700
Fax: 215-343-0875
E-Mail: gis@carrollengineering.com
Web: www.carrollengineering.com



The Water and Sewer Asset Management System is an enterprise solution that enhances the mapping and asset organization of a water and sewer system. The entire water and sewer system can be visualized both as maps and as text-based lists of network features. It can store as-built drawings and other documents for complete system management of the entire system network. This application is built on the ArcGIS Desktop platform. By utilizing ArcObjects™ programming, it can be easily tailored to each client's unique needs and existing IT infrastructure.

Benefits of the Water and Sewer Asset Management System include

- Comprehensive water and sewer asset management program
- Document imaging and management of all engineering drawings
- Custom solution for ease of use
- Automatic updating of property data to tax parcels for monthly updates
- Property queries for easy location and retrieval
- Comprehensive database design

All GIS solutions from Carroll Engineering Corporation

- Use open source code, allowing for personalized features and customization.
- Are database independent, thus offering support for numerous RDBMSs.
- Easily integrate with existing municipal data, software, and resources.
- Are fully supported by Carroll Engineering Corporation.

CartêGraph Systems, Inc.

3600 Digital Drive
Dubuque, IA 52002

Phone: 563-556-8120
800-888-2656
Fax: 563-556-8149
E-Mail: info@cartegraph.com
Web: www.cartegraph.com



CartêGraph Systems, Inc., develops management software dedicated to the collection, management, and GIS analysis of data for virtually any public works asset including storm, sanitary sewer, and water components. CartêGraph software integrates asset management, work order management, and GIS into one easy-to-use suite. With the introduction of *flex*TECHNOLOGY, CartêGraph software is quickly modified to meet current management practices.

CartêGraph's *MAPdirector* for ArcGIS creates a dynamic link to ESRI's ArcGIS products. The *MAPdirector* module provides tools within the ArcGIS environment, allowing management of assets in existing GIS systems.

CartêGraph provides training, technical support, and data conversion in addition to partnering with outside organizations that specialize in engineering and data collection services. This provides clients with a total solution to their asset management needs.

The CEDRA Corporation

65 West Broad Street
Rochester, NY 14614

Principal Contact: Michelle Moore
Phone: 585-232-6998
Fax: 585-262-2042
E-Mail: cedra@cedra.com
Web: www.cedra.com



The CEDRA Corporation, established in 1985 by a group of practicing civil engineers, offers interoperable engineering/GIS software extensions for all versions of ArcGIS Desktop and ArcView® for water, wastewater, and storm water facilities as well as sewer modeling, parcel mapping, COGO, and enhanced CAD from both the engineering and information management aspects.

CEDRA is able to provide private and governmental clients productivity-enhancing software that handles geodatabases, coverages, and shapefiles.

Computronix (Canada) Ltd.

10216 124th Street Northwest, Suite 200
Edmonton, AB T5N 4A3
Canada

Phone: 800-359-3758
780-454-3700
Fax: 780-454-3838
E-Mail: info@computronix.com
Web: www.computronix.com
www.earthwon.com

Computronix (USA), Inc.

3199 South Wadsworth Boulevard, Level B
Lakewood, CO 80227-4802

Phone: 800-359-3758
720-962-6300
Fax: 303-462-4994
E-Mail: joshua@computronix.com
Web: www.computronix.com
www.earthwon.com



Coulter Mapping Solutions, Inc.

P.O. Box 43878
Louisville, KY 40253

Principal Contact: Scarlett Mattingly
Phone: 502-429-8435
Fax: 866-559-8812
E-Mail: scarlett@cmsgis.com
Web: www.cmsgis.com



Earthwon's Water Management Module is used by regulatory agencies and other stakeholders responsible for water infrastructure assets, inspections, and maintenance.

Earthwon® is used to manage water infrastructure facilities and assets such as dam components, manage inspection activities, generate and track work orders related to maintenance activities, assist with capital project planning, report on safety performance, and more.

Earthwon is an enterprise environmental software solution designed for organizations charged with environmental stewardship. Earthwon combines the functionality of project management, data management, workflow management, document management, and application integration in one application. Earthwon helps ensure that environmental regulations and business rules are enforced, environmental health and safety interests are protected, and environmental liability is minimized.

Earthwon integrates with clients' GIS data using ESRI's map display tools—MapObjects mapping on the desktop and ArcIMS on the Internet—to enable users to make effective and efficient environmental-based business decisions.

Additional subcategories

- Environment
- Natural resource management
- Conservation
- Hazardous materials management
- Remediation/Pollution control
- Environmental health

Coulter Mapping Solutions, Inc. (CMS), the leader in utility-specific GIS software, introduces CMSEdit for ArcGIS. This software provides an ArcGIS software-based multiuser editing and field collection capability for water and wastewater. Its modularized structure allows the analysis software to be used independently.

CMSEdit for ArcGIS does not require access to a centralized database to perform edits. This allows multiple users to simultaneously take their own portable PCs out into the field for field inventory collection and verification. Extensive use of custom drop-down lists and predefined default attributing makes entering field data as simple as point and click.

CUES, Inc.

3600 Rio Vista Avenue
Orlando, FL 32805

Principal Contact: Edward Sitler
Phone: 800-327-7791, ext. 364
Fax: 407-425-1569
E-Mail: eds@cuesinc.com
Web: www.cuesinc.com



Developed by CUES, Inc., Granite XP is a comprehensive data collection and infrastructure management software for the water/wastewater industry that now offers a flexible bidirectional interface to ESRI products. An ESRI business partner, CUES developed an integrated solution to create and analyze infrastructure data. The ESRI Map Plug-in allows users to view and drill down to assets located within GIS maps to perform inspections, collect GPS coordinates, and review all asset history. This provides municipalities and contractors with the ability to accurately map infrastructure in a cost-effective way regardless of whether a large GIS environment already exists. The Granite XP software helps municipalities meet GASB 34/CMOM regulatory requirements by enabling a proactive maintenance management program that is fully integrated to ArcGIS.

DCSE

95 Argonaut, Suite 260
Aliso Viejo, CA 92656

Principal Contact: Meade Maleki
Phone: 949-465-3405
Fax: 949-586-8141
E-Mail: mmaleki@dcse.com
Web: www.dcse.com



DCSE is a software product and service firm that specializes in developing GIS-based portal-, collaboration-, and workflow-oriented applications for the water and wastewater industry. DCSE was founded in 1990 by a combination of software developers and professional civil engineers focused on creating innovative solutions for water agencies, water districts, city water departments, and sewer collection/treatment agencies. DCSE offers a broad range of products and services that together form a comprehensive solution for applications of GIS in this industry. The company's solutions allow users to spatially enable documents (e.g., as-builts), link and view customer and asset information using GIS, and spatially enable workflows from the office to the field.

DHI Water & Environment

Agern Alle 5
Horsholm 2970
Denmark

Principal Contact: Lars Chr. Larsen
Phone: 45-45-169357
E-Mail: dhi@dhi.dk
Web: www.dhi.dk



DHI Water & Environment is an independent, international consulting and research organization authorized by the Danish Ministry of Science, Technology and Innovation as an Approved Technological Service Institute.

DHI's activities are based on the development and application of know-how and advanced technologies in coastal, rivers, ports, and offshore engineering as well as ecology, water resources, urban and industrial water, and other areas related to the water environment.

DHI offers a wide range of services and products including consulting services, physical model testing, environmental laboratory testing, reference materials, and software tools. Its staff numbers approximately 480 including 200 working in 16 international offices.

DigitalGlobe

1601 Dry Creek Drive, Suite 260
Longmont, CO 80503

Principal Contact: David Nale
Phone: 303-684-4234 Office
352-258-1631 Cell
Fax: 303-684-4048
E-Mail: dnale@digitalglobe.com
Web: www.digitalglobe.com



Earth Tech, Inc.

300 Oceangate, Suite 700
Long Beach, CA 90802

Principal Contact: Lorraine Ransome
Phone: 920-451-2737
Fax: 920-458-0948
E-Mail: lorrie.ransome@earthtech.com
Web: www.earthtech.com



Ecowise Technologies

16A Lithgow Street, Fyshwick
P.O. Box 1834, Fyshwick
Canberra, ACT 2609
Australia

Principal Contact: Lance Rees
Phone: 61-2-6270-7650
Fax: 61-2-6270-7631
E-Mail: lrees@ecowise.com.au
Web: www.ecowisetechnologies.com



DigitalGlobe (DG) owns and operates the world's highest-resolution commercial satellite providing global imagery coverage. DG's StormWater products include rapid, highly accurate mapping of impervious surfaces for storm water management applications. At present, numerous cities across the United States are employing DigitalGlobe's imaging and storm water mapping process for the foundation of their storm water programs.

Earth Tech, Inc., is a global provider of water management, engineering technology, environmental, transportation, construction, and information technology services. Through strategic growth, the company has expanded its technical capabilities, geographic presence, and client base. Headquartered in Long Beach, California, Earth Tech is a \$1.3 billion company employing 8,000 staff members in more than 150 offices worldwide. Earth Tech is a wholly owned subsidiary of Tyco International Ltd., a \$36 billion, publicly traded, worldwide manufacturing and service corporation.

Ecowise Technologies, a subsidiary of Ecowise Environmental, has expertise in the following:

- GIS business needs and functional requirements
- GIS modeling and analysis
- CAD-GIS integration
- Intranet/Internet GIS solutions
- Spatial data management
- Asset management
- System review, design, and implementation
- System customization and application development
- Data capture, conversion, and migration
- Remote sensing/Image analysis
- Map production/Cartographic services
- Project management

Ecowise has also developed a number of software tools including

- GIS-Lock—ArcGIS extension providing security management and license reporting
- AIRS—Automated mapping request system
- GPS Shaper—Automates the integration of GPS data into ArcSDE
- Enconn—Connectivity for substation internals and integration with customer information systems (CIS) and ENMAC
- Water/Sewer modeling package integration
- Sewer catchment load calculator
- Water static pressure calculator
- Automated reporting for water pressure zones

EFM Group, Inc.

5925 NW 95th Way
Gainesville, FL 32653

Principal Contact: Jerry Marquez
Phone: 352-377-1306
Fax: 888-289-0862
E-Mail: marquez@efmgis.com
Web: www.efmgis.com



EI Technologies, LLC

19750 East Parker Square Drive, Suite 100
Parker, CO 80134

Principal Contact: Nirav Shah
Phone: 720-851-1717
Fax: 720-851-5550
E-Mail: nshah@eitek.com
Web: www.eitek.com



Electronic Data Solutions

P.O. Box 31
Jerome, ID 83338

Principal Contact: Linda Dean
Phone: 208-324-8006
Fax: 208-324-8102
E-Mail: elecdata@elecdata.com
Web: www.elecdata.com



EFM Group, Inc., is a consulting engineering and GIS firm specializing in the building and implementation of water/wastewater GIS data for small to medium utilities. EFM has developed a highly unique application (GeoCon™) and process for creating water/wastewater GIS data with a sound connectivity model. The company's specialty is capitalizing on all the data source investments typically made by utility companies and consolidating them into a seamless GIS. It has a strong background in the planning, design, and operations of water/wastewater utility systems.

EI Technologies, LLC, provides cutting-edge GIS services to the water/wastewater industry. It is providing ArcGIS migration services to the industry with guaranteed results and has helped more than 100 local government agencies design, develop, implement, and use enterprise geospatial decision support systems. The company has developed its proprietary application, Cartographic Editing and Map Production System (CAMPS), to help the water/wastewater industry and other customers migrate their legacy map and business data into ArcGIS/ArcSDE format. CAMPS is designed to batch load geospatial data into Oracle® and Microsoft® SQL Server. CAMPS was developed using ArcObjects technology.

Electronic Data Solutions will design, build, install, and support data acquisition systems for water resource and wastewater treatment applications. The company configures complete systems including sensors, water samplers, flow meters, data loggers, field computers, GPS, telecommunications equipment, and the software to manage, analyze, and display the collected data in a GIS-compatible format.

HydroPlus® GIS, an ArcPad template, is an application that allows water resource managers to record multiparameter water quality data directly into the GIS. HydroPlus GIS integrates a Windows®/Windows CE computer, water quality probe, and a GPS receiver maintaining all the functionality of ArcPad. There is no need for data conversion or linking tables.

EMA, Inc.

1970 Oakcrest Avenue, Suite 100
St. Paul, MN 55113-2624

Phone: 651-639-5600

Fax: 651-639-5730

Web: www.ema-inc.com



EMA, Inc., is a full-service ESRI solutions provider. EMA is a leading technology and management consulting firm committed to helping wastewater, water, electric, and gas utilities; local government; and manufacturers solve complex problems. This commitment has shaped the firm's values and professional practices since its founding in 1975. EMA combines its strategy and implementation expertise to assist organizations in designing and implementing single desktop to enterprise ESRI GIS solutions that result in higher productivity, improved operational efficiencies, and better customer service.

EMA's GIS consulting services include

- Assessments and strategy development
- Business case and requirements analysis
- Data and application planning
- Conceptual design
- Technical/Software evaluation and selection
- Integration requirements
- Project management

The company's ESRI GIS implementation services include

- GIS and geodatabase data modeling
- System and data architecture
- ArcGIS application development
- ArcIMS Web architect solutions
- Systems integration
- Data conversion management
- Technology infrastructure, networks, and Internet/Intranet

EMA's ESRI solutions integration includes

- Work management systems
- Mobile dispatch and field systems
- Enterprise resource planning systems
- Document management systems
- Customer information/care systems
- Outage management systems
- SCADA/DA/EMS
- Asset/Facilities management systems

Enspira Solutions, Inc.

10475 Park Meadows Drive, Suite 200
Littleton, CO 80124

Principal Contact: Cindy Johnson

Phone: 303-741-8400

Fax: 303-799-6766

E-Mail: cjohnson@enspiria.com

Web: www.enspiria.com



Enspira Solutions, Inc., provides consulting, systems integration, data services, and technical support to enable its clients to improve their businesses through the intelligent use of technology. The company specializes in ESRI GIS, automated meter reading, mobile field dispatch, and asset/work management. Enspira offers the advantages of a small staff of experts in addition to the financial strength of its parent company, Osmose Holdings, Inc., with \$400 million in revenue.

Enspira's staff has extensive experience in designing and implementing solutions in ArcSDE (Oracle and SQL Server), ArcGIS, ArcIMS, Web technologies (e.g., .NET and Java™), ArcObjects, ArcInfo®, MapObjects, ArcFM™, and various other packages.

The company's services enable clients to fully realize the benefits of past, current, and future technology investments. Enspira offers

- Business and deployment planning
- Spatial data warehouse (GIS data hub)
- System deployment and integration
- System upgrades and optimization/tuning
- Data management

Eptisa

C/Arapiles 14
Madrid 28015
Spain

Principal Contact: Jose Hernandez Torrejon
Phone: 34-91-59-49500
Fax: 34-91-44-65546
E-Mail: eptisa@eptisa.es
Web: www.eptisa.es



Eptisa was set up as an independent engineering company in 1956 and is the longest-established company in its sector in Spain. Since its establishment, Eptisa has collaborated with both the public administration and private companies. As one of the major Spanish companies in the fields of engineering, architecture, and services, Eptisa has taken part in the economic development and technological modernization of the country. Eptisa has more than 1,300 staff members including more than 650 university graduates. Its teams are qualified in an extremely wide range of technical, scientific, economic, and social disciplines including engineering, architecture, geology, and biology.

Evans, Mechwart, Hambleton & Tilton, Inc.

5500 New Albany Road
Columbus, OH 43054

Principal Contact: Derek Mair
Phone: 614-775-4500
Fax: 614-775-4800
E-Mail: DMair@EMHT.com
Web: www.EMHT.com



Creative solutions to seemingly impossible problems are all in a day's work for Evans, Mechwart, Hambleton & Tilton, Inc. (EMH&T), one of the leading civil engineering, surveying, and mapping firms in the Midwest. With headquarters in Columbus, Ohio, and offices in Cincinnati, Ohio; Indianapolis, Indiana; and Charlotte, North Carolina, EMH&T is a multidisciplinary firm offering an extensive array of services to both public and private sector clients.

Founded in 1926, EMH&T has the experience and know-how necessary to define and implement industry-leading GIS software solutions. To support these services, EMH&T fully supports ESRI's ArcGIS software product line and Azteca Systems' Cityworks® suite of asset management software.

FLO-2D Software, Inc.

P.O. Box 66
102 County Road 2315
Nutrioso, AZ 85932

Principal Contact: Jim O'Brien
Phone: 928-339-1935
E-Mail: flo2d@frontiernet.net
Web: www.flo-2d.com



FLO-2D Software, Inc., presents FLO-2D, a two-dimensional flood routing model that is a valuable tool for delineating flood hazards or designing flood mitigation by routing a flood hydrograph, predicting areas of inundation and simulating flood wave attenuation. The model predicts river flooding, but it can also analyze unconfined alluvial fan flows, dam break flooding, mud/debris flows, urban flooding, and the overland progression of ocean storm surges and tsunamis. Details such as buildings, streets, rainfall, infiltration, and levees can be added to the flood simulation. Channel flow is simulated with either natural, rectangular, or trapezoidal cross sections. Channel to floodplain discharge exchange, including return flow to the channel, is simulated. Input data processing and postmodel mapping routines use ESRI MapObjects controls. FLO-2D is on the Federal Emergency Management Agency list of approved hydraulic models. It has been used by federal agencies, including the Army Corps of Engineers and United States Geological Survey, and has been applied on hundreds of projects by consultants worldwide.

FoundOnEarth

448 Traverso Avenue
Los Altos, CA 94022-1134

Phone: 650-947-9811
Fax: 650-949-5391
E-Mail: gis@foundonearth.com
Web: www.foundonearth.com



Gateway Mapping, Inc.

240 West Center Street, Suite 200
Orem, UT 84057

Phone: 801-221-7656
Fax: 801-226-0394
E-Mail: drd@jub.com
Web: www.gatewaymapping.com



GBA Master Series, Inc.

10561 Barkley, Suite 500
Overland Park, KS 66212

Principal Contact: Jim Graham, P.E.
Phone: 913-341-3105
Fax: 913-341-3128
E-Mail: jgraham@gbams.com
Web: www.gbams.com



FoundOnEarth provides customized GIS solutions to the water industry that take full advantage of both the analytical strengths and the data visualization capabilities of ESRI's GIS technology using ArcInfo, ArcView, ArcGIS 3D Analyst™, ArcGIS Spatial Analyst, ArcGIS Geostatistical Analyst, and ArcView 3.x. FoundOnEarth develops decision support and spatial information management systems, integrating information from multiple sources with links to simulation models, statistical software, and spreadsheets. Such systems can be used in support of water use assessment and water demand management and include topographic, hydrographic, and hydrologic data; information on hydraulic infrastructure, water treatment, and other facilities; and administrative data such as communities, water districts, and river basin agencies.

SPATIAL IM simplifies infrastructure management for local governments. It is used to record and retrieve information about the location and condition of assets including water, sewer, storm drainage, electrical, roads, bridges, sidewalks, and signs. SPATIAL IM is an ArcView 9.x extension.

- Data entry: Quickly enter and edit attribute information right from the map. Data entry is enhanced with user-defined drop-down lists and built-in calendars.
- Records management: Keep historical information on any infrastructure asset. Keep an unlimited amount of event histories for maintenance, inspection, and repairs. Quickly cycle through historical records and print useful reports.
- Document management: Quickly attach any document to a mapped asset. Attach and manage any number of files and any kind of file including digital photographs and videos, CAD drawings, work orders, forms, Web sites, and folders.
- Multiuser support: Integrate information obtained from multiple users. Integrate data from shapefiles or geodatabases.

The *GBA Master Series*® software suite designed by civil engineers and developed by software specialists includes programs for agencies that operate and maintain water and wastewater infrastructure systems. All programs integrate with GBA Master Series, Inc.'s innovative GIS products, which are extensions of ESRI's ArcGIS software. Its expertise/experience provides clients with complete management solutions and exceptional implementation services.

Geoambiente Sensoriamento Remoto Ltda.

Avenida Anchieta, 117-Jardim Nova Europa
São José dos Campos, SP 12242-280
Brazil

Principal Contact: Izabel Cecarelli
Phone: 55-12-3941-1251
Fax: 55-12-3941-1251
E-Mail: izabel@geoambiente.com.br
Web: www.geoambiente.com.br



GEOCOM Informatik AG

Bernstrasse 21
Burgdorf, BE 3400
Switzerland

Principal Contact: Markus Wüthrich
Phone: 41-34-428-3030
Fax: 41-34-428-3032
E-Mail: markus.wuethrich@geocom.ch
Web: www.geocom.ch



Geographic Resource Solutions

1125 16th Street, Suite 213
Arcata, CA 95521

Principal Contact: Kenneth Stumpf
Phone: 707-822-8005
Fax: 707-822-2864
E-Mail: grs@grsgis.com
Web: www.grsgis.com



Geoambiente Sensoriamento Remoto Ltda. is a geographic information technology company that focuses on natural resources. As a priority, it uses, in its work, remote sensing and geographic information system technologies to develop solutions ranging from case studies to consultancy and training to full-fledged, customized geographic information systems. It also offers Internet services and consultancy related to GIS and remote sensing.

GEOCOM Informatik AG has 10 years of experience in the GIS utility business. The company is highly specialized in the development of applications based on ArcGIS and is a leading player in Central Europe. The product GEONIS for ArcGIS offers applications for water and wastewater as well as gas, electricity, telecommunication, cable TV, and so forth. All applications are fully generic and tuned to the local standards of each country or state. Several hundred installations in Europe are in full production.

The foundation of a successful geographic information system is accurate and reliable data. Geographic Resource Solutions uses the latest technologies to create, assemble, and validate GIS-ready water/wastewater system data. For example, using tools that read directly from attribute (maintenance) database information, the company automates the placement of water/wastewater system features and attributes to eliminate redundancy and errors while improving efficiency and accuracy. Its years of experience in data services and operations and its sensitivity to customer needs ensure the company meets the highest standards in data development.

Geographic Technologies Group

648 North Spence Avenue
Goldsboro, NC 27534

Phone: 919-759-9214
888-757-4222 Toll free

Fax: 919-759-0410
E-Mail: jbarthelemy@geotg.com

Web: www.geotg.com



Geographic Video Systems, LLC

412 East Gowan Road
North Las Vegas, NV 89032

Phone: 702-942-7473
866-637-7473 Toll free

Fax: 702-642-9936
E-Mail: Jeanne.perales@giseepipe.com
Web: www.giseepipe.com



George Butler Associates, Inc.

9801 Renner Boulevard
Lenexa, KS 66219

Phone: 913-492-0400
913-577-8469 Direct

Fax: 913-577-8346
E-Mail: lbarnhill@gbutler.com
Web: www.gbutler.com



Geographic Technologies Group (GTG) provides clients with a total water/wastewater solution including needs assessment/implementation planning, ArcGIS data model design and setup, GPS data collection, incorporation of existing IT investments (utility billing, customer service data, etc.), end user tools for the intranet (ArcIMS software-based and ArcGIS Engine applications), and portable field tools for work order tracking.

Geographic Video Systems, LLC (GVS), is a Las Vegas-based software development company specializing in the development of premier software for the effective management of community and municipal infrastructures. GVS joins the ESRI network of business partners with the innovative GISee™ Pipe software suite, which integrates with ArcView to form a patented solution that will forever change piping system assessment, maintenance, and management.

Utilizing GIS-based mapping technology such as ArcView, the products in the GISee Pipe suite provide a comprehensive solution for managing pipe inspection and assessment, with unprecedented access to pipe inspection video. A single click on any pipe feature displays a video of that pipe.

GISee products are targeted for a full spectrum of industry professionals including municipalities, engineering firms, pipe inspection teams, and specialty video-truck manufacturers.

The demand for safe and plentiful water is increasing dramatically. As wastewater professionals, George Butler Associates, Inc. (GBA), must meet the challenge of protecting its most valuable resource by combining the company's use of technology with natural solutions. GBA is a leader in the design of wastewater collection systems. Its experience and expertise include the planning, engineering design, construction management, and rehabilitation of subdivision sewers, interceptor sewers, and storm and sewage pumping stations.

For planning, operation and maintenance, and system administration, GBA has provided assistance to many sewer agencies and cities including services for

- Sewer master planning
- Capacity modeling
- Development of capital improvement plans
- Development of line-cleaning strategies

GBA GIS/Asset Management Services has the staff and resources to provide

- ArcPad customization
- Field inventory
- Map maintenance
- GPS/Surveying
- Database design services
- Data conversion

These services meet GASB, CMOM, and NPDES compliance and AM/FM/GIS requirements and reports. Combining these asset management tools with GIS capabilities and GBA's other leading infrastructure design, modeling, and rehabilitation capabilities makes GBA a complete infrastructure management solution.

Geo-Spatial Solutions, Inc.

P.O. Box 328
Bend, OR 97709

Principal Contact: Jer Camarata
Phone: 541-330-0371
Fax: 541-749-2045
E-Mail: jer@geospatialolutions.com
Web: www.geospatialolutions.com



Geo-Spatial Solutions, Inc. (GSS), is the premier GIS and GPS consultant for water districts. Providing award-winning solutions for national, state, and municipal governments; private businesses; and nonprofit water resource organizations, GSS is the first GIS consultant to offer turnkey Web-based GIS solutions to water districts throughout the West.

GSS's flagship product, geolrrigation™, automates internal business processes while managing water resource information. geolrrigation is designed to meet the needs of managers, planners, office staff, field staff, water patrons, and the public to query, view, and analyze GIS and related tabular data in an integrated fashion.

As an ESRI business partner, GSS provides

- Web, desktop, and mobile GIS development
- Database design and implementation
- Data conversion
- Systems integration

Backed by state-of-the-art infrastructure, GSS has more than 40 years of collective experience. GSS staff consists of multidisciplinary technicians, analysts, programmers, and business professionals noteworthy for their accomplishments and integrity.

Greenman-Pedersen, Inc.

10620 Guildford Road
Jessup, MD 20794

Phone: 301-470-2772
Fax: 301-490-2649
E-Mail: PMattejat@gpinet.com
Web: www.gpinet.com



Greenman-Pedersen, Inc. (GPI), specializes in GIS solutions for managing drainage infrastructure, especially storm water best management practices. The company's GIS deliverables are routinely used for compliance with NPDES and GASB 34 regulations. GPI is involved from initial data capture to migration to enterprise systems. GPI is versed in integrating data collected under different approaches and assembling comprehensive GIS models. GPI has expertise in performing large-scale investigations to verify office data or field recovery assets. The company's value comes in the ability to perform detailed assessments in a wide range of field conditions. GPI relies on ArcPad as its field data tool since it provides extensive GPS and GIS tools. The company designs GIS database models in ArcView projects or ArcGIS geodatabases to store and track data. GPI also creates custom tools for clients to view, query, and report their assets. The company utilizes ArcGIS with Visual Basic for Applications, MapObjects in Visual Basic, and ArcIMS.

GRW, Inc.

801 Corporate Drive
Lexington, KY 40503

Phone: 800-432-9537
Fax: 859-219-9059
E-Mail: dbelcher@grwinc.com
kmeyer@grwinc.com
Web: www.grwinc.com



GRW, Inc., is one of the nation's leading GIS, mapping, surveying, and engineering firms, providing award-winning ESRI services across the United States. It has more than 25 years of experience in the industry and more than 250 staff members, providing immense capacity and innovative resources. GRW received the 2004 ESRI Foundation Business Partner Award for accomplishing an extensive GIS implementation in ArcSDE geodatabase format, including a Web-based browser, for the Louisville Water Company. GRW's expertise includes water, wastewater, sewer, and related projects for municipal clients, utility companies, and federal and statewide agencies located across the nation. Its comprehensive services include the following:

- GIS needs analysis, design, and implementation
- GIS database development
- Intranet/Internet development/Web-based GIS
- Scanning, data conversion, parcel mapping
- Custom programming
- Customized training and on-site technical support
- GPS surveying, control, utility data collection
- Aerial photography, airborne global positioning system/inertial measuring unit, lidar
- Aerial triangulation, in-house photo lab
- Photogrammetric mapping, digital orthophotography
- Engineering and utility design

GSWW, Inc.

1016 Mopac Circle, Suite 201
Austin, TX 78746

Principal Contact: David Koberlein
Phone: 512-306-9266
Fax: 512-306-9550
E-Mail: kdavid@gswwengineers.com
Web: www.gswwengineers.com



GSWW, Inc., is a full-service civil and environmental engineering firm dedicated to the advancement of management of buried municipal assets, including water, wastewater, and storm sewer systems, using GIS and advanced inspection and evaluation techniques.

Hansen Information Technologies

11092 Sun Center Drive
Rancho Cordova, CA 95670

Phone: 800-825-9316
Fax: 916-921-6220
E-Mail: information@hansen.com
Web: www.hansen.com



Hansen Information Technologies is a leading provider in government solutions. Hansen's latest offering features zero client-side software and is 100 percent Web browser based. This feature-rich product eliminates the issues of interfacing, plug-ins, message brokers, and adapters, which have typically plagued complex enterprise government solutions. Hansen's Map Drawer integrates ArcIMS to provide map interaction within the workflow. Users do not have to go outside the computerized maintenance management system (CMMS) to query and display assets, work orders, scheduled maintenance, condition observations, and so forth, on the map. Hansen's GeoAdministrator product is an ArcGIS extension for integrated editing of both spatial and attribute data in the GIS database and operations tables simultaneously. Using GeoAdministrator, water/wastewater users can create asset networks in GIS and inventory records on the fly or split or join main lines to insert taps or service connections from the map and retain the maintenance history or schedules. Hansen has more than 20 years of experience in government solutions, and 12 of the 15 largest cities and counties run on Hansen solutions.

har*GIS LLC

6551 South Revere Parkway, Suite 210
Centennial, CO 80111-6411

Principal Contact: Jim Hargis
Phone: 303-220-0253
Fax: 303-643-3958
E-Mail: jim@har-gis.com
Web: www.truckmap.com



har*GIS LLC delivers Field Information Systems™ that dramatically improve field force productivity. TruckMap*™ software integrates wireless communications, enterprise connectivity, and GPS services to provide mobile field crews and dispatchers with the information and support they need—when they need it. For water/wastewater utilities, the company offers GeoForms™ field data collection; Geollustrator™ and Geolmager™ for multiple GIS systems, orthophoto, and contour data; GeoMessenger™ for crew messaging and tracking; Trimble® ruggedized GPS for location; and custom interfaces to clients' work management systems. Its exclusive "gloves-on" no-keyboard interface and no-programming rapid implementation service provide swift payback within a few months.

Hummingbird

1 Sparks Avenue
Toronto, Ontario M2H 2W1
Canada

Phone: 416-496-2200
Fax: 416-496-2207
E-Mail: Hugh.ritchie@hummingbird.com
Web: www.hummingbird.com/solutions/gis.html



Hummingbird Enterprise™ for ESRI, an integrated solution with ESRI's ArcIMS software, offers a Web-based mapping interface for document and records management and queries by linking ESRI's ArcIMS software and Hummingbird DM™, an integral component of Hummingbird Enterprise. Hummingbird Enterprise for ESRI is applicable across a broad range of industries including government, utilities, water and wastewater, oil and gas, military, and telecommunications. All geographic-based, business-critical information can immediately be linked through one Web interface, not only to data but also to a wide range of documents such as photographs, engineering drawings, field notes, and digitized audio and video. "Hummingbird Enterprise for ESRI implementation is the keystone of our ability to move paper and map information through the company. It's our backbone now and for the future," said Joe Clark, Northern Colorado Water Conservancy District, department head of information technology.

IDModeling, Inc.

Three Pointe Drive, Suite 208
Brea, CA 92821

Principal Contact: Paul Hauffen
Phone: 714-482-0808
Fax: 714-482-0802
E-Mail: paulhauffen@idmodeling.com
Web: www.idmodeling.com



IDModeling, Inc., offers infrastructure data modeling and services to both utilities and consultants in the specialty fields of water, sewer, and recycled water modeling. IDModeling focuses on hydraulic model training, construction, development, updating, steady state or EPS calibration, analyses, mapping, QA/QC, and value engineering. Project illustrations include GIS integration toward an EPA IDSE SSS-compliant water model for Bellingham, Washington; operational applications of a water model for the city of Hesperia, California; and multiple training courses given to some of the world's largest engineering companies. IDModeling is certified as an SBE, MBE, and DBE and is flexible with working relationships to enhance the user and user client's project experience.

Impress Software Solutions, Inc.

460 Totten Pond Road, Suite 200
Waltham, MA 02451

Principal Contact: Stephen Fahey
Phone: 781-419-5621
Fax: 781-419-5666
E-Mail: Stephen.fahey@impress.com
Web: www.impress.com



Impress Software Solutions, Inc., is a leading provider of packaged integration applications (I.Apps™) that enable quick and cost-effective integration of project management and geographic information systems resulting in streamlined business processes across multiple enterprise systems. Impress I.Apps allows integration to be completed at a fraction of the time and cost compared to traditional enterprise application integration development platforms. Impress Software customers include British Petroleum, California Municipal Water District, Marin County Water District, Pacific Gas and Electric, and Total.

Indus

3301 Windy Ridge Parkway
Atlanta, GA 30339

Principal Contact: Matt McAluney
Phone: 770-989-4156
Fax: 770-989-4461
E-Mail: matt.mcaluney@indus.com
Web: www.indus.com



Indus is a leading provider of service delivery management solutions, which help clients in a broad array of industries optimize the management of their customers, assets, workforce, spare parts inventory, tools, and documentation to maximize performance and customer satisfaction while achieving significant cost savings. As a result, clients improve profitability, reduce costs, increase capacity and competitiveness, improve customer service, and ensure regulatory compliance. Indus solutions have been purchased by more than 400 companies in 40 countries, representing diverse industries including manufacturing, utilities, telecommunications, government, education, transportation, facilities and property management, consumer packaged goods, and more.

InfoCode Corporation

3314 West End Avenue, Suite 101
Nashville, TN 37203

Phone: 615-269-6930
Fax: 615-269-6872
E-Mail: david.speight@infocode.com
Web: www.infocode.com



InfoCode Corporation specializes in developing data models, implementing GPS technology for asset management, and creating a more streamlined workflow for water/wastewater utilities. As an ESRI business partner and Tennessee's only authorized Trimble business partner, InfoCode is the leading provider of GIS/GPS solutions for field and office operations.

Information Management

P.O. Box 131077
The Woodlands, TX 77393-1077

Principal Contact: H. Wilson McCoy
Phone: 936-321-9982
E-Mail: hwmccoy@infomgt.net
Web: www.infomgt.net



The Utility Data Management System (UDMS) is a customized GIS based on ESRI ArcView software. It is a complete infrastructure management tool for utility district operators, municipalities, cities, and communities. With the UDMS program, one can organize and display infrastructure data in a variety of formats. The user has the power to visualize, explore, query, and analyze data geographically, thus uncovering many trends and patterns. Digital images of manhole repairs attached as attributes to each manhole, as well as MPG video sewer inspections attached as attributes to their respective line segments, provide a historical record of the condition of the infrastructure for years to come.

Keck & Wood, Inc.

2425 Commerce Avenue
Building 2100, Suite 300
Duluth, GA 30096

Phone: 678-417-4000
Fax: 678-417-8785
Web: www.keckwood.com



Founded in 1954, Keck & Wood, Inc., has a long and successful history of providing engineering, planning, software development, GIS, and related mapping services to cities, counties, and utility authorities throughout the South. It offers a full range of services geared specifically to the water and wastewater industry including engineering design, field data collection and inventory, GIS database design, CAD to ESRI shapefile or geodatabase conversion, utility system modeling, ESRI software sales, and software customization and development on ESRI platforms such as ArcIMS, MapObjects, and ArcGIS Engine. In addition to reselling standard ESRI software, Keck & Wood has developed MOSAIC Map Viewer, a software title built on ESRI's MapObjects. It allows nontechnical individuals to access GIS/map data in the field or office easily and efficiently. Keck & Wood also has an ESRI Authorized Instructor on staff to teach *Introduction to ArcGIS I and II* classes.

KOM-PAKT Ltd.

Warsaw, ul. Górczewska 137
Warsaw, Mazowieckie 01—459 Warsaw
Poland

Principal Contact: Roman Smoliński
Phone: 48-22-533-3482
Fax: 48-22-533-3499
E-Mail: roman.smolinski@kompakt.pl
Web: www.kompakt.pl



KOM-PAKT Ltd.'s main activity is software development. The company provides billing, customer service, and network operation support systems. Software is addressed to the water/wastewater and heat distribution industries. Technology is based on Java, Oracle, and ESRI (ArcSDE, ArcIMS, and ArcGIS Engine) software.

Lenocker & Associates

144 East Emerson Avenue, Suite A
Orange, CA 92865

Principal Contact: W. Tracy Lenocker
Phone: 714-998-2900
Fax: 714-998-7618
E-Mail: tracy@lenocker.com
Web: www.lenocker.com

Lenocker & Associates

Lenocker & Associates has provided consulting services in the area of water resources to public agencies and civil engineering firms for more than 25 years. The company's civil engineers specialize in GIS mapping of municipal water supply systems, wastewater collection systems, storm water collection systems, and hydrologic mapping. Other specialty areas include flood control, sediment transport, dam outlet and spillway design, levee studies, and water treatment plant design.

Lenocker & Associates is well known for its numerical modeling and computer software for water resources. The principals of the company are also the founders of CIVILSOFT, Inc., which developed many hydraulic models.

Locus Technologies

1333 North California Boulevard, Suite 350
Walnut Creek, CA 94596

Phone: 925-906-8100
Fax: 925-906-8101
E-Mail: thawh@locustec.com
Web: www.locustec.com



EIM™ is a robust, fully Web-based system designed to manage the life cycle of sampling, analytical, and geotechnical data collected by the water/wastewater/storm water industries to comply with environmental regulations and reporting requirements. EIM features a robust toolbar interface to ESRI ArcView 9 that allows ESRI users the ease of using a centralized Web-based data system and the ability to perform sophisticated mapping using ESRI products. Data is electronically uploaded, verified, and validated and is available for all parties to analyze and create custom reports. ESRI users have the advantage of using a single database without worrying about keeping separate data sources in sync. EIM is the long-term data management tool for the water/wastewater industry within a fully customizable, secure, and accessible Web solution. With more than 28 million records, EIM meets the needs of the nation's largest companies to manage data, reduce liability, and meet regulatory requirements in a secure yet accessible environment.

MaintStar

28 Hammond, Unit D
Irvine, CA 92618

Principal Contact: Dimitry Poretsky
Phone: 800-255-5676
Fax: 949-458-7626
E-Mail: dp1@maintstar.com
Web: www.maintstar.com



MaintStar offers full-featured asset and maintenance management software designed for wastewater, storm water, facilities, fleet, and other municipal agency use and integrated with ESRI systems for GIS functionality.

McKim & Creed, P.A.

200 MacKenan Court
Cary, NC 27511

Principal Contact: Janet Jackson
Phone: 919-233-8091
Fax: 919-233-8031
E-Mail: jjackson@mckimcreed.com
Web: www.mckimcreed.com



Established in 1978, McKim & Creed, P.A., has grown from a single office generalist to an infrastructure specialist with more than 320 professionals working in offices throughout the Southeast. McKim & Creed is ranked among ENR's top 500 design firms. McKim & Creed provides the following services to its clients: engineering (civil, environmental, instrumentation and controls/SCADA, structural), geomatics (surveying and mapping including GIS, GPS, hydrographic surveying, and photogrammetry), and landscape architecture. McKim & Creed's GIS staff members are involved in the following service offerings: needs and requirements assessment, system design, implementation/strategic planning support, technical support services, ESRI software migration, database design and development, data conversion, GIS standards development, hardware/software installation and migration, project management, and customized GIS training.

Michael Baker Jr., Inc.

3601 Eisenhower Avenue, Suite 600
Alexandria, VA 22304

Phone: 703-960-8800
Fax: 703-960-9125
E-Mail: rhanson@mbakercorp.com
Web: www.mbakercorp.com



Michael Baker Jr., Inc., is a premier provider of geospatial information technology (GIT) solutions that range from traditional GIS and GPS services to the geospatial enabling of enterprise information systems. With more than 50 years serving water and wastewater clients, Baker understands that supplying services to the general public and private sector is an increasingly difficult mission complicated by stricter regulatory requirements and increasing costs.

To be successful in this environment, Baker's solutions incorporate ESRI's application and data management technology.

Baker has developed a series of analytical tools and data management strategies for water and wastewater customers based on the ArcGIS architecture that supports collection, distribution, treatment, storage, and system rehabilitation. Baker's GeoLink® mapping software is being used extensively for asset management and field data collection.

At Baker, the company views the GIT challenges its clients face as invitations to innovate.

MWH Soft, Inc.

300 North Lake Avenue, Suite 1200
Pasadena, CA 91101

Phone: 626-568-6868
Fax: 626-568-6870
E-Mail: mwhsoft@mwhsoft.com
Web: www.mwhsoft.com



MWH Soft, Inc., is a leading global provider of geospatial environmental and water resources software designed to meet the technological needs of utilities, government industries, and engineering organizations worldwide. Its clients include the majority of the largest North American cities and ENR top design firms.

National Association of GIS Centric Software certified, MWH Soft geocentric water resources modeling suite offers the most advanced water, sewer, and storm systems hydraulic and water quality analysis capabilities for power ArcGIS users. Its products empower thousands of engineers across the globe to competitively manage, design, maintain, and operate highly efficient and reliable infrastructure systems. MWH Soft also offers International Association for Continuing Education Training-certified training courses.

MWH Soft Press publishes comprehensive textbooks on the theory and practical application of the latest technological advances in water resources engineering. Written by industry experts and featured in the American Water Works Association bookstore, these authoritative books help engineers acquire the vital knowledge they need to succeed.

NEOKART GIS Ltd.

Sapiezynska 10
Warsaw 00-215
Poland

Principal Contact: Roman Kawecki
Phone: 48-22-530-59-10
Fax: 48-22-530-59-09
E-Mail: neokartg@neokartgis.com.pl
Web: www.neokartgis.com.pl



Established in 1991 as a GIS consultancy, NEOKART GIS Ltd. offers a range of services. These include GIS consulting, data analysis, system design and development, and digital mapping as well as software and hardware equipment procurement, installation, testing, and training.

The capability at NEOKART GIS is based largely on ESRI software solutions. Through the execution of numerous projects, NEOKART GIS has developed a strong capability in the use of geographic information systems for the analysis of all forms of spatial data, with particular emphasis on environmental protection/management, water management, cadastral systems, facilities management, and human security management.

NewCom Technologies, Inc.

6000 Grand Avenue
Des Moines, IA 50312

Principal Contact: Jim Petro
Phone: 800-626-6234
Fax: 515-274-9622
E-Mail: jpetro@newcomtech.com
Web: www.newcomtech.com



NewCom Technologies, Inc.'s origins are rooted in telecommunications. Over the course of 30 years, its senior associates have engineered and managed more than 200,000 miles of outside plants for major cable television operators and telephone companies, always utilizing the latest technology. Now this advanced technology is available to water and wastewater operators in an easy-to-use and inexpensive set of ArcMap™ tools to make the collection and reporting of day-to-day activities quick, simple, and linked to the plant technical and spatial (maps) data.

Nobel Systems

1845 Business Center Drive, Suite 130
San Bernardino, CA 92408

Principal Contact: Glenn Fong

Phone: 909-890-5611

Fax: 909-890-5612

E-Mail: glennfong@nobel-systems.com

Web: www.nobel-systems.com



GeoViewer Pro

GeoViewer Pro is a browser application written using Microsoft .NET technology, Visual C# .NET programming language, and ESRI's ArcIMS and ArcSDE applications. GeoViewer Pro allows a user to view, query, or print from a GIS. Some important functions that GeoViewer Pro provides include the ability to (1) create and print a map; (2) run textual and spatial queries; (3) link to external databases (Access, SQL, Oracle, ArcSDE); (4) link scanned images to spatial features (embedded document management system); (5) redline a map; (6) create custom Crystal Reports®, and so forth; and (7) integrate with asset management systems, and so forth. GeoViewer Pro allows an organization to deploy a GIS throughout the enterprise over a network, intranet, or Internet. Furthermore, GeoViewer Pro is easy to learn and use.

GeoViewer Express

GeoViewer Express is a Web-based application written using Microsoft ASP.NET technology used in conjunction with ESRI's ArcIMS and ArcSDE applications. GeoViewer Express allows a user to view, query, or print from a GIS. Some important functions that GeoViewer Express provides include the ability to (1) create and print a map; (2) run textual and spatial queries; (3) link to external databases (Access, SQL, Oracle, ArcSDE); (4) export maps to PDF; (5) export spatial data to the client PC; and (6) search by predetermined criteria such as assessor's parcel number, name, address, street intersection, and so forth. GeoViewer Express allows an organization to deploy a GIS throughout the enterprise over a network, intranet, or Internet. Furthermore, GeoViewer Express is easy to learn and use and was developed for the novice GIS user.

GeoViewer Desktop

GeoViewer Desktop is a browser application written using ESRI's ArcGIS Engine technology, which allows a user to view, query, or print from a GIS. Some important functions that GeoViewer Desktop provides include the ability to (1) create and print a map with the map composer function; (2) run textual and spatial queries; (3) link to external databases (Access, SQL, Oracle, ArcSDE); and (4) link scanned images to spatial features (embedded document management system), and so on. Also, tools such as valve isolation, flow direction, and upstream and downstream tracing are included with GeoViewer Desktop. GeoViewer Desktop allows an organization to deploy a GIS throughout the enterprise in a timely and rapid manner. Furthermore, GeoViewer Desktop is easy to learn and use.

PrintWorks

PrintWorks is a plotting application written for ESRI's ArcMap and ArcView 9.x, which allows a user to create high-quality atlas maps in PDF or JPG format. Some important functionality that PrintWorks provides includes the ability to (1) print the entire atlas map book or selective pages, (2) print selective attribute information for the respective atlas map(s) printed, (3) select a particular resolution from 50 to 600 dpi to create the atlas map, (4) embed a public agency's logo onto the atlas map, and (5) include other pertinent information on the atlas map such as revision date and grid number. PrintWorks allows the user to produce high-quality atlas maps in a matter of minutes because the software is simple to use and deploy to multiple individuals in an organization.

OneGIS, Inc.

115 Perimeter Center Place, Suite 942
Atlanta, GA 30346

Phone: 678-641-8815
Fax: 413-714-8868
E-Mail: info@onegis.net
Web: www.onegis.net



OneGIS, Inc., specializes in the development of turnkey solutions for the water/wastewater market. OneGIS focuses its development and implementation efforts solely on ESRI-based applications.

With its standards-based approach to developing enterprise solutions, users may recognize the potential competitive advantage of a properly executed and integrated enterprise management solution. Performance is no longer measured only through cost efficiency but covers such issues as maximizing operations, taking advantage of technological efficiencies, environmental awareness, and being innovative through business processes.

The company's implementation strategy strives to assist utilities with seamless transitions from departmental business models to an enterprise-wide model using strategy, innovation, and ingenuity. AM/FM/GIS, warehouse management system, network analysis, CIS, document management, and client-driven software solutions are a few of the technologies in which the company specializes. Regardless of budget or existing software, OneGIS will provide clients with the best solution to take their businesses to the next level.

Origin GeoSystems

1250 Winchester Parkway, Suite 100
Smyrna, GA 30080

Phone: 770-432-6000
Fax: 770-432-6779
E-Mail: sales@origingis.com
Web: www.origingis.com



Origin GeoSystems is the developer of the Origin GIS software suite including Origin GIS Water. Origin GIS Water, an extension to ArcGIS, was developed to streamline the process of GIS editing and map maintenance by water and wastewater utilities. This product includes an intuitive yet configurable user interface and complete water and wastewater feature and symbol sets that can be combined into a single data model. Its functionality includes attribute inheritance when placing network features, configurable feature insertion toolbars, feature templates (for group insertion and management), trace query tools (allowing multiple tracing tasks for feature selection and report generation), data integrity and validation tools, automatic geonumbering capabilities, and batch-plotting tools. Origin GIS Water can significantly increase the efficiency and productivity of mapping users transitioning from CAD or paper records to GIS or provide an upgrade for users of core ESRI or other vendors' GIS products.

Orion Technology Inc.

1550 Sixteenth Avenue, Building "C" North
Richmond Hill, ON L4B 3K9
Canada

Principal Contact: Faizal Hasham
Phone: 905-508-6900
Fax: 905-737-0567
E-Mail: fhasham@oriongis.com
Web: www.orion-gis.com



Orion Technology Inc. is dedicated to creating leading-edge IT and GIS solutions and has achieved strong success in securing and delivering projects for reputable clients worldwide.

As a technology consulting and services integration company, Orion has worked with clients throughout North America, Europe, Asia, Africa, and the Middle East—integrating spatial technology into all facets of business. Orion's flagship solution, OnPoint, blends seamlessly with ESRI's ArcIMS to empower data by integrating GIS in Web applications including many water/wastewater applications.

With unrivaled strength in integrating diverse databases and applications, Orion helps organizations use enterprise thinking to conduct business effectively on the Web.

PBS&J

482 South Keller Road
Orlando, FL 32810-6101

Principal Contact: Dr. Prasad Chittalaru
Phone: 407-647-7275
E-Mail: PVChittalaru@pbsj.com
Web: pbsj.com



PBS&J is a leader in the engineering industry and in applying GIS technology for utilities master planning. A recent enhancement to existing services is the development of GeoAnalyzer, a GIS tool to automate data analysis for water and wastewater master planning. The GeoAnalyzer, accessed from the ESRI toolbar, automates utility-related spatial analysis and assists in identification and prioritization of capital improvement projects to satisfy specified criteria. Population and projected growth with related load factor information is easily incorporated into the decision-making process. PBS&J continues to make the power of GIS available to public works providers.

Pixxures, Inc.

15000 West 64th Avenue
Arvada, CO 80007

Phone: 303-302-8600
Fax: 303-302-8601
E-Mail: tburns@pixxures.com
Web: www.pixxures.com



Pixxures, Inc., founded in 1999 and headquartered in Arvada, Colorado, has become a leading provider of cost-effective GIS and mapping services, digital orthophotography, and customized spatial delivery systems for the water and wastewater industry, utilizing ESRI technology.

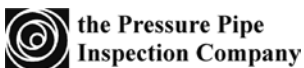
Many of Pixxures' water and wastewater clients report that they are unable to realize the full benefits of their GIS because of inconsistent, incomplete, and unreliable data layers. These inconsistencies have often been the result of different data sources, varying accuracies, and controls or errors in data capture and input. Traditional methods for correcting these inconsistencies have been time consuming and often cost prohibitive.

Pixxures has developed a unique vector alignment process, using proprietary technology and designated LineWorks™, that has dramatically improved the accuracy, efficiency, and cost-effectiveness of making these changes. Its utility clients have reported savings of 90 percent or greater in time and 70 percent or greater in cost with LineWorks when compared to more traditional and manually intensive methods.

The Pressure Pipe Inspection Company

4700 Dixie Road
Mississauga, ON L4W 2R1
Canada

Principal Contact: Mike Garaci
Phone: 905-624-1040, ext. 234
Fax: 905-624-4777
E-Mail: info@ppic.com
Web: www.ppic.com



The Pressure Pipe Inspection Company (PPIC) evaluates the condition of water transmission systems utilizing a suite of unique and patented techniques to pinpoint damaged sections of pipe. Water supply system operators use this information to make informed asset management decisions.

PPIC's Asset Management System (AMS) facilitates this decision-making process. The system provides operators with a visual representation of the existing current environment in and surrounding the pipeline. PPIC's AMS is unique in that it can store, track, and display data at the individual pipe level, enabling pipeline operators to base selective rehabilitation decisions on custom variable sets.

Provost & Pritchard Engineering Group, Inc.

286 West Cromwell Avenue
Fresno, CA 93711-6162

Principal Contact: Ronald Samuelian
Phone: 559-449-2700
Fax: 559-449-2715
E-Mail: rsamuelian@ppeng.com
Web: www.ppeng.com



The GIS Division of Provost & Pritchard Engineering Group, Inc. (P&P), has a great reputation built on quality products teamed with excellent customer service and support. The company offers a full range of GIS and cartographic products as well as ESRI-authorized training and software sales. Irrigation and water agencies in the San Joaquin Valley have relied on P&P for survey-grade GPS mapping of wells and district facilities, in-house GIS creation, facilities network analysis tools, ArcPad applications, and assistance in reporting and managing data. Take advantage of P&P's 25 years of experience in agriculture and water management and contact P&P today.

Quartic Solutions, LLC

1380 Garnet Avenue, Suite E-402
San Diego, CA 92109

Phone: 858-752-7221
Fax: 858-272-3491
Web: www.quarticsolutions.com



Quartic Solutions, LLC, is a GIS consulting firm that provides a full range of water and wastewater GIS services. Quartic Solutions has many years of experience supporting large and small water and wastewater agencies. Its staff members have built efficient water/wastewater GIS maintenance applications, interfaced with other enterprise systems such as work management and document management, and seamlessly supported field activities such as closed-circuit television inspections. Quartic Solutions has vast experience with migrating ESRI and non-ESRI GIS databases to the geodatabase model. Its services include GIS project management, database administration and design, data conversion and analysis, and application development. Quartic Solutions' goal is to develop solutions that provide a high return on investment for its customers.

RBF Consulting

14725 Alton Parkway
Irvine, CA 92618

Principal Contact: Steve Bein
Phone: 949-855-3642
Fax: 949-472-8373
E-Mail: sbein@rbf.com
Web: www.rbf.com



RBF Consulting provides a full range of GIS services for public and private clients throughout the western United States. The company's GIS expertise extends to all its service areas. In planning and urban design, it uses GIS to improve the quality and efficiency of general plan updates and provides environmental analysis and mapping supporting regional conservation plans. For water resource clients, it develops full GIS implementation plans and performs data automation supporting comprehensive master plans and modeling. From mapping facilities for public works to monitoring landslides for land development, GIS technology at RBF improves the quality and efficiency of services provided to its clients.

Red Oak Consulting

104 Corporate Park Drive
White Plains, NY 10602-0751

Principal Contact: Graham S. Hayes, Ph.D.

Phone: 716-667-6608

Fax: 716-667-0279

E-Mail: ghayes@pirnie.com

Web: www.redoakconsulting.com
www.pirnie.com



Resource Data, Inc.

1205 East International Airport Road, Suite 100
Anchorage, AK 99518

Phone: 907-563-8100

Fax: 907-561-0159

E-Mail: info@resdat.com

Web: www.resdat.com



RouteSmart Technologies, Inc.

8850 Stanford Boulevard, Suite 2600
Columbia, MD 21045

Principal Contact: Chris Walz

Phone: 800-977-7284

Fax: 410-290-0334

E-Mail: info@routesmart.com

Web: www.routesmart.com



Red Oak Consulting, a division of Malcolm Pirnie, Inc., is an award-winning environmental engineering firm, with more than 100 years of experience. The company's more than 1,500 staff members in offices nationwide provide its clients with the best solutions to their water/wastewater problems. Approximately 150 ESRI end users, power users, and developers skilled in engineering, environmental sciences, and application development apply their expertise in

- Water/Wastewater master planning, permitting, rate studies, and water resource and storm water management
- GIS needs assessment, implementation planning, design, and development as well as geodatabase UML modeling and data migration to support multiuser editing with versioned geodatabases
- ArcIMS and ArcGIS Server Web-based application development and project-based hosting
- ArcObjects and MapObjects application development for stand-alone and enterprise-wide GIS deployments to support ArcSDE in Oracle and SQL Server environments
- Custom development for GPS, ArcPad, and wireless access
- Integration with other software applications such as CMMS, CIS, CIP, hydraulic, hydrologic, and groundwater models

Resource Data, Inc. (RDI), is a GIS and software development company that employs more than 55 professionals. It specializes in customized database design and implementation, Internet system design and implementation, and GIS technology. Its clients represent almost every market including utilities; oil and mining industries; environmental organizations; and federal, state, and local governments.

RDI's expertise includes ArcSDE/geodatabase implementations for water and wastewater enterprises including integrating utility business/engineering applications with ESRI GIS tools. RDI has fully integrated GIS into water and wastewater utility business systems using ArcGIS/ArcIMS/ArcSDE/geodatabase and the following: work management with Maximo® software, customer information system with Indus Banner®, asset management with PeopleSoft®, project management with in-house tools, TV/video inspections, and assessment (water and sewer assessments) management system and property ownership with Oracle. In addition, full map production and maintenance tools have been created along with portable tools for field use.

RouteSmart Technologies, Inc., develops, markets, licenses, and supports RouteSmart for ArcGIS, a routing system for optimizing meter-reading operations for water utilities. As a software product, RouteSmart for ArcGIS balances cycle days and routes on variables such as time, fixed number of routes/cycles, or revenue; sequences meters in read-order; and enables what-if scenario modeling for evaluating different operational strategies. RouteSmart for ArcGIS is applied in both automatic/manual meter reading as well as traditional walk/drive meter-reading environments. RouteSmart Technologies provides a complete turnkey solution consisting of data, software, training, and subsequent follow-on consultative support to assist water utility clients in achieving maximum operational efficiency.

Sanborn

1935 Jamboree Drive, Suite 100
Colorado Springs, CO 80920

Principal Contact: Melinda Brown
Phone: 719-593-0093
Fax: 719-264-5598
E-Mail: mcbrown@sanborn.com
Web: www.sanborn.com



With a rich tradition of mapping dating back to 1866, Sanborn offers a full range of spatial solutions to GIS and photogrammetric mapping customers. Sanborn is a full-service, knowledgeable, technology-driven company that stays on top of the many changes and challenges facing the mapping industry. The company's product and service offerings include consulting and off-the-shelf products; analog, digital, and lidar data acquisition; photogrammetric mapping; remote sensing solutions; and data conversion to federal, state, and local governments as well as commercial companies. With technology centers across the United States, Sanborn is nationally recognized. Sanborn offers total geographic solutions.

The Schneider Corporation

8901 Otis Avenue
Indianapolis, IN 46216

Phone: 317-826-7393
866-973-7100, ext. 7393
Fax: 317-826-7200
E-Mail: aharrison@schneidercorp.com
Web: www.schneidercorp.com



The Schneider Corporation is a geospatial consulting firm based in Indianapolis, Indiana. With more than 250 employees, the company has been providing the highest-quality and most trusted surveying and engineering services to its clients since 1962. The company's GIS expertise has been built on a 19-year history of helping local governments and private utilities and companies implement GIS solutions for managing their infrastructure.

From GPS mapping of infrastructure locations in the field to providing custom Web sites to deliver complete GIS information, Schneider Corporation's offerings run the gamut of GIS implementation processes. The company's specialty lies in delivering solutions to leverage the investment of building a GIS. This includes implementing end user solutions such as the Cityworks work order management and GASB 34 reporting systems or V.Locate™, a Web-based call-before-you-dig product to quickly identify assets in the field that fall in predefined zones of interest.

Siemens Program and System Engineering S.R.L.

Bd. Mihail Kogălniceanu,
nr. 21, bl. C6, RO-500090
Str. Colina Universității, nr. 1, C16
Brașov RO-500090
Romania

Principal Contact: Aura Podoreanu
Phone: 40-268-409139
Fax: 40-268-409103
E-Mail: aura.podoreanu@siemens.com
Web: www.pse.siemens.ro

Siemens Program and System Engineering S.R.L. is a member of the PSE Group, a hierarchical independent research and development entity in the Siemens Group. Siemens offers complete services and solutions in the area of information technologies, communications, energy, and automation. Its strengths include excellent familiarity with the respective branch of industry and a lot of experience with customers' business processes, combined with in-depth know-how in all areas of technology important for state-of-the-art solutions. Siemens Program and System Engineering S.R.L. takes advantage of the entire experience of more than 6,000 staff members from all over the world and of its 40 years of existence.

SIEMENS PSE

Spacient Technologies, Inc.

445 South Figueroa Street, Suite 2600
Los Angeles, CA 90071

Principal Contact: Kosta C. Mallakis
Phone: 213-804-7478
Fax: 213-559-9100
E-Mail: kosta@spacient.com
Web: www.spacient.com



Spacient Technologies, Inc., is a leading provider of enterprise field service management and mobile GIS mapping solutions for government and utilities. Through a focus on mobile mapping and field automation, Spacient delivers an innovative suite of ESRI ArcGIS software-based applications and professional services that enable government and utility organizations to improve asset maintenance and customer management; enhance security; increase field service efficiency; and comply with health, safety, and environmental regulations.

FieldPort® Enterprise Software Suite

FieldPort is a leading ESRI-based enterprise mobile GIS mapping and field computing solution for integrated field service and asset maintenance operations.

A one-of-a-kind solution built on ESRI ArcGIS technology, FieldPort delivers a device- and platform-independent Web-based software application that integrates GIS mapping and GPS with customer and asset data in a single, simple, and user-friendly interface. FieldPort solutions are available for a wide variety of mobile device platforms and wireless data services. The FieldPort modular software suite can be implemented as a stand-alone solution or can be used to extend and integrate information from ESRI's ArcGIS systems and industry-leading back-office asset and customer management systems for managing, measuring, and optimizing field service operations.

Spatial Data Integrations, Inc.

710 West Main Street, Suite 108
Louisville, KY 40202

Phone: 502-568-2591
Fax: 502-568-2363
E-Mail: tlyon@sdimaps.com
Web: www.sdimaps.com



Spatial Data Integrations, Inc. (SDI), is a full-service ISO 9001:2000-compliant GIS firm capable of providing a wide variety of GIS services including data conversion, technical support, and training; GPS equipment; and custom applications. Located on historic Main Street in Louisville, Kentucky, SDI has specialized in providing high-quality digital mapping and GIS services to government, utility, and private sector businesses since 1994.

SDI has developed easy-to-use solutions that are specifically designed for the water and wastewater industry. Its products are built on ESRI software and require no prior knowledge of mapping, GIS theory, or database administration and little computer experience. Using SDI's water and wastewater solutions, utilities of all sizes can enjoy the benefits of a geographic information system.

SPL WorldGroup, Inc.

525 Market Street, 33rd Floor
San Francisco, CA 94105

Principal Contact: Cathy McCause
Phone: 800-ASK-4SPL
Fax: 415-963-5601
E-Mail: splinfo@splwg.com
Web: www.splwg.com



SPL WorldGroup, Inc., delivers the proven enterprise asset and work management and mobile workforce management solutions with integrated ESRI GIS capabilities that help water and wastewater utilities and service companies achieve a competitive advantage and excellence in business performance. Specifically designed for water and energy service companies, SPL solutions provide a platform from which clients serve residential, commercial, and industrial customers in regulated and competitive markets. Financially strong and with customers on six continents, SPL focuses on clients' return on investment and fosters long-term relationships based on confidence and trust.

Summit Envirosolutions, Inc.

1217 Bandana Boulevard North
Saint Paul, MN 55108

Principal Contact: Mark E. Packard
Phone: 651-644-8080
Fax: 651-647-0888
E-Mail: mpackard@summite.com
Web: www.summite.com



Summit Envirosolutions, Inc., has developed technologies in conjunction with NASA that can create “smart” well fields, with which public and private water suppliers can comply with wellhead protection and sole source aquifer requirements while actually decreasing their operating costs. Moreover, it has integrated this technology into petroleum refining and distribution, mining, paper production, landfills, transportation, brownfields, SuperFund sites, and other applications in which environmental compliance and operation issues involve soil, groundwater, surface water, noise, or air quality.

Tadpole Technology Group

2231 Faraday Avenue, Suite 140
Carlsbad, CA 92008

Principal Contact: Carrie Turner
Phone: 760-929-8345, ext. 111
Fax: 760-692-0484
E-Mail: carrie.turner@us.tadpole.com
Web: www.tadpoletechnology.com/gsd



The Geospatial Solutions Division of Tadpole Technology Group provides enterprise infrastructure software solutions to support the management, replication, and distribution of geographic data within and between organizations.

- GO! Sync™ (ArcPad)
Automate and streamline the synchronization of GIS data between ArcSDE and ArcPad.
- GO! Sync (Mapbook)
ArcGIS map viewer provides simple-to-use tools designed specifically for the field.
- GO! Sync (Redline)
Create and manage field sketches the smart way.
- GO! Sync (View)
Broadcast GIS data to occasionally connected users by distributing incremental update packets containing only changes.
- GO! Sync (Edit)
Synchronize ArcGIS data between spatial database engines and personal geodatabases.

Tauw Group BV

P.O. Box 479
Deventer 7400 AL
The Netherlands

Principal Contact: Fred M. van der Weijde
Phone: 31-570-699486
Fax: 31-570-699666
E-Mail: fmw@tauw.com
Web: www.tauw.com



Tauw Group BV is an independent, international consulting and engineering company specialized in the design, improvement, and management of the built environment, natural environment, and infrastructure. Tauw has 22 offices in the Netherlands, Germany, Belgium, France, Spain, and Italy.

Tauw civil consultants and engineers are specialized in soil, air, sound, safety, site development, road construction, hydraulic engineering, urban water management, sewerage, spatial planning, water treatment, and auditing. These 1,200 specialists are working on projects commissioned by authorities and companies. Approximately 150 staff members are experienced GIS users for analysis and reporting. The Tauw mission is “creating sustainable solutions for a better environment.”

VELOCITIE Integration, Inc.

1620 South Ashland Avenue, Suite 106
Green Bay, WI 54304

Additional Locations:
N19 W24400 Riverwood Drive, Suite 250
Waukesha, WI 53188

7200 South Alton Way, Suite A-270
Centennial, CO 80112

Principal Contact: Bart D. Koenig
Phone: 920-432-1820
E-Mail: info@velocitie.com
Web: www.velocitie.com



VUEWorks, Inc.

10 Ferry Street, Suite 137
Concord, NH 03301

Phone: 603-228-8100
Fax: 603-375-5830
E-Mail: info@vueworks.com
Web: www.vueworks.com



Wade Trim

25251 Northline Road
Taylor, MI 48180

Principal Contact: Scott Hurley
Phone: 734-947-9700
Fax: 734-947-9726
E-Mail: shurley@wadetrim.com
Web: www.wadetrim.com



VELOCITIE Integration, Inc., provides integrated GIS solutions including GIS; job design; mobile dispatch; and work, outage, and asset maintenance management for water and wastewater utilities. VELOCITIE's GIS specialists provide technical expertise, services, and support for implementing or migrating to ESRI-based technologies. VELOCITIE assists clients with enterprise GIS solutions using ESRI's ArcGIS suite of products and integrating value-added business partner solutions from Azteca Systems, Tadpole Technology Group, Miner & Miner, and Laurel Hill GIS.

VELOCITIE's seasoned industry veterans have participated in all aspects of GIS-related consulting from needs analysis to system development, integration, and implementation. Clients range from the city of Ann Arbor, Michigan, with its small-scale public works projects, to some of the largest and most technologically advanced water and wastewater utilities such as the Boston Water and Sewer Commission.

VELOCITIE has integrated a variety of business systems to ESRI's ArcGIS technology, making its clients more profitable and allowing them to provide a higher level of customer service.

VUEWorks™ AM is a Web-enabled asset management software solution integrated with ESRI's ArcIMS that works directly with GIS data to help local governments and utilities optimize service delivery, minimize risk, and control costs. VUEWorks' solution is composed of modules for sanitary sewer, storm drain, and water asset management as well as powerful capital improvement planning, GASB 34, and work order modules for a complete asset management solution. VUEWorks AM provides a comprehensive set of tools to enable users to search based on name, address, or asset; attach multiple electronic documents to an asset; create service calls; link service calls to work orders; produce monthly activity reports; and much more. Advanced asset management tools are provided to capture system condition and performance for evaluating risk across an entire collection or distribution system that is completely user configurable for prioritized decision-making support.

Wade Trim has 11 offices in Michigan, Ohio, Pennsylvania, and Florida. The company is consistently ranked in the top 200 design and environmental firms and continues to be recognized for innovative solutions. It has more than 14 years of experience in the design, development, and application of GIS. It maintains state-of-the-art GIS computing facilities in several offices and applies its expertise and resources to a variety of complex municipal projects. Its experienced GIS analysts, planners, technicians, database designers, and GPS surveyors provide expertise and resources to address a variety of challenging water and wastewater projects. Wade Trim delivers proven, high-quality GIS products and works with clients to integrate GIS into everyday tasks.

Wallingford Software, Inc.

6015 Harris Parkway, Suite 120
Fort Worth, TX 76132

Principal Contact: Saša Tomic
Phone: 718-793-2424
Fax: 718-793-4242
E-Mail: STomic@WallingfordSoftware.com
Web: www.wallingfordsoftware.com



Wallingford Software, Inc., is dedicated to the development and support of market-leading software tools for the water industry worldwide. The company's products include data management and hydraulic modeling software to support planning and operations in water distribution, sewerage provision, river management, and coastal engineering.

Wallingford Software hydraulic platform, InfoWorks, integrates hydraulic modeling of sewer collection (sanitary, storm, and combined sewers linked with the surface runoff modeling), water distribution network modeling (integrated with leakage assessment, sedimentation, and criticality assessment), and river modeling. At the same time, the hydraulic modeling platform is fully integrated with asset condition management and real-time operational software.

Wendel Duchscherer

140 John James Audubon Parkway, Suite 201
Buffalo, NY 14228

Phone: 716-688-0766
Fax: 716-625-6825
E-Mail: ociolko@wd-ae.com
Web: www.wd-ae.com



Wendel Duchscherer, with offices in Buffalo and Albany, New York, and Washington, D.C., is at the forefront of advancement in water, wastewater, and storm water system management. The company delivers solutions with an understanding of the difficulties facing today's utilities including efficient use of limited resources and financial management of capital expenditures. The company provides conventional and innovative treatment expertise to help guide its clients through the increasing complexity of EPA and other regulatory requirements. No matter the particular project goal, the company ultimately assists its clients in enhancing their day-to-day operations.

The experience of the award-winning Wendel Duchscherer wastewater team promotes the development of progressive, cost-effective design solutions for both water and wastewater treatment and residual treatment processes. With an emphasis on asset management, Wendel Duchscherer combines comprehensive water modeling and custom GIS applications to provide cost-effective analysis and management of water treatment and distribution systems. The company utilizes multiple water modeling software packages while integrating them with ESRI GIS software to manage overwhelming amounts of data to meet individual client needs. The company does so with attention to quality of life issues, efficient use of limited resources, and financial management.

Wendel Duchscherer assists storm water managers and local governments in rural and urban settings with storm water drainage system management, storm water quality, and permitting, helping its clients operate in accordance with federal and state flooding and pollution regulations.

As specialists in the management of water, wastewater, and storm water systems, certified energy managers are part of its core team to deliver cost-effective, energy-efficient design and treatment solutions. Further, Wendel Duchscherer also pursues grant monies that are available to help fund the implementation of recommended energy-efficient measures. The company's mix of specialized knowledge, talent, experience, and leading-edge technology ensures a seamless transition through design, implementation, operation, and maintenance.

Westin Engineering, Inc.

1150 International Drive, Suite 200
Rancho Cordova, CA 95670

Phone: 916-852-2111
Fax: 916-852-2311
E-Mail: info@we-inc.com
Web: www.we-inc.com



Westin Engineering, Inc., helps leverage investments in GIS technology to streamline business processes, improve productivity, enhance service delivery, and integrate GIS with other business-critical systems. The company's businesscentric approach results in

- A technology vision that supports business objectives
- Integrated systems that support business processes and workflows
- Full realization of technology investments

The company's senior consulting team brings in-depth experience with planning, design, development, and implementation of ArcGIS, ArcIMS, and ArcSDE. Westin consultants also understand water and wastewater operations, asset and maintenance management, customer service, and associated industry best practices. This unique combination of skills and experience helps Westin apply a practical perspective to help clients develop solutions—not just systems.

WilsonMiller

3200 Bailey Lane, Suite 200
Naples, FL 34105

Additional Location:
1101 Channelside Drive, Suite 400N
Tampa, FL 33602

Principal Contact: Adam Carnow
Phone: 813-223-9500
Fax: 813-223-0009
E-Mail: adamcarnow@wilsonmiller.com
Web: wilsonmiller.com



WilsonMiller is a long-established Florida firm that offers a single source of high-level, diverse services (including planning, engineering, landscape architecture, ecological, surveying, GIS, and transportation/construction engineering and inspection) for land development, infrastructure, transportation, and resource management projects. Its staff serves both public and private clients throughout the southeastern United States, the Caribbean, and Latin America from 10 offices spanning from Naples to Destin. Since 1999, WilsonMiller has ranked among the top three firms in *Engineering News-Record's* general building multiunit residential market category.

Woolpert LLP

409 East Monument Avenue
Dayton, OH 45402-1261

Phone: 937-461-5660
Fax: 937-461-0743
E-Mail: shane.imwalle@woolpert.com
Web: www.woolpert.com



Woolpert LLP is a world leader in infrastructure GIS and information technology services. One of the largest U.S. providers of data development and photogrammetric services, Woolpert specializes in professional services for water, wastewater, and storm water programs. The Woolpert consulting team provides GIS planning, design, and development services to support GIS integration with many types of systems. Integrated systems include modeling, computerized maintenance management, imaging/document management, and legacy databases. Full-service capabilities range from aerial photography, lidar, digital orthophotography, GPS surveying, wireless field-based data gathering, and data conversion to water and facilities management.



For more than 35 years, ESRI has been helping people manage and analyze geographic information. ESRI offers a framework for implementing GIS technology in any organization with a seamless link from personal GIS on the desktop to enterprise-wide GIS client/server and data management systems. ESRI GIS solutions are flexible and can be customized to meet the needs of our users. ESRI is a full-service GIS company, ready to help you begin, grow, and build success with GIS.

Corporate

ESRI
380 New York Street
Redlands, California
92373-8100, USA
Telephone: 909-793-2853
Fax: 909-793-5953

For more information
on ESRI, call

1-800-447-9778

(1-800-GIS-XPRT)

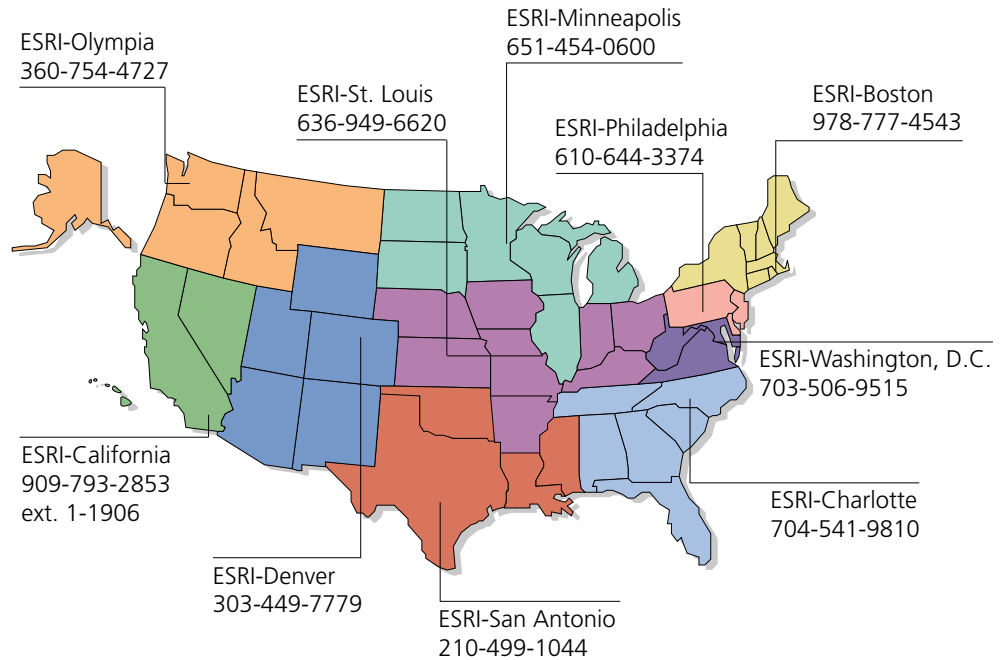
or contact an ESRI value-added
reseller near you.

Send e-mail inquiries to
info@esri.com

Visit ESRI's Web page at
www.esri.com

Outside the United States,
contact your local ESRI distributor.
For the number of your distributor,
call ESRI at 909-793-2853,
ext. 1-1235,
or visit our Web site at
www.esri.com/international

Regional Offices



International Offices

Australia
www.esriaustralia.com.au

Finland
www.esri-finland.com

Italy
www.esriitalia.it

Romania
www.esriro.ro

Belgium/Luxembourg
www.esribelux.com

France
www.esrifrance.fr

Japan
www.esrij.com

Singapore
www.esrisa.com

Bulgaria
www.esribulgaria.com

Germany/Switzerland
www.esri-germany.de
www.esri-suisse.ch

Korea
www.esrikr.co.kr

Spain
www.esri-es.com

Canada
www.esricanada.com

Hungary
www.esrihu.hu

Netherlands
www.esrinl.com

Sweden
www.esri-sweden.com

China (Beijing)
www.esrichina-bj.cn

India
www.esriindia.com

Poland
www.esripolska.com.pl

Thailand
www.esri-th.com/indochina

China (Hong Kong)
www.esrichina-hk.com

Indonesia/Malaysia
62-21-527-1023
603-7874-9930

Portugal
www.esri-portugal.pt

United Kingdom
www.esriuk.com

Venezuela
www.esriven.com



Place ESRI business partner or distributor address here.

Copyright © 2006 ESRI. All rights reserved. ESRI, the ESRI globe logo, ArcGIS, ArcSDE, ArcIMS, ArcEditor, ArcWeb, ArcPad, MapObjects, ArcObjects, ArcInfo, 3D Analyst, ArcView, ArcMap, @esri.com, and www.esri.com are trademarks, registered trademarks, or service marks of ESRI in the United States, the European Community, or certain other jurisdictions. Other companies and products mentioned herein are trademarks or registered trademarks of their respective trademark owners.



No. GS-35F-5086H