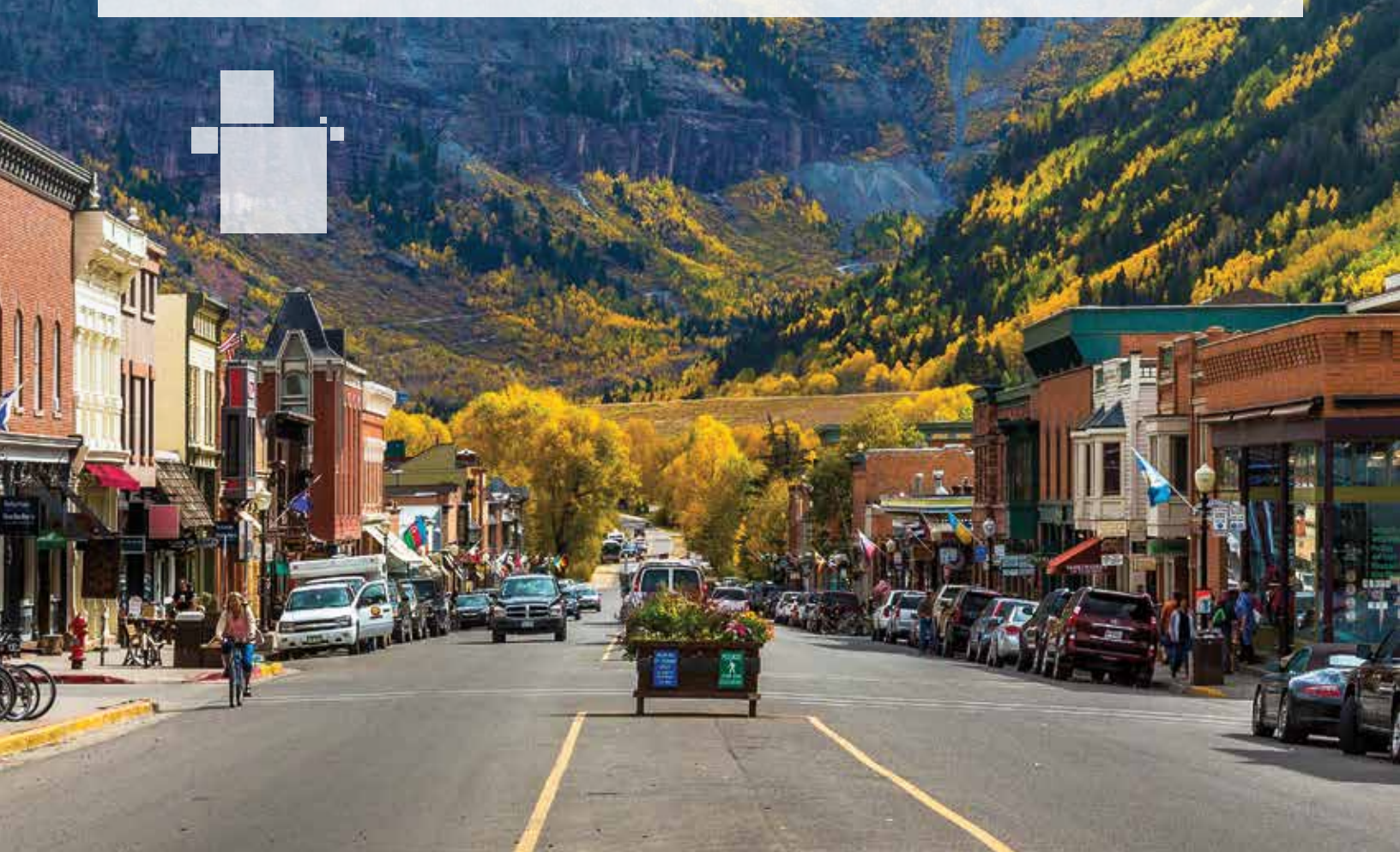




THE FAST TRACK TO BUILDING SMART COMMUNITIES

**BENEFITING FROM THE SMALL MUNICIPAL AND COUNTY
GOVERNMENT ENTERPRISE AGREEMENT**



GIS: A Foundation for Building Smart Communities

A Better Way to Build a GIS Strategy

Governments clearly understand the benefits of implementing a geographic information system (GIS) for use across multiple disciplines. However, developing an implementation strategy that fits everyone's schedule, software requirements, and training needs can be time-consuming and take considerable coordination and budgeting. A method to streamline the adoption of GIS would ensure that staff get the technology and support when they need it most.

Breaking Down Barriers

Esri has created the program needed by every organization looking to benefit from making data, training, and tools available across multiple departments: the Small Municipal and County Government Enterprise Agreement (SMCGEA). This program is tailored to governments serving **populations of up to 250,000 people** and is perfect for governments looking for a more agile and streamlined GIS procurement process. The only thing needed to move forward is the vision to implement the best solutions for your organization. The time has never been better to look at Esri.



Cambridge is using GIS for several environmental projects. In this example a LiDAR dataset was used to create an urban tree canopy and several urban factors used to assign values for expanding the number of trees to be planted.

The city created a 3D model to be able to better visualize development in areas of rapid growth. 3D gives planners and the public a different perspective on the changing urban environment.

City of Cambridge, MA
Population approximately: 107,200



The Possibilities Are Endless

Core Software, and COTS Solutions

Today's government agencies are called on to develop smart communities and to be organizations that are open, accountable, innovative, and responsive. Esri's ArcGIS® solutions make all of that possible and more. Hundreds of governments look to the Small Municipal and County Government Enterprise Agreement program to get GIS technology that supports their thriving organizations. Ready-to-use application templates make it easy to create maps for citizens' use—in days, not months. Executive dashboards give elected officials a clear view into operations and progress toward goals. An enterprise agreement (EA) provides all the GIS resources governments require to rapidly accomplish goals and develop smart communities.



The SMCGEA program includes the following:

Choose from 200+ complimentary applications that help improve government services and enhance citizen engagement.

1

Core Software

Get access to the technology that will serve as the foundation for your organization's GIS strategy. Manage data, run complex analyses, and share your findings in **ArcGIS for Desktop** and **ArcGIS Pro**. Give everyone in your organization access to the maps and tools they need with **ArcGIS for Server**. Model your community in 3D to create a realistic context for proposed scenarios or projects with **Esri CityEngine**®. These fundamental tools and more will give your organization the foundation for smarter, more data-driven decision making.

2

ArcGIS for Local Government Solutions

Jump-start your smart community with the complimentary **ArcGIS for Local Government** solutions. From posting election results to mapping parks and from reporting code violations to delivering public notifications, this set of more than 200 customizable templates helps you serve the needs of your entire organization.

3

Web GIS

Included in the program is access to Esri's collaborative, cloud-based system, **ArcGIS Online**. This platform provides a place to manage maps, apps, data, and other types of geographic information and easily share that work with colleagues. With access to the following free applications that run on ArcGIS Online, the benefits of an EA keep getting better and better.

- With **ArcGIS Open Data**, you can share data, reports, and information products across departments, with the public, and with stakeholders.
- **Collector for ArcGIS** allows data collection and management in the field, with or without an Internet connection.
- Leveraging **Esri Story Map** apps increases public awareness and information sharing.
- **Survey123 for ArcGIS** turns simple forms into powerful crowdsourcing surveys for data gathering.

Esri Provides Ongoing Support

In addition to core ArcGIS software, EAs include partnership opportunities, developer support, and dedicated technical assistance. Organizations with EAs have access to the following:

Training

Take advantage of in-person instructor-led training and free Esri Virtual Campus classes as well as discounts on additional training. Esri specialists can partner with organizations to determine the best options to equip staff with the knowledge and skills they need. Organizations also receive complimentary registration for the Esri User Conference, where staff can attend technical training sessions and industry-focused presentations.

Esri Developer Network

To support in-house development of applications and prototypes, EA holders get a subscription to the Esri Developer Network (EDNSM). This service provides advanced technical support, training, and resources including access to new developer tools and invitations to try out beta releases. EDN subscribers also receive complimentary passes to the Esri Developer Summit and extensive technical support for developers.

ArcGIS for Developers

Developers have access to APIs, software developer kits (SDK), ready-to-use content, and self-hosted solutions that add location information to apps. Offerings include direction and routing services, geocoding, spatial analysis, and GeoEnrichmentSM.

With an enterprise agreement, you can

- Deploy unlimited core Esri products on demand.
- Lower costs for ArcGIS software and maintenance.
- Reduce GIS administrative and procurement costs.
- Improve operational efficiency with the pervasive use of GIS.
- Always be sure you have the latest release and updates of core software.



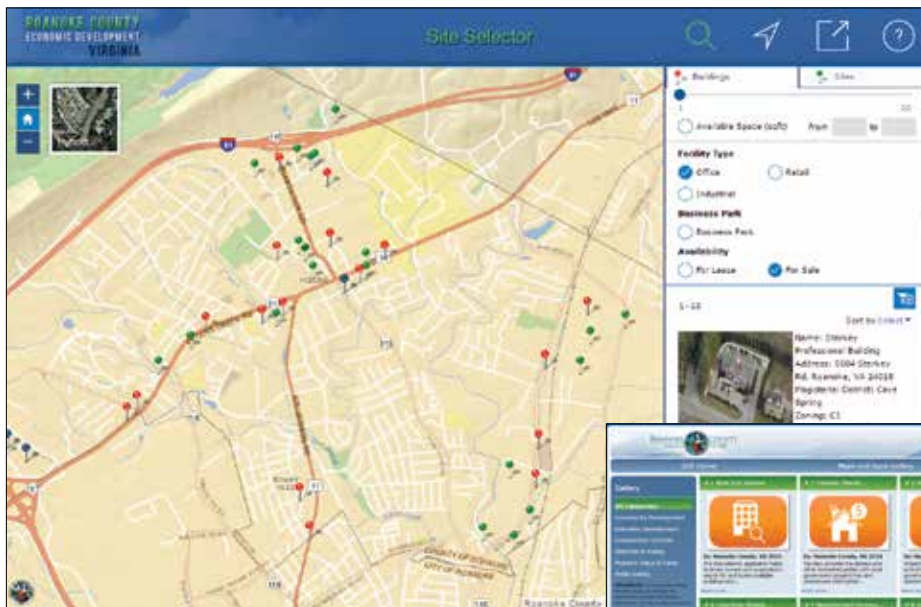
The Latest Technology Is Affordable

Don't Let Budget Constraints Stand in the Way of Using the Latest GIS Technology

It's important to have all the resources and tools your organization needs—these make it easier to get work done and provide better service. GIS helps enable your organization, build strong analysis, improve field mobility, create tools for executive oversight, and provide for citizen engagement. Putting issues in a geographic context fosters greater understanding, helps staff work more efficiently, promotes citizen engagement, and ensures data-driven decision making.

"The Esri EA for small agencies lets us move forward in a financially viable manner to bring GIS and its incredible tools to our employees. We are seeing immediate process and customer service delivery improvements through the use of GIS in our public works, utilities, and planning departments."

Steven Rogers
Town Manager
Town of Yountville, California
Population approximately 2,933



Roanoke County's GIS gallery features applications for citizens and business users. Their site selector application provides prospective businesses the opportunity to search for office space and available warehouses in the area.

Roanoke County, VA
Population approximately 93,500



Does Your Government Qualify?

“It is very convenient to be able to provide information requested by a potential business on the spot than having to follow up with the information later. Our executive dashboard mobile app built on Esri technology provides situational awareness of all incidents for both fire and police departments.”

John Gillison
City Manager
City of Rancho Cucamonga, California
Population approximately 174,305

All local governments in the United States with no more than 250,000 residents are eligible.

Who can join the Small Municipal and County Government Enterprise Agreement program?

- Counties
- Villages
- Townships
- Cities
- Parishes
- Boroughs

The Small Municipal and County Government Enterprise Agreement program has a pricing structure based on population. The levels are as follows:

Program Level One—For populations up to 25,000

Program Level Two—For populations between 25,001 and 50,000

Program Level Three—For populations between 50,001 and 100,000

Program Level Four—For populations between 100,001 and 125,000

Program Level Five—For populations between 125,001 and 150,000

Program Level Six—For populations between 150,001 and 250,000

You are ready for an EA when your organization

- Plans to expand GIS into new departments and application areas.
- Has integrated GIS into critical business systems that require coordination across departments.
- Is transitioning its IT strategy and requires architectural flexibility.
- Wants to implement ArcGIS for Local Government solutions.
- Needs to manage cyclical expenditures with predictable software costs.
- Is experiencing increased GIS software use.

Get Started Today

Get the Software You Need at a Price That Keeps Small Government Budgets in Mind

Use the Esri Small Municipal and County Government EA to

- Embed interactive maps into your website.
- Extend citizen engagement apps.
- Improve field mobility.
- Operate in real time.
- Plan with real-world scenarios.
- Make data-driven decisions.
- Create an open data portal for collaboration.
- Location-enable your business systems.

The Right Resources, Sized for Your Population

Esri recognizes that governments of all sizes face the same challenges in delivering services and meeting the expectations of their constituents. Small governments just have especially limited resources. The SMCGEA was created to help satisfy the need for GIS to support your work within a program that can match your goals and resources. The SMCGEA program is tailored to governments serving populations up to 250,000 people and provides unlimited access to core Esri® GIS software, together with training and support to help build smarter communities, today.

go.esri.com/smallgovEA





Understanding our world.

Esri inspires and enables people to positively impact their future through a deeper, geographic understanding of the changing world around them.

Governments, industry leaders, academics, and nongovernmental organizations trust us to connect them with the analytic knowledge they need to make the critical decisions that shape the planet. For more than 40 years, Esri has cultivated collaborative relationships with partners who share our commitment to solving earth's most pressing challenges with geographic expertise and rational resolve. Today, we believe that geography is at the heart of a more resilient and sustainable future. Creating responsible products and solutions drives our passion for improving quality of life everywhere.



Contact Esri

380 New York Street
Redlands, California 92373-8100 USA

1 800 447 9778
T 909 793 2853
F 909 793 5953
info@esri.com
esri.com

Offices worldwide
esri.com/locations

Copyright © 2016 Esri. All rights reserved. Esri, the Esri globe logo, ArcGIS, EDN, GeoEnrichment, @esri.com, and esri.com are trademarks, service marks, or registered marks of Esri in the United States, the European Community, or certain other jurisdictions. Other companies and products or services mentioned herein may be trademarks, service marks, or registered marks of their respective mark owners. CityEngine is a registered trademark of Procedural AG and is distributed under license by Esri.