

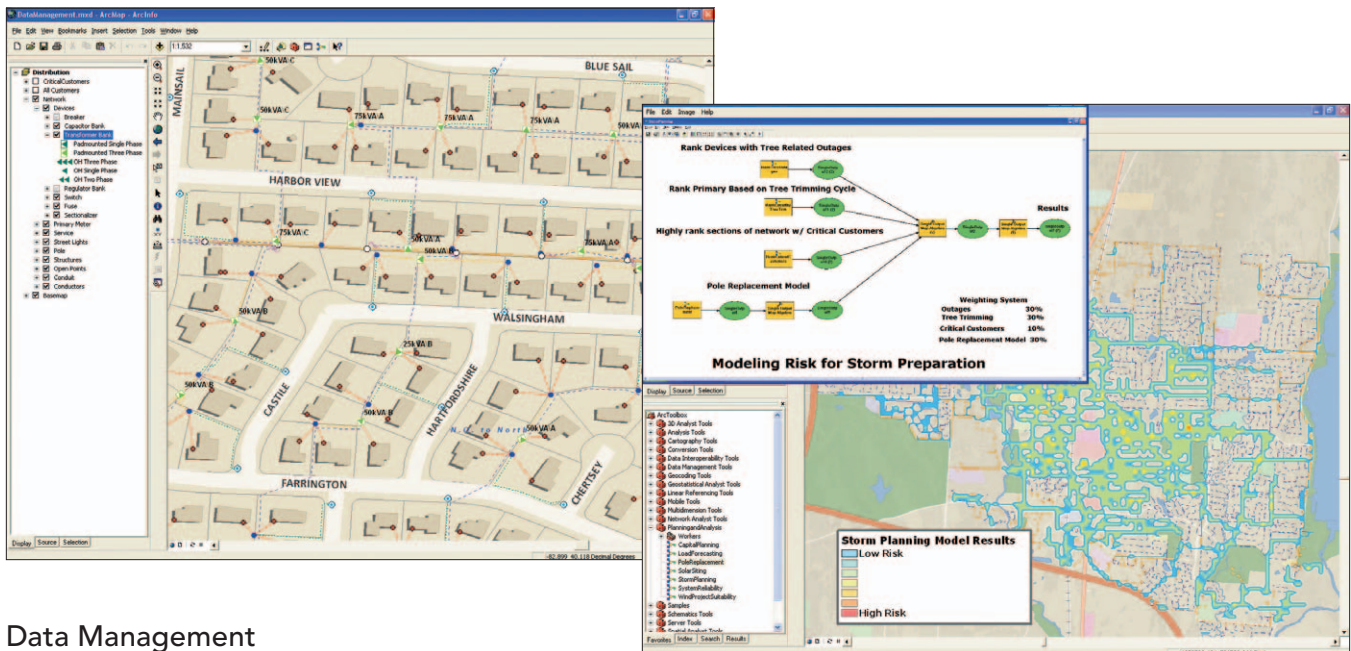
# GIS for Electric Distribution



# The Geographic Approach™ to Electric Distribution

A geographic information system (GIS) integrates hardware, software, and data for capturing, managing, analyzing, and displaying all forms of geographically referenced information. The geographic approach, through ESRI® GIS technology, allows us to view, query, and understand data in many ways. We see relationships, patterns, and trends in the form of GIS-based maps, globes, reports, and charts. GIS helps you answer questions and solve problems. When viewed in the context of geography, your data is quickly understood and easily shared. GIS technology can be integrated into any enterprise information system framework.

## Empowering Utilities with GIS



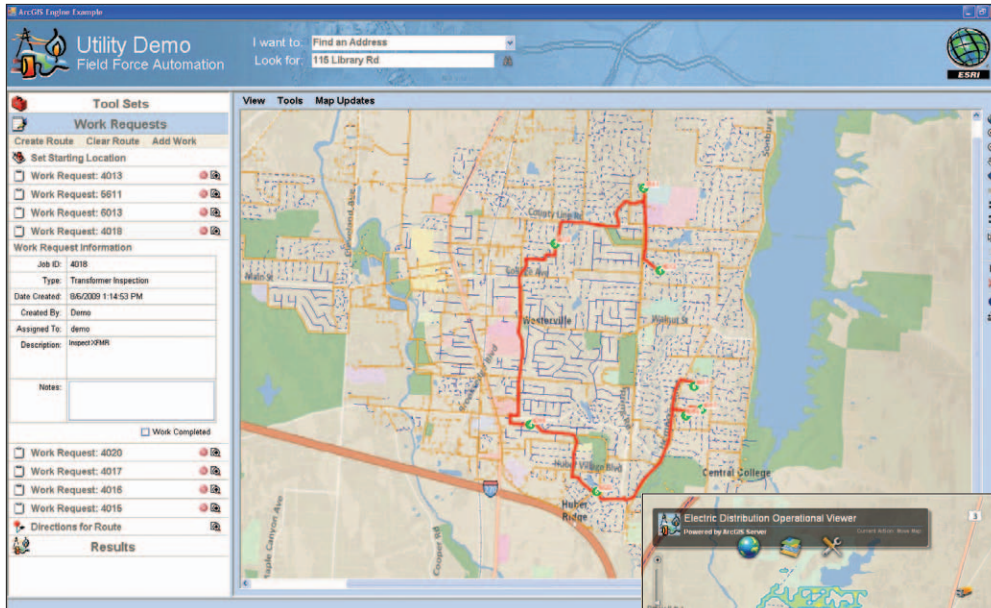
### Data Management

Utilities worldwide use GIS to manage and map the location of millions of miles of overhead and underground circuits. Within GIS, your utility's assets can be linked directly to your customer information system, allowing you to proactively monitor work orders, vegetation management, and outages.

### Planning and Analysis

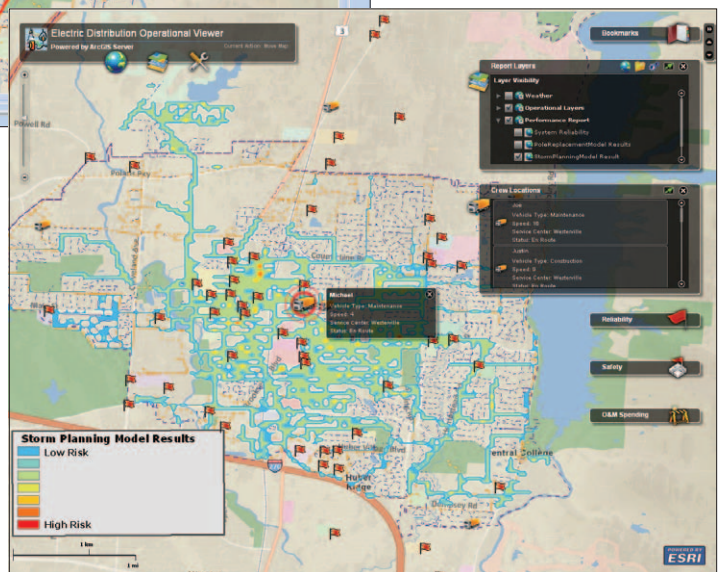
GIS enables distribution utilities to identify vulnerabilities that cause outages, to weigh asset investments, and to understand customer satisfaction. With a rich set of easy-to-use spatial analysis tools, GIS helps you determine the right location for new facilities and new technology such as smart grid sensors and smart meters.

Learn more. Read case studies, explore options,



## Workforce Automation

Workforce automation systems allow you to more efficiently schedule and dispatch utility service staff. Your productivity will be even greater with a workforce automation system built with GIS technology. GIS shows you where crews are working and gives you the status of their work. In addition, street-level routing allows you to reduce fleet costs and gain additional scheduling time, giving you the ability to handle more service calls.



## Situational Awareness

Through GIS-based graphic outputs and Web-based reporting, you can quickly demonstrate how your organization is meeting compliance requirements, responding to large outages, or seeing where you are spending your money wisely. Meeting regulatory requirements and keeping the public informed becomes less time consuming and easier to accomplish when you use GIS to communicate with regulators and the public.

and connect with an expert at [www.esri.com/electric](http://www.esri.com/electric).



## About Esri

Since 1969, Esri has been helping organizations map and model our world. Esri's GIS software tools and methodologies enable these organizations to effectively analyze and manage their geographic information and make better decisions. They are supported by our experienced and knowledgeable staff and extensive network of business partners and international distributors.

A full-service GIS company, Esri supports the implementation of GIS technology on desktops, servers, online services, and mobile devices. These GIS solutions are flexible, customizable, and easy to use.

## Our Focus

Esri software is used by hundreds of thousands of organizations that apply GIS to solve problems and make our world a better place to live. We pay close attention to our users to ensure they have the best tools possible to accomplish their missions. A comprehensive suite of training options offered worldwide helps our users fully leverage their GIS applications.

Esri is a socially conscious business, actively supporting organizations involved in education, conservation, sustainable development, and humanitarian affairs.

## Contact Esri

1-800-GIS-XPRT (1-800-447-9778)

Phone: 909-793-2853

Fax: 909-793-5953

info@esri.com

[esri.com](http://esri.com)

Offices worldwide

[esri.com/locations](http://esri.com/locations)



380 New York Street  
Redlands, CA 92373-8100 USA