



**Military Overlay Editor**  
*A Symbology Creation Tool for Military Applications*



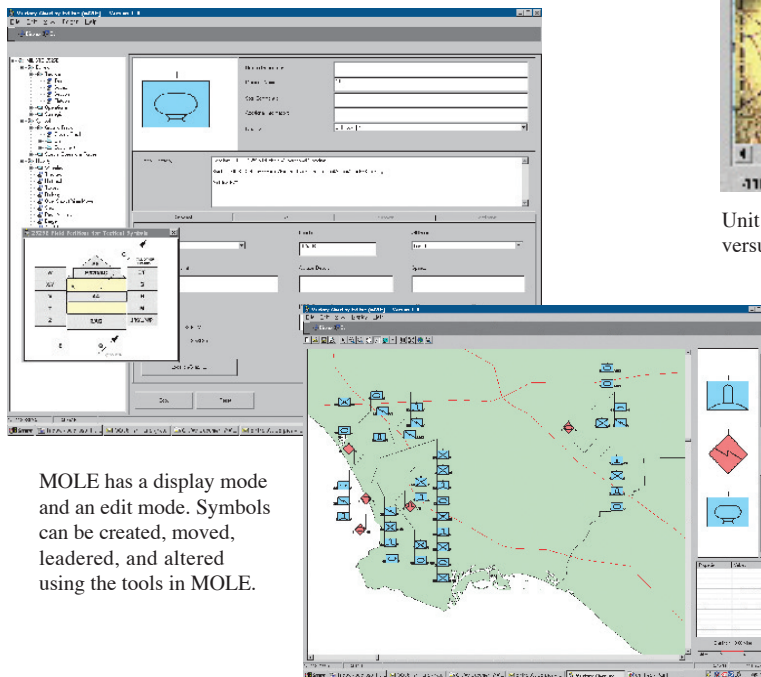
## Military Overlay Editor

A Symbology Creation Tool for Military Applications

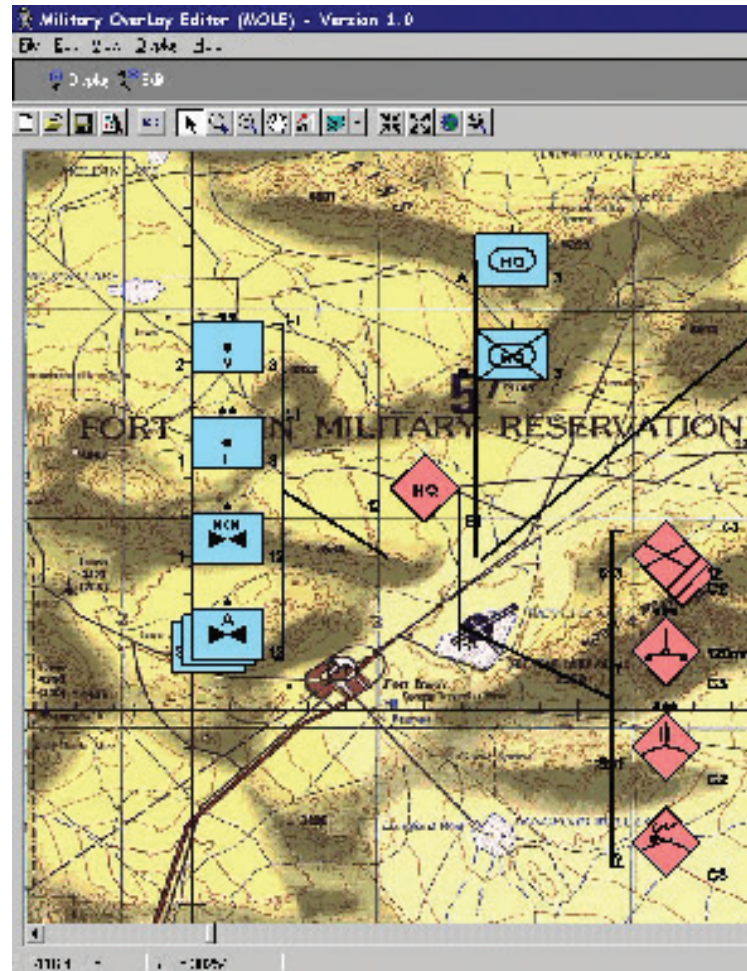
Military Overlay Editor (MOLE™) is a symbol generator and editor for modern battlefield planning applications. Designed as an easy-to-use tool for symbology creation for today's complex military operations, MOLE reads the MIL-STD 2525B 15-character message string, along with all the other unit descriptors specified in the standard.

### With MOLE you can

- Add geographic data in vector, raster, or other supported formats for reference while composing and positioning unit symbols.
- Manually or automatically leader many symbols that occur at the same location.
- Stack symbols of identical units that occur at the same location.
- Print draft copies of your map to any standard Windows® output device.
- Use MOLE-generated graphics in UNIX® or Windows-based ArcView® software as well as in the ArcMap™ application in ArcInfo™ 8.



MOLE has a display mode and an edit mode. Symbols can be created, moved, leaded, and altered using the tools in MOLE.



Unit symbols are automatically leaded, and like-units at the same location are stacked versus friendly units. Background map data can be in a variety of formats including m

### To use MOLE you need

- Pentium® CPU
- 16 MB RAM
- 6 MB disk space
- ArcView GIS 3.1 or greater
- for importing graphics (recommended)





For more than 30 years ESRI has been helping people manage and analyze geographic information. ESRI offers a framework for implementing GIS in any organization with a seamless link from personal GIS on the desktop to enterprisewide GIS client/server and data management systems. ESRI GIS solutions are flexible and can be customized to meet the needs of our users. ESRI is a full-service GIS company, ready to help you begin, grow, and build success with GIS.

## Corporate

ESRI  
380 New York Street  
Redlands, California  
92373-8100, USA  
Telephone: 909-793-2853  
Fax: 909-793-5953

For more information  
call ESRI at

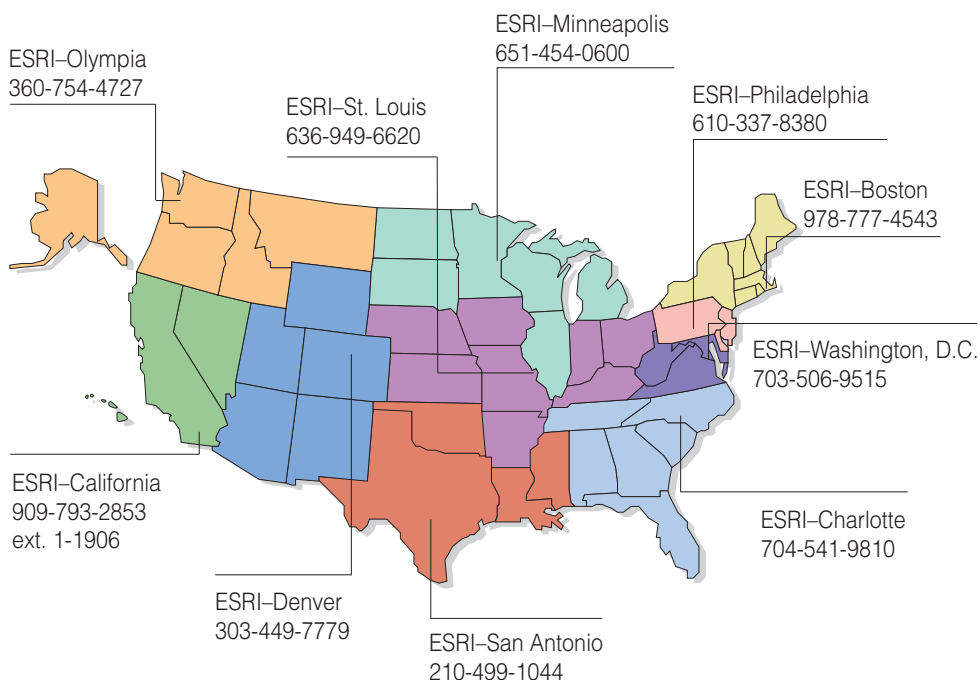
**1-800-447-9778**

(1-800-GIS-XPRT)

Send e-mail inquiries to  
**info@esri.com**

Visit ESRI's Web page at  
**www.esri.com**

## Regional Offices



## International Offices

Outside the United States,  
contact your local ESRI distributor.  
For the number of your distributor,  
call ESRI at 909-793-2853,  
ext. 1-1235,  
or visit our Web site at  
**www.esri.com/international**

Australia 61-89-242-1005	Hong Kong 852-2730-6883	Korea 82-2-571-3161	Spain 34-91-559-4375
Belgium/Luxembourg 32-2-460-7480	Hungary 361-428-8040	Netherlands 31-10-217-0700	Sweden 46-23-755-400
Canada 416-441-6035	India 91-11-620-3802	Poland 48-22-825-9836	Thailand 66-2-678-0707
France 33-1-46-23-6060	Indonesia/Malaysia 62-21-570-7685 603-7874-9930	Romania 40-1-231-13-81	United Kingdom 44-1296-745-500
Germany and Switzerland 49-8166-677-0 41-1-360-2460	Italy 3906-406-96-1	Singapore 65-742-8622	Venezuela 58-2-285-1134

Copyright © 2001 ESRI. All rights reserved. ESRI, ArcView, and the ESRI globe logo are trademarks of ESRI, registered in the United States and certain other countries; registration is pending in the European Community. MOLE, the MOLE logo, ArcInfo, and ArcMap are trademarks and @esri.com and www.esri.com are service marks of ESRI. Other companies and products mentioned herein are trademarks or registered trademarks of their respective trademark owners.



No. GS-35F-5086H

Place ESRI business partner or distributor address here.