

# ArcGIS® for Maritime: Charting More than Navigational Charts

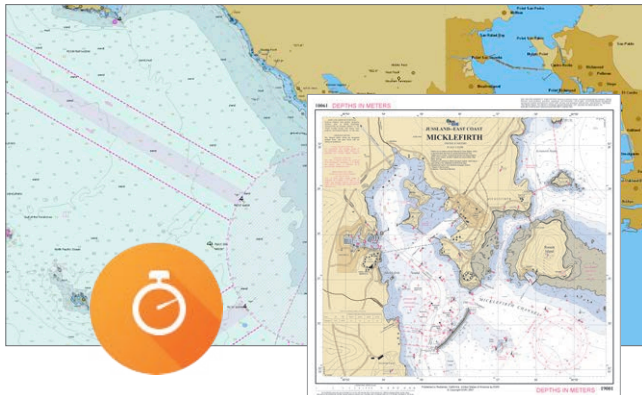
Navigational charts are just the beginning. Your charts contain rich data with uses beyond navigation. Share all or parts of your authoritative data so that others can repurpose it on maps, websites, and even mobile devices.

## Empower Others with Maritime Data

Powerful features enable you to share spatial data to drive wide-ranging uses, from coastal management to real-time emergency planning.

## Make and Maintain Traditional Charts in Record Time

Through automation, Electronic Navigation Charts (ENCs) can be generated dynamically from a geodatabase with just a couple of mouse clicks, and paper charts are ready for finishing in minutes.



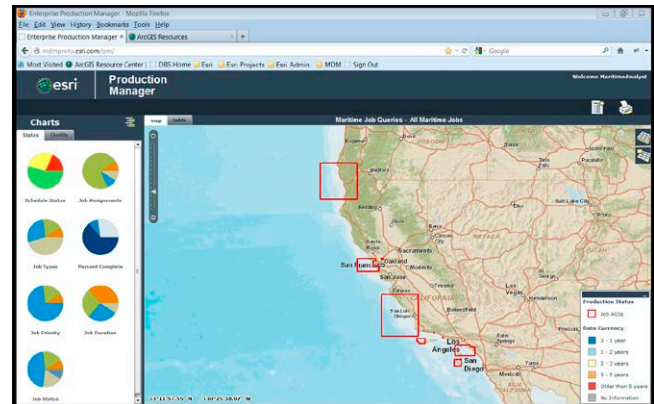
## Maintain Quality Control

Automated checks and integration with third-party tools ensure compliance with International Hydrographic Organization (IHO) S-58 standards as well as those specific to a range of maritime products.

For more information, visit [esri.com/maritimecharting](http://esri.com/maritimecharting) or e-mail us at [maritime@esri.com](mailto:maritime@esri.com).

## Use Repeatable Workflows

Capture your production know-how, manage assignments more closely, improve productivity, and show progress via dashboards.



## Extend Your Team

Support simultaneous in-house and off-site production with the ability to share data and work on disconnected replicas.

## Save Money

Reduce risk and save money by automating time-consuming tasks with consistent and traceable workflows.

