

ArcGIS Server Geoportal Extension

User Reference List

Organizations worldwide have successfully implemented the Geoportal Extension.

GEOSS: Group on Earth Observations geoss.esri.com

The ESRI GEOSS GEO Portal provides scientists with easy access to a wealth of earth observation data and Web mapping services. When new resources become available, users can be alerted by subscribing to a GeorSS news feed. The ESRI GEOSS GEO Portal is built using ArcGIS® Server 9.3 and GIS Portal Toolkit 9.3.



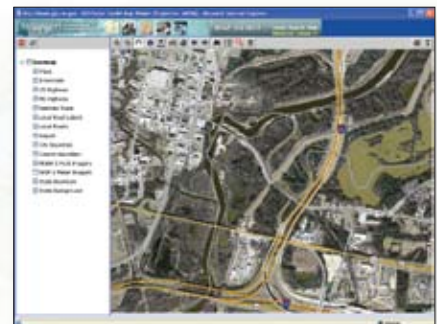
Geospatial One-Stop www.geodata.gov

The Geospatial One-Stop (GOS) portal provides one-stop ability to search for geospatial data from local, state, and federal sources; Web mapping services; data collection activities; and geospatial best practices and standards. The portal is open and interoperable and incorporates industry-approved standards.



Mississippi Geospatial Clearinghouse www.gis.ms.gov/Portal

The Mississippi Geospatial Clearinghouse (MGC) provides comprehensive access to GIS resources for Mississippi for use by government, academia, and the private sector and reduces the duplication of GIS efforts across the state. The portal also provides a central place to store and implement the Mississippi Digital Earth Model, which establishes a state digital land base that includes seven core data layers and will provide the basis for a uniform GIS in each county.



GeoStor: Arkansas' Official GeoData Clearinghouse www.geostor.arkansas.gov/portal

GeoStor is an enterprise-wide data distribution and Web application portal for the State of Arkansas. It enables local, state, and federal agencies to store and publish GIS data and services. This enhances collaboration between agencies and provides integration with the private sector. GeoStor's shared service architecture is a cost-saving approach, eliminating the need for duplicate hardware, software, and data collection.



GeoNorge

www.geonorge.no/Portal

GeoNorge is an agency collaboration headed by the Norwegian Mapping Agency to provide Web-based map and geographic services on the Internet. It involves cooperation of public agencies that have geographic responsibilities or are large users of geographic information. Publication is open to data providers for both public and private users.



Columbia Gas Transmission

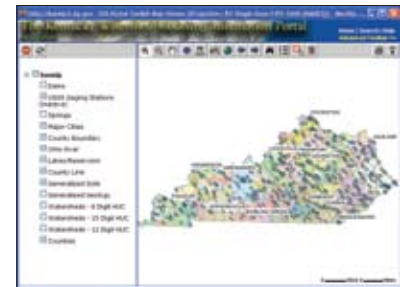
In 2007, ESRI provided training and implementation services on the ESRI® GIS Portal Toolkit to Columbia Gas Transmission. The goal was to provide Columbia Gas Transmission with knowledge transfer to its staff so that the company could effectively take ownership of the GIS Portal Toolkit software to independently develop, operate, and maintain a corporate, internal GIS portal. Columbia Gas Transmission has now developed and is hosting an internal business GIS portal to support its distributed offices, which require a single point of access to internal and external GIS data and services.



Kentucky Watershed Modeling Information Portal

www.kwmip2.ky.gov/portal

The Kentucky Watershed Modeling Information Portal (KWMIP) is an OGC-compliant portal to support watershed modeling within the commonwealth. It provides a one-stop spot for all entities performing watershed modeling over the geography of Kentucky. KWMIP significantly leverages spatial data and tools already available or under construction in Kentucky as well as other Kentucky governmental data portals. The portal makes it easier and faster to find and model watershed data in the commonwealth and provides users with a greater range of GIS data and resources.



Visit the following organizations' Web sites for additional examples of Geoportal extension implementations:

Poland IKAR GeoPortal—ikar.pgi.gov.pl/Portal/

NOAA's National Climatic Data Center (NCDC)—gis.ncdc.noaa.gov/Portal

Abu Dhabi Environmental Portal—geoportal.ead.ae/Portal/

GRID Africa GeoPortal—gridnairobi.unep.org/Portal/

Netherlands Nature Information Portal—wot.natuurgegevens.nl/Portal/

New York State Geodata Inventory—www.dec.ny.gov/geodata/

Nova Scotia, Canada, GeoNOVA Portal—www.gov.ns.ca/geonova/



To learn more about the ArcGIS Server Geoportal Extension, visit
www.esri.com/geoportal or e-mail portal@esri.com.

ESRI 380 New York Street
Redlands, California 92373-8100 USA
Tel.: 800-447-9778 • E-mail: info@esri.com