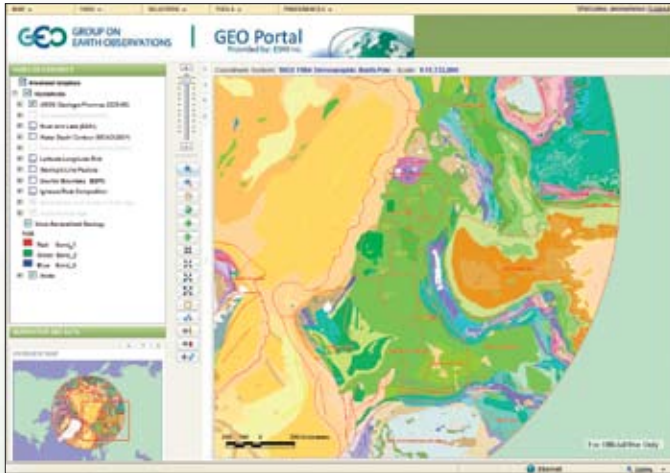


# ArcGIS® Server Geoportal Extension

Help your organization manage, share, and discover geospatial resources.



The Global Earth Observation System of Systems (GEOSS) geoportal links global remote-sensing systems into a loosely coupled network. The GEOSS geoportal offers a single Internet access point for data, imagery, and analytic software packages relevant to all parts of the globe.

The ArcGIS® Server Geoportal extension (formerly GIS Portal Toolkit) allows you to catalog the locations and descriptions of your organization's geospatial resources in a central repository called a geoportal, which you can publish to the Internet or your intranet. Visitors to the geoportal can search and access these resources to use with their projects. If you grant them permission, visitors can also register geospatial resources with the geoportal.

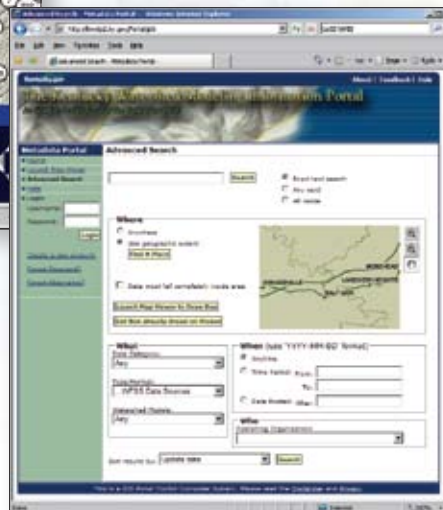
Geoportals give you an enterprise-level view of your geospatial resources regardless of their type or location. Resources are registered with a geoportal using metadata, which describes the location, age, quality, and other characteristics of the resources. Therefore, you can ensure that everyone in your organization is using the best resources available.

With the Geoportal extension, you can

- Improve the efficiency and effectiveness of geospatial activities within your enterprise and across organizations.
- Support collaboration and cooperation among departments and organizations by facilitating the sharing of geospatial resources regardless of the GIS platform.
- Gain an enterprise-level awareness of disparate geospatial data, Web services, and activities.
- Leverage existing geospatial resources so your organization doesn't duplicate those resources or the effort to create them.
- Ensure the use of approved, high-quality datasets.
- Reduce the time users spend trying to find relevant, usable geospatial resources.



The Kentucky Watershed Modeling Information Portal was developed to improve the reliability of the water resource data provisioning process and increase the use of watershed modeling by water resource managers across the state of Kentucky.



## Key Features of the Geoportals Extension

The Geoportals extension is a fully supported extension to ArcGIS Server that helps you organize and publish the locations of geospatial datasets, map services, applications, and other Web resources. It gives your users the ability to discover and access those resources.

The Geoportals extension

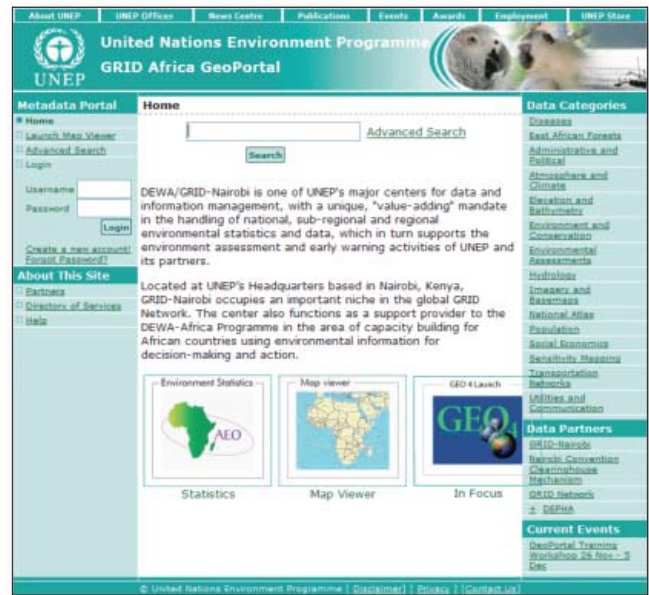
- Supports international data and technology standards
- Catalogs existing GIS resources regardless of location or type
- Facilitates discovery of GIS resources with the geoportals site starter
- Integrates with ArcGIS Desktop and ArcGIS Explorer
- Harvests content from other geoportals and catalogs
- Supports REST, GeoRSS, KML, and HTML to expose content from the catalog service to external clients
- Integrates with third-party content management systems, portal frameworks, and authentication systems

## New in the Geoportals Extension at 9.3.1

Here are some features of the ArcGIS Server Geoportals extension at 9.3.1:

- A lightweight, in-line previewer built on the ArcGIS API for JavaScript™ to view services without loading a browser plug-in or launching a desktop application
- A simplified service registry to register services, including ArcGIS Server services, KML, or GeoRSS, simply by cutting and pasting their URLs into the geoportals
- Enhanced OpenSearch and OGC CSW SOAP bindings that integrate the geoportals into enterprise systems

To learn more about the ArcGIS Server Geoportals extension, visit [www.esri.com/geoportals](http://www.esri.com/geoportals) or e-mail [portal@esri.com](mailto:portal@esri.com).



*Global Research Information Database (GRID)-Nairobi is part of a global network of cooperating centers that facilitates access to environmental data in support of the United Nations Environment Programme (UNEP) Early Warning Assessment Programme.*



*Columbia Gas Transmission, a NiSource Company, developed and hosts an internal business GIS portal to support its distributed offices, which require single-point access to internal and external GIS data and services.*



**ESRI** 380 New York Street  
Redlands, California 92373-8100 USA  
Tel.: 800-447-9778 • E-mail: [info@esri.com](mailto:info@esri.com)