

Esri Community Analyst

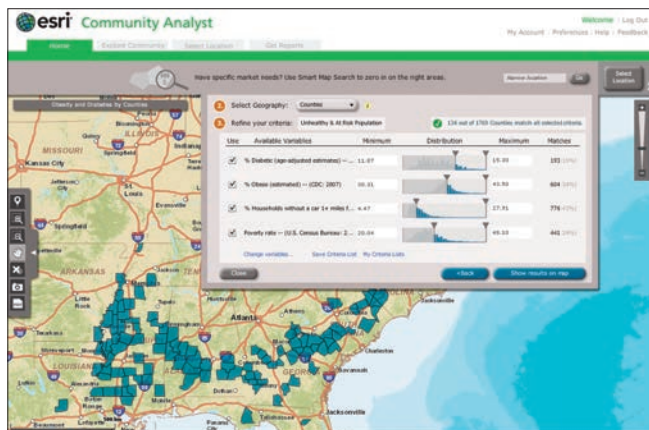
Better Communities Through Geography

Why Community Analyst?

Community Analyst is a decision-making tool for policy makers, government agencies, and civic organizations that want to make better decisions about projects and issues that affect their communities. Through online data and mapping tools, users can quickly discover patterns, relationships, and trends and analyze the unique characteristics that make up their communities.

Access, Measure, and Compile

Community Analyst provides access to interactive maps and data about demographics, the economy, supply and demand, health, education, and more. The data can be analyzed in a geographic context as granular as congressional districts, block groups, census tracts, or ZIP Codes.

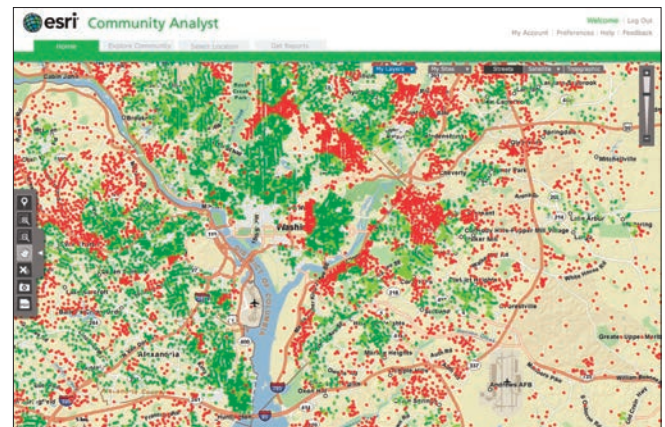


Highlighted counties show high concentrations of obesity and diabetes and limited access to grocery stores among individuals living below the poverty line.

Search, Analyze, and Share

Find areas that match multiple search criteria by setting up five customized parameters from thousands of available variables, such as income and age groups. Then analyze what impact these parameters might have, for example, on funding new projects or canceling existing ones.

Share your results through interactive maps, tabular data, Excel® spreadsheets, charts, or PDF files that can be easily understood by others.



Supermarkets are one of the most popular and convenient ways to gain access to healthy food. Shown in green are census blocks that are within a one-mile walking distance to a supermarket. Census blocks with greater than a one-mile walk are shown in red.



Visit esri.com/communityanalyst to learn more.