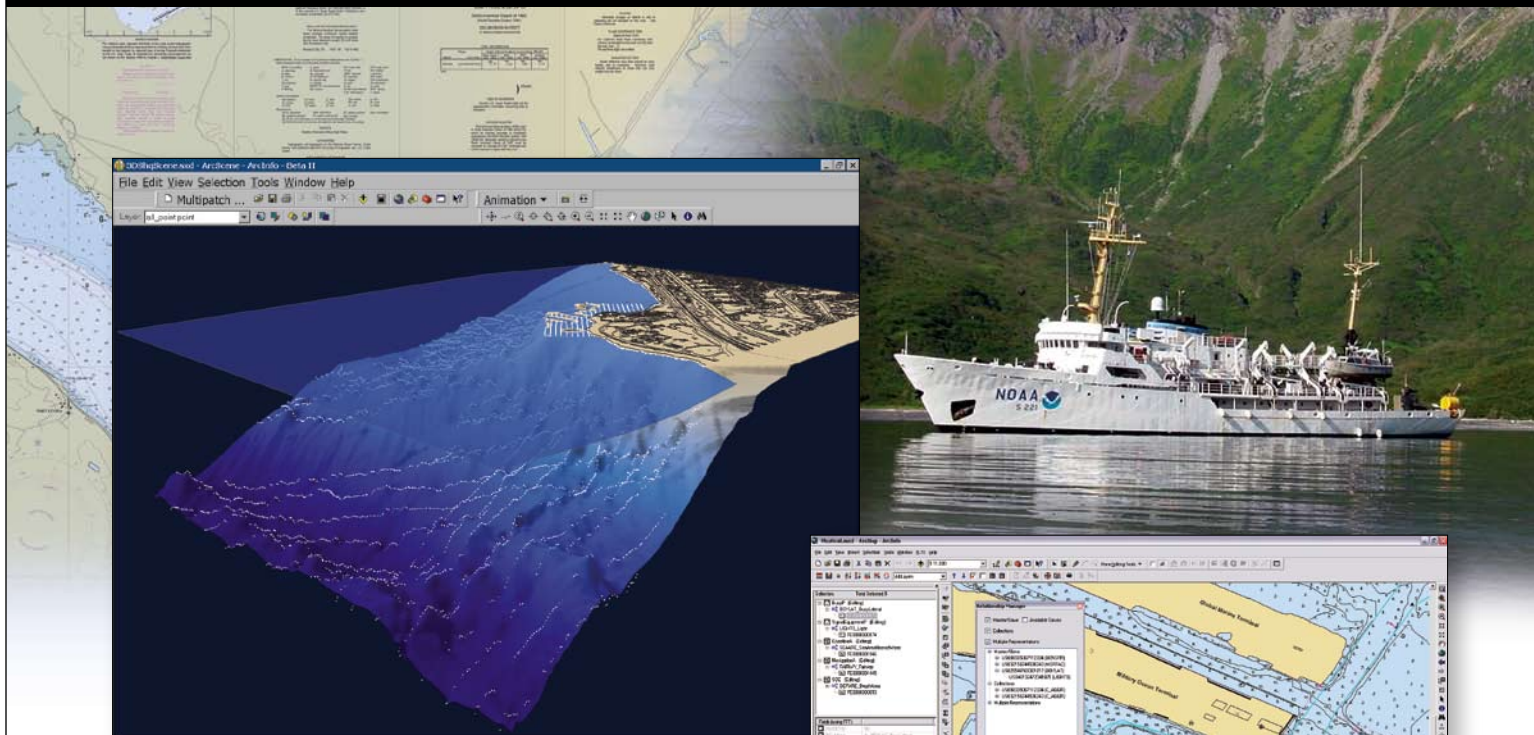


GIS—Modernizing Hydrographic Information Workflow



ESRI GIS integrates many sources and types of data including 3D bathymetric data for accurate visualization and analysis.

Update Data Once, Create Many Products in Real Time

Hydrographic offices, naval commands, and mapping and charting agencies worldwide turn to ESRI® geographic information system (GIS) technology for their data and charting needs. ESRI GIS solutions give these agencies the ability to maintain, control, and disseminate their data to meet specific requirements.

While not the only solution for hydrographic charting, ESRI's database-driven GIS approach provides specialized toolsets for data management, editing, spatial analysis, and publishing nautical data. ESRI GIS software includes ArcGIS® and Production Line Tool Set (PLTS™) for ArcGIS. It enables hydrographic and nautical data products to be created from a common seamless database, significantly reducing data latency, redundancy, and errors. Turn to ESRI GIS to bring the geographic advantage to your agency's workflow.

ESRI GIS gives nautical users many database and map series tools to create products including Electronic Navigational Charts (ENC).

Advantages of ESRI GIS Solutions for Hydrographic Organizations

- ▶ Create and maintain quality hydrographic data in a nautical information system.
- ▶ Real time database-driven production
- ▶ Produce multiple products from a seamless database.

To read detailed case studies online, visit
www.esri.com/nautical.



ESRI—The GIS Company™

info@esri.com

1-800-447-9778

www.esri.com



ESRI

380 New York Street
Redlands, California
92373-8100 USA

Phone: 909-793-2853
Fax: 909-793-5953
E-mail: info@esri.com

For more than 35 years, ESRI has been helping people make better decisions through management and analysis of geographic information. A full-service GIS company, ESRI offers a framework for implementing GIS technology and business logic in any organization from personal GIS on the desktop to enterprise-wide GIS servers (including the Web) and mobile devices. ESRI GIS solutions are flexible and can be customized to meet the needs of our users.

For More Information

1-800-GIS-XPRT (1-800-447-9778)

www.esri.com

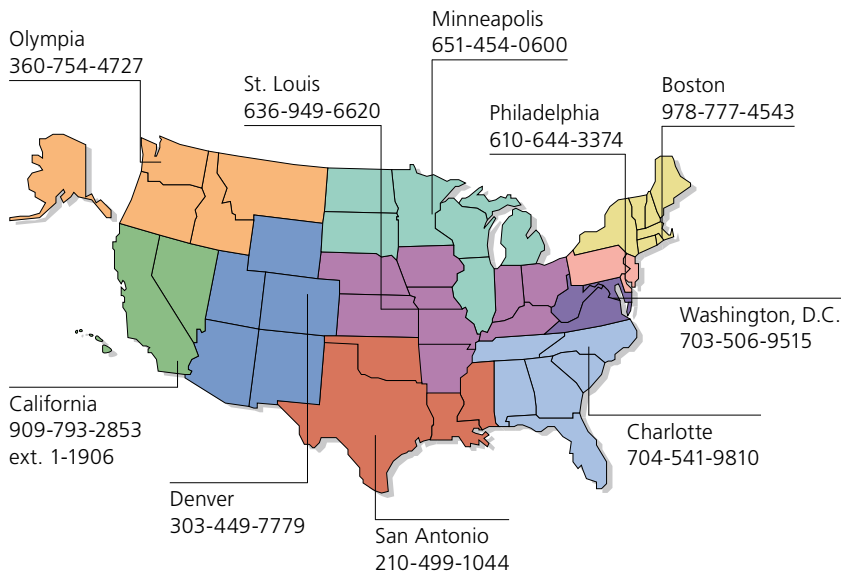
Locate an ESRI value-added reseller near you at

www.esri.com/resellers

Outside the United States, contact your local ESRI distributor. For the number of your distributor, call ESRI at 909-793-2853, ext. 1-1235, or visit our Web site at

www.esri.com/distributors

ESRI Regional Offices



ESRI International Offices

Australia
www.esriaustralia.com.au

Belgium/Luxembourg
www.esribelux.com

Bulgaria
www.esribulgaria.com

Canada
www.esricanada.com

Chile
www.esri-chile.com

China (Beijing)
www.esrichina-bj.cn

China (Hong Kong)
www.esrichina-hk.com

Finland
www.esri-finland.com

France
www.esrifrance.fr

Germany
www.esri-germany.de

Hungary
www.esrihu.hu

India
www.esriindia.com

Indonesia
www.esrisa.com.my

Italy
www.esriitalia.it

Japan
www.esrij.com

Korea
www.esrikr.co.kr

Malaysia
www.esrisa.com.my

Netherlands
www.esrinl.com

Northeast Africa
202-516-7485

Poland
www.esripolska.com.pl

Portugal
www.esri-portugal.pt

Romania
www.esriro.ro

Singapore
www.esrisa.com

Spain
www.esri-es.com

Sweden
www.esri-sweden.com

Switzerland
www.esri-suisse.ch

Thailand
www.esrith.com

United Kingdom
www.esriuk.com

Venezuela
www.esriven.com