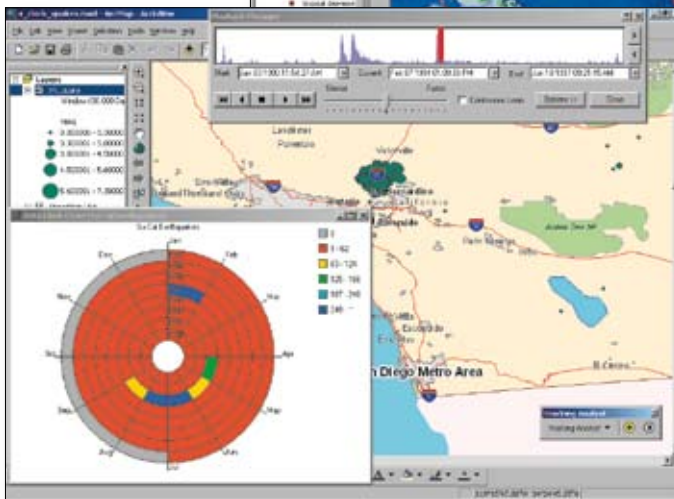
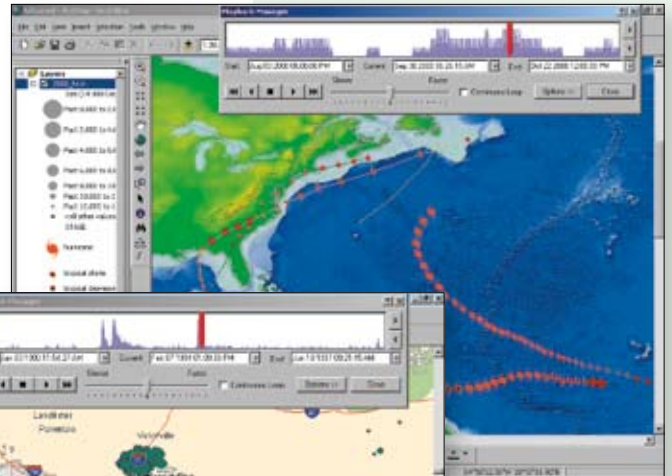


Tracking Server

Real-Time Temporal Solutions for GIS

Tracking Server is an ESRI® solutions product for collecting and sending real-time data from many data sources and formats to Web and desktop clients. It was developed to enable the integration of real-time data and geographic information system (GIS) technology. This integration helps users make better decisions and share information quickly, easily, and efficiently.



With Tracking Server, you can

- Track vehicles (e.g., police cars, delivery trucks).
- Track natural resources (e.g., variable stream flow).
- Perform military tracking.
- Track network flows for electricity and gas.
- Look at traffic flows.

Tracking Server allows you to view real-time data from any computer with access to the appropriate network—either intranet or Internet. It also supports historical playback, allowing you to perform analysis on your data.

Tracking Server is an ESRI solutions product. It is an enterprise-level technology that is integrated with ESRI's other server and services products.

For more information on Tracking Server, visit www.esri.com/trackingserver.



ESRI

380 New York Street
Redlands, California
92373-8100, USA

For more information,
call ESRI at

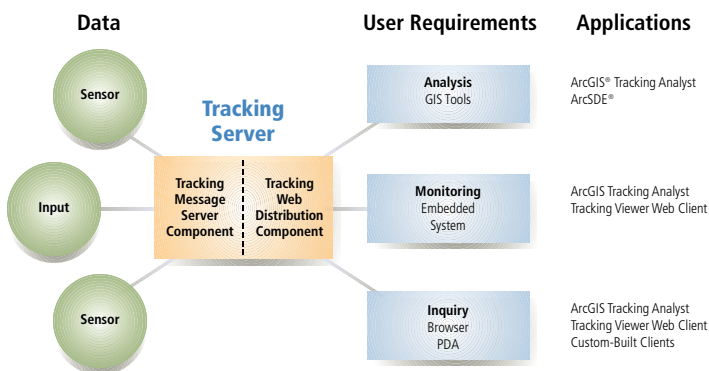
1-800-447-9778

Send e-mail inquiries to

info@esri.com

Visit ESRI's Web page at

www.esri.com



How data is received by Tracking Server and transmitted to client applications