

What's New in ArcGIS® 9.3.1

Deploy Modern Web Maps to Your Entire Organization

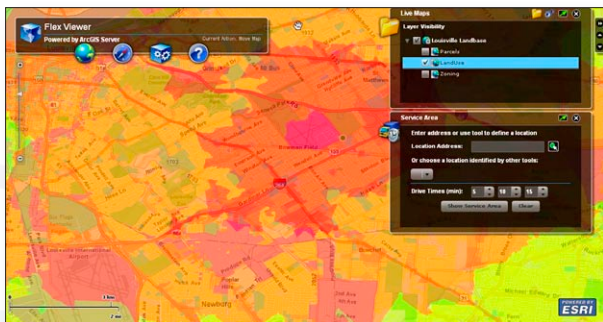


Create Fast, Intuitive Web Maps

- Optimize your ArcGIS® Server map services so they outperform equivalent ArcIMS® services.
- Create better-looking maps with sharper edges to features, clearer labels, and better color transparency.
- Reduce the time required to create map caches.

Tune Your Maps on ArcGIS Desktop so They Render Faster

- With a single click, ArcGIS analyzes your map and produces recommendations for tuning.
- Publish your optimized maps directly from the ArcGIS Desktop ArcMap™ application to ArcGIS Server.



ArcGIS 9.3.1 helps you create applications that meet today's high expectations for Web mapping.

Easy to Install

- No need to uninstall ArcGIS 9.3
- 100 percent compatible with ArcGIS 9.3 geodata and maps

Use APIs to Make Appealing Maps That Are Quick to Create and Simple to Use

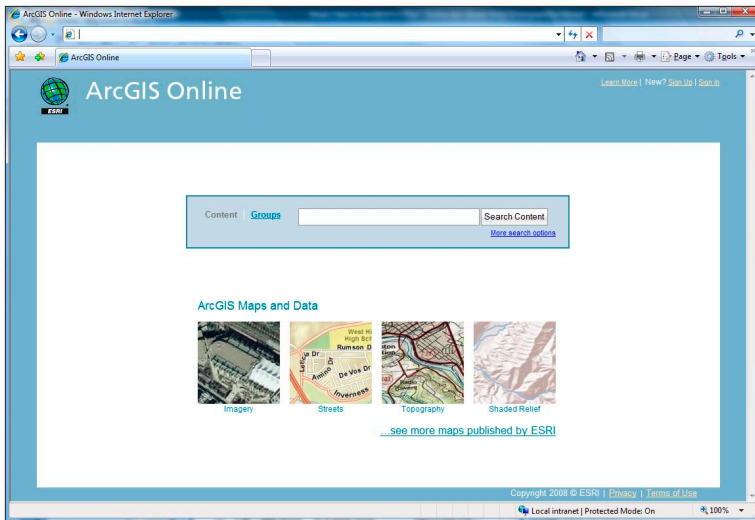
- Select from ArcGIS APIs for JavaScript™, Flex™, and new Microsoft® Silverlight™.
- Mash up information from multiple Web sources.
- Create applications with an intuitive, visually rich, and responsive user interface.

ArcGIS Server Licensing Changes Give You More Flexibility

- Perform editing with ArcGIS Server Standard.
- Use Spatial, 3D, Network, and Geostatistical extensions with ArcGIS Server Advanced for no additional fee.
- Deploy the Web Application Development Framework (ADF™), Web service handlers, and server object manager without paying a deployment license fee.

Unlock the potential of your GIS. Learn more about ArcGIS 9.3.1 at www.esri.com/whatsnew.





ArcGIS Online is a central resource for ArcGIS users to share, find, and store maps, layers, and services.

What's New in ArcGIS Online 9.3.1

ArcGIS 9.3.1 improves the finding and sharing of geographic information by allowing users to share layers, maps, and services using new functionality.

Get Your Work Done Faster at the Speed of the Web

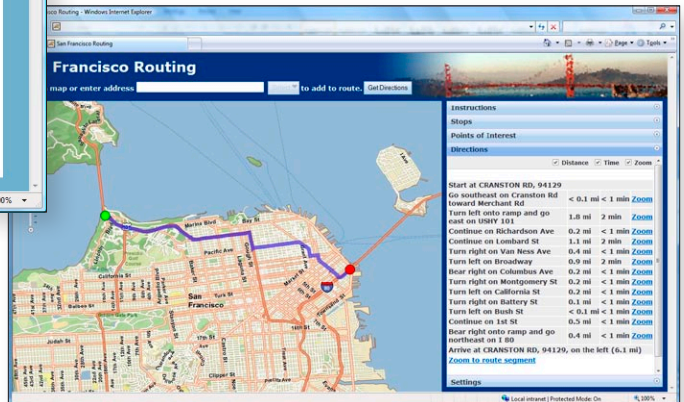
- Search and share layers, maps, and services published by ESRI and other ArcGIS users.
- Upload and share your content with other ArcGIS users.
- Create your own Web maps with no programming.
- Fuse user maps with ArcGIS™ Online maps by accessing provided map templates.
- Easily create and share layer packages that contain useful information such as extent and spatial reference.

Quickly Add Dynamic Location Services to ArcGIS Desktop and ArcGIS Server

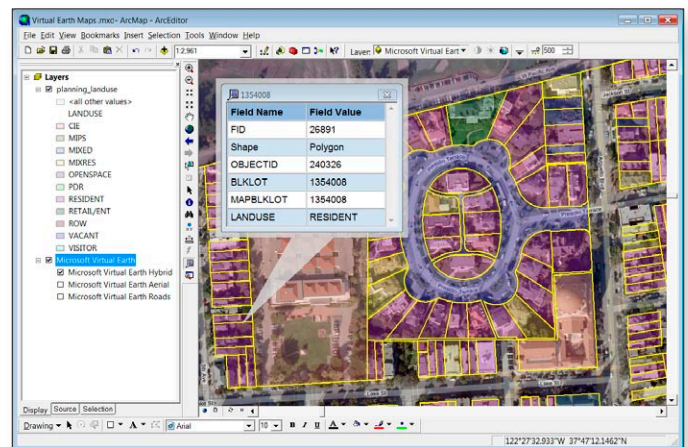
- Execute geocoding, reverse geocoding, batch geocoding, and world place-finding capabilities.
- Provide point-to-point and optimized routing and driving directions.
- Perform drive-time calculations using an input location and drive-time values.

Connect Directly to Bing Maps for High-Quality Basemaps

- Connect directly to Bing™ Maps using ArcGIS Desktop and ArcGIS Server.
- Integrate ArcGIS Server and Bing Maps capabilities in a rich, interactive environment.



Develop Web applications that incorporate ArcGIS Online geocoding and routing services.



Add your own GIS layers to Microsoft Virtual Earth basemaps.



Learn more about ArcGIS 9.3.1 at www.esri.com/whatsnew.