



ArcGIS® 9.2 Server Support for Keyhole Markup Language

An ESRI® Technical Paper • February 2006

Copyright © 2006 ESRI
All rights reserved.
Printed in the United States of America.

The information contained in this document is the exclusive property of ESRI. This work is protected under United States copyright law and other international copyright treaties and conventions. No part of this work may be reproduced or transmitted in any form or by any means, electronic or mechanical, including photocopying and recording, or by any information storage or retrieval system, except as expressly permitted in writing by ESRI. All requests should be sent to Attention: Contracts and Legal Services Manager, ESRI, 380 New York Street, Redlands, CA 92373-8100, USA.

The information contained in this document is subject to change without notice.

U.S. GOVERNMENT RESTRICTED/LIMITED RIGHTS

Any software, documentation, and/or data delivered hereunder is subject to the terms of the License Agreement. In no event shall the U.S. Government acquire greater than RESTRICTED/LIMITED RIGHTS. At a minimum, use, duplication, or disclosure by the U.S. Government is subject to restrictions as set forth in FAR §52.227-14 Alternates I, II, and III (JUN 1987); FAR §52.227-19 (JUN 1987) and/or FAR §12.211/12.212 (Commercial Technical Data/Computer Software); and DFARS §252.227-7015 (NOV 1995) (Technical Data) and/or DFARS §227.7202 (Computer Software), as applicable. Contractor/Manufacturer is ESRI, 380 New York Street, Redlands, CA 92373-8100, USA.

ESRI, the ESRI globe logo, ADF, ArcGIS, ArcCatalog, www.esri.com, and @esri.com are trademarks, registered trademarks, or service marks of ESRI in the United States, the European Community, or certain other jurisdictions. Other companies and products mentioned herein are trademarks or registered trademarks of their respective trademark owners.

ArcGIS 9.2 Server Support for Keyhole Markup Language

ArcGIS® Server will be enhanced at version 9.2 to allow publishing of geographic information system data in a format that can be consumed by Keyhole Markup Language (KML) clients including Google® Earth. This paper illustrates the user interface of ESRI® ArcGIS 9.2 Server at the Beta 1 release and is subject to change prior to the final release.

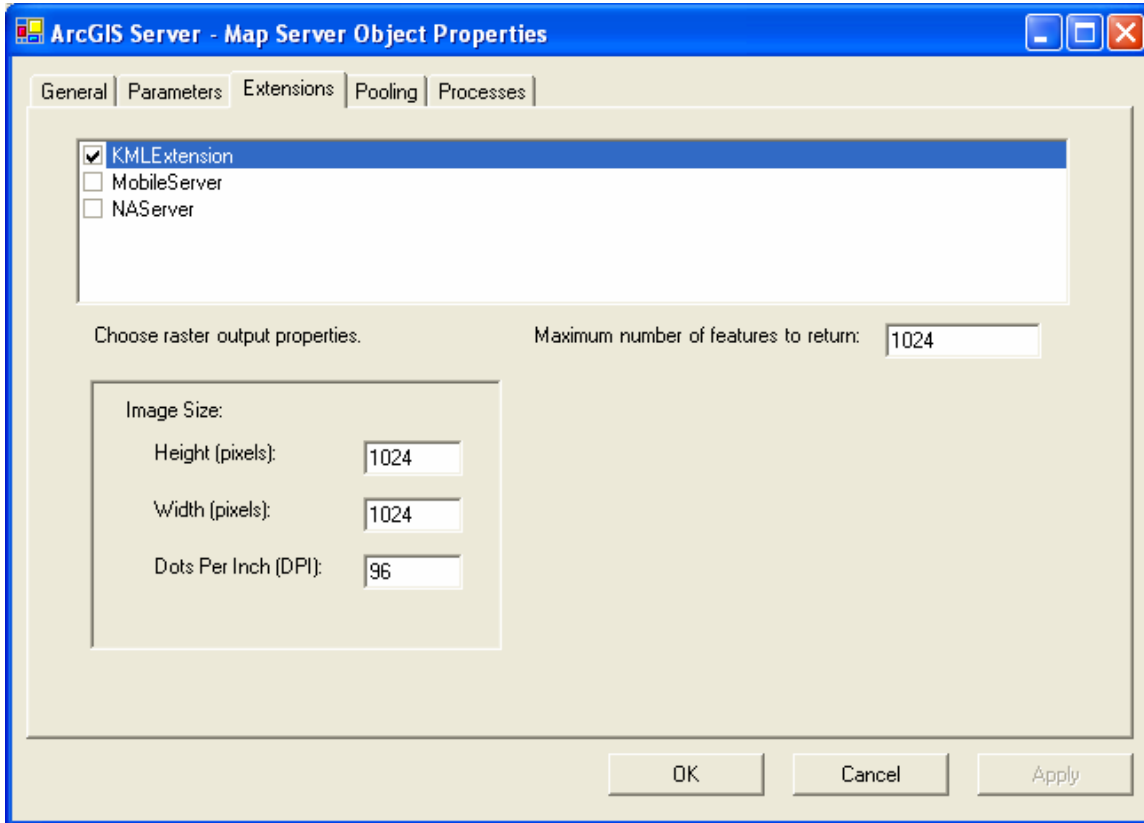
In short, the KML Server Object Extension (SOE) will work just as any other SOE for ArcGIS Server. In addition to KML, SOEs that will be available with ArcGIS 9.2 Server include

- Web Map Service Publishing
- Mobile Client Application Development Framework (ADF™) Publishing
- ArcGIS Network Analyst

In addition, users will be given the option of creating and deploying custom SOEs. Once you have decided to use ArcGIS Server to publish data as KML, the steps for doing so are very straightforward. When a Map Server Object is created via ArcCatalog™ or the Java™ Web Administrator, the administrator will be given the option of including the KML SOE with it. If this option is chosen, then the Map Server Object will be available to KML clients. It is as simple as checking a box.

See the illustration below of the SOE preference pane, which will allow administrative configuration of SOE. Some of the options that will be available to administrators are

- Specify a maximum number of features to be returned.
- Select a <GroundOverlay> output screen resolution in dots per inch and image size with a maximum no greater than 2,000 x 2,000 pixels.



The final step in publishing KML with ArcGIS Server will be the creation of a Web service endpoint for KML clients to access. This will be done through the Web service publisher, a stand-alone utility that ships with ArcGIS Server and will not require any customization or use of a development environment.

The ArcGIS Server Administrator will be responsible for generating a Google Earth network link KML file containing the URL of the HTTP endpoint that can be distributed to clients.

ArcGIS 9.2 supports the full range of KML symbology and functionality including delivery of data in KML, zipped (KMZ) format. KMZ files are KML files that have been zipped along with their related files such as image overlays. Users who add data from ESRI KML services will see full integration within KML clients for both symbology and table of contents.



For more than 35 years, ESRI has been helping people manage and analyze geographic information. ESRI offers a framework for implementing GIS technology in any organization with a seamless link from personal GIS on the desktop to enterprise-wide GIS client/server and data management systems. ESRI GIS solutions are flexible and can be customized to meet the needs of our users. ESRI is a full-service GIS company, ready to help you begin, grow, and build success with GIS.

Corporate

ESRI
380 New York Street
Redlands, California
92373-8100, USA
Telephone: 909-793-2853
Fax: 909-793-5953

For more information
on ESRI, call

1-800-447-9778

(1-800-GIS-XPRT)

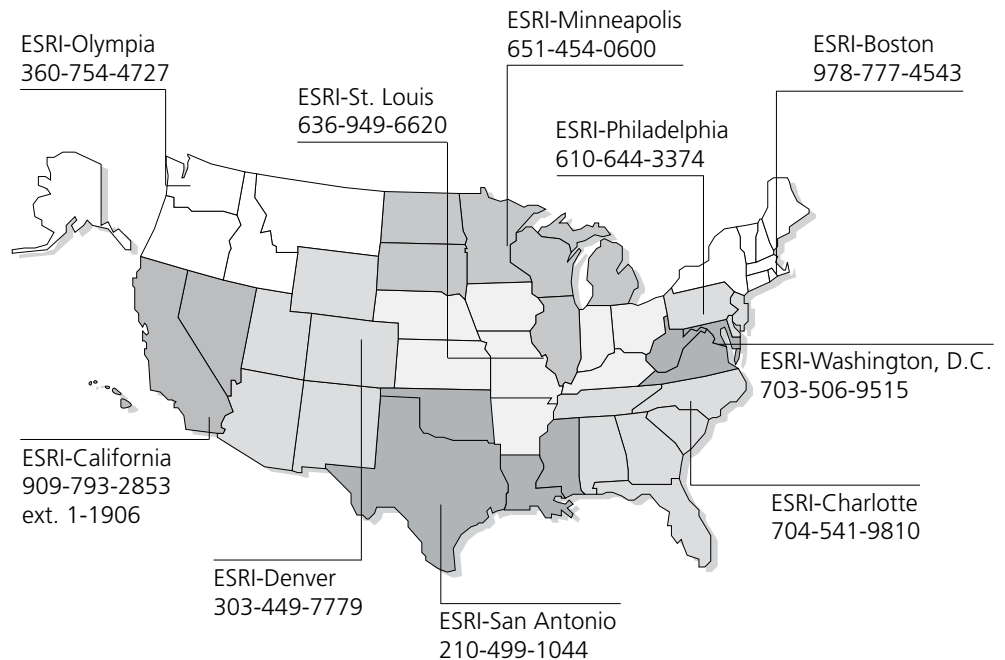
or contact an ESRI value-added
reseller near you.

Send e-mail inquiries to
info@esri.com

Visit ESRI's Web page at
www.esri.com

Outside the United States,
contact your local ESRI distributor.
For the number of your distributor,
call ESRI at 909-793-2853,
ext. 1-1235,
or visit our Web site at
www.esri.com/international

Regional Offices



International Offices

Australia
www.esriaustralia.com.au

Belgium/Luxembourg
www.esribelux.com

Bulgaria
www.esribulgaria.com

Canada
www.esricanada.com

China (Beijing)
www.esrichina-bj.cn

China (Hong Kong)
www.esrichina-hk.com

Finland
www.esri-finland.com

France
www.esrifrance.fr

Germany/Switzerland
www.esri-germany.de
www.esri-suisse.ch

Hungary
www.esrihu.hu

India
www.esriindia.com

Indonesia/Malaysia
62-21-527-1023
603-7874-9930

Italy
www.esriitalia.it

Japan
www.esrij.com

Korea
www.esrikr.co.kr

Netherlands
www.esrinl.com

Poland
www.esripolska.com.pl

Portugal
www.esri-portugal.pt

Romania
www.esriro.ro

Singapore
www.esrisa.com

Spain
www.esri-es.com

Sweden
www.esri-sweden.com

Thailand
www.esri-th.com/indochina

United Kingdom
www.esriuk.com

Venezuela
www.esri-ven.com



Place ESRI business partner or distributor address here.



No. GS-35F-5086H