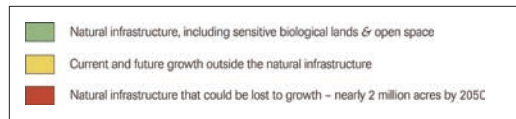
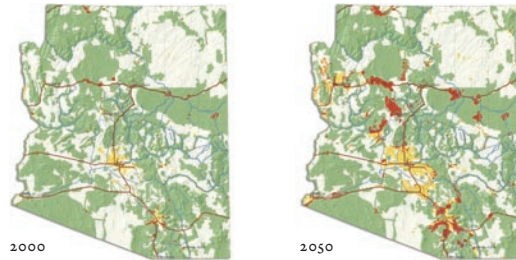
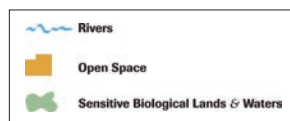
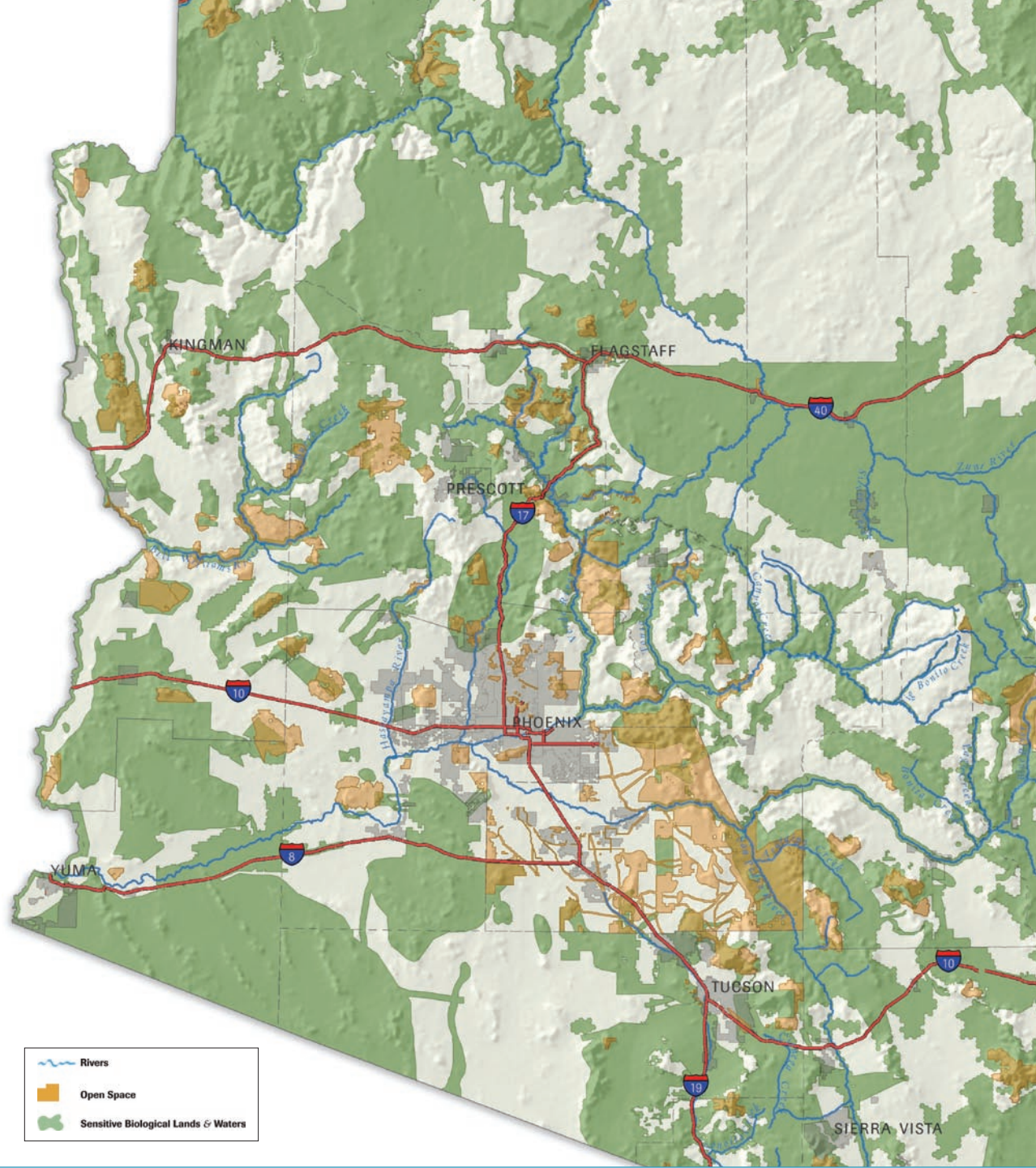
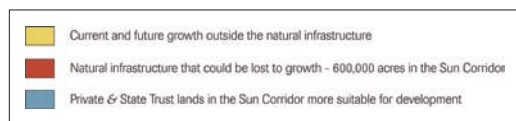
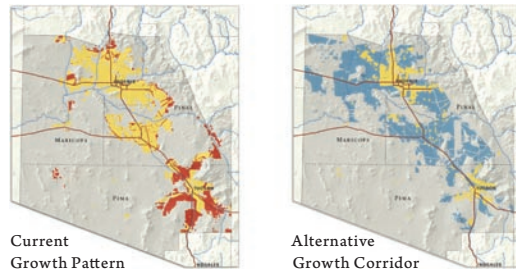


Projected Growth Impacts in 2050



Alternative Scenarios of Arizona's Growth and Natural Infrastructure in 2050



The Nature Conservancy

Tucson, Arizona, USA
By Dan Majka, Marcos Robles, and Rob Marshall

Contact

Dan Majka
dmajka@tnc.org

Software

ArcGIS Desktop

Printer

HP Designjet 800 ps

Data Sources

The Nature Conservancy, state agencies

Arizona's natural infrastructure includes lands and waters that preserve the state's natural heritage and open space. The Nature Conservancy developed a natural infrastructure dataset by integrating twelve regional studies on wildlife habitat and open space, and used the dataset to understand the potential impacts of Arizona's future growth by 2050.

Results show that although Arizona's population is projected to double by 2050, its associated urban footprint may quadruple. If growth follows current projections, Arizona could lose nearly two million acres of natural infrastructure by 2050. This loss of desert, grassland, and forest habitat could jeopardize at least 120 species.

However, there are 2.7 million acres of undeveloped private and state lands outside of the natural infrastructure and within 30 miles of existing highways. Shifting projected development into these areas would minimize direct impacts to the natural infrastructure.

Courtesy of The Nature Conservancy.