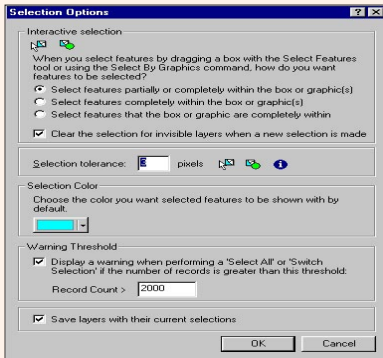


# Moving to ArcGIS



## Setting Selection Tolerance

When graphically selecting features in ArcMap using the Select Features or Identify tools, you can set the tolerance so that it is easier to select the desired feature. This can be useful if the map is densely populated with features or the features are small. Choose Selection > Options from the menu. In the Selection Options dialog box, change the number of pixels in the Selection tolerance section by selecting the older value and typing in a new one. Click OK.

## Zoom to a Predetermined Extent

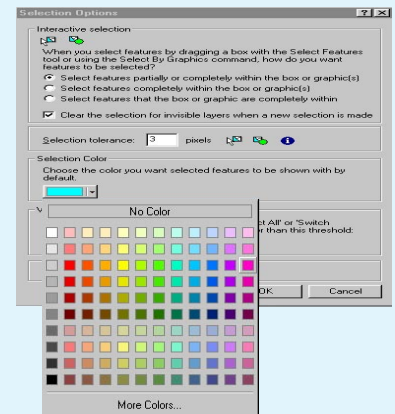
The ArcView 3.x Named Extent extension saves and names a specific View extent so you can return to it quickly without repeated zooming. ArcMap bookmarks, available as a simple menu choice in ArcInfo, ArcEditor, or ArcView, give you that same functionality. When you have zoomed and panned to an area on a map, choose View > Bookmark > Create. In the Spatial Bookmark dialog box give the bookmark a name and click OK. Return to a bookmarked extent by choosing View > Bookmark and click on the name of the bookmark. Rename or delete existing bookmarks by choosing View > Bookmark > Manage.

If you haven't upgraded to ArcGIS, visit [www.esri.com/arcview](http://www.esri.com/arcview) to request a 60-day evaluation copy of ArcView 8.1 that also includes evaluation copies of the ArcGIS Spatialist Analyst, ArcGIS 3D Analyst, ArcGIS Geostatistical Analyst, and ArcPress for ArcGIS extensions.

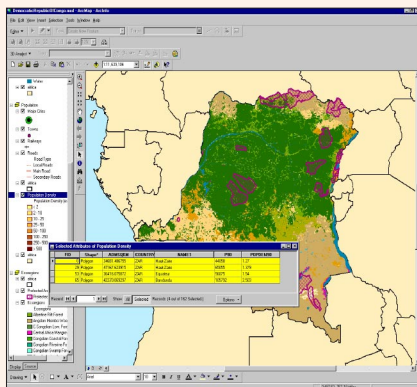
## Change the Highlight Color

If the default highlight color, cyan, is difficult to see against the layers displayed in ArcMap, change the highlight color by choosing Selection > Options from the menu. In the Selection Options dialog box, click on the arrow next to the color box in the Selection Color section. Choose a new highlight color from the palette and click OK. Now, selection choices for this map will be highlighted in the new color.

The highlight color can also be specified for an individual layer. Right-click on the layer in the table of contents and choose Properties from the context menu. In the Layer Properties dialog box, click on the Selection tab. Click on the sample of the current highlight color to bring up the Symbol Selector dialog box. Click the down arrow next to the Outline Color and choose a new highlight color for this layer from the palette. This new choice overrides the map choice made using the Selection Options dialog box.



## Promoting Selected Items in a Table



ArcView 3.x users know that selected items in a table can be more easily viewed by grouping them. Clicking the Promote button in the Table View will move all selected items to the top of the table. The same thing can be accomplished in ArcMap. After selecting items, either graphically or through a query, open the attribute table by right-clicking on the desired layer in the table of contents. Choose Open Attribute Table from the context menu. Two buttons, All and Selected, are located at the bottom of the table next to Show:. Click the Selected button to view just the selected items in the table.