



# Technology Update

*ESRI International User Conference 2005*  
*ESRI SAP User Group Meeting*

# Agenda

- Current integration options
- Packaged Solutions
- SAP Business Intelligence

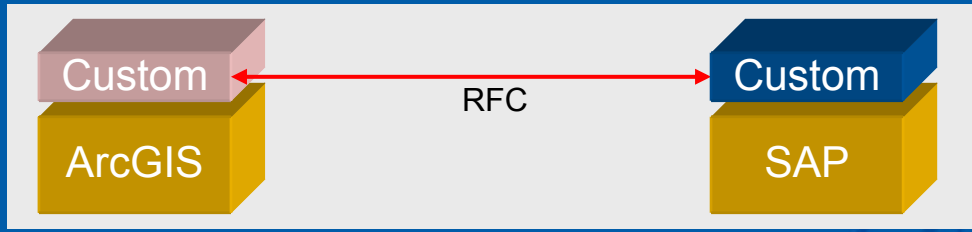


# ESRI Best Practices Considerations

- Business factors to consider ...
  - Workflow (data and navigation modeling)
  - IT environment/strategy/standards
  - Integration strategy/standards
- Integration solution has to be ...
  - Sufficient: Meets customer's needs
  - Appropriate: Solution is not over-engineered
  - Feasible: Can be implemented within time allotted
  - Affordable: Managed within expected/reasonable IT budget
  - Maintainable & Flexible: Adapts to change; low TCO
- No one-size-fits-all
  - ESRI, Business Partners offer Integration Strategy/Methodology Services

# Integration Options

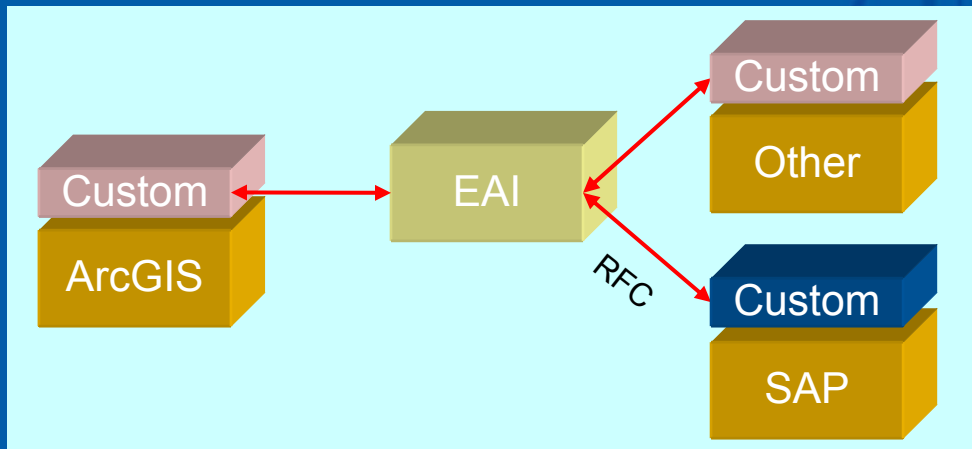
Three conceptually different integration options:



## Point-to-Point Interface

Custom application integration based on SAP RFC protocol

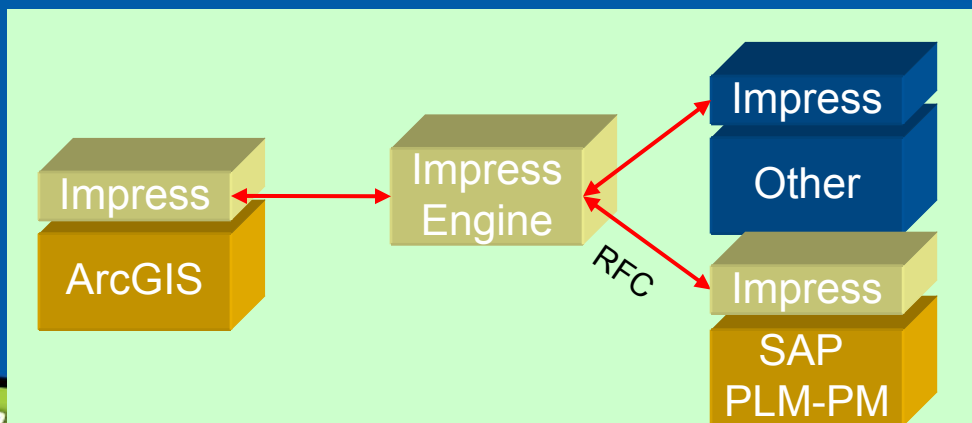
- GBC (limited SAP integration)
- iWay (integrates other systems)



## Integration Middleware

Custom application integration based on commercial messaging system:

- IBM WebSphere MQ
- SAP XI
- Impress Engine



## Commercial Integration Solutions

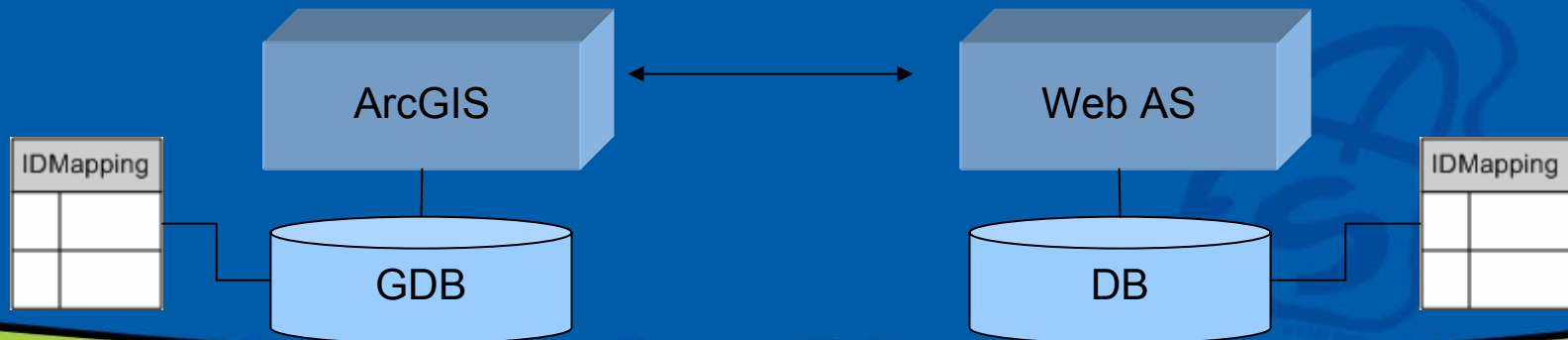
Packaged integration applications based on commercial integration platform:

- Impress Geo I.App
- Future SAP xApps



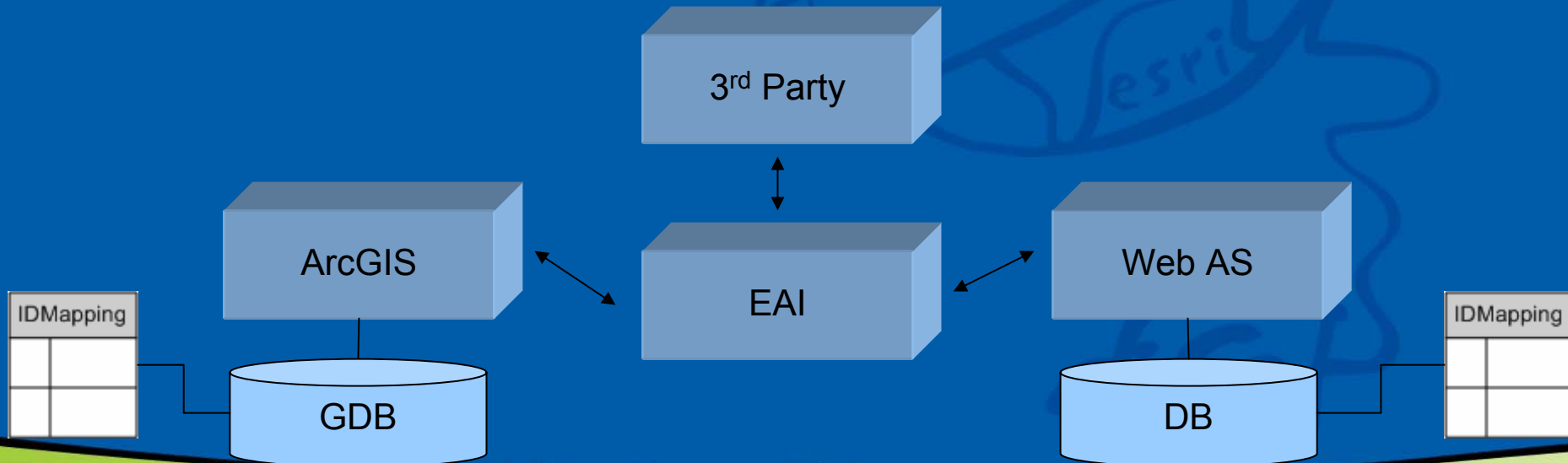
# Point-to-Point Integration

- Based on proprietary SAP protocols
  - Remote Function Call (RFC)
  - Business Application Programming Interface (BAPI)
- Requires custom development
- Some “connectors” such as GBC and iWay
- Only lightweight interface required (links maintained in SAP or GIS)
- Good performance
- Very limited up-front budget (TCO not the lowest over the years)
- Hard to evolve into many-to-many architectures



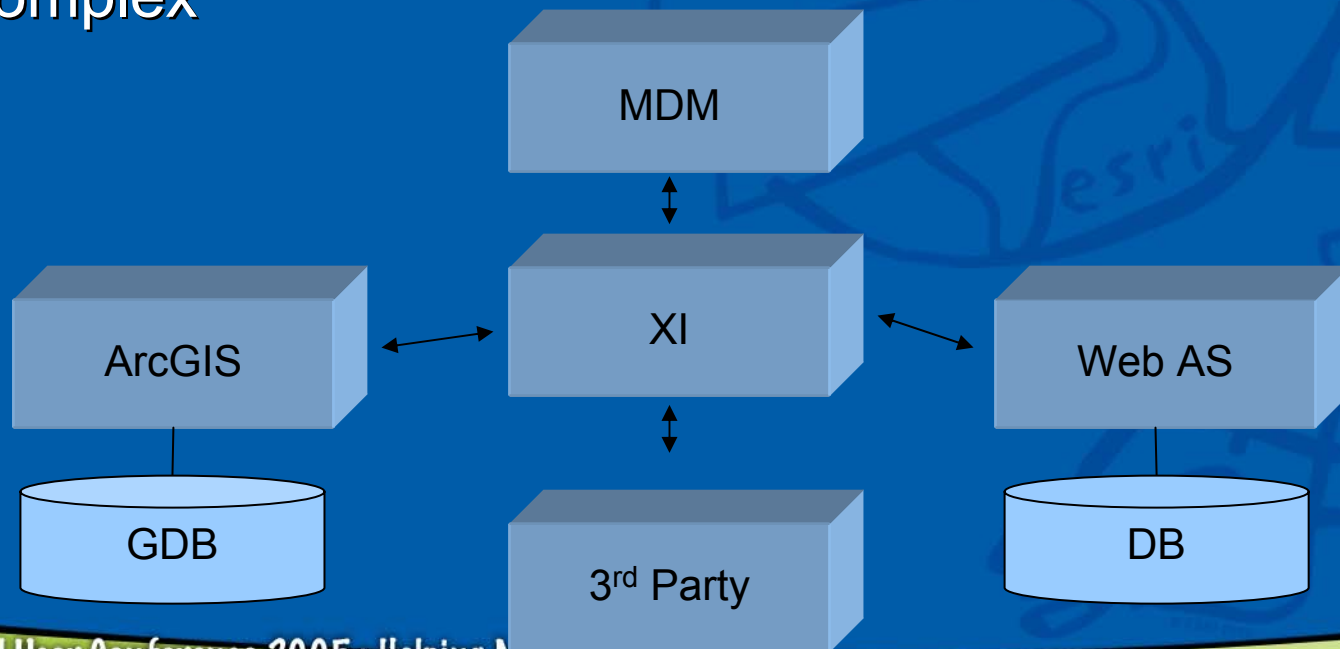
# EAI Platform

- Based on (proprietary) integration product
  - Information Builders
  - WebMethods
  - IBM
  - SAP XI
- Can function as enterprise service bus in services-oriented architecture
- Higher up-front costs for software licensing
- Lower TCO than point-to-point but requires customer to do “wiring”



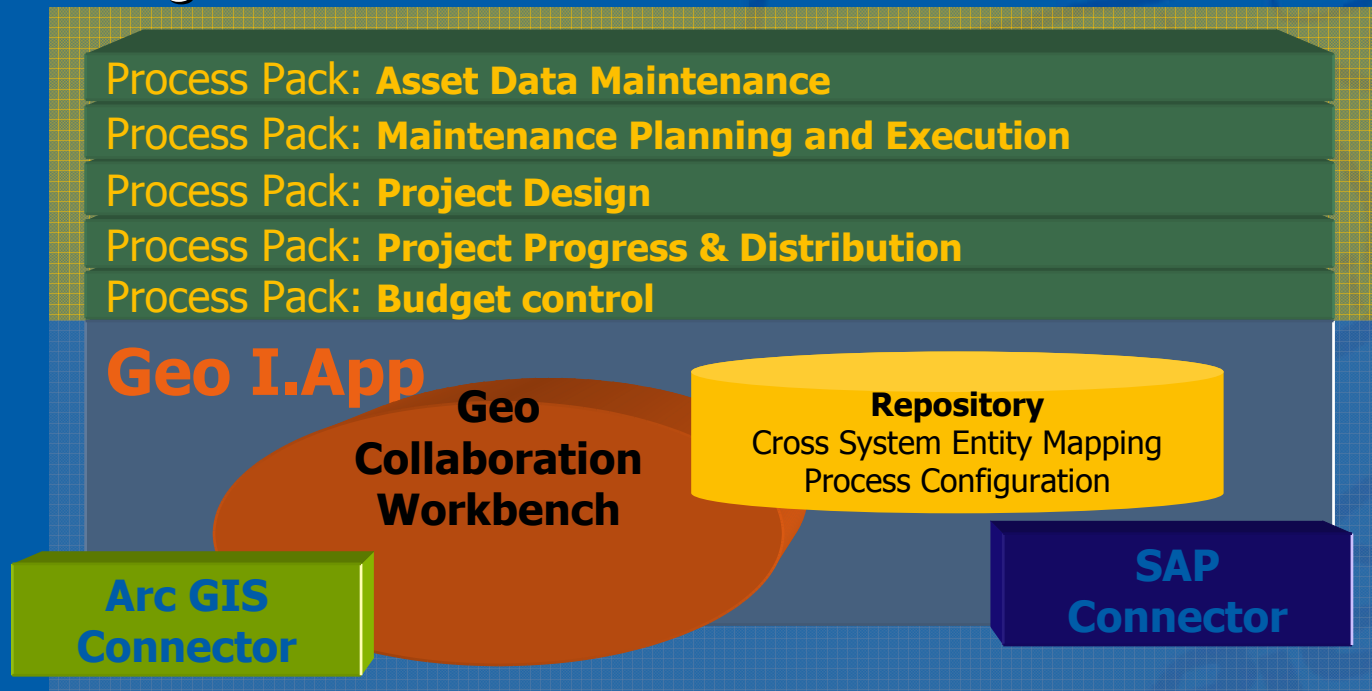
# SAP Exchange Infrastructure (XI)

- Typical EAI Infrastructure
- SAP XI 3.0 is part of Netweaver
- Integrates different SAP applications and 3<sup>rd</sup>-party applications
- Coupled with enterprise-wide master data synchronization
- Graphical tools for configuration and administration
- Complex



# Impress Geo I.App

- Packaged application between ArcGIS and PLM
  - 80% functionality out-of-the-box
- Short implementation time
- Higher up-front costs, low TCO
- Automated consistency management
- Integration with ArcFM





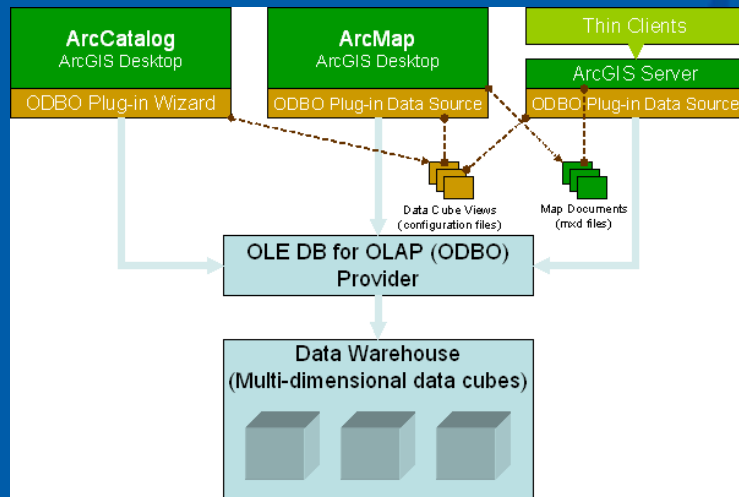
# SAP xApps

- Based on XI and SAP Composite Application Framework
- Packaged SAP xApps
  - Cost and Quotation Management
  - Portfolio Management
  - Others
- Partner xApps

# SAP Business Intelligence

The OLAP Add-on for ArcGIS Solution provides:

- Direct access to SAP Business Information Warehouse (BW) from ArcGIS Desktop, ArcGIS Server and ArcIMS ArcMap Server.
- An OLAP Table Wizard to browse business data and to prepare data views for ArcGIS.
- Currently in beta testing.



- ▶ View live OLAP data in ArcGIS without data import or export.
- ▶ Enhance thematic maps with business intelligence data
- ▶ Improve traditional reports and charts by adding sophisticated maps from ArcGIS

# For more information

Contact:

[sapinquiries@esri.com](mailto:sapinquiries@esri.com)