



### What is SAS Web OLAP Viewer for Java?

SAS Web OLAP Viewer for Java is a Web application that provides a Web interface for viewing and exploring OLAP data. It lets business users look at data from multiple angles, view increasing levels of detail and add linked graphs or maps to gain greater insights into trends, exceptions and opportunities.

### Why is SAS Web OLAP Viewer for Java important?

It empowers business users with the ability formulate and ask questions, explore consistent data and get their own answers without constantly involving IT.

### For whom is SAS Web OLAP Viewer for Java designed?

SAS Web OLAP Viewer for Java is designed for business analysts who need to quickly look at summaries of large data volumes from multiple angles.

## SAS® Web OLAP Viewer for Java

*Web-based data exploration and analysis for business users*

Increasing numbers of users are demanding the ability to look at, and explore, data organized around business dimensions. But most organizations have limited IT resources to support additional large client software deployments. Many OLAP viewers are Microsoft Windows-based and require a local installation on each client machine. Or, they are Web-based viewers that due to security policies must be installed by IT on every local client. A significant portion of the IT budget must be dedicated to maintenance costs for repetitive installations of client-side applications.

In addition to this, most OLAP and reporting tools exist in their own separate worlds. Business users want fast, simple OLAP data exploration as well the ability to create and format high-quality boardroom reports from their results. But this is difficult when OLAP and reporting tools aren't easily integrated. Analysts need additional capabilities to add calculations or change views between tables, graphs and maps with a few clicks to gain a deeper understanding of the information. These users often fall back to Microsoft Excel Pivot tables and maintain spreadsheet data marts on their personal computers. Frequently these spreadsheets contain outdated information or use data incorrectly, which creates problems for everyone.

SAS Web OLAP Viewer for Java is a Web interface that lets business users look at data from multiple angles, drill into detail data, and save their information for easy Web-based report

creation, while giving IT central control over the data. Everyone uses consistent data and has the power to create accurate new insights.

### Key benefits

- Enables business users to analyze and explore multidimensional information on the Web.** SAS Web OLAP Viewer for Java is an interface specifically targeted for business analysts working with OLAP data. They can explore data, decide how to best visualize data and save such views. Views can either be kept private or shared with other colleagues. It provides a full set of functionality to analyze OLAP data originating from corporate data sources maintained by IT.
- Lets business users create boardroom quality reports based on views generated from OLAP data.** Views on OLAP data can be stored as standard reports that can be edited and formatted with SAS Web Report Studio to create high-quality reports for print or reuse on the Web.
- Reduces deployment costs.** SAS Web OLAP Viewer for Java is a Web application that is deployed once on the Web application server. All authorized users can access the OLAP Viewer from their Web browser without downloading any components to their local machines.

## Product overview

As a Web application, SAS Web OLAP Viewer for Java provides multidimensional data analysis from a standard Web browser, without having to download or install anything on the client side. Business users can easily explore data by drilling through hierarchies, swapping dimensions and slicing through cubes. Analysts can add calculations, percentage contributions or conditional highlighters to their views and swap between different representations of data such as tables and charts.

OLAP data views can be stored as standard SAS reports either in a private area or in public folders. Views saved as reports in SAS Web OLAP Viewer for Java can be viewed and edited from within SAS Web Report Studio, which provides easy-to-use report layout capabilities.

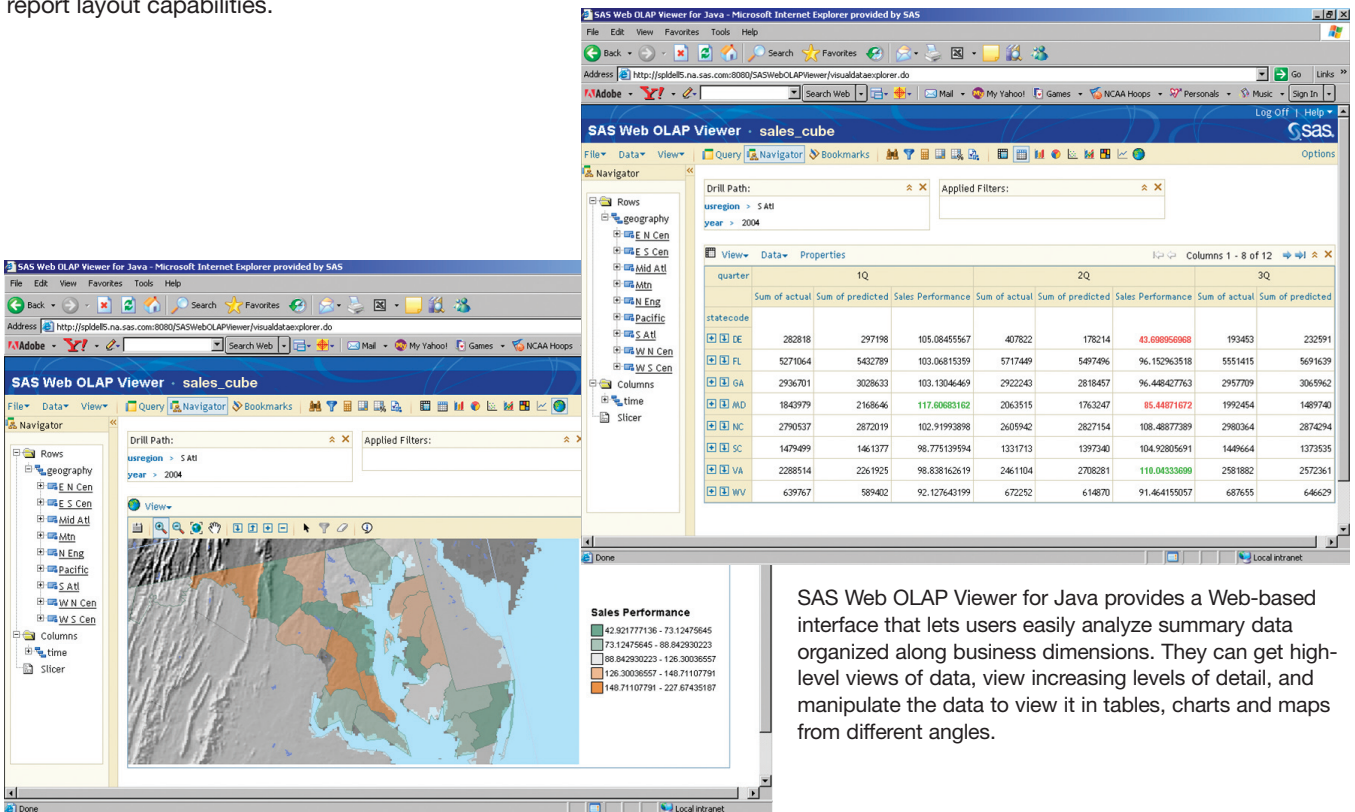
SAS Web OLAP Viewer for Java connects back to the SAS OLAP Server to retrieve data displayed in views, ensuring that a single version of truth is surfaced throughout the organization. The multithreaded OLAP server ensures a fast, consistent response for correctly designed data sources.

SAS Web OLAP Viewer for Java can use SAS Information Maps (business metadata maps) or it can access OLAP data sources directly. This choice enables IT departments to either define the way users can access data sources using SAS Information maps or give users the freedom to fully access data sources without any restrictions.

SAS Web OLAP Viewer for Java is delivered as a component of SAS Enterprise BI Server and SAS BI Server.

## Explore OLAP data

Business users can select an OLAP data source and explore multidimensional data using a table or graph view. They can change business queries, dice data by applying filters, drill up and down through hierarchies, and obtain detailed information for every cell with the option to export to Excel.



SAS Web OLAP Viewer for Java provides a Web-based interface that lets users easily analyze summary data organized along business dimensions. They can get high-level views of data, view increasing levels of detail, and manipulate the data to view it in tables, charts and maps from different angles.

## Analyze OLAP data

Multidimensional views can be adapted to business scenarios in many different ways, including applying filters and rankings, calculating new measures, sorting, and adding totals and subtotals.

## Interactively explore geographical maps

Maps from ESRI's ArcGIS Server can be used to display SAS OLAP data just like other views of the data. Users can drill on map regions to visualize information from an OLAP data source in real time. SAS Web OLAP Viewer for Java can display OLAP data as color coding on top of ESRI maps within its standard feature set. A map is one form of a graphical representation of data, in addition to bar charts, tile charts or line charts, that lets users explore data by drilling up and down hierarchies and slicing through data.

## Easily save and publish results

Views that reveal new business insights can be easily saved and shared among colleagues, saved as SAS Web Report Studio reports for further formatting, or saved as Microsoft Excel spreadsheets or Adobe PDF documents. Within SAS Web Report Studio all layout capabilities can be applied, including headers, footers, graph properties, table properties, conditional highlighting, or group breaks and automatic text.

## Key Features

### Data sources

- Open a SAS Information Map that provides access to an OLAP cube via business metadata.
- Open a SAS OLAP cube directly without using business metadata (optional).
- Open a saved view on business data.

### Explore OLAP data

- Explore multidimensional data using a table or graph view (color-coded table, bar chart, bar-line chart, line plot, pie chart, scatter plot, tile chart, map).
- Change business queries by selecting business items to be displayed from a side bar.
- Slice through multidimensional data using a special slicer dimension.
- Dice multidimensional data by applying filters on any level of a hierarchy.
- Drill up/down through hierarchies or expand/collapse entire levels.
- Explore data following ragged or unbalanced hierarchies that model true hierarchies as they are experienced in business.
- Obtain detailed information for every cell (drill-through) with the option to export it to Excel.
- Display and filter on properties associated with members inside the OLAP data source (member properties).

### Analyze OLAP data

- Rank multidimensional data to identify top performers or losers (ties can be handled).
- Display totals and subtotals on cross tables.
- Add the percentage that a measure contributes to the total or a subtotal of a table with a single click on a dedicated button.
- Calculate new measures and add them to any view.

### ESRI maps

- Use maps from ESRI's ArcGIS Server to display OLAP data just like any other view on the data.
- Synchronized drill and display for map and table view.
- Drill on regions in the map visualizing information from an OLAP data source in real time, enabling a zoom down to the level of individual houses on a road.
- Drive the color coding of maps by data from the OLAP data source.

### Conditional highlighting

- Conditional Highlighting provides visual highlighting of information inside tables and graphs depending on conditions defined by the user.
- Conditional highlighting can use text formatting, cell formatting, text replacement with fixed strings or images, and displaying of images next to cell values.

### Save and publish

- Save any view that reveals new business insights in a personal view called a Data Exploration.
- Share views with colleagues by publishing views to public Data Explorations.
- Share entire Data Explorations containing multiple views with colleagues by publishing Data Explorations.
- Save views as SAS Web Report Studio reports.
- Save views as Microsoft Excel spreadsheets or Adobe PDF documents.

### Application branding

- Change the appearance of SAS Web OLAP Viewer for Java to match corporate identity guidelines by adding company logos, by using specific fonts throughout the application, and by using color schemas that match the company guidelines.

## SAS® Web OLAP Viewer for Java

### Technical requirements

#### *Client environment*

All SAS Business Intelligence clients run in a Windows desktop environment.

- Windows (x86-32): Windows 2000 Professional, Windows XP Professional
- Internet Explorer 5.5+

#### *Server environment*

- SAS Web OLAP Viewer for Java must connect to an environment running SAS BI Server or SAS Enterprise BI Server.
- Please refer to the SAS Enterprise BI Server Fact Sheet for a complete list of supported hardware systems, including Windows, UNIX, Linux and mainframe.

#### *Required software*

- SAS Web OLAP Viewer for Java is delivered as a component of SAS Enterprise BI Server and SAS BI Server.
- ESRI ArcGis Server 9.0 with ESRI Service Pack 2.



World Headquarters  
and SAS Americas  
SAS Campus Drive  
Cary, NC 27513 USA  
Tel: (1) 919 677 8000  
Fax: (1) 919 677 4444  
U.S. & Canada sales:  
(1) 800 727 0025

SAS International  
PO Box 10 53 40  
Neuenheimer Landsr. 28-30  
D-69043 Heidelberg, Germany  
Tel: (49) 6221 4160  
Fax: (49) 6221 474850

**[www.sas.com](http://www.sas.com)**