

## SAS® Bridge for ESRI

*Enabling true, spatially-enabled intelligence for research and competitive advantage.*

Enterprises can encounter several issues while working with their mapping systems, one of which is the ability to analyze and link spatial information with other data sources. There is also the need to get the results of spatial analysis into your analytic system. But how do you get a complete system with so many disparate solutions on the market?

SAS, the market leader in business intelligence and ESRI, the leader in geographic information system (GIS) software, have created a product that links the companies' software. Called SAS® Bridge for ESRI, the solution improves efficiency, provides extended analytical capabilities and more intelligent results, and communicates them with increased effectiveness by linking spatial, numeric and textual data through a single interface that allows information to flow between ESRI's ArcGIS and SAS.

The initial release of SAS Bridge for ESRI will operate under SAS® Release 8.2 and higher Windows desktop and NT server environments, and will work with desktop ArcGIS 8.2+ and directly link to ArcInfo, ArcView and ArcEditor utilizing ArcCatalog and ArcMap. It can also be used within a distributed SAS environment.

This first version (1.0) allows the exchange of data between SAS and ArcGIS, and exposes metadata from SAS tables. Guidance is also provided for running SAS programs from the ESRI ArcGIS environment.

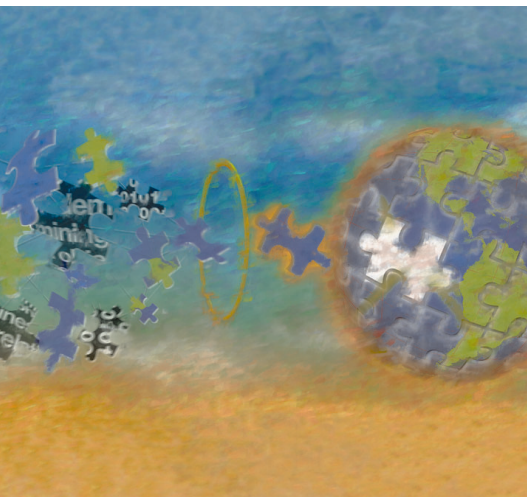
Major features of SAS Bridge for ESRI include:

- Simplified interface for SAS and ESRI communication.
- Read/write attribute exchange to SAS datasets.
- ArcGIS surfacing of SAS metadata.
- Execution of SAS programs from ArcGIS environment is enabled and examples of stored processes are provided.
- Access to your distributed SAS systems and data.
- InstallShield Wizard with checks for SAS and ESRI software.
- Add-on product to Base SAS that requires ArcGIS 8.2+.

### The Benefits Abound

With SAS Bridge for ESRI, you can increase your efficiency by easily linking tabular data in SAS with spatial data in the ArcGIS environment. This means that queries from ArcGIS can inherently consider attributes developed within SAS. No longer will you need to re-write customized programs every time your source data changes — just link the relevant tables for complete information. Having access to richer data means greater understanding, and ultimately, better decisions.

You can also communicate results better by showing industrial-strength analytical and business intelligence graphics on your maps for immediate recognition and understanding. Since SAS Bridge for ESRI utilizes the ArcGIS interface, users have the industry-leading



GIS interface in which to access the power and quality of SAS.

In addition, this solution enables you to extend your analytical capabilities to obtain results that inherently consider spatial attributes. You'll be able to distinguish significant from insignificant findings — going beyond physical coincidence to true, measurable results. You can utilize SAS to create accurate representations of current and future events, and then treat the results as spatial-references attributes. These attributes can then be visualized as a thematic layer, and/or used as input for additional spatial analysis. You can extend your use of ESRI's ArcGIS by ensuring that spatial proximities, adjacencies and the like become variables in your analysis — inherently considering the impact of spatial phenomena in your decisions.

Given the best-of-breed depth and breadth of both SAS and ESRI, SAS Bridge for ESRI enables you to extend your ability to consider numeric, textual and spatial data together, in a linked environment — extending the scope of information that can be utilized to solve even the most complex organizational questions.

### About ESRI

For more than 30 years, ESRI has been the leading developer of geographic information system (GIS) software with more than 300,000 clients worldwide. ESRI software is used in all 200 of the largest cities in the United States and in more than 60 percent of counties and municipalities nationwide. Headquartered in California, ESRI has regional offices throughout the United States, international distributors in more than 90 countries, and more than 1,500 business partners. ESRI's goal is to develop comprehensive tools that enable users to efficiently manage, use, and serve geographic information to make a difference in the world around them. ESRI also provides consulting, implementation, and technical support services. ESRI can be found on the Web at [www.esri.com](http://www.esri.com).

### About SAS

SAS is the market leader in providing a new generation of business intelligence software and services that create true enterprise intelligence. SAS solutions are used at more than 39,000 sites — including 98 of the top 100 businesses on the Fortune 500 — to develop more profitable relationships with customers and suppliers; to enable better, more accurate and informed decisions; and to drive organizations forward. SAS is the only vendor that completely integrates leading data warehousing, analytics and traditional BI applications to create intelligence from massive amounts of data. For more than 25 years, SAS has been giving customers around the world *The Power to Know*<sup>®</sup>.



World Headquarters  
and SAS Americas  
SAS Campus Drive  
Cary, NC 27513 USA  
Tel: (919) 677 8000  
Fax: (919) 677 4444  
U.S. & Canada sales:  
(800) 727 0025

SAS International  
PO Box 10 53 40  
Neuenheimer Landstr. 28-30  
D-69043 Heidelberg, Germany  
Tel: (49) 6221 4160  
Fax: (49) 6221 474850

[www.sas.com](http://www.sas.com)

SAS and all other SAS Institute Inc. product or service names are registered trademarks or trademarks of SAS Institute Inc. in the USA and other countries. © indicates USA registration. Other brand and product names are trademarks of their respective companies. Copyright © 2002, SAS Institute Inc. All rights reserved. 100536US\_213810.1102

ESRI, the ESRI globe logo, GIS by ESRI, ArcGIS, ArcSDE, ArcIMS, [www.esri.com](http://www.esri.com), and [@esri.com](mailto:esri.com) are trademarks, registered trademarks, or service marks of ESRI in the United States, the European Community, or certain other jurisdictions. Other companies and products mentioned herein are trademarks or registered trademarks of their respective trademark owners.

