

# DigitalGlobe Premium Content Services Offering for ArcGIS

## *US State and Local Government Customers*

DigitalGlobe's world-class global imagery has been used by ArcGIS software professionals around the world to efficiently map, monitor, analyze, and understand geographic aspects of the world.

DigitalGlobe Premium Content Services are available to Esri ArcGIS Online subscribers, making it easy to access premium imagery in ArcGIS Online projects. As an ArcGIS Online customer, you can subscribe to Premium Content Services on an **annual** basis, and it will be made available in ArcGIS applications to named users as a streaming service via your ArcGIS Online for Organizations subscription.

The three types of Premium Content Services being offered are DigitalGlobe's Global Basemap (GBM), FirstLook (FL), and Multispectral.



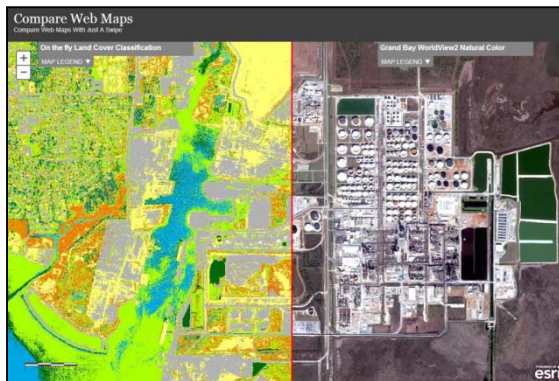
60 cm



120 cm



240 cm



Pre-event



Postevent

## DigitalGlobe Premium Content Services Descriptions

### Global Basemap Premium Service

The Global Basemap Premium Service provides the best available natural-color and panchromatic imagery from DigitalGlobe's multiple satellites. It contains three-band preprocessed, natural-color, and panchromatic imagery with 50 cm resolution. This imagery is available as a cached tile service with extensive coverage of the United States and Canada. This service will be updated regularly to reflect the latest high-quality imagery available from DigitalGlobe's Global Basemap product offering.

### FirstLook Premium Service

The FirstLook Premium Service is used for natural disasters (earthquakes), man-made crises (large accidents, terrorism), political instability (political unrest, civil war), and human interest (the World Cup, Olympics). FirstLook focuses on imagery of events. It will provide both pre- and postevent imagery. This premium information service is populated with imagery when a qualifying event occurs. Imagery is delivered as a cached tile service collected from all available DigitalGlobe sources and provided as color, panchromatic, or color infrared (CIR). It has a 24-hour satellite-to-service turnaround time and a targeted imagery resolution of 60 cm or better.

This service begins the day it is provisioned and is available for a year, acting like an insurance policy. Once a customer has purchased this product and the subscription has been provisioned to the ArcGIS Online purchaser, when a qualifying event occurs during the term, pre-event imagery will be available to the subscriber within 12 hours of the provisioning, and postevent imagery will be available within 12 hours of successful collection from one of DigitalGlobe's satellites. Through this service, users have access to near real-time postevent imagery as well as pre-event imagery for comparison/change analysis.

### Multispectral Premium Service

The Multispectral Premium Service is high-resolution multispectral imagery that allows analytical processing of the content. This data will be capable of supporting a variety of image processing applications such as land-cover classification, change detection, and feature extraction. The Multispectral Premium Service will provide ArcGIS Online users with access to DigitalGlobe eight-band multispectral content that is tailored to their mission. This service will expose the content set most appropriate for the application. The relatively raw data will be exposed through ArcGIS imagery services for exploitation by the ArcGIS Online user's desktop, server, or mobile applications.

The Multispectral Premium Service is delivered along with a digital elevation model (DEM) into an ArcGIS Online instance. It allows access to the original pixel values by providing the pixels in their raw state so that end users can be assured that no information has been changed since it was collected. The customer can leverage advanced raster functionalities in ArcGIS for Server or ArcGIS Online and take advantage of the eight-band imagery for analysis.

## Pricing

These services are offered on an annual subscription basis as a service through the ArcGIS Online platform and are to be accessed by users who have an ArcGIS Online named account.

### Global Basemap Premium Service Pricing US State and Local Government Customers

Licensed Coverage	<50 Named Users	50–200 Named Users	201+ Named Users
<i>Tier definitions can be found on page 4.</i>	Price/Part #	Price/Part #	Price/Part #
Tier 5 Municipal & County Government	\$10,000 137444	\$15,000 137475	\$20,000 137476
Tier 4 Municipal & County Government	\$20,000 137479	\$30,000 137491	\$40,000 137496
Tier 3 Municipal & County Government	\$25,000 137497	\$37,500 137498	\$50,000 137499
Tier 2 Municipal & County Government	\$30,000 137500	\$45,000 137501	\$60,000 137502
Tier 1 Municipal & County Government	\$40,000 137503	\$60,000 137504	\$80,000 137505
Tier 3 State	\$50,000 137506	\$75,000 137507	\$100,000 137508
Tier 2 State	\$75,000 137509	\$112,500 137510	\$150,000 137511
Tier 1 State	\$125,000 137512	\$187,500 137513	\$250,000 137514
USA	\$575,000 137515	\$675,000 137516	\$900,000 137517

- All pricing will abide by the DigitalGlobe Premium Services for ArcGIS Online Terms of Use and End User License Agreement.
- The table above reflects annual subscription pricing.
- The DigitalGlobe Premium Content Services subscriptions are licensed to the subscriber for a clearly defined Primary Area of Interest (PAI) at account activation time. The PAI represents the geographic extents within which the subscriber expects to direct the bulk of service usage. It is the responsibility of the subscriber to ensure that users of the service comply with this constraint. DigitalGlobe reserves the right to interrupt and revoke subscriptions when 10 percent of usage falls outside the PAI.

## Tier Definitions for Global Basemap Premium Services

County and Local Tiers	
Tier Level	Population
Tier 1	250,000+
Tier 2	100,001–250,000
Tier 3	50,001–100,000
Tier 4	25,000–50,000
Tier 5	Up to 25,000

State Tiers		
Tier 3	Tier 2	Tier 1
Connecticut	Alabama	Alaska
Delaware	Arkansas	Arizona
Hawaii	Florida	California
Maryland	Georgia	Colorado
Massachusetts	Illinois	Idaho
New Hampshire	Indiana	Montana
New Jersey	Iowa	Nevada
Puerto Rico	Kansas	New Mexico
Rhode Island	Kentucky	Oregon
Vermont	Louisiana	Texas
Washington, DC	Maine	Utah
West Virginia	Michigan	
	Minnesota	
	Mississippi	
	Missouri	
	Nebraska	
	New York	
	North Carolina	
	North Dakota	
	Ohio	
	Oklahoma	
	Pennsylvania	
	South Carolina	
	South Dakota	
	Tennessee	
	Virginia	
	Washington	
	Wisconsin	
	Wyoming	

## FirstLook Premium Service Pricing

### US State and Local Government Customers

Licensed Coverage	<50 Named Users	50–200 Named Users	201+ Named Users
	Price/Part #	Price/Part #	Price/Part #
Municipal and County Government	\$15,000	\$22,500	\$30,000
	137530	137531	137532
State	\$20,000	\$30,000	\$40,000
	137533	137534	137535
USA	\$75,000	\$112,500	\$150,000
	137536	137537	137538
Global	\$100,000	\$150,000	\$200,000
	137539	137540	137541
Per Event (90 days)	\$25,000	\$37,000	\$50,000
	137669	137670	137701

- All pricing will abide by the DigitalGlobe Premium Services for ArcGIS Online Terms of Use and End User License Agreement.
- The table above reflects annual subscription pricing except for the Per Event category.
- Per Event pricing reflects access to a specific event for 90 days.
- The DigitalGlobe Premium Content Services subscriptions are licensed to the subscriber for a clearly defined PAI at account activation time. The PAI represents the geographic extents within which the subscriber expects to direct the bulk of service usage. It is the responsibility of the subscriber to ensure that users of the service comply with this constraint. DigitalGlobe reserves the right to interrupt and revoke subscriptions when 10 percent of usage falls outside the PAI.

## Multispectral Premium Service Pricing

This imagery is only delivered as part of an Esri and DigitalGlobe Professional Services engagement. Primary factors in pricing the Multispectral Premium Service will be the amount of content licensed, infrastructure costs (servers and storage), volume of expected usage based on the user count, and the duration of the subscription.

Please contact the premium content sales team at [premiumcontentsales@esri.com](mailto:premiumcontentsales@esri.com) if you are interested in or have questions about this product.

## Ordering

For sales questions or quotes on these premium services, call Esri TeleBusiness at 1-800-447-9778, contact your [local office](#), or e-mail [premiumcontentsales@esri.com](mailto:premiumcontentsales@esri.com).

## FAQs

### General

#### **How are DigitalGlobe Premium Content Services being offered to Esri customers?**

Esri offers these services on an annual subscription basis as a service through the ArcGIS Online platform to be accessed by users who have an ArcGIS Online for Organizations named user account.

**Note:** FirstLook Per Event service is an exception and is offered as a 90-day subscription.

#### **How can premium services be shared with named users outside the purchasing organization?**

The purchasing organization can invite the user to be a named user within the organizational account, and that named user can then be invited to the group where the premium services can be shared.

If the purchasing organization does **not** want to invite the user to be a named user within its organizational account, it will need to request a custom quote based on this scenario. Please contact [premiumcontentsales@esri.com](mailto:premiumcontentsales@esri.com) to discuss this type of request so it can be handled appropriately.

#### **Can premium services be shared with ArcGIS Online public accounts?**

No. If you have an organizational account, you can only invite other organizational accounts to join your group.

#### **Can customers use DigitalGlobe Premium Content Services in any application other than ArcGIS Online?**

Access to DigitalGlobe Premium Content Services is achieved by logging in to ArcGIS Online. This login can occur in any ArcGIS application that provides access to ArcGIS Online (e.g., ArcGIS for Desktop and ArcGIS for Windows Mobile).

#### **Can customers access the imagery from DigitalGlobe Premium Content Services when disconnected?**

The ability to extract content that is purchased in ArcGIS Marketplace to a local cache for use in disconnected workflows is not available at this time. This is being looked at by Esri and will be available in a future release.

#### **The DigitalGlobe Premium Content Services named user licensing does not exactly match Esri's named user offerings for ArcGIS Online for Organizations. Why?**

This is because quotes are based on the range of users that specifically want access to the DigitalGlobe Premium Content Services. The number of ArcGIS Online named users must equal or exceed the number of requested users that will access the DigitalGlobe Premium Content Services.

#### **Are customers able to purchase these services using credits?**

No. DigitalGlobe Premium Content Services is provided and priced (in US dollars) on an annual subscription basis.

**Note:** The FirstLook **Per Event** service is an exception and is offered as a 90-day subscription.

### **Can the imagery be shared with others outside the organization?**

Imagery can be shared as a static map image in public-facing websites or chipped into static reports and other documents accompanied by proper DigitalGlobe attribution (see <http://www.digitalglobe.com/usage>). Please refer to DigitalGlobe's Terms of Use document for full description of usage. Specifically, the language below addresses the limitations when making these services available:

DigitalGlobe recognizes that it is the implicit mission of government-affiliated subscribers to deliver ArcGIS powered web maps as a public service. DigitalGlobe Premium Services may be made available for viewing through a government GIS portal provided the following terms are met:

- Imagery and other data may only be shared publicly as a static map or report; web maps, web applications, and dynamic services may not be exposed to the public at any time.
- Proper DigitalGlobe attribution is displayed (see <http://www.digitalglobe.com/usage> for more information) on static maps and reports.
- Imagery and other data may be displayed for viewing purposes only in a non-modifiable format.
- Downloading, caching, scraping, and derivatives are strictly prohibited.
- Imagery and other data may not be made available through a clearinghouse.

## **Global Basemap Premium Service**

### **Does a customer only have access to the provisioned geographic extent, licensed coverage, or the entire Global Basemap?**

DigitalGlobe does not currently have the ability to geofence a user to a specific area. Customers are technically able to access the entire Global Basemap over the United States and Canada, but the license executed between the customer and Esri/DigitalGlobe restricts the licensed geography to the area the customer has purchased, and customers must restrict usage to the subscribed area. Both Esri and DigitalGlobe will monitor usage. Per the terms of use, as follows, customers that exceed their right-to-use geographies may be found in violation of their contract.

*Reasonable Usage Patterns.* The DigitalGlobe Online services subscriptions are licensed to the subscriber for a clearly defined PAI at account activation time. The PAI represents the geographic extents within which the subscriber expects to direct the bulk of service usage. It is the responsibility of the subscriber to ensure that users of the service comply with this constraint. DigitalGlobe reserves the right to interrupt and revoke subscriptions when 10 percent of usage falls outside the PAI.

### **How often is the imagery updated?**

No less than 20 percent of the total area is reimaged every year, but high-interest places may be done more frequently. Customer usage will drive the updates in specific areas of the collection.

### **Can change detection be done with the Global Basemap Premium Service?**

Global Basemap is only provided as a single temporal layer. It can be used to do a simple visual comparison with another independent image layer like the Esri Image Basemap. Both FirstLook and Multispectral provide more robust change detection capabilities.

### **Can the user access the metadata for each image?**

Metadata for each image that comprises the Global Basemap is accessible as an imagery information pop-up window in ArcGIS Online.

## **FirstLook Premium Service**

### **How soon will the FirstLook Premium Service be available?**

This service begins the day it is provisioned and is available for a year, acting like an insurance policy. Once a customer has purchased this product and the subscription has been provisioned to the ArcGIS Online purchaser, when a qualifying event occurs during the term, the subscriber will have pre-event imagery available within 12 hours of the activation, and postevent imagery will be made available within 12 hours of successful collection from one of DigitalGlobe's satellites. Through this service, users have access to near real-time postevent imagery as well as pre-event imagery for comparison/change analysis.

The Per Event service is offered as a 90-day subscription and is ordered at the time an event occurs.

### **What factors might affect the deliverables for the FirstLook Premium Service?**

Event duration and geographic coverage are included at DigitalGlobe's discretion, based on customer input. DigitalGlobe makes its best efforts to include full coverage of an affected area, but coverage may be limited based on weather, access, or time.

### **What activities may result in initiating a FirstLook event?**

FirstLook events are driven by natural or man-made disasters such as fires, storms, and oil spills. Other significant geopolitical activities, like terrorist acts and political unrest, may be selected.

### **What criteria are used to initiate a FirstLook event?**

The event must obviously be visible in imagery; then human impact and size are the main criteria. The Global Disaster and Coordination System (GDACS) is a primary driver behind the selection process. The region of interest and activation duration will be determined by the DigitalGlobe crisis team.

### **How many FirstLook events occur each year?**

FirstLook will typically cover more than 100 separate events each year.

## **Multispectral Premium Service**

### **What is the DigitalGlobe Multispectral Premium Service?**

The DigitalGlobe Multispectral Premium Service allows customers to directly access highly detailed imagery for precise map creation, change detection, feature extraction, and in-depth image analysis within the Esri workflow utilizing Esri's imagery tools. This premium service is available by project-specific order only. Imagery is produced when an order is received and hosted by DigitalGlobe for access via ArcGIS Online. Content for this premium service is provided as full-resolution (50 cm panchromatic and 2 m multispectral) 8-band Basic (1B) Worldview-2 imagery (other DigitalGlobe sensors are also

available on a case-by-case basis). Temporal options are available, which include archive and/or future collections. Access is view-only with metadata (no downloads).

#### Valuable Workflow Integration

- Multitemporal datasets are integrated with software for seamless workflow utility.
- Esri technology enables users to leverage superspectral (8-band) data via the cloud.
- Both archive and new collections are available and delivered directly to the service platform integrated into ArcGIS Online, allowing fast update timelines and availability for analysis.
- Coupling raw imagery with software enables greater flexibility in how to examine the data, supporting better decision making.

#### **Can the Multispectral Premium Service imagery be downloaded for processing locally?**

No, this imagery is provided only as a service. Customers can work with Esri and DigitalGlobe to build applications that perform various image processing tasks dynamically on the imagery service.

#### **Can the output from analysis be shared with others outside the organization?**

Yes, provided that the end consumer can not in any way re-create the original pixel information.

#### **Can users access the higher-resolution panchromatic imagery in addition to the multispectral imagery?**

Yes, the full spectral content of all DigitalGlobe imagery products can be provided as Esri services.

#### **How can this multispectral data be used?**

The applicability of the multispectral content is dependent on the applications that are tied to the data. While it may be possible to do land-cover classification, change detection, and delineation of impervious surfaces, these functionalities will depend on the application that is implemented by the end user to process the data. DigitalGlobe and Esri both offer Professional Services to help in this regard.

## DigitalGlobe Premium Services for ArcGIS Online

### Terms of Use and End User License Agreement

#### 1. ACCEPTANCE OF TERMS.

Use of DigitalGlobe Premium Services ("Services") for ArcGIS Online is subject to the following Terms of Use and End User License Agreement (collectively the "Agreement"). By accessing or using the Services, You acknowledge that You have read, and agree to be bound by the terms and conditions of, this Agreement. DigitalGlobe reserves the right to update this Agreement at any time without notice to you.

#### 2. DESCRIPTION OF SERVICES.

DigitalGlobe provides you with access to a variety of resources, including satellite and aerial imagery data, metadata, documentation, software and map data (collectively "Services"). The Services, including any updates, enhancements, new features, and/or the addition of any new properties, are subject to this Agreement.

*Global Basemap Service.* The Global Basemap Premium Service is an online ArcGIS map service that delivers subscribers a skin of high resolution imagery of the United States and Canada that is geared to deliver a more recent representation of ground features than is available on the Esri World Imagery Basemap service. For locations outside the US and W Europe the service will also deliver finer resolution content than is available on the Esri World Imagery Basemap. The Global Basemap Premium Service is best suited to help subscribers contextualize dynamic or static geospatial data.

*FirstLook Service.* The FirstLook Premium Service is an online ArcGIS map offering that allows subscribers to receive the most imagery in response to natural or man-made disasters. The service will be activated for approximately 100 events annually. The FirstLook Service is best suited for subscribers to rapidly analyze the impacts of the event on the ground as they prepare to position response measures.

*Multispectral Service.* The Multispectral Premium Service is a cost effective and flexible option for subscribers who need to access DigitalGlobe content for a specific project need. The service can be configured to support the workflow of a small group of remote-sensing experts or a large group of users who only need to see the most relevant content for their ongoing operations. The service is best suited for subscribers who have data and infrastructure budget constraints that preclude them for licensing the content in perpetuity from DigitalGlobe.

### 3. LICENSE AND USE LIMITATIONS.

*License.* The Services are for your internal, non-commercial, view and print use only. You may not sublicense, modify, copy, distribute, transmit, display, perform, reproduce, publish, license, create derivative works from, transfer, or sell any data, information, software, products or services obtained from the Services. Unless otherwise agreed in writing, DigitalGlobe imagery products licensed or otherwise accessible through the Services may not be modified, downloaded, extracted or otherwise saved on any system.

*Accommodation for State, Local, Civil Federal Subscribers.* DigitalGlobe recognizes that it is the implicit mission of government-affiliated subscribers to deliver reports and maps to the public. Static maps and reports derived from DigitalGlobe Premium Services may be made available for viewing through government web pages provided the following terms are met:

- Imagery and other data may only be shared publicly as a static map or report; web maps, web applications, and dynamic services may not be exposed to the public at any time
- Proper DigitalGlobe attribution is displayed (see <http://www.digitalglobe.com/usage> for more information) on static maps and reports
- Imagery and other data may be displayed for viewing purposes only in a non-modifiable format.
- Downloading, caching, scraping, and derivatives are strictly prohibited
- Imagery and other data may not be made available through a clearinghouse

*Reasonable Usage Patterns.* The DigitalGlobe Online services subscriptions are licensed to the subscriber for a clearly defined Primary Area of Interest (PAI) at account activation time. The PAI represents the geographical extents within which the subscriber expects to direct the bulk of service usage. It is the responsibility of the subscriber to ensure that users of the service comply with this constraint. DigitalGlobe reserves the right to interrupt and revoke subscriptions when 10 percent of usage falls outside the PAI.

*Reasonable Usage Volumes.* To ensure an optimal service experience for all users, DigitalGlobe will monitor system performance on an ongoing basis. If our monitoring detects patterns of use consistent with denial of service attacks or patterns of use that are inconsistent with nominal usage metrics, DigitalGlobe reserves the right to take mitigating actions to protect the overall stability of the service.

*Restrictions.* You recognize and agree that the Services are the property of DigitalGlobe and contains valuable assets and proprietary information of DigitalGlobe. Accordingly, except as expressly permitted herein, You will not, and will not permit any User or third party to: (a) publish, transmit, reproduce, create derivatives of or otherwise utilize the Services or any data accessible through the Services in any form, format or media; (b) merge the Services or data available through the Services with any other data, information or content; (c) reverse engineer or otherwise attempt to derive the algorithms, databases or data structures upon which the Services are based; (d) distribute, sublicense, rent, lease or loan the Services or data accessible through the Services; (e) use the Services for the business needs of any third person or entity, including without limitation, providing any services to any third parties; (f) remove, bypass or circumvent any electronic or other forms of protection measure included on or with the Services; (g) alter, obscure or remove any copyright notice, copyright management information or proprietary legend contained in or on the Services or any data accessible through the Services; or (h) otherwise use or access the Services for any purpose not expressly permitted under this Agreement, including, without limitation, for commercial purposes. All data accessible through the Services must contain the following copyright

notice conspicuously displayed in connection with such data: "© DigitalGlobe, Inc. All Rights Reserved"

#### **4. PRIVACY AND PROTECTION OF PERSONAL INFORMATION.**

Collection of personal information by DigitalGlobe is governed by DigitalGlobe's privacy statement located at the following address:

<http://www.digitalglobe.com/downloads/legal/DigitalGlobe-Privacy-Statement.pdf>

#### **5. SOFTWARE AVAILABLE THROUGH THE SERVICES OR FOR THE SERVICES.**

Any software that is made available to download from, through or for use with the Services ("Software") is the copyrighted work of DigitalGlobe and/or its suppliers. Use of the Software is governed by the following terms. By downloading, accessing, installing or otherwise using the Software you acknowledge you have read the terms below and agree to be bound by them. If you do not agree to be bound by the following terms, DigitalGlobe is not willing to grant you any rights or licenses to the Software or Services.

The Software is made available solely for use by you. You are granted a non-exclusive, non-transferable, limited license to: (1) download, install, and run the Software solely on computers that are within your control and responsibility and solely for the purpose of accessing and using the Services provided to you by DigitalGlobe. Any reproduction or redistribution of the Software not in accordance with the foregoing is expressly prohibited.

Without limiting the foregoing, copying or reproduction of the Software to any other server or location that allows further reproduction or redistribution of the Software is expressly prohibited unless otherwise agreed in writing by DigitalGlobe.

You recognize and agree that the Software and Services contain valuable assets and proprietary information of DigitalGlobe. Accordingly, you will not, and will not permit any third party to: (1) copy or reproduce the Software or Services; (2) modify, translate, adapt, alter, or create derivative works from the Software or Services; (3) merge the Software or Services or any component thereof with any other software or services; (4) reverse engineer, decompile, disassemble, or otherwise attempt to derive the source code, algorithms, databases, data structures or method of operation of the Software; (5) transfer, distribute, sublicense, rent, lease, sell, or loan the Software, Services or access thereto (or to any component thereof) to any third party; (6) use the Software or Services for the business needs of another person or entity, including without limitation, providing outsourcing, service bureau, commercial hosting, application service provider or on-line services to third parties; (7) remove, bypass or circumvent (or attempt to remove, bypass or circumvent) any electronic or other form of protection measure in place to regulate or control access to the Software or Services; (8) utilize the Software or Services for any commercial purposes; (9) utilize the Software or Services for any purpose that is illegal in any way or that advocates illegal activity; (10) alter, obscure or remove any copyright notice, copyright management information or proprietary legend contained in or on the Software or Services; or (11) otherwise use or access the Software or Services for any purpose not expressly permitted herein.

DigitalGlobe is under no obligation to provide you with any updates, upgrades, new versions, or new releases (collectively, "Updates") to the Software, to correct any defects or errors in the Software, or to otherwise provide support or maintenance for the Software. Any Update of or to the Software provided to you by DigitalGlobe will be treated as part of the "Software" for purposes of these terms. Upon receipt of any Update, you must discontinue your use of any prior version of the Software.

THE SOFTWARE AND SERVICES ARE PROVIDED "AS IS" WITHOUT WARRANTY OF ANY KIND. DIGITALGLOBE EXPRESSLY DISCLAIMS ALL OTHER WARRANTIES, EITHER EXPRESS OR IMPLIED, INCLUDING WARRANTIES OF MERCHANTABILITY OR FITNESS FOR A PARTICULAR PURPOSE.

DIGITALGLOBE DOES NOT WARRANT THAT THE SOFTWARE OR SERVICES WILL BE ACCURATE, CURRENT OR COMPLETE, THAT THE SOFTWARE OR SERVICES WILL MEET YOUR NEEDS OR EXPECTATIONS, OR THAT THE OPERATION OF THE SOFTWARE OR ACCESS TO THE SERVICES WILL BE ERROR FREE OR UNINTERRUPTED. DIGITALGLOBE PROVIDES ALL SOFTWARE AND SERVICES AS A SERVICE TO YOU. SPATIAL, SPECTRAL, AND TEMPORAL ACCURACY CANNOT BE GUARANTEED. DIGITALGLOBE RESERVES THE RIGHT, AT ITS SOLE DISCRETION, TO MODIFY CERTAIN IMAGE CHARACTERISTICS OF THE SERVICES.

## **6. US GOVERNMENT RESTRICTED RIGHTS.**

The Software is a "commercial item" as that term is defined at 48 C.F.R. 2.101, consisting of "commercial computer software" and "commercial computer software documentation," as such terms are used in 48 C.F.R. 12.212 and is provided to the U.S. Government only as a commercial end item. The Services are "commercial technical data" as defined in 48 C.F.R. 12.211. Consistent with 48 C.F.R. 12.211 through 12.212, 48 C.F.R. 227.7202-1 through 227.7202-4, and 48 C.F.R. 252-227-7015, all U.S. Government End Users acquire the Software and Services with only those rights set forth therein.

DIGITALGLOBE MAY MAKE AVAILABLE AS PART OF THE SERVICES OR SOFTWARE, TOOLS AND/OR UTILITIES. DIGITALGLOBE MAKES NO ASSURANCES WITH REGARD TO THE ACCURACY OF THE RESULTS OR OUTPUTS DERIVED FROM THE USE OF SUCH TOOLS AND/OR UTILITIES.

## **7. DOCUMENTS AVAILABLE THROUGH THE SERVICES OR FOR THE SERVICES.**

Permission to use GIS tool user guides, developer guides and DigitalGlobe product and/or service guides (collectively, "Documents") is granted, provided that (1) the below copyright notice appears in all copies and that both the copyright notice and this permission notice appear, (2) use of such Documents is for informational and non-commercial or personal use only and will not be copied or posted on any network computer or broadcast in any media, and (3) no modifications of any Documents are made.

Documents specified above do not include the design or layout of any DigitalGlobe owned, operated, licensed or controlled site. Elements of DigitalGlobe sites are protected by trademark and other laws and may not be copied or imitated in whole or in part. No logo, graphic or image from any DigitalGlobe site may be copied or retransmitted unless expressly permitted by DigitalGlobe.

DIGITALGLOBE AND/OR ITS RESPECTIVE SUPPLIERS MAKE NO REPRESENTATIONS ABOUT THE SUITABILITY OF THE INFORMATION CONTAINED IN THE DOCUMENTS AND RELATED GRAPHICS PUBLISHED AS PART OF THE SERVICES FOR ANY PURPOSE. ALL SUCH DOCUMENTS AND RELATED GRAPHICS ARE PROVIDED "AS IS" WITHOUT WARRANTY OF ANY KIND. DIGITALGLOBE AND/OR ITS RESPECTIVE SUPPLIERS HEREBY DISCLAIM ALL WARRANTIES, WHETHER EXPRESS OR IMPLIED, WITH REGARD TO THIS INFORMATION, INCLUDING ALL WARRANTIES OF MERCHANTABILITY OR FITNESS FOR A PARTICULAR PURPOSE. IN NO EVENT SHALL DIGITALGLOBE AND/OR ITS RESPECTIVE SUPPLIERS BE LIABLE FOR ANY SPECIAL, INDIRECT OR CONSEQUENTIAL DAMAGES OR ANY DAMAGES WHATSOEVER RESULTING FROM LOSS OF USE, DATA OR PROFITS, WHETHER IN AN ACTION OF CONTRACT, NEGLIGENCE OR OTHER TORTIOUS ACTION, ARISING OUT OF OR

IN CONNECTION WITH THE USE OR PERFORMANCE OF INFORMATION AVAILABLE FROM THE SERVICES.

THE DOCUMENTS AND RELATED GRAPHICS PUBLISHED ON THE SERVICES COULD INCLUDE TECHNICAL INACCURACIES OR TYPOGRAPHICAL ERRORS. DIGITALGLOBE AND/OR ITS RESPECTIVE SUPPLIERS MAY CHANGES IN THE PRODUCT(S) AND/OR THE PROGRAM(S) DESCRIBED HEREIN AT ANY TIME.

**8. NOTICES REGARDING SOFTWARE, DOCUMENTS AND SERVICES AVAILABLE THROUGH THE SERVICES OR FOR THE SERVICES.**

IN NO EVENT SHALL DIGITALGLOBE AND/OR ITS RESPECTIVE SUPPLIERS BE LIABLE FOR ANY SPECIAL, INDIRECT OR CONSEQUENTIAL DAMAGES OR ANY DAMAGES WHATSOEVER RESULTING FROM LOSS OF USE, DATA OR PROFITS, WHETHER IN AN ACTION OF CONTRACT, NEGLIGENCE OR OTHER TORTIOUS ACTION, ARISING OUT OF OR IN CONNECTION WITH THE USE OR PERFORMANCE OF SOFTWARE, DOCUMENTS, PROVISION OF OR FAILURE TO PROVIDE SERVICES, OR INFORMATION AVAILABLE FROM THE SERVICES.

**9. ACCOUNT, PASSWORD, AND SECURITY.**

Use of the Services requires the subscriber to have a valid ArcGIS Online Organizational account. Through this account you grant access to one or more user accounts in accordance with the subscription you have purchased through the ArcGIS Marketplace. You are entirely responsible for maintaining the confidentiality of your ArcGIS Online password and account credentials and you are entirely responsible for any and all activities that occur under your account. You agree to notify DigitalGlobe immediately of any unauthorized use of your account or any other breach of security. DigitalGlobe will not be liable for any loss that you may incur as a result of someone else using your password or account, either with or without your knowledge. However, you could be held liable for losses incurred by DigitalGlobe or another party due to someone else using your account or password.

**10. NO UNLAWFUL OR PROHIBITED USE.**

As a condition of your use of the Services, you will not use the Services for any purpose that is unlawful or otherwise prohibited by these terms, conditions, notices or any DigitalGlobe end user license agreement applicable to the Services. You may not use the Services in any manner that could damage, disable, overburden, or impair any DigitalGlobe server, or the network(s) connected to any DigitalGlobe server, or interfere with any other party's use of any Services. You may not attempt to gain unauthorized access to any Services, other accounts, computer systems or networks connected to any DigitalGlobe server or to any of the Services, through hacking, password mining or any other means. You may not obtain or attempt to obtain any materials or information through any means not intentionally made available through the Services.

**11. LINKS TO THIRD PARTY SITES.**

THE SERVICES MAY CONTAIN LINKS TO THIRD PARTY SITES. THE LINKED SITES ARE NOT UNDER THE CONTROL OF DIGITALGLOBE AND DIGITALGLOBE IS NOT RESPONSIBLE FOR THE CONTENTS OF ANY LINKED SITE OR ANY LINK CONTAINED IN A LINKED SITE, OR ANY CHANGES OR UPDATES TO SUCH SITES. DIGITALGLOBE IS PROVIDING THESE LINKS TO YOU ONLY AS A CONVENIENCE, AND THE INCLUSION OF ANY LINK DOES NOT IMPLY ENDORSEMENT BY DIGITALGLOBE OF THE SITE.

**12. CONFIDENTIALITY.**

The Services may include metadata and other confidential and proprietary information of DigitalGlobe ("Confidential Information"). You will not use any Confidential Information for any purpose not expressly permitted hereunder and will disclose Confidential Information only to Your employees who have a need to know for purposes of this Agreement and who are under a duty of confidentiality no less restrictive than Your duty hereunder. You will protect the Confidential Information from unauthorized use, access, or disclosure in the same manner as You protect Your own confidential or proprietary information of similar nature and with no less than reasonable care.

### 13. AUDIT

At DigitalGlobe's request, You will provide assurances acceptable to DigitalGlobe that You are using the Services consistent with the terms of this Agreement. Upon notice, DigitalGlobe may inspect Your records, accounts and books relating to the use of the Services to ensure that the Services are being used in accordance with this Agreement.

### 14. TERM AND TERMINATION

This Agreement remains in full force until the earlier of, the termination or expiration of Your subscription for Services, or the termination or expiration of your ArcGIS Online subscription. DigitalGlobe has the right to terminate this Agreement, effective immediately upon notice to You, if You breach any provision of this Agreement. Upon termination of this Agreement, all rights granted to You hereunder shall immediately cease and You will: (a) discontinue all use of the Services; (b) purge all copies of the data received through the Services or any portion thereof from all computer storage devices or medium on which You have placed or permitted others to place such data; and, if requested (c) give DigitalGlobe a written certification that You have complied with all of Your obligations hereunder.

### 15. WARRANTY

**Limited Warranty; Disclaimer.** DigitalGlobe warrants that, for a period of 30 days after You receive access to the Services, the Services will perform substantially in accordance with the specifications in their applicable product guides. DigitalGlobe's sole obligation and Your entire remedy for breach of the above warranty is for DigitalGlobe, at its sole option and expense, to: (a) repair or replace the non-conforming Services; or (b) refund all fees paid by You for the non-conforming Services. This limited warranty is void if any non-conformity has resulted from any accident, abuse, misuse, misapplication, or modification of or to the Services or any breach of this Agreement. EXCEPT AS EXPRESSLY PROVIDED IN THIS SECTION, ALL SERVICES ARE PROVIDED "AS IS" WITHOUT ANY REPRESENTATIONS OR WARRANTIES OF ANY KIND AND ALL WARRANTIES, WHETHER EXPRESS OR IMPLIED, ORAL OR WRITTEN, ARISING BY LAW OR OTHERWISE, ARE EXPRESSLY DISCLAIMED AND EXCLUDED BY DIGITALGLOBE, INCLUDING, WITHOUT LIMITATION ALL IMPLIED WARRANTIES OF MERCHANTABILITY, TITLE, NON-INFRINGEMENT, AND FITNESS FOR A PARTICULAR PURPOSE. DIGITALGLOBE DOES NOT WARRANT THAT THE SERVICES WILL BE ACCURATE, CURRENT OR COMPLETE, THAT THE SERVICES WILL MEET YOUR NEEDS OR EXPECTATIONS, OR THAT THE OPERATION OF THE SERVICES WILL BE ERROR FREE OR UNINTERRUPTED. DIGITALGLOBE PROVIDES ALL CONTENT AND SERVICES AS A SERVICE TO YOU. SPATIAL, SPECTRAL, AND TEMPORAL ACCURACY CANNOT BE GUARANTEED. DIGITALGLOBE RESERVES THE RIGHT, AT ITS SOLE DISCRETION, TO MODIFY CERTAIN IMAGE CHARACTERISTICS OF THE SERVICES INCLUDING, BUT NOT LIMITED TO, WATERMARKING AND DIMENSIONS.

### 16. LIABILITY LIMITATION.

DIGITALGLOBE SHALL NOT BE LIABLE FOR ANY INDIRECT, CONSEQUENTIAL, EXEMPLARY, PUNITIVE, OR INCIDENTAL DAMAGES, INCLUDING, WITHOUT LIMITATION, LOST REVENUE OR PROFITS, LOST OPPORTUNITY OR LOST DATA OR ACCESS TO DATA, ARISING FROM OR RELATED TO THIS AGREEMENT OR TO THE SOFTWARE OR SERVICES, EVEN IF DIGITALGLOBE HAS BEEN ADVISED OF THE POSSIBILITY OF SUCH DAMAGES. DIGITALGLOBE'S TOTAL CUMULATIVE LIABILITY ARISING FROM OR RELATED TO THESE TERMS OR THE SOFTWARE OR SERVICES IS LIMITED TO THE PRO RATA AMOUNT OF FEES YOU HAVE PAID DIGITALGLOBE FOR THE SOFTWARE OR SERVICES FOR THE 3 MONTH PERIOD PRECEDING THE EVENTS GIVING RISE TO SUCH LIABILITY. CERTAIN JURISDICTIONS DO NOT PERMIT THE LIMITATION OR EXCLUSION OF INCIDENTAL DAMAGES, SO THIS LIMITATION MAY NOT APPLY TO YOU.

## **17. INDEMNIFICATION.**

You will indemnify, defend, and hold harmless DigitalGlobe and its subsidiaries, affiliates and subcontractors, and their respective owners, officers, directors, employees and agents, from and against any and all direct or indirect claims, damages, losses, damages, liabilities, expenses, and costs (including reasonable attorneys' fees) arising from or out of: (1) Your use of the Software or Services for any purpose; (2) Your actual or alleged breach of any provision herein; or (3) damage to property or injury to or death of any person directly or indirectly caused by You. DigitalGlobe will provide You with notice of any such claim or allegation, and DigitalGlobe has the right to participate in the defense of any such claim at its expense.

## **18. OWNERSHIP.**

DigitalGlobe and its suppliers retain all right, title, and interest in and to the Software and Services, all modifications, enhancements, improvements, updates, upgrades or new versions thereof or derived therefrom, and all worldwide intellectual property and proprietary rights therein or relating thereto, including, without limitation, all patents, copyrights, trademarks, trade secrets, moral rights, sui generis rights and other right in databases, and all rights arising from or pertaining to the foregoing rights. Any rights to utilize or access the Software or Services not expressly granted to you in this Section 18 are reserved by DigitalGlobe and its suppliers. Except for the limited rights expressly granted either herein, you will have no right, title or interest (whether by implication, estoppel, or otherwise) in or to the Services. You agree not to challenge DigitalGlobe's rights to, or otherwise attempt to assert any rights in, the Software or Services

## **19. EXPORT CONTROL.**

You will not export or re-export any Software or Services in violation of the U.S. Export Administration regulations or other applicable laws and regulations. You will defend, indemnify, and hold harmless DigitalGlobe from and against all fines, penalties, liabilities, damages, costs, and expenses incurred by DigitalGlobe as a result of any violation of such laws and regulations by You or any of Your agents or employees.

## **20. ADDITIONAL TERMS**

- a.** You acknowledge that any actual or threatened breach of Section 3, 9, 10, or 12 will constitute immediate and irreparable harm to DigitalGlobe for which monetary damages would be an inadequate remedy. Therefore, without limiting any other remedy available at law or in equity, upon any such breach or any threat thereof, DigitalGlobe will be entitled to seek injunctive relief against You as remedy for such breach. To the fullest extent not prohibited by applicable law, any action brought for such relief may be brought by DigitalGlobe upon ex parte application and without notice or posting of any bond, and You expressly waive any requirement for notice or the posting of any bond. If any action is brought to enforce this Agreement, the prevailing party will be entitled to receive its reasonable attorney's fees, court costs, and other collection expenses, in addition to any other relief it may receive.
- b.** Failure to require performance of any provision of this Agreement does not waive DigitalGlobe's right to subsequently require full and proper performance of such provision. If any provision of this Agreement is determined to be invalid or unenforceable, such provision will to the extent possible be deemed amended by limiting and reducing it to the minimum extent necessary to make such provision valid and enforceable and the remaining provisions of this Agreement shall continue to be valid and enforceable and will be liberally construed to carry out the provisions and intent hereof. The invalidity or unenforceability of any provision of this Agreement in any jurisdiction will not affect the validity or enforceability of such provision in any other jurisdiction, nor will the invalidity or unenforceability of any provision of this Agreement with respect to any person affect the validity or enforceability of such provision with respect to any other person.

- c. Neither this Agreement nor any of the rights or obligations hereunder may be assigned or transferred by You (by operation of law or otherwise) without the prior written consent of DigitalGlobe. This restriction on assignment or transfer shall apply to assignments or transfers by operation of law, as well as by contract, merger or consolidation. Any attempted assignment or transfer in violation of the foregoing will be null and void.
- d. This Agreement shall be governed by the laws of the State of Colorado, U.S.A., without regard to conflicts of law principles that would require the application of the laws of any other state or jurisdiction. The United Nations Convention on Contracts for the International Sale of Goods does not apply to this Agreement. Any action or proceeding arising from or relating to this Agreement must be brought in the federal courts or state courts for Boulder County, Colorado, and each party irrevocably submits to the jurisdiction and venue of any such court in any such action or proceeding.
- e. Any notices to DigitalGlobe relating to this Agreement shall be in writing and delivered by personal delivery or U.S. certified mail (return receipt requested) to the address provided below and will be effective upon receipt by DigitalGlobe:

DIGITALGLOBE, INC.  
ATTN: LEGAL DEPT.  
1601 Dry Creek Dr., Suite 260  
Longmont, CO 80503, USA

All notices to You relating to this Agreement shall be delivered by personal delivery, electronic mail, facsimile transmission or by U.S. certified mail (return receipt requested) to the address DigitalGlobe has on file for You, and will be deemed given upon personal delivery, 5 days after deposit in the mail, or upon acknowledgment of receipt of electronic transmission.

## **21. COPYRIGHT NOTICE.**

© 2013 DigitalGlobe, Inc. All rights reserved.

## **22. TRADEMARKS.**

Trademark information is available at the following address:

<http://www.digitalglobe.com/community/downloads/DigitalGlobe-Trademark-Usage-Guidelines.pdf>

Any rights not expressly granted herein are reserved.