

Take Advantage of ArcGISSM Online Today

Using Maps and Tools from ArcGIS Online in ArcGIS Desktop

With just an Internet connection, you can add high-quality imagery, basemaps, and other thematic layers to your own maps as well as use online tools for geocoding and routing. To access the tools that ESRI has made available for you, follow the steps below to sign up for ArcGISSM Online. You'll be able to create better maps and perform your work faster.

What You Will Need

- Internet access
- A Web browser (e.g., Firefox[®] or Internet Explorer[®])
- ArcGIS[®] Desktop 9.3.1

I. Visit ArcGIS Online and Register

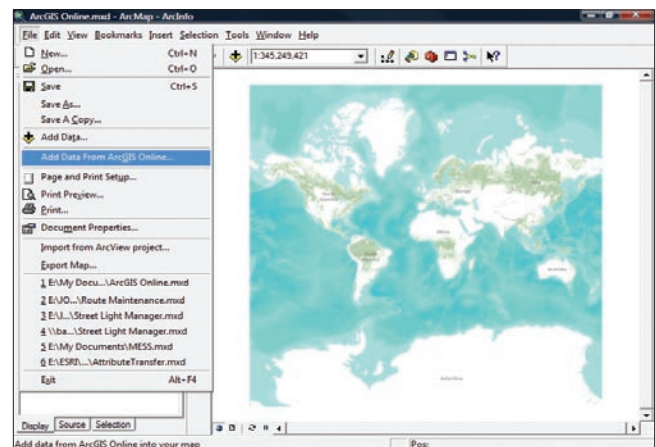
To participate fully in ArcGIS Online, you need to register. Registration is free, and if you already have an ESRI Global Account, you are halfway there!

1. Go to www.arcgisonline.com.
2. Click the Sign In or Sign up now link.
3. Enter your ESRI Global Account information. If you don't have an ESRI Global Account, click Create an account.
4. Accept the terms of use.
5. You are now able to browse the maps and tools that ESRI and your fellow users have made available for you.

To browse map content available from ESRI, enter the keyword ESRI in the search box and click Maps. Once you have found something you would like to use, you will see a list of options for how you can open the content in ArcGIS Desktop.

II. Add Online Maps Directly to ArcMap

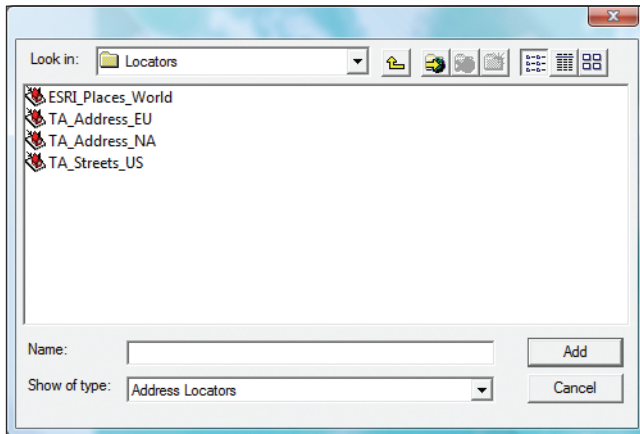
1. Start ArcMap[™]. You can use an existing map or create a new one.
2. From the File menu, click Add Data From ArcGIS Online (or, if you are using ArcGIS 9.3, click Add Data from Resource Center).



3. A Web browser window opens and shows you the basemaps, thematic layers, and imagery you can add directly to ArcMap.
4. Once you have chosen the content you want to use, follow the instructions to add it to your map and you will be taken back to ArcMap to see it.
5. Zoom in and out to see more or less detail, respectively. Each map on ArcGIS Online has been created with scale dependencies.

III. Add Online Tools to ArcMap

1. If not already open, start ArcMap. You can use an existing map or create a new one.
2. From the Tools menu, point to Geocoding and choose Geocode Addresses.
3. From the dialog box that appears, click Add.
4. Under the Look in section in the new dialog box, select GIS Servers and double-click Add ArcGIS Server.
5. Choose Use GIS Services and click Next.
6. Enter <http://tasks.arcgisonline.com/arcgis/services> and click Finish.
7. Select the arcgis on tasks.arcgisonline.com connection on the dialog box and click Add.
8. Double-click the Locators folder, choose the locator you want to use, then click Add.



Note: The following table describes the locator options that are available:

| | |
|-------------------|---|
| ESRI_Places_World | ESRI World Places—Matches to countries, states and provinces, administrative areas (e.g., counties), cities, landmarks, water bodies, and more |
| TA_Address_EU | Tele Atlas Europe (Andorra, Austria, Belgium, Denmark, Finland, France, Germany, Gibraltar, Ireland, Italy, Liechtenstein, Luxembourg, Monaco, the Netherlands, Norway, Portugal, San Marino, Spain, Sweden, Switzerland, United Kingdom, and Vatican City)—Matches to street address, street name, city, and postal code |
| TA_Address_NA | Tele Atlas North America (United States and Canada)—Matches to street address point, street address, ZIP Code, ZIP+4, and city/state |
| TA_Streets_US | Tele Atlas United States—Matches to street address only |

9. Click OK, and you will see a dialog box asking for the data you want to geocode.
10. Click the folder icon at the top of the dialog box to browse to your text file, Excel spreadsheet, or geodatabase table.
Note: There are a few things to keep in mind when working with Excel or text data formats in ArcGIS, such as the importance of properly formatting your data. For more information, refer to the online help topic Working with Microsoft Excel files in ArcGIS at http://webhelp.esri.com/arcgisdesktop/9.3/index.cfm?id=759&pid=745&topicname=Working_with_Microsoft_Excel_files_in_ArcGIS (the same rules apply to text data).
11. Define the address input fields and output and click OK to follow the normal geocoding workflow as if you were using a file-based locator.

For More Information

ArcGIS Online Help

www.arcgisonline.com/help/help.htm

ArcGIS Online Common Questions

www.esri.com/software/arcgis/arcgisonline/common-questions.html

ArcGIS Online Blog

<http://blogs.esri.com/Support/blogs/arcgisonline>

