

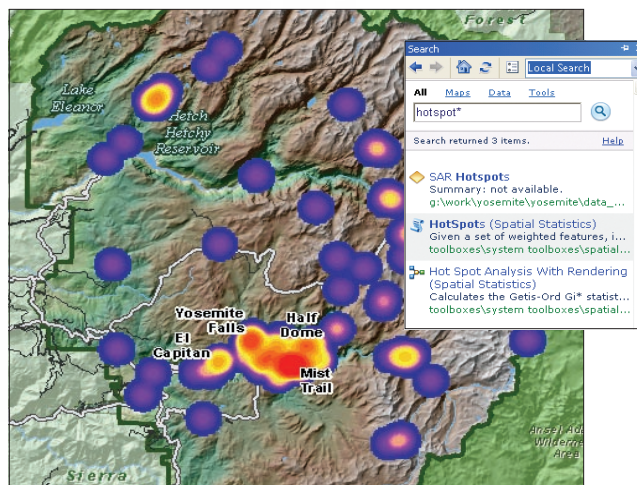
What's Coming in ArcGIS® 10

Transform the Way You Use and Share GIS

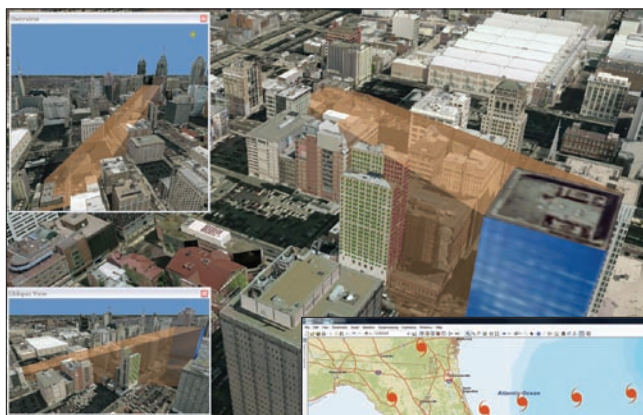
ArcGIS® 10 helps you be more productive with your work and makes geographic information system (GIS) technology available everywhere. Whether you are using ArcGIS on the desktop or in a mobile or server environment, the new enhancements will improve how geographic information is leveraged throughout your organization. ArcGIS 10 functionality will be accessible via Web-extended desktops and hosted Web applications and in the cloud.

Perform Your GIS Work Faster

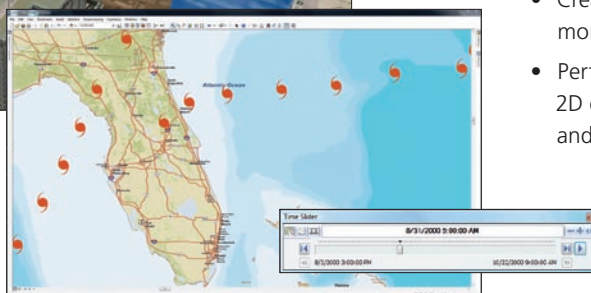
- Search by keywords or data types to find data and maps quickly.
- Easily find symbols to use in your maps and tools.
- Simplify map creation and production with new streamlined, sketch-based desktop and Web editing.
- Save time through faster drawing and smoother panning due to improved cache generation and optimized Web graphics.



Quickly and easily search for maps, data, and tools in ArcGIS 10.



As a full 3D GIS, ArcGIS 10 offers 3D data models, editing, analysis, and visualization.



Display and animate temporal datasets.

Powerful Spatial Analysis

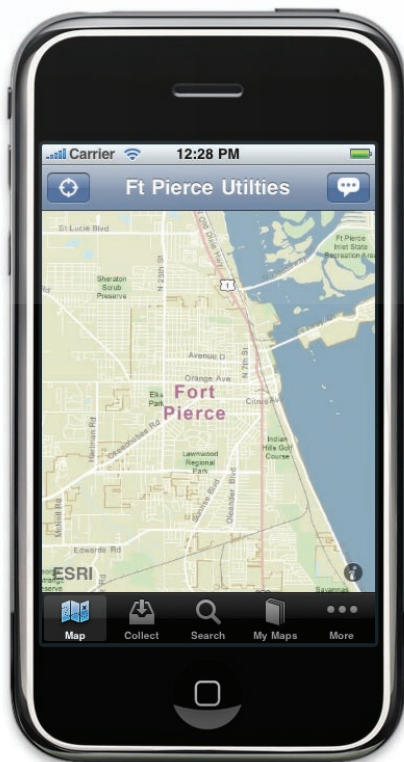
- Automate common tasks and analyses with Python® scripting.
- Combine ArcGIS with other scientific programming to reveal powerful answers in your data.
- Take advantage of new analysis tools such as location allocation.
- Create, manage, and visualize time-aware data for more in-depth analysis.
- Perform in 3D virtually everything you can do in a 2D environment—modeling, editing, visualization, and analysis.

Improved Access to Imagery

- Use and manage imagery more efficiently on the desktop and the server.
- Experience faster performance with accelerated image display.
- Save time by using the image analysis window for image interpretation and processing.
- Easily manage massive image collections with dynamic mosaicking and on-the-fly processing.
- Efficiently serve dynamic image mosaics to many applications.



At ArcGIS 10, on-the-fly image processing is supported on ArcGIS Desktop in addition to ArcGIS Server.



ArcGIS 10 makes it easier to take GIS into the field.

New Ways to Share

- Increase collaboration via tight integration with ArcGIS online search and share capabilities.
- Easily create and distribute projects that may include data, layers, maps, tools, scenes, globes, diagrams, and add-ins.
- Discover and organize geographic data throughout the enterprise via the new Search service in ArcGIS Server.

GIS in the Field

- Extend mobile projects to in-vehicle and tablet-based PCs using the ArcGIS Mobile customizable, out-of-the-box application.
- Access a new iPhone® mapping application directly from the Apple® iTunes® App Store.
- Build your own iPhone applications using the software development kit.



See demo videos and learn more about ArcGIS 10 at www.esri.com/whatscoming.