

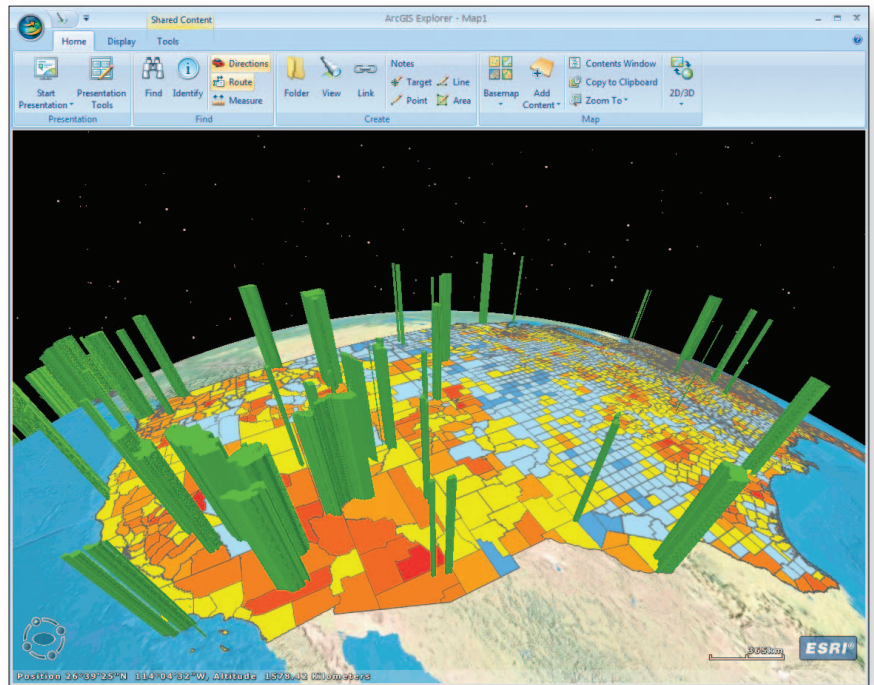
ArcGIS® Explorer—Deliver Your GIS to Everyone

ArcGIS® Explorer offers an easy way to view, share, and present your authoritative geographic information system (GIS) data. It's a free GIS viewer that connects directly to a variety of ready-to-use ArcGIS™ Online basemaps and layers and enables you to add your own map services or local data. You can also extend ArcGIS Explorer with your own geoprocessing tools to deliver GIS capabilities to people who aren't GIS experts.

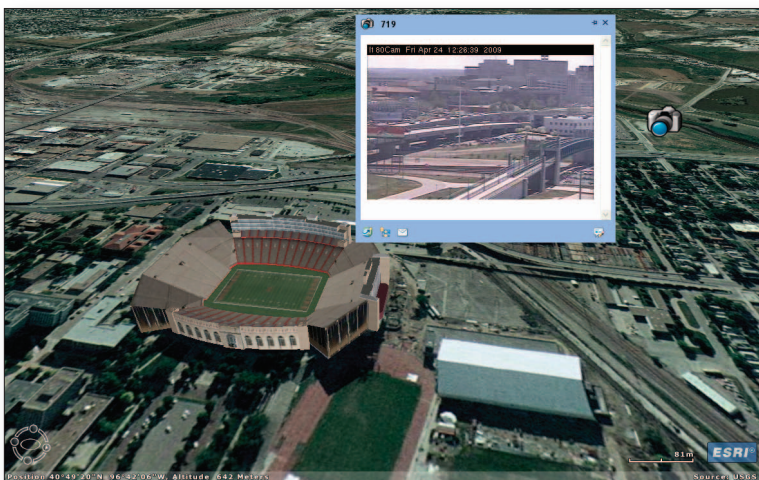
Present Your Authoritative Data in an Engaging Way

ArcGIS Explorer includes intuitive mapping and presentation tools that help you make geospatial information visually compelling and easy to understand. It is designed to work directly with maps and layers authored using ArcGIS Desktop and published via ArcGIS Server or shared as layer files or layer packages.

- Easily use and learn ArcGIS Explorer, which features an intuitive ribbon-based user interface.
- Quickly switch between 2D and 3D display modes.
- Integrate GIS content with pop-ups, photos, videos, documents, and more.
- Change basemaps on the fly while maintaining your operational layers.



ArcGIS Explorer gives you an easy way to view and share your authoritative spatial data.



Integrate pop-ups, photos, videos, and other content into your maps.

ArcGIS Explorer Makes Data Integration Easy

ArcGIS Explorer includes ArcGIS Online services, which provide access to high-resolution satellite imagery for the entire world, worldwide street data, terrain, boundaries and labels, political maps, and physiography. Combine these with your own map services and local data to create maps that give you a more complete picture of your area of interest.

With ArcGIS Explorer there's no need for data conversion—you can use a wide variety of data and web services directly in their native formats.

Supported data formats include

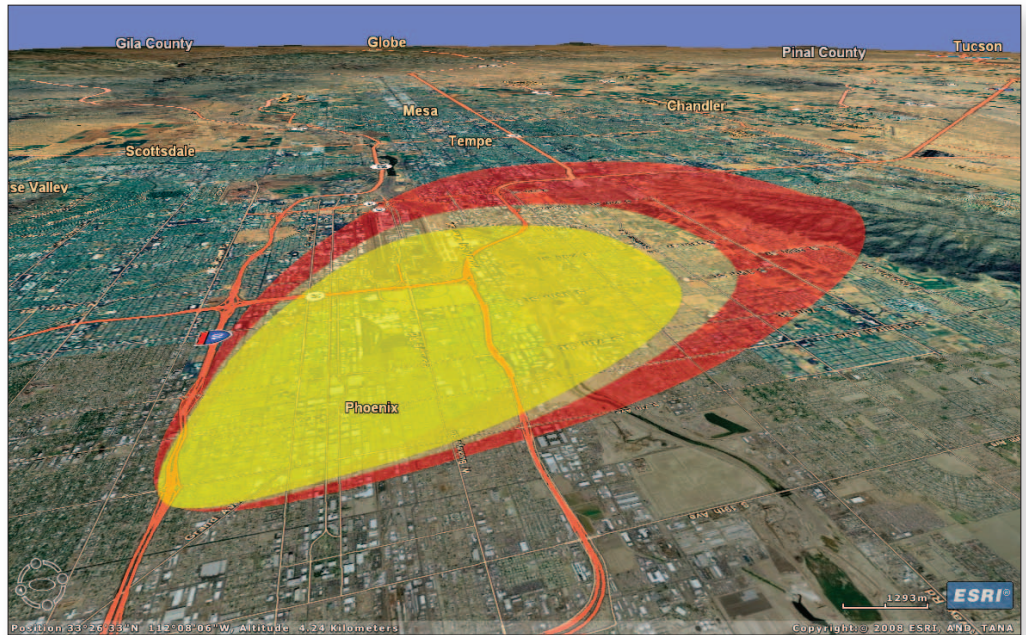
- Geodatabases
- Shapefiles
- Raster images (JPEG 2000, GeoTIFF, MrSID®, and many more)
- KML/KMZ

ArcGIS Explorer also supports ArcGIS layer files and layer packages, which encapsulate ArcGIS Desktop cartography along with data.

For more information about ArcGIS Explorer, visit esri.com/arcgisexplorer.

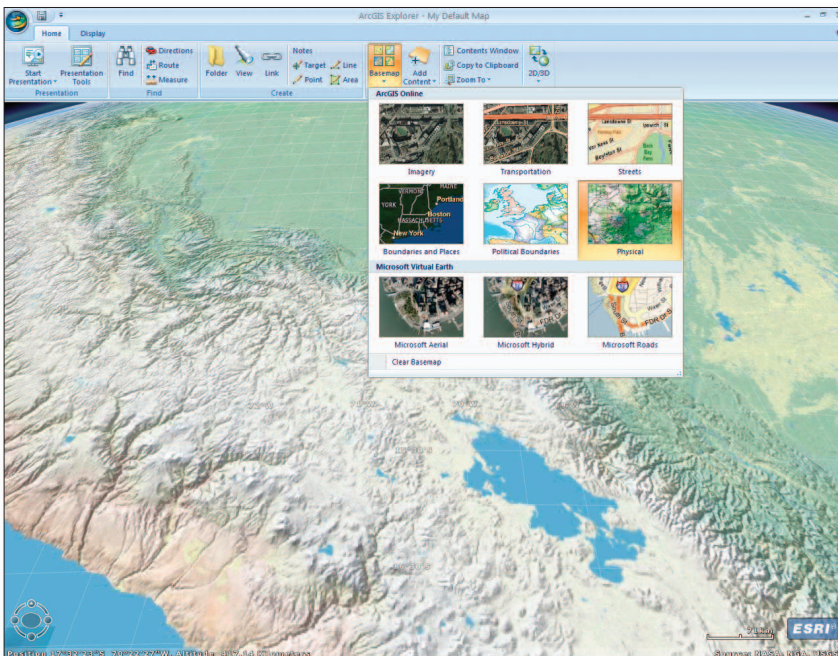
Customize ArcGIS Explorer to Fit Your Needs

You can easily customize ArcGIS Explorer to meet specific user needs or workflows using application configurations. These can be stored and managed on your own networks, making ArcGIS Explorer the ideal client for sharing spatial information throughout your enterprise. In addition, the ArcGIS Explorer Software Development Kit (SDK) provides a powerful object model that lets .NET developers create new tools to extend its capabilities. The ArcGIS Explorer SDK is also available as a free download.



ArcGIS Explorer lets you deliver geoprocessing capabilities to people who aren't GIS experts.

Free Download
esri.com/arcgisexplorer



Change your basemap on the fly by selecting from a variety of prepublished maps.



380 New York Street
Redlands, California
92373-8100 USA

Call Esri at
1-800-447-9778.

Send e-mail inquiries to
info@esri.com.

Visit Esri's web page at
esri.com.

Copyright © 2011 Esri. All rights reserved. Esri, the Esri globe logo, the ArcGIS Explorer logo, ArcGIS, @esri.com, and esri.com are trademarks, registered trademarks, or service marks of Esri in the United States, the European Community, or certain other jurisdictions. Other companies and products mentioned herein may be trademarks or registered trademarks of their respective trademark owners.

116410 INLD SM 4/11tk

For more information about ArcGIS Explorer, visit esri.com/arcgisexplorer.