

# Agenda

- What is GIS?
- GIS and SAP
- Real Examples

# Life Without GIS



My Stuff

My Paper Maps

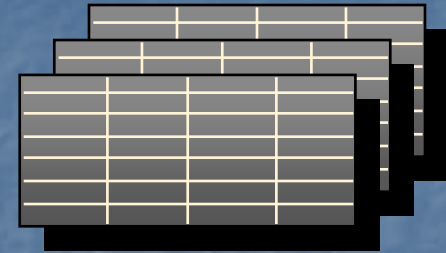


# Three Elements of a GIS

## Features



## Attributes



### Feature Characteristics

Building type  
Appraised Value  
Parcel owner

## Behavior

Display

Query

Analysis

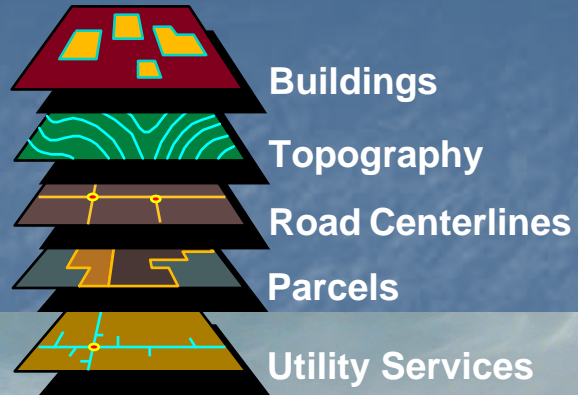
Unimproved lots are  
displayed in blue

What parcels  
adjacent to Main  
St. are also zoned  
mixed use?

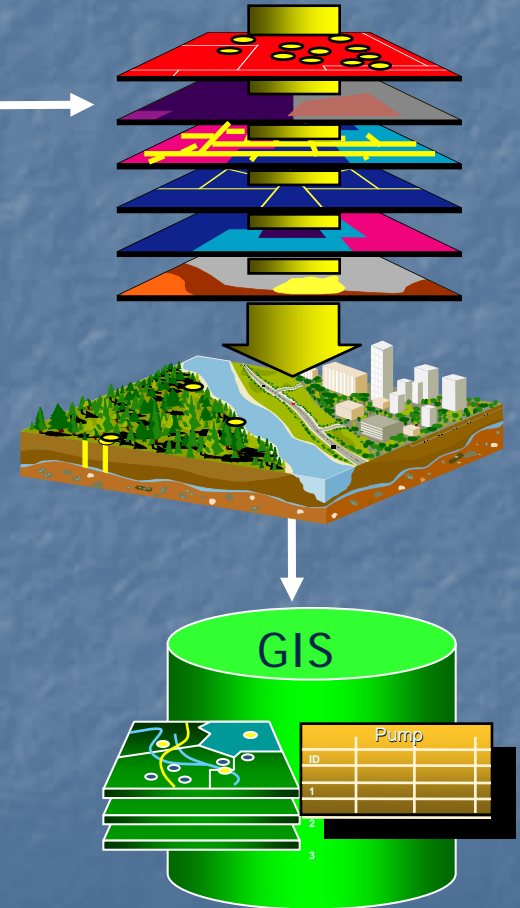
What parcels are  
adjacent to Main  
Street?



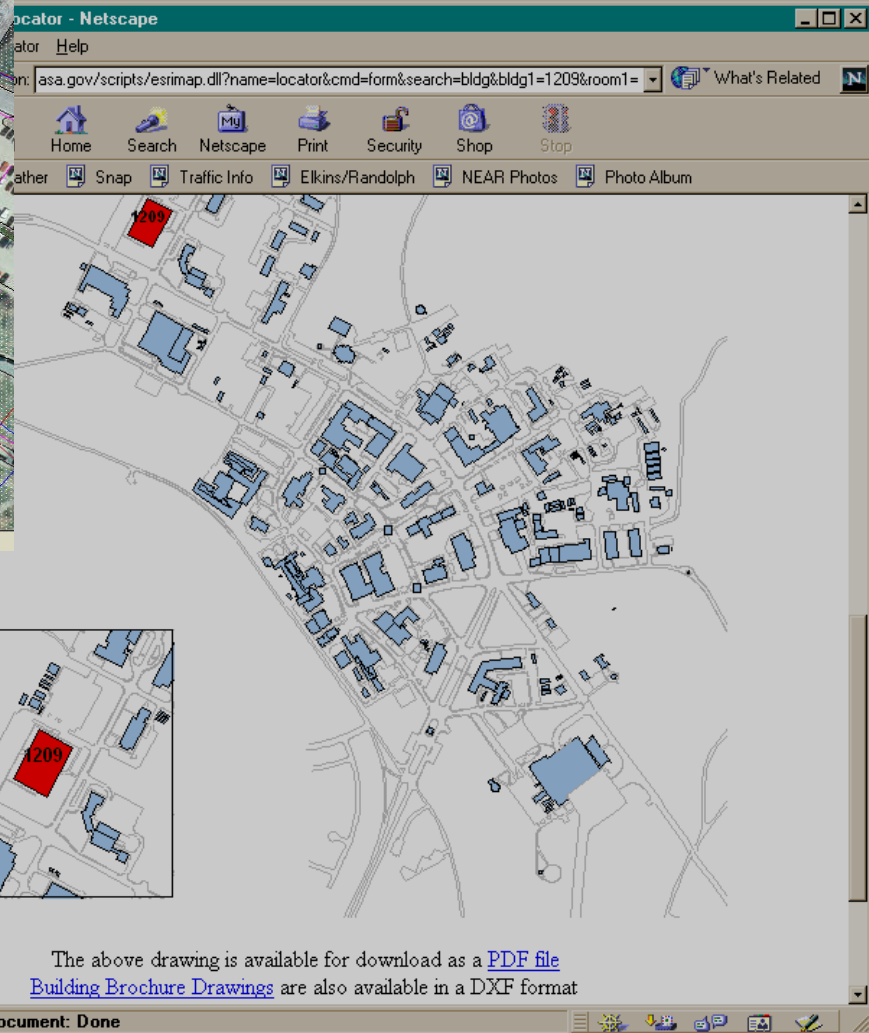
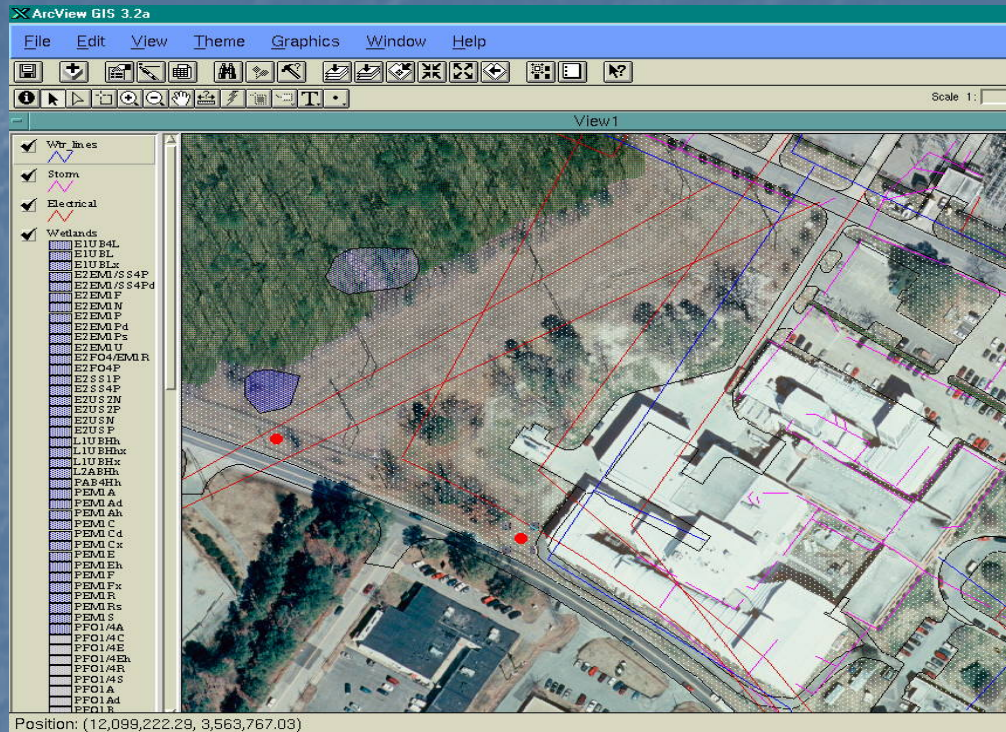
# Features



- A GIS models reality digitally
- Abstraction of real-world features
- Communicates locational & descriptive info
- Portrays spatial relationships



# Features: Facility Data -NASA



~100 Layers

The above drawing is available for download as a [PDF file](#)  
[Building Brochure Drawings](#) are also available in a DXF format



The screenshot displays a network management application. The top window, titled '1209T', shows a floor plan of a building with rooms 800 through 810. Each room is represented by a grey rectangle with small red and blue squares indicating network ports. Room 800 is the central, largest room. Rooms 801 through 810 are arranged around it. The bottom window, titled 'Database', shows a table with columns: Slot, Port, Host, Ip\_address, Cpu\_ecn, Mem\_ecn, and User. The table contains three rows of data, all highlighted in yellow. The first row shows Slot 6, Port 8, Host Savage, Ip\_address 128.155.34.16, Cpu\_ecn 1875992, Mem\_ecn 1876017, and User Mary E Ingham. The second row shows Slot 8, Port 8, Host, Ip\_address, Cpu\_ecn, and Mem\_ecn, but the User field is empty. The third row shows Slot 19, Port, Host, Ip\_address, Cpu\_ecn, and Mem\_ecn, but the User field is empty. The taskbar at the bottom shows various icons and the system clock 12:29 PM.

1209T

807 806 805 804

808

803

800

802

809

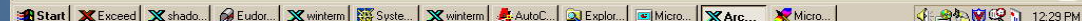
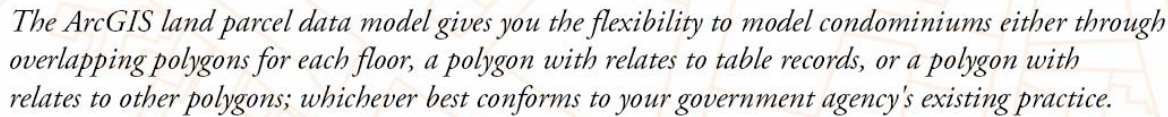
810

801

Database

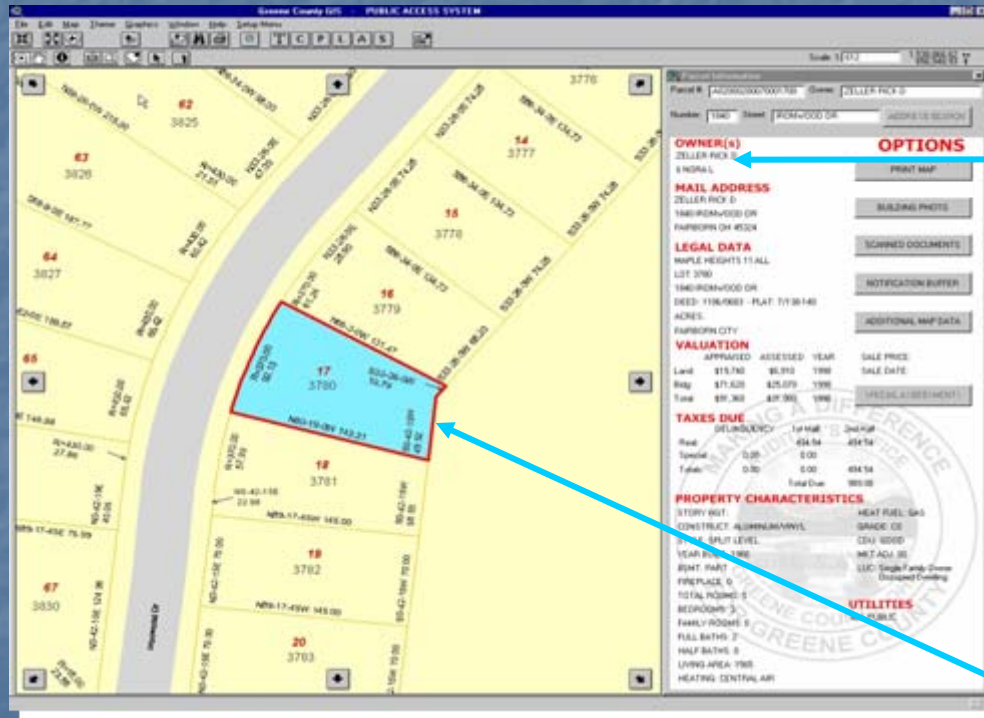
Slot	Port	Host	Ip_address	Cpu_ecn	Mem_ecn	User
6	8	Savage	128.155.34.16	1875992	1876017	Mary E Ingham
8	8					
19						

Explorer | Micro | Arc | Micro | 12:29 PM

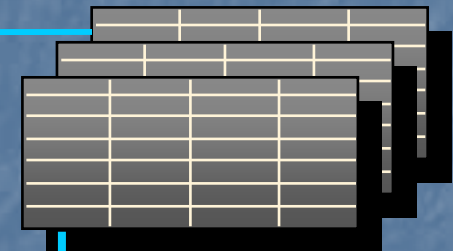


# Attributes

- Attributes are information about a feature
  - Feature characteristics
  - Display and label characteristics



## Attributes



Feature Characteristics

Building type

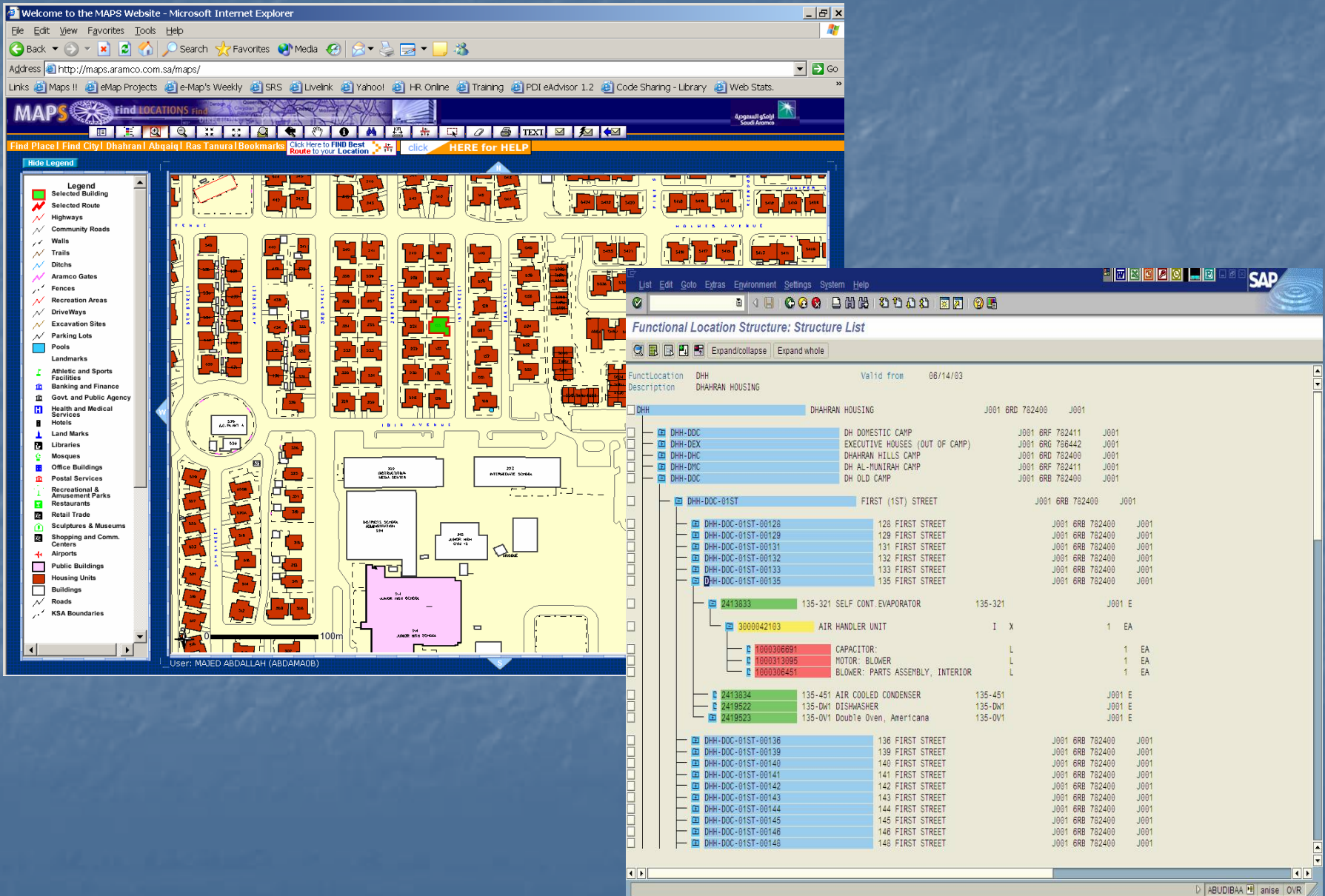
Appraised Value

Parcel owner

Display and Label  
Characteristics

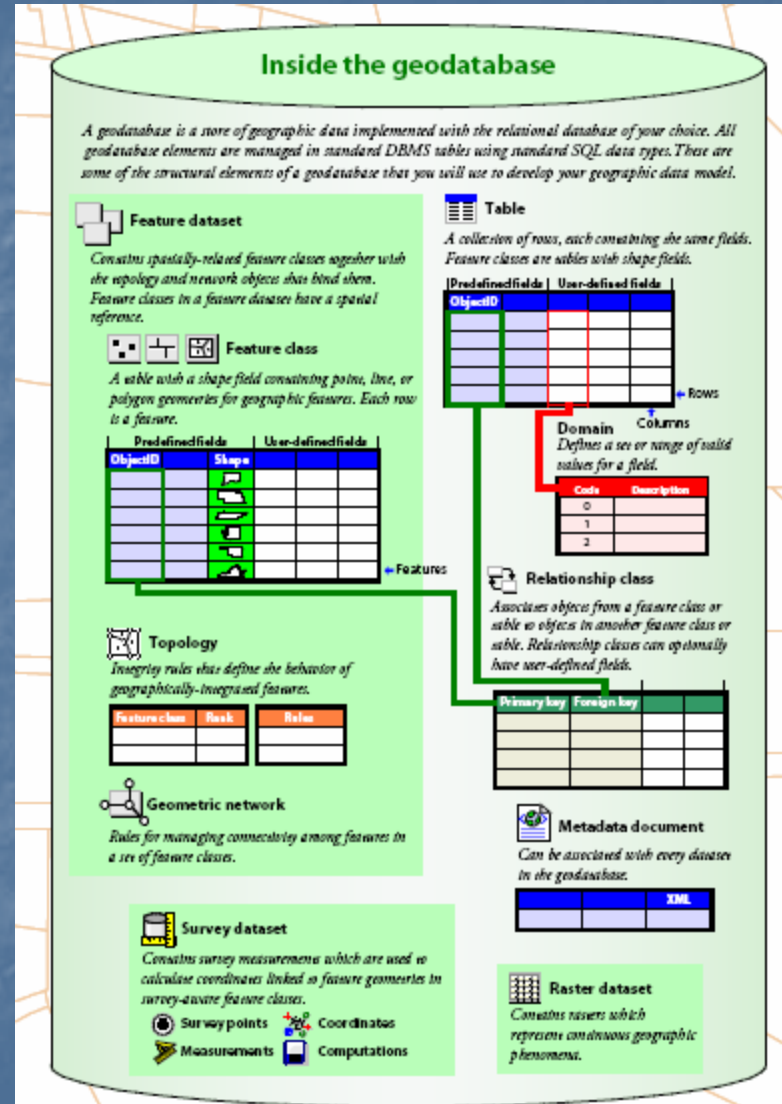
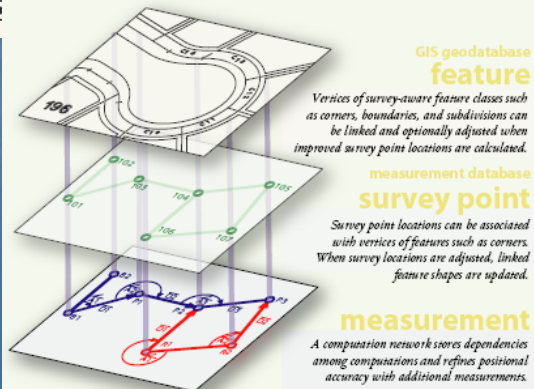
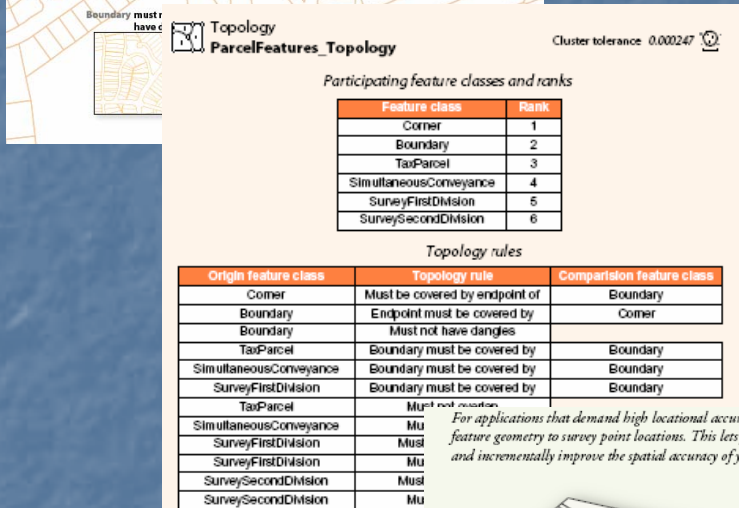
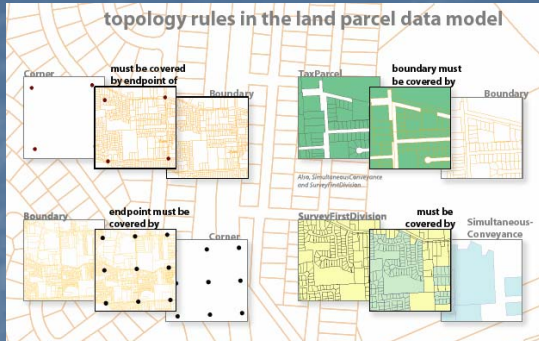


# Attributes

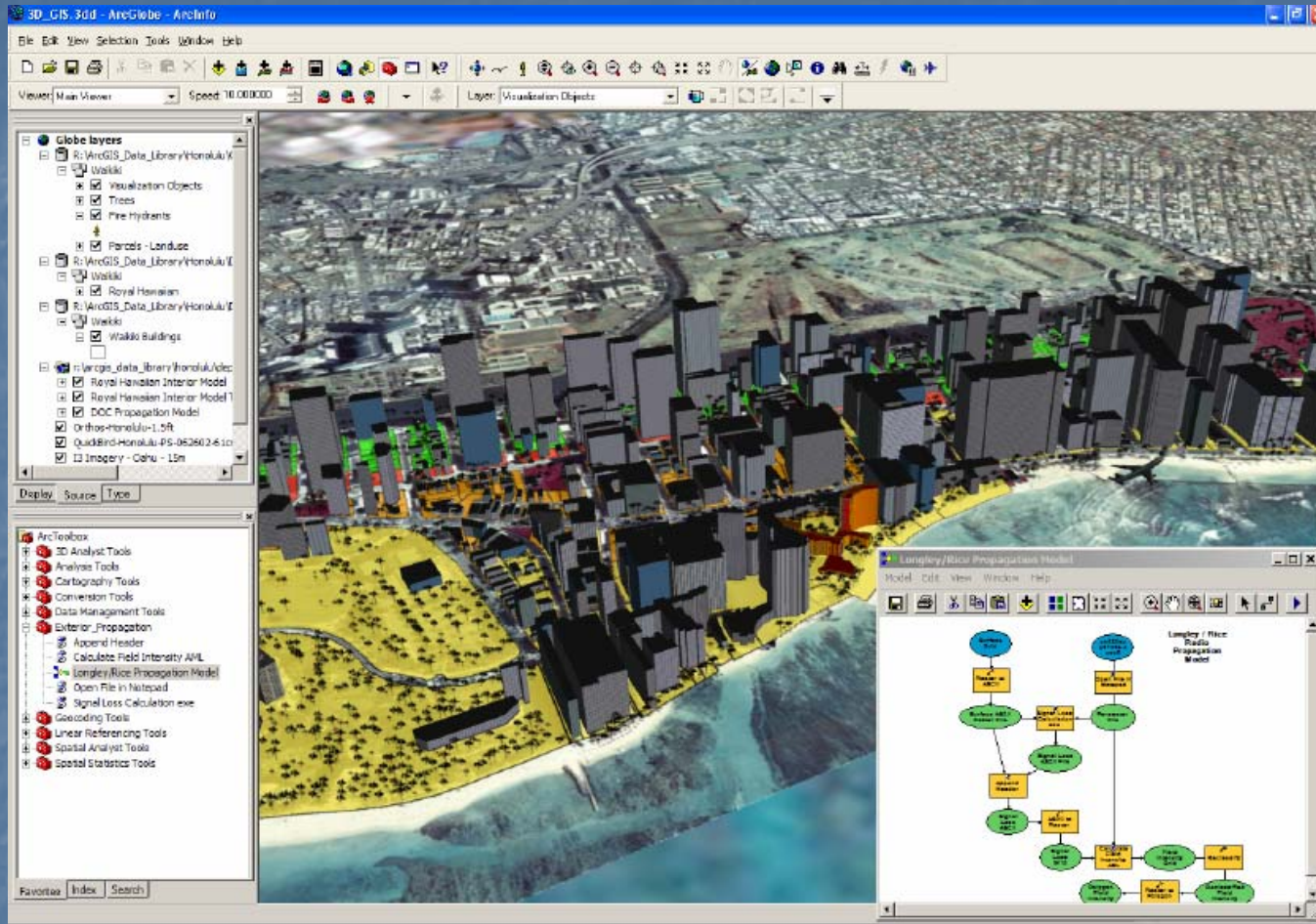




# Behavior



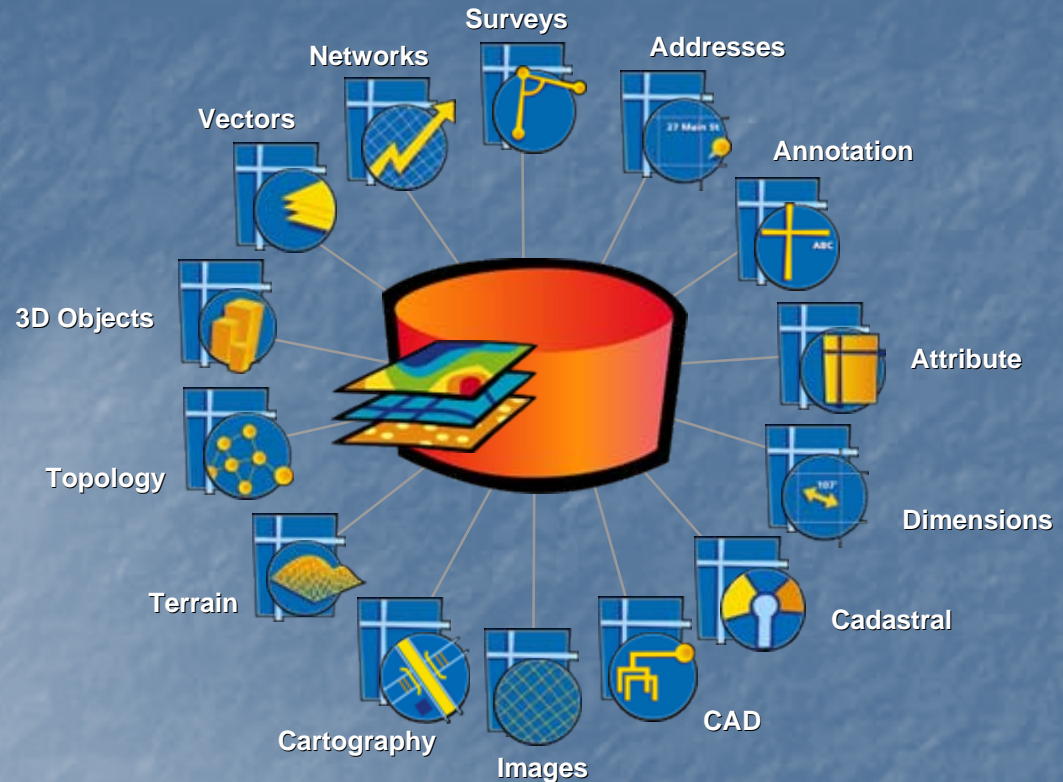
# Behavior





# Spatial Data Management

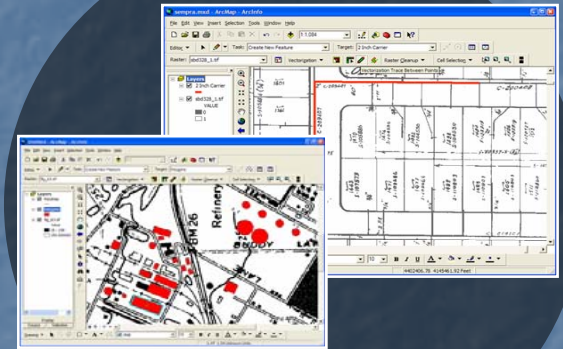
- Organization and management of spatial information
  - Accommodate all spatial data types
  - Integrate all spatial data types
  - Manage all spatial data types
    - Data Creation
      - Rules and Behavior
      - Metadata
    - Data Maintenance
      - Editing tools
        - GIS
        - CAD
        - Etc ..
      - Editing workflows
        - Model Builder
        - PLTS
    - Data sharing and distribution
      - Spatial data repositories
      - Replication, Versioning, Check in/out
  - Persist all spatial types
    - Oracle, SQL Server, DB2, Access, Files



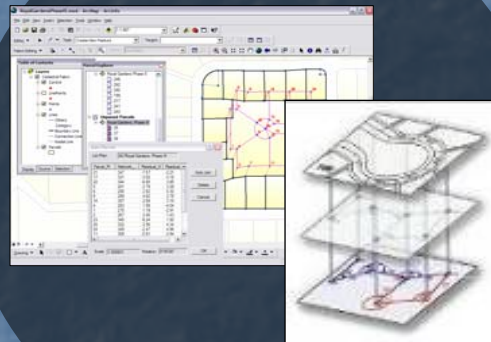
***Geodatabase: Object-relational information model responsible for managing all geographic data types and their associative rules and behaviors.***

# Spatial Data Management : CAD Data Type

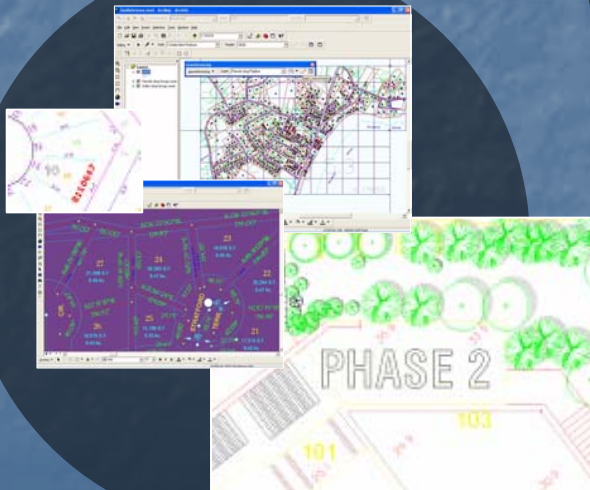
## CAD Editing



## CAD Conversion



## .CAD Rendering



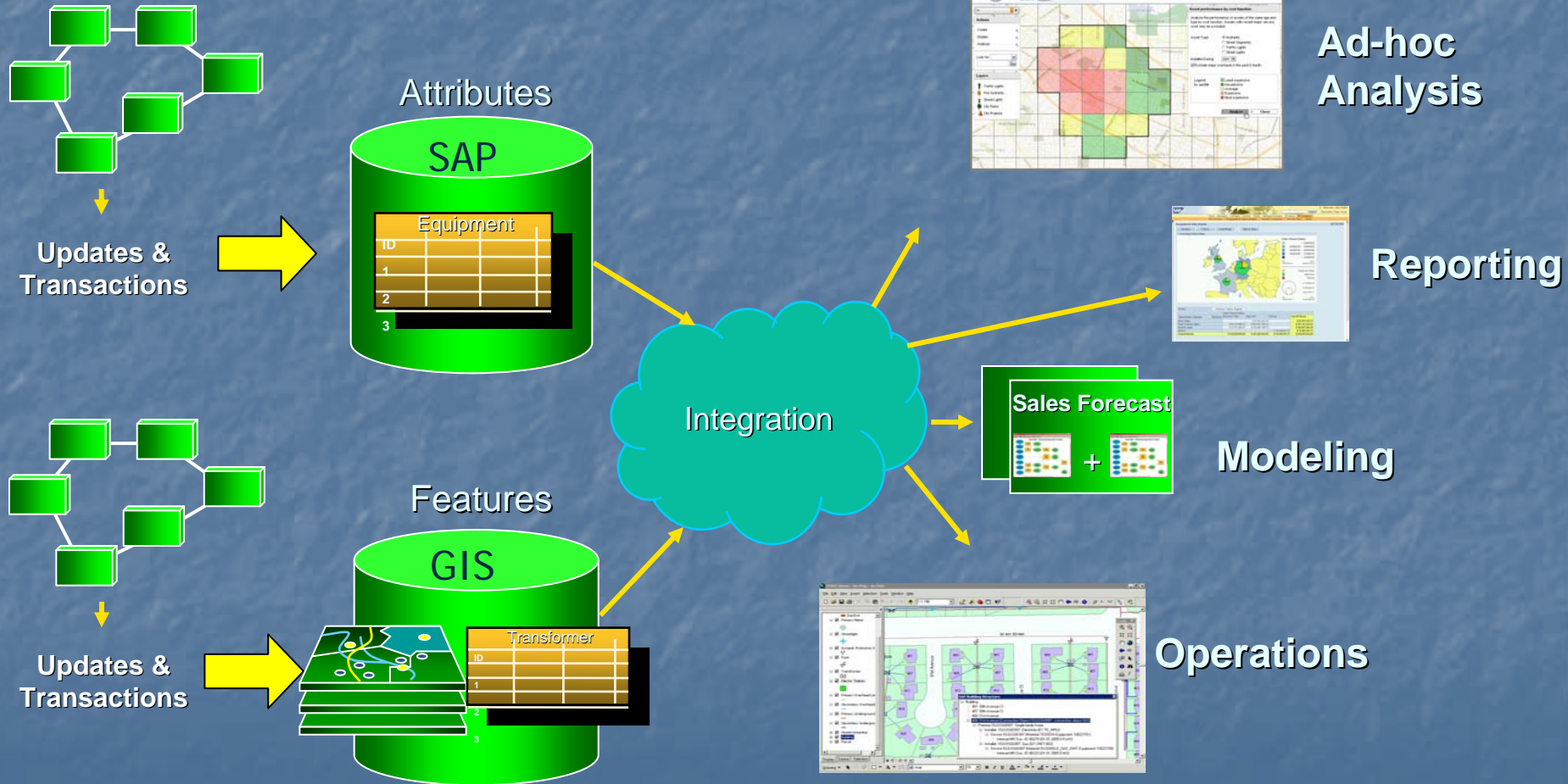


# Spatial Data Management : Workflow



# GIS and SAP

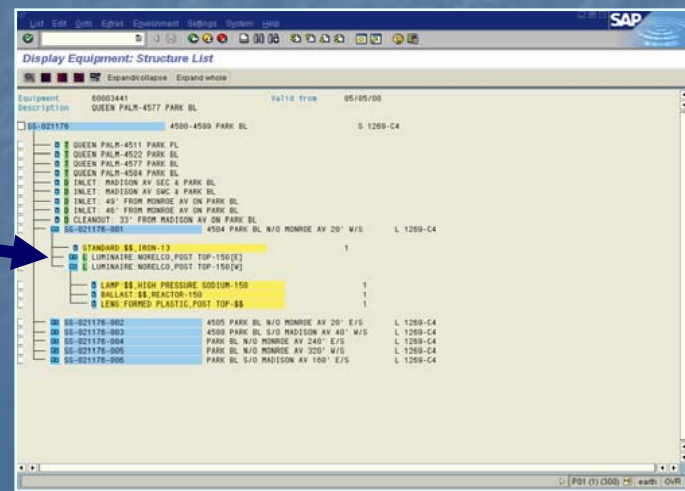
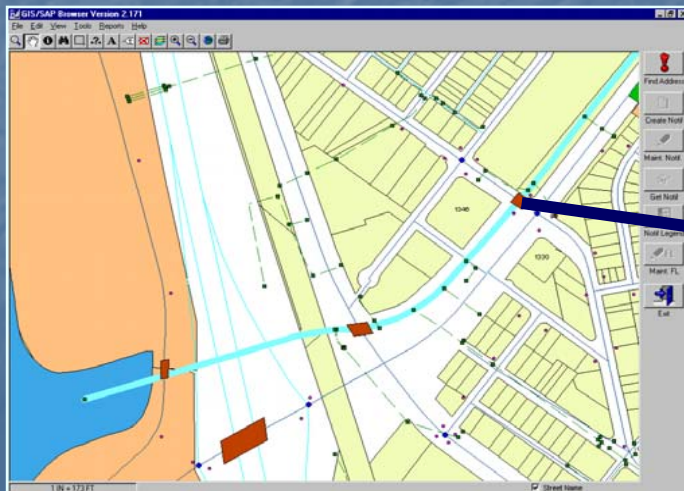
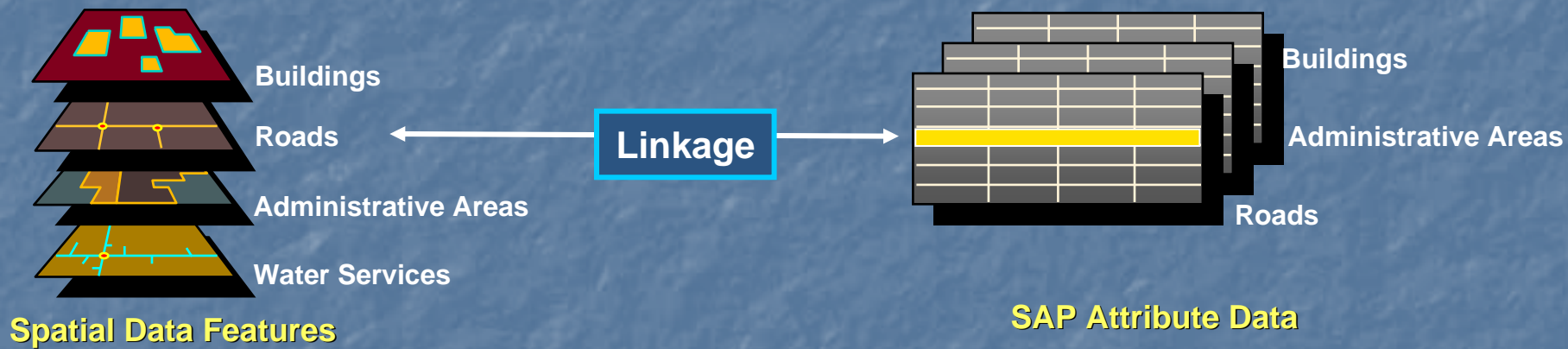
## Integrated Platforms





# Linking Geospatial Features and SAP Attributes

Each geographic feature has a record in an associated attribute table within SAP



# Integration Scenarios

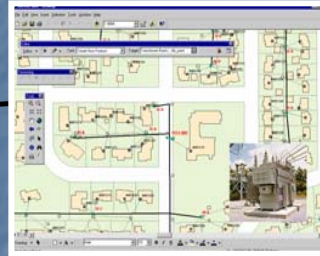
## Real Property

Parcel  
Building  
Utilization  
*Spatial Reference*



## Asset Management

Equipment ID  
Account depreciation  
*Spatial Reference*



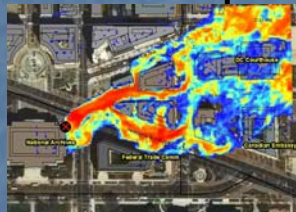
## Maintenance

Work order  
Equipment history  
*Spatial Reference*



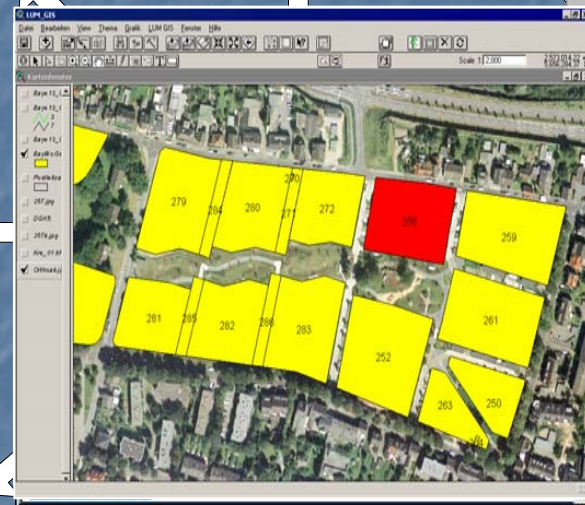
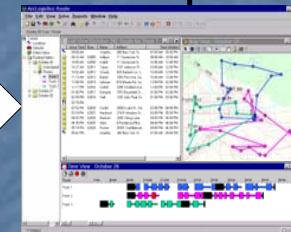
## Environmental Health And Safety

Source  
Material Type  
Reporting  
*Spatial  
Reference*



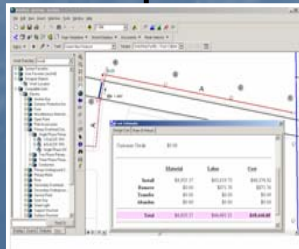
## Logistics

Inventory ID  
Routing  
*Spatial  
Reference*



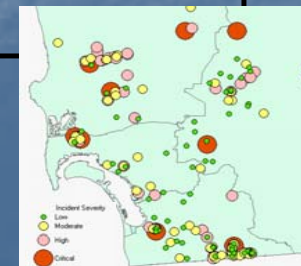
## Projects

WBS #  
Network  
*Spatial  
Reference*



## Incident Management

Incident #  
Incident Type  
*Spatial  
Reference*

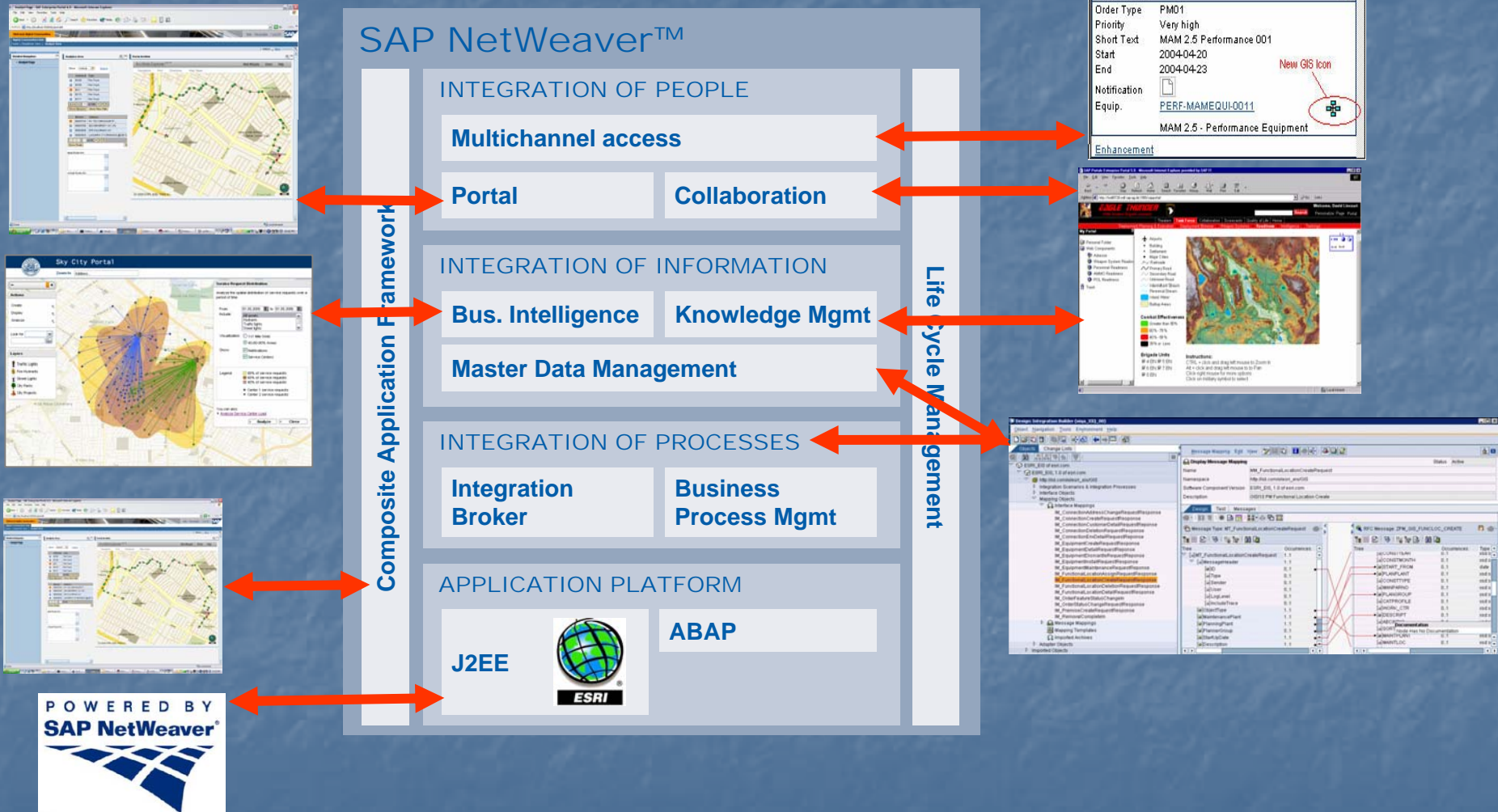


## Mobile



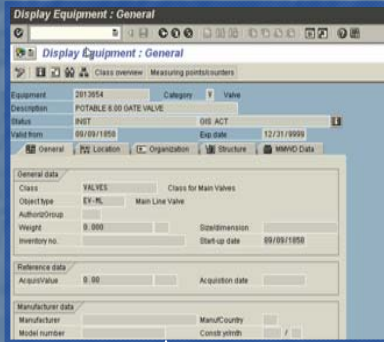


# SAP NetWeaver Integration Points

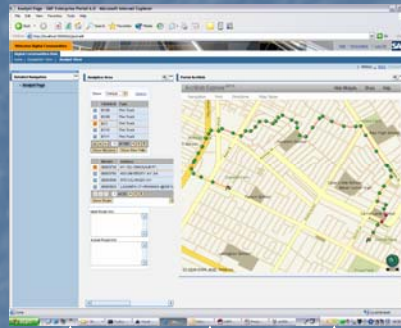


# Three Different Types of Users

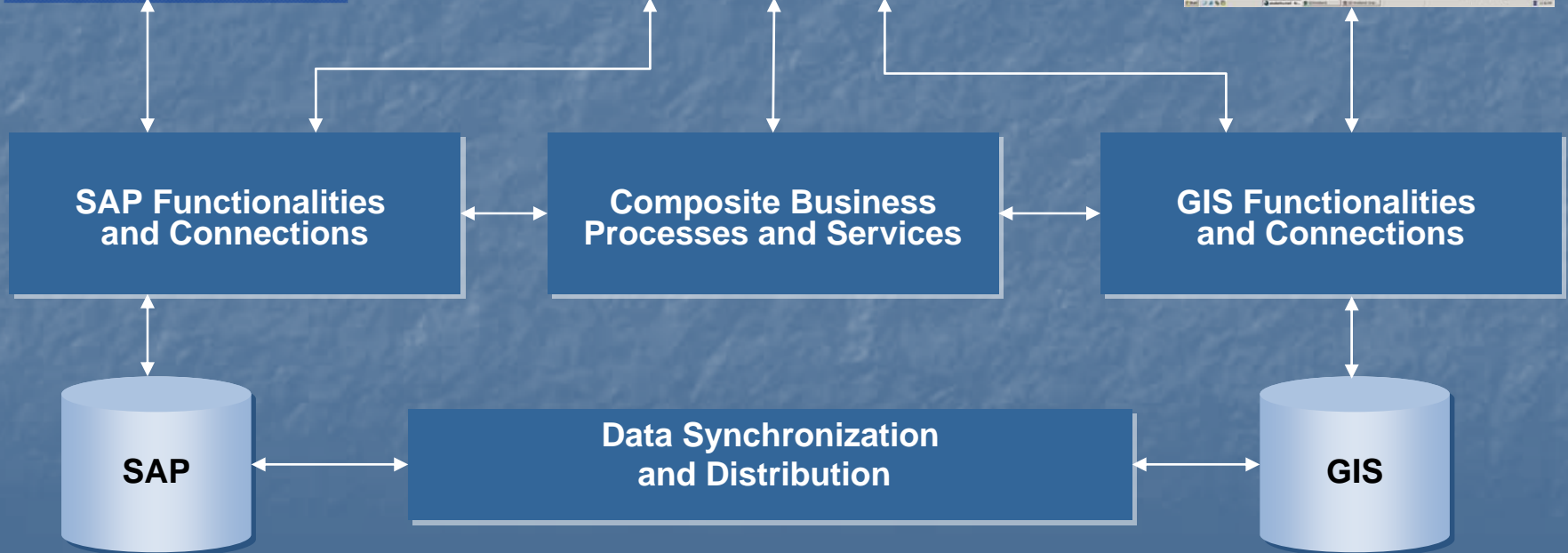
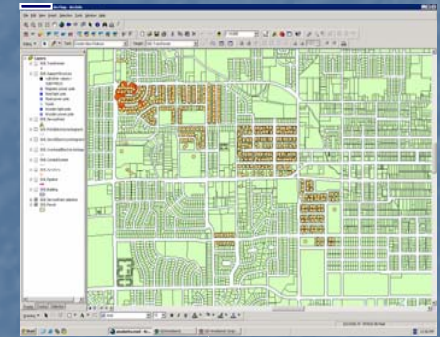
**SAP User**



**Composite User**



**GIS User**





# NESA, Denmark

Telefoni Behandl Spring Indgående opkald Udgående opkald CC-medarbejder System Hjælp

Velkommen til NESA KundeCenter

Afslut kontakt

Forretningspartner

Eft./for.	Westmose	Poul
FP gade/r	Skolekrogen	12
PNr./byld	3500	Værløse DK
Partnr/tlf	600375725	

Opkaldsstatus

Opkalder

Valgt nummer

Aktioner

Info Kunde Flytning Afregn Betaling Teknik Adm.tekn

QMS-kald

Opret målerbehandl.

Opret forsyningsopp.

Omgivelser Bilag Udklipshol...

Kundeoversigt Kontakt Scripting Kontooversigt

Objekt

Objekt	Beskriv...
PRV Poul Westmose / Skolekrogen	Partner 600
01: Poul Westmose/KU1557791	Aftalekonto
Skolekrogen 12, Værløse	Forbrugsst
el Aktiv EL 15-012590	Aftale 1003
EL el, Værløse, Skole Installation	
LK F7 DIREKTE 3	Enhed 648:
el Aktiv NET 15-012590	Aftale 1003
NET el, Værløse, Skole Installation	
LK F7 DIREKTE 3	Enhed 648:
1 Regninger	
13.06.2002 1300.00 DKK	Faktura 550

Vælg fejltype: -Vælg-  
-Vælg-  
Fejl 1-3 lamper u.lys (Brug prioritet C)

15410

15410

15410

92

94

116

421C

P01 (1) (300) sapp01 INS

Start Niels ... Velko... Orad... Micro... O:IT... Creat... DA 16:00



# Real Estate Example

PAR PROPTAX/1/6 Display: Administration - Microsoft Internet Explorer

File Edit View Favorites Tools Help

Back Forward Stop Home Search Favorites Go Links »

Address <https://dy4tdc00.wdf.sap.corp:56181/sap/bc/gui/sap/its/webgui?sap-client=800&sap-language=EN>

**PAR PROPTAX/1/6 Display: Administration**

Menu | Back Cancel System Display Previous Object Display Next Object Changes Between Display <-> Change Create Parcel More...

Parcel of Land PROPTAX/1/6 test

General Data Administration Addresses Areas Assignments Development Partner Usages Contractual Usage Resubmit Overviews

Survey Office

Survey Office External BP number

Hierarchical Object Location

Property Tax PROPTAX Taxable parcel

GIS / other graphical

Corporate Home | EDN | Help

70 35 0 Meters

Powered by ESRI ArcGIS

DY4 800 | dy4tdc00

Local intranet



# PSE&G

The screenshot displays the ArcMap interface with a map of a power system. The map shows various components including transformers (labeled A75, A100, A50), switches (labeled C50, C75, C100), and lines (labeled BOULINK, SHEARWATER). A specific circuit is highlighted in blue, and a transformer is circled in black. Three yellow arrows point to these elements with the following labels:

- Selected Circuit From GIS In Blue**: Points to a blue line on the map.
- Selected Transformer**: Points to a transformer symbol circled in black.
- Related Data From SAP**: Points to the ArcFM Attribute Editor window.

The ArcFM Attribute Editor window shows the following data:

Object ID	Sub Type CD	Functional Location ID	Circuit ID	Phase Designation	Operating Voltage	Label Text	Structure Number	Rated KVA	Low Side Configuration	Low Side Voltage	Break Down Indicator	Network Switch Status	Flow Through Indicator	Network Clearing Location	Switch Type	Nominal Voltage	Comments	Creation User	Last Action Type	Last Action Date	Last Action W/O	Creation Date	Modified Date	Last User	Symbol Rotation	Data Source
4257	SinglePhasePadmount	ME-W-B293-PAD-2575	HNC8013	A	13KV	A75	2575	75	Standard	120/240	No	Open	Yes	0	<Null>	<Null>	<Null>	<Null>	<Null>	12/30/1899	<Null>	<Null>	<Null>	333.697531	FMS Database	

The Circuit Chooser window shows the following data:

Available Circuits	Selected Circuits
HIL4003 HIL4004 HIL4007 HIL4008 HILTF HLB8001 HNC8012 HNC8013	HNC8013

The Layers window shows the following data:

Layers
PSEG.sz_working (sun18)
pseg.electric_052400
pseg.DistributionTransformer
pseg.Switch
pseg.Fuse
pseg.Recloser
pseg.OpenPoint
pseg.CapacitorBank
pseg.PrimaryOHElecLineSegment
pseg.PriSubElecLineSegment
pseg.UndergroundLinearStructure
pseg.WireSymbol
pseg.Splice
pseg.Manhole_HandHole
pseg.SupportStructure
pseg.Vault
pseg.Mat
pseg.Pads
pseg.MiscellaneousAnno
pseg.MiscellaneousNotesAnno
pseg.DistributionTransformerAnno
pseg.SwitchAnno
pseg.FuseAnno
pseg.RecloserAnno
pseg.OpenPointAnno
pseg.CapacitorBankAnno
pseg.SwitchingFacilityAnno
pseg.PrimeOHElecLineSegmentAnno

# Real Estate Example

**SAP Liegenschaftsverwaltung RE/LUM**

Powered by **ESRI** **saardata**

Legend

- Gebäude
- Wohngebäude
- Andere Gebäude
- Gemarkung
- Flur
- Flurstück
- Städte
- Landkreise
- DGRS

Address: [http://wcf3420.wdf.sap.corp:1080/website/ARCDMS\\_SAPViewer.html?activeLayer=48&Query=001\\_ID%3D%27A000301Y%27&QueryZoom=yes](http://wcf3420.wdf.sap.corp:1080/website/ARCDMS_SAPViewer.html?activeLayer=48&Query=001_ID%3D%27A000301Y%27&QueryZoom=yes)

Google

This site is powered by ESRI's ArcIMS Internet technology.  
Copyright (C) 1995-2001 Environmental Systems Research Institute, Inc.  
Created by saardata GmbH, Hohenheim 25, 70511 Stuttgart  
Tel: +49 061 405 2140, Fax: +49 061 405 1077

**ArcIMS** **saardata**

Zoom In

**SAP Liegenschaftsverwaltung RE/LUM**

Powered by **ESRI** **saardata**

Layers

- ☐ Orthophoto
- ☒ Gebäude
- ☒ Gemarkung
- ☒ Flur
- ☒ Flurstück
- ☒ Städte
- ☒ Landkreise
- ☒ Flurkarte

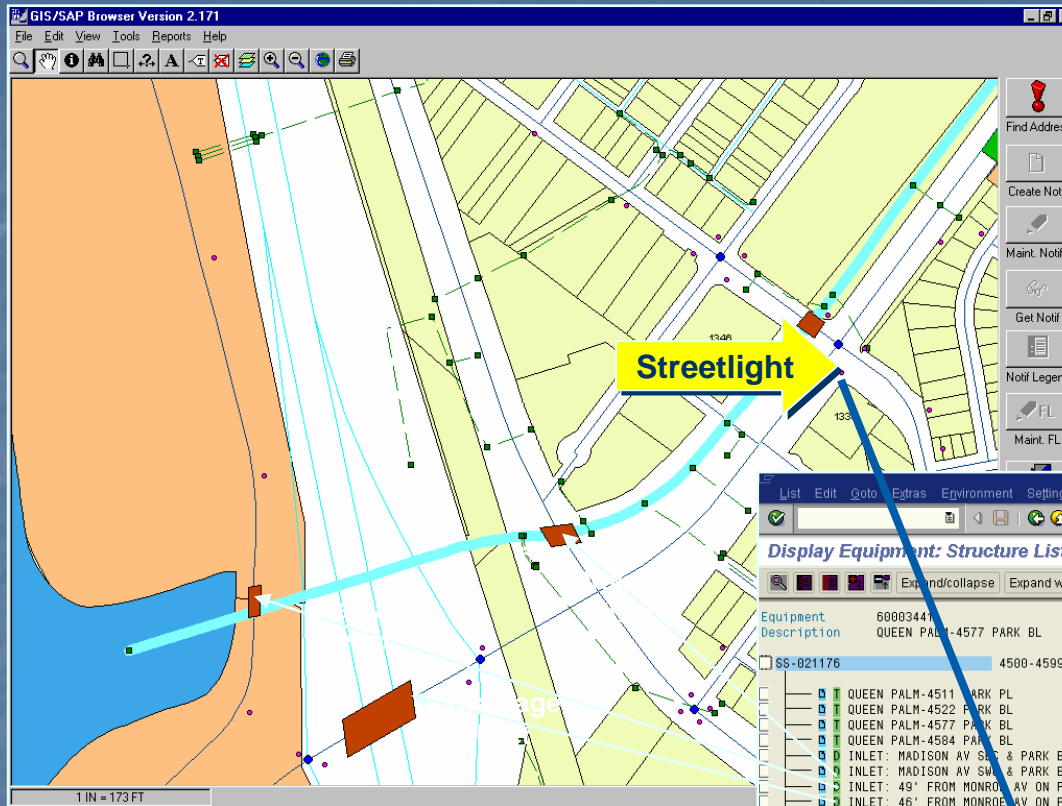
Refresh Map

Flurstück

RNO	OBJ_ID	OBJART	DAT_ERST	AK	ACT	OBJ_TYP	LAND	GEBMARKUNG	FLUR	FLST_NR_Z	FLST_NR_F	FLST_NR_N	GEBMARKUNG_N	FLUR_TEXT	FLURSTUECK	ALB_ID	SHAPE_AREA	SHAPE_LEN
1	AC6JEON	0310233	2003-10-28	01	N	F	10	507	10	217	0	32	622wellingen	Flur 10	217/92	DE-15-0807-010-00017-000002	511.5437055	100.570510058



# San Diego



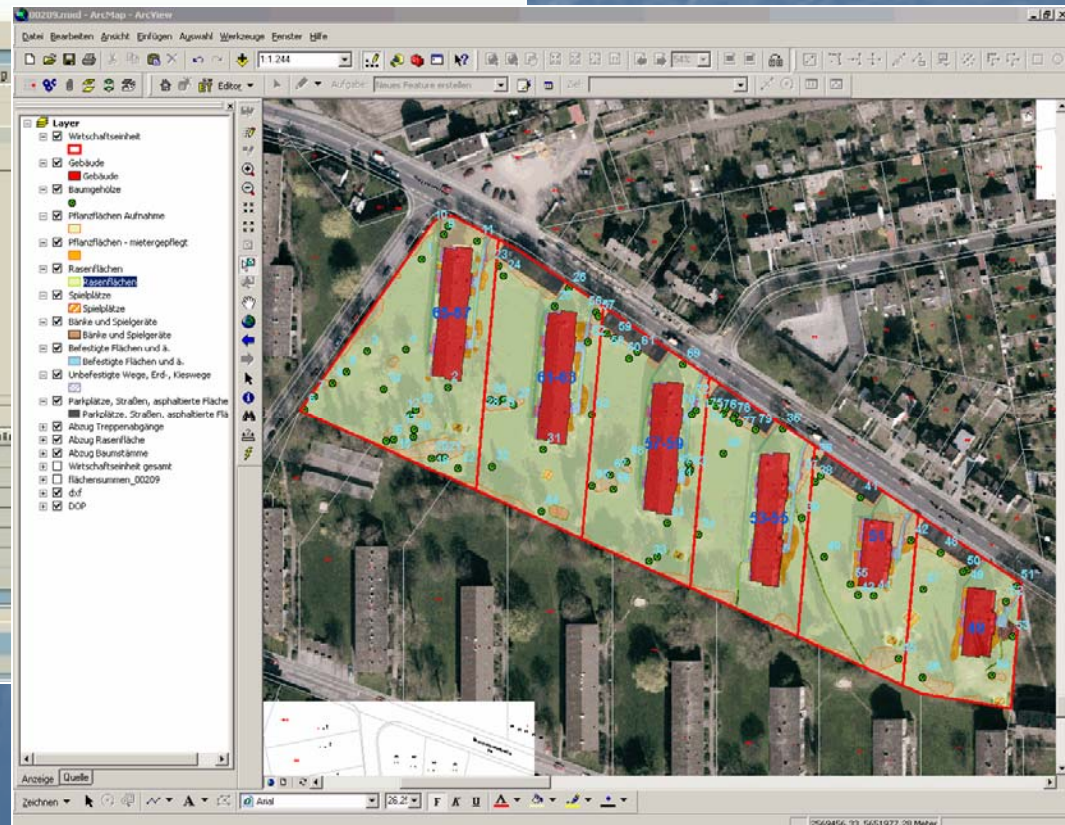
SAP List of all Functional Locations,  
attached Equipment, and Bill of Material

Display Equipment: Structure List

Expand/collapse Expand whole

Equipment	Description	Valid from	
68003447	QUEEN PALM-4577 PARK BL	05/05/00	
SS-021176	4500-4599 PARK BL		S 1269-C4
1	QUEEN PALM-4511 PARK PL		
2	QUEEN PALM-4522 PARK BL		
3	QUEEN PALM-4577 PARK BL		
4	QUEEN PALM-4584 PARK BL		
5	INLET: MADISON AV SW & PARK BL		
6	INLET: MADISON AV SW & PARK BL		
7	INLET: 49' FROM MONROE AV ON PARK BL		
8	INLET: 46' FROM MONROE AV ON PARK BL		
9	CLEANOUT: 33' FROM MADISON AV ON PARK BL		
SS-021176-001	4504 PARK BL N/O MONROE AV 20' W/S		L 1269-C4
1	STANDARD: \$\$, IRON-13		1
2	LUMINAIRE: NORELCO, POST TOP-150[E]		
3	LUMINAIRE: NORELCO, POST TOP-150[W]		
4	LAMP: \$\$, HIGH PRESSURE SODIUM-150		1
5	BALLAST: \$\$, REACTOR-150		1
6	LENS: FORMED PLASTIC, POST TOP-\$\$		1
SS-021176-002	4505 PARK BL N/O MONROE AV 20' E/S		L 1269-C4
SS-021176-003	4588 PARK BL S/O MADISON AV 40' W/S		L 1269-C4
SS-021176-004	PARK BL N/O MONROE AV 240' E/S		L 1269-C4
SS-021176-005	PARK BL N/O MONROE AV 320' W/S		L 1269-C4
SS-021176-006	PARK BL S/O MADISON AV 160' E/S		L 1269-C4

P01 (1) (300) earth OVR

[illegible]



# Real Estate Example

Call GIS from SAP

SAP ↔ ArcGIS

**Flurstück anzeigen: Allgemeine Daten**

**Flurstück anzeigen: Allgemeine Daten**

Dokumentenablage Gesamtübersicht **GIS-Visualisierung**

Allgemeine Daten Kataster Altdaten Veränderungsnachweis Grundbu

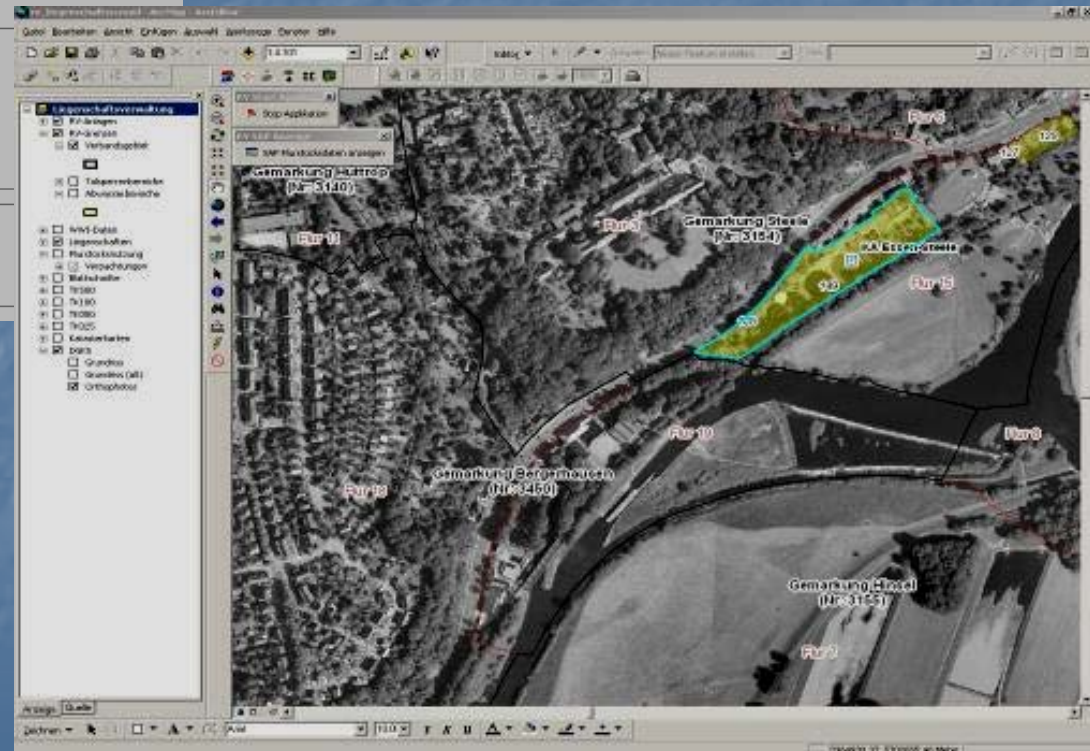
BLand/Gemark. 05 3154 Nordrhein-Westfalen / Steele  
Flur/Flurst 15 149W Flurstkz DE-05-3154-000015-149W

**Kostenstelle**

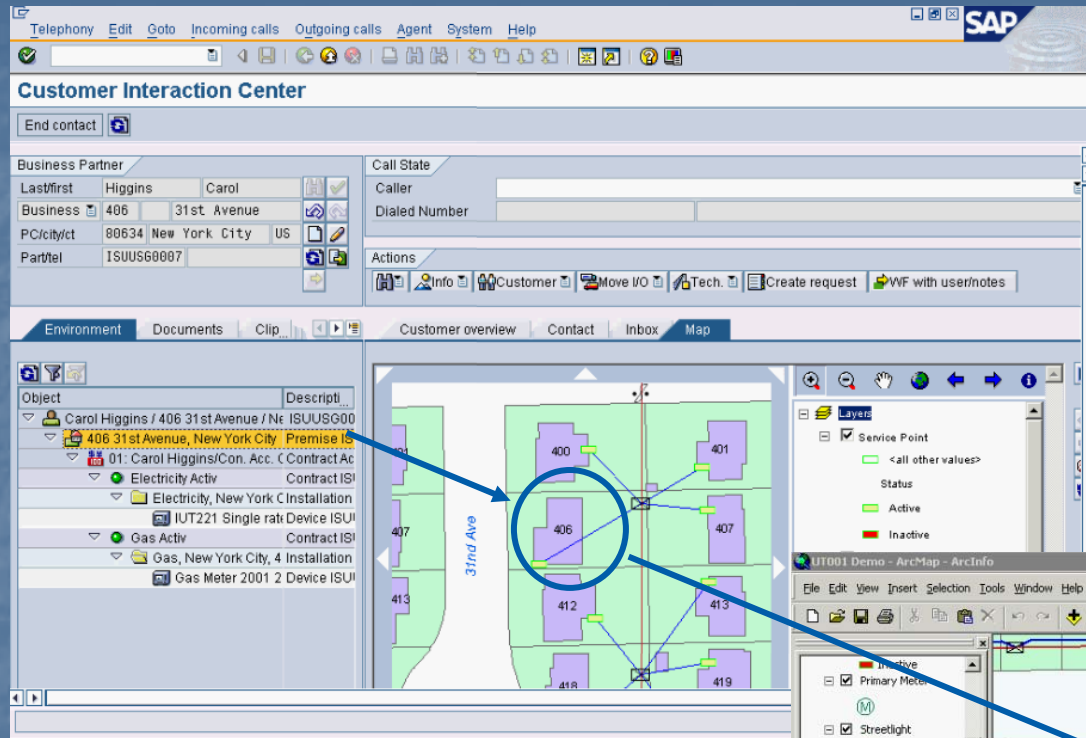
Kostenstelle	1501000	KA Essen-Steele
GeschBereich	0001	Wassergüte
Abteilung	A5	
Wasserw. Anlage	K_501	KA Essen-Steele

**Name und Typ der Anlage**

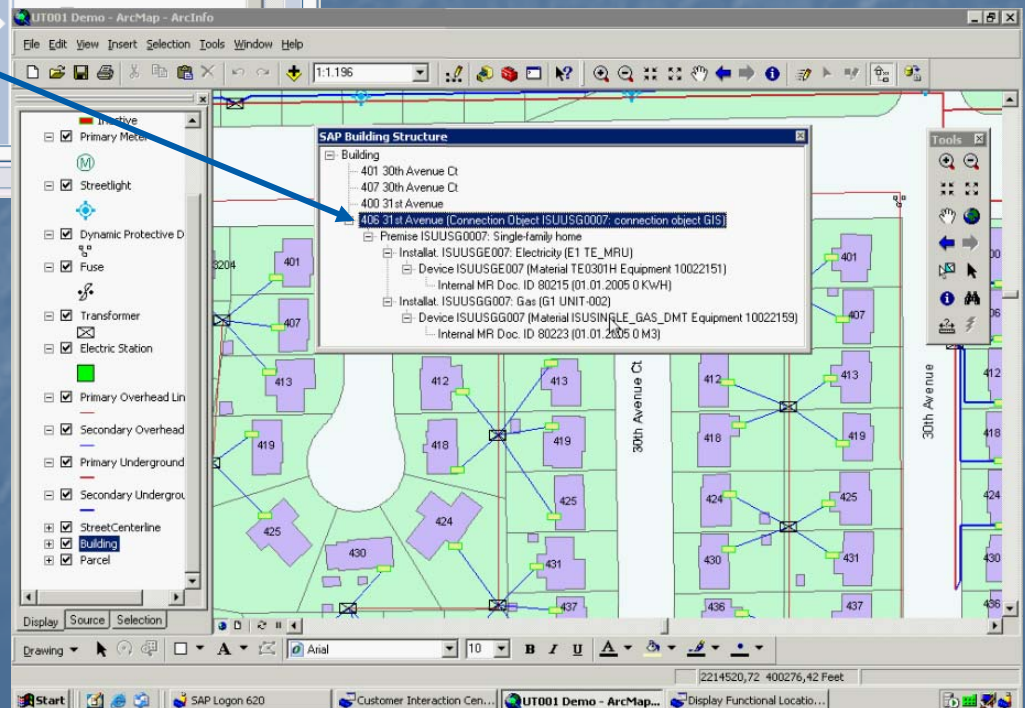
Anlagentyp	KA	Kläranlage
Anlagenname	0140	Essen-Steele



# New Possibilities: Netweaver XI



SAP Data Within Map





# New Possibilities: Vehicle Tracking Composite

Analyst Page - SAP Enterprise Portal 6.0 - Microsoft Internet Explorer

File Edit View Favorites Tools Help

Back Forward Stop Home Search Favorites Media Mail Print Send To Run

Address http://localhost:50000/irj/portal# Go Links

Welcome Digital Communities

Digital Communities Role

home | Dispatcher View | **Analyst View**

History Back Forward

Detailed Navigation

- Analyst Page

Analytics Area

Show Vehicle ... Search

Vehicle Id	Type
<input type="checkbox"/> ID108	Fire Truck
<input type="checkbox"/> ID109	Fire Truck
<input checked="" type="checkbox"/> ID11	Fire Truck
<input type="checkbox"/> ID110	Fire Truck
<input type="checkbox"/> ID111	Fire Truck

11 of 105

Show Missions Show Raw Path

Mission	Address
<input checked="" type="checkbox"/> 06003734	HY 152 / DINOSAUR PT ,
<input type="checkbox"/> 06003765	403 UNIVERSITY AV ,PA
<input type="checkbox"/> 06003936	879 COLORADO AV
<input type="checkbox"/> 06003933	LAGUNITA CT-GRANADA @326 S,

1 of 33

Show Route

Ideal Route Info

Actual Route Info

Portal ArcWeb

ArcWeb Explorer BETA

Navigation Find Directions Map Types

Midway Park  
Houston School  
Lindale Park  
Ray High School  
Caswell Park  
Fannin School  
Casa Linda School  
Baker Junior High  
Carroll Lane School  
Browner Pkwy  
Collier Park  
Lexington School  
Price Field

(c) 2006 ESRI, AND, TANA Inc.

Done

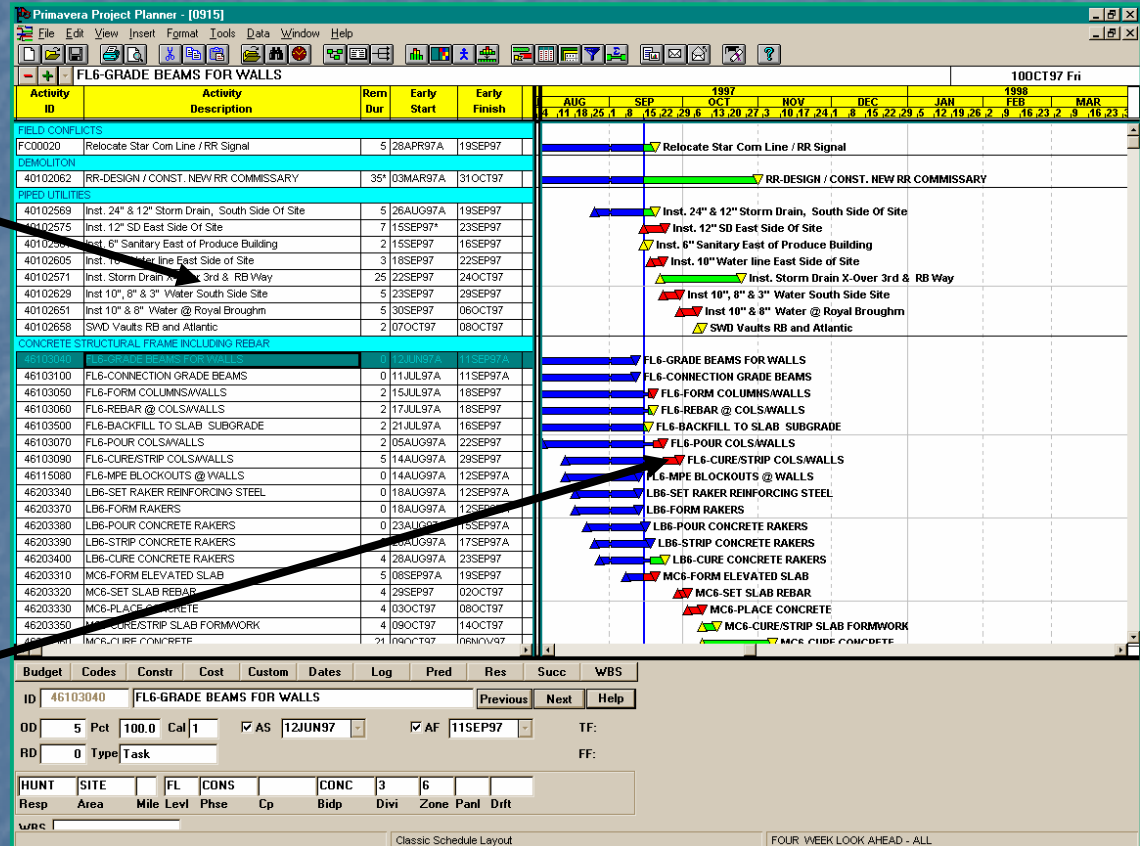
Local intranet

start

2 Wi... ToolLa... Visual ... 5 Int... Inbox ... EditPl... Prese... untile...

16:02 PM

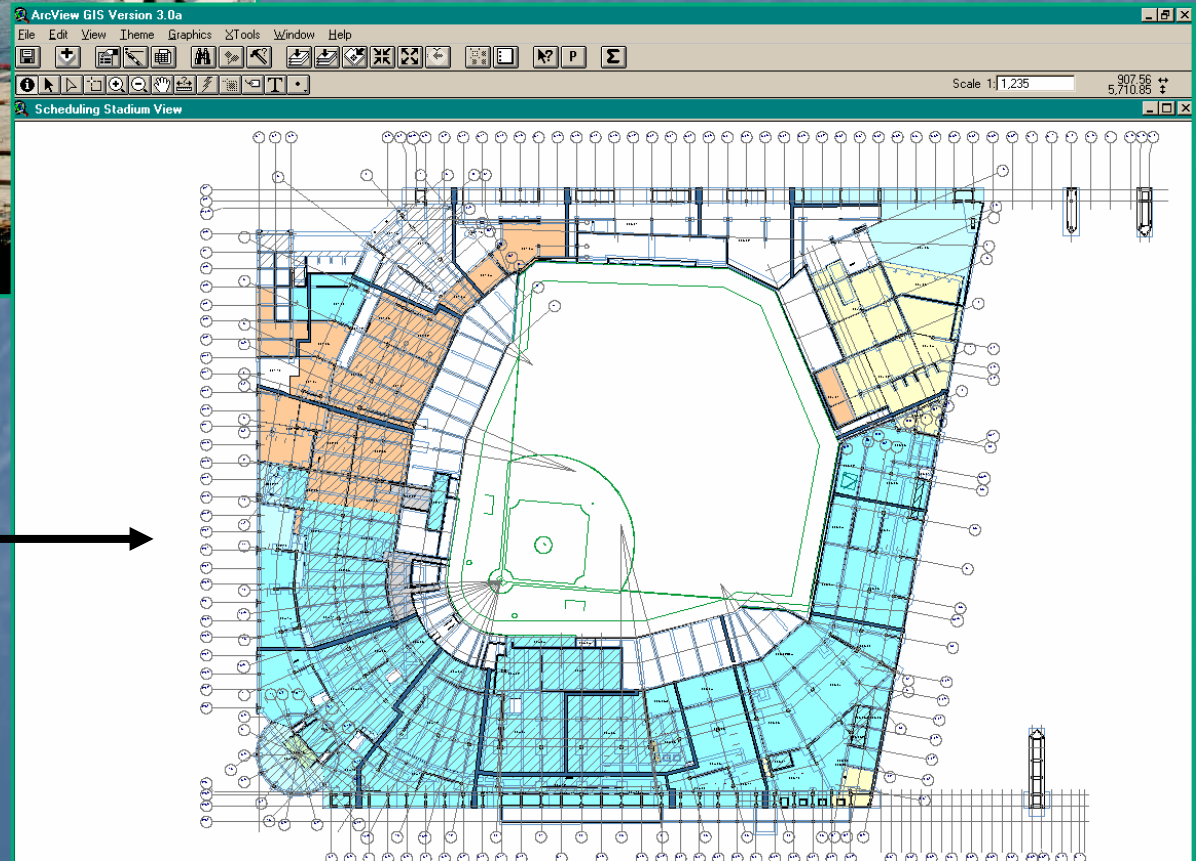
# Typical Project Management : Schedule for each element in the Work Breakdown Structure (WBS)





# GIS Enhanced Project Management

## Potential problem areas (orange on this map)



Project: Stadium View

Sheet: 1 of 1

Item	Description	Quantity	Unit	Material	Notes
1	SEATING BOWL	1	EA	CONCRETE	SEE DETAIL
2	SEATING BOWL	1	EA	CONCRETE	SEE DETAIL
3	SEATING BOWL	1	EA	CONCRETE	SEE DETAIL
4	SEATING BOWL	1	EA	CONCRETE	SEE DETAIL
5	SEATING BOWL	1	EA	CONCRETE	SEE DETAIL
6	SEATING BOWL	1	EA	CONCRETE	SEE DETAIL
7	SEATING BOWL	1	EA	CONCRETE	SEE DETAIL
8	SEATING BOWL	1	EA	CONCRETE	SEE DETAIL
9	SEATING BOWL	1	EA	CONCRETE	SEE DETAIL
10	SEATING BOWL	1	EA	CONCRETE	SEE DETAIL
11	SEATING BOWL	1	EA	CONCRETE	SEE DETAIL
12	SEATING BOWL	1	EA	CONCRETE	SEE DETAIL
13	SEATING BOWL	1	EA	CONCRETE	SEE DETAIL
14	SEATING BOWL	1	EA	CONCRETE	SEE DETAIL
15	SEATING BOWL	1	EA	CONCRETE	SEE DETAIL
16	SEATING BOWL	1	EA	CONCRETE	SEE DETAIL
17	SEATING BOWL	1	EA	CONCRETE	SEE DETAIL
18	SEATING BOWL	1	EA	CONCRETE	SEE DETAIL
19	SEATING BOWL	1	EA	CONCRETE	SEE DETAIL
20	SEATING BOWL	1	EA	CONCRETE	SEE DETAIL
21	SEATING BOWL	1	EA	CONCRETE	SEE DETAIL
22	SEATING BOWL	1	EA	CONCRETE	SEE DETAIL
23	SEATING BOWL	1	EA	CONCRETE	SEE DETAIL
24	SEATING BOWL	1	EA	CONCRETE	SEE DETAIL
25	SEATING BOWL	1	EA	CONCRETE	SEE DETAIL
26	SEATING BOWL	1	EA	CONCRETE	SEE DETAIL
27	SEATING BOWL	1	EA	CONCRETE	SEE DETAIL
28	SEATING BOWL	1	EA	CONCRETE	SEE DETAIL
29	SEATING BOWL	1	EA	CONCRETE	SEE DETAIL
30	SEATING BOWL	1	EA	CONCRETE	SEE DETAIL
31	SEATING BOWL	1	EA	CONCRETE	SEE DETAIL
32	SEATING BOWL	1	EA	CONCRETE	SEE DETAIL
33	SEATING BOWL	1	EA	CONCRETE	SEE DETAIL
34	SEATING BOWL	1	EA	CONCRETE	SEE DETAIL
35	SEATING BOWL	1	EA	CONCRETE	SEE DETAIL
36	SEATING BOWL	1	EA	CONCRETE	SEE DETAIL
37	SEATING BOWL	1	EA	CONCRETE	SEE DETAIL
38	SEATING BOWL	1	EA	CONCRETE	SEE DETAIL
39	SEATING BOWL	1	EA	CONCRETE	SEE DETAIL
40	SEATING BOWL	1	EA	CONCRETE	SEE DETAIL
41	SEATING BOWL	1	EA	CONCRETE	SEE DETAIL
42	SEATING BOWL	1	EA	CONCRETE	SEE DETAIL
43	SEATING BOWL	1	EA	CONCRETE	SEE DETAIL
44	SEATING BOWL	1	EA	CONCRETE	SEE DETAIL
45	SEATING BOWL	1	EA	CONCRETE	SEE DETAIL
46	SEATING BOWL	1	EA	CONCRETE	SEE DETAIL
47	SEATING BOWL	1	EA	CONCRETE	SEE DETAIL
48	SEATING BOWL	1	EA	CONCRETE	SEE DETAIL
49	SEATING BOWL	1	EA	CONCRETE	SEE DETAIL
50	SEATING BOWL	1	EA	CONCRETE	SEE DETAIL
51	SEATING BOWL	1	EA	CONCRETE	SEE DETAIL
52	SEATING BOWL	1	EA	CONCRETE	SEE DETAIL
53	SEATING BOWL	1	EA	CONCRETE	SEE DETAIL
54	SEATING BOWL	1	EA	CONCRETE	SEE DETAIL
55	SEATING BOWL	1	EA	CONCRETE	SEE DETAIL
56	SEATING BOWL	1	EA	CONCRETE	SEE DETAIL
57	SEATING BOWL	1	EA	CONCRETE	SEE DETAIL
58	SEATING BOWL	1	EA	CONCRETE	SEE DETAIL
59	SEATING BOWL	1	EA	CONCRETE	SEE DETAIL
60	SEATING BOWL	1	EA	CONCRETE	SEE DETAIL
61	SEATING BOWL	1	EA	CONCRETE	SEE DETAIL
62	SEATING BOWL	1	EA	CONCRETE	SEE DETAIL
63	SEATING BOWL	1	EA	CONCRETE	SEE DETAIL
64	SEATING BOWL	1	EA	CONCRETE	SEE DETAIL
65	SEATING BOWL	1	EA	CONCRETE	SEE DETAIL
66	SEATING BOWL	1	EA	CONCRETE	SEE DETAIL
67	SEATING BOWL	1	EA	CONCRETE	SEE DETAIL
68	SEATING BOWL	1	EA	CONCRETE	SEE DETAIL
69	SEATING BOWL	1	EA	CONCRETE	SEE DETAIL
70	SEATING BOWL	1	EA	CONCRETE	SEE DETAIL
71	SEATING BOWL	1	EA	CONCRETE	SEE DETAIL
72	SEATING BOWL	1	EA	CONCRETE	SEE DETAIL
73	SEATING BOWL	1	EA	CONCRETE	SEE DETAIL
74	SEATING BOWL	1	EA	CONCRETE	SEE DETAIL
75	SEATING BOWL	1	EA	CONCRETE	SEE DETAIL
76	SEATING BOWL	1	EA	CONCRETE	SEE DETAIL
77	SEATING BOWL	1	EA	CONCRETE	SEE DETAIL
78	SEATING BOWL	1	EA	CONCRETE	SEE DETAIL
79	SEATING BOWL	1	EA	CONCRETE	SEE DETAIL
80	SEATING BOWL	1	EA	CONCRETE	SEE DETAIL
81	SEATING BOWL	1	EA	CONCRETE	SEE DETAIL
82	SEATING BOWL	1	EA	CONCRETE	SEE DETAIL
83	SEATING BOWL	1	EA	CONCRETE	SEE DETAIL
84	SEATING BOWL	1	EA	CONCRETE	SEE DETAIL
85	SEATING BOWL	1	EA	CONCRETE	SEE DETAIL
86	SEATING BOWL	1	EA	CONCRETE	SEE DETAIL
87	SEATING BOWL	1	EA	CONCRETE	SEE DETAIL
88	SEATING BOWL	1	EA	CONCRETE	SEE DETAIL
89	SEATING BOWL	1	EA	CONCRETE	SEE DETAIL
90	SEATING BOWL	1	EA	CONCRETE	SEE DETAIL
91	SEATING BOWL	1	EA	CONCRETE	SEE DETAIL
92	SEATING BOWL	1	EA	CONCRETE	SEE DETAIL
93	SEATING BOWL	1	EA	CONCRETE	SEE DETAIL
94	SEATING BOWL	1	EA	CONCRETE	SEE DETAIL
95	SEATING BOWL	1	EA	CONCRETE	SEE DETAIL
96	SEATING BOWL	1	EA	CONCRETE	SEE DETAIL
97	SEATING BOWL	1	EA	CONCRETE	SEE DETAIL
98	SEATING BOWL	1	EA	CONCRETE	SEE DETAIL
99	SEATING BOWL	1	EA	CONCRETE	SEE DETAIL
100	SEATING BOWL	1	EA	CONCRETE	SEE DETAIL

# Managing Problems

London 5.1 130750

File Edit View Database Tools

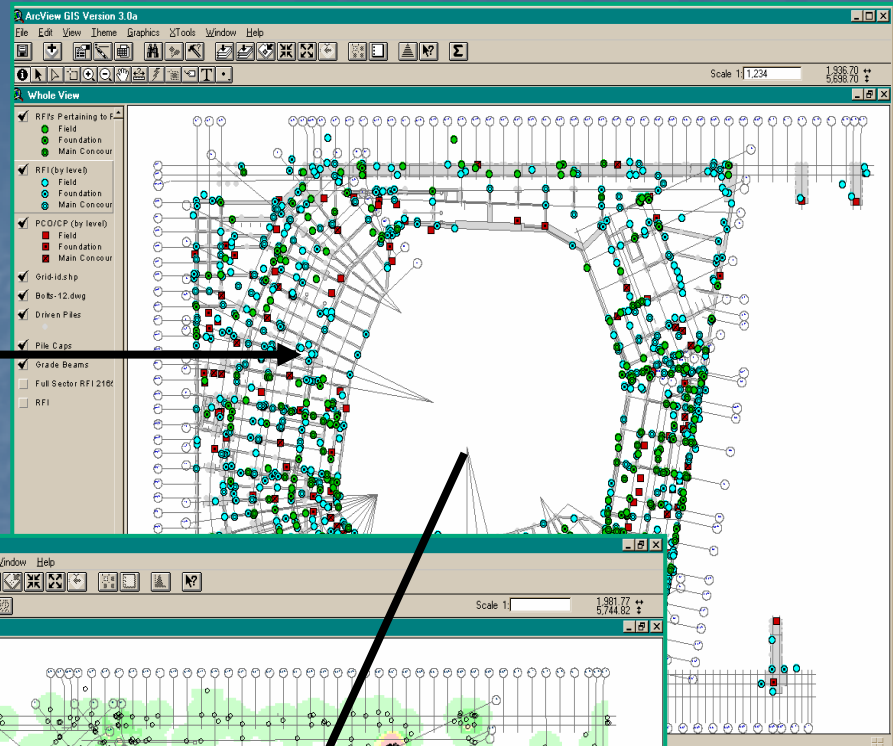
Request

Type	To	From	Change No.	Title	Status	Cost	Date	Responded	Approved	Required
RFI	W/SO	HE	19-00001	NEW	NEW	\$0.00	10/1/97			
RFI	W/SO	HE	19-00002	NEW	NEW	\$0.00	10/4/97			
RFI	W/SO	HE	19-00003	NEW	NEW	\$0.00	10/4/97			
RFI	W/SO	HE	19-00004	NEW	NEW	\$0.00	10/4/97			
RFI	W/SO	HE	19-00005	NEW	NEW	\$0.00	10/4/97			
RFI	W/SO	HE	19-00006	NEW	NEW	\$0.00	10/4/97			
RFI	W/SO	HE	19-00007	NEW	NEW	\$0.00	10/4/97			
RFI	W/SO	HE	19-00008	NEW	NEW	\$0.00	10/4/97			
RFI	W/SO	HE	19-00009	NEW	NEW	\$0.00	10/4/97			
RFI	W/SO	HE	19-00010	NEW	NEW	\$0.00	10/4/97			
RFI	W/SO	HE	19-00011	NEW	NEW	\$0.00	10/4/97			
RFI	W/SO	HE	19-00012	NEW	NEW	\$0.00	10/4/97			
RFI	W/SO	HE	19-00013	NEW	NEW	\$0.00	10/4/97			
RFI	W/SO	HE	19-00014	NEW	NEW	\$0.00	10/4/97			
RFI	W/SO	HE	19-00015	NEW	NEW	\$0.00	10/4/97			
RFI	W/SO	HE	19-00016	NEW	NEW	\$0.00	10/4/97			
RFI	W/SO	HE	19-00017	NEW	NEW	\$0.00	10/4/97			
RFI	W/SO	HE	19-00018	NEW	NEW	\$0.00	10/4/97			
RFI	W/SO	HE	19-00019	NEW	NEW	\$0.00	10/4/97			
RFI	W/SO	HE	19-00020	NEW	NEW	\$0.00	10/4/97			
RFI	W/SO	HE	19-00021	NEW	NEW	\$0.00	10/4/97			
RFI	W/SO	HE	19-00022	NEW	NEW	\$0.00	10/4/97			
RFI	W/SO	HE	19-00023	NEW	NEW	\$0.00	10/4/97			
RFI	W/SO	HE	19-00024	NEW	NEW	\$0.00	10/4/97			
RFI	W/SO	HE	19-00025	NEW	NEW	\$0.00	10/4/97			
RFI	W/SO	HE	19-00026	NEW	NEW	\$0.00	10/4/97			
RFI	W/SO	HE	19-00027	NEW	NEW	\$0.00	10/4/97			
RFI	W/SO	HE	19-00028	NEW	NEW	\$0.00	10/4/97			
RFI	W/SO	HE	19-00029	NEW	NEW	\$0.00	10/4/97			
RFI	W/SO	HE	19-00030	NEW	NEW	\$0.00	10/4/97			
RFI	W/SO	HE	19-00031	NEW	NEW	\$0.00	10/4/97			
RFI	W/SO	HE	19-00032	NEW	NEW	\$0.00	10/4/97			
RFI	W/SO	HE	19-00033	NEW	NEW	\$0.00	10/4/97			

Filter: No Filter Set: Default

Request for Information  
Log

Problem Hotspots



RFIs Mapped to  
Project



# An Improved Way to Visualize Projects

