



ESRI MID-ATLANTIC USER CONFERENCE

# ArcGIS Field Apps: What's New and What's Coming

Daniel Wickens – Solution Engineer

[dwickens@esri.com](mailto:dwickens@esri.com)









# Field Operations | A capability of ArcGIS

## MISSION STATEMENT

To digitally enable mobile workflows with **location intelligence** so field work can be completed **faster, more efficiently**, with better **return on investment**.

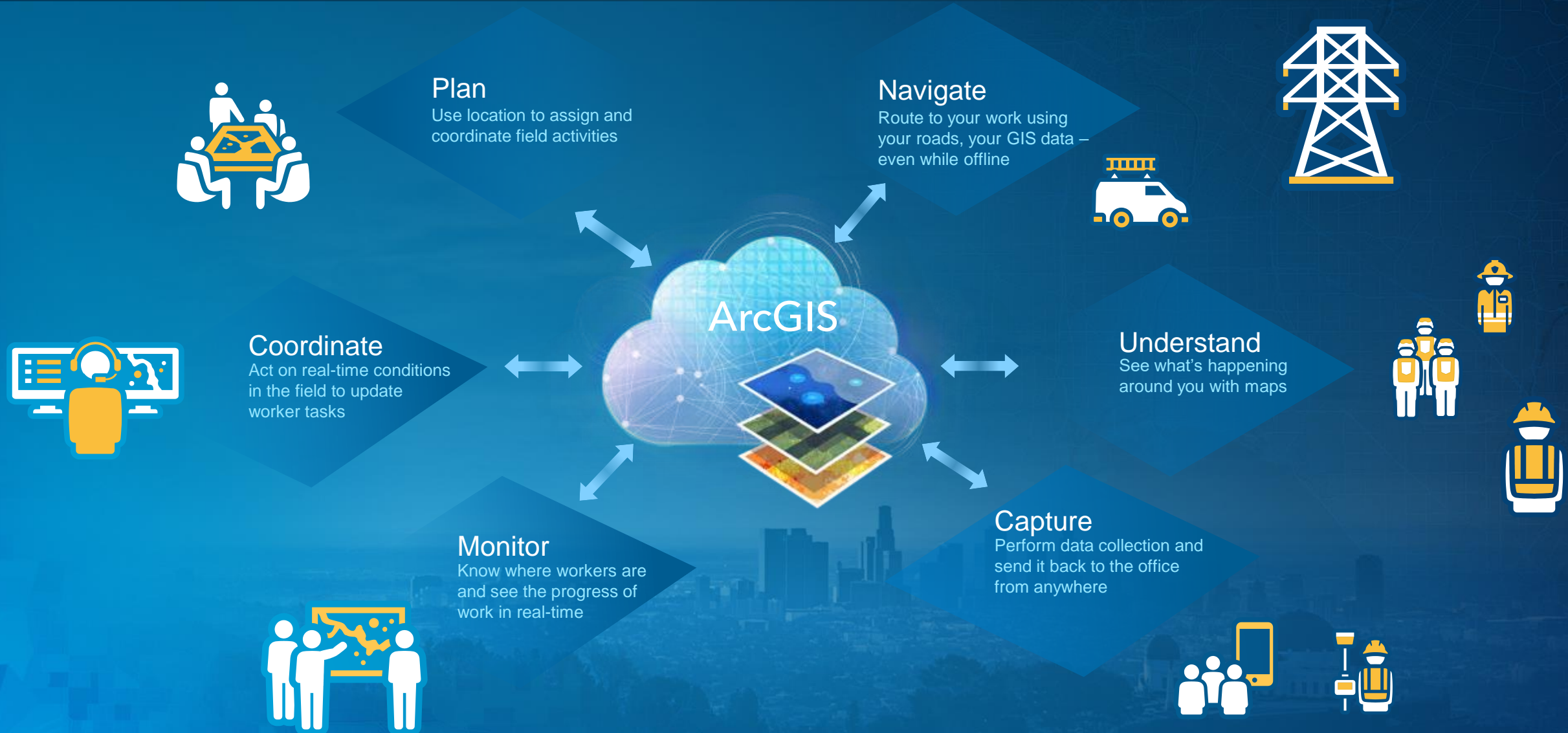
*Optimize efficiency in field operations with the power of location intelligence*

# Field Operations | It starts with ArcGIS



# Field Operations

Location-enable all phases of field work





# Field Operations

Location-enable all phases of field work



# Field Operations Apps | Road Ahead

## **Provide consistency of experience across apps**

- Offline modes in every app
- Improve sign in experience across apps
- Achieve and maintain parity across all supported platforms

## **Enable ArcGIS Smart Forms across apps**

- Create and use smart forms within Collector
- View smart forms in Explorer (and across the platform)

## **Make Field Operations apps easier to set up and manage**

- Collector web app

## **Online Navigation**

- Live traffic
- Live weather

## **Research areas**

Indoor positioning  
Utility network integration  
Parcel fabric integration  
At-rest data encryption  
Augmented reality  
Windows support

\* As always, roadmap slides are subject to change at any time



# Workforce for ArcGIS

Plan and coordinate field work

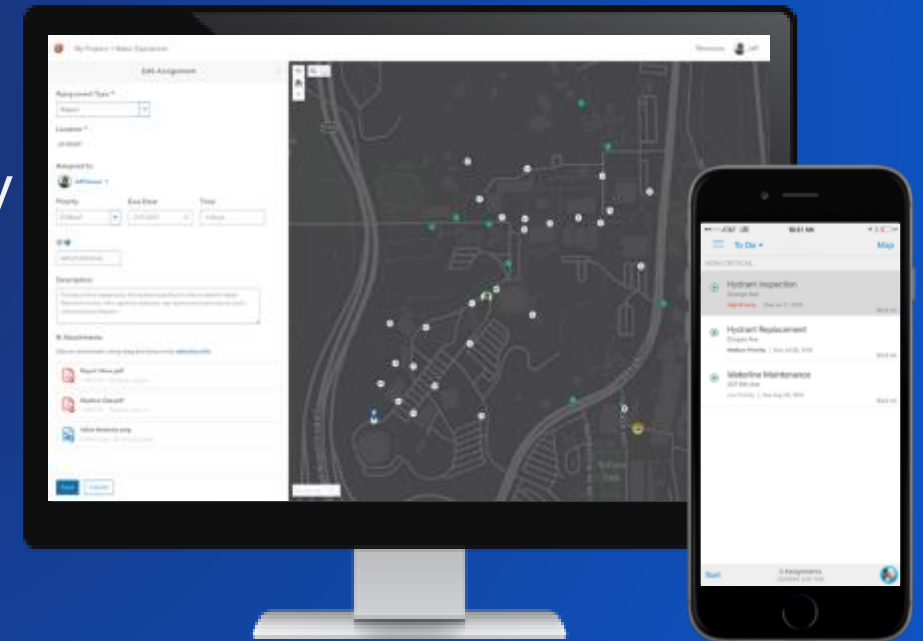
## Plan

Use location to assign and coordinate field activities

Plan and coordinate field work

Use location awareness to improve efficiency

Receive & manage field assignments







# Workforce for ArcGIS

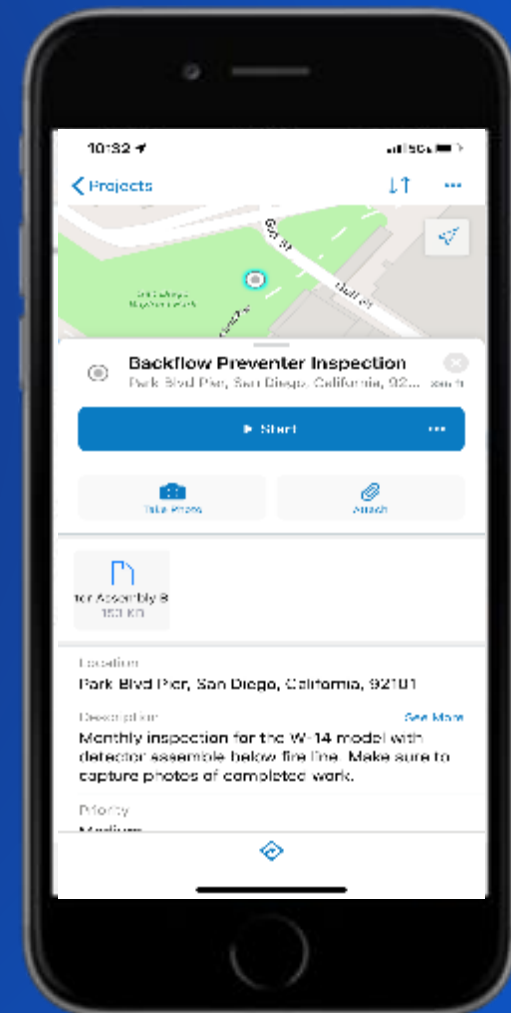
What's Next in Workforce

Support for **offline** workflows

Ability to display local tracks from Tracker

Pick-up work

Sequencing





# Navigator for ArcGIS

Route your field workforce to where it needs to go

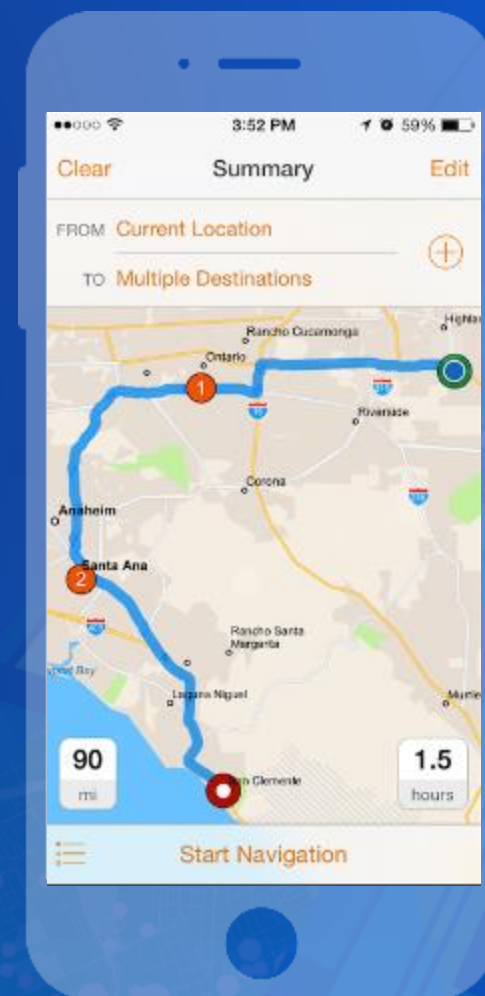
Find assets and navigate to them while **offline**

Use **your own** maps, asset inventory, and custom roads

Traverse **pre-planned routes** for maximum efficiency

## Navigate

Route to your work using  
your roads, your GIS data –  
even while offline



Download on the  
**App Store**



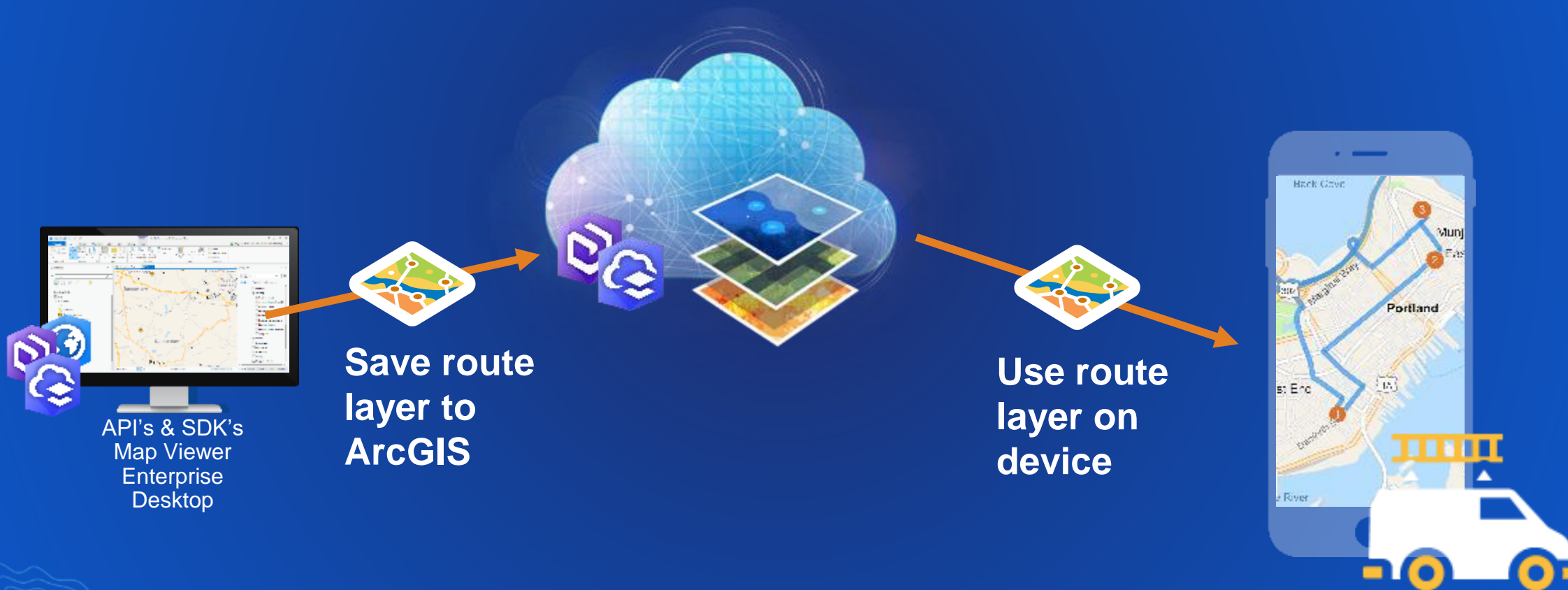
GET IT ON  
**Google Play**





# Use Route Layers from ArcGIS

What's New in Navigator for ArcGIS

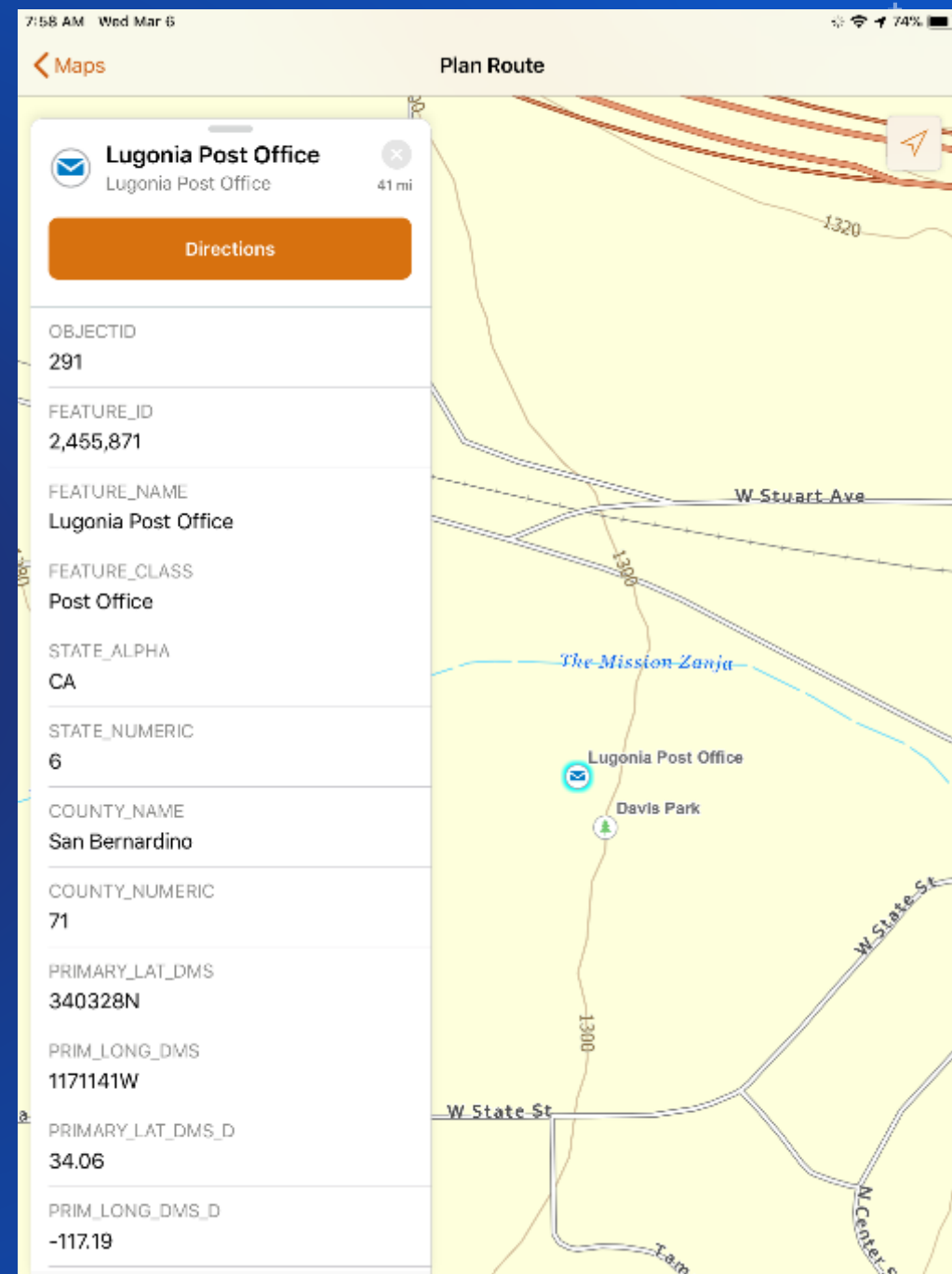




# See feature details

What's New in Navigator for ArcGIS

Get to the right locations by seeing attributes, attachments, and media associated with features



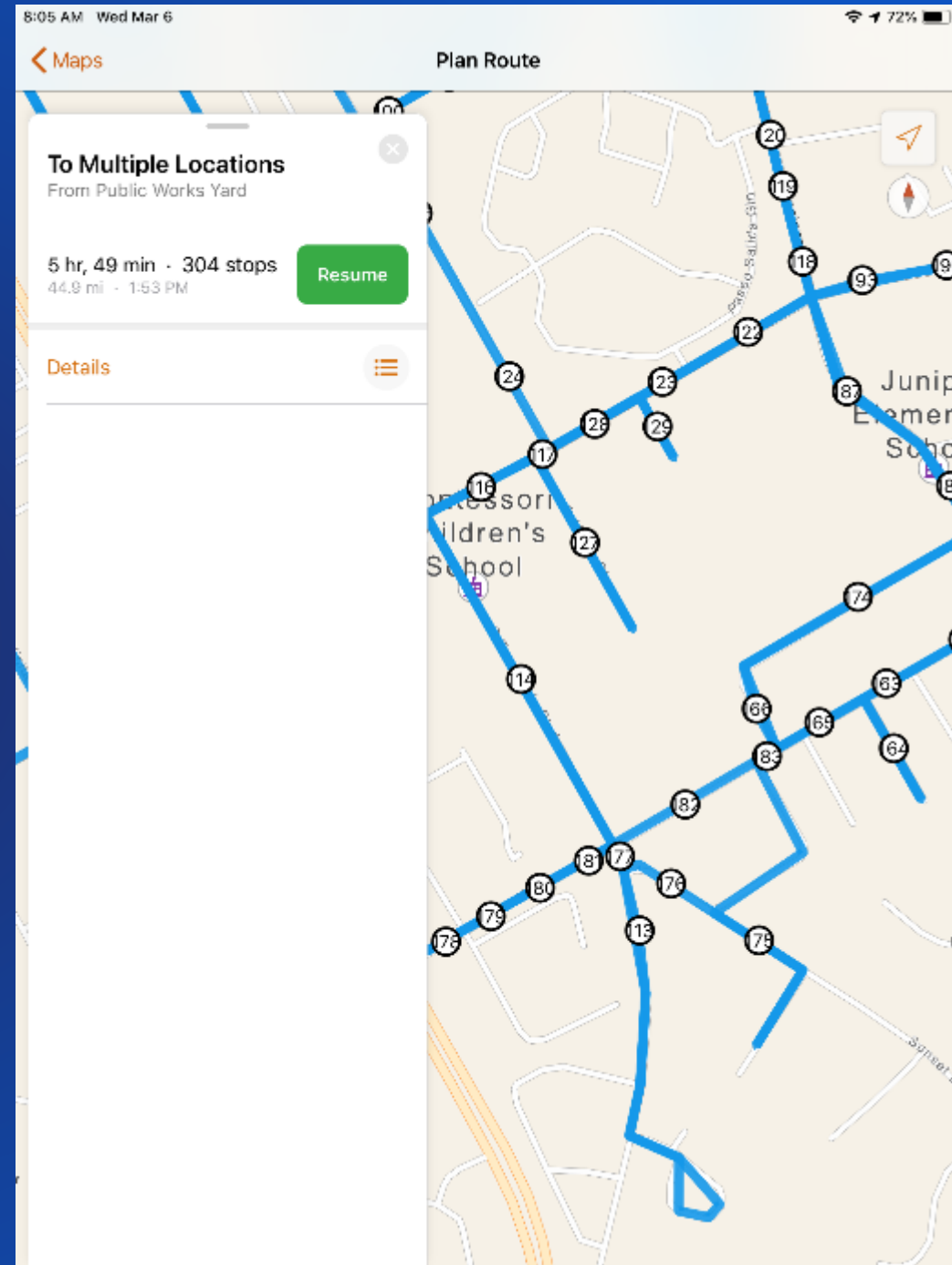




# Route pausing

What's New in Navigator for ArcGIS

- Navigator remembers where you were in your route and intelligently resumes where you left off.
- 'Lunch mode'





# Support for IWA

What's New in Navigator for ArcGIS

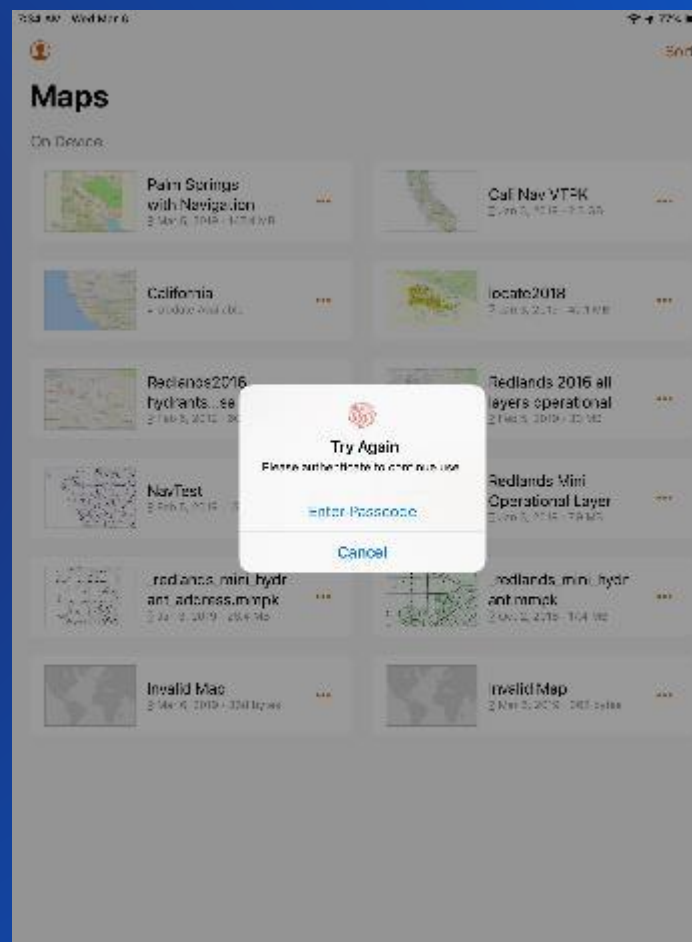
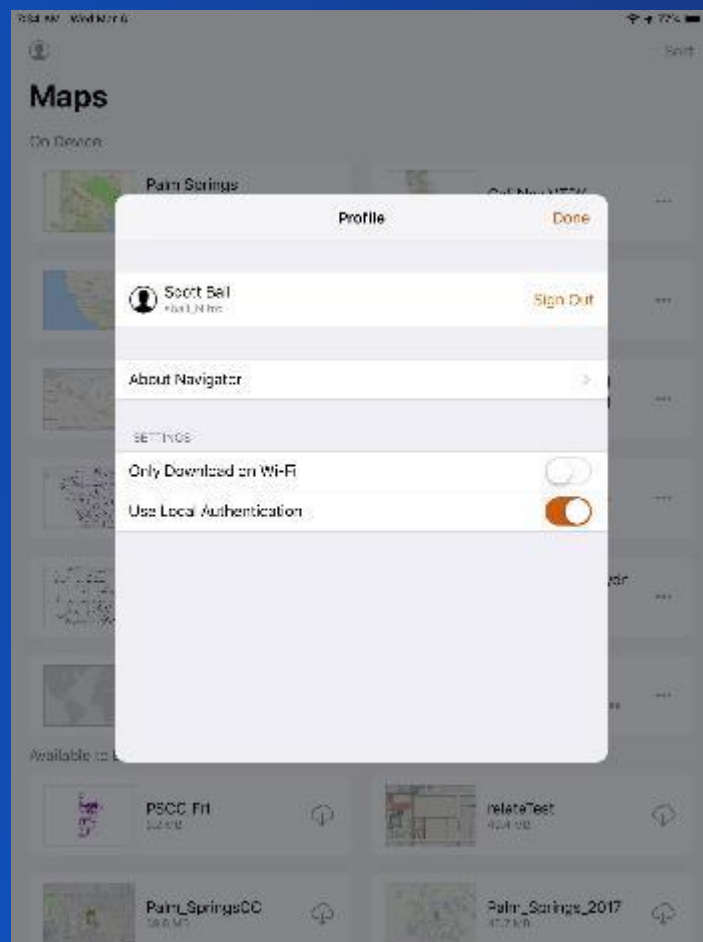






# Biometric authentication

What's New in Navigator for ArcGIS

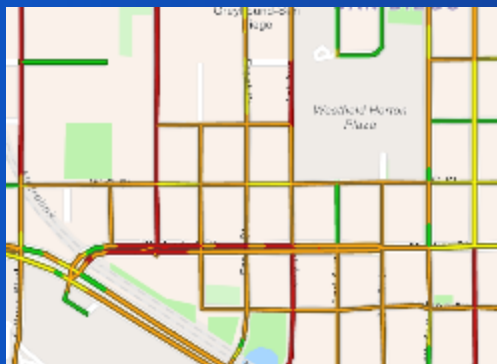




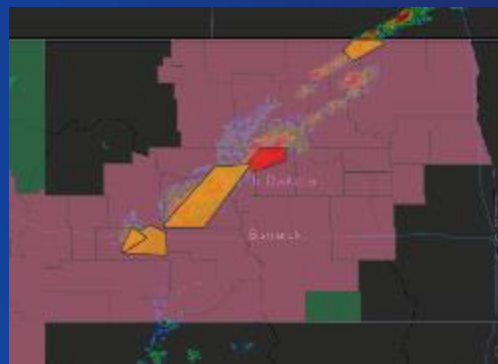
# What's Next?

Navigator for ArcGIS

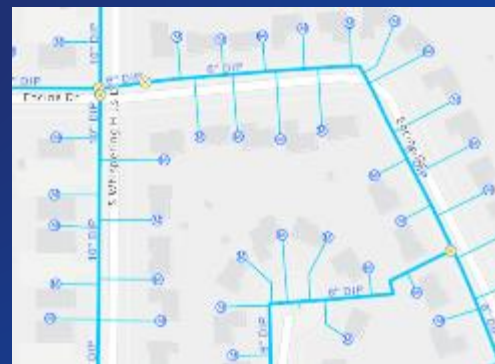
## Connected services



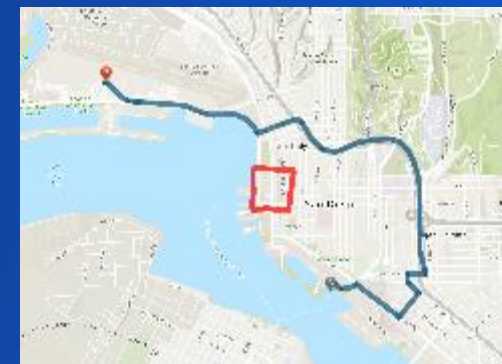
Live traffic



Live weather



Web maps



Barriers





# Explorer for ArcGIS

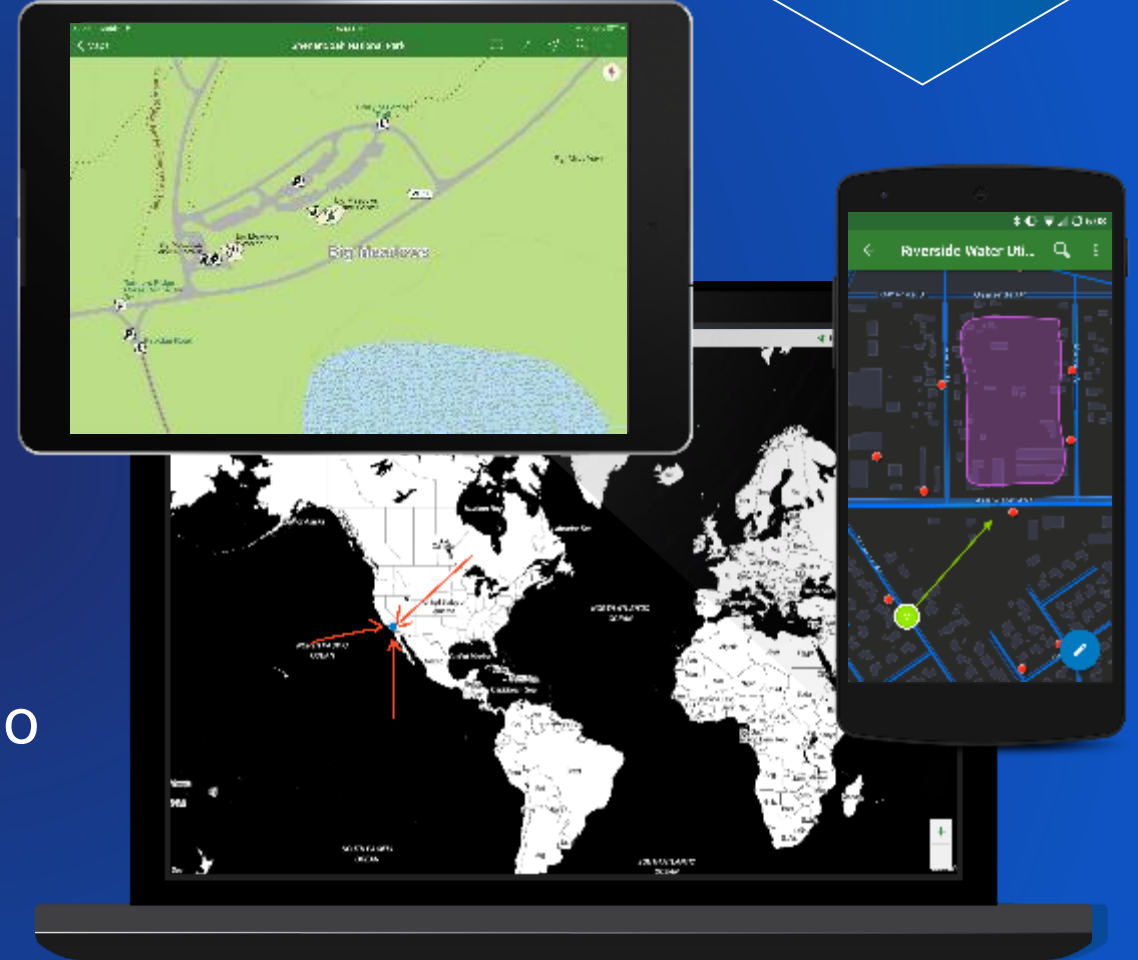
Maps at your fingertips

View your maps anywhere

Easily find field assets

Create and share notes on-the-go

Understand  
See what's happening  
around you with maps



Get it from  
**Microsoft**

Download on the  
**App Store**

GET IT ON  
**Google Play**



# Windows 10 support

What's Coming in Explorer for ArcGIS



GET IT ON  
**Google Play**



Download on the

*JUST SEARCH FOR "EXPLORER FOR ARCGIS"  
IN THE MICROSOFT STORE*



Get it from  
**Micr**



Try the beta now!





# Layer refresh interval support

What's Coming in Explorer for ArcGIS





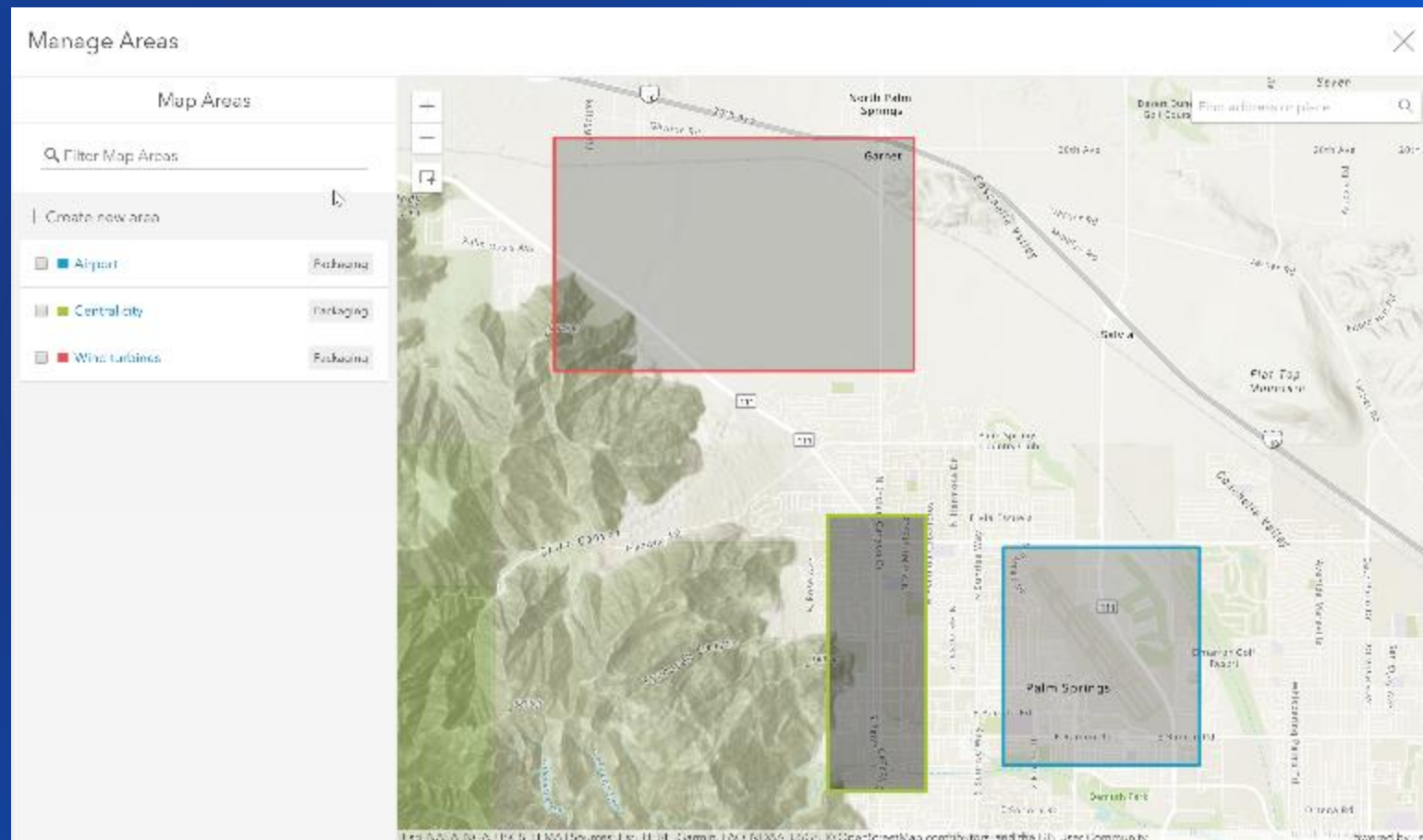


# Offline improvements

What's Coming in Explorer for ArcGIS

## Offline Areas

Areas are defined in the webmap by the author and loaded onto the device via Explorer





## Functionally equivalent to what is in Collector today



# Collector for ArcGIS

Accurate data collection made easy

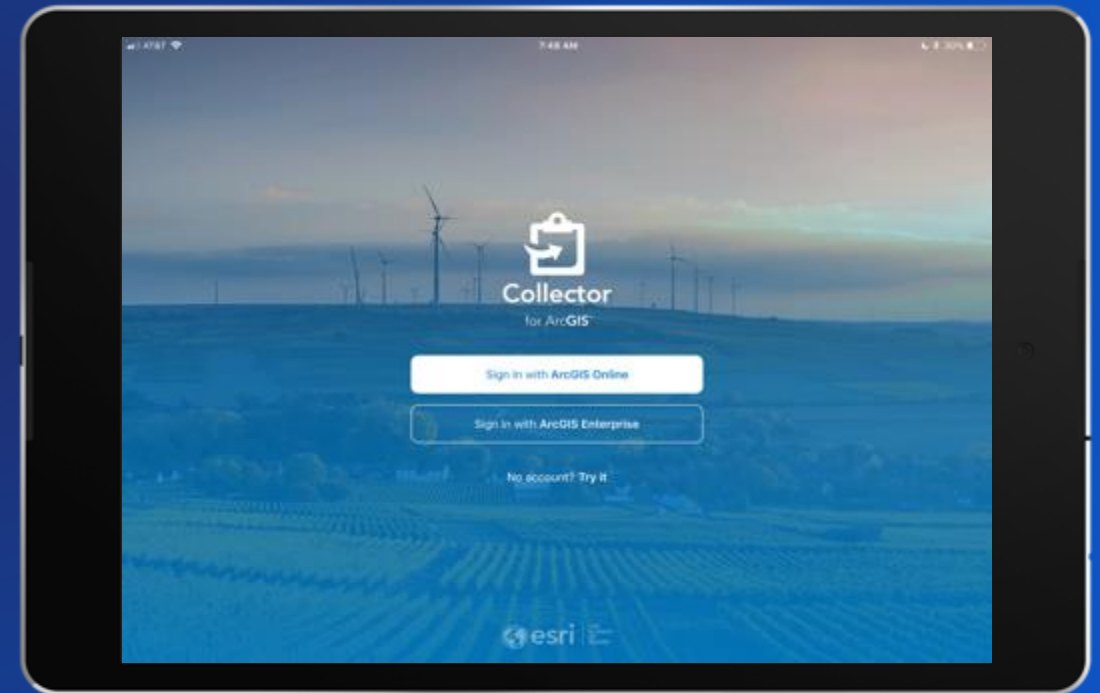
## Capture

Perform data collection and send it back to the office from anywhere

Efficient data collection

Works anywhere, anytime

High data accuracy







# Collector for ArcGIS

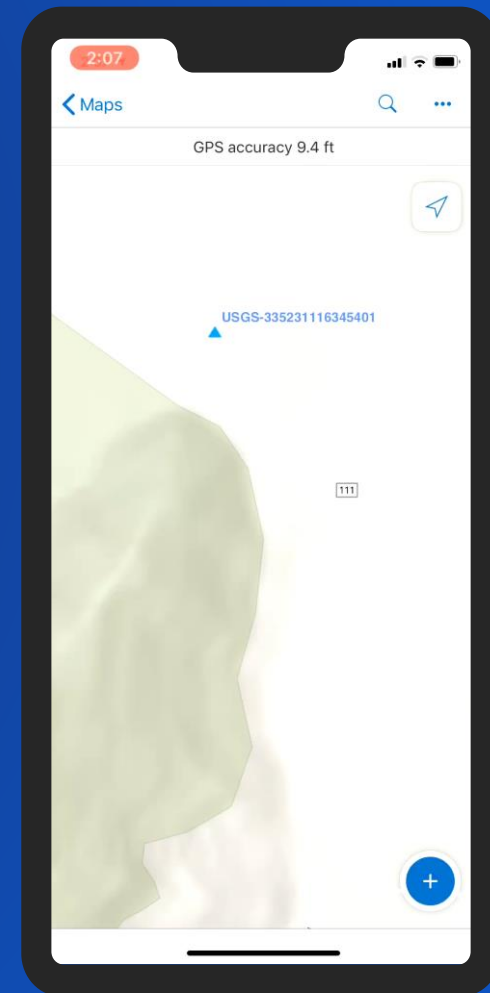
What's New and What's Coming

## What's New

- Parity release bringing Collector in line with Collector Classic
- Referenced basemaps, using the Files app, new transformations, more...

## What's Coming

- Locate workflows
- PKI support
- Parcel construction
- Snapping
- Bulk attribute update
- Simplifying field deployments with a new web interface
- Android support for new generation of Collector
- Introducing support for ArcGIS Smart Forms
- Utility Network support





# Survey123 for ArcGIS

Form Centric Data Collection

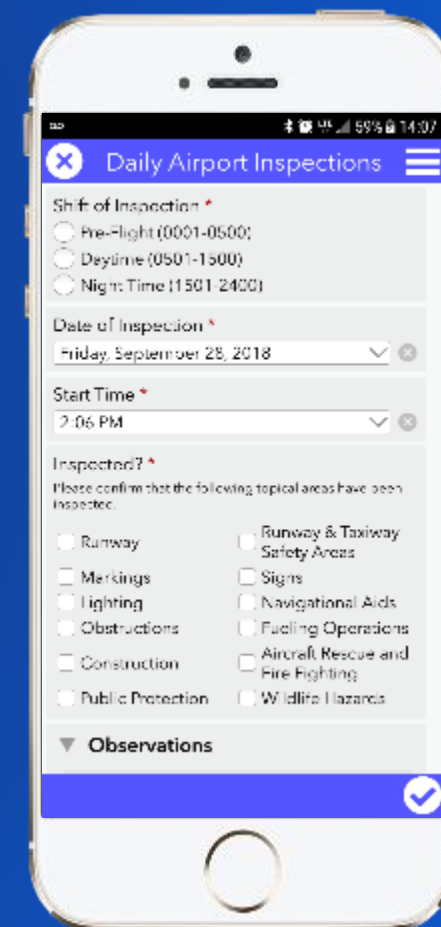
Simple data collection experience

Sophisticated smart form capabilities

Web & Native

## Capture

Perform data collection and send it back to the office from anywhere





# Survey123 for ArcGIS

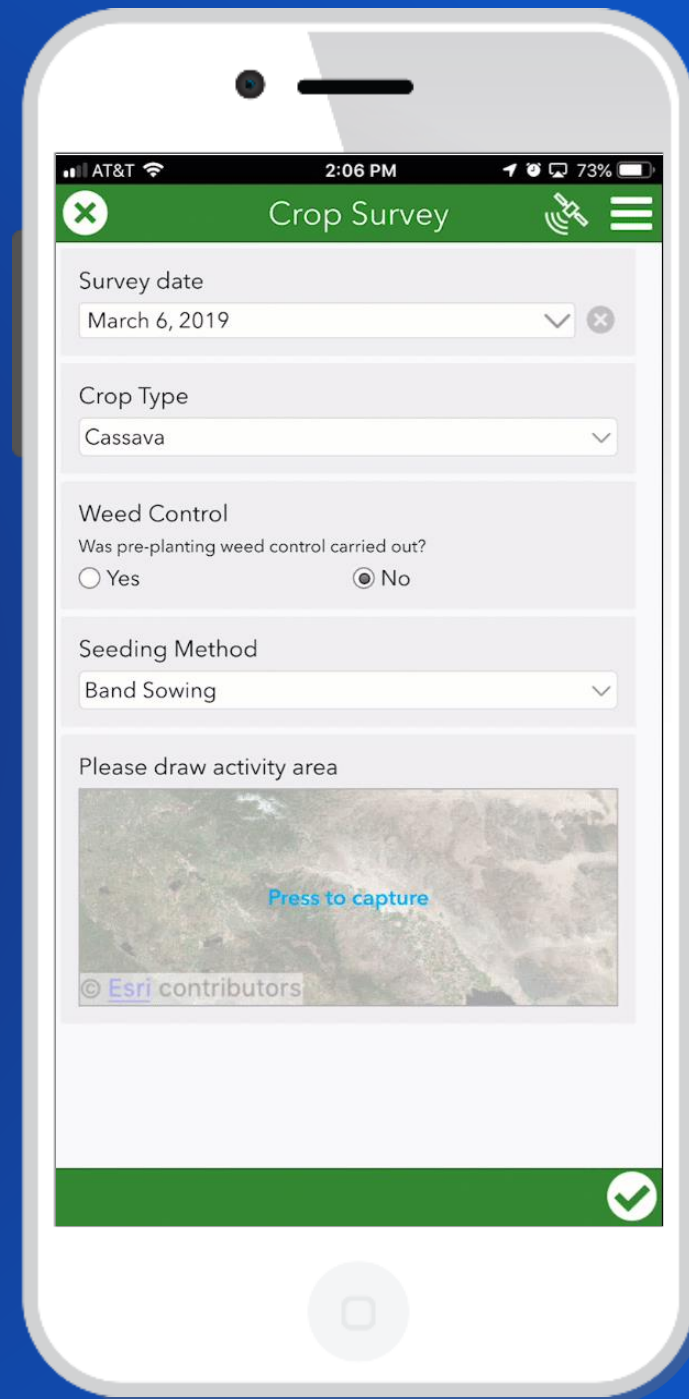
Form Centric Data Collection

## What's New

- Feature reports
- Photo Watermarking
- Polygon + line data capture

## What's Coming

- Feature report PDF output
- Web maps, mmpk's, VTPK's
- On-prem API/website setup
- Extensibility framework
- Project update notifications







# ArcGIS QuickCapture

Rapid data collection

## Capture

Perform data collection and send it back to the office from anywhere

A “big button” mobile app

Simplest way to capture field observations

At-speed data collection workflows





# ArcGIS QuickCapture

Rapid data collection

## What's New

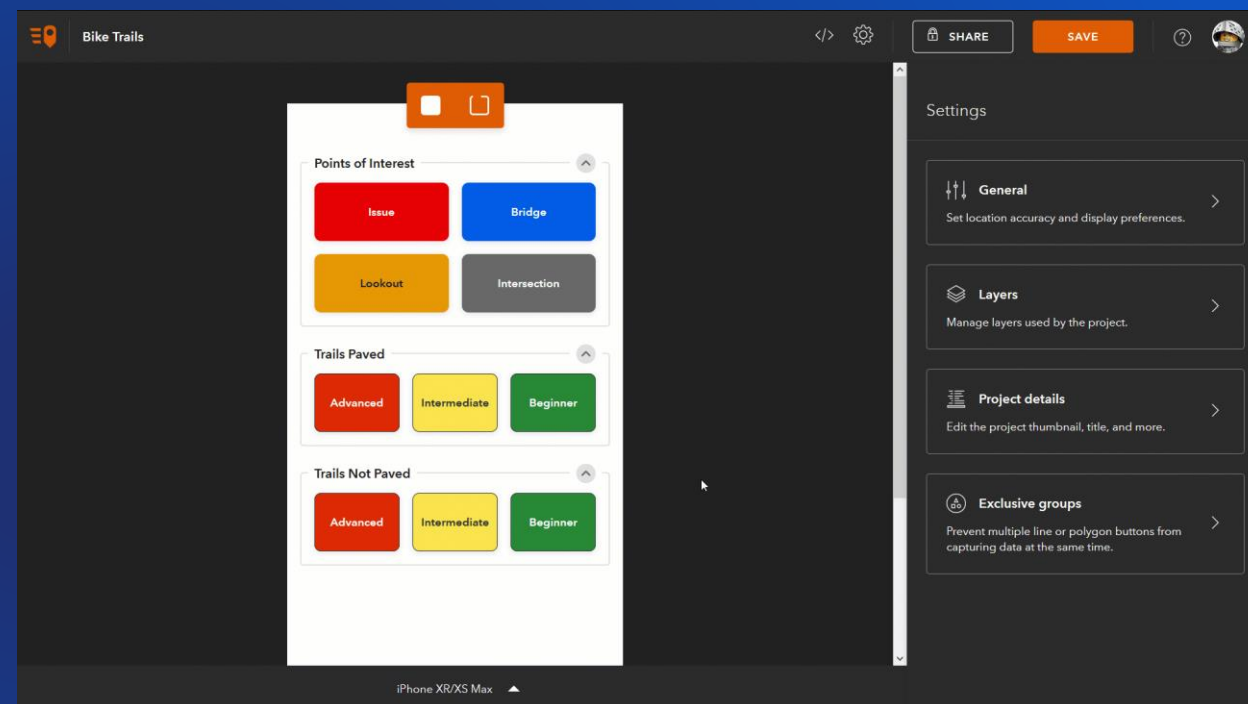
- App launch in July 2019
- Localized to support all languages
- URL scheme support
- Configure Exclusivity Groups in Designer

## What's Coming

- Configurable maps (offline and online)
- Side-by-side map view for tablets
- Configure User Inputs in Designer
- Public projects for crowdsourcing and citizen science initiatives

## Research

- Hey Quick! (voice operated commands)
- QuickCapture AI (integration with AI object detection)
- Integration with Android and Apple Watch





# Tracker for ArcGIS

Know what happens in the field

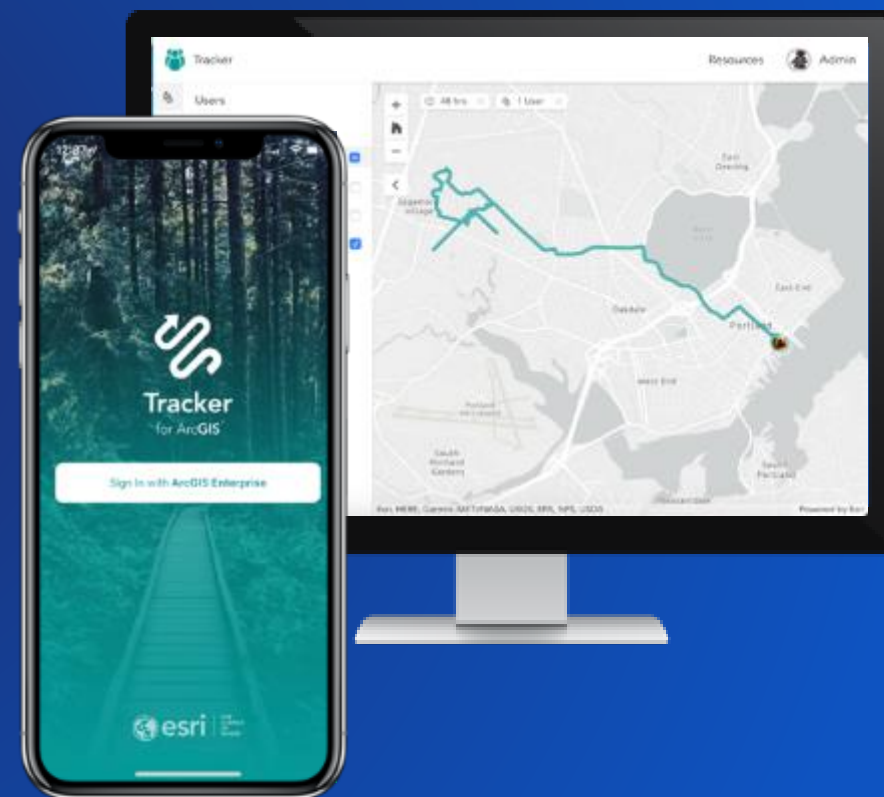
## Monitor

Know where workers are  
and see the progress of  
work in real-time

Share your location

Know where everyone is

Own your location data



Download on the  
**App Store**

GET IT ON  
**Google Play**





# Tracker for ArcGIS

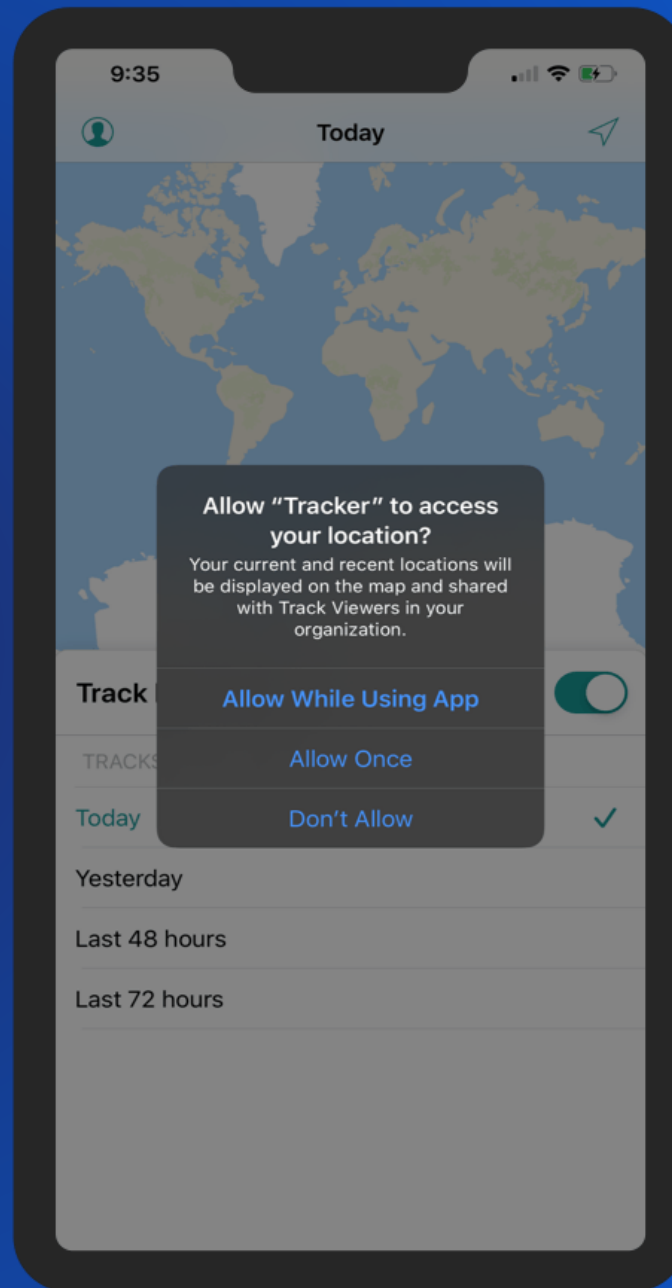
Know what happens in the field

## What's New

- App launch in July (ArcGIS Enterprise only)
- Updates to support iOS location privacy changes

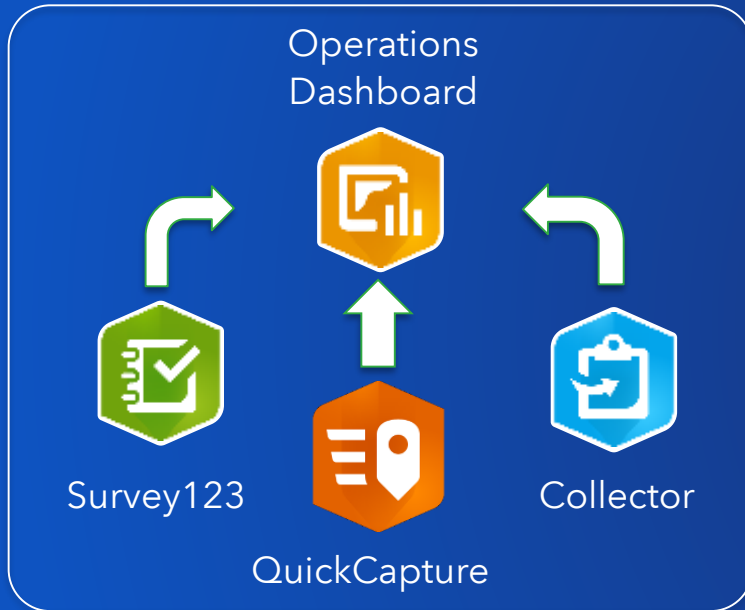
## What's Coming

- Availability in ArcGIS Online
- Updates to support Android location privacy changes
- Basic analysis + charting capabilities in the Track Viewer web app



# Enhance workflows by pairing apps

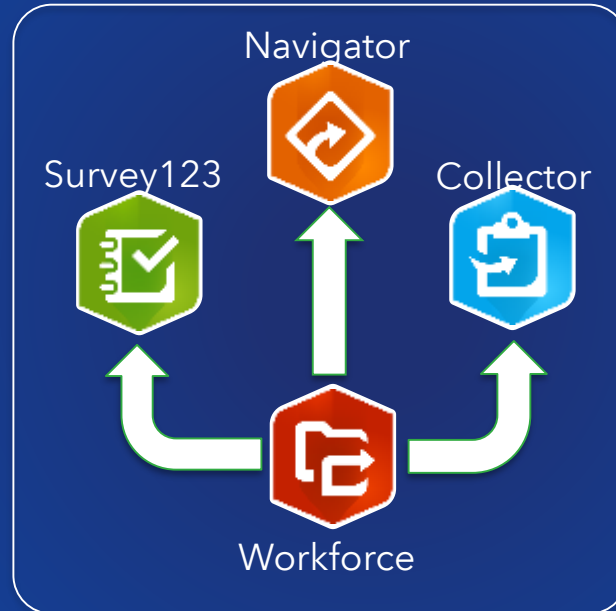
## Collect and Monitor



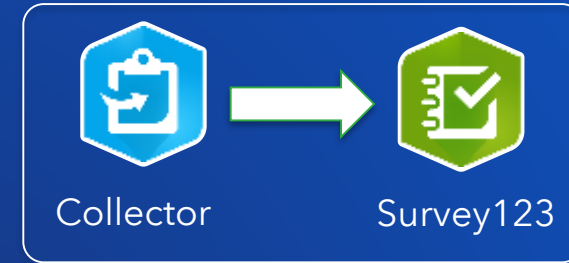
## Third Party Integrations



## Workforce Launchpad



## Maps + Forms



## Forms + Maps



## Prepare - Field



# Field Operations

## How can you enable Field Operations?

**Viewer**



Explorer is available to all user types, including Viewers

**Editor**



**Field Worker**



Includes Workforce, Collector, Survey123, and QuickCapture

**Creator**



**GIS Professional**



**Viewing**

**Editing**

**Authoring**

*Available in ArcGIS Online and Enterprise*



# Field Operations

How can you enable Field Operations?

## Field Worker User Type



Comes with Workforce,  
Collector, Survey123, and  
QuickCapture

Can use Explorer



## Add premium apps as needed



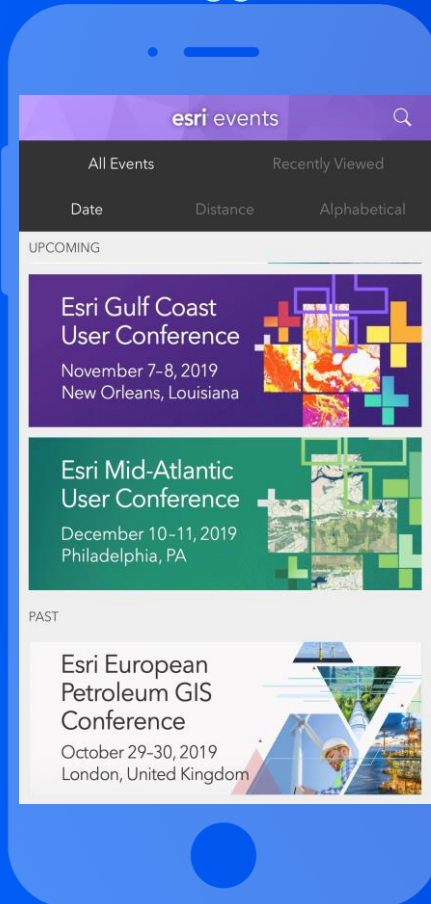
Navigator



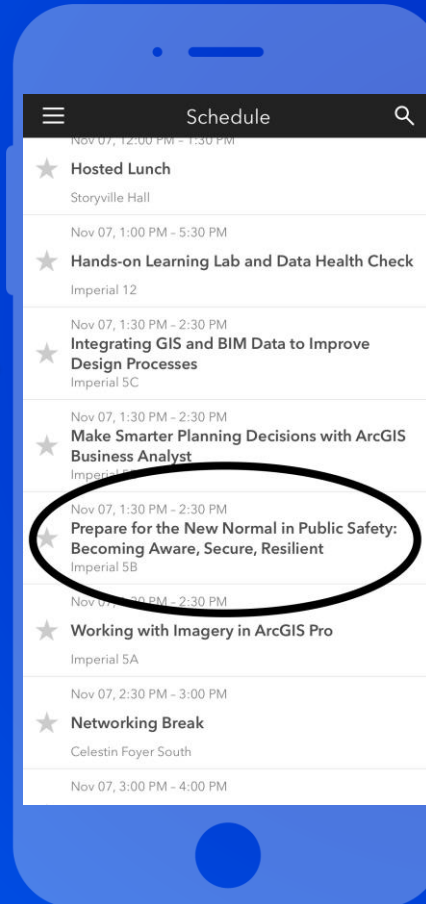
Tracker

# Give Us Your Feedback

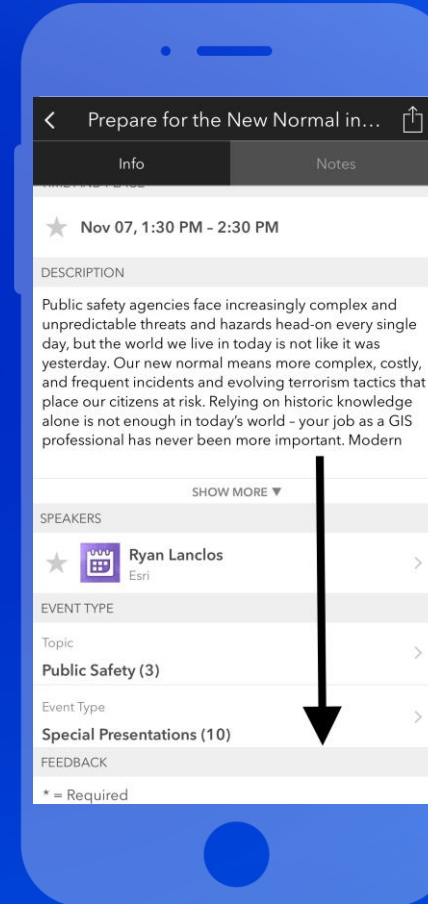
Download the Esri Events app and find Mid-Atlantic UC



From the schedule, select the session you attended



Scroll down below the description to find the feedback section



Complete answers and select "Submit"





esri

THE  
SCIENCE  
OF  
WHERE