



Web AppBuilder for ArcGIS

What's New and What's Coming

Adam Ziegler





WAB

New and
Enhancements

Easily Create Accessible Apps



Most of public apps are covered

Our commitment continues through incremental releases

New Features

New Theme

Pocket theme

New Widgets

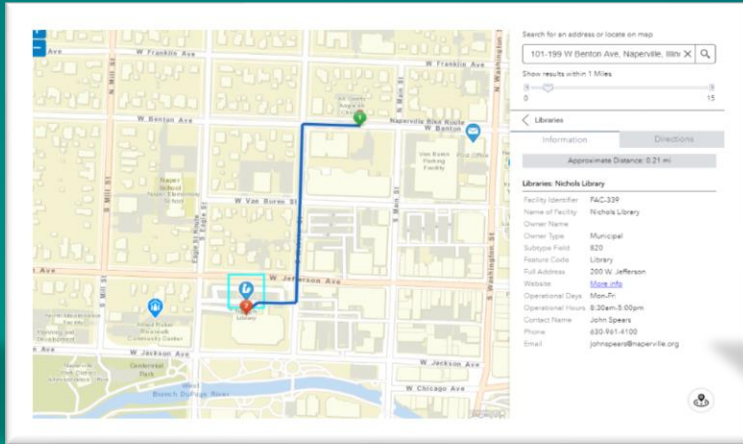
Business Analyst

Network Trace

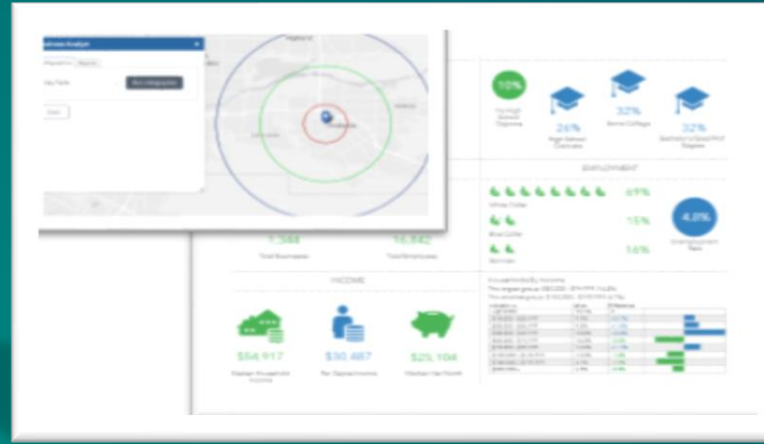
Threat Analysis

Visibility

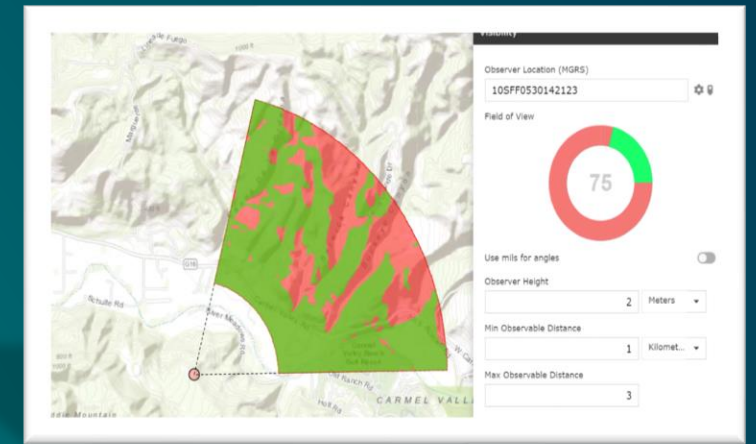
Cost Analysis



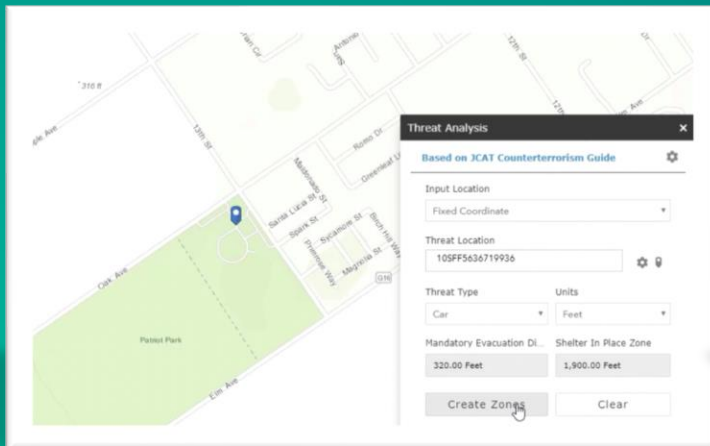
Pocket theme is for apps embedded in websites with only one widget



Business Analyst provides a way to generate Business Analyst Infographics and Classic Reports



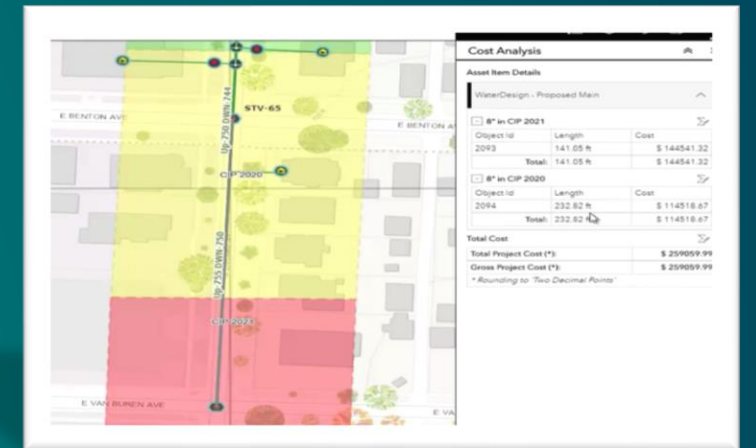
Visibility is about what is visible from an observer location



Threat Analysis is to identify safe distances and zones

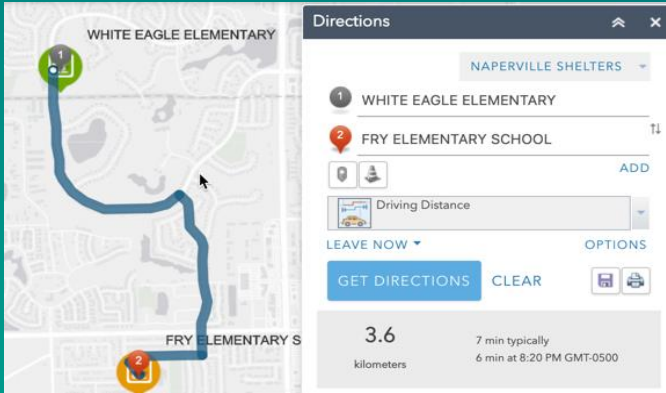


Network Trace is to use a GP service to trace a geometric network

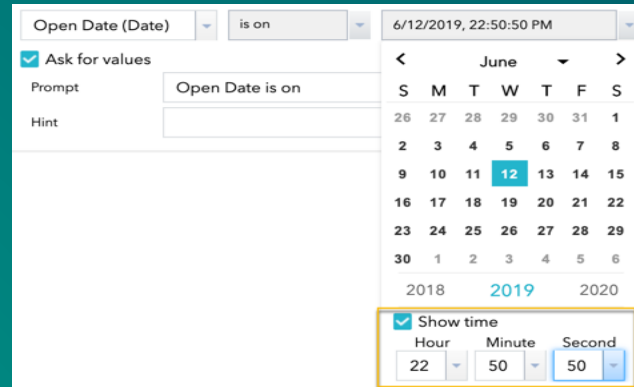


Cost Analysis assigns a cost factor and provide an overall cost

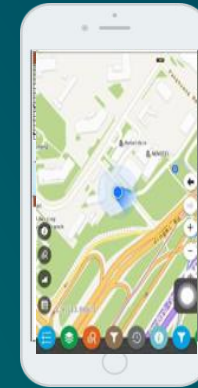
Key Enhancements



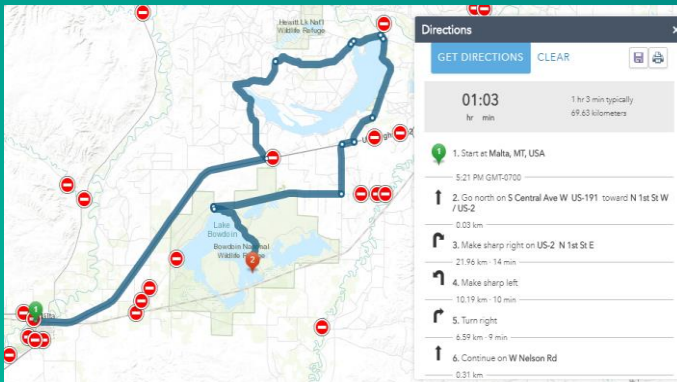
Add stops in Directions by searching feature layers



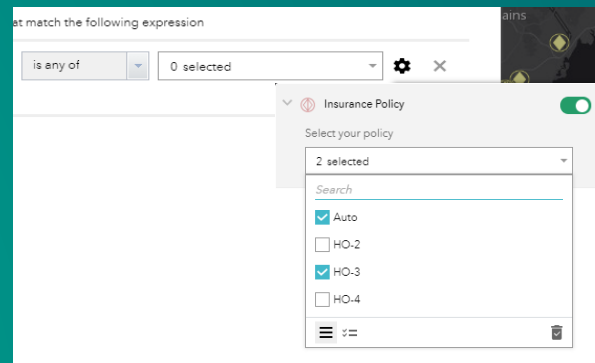
Perform a query on a combination of date and time



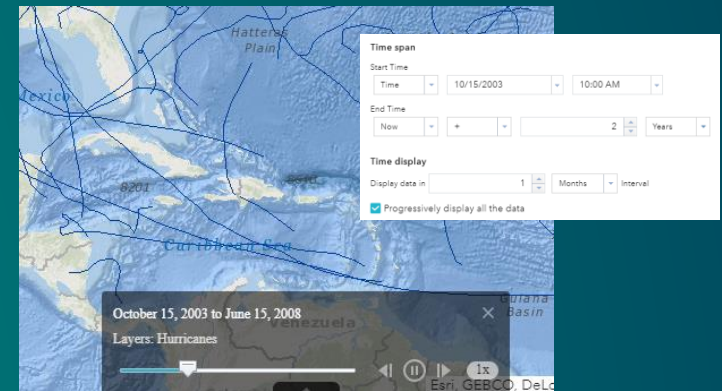
Display compass orientation and location accuracy on a mobile device with My Location



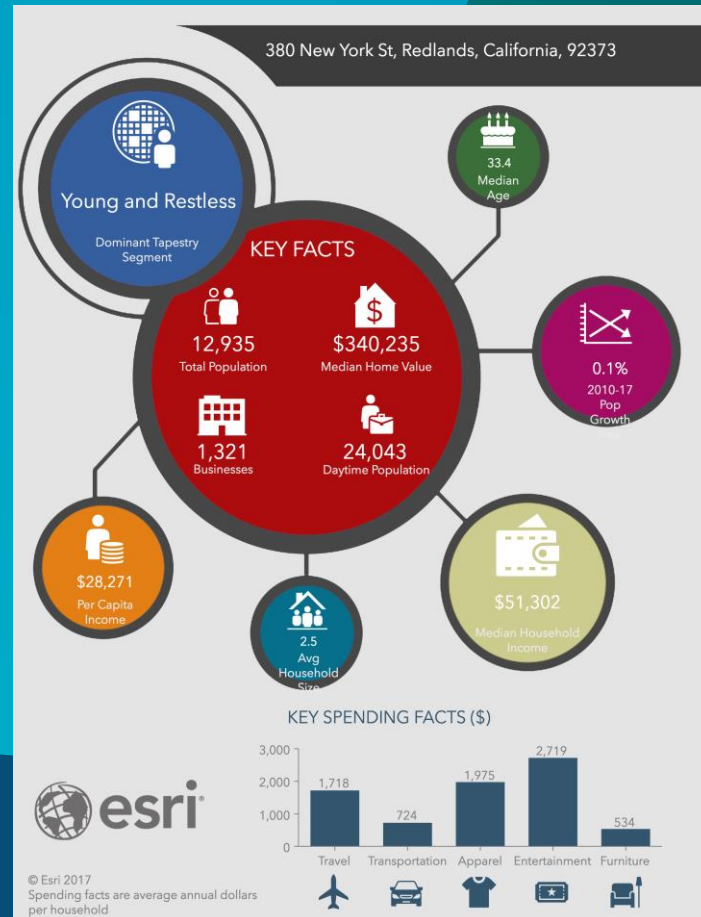
Barrier Layer in Directions



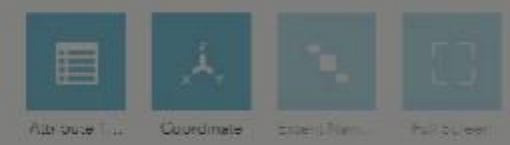
Select multiple values for a field in Filter



Set relative time span and intervals to animate live data with Time Slider

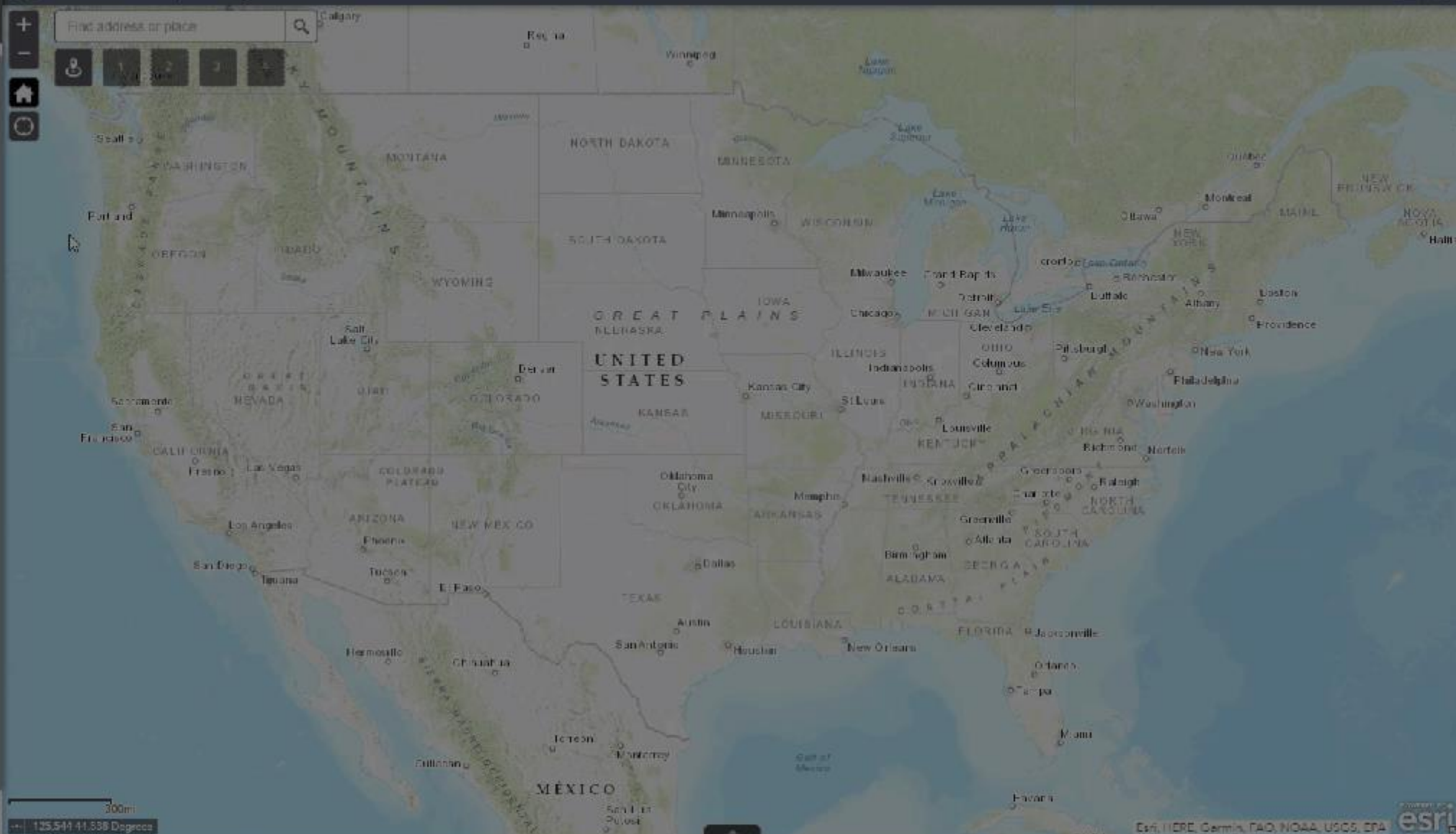


Business Analyst



Business Analyst Widget

with Web AppBuilder for ArcGIS



1000+

apps created daily

500,000

total apps created online



Web AppBuilder for ArcGIS

Create Your Own Web App, No Coding
Required



The background of the slide features a collage of various ArcGIS web application interfaces. These include a 'Directions' panel with a map and travel mode options, a 'Bookmark' panel with a list of locations, an 'Analysis' panel with various spatial analysis tools, a 'Measurements' panel with a map and measurement tools, a 'Print' panel with map title and layout options, and a 'Find' panel with a search bar and map. The interfaces are layered and tilted, creating a sense of depth and showcasing the versatility of the ArcGIS Experience Builder.

ArcGIS Experience Builder

The Next Generation of Web AppBuilder
on ArcGIS API for JavaScript 4.x

DISCOVER NEW YORK LANDMARKS

West from Bryant Park, 42nd Street meets Broadway at Times Square, the center of the theater district, where the massive neon signs and billboards have been cleaned up. Since the major cleanup launched by the city and by business interests like Disney, the ambience here has changed dramatically.

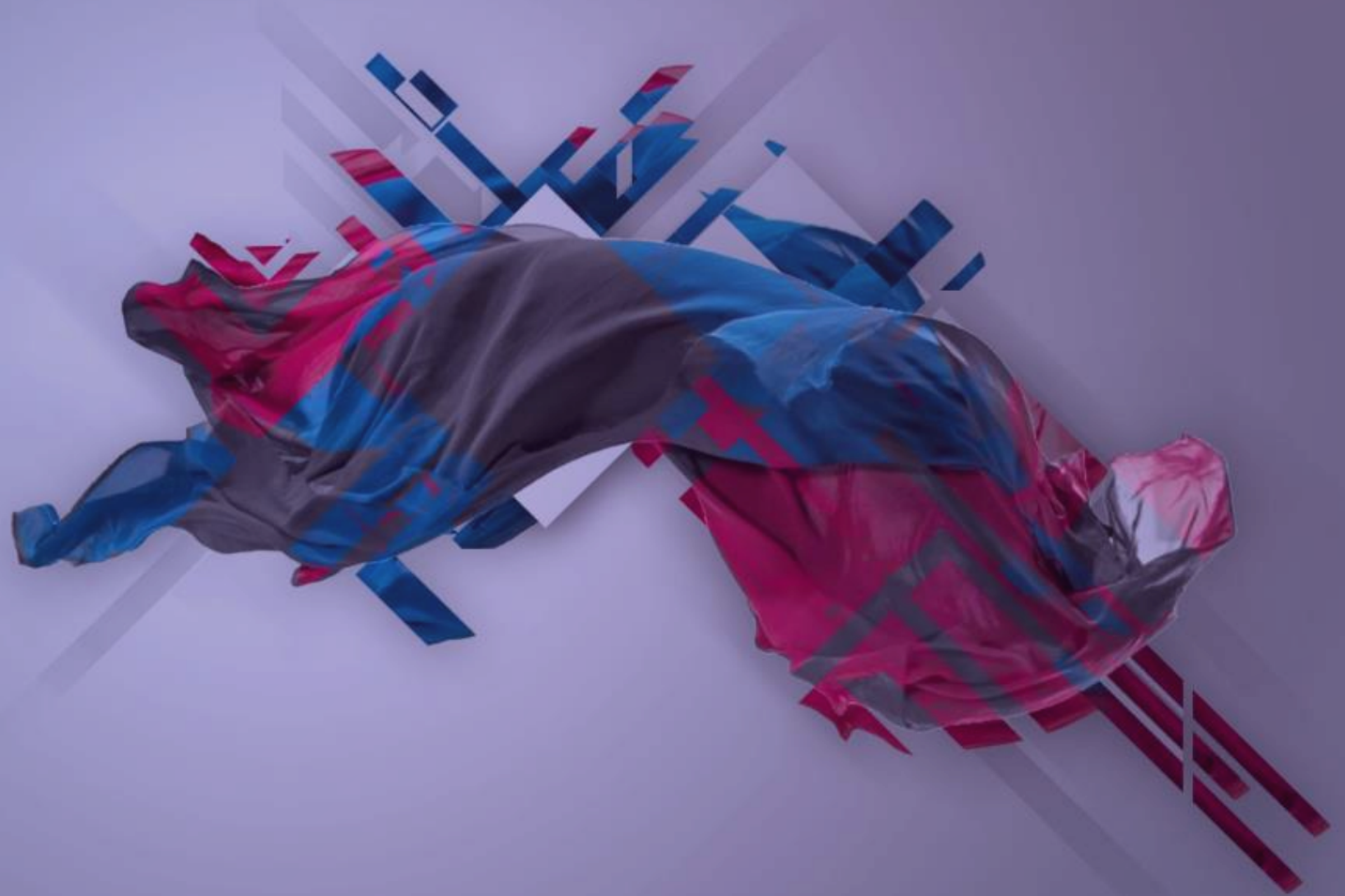
Why Experience Builder



LANDMARKS LOCATIONS

Technical Goals

Mobile First
Better Performance
Configurable
Extensible

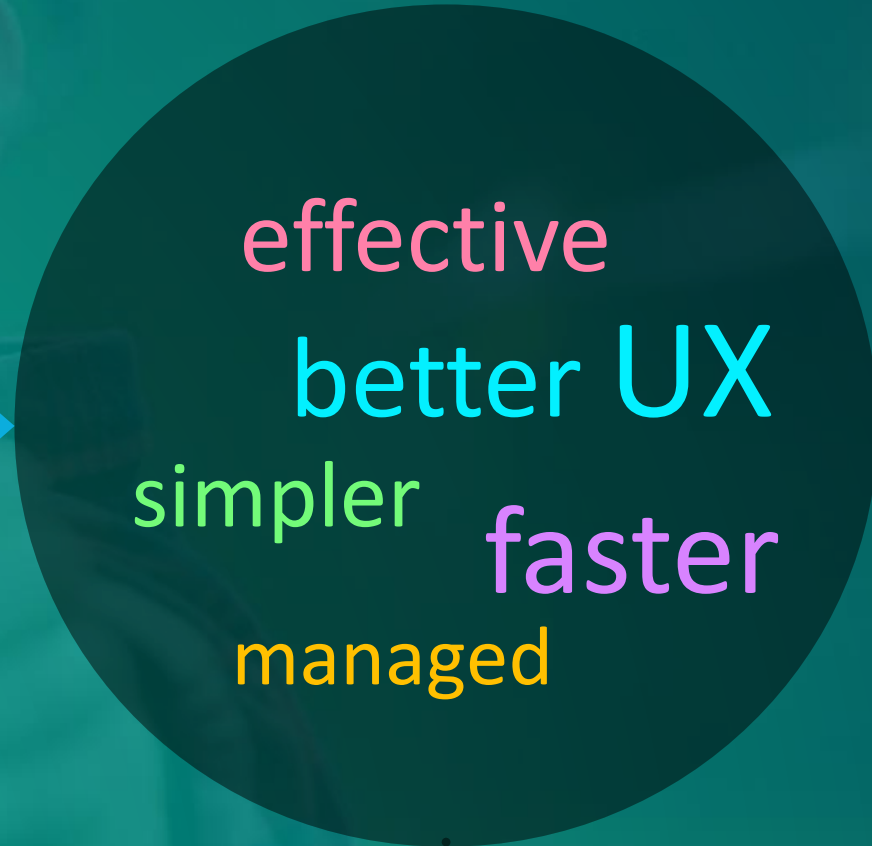


Business Goals

No coding



Focus on
business
needs



effective

better UX

simpler

faster

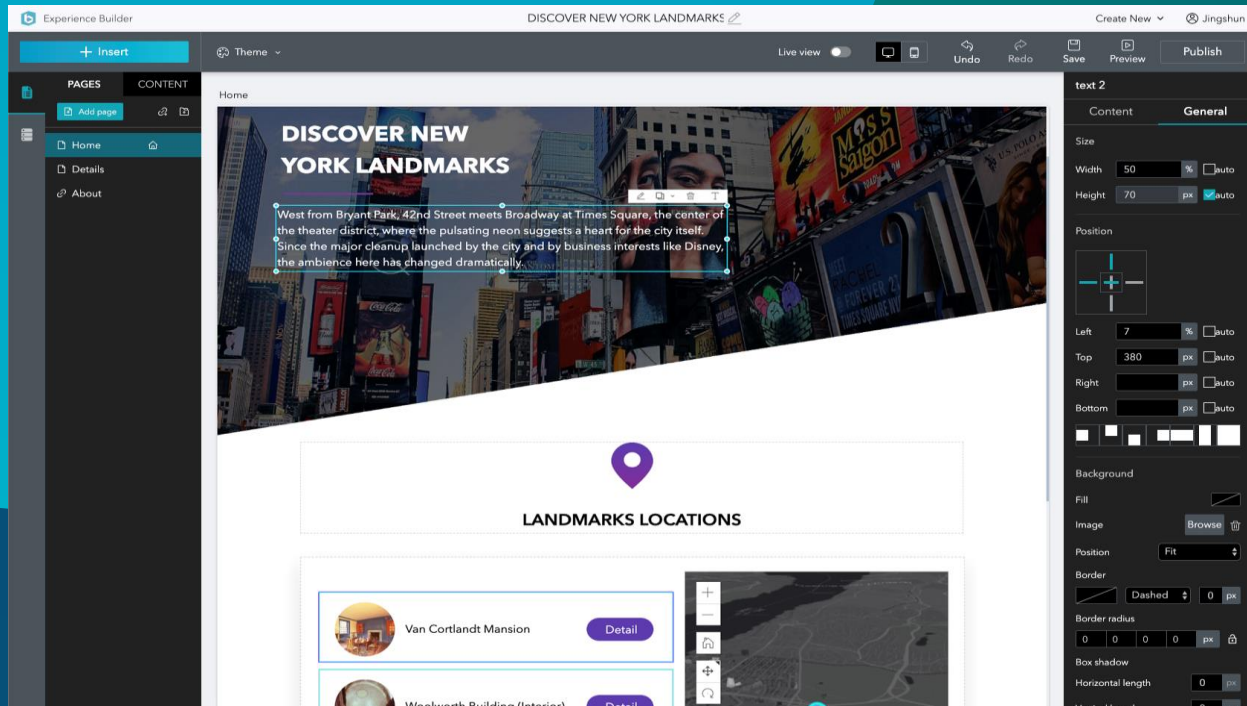
managed



Added
value

Key Features

- Mobile first design
- Variety of app interfaces:
 - non-map centric, or map-centric with one or many maps
 - fixed screen or scrolling screen
 - single page or multiple pages
- Easy drag and drop design
- Interact with both 2D and 3D in same template
- Performance optimization
- Access app usage statistics
- Extensible framework



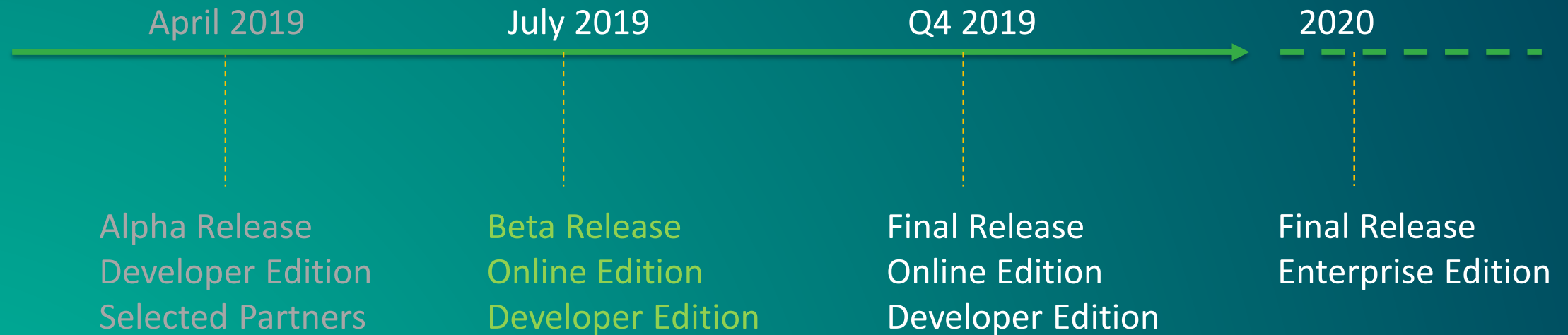
Experience Builder Demo

Experience Builder Product Offering

ArcGIS Online Edition
ArcGIS Enterprise Edition
Developer Edition

Creator or higher user type is required

Product Release Timeline



How to Access BETA

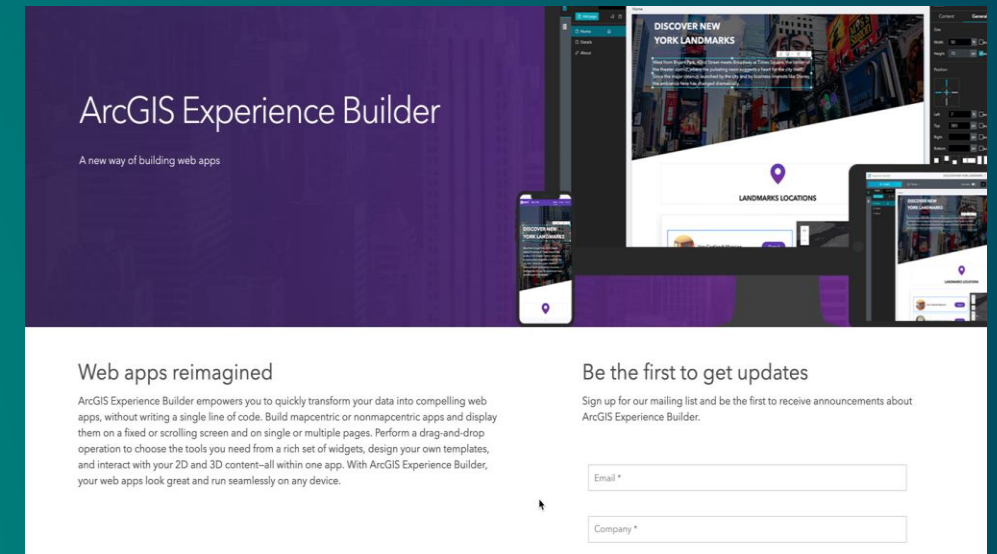
ArcGIS Online Edition

- experience.arcgis.com



Developer Edition

- download from Esri Early Adopter Community



Will ExB Reach Functions Parity of WAB

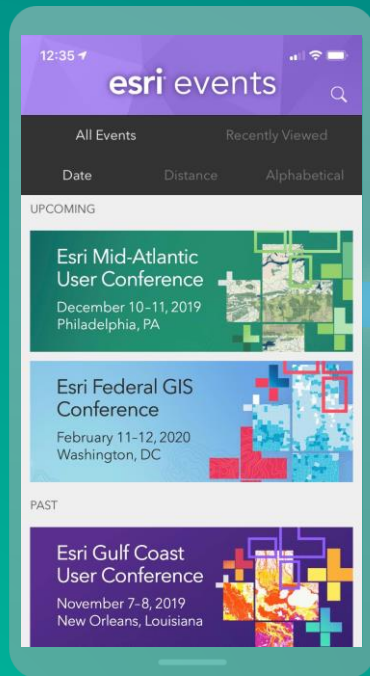
- Yes. Starting with the core and popular widgets

Is ExB Going To Replace WAB

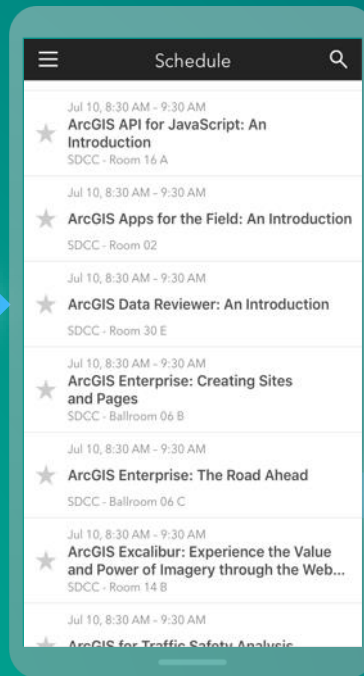
- There is no plan to replace Web AppBuilder
- Both builders will be running and maintained in parallel

Please Share Your Feedback in the App

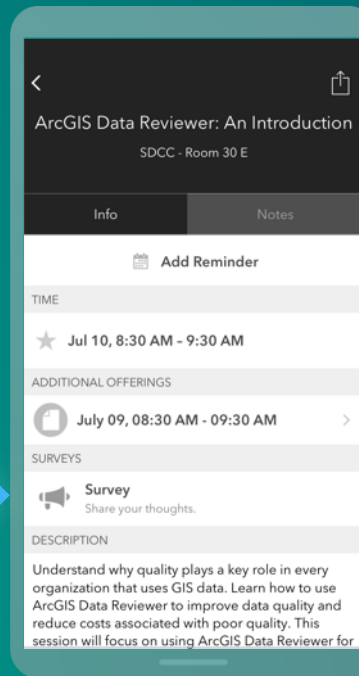
Download the Esri Events app and find your event



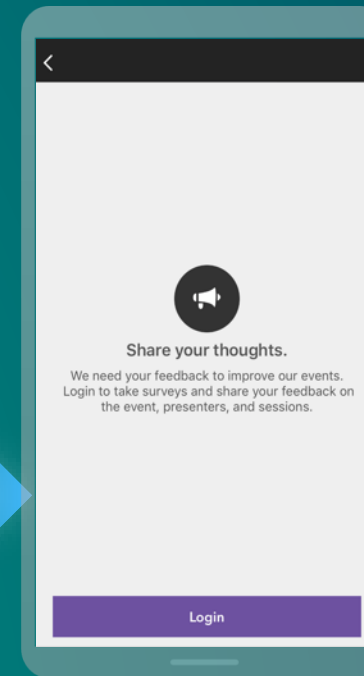
Select the session you attended



Scroll down to "Survey"



Log in to access the survey



Complete the survey and select "Submit"

