

ArcGIS Online: Debugging Third Party Integrations

Jorge Barrachina

ESRI EUROPEAN DEVELOPER SUMMIT

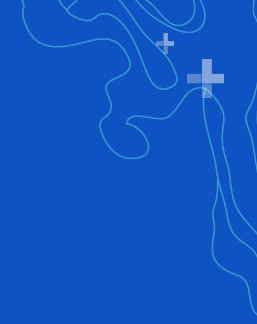
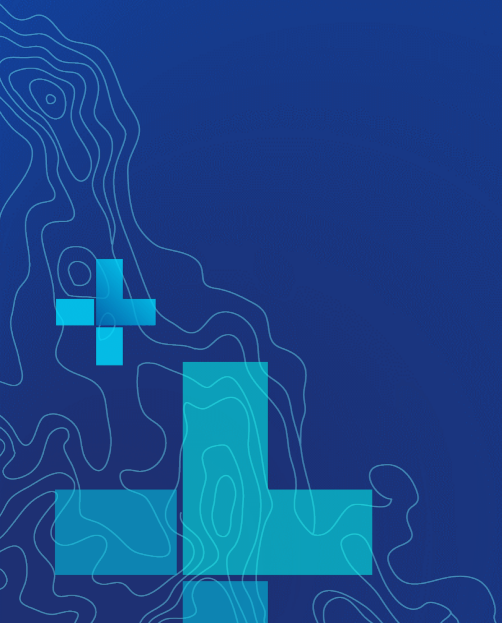


Agenda

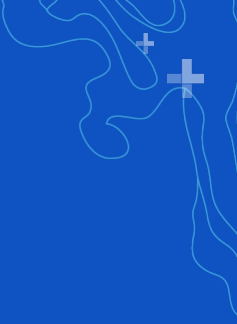
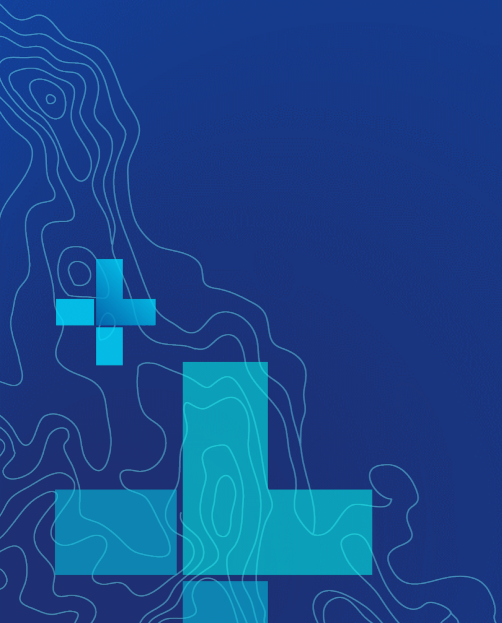
1. Why this talk
2. Guessing the requests flow to add new locator
3. JSONP
4. Preparing the Debugging Environment
 - Tools we are going to use

Why this talk

Third Party is important!



Guessing the requests flow to add new locator in ArcGIS Online



jorgedev

HomeGalleryMapSceneGroupsContentOrganization

Organization

OverviewMembersLicensesStatusSettings

SaveCancel

GeneralHome PageGalleryMapItemsGroupsUtility ServicesMember RolesNew Member DefaultsMarketplaceSecurity

Utility Services

Configure the utility services for your organization.

Printing

Configure your print service. Enter the URL of your print service, or leave blank to use the default printing service.

Esri Default

Example: https://webadaptor.domain.com/arcgis/rest/services/Utilities/PrintingTools/GPServer/Export%20Web%20Map%20Task

Geocoding

Establish the locators that members of your organization will have access to. Click Add Locator to reference a URL, specify a user friendly name, and set other properties. You can also reorder, configure, or delete your locators below.

Add Locator

Name

↓JuanjoLocator

↑ArcGIS World Geocoding Service

1. Default (bash)

Machineitor in ~

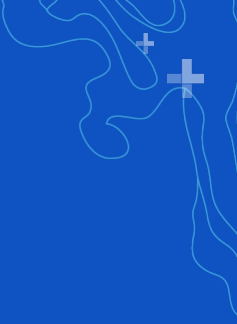
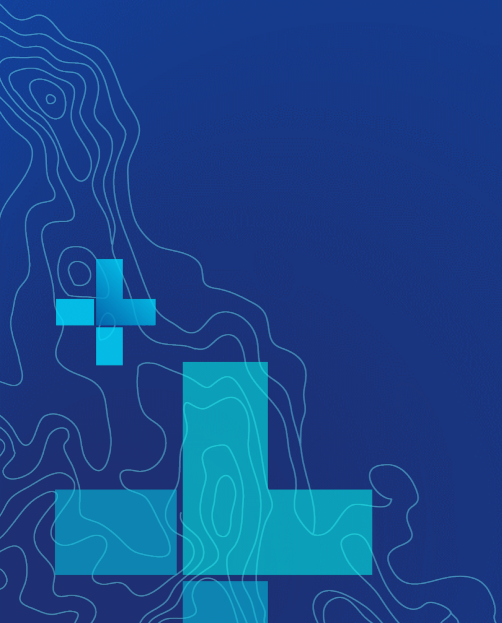
→ http-proxy -P https://mapabase.es -p 3000 -vvv

Default (bash)

Machineitor in ~

→ ngrok http 3000

Locator “Fake” Provision





```
const express = require('express');
var app = express();
app.use(compression({ threshold : 0}));
app.use(express.urlencoded({ extended: false }));
app.use(cookieParser());

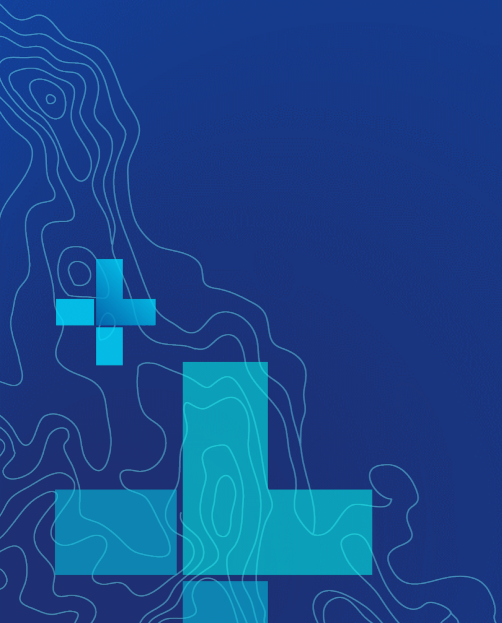
// Routers
app.use(`/arcgis/rest/services/locator/${CONFIG.name}/GeocodeServer`, geolocatorRouter);
app.use('/arcgis/rest/services', servicesRouter);
app.use('/arcgis/rest', restRouter);
app.use('/arcgis', indexRouter);
```



```
const cors = require('cors');

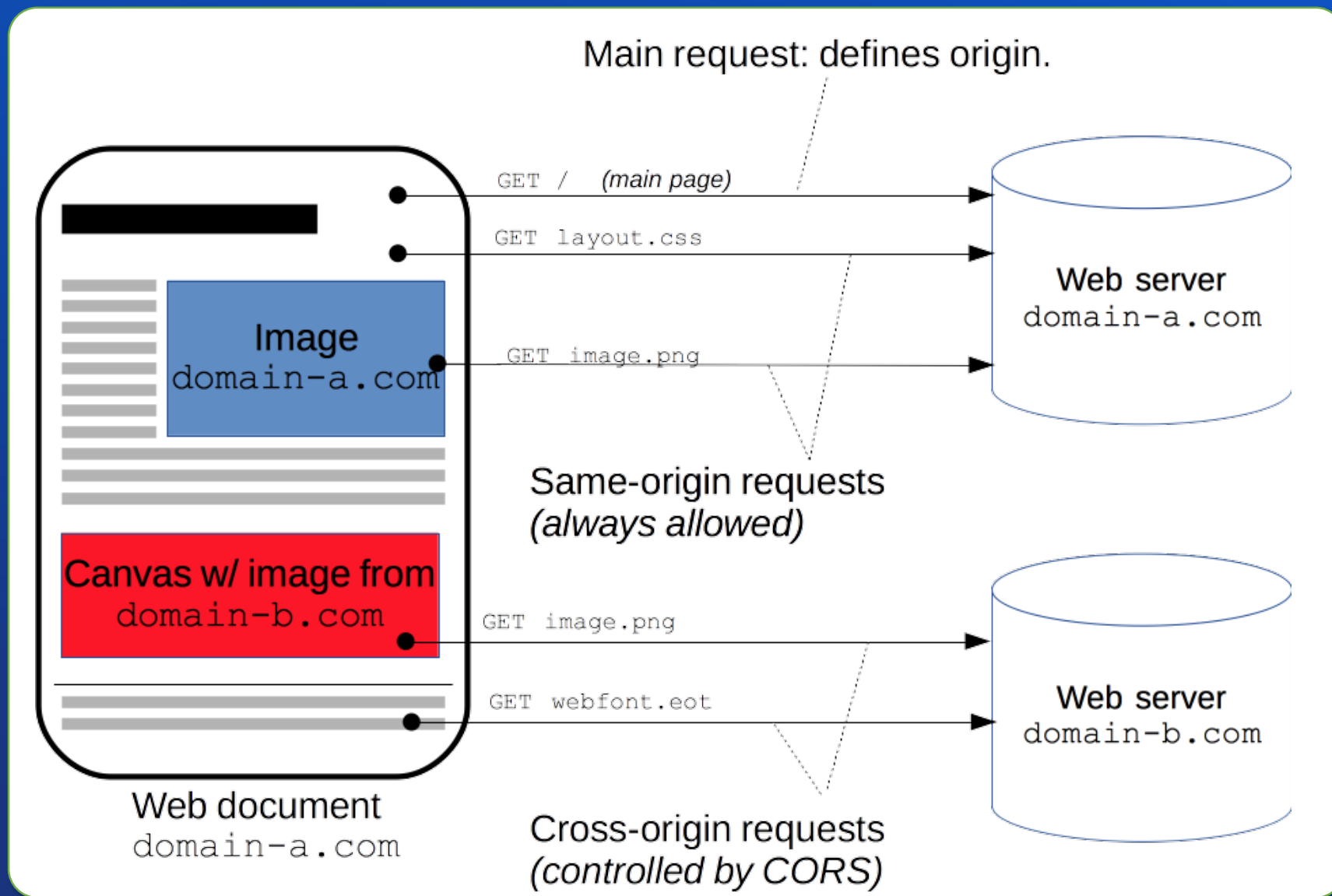
router.use(cors({
  credentials : true,
  origin: '*'
}));
```


Locator “Fake” Geocoder

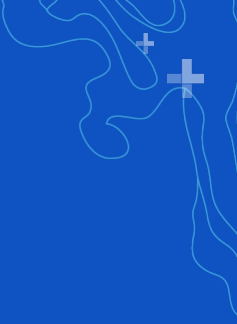
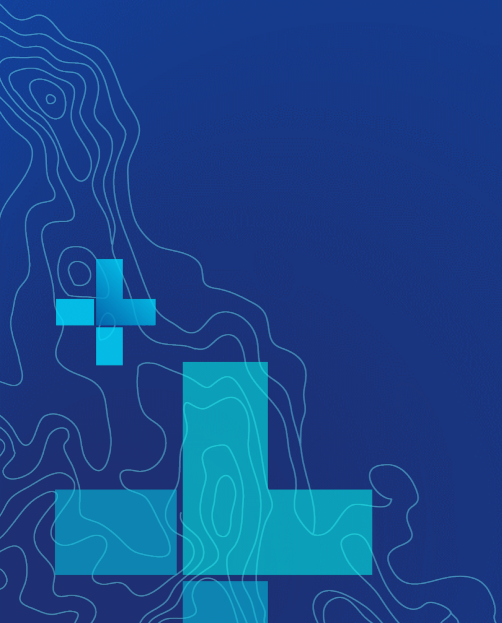


JSONP

✖ Failed to load http://localhost:8000/api/text: No without-jsonp:1
'Access-Control-Allow-Origin' header is present on the requested
resource. Origin 'http://localhost:3000' is therefore not allowed access.
If an opaque response serves your needs, set the request's mode to 'no-
cors' to fetch the resource with CORS disabled.



Let's see some JSONP examples

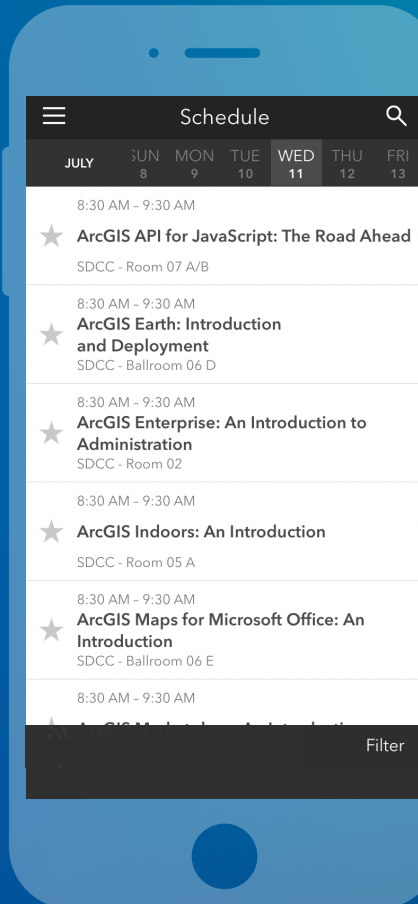


Please Take Our Survey on the App

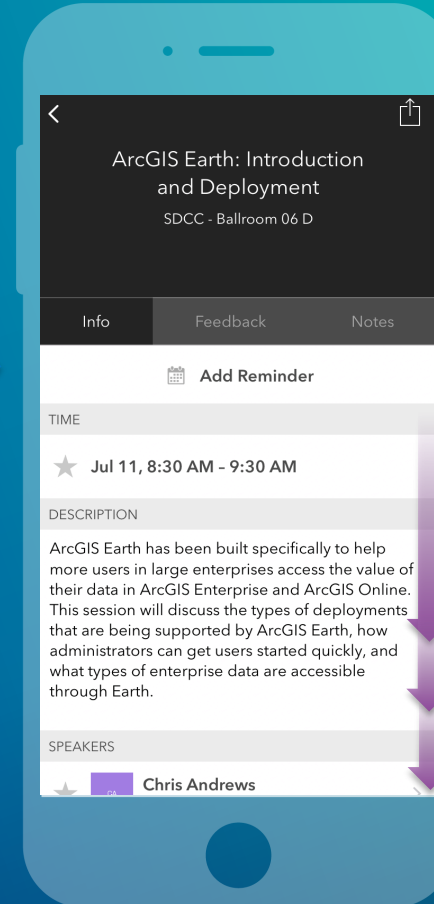
Download the Esri Events app and find your event



Select the session you attended



Scroll down to find the feedback section



Complete answers and select "Submit"

