

Lightning Talk Presentations – Emergency Management Operations

County of Butte

US Army Corps of Engineers

Philippines Red Cross

National Security and Public Safety Summit @ Esri UC

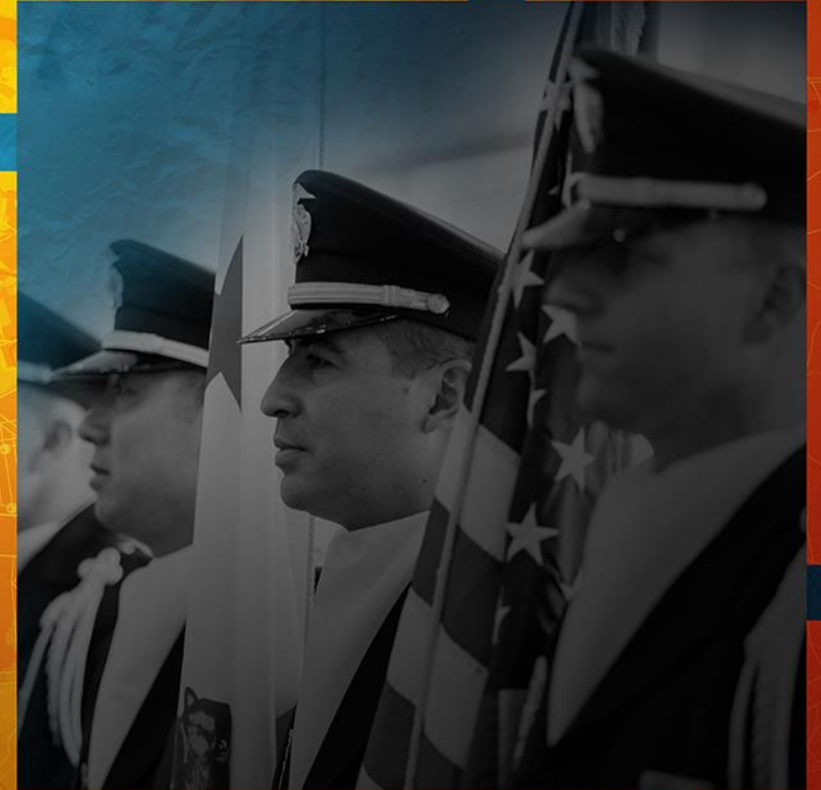


USACE Blue Roof Initiative

Colonel Dave Hibner, Operations Officer, US Army
Corps of Engineers

Rick Vera, Geospatial Program Manager, US Army
Corps of Engineers

Lightning Talk Presentation





**US Army Corps
of Engineers**



**US Army Corps of Engineers
Common Operating Picture (UCoP)**





US Army Corps of Engineers



Right of Entry

Operation Blue Roof

Welcome to the U.S. Army Corps of Engineers Right of Entry web application. This site allows you to apply for Blue Roof assistance through the use of a user friendly form which gathers information about your residence through the Right of Entry form. The Right of Entry (ROE) is a legal requirement that allows Corps workers to access your property and assess damage to your home. The ROE also allows contracted crews to work on your roof. Operation Blue Roof is for primary residences or permanently occupied rental properties with less than 50 percent structural damage.

Additional Criteria:



Right of Entry Online Application

If you wish to submit an online application, you can fill out a **Right of Entry** form by following the link below.

Upon successful completion of the Right of Entry form you will be given an ROE number . Save this number to reference your application status.

[Apply Online](#)

USACE Right of Entry Form

Select Event:

☐ Hurricane Michael

☐ Choose Event Later

Submit

Select Event:

- ☒ Hurricane Michael
- ☐ Choose Event Later

Certain requirements and conditions must be met in order for your home to be eligible for the Blue Roof program. The following questions help determine whether or not you qualify for the Blue Roof program and will help to avoid questions or confusion as we work to provide you assistance

Proceed

Decline

What state do you live in?

Florida

What County do you live in?

NOTE: if county/parish is not listed, likely not eligible at this time. Applicant should listen to hear if/when county/parish is added and can return to complete.

Bay

Is the property primarily used as a residence and not for commercial



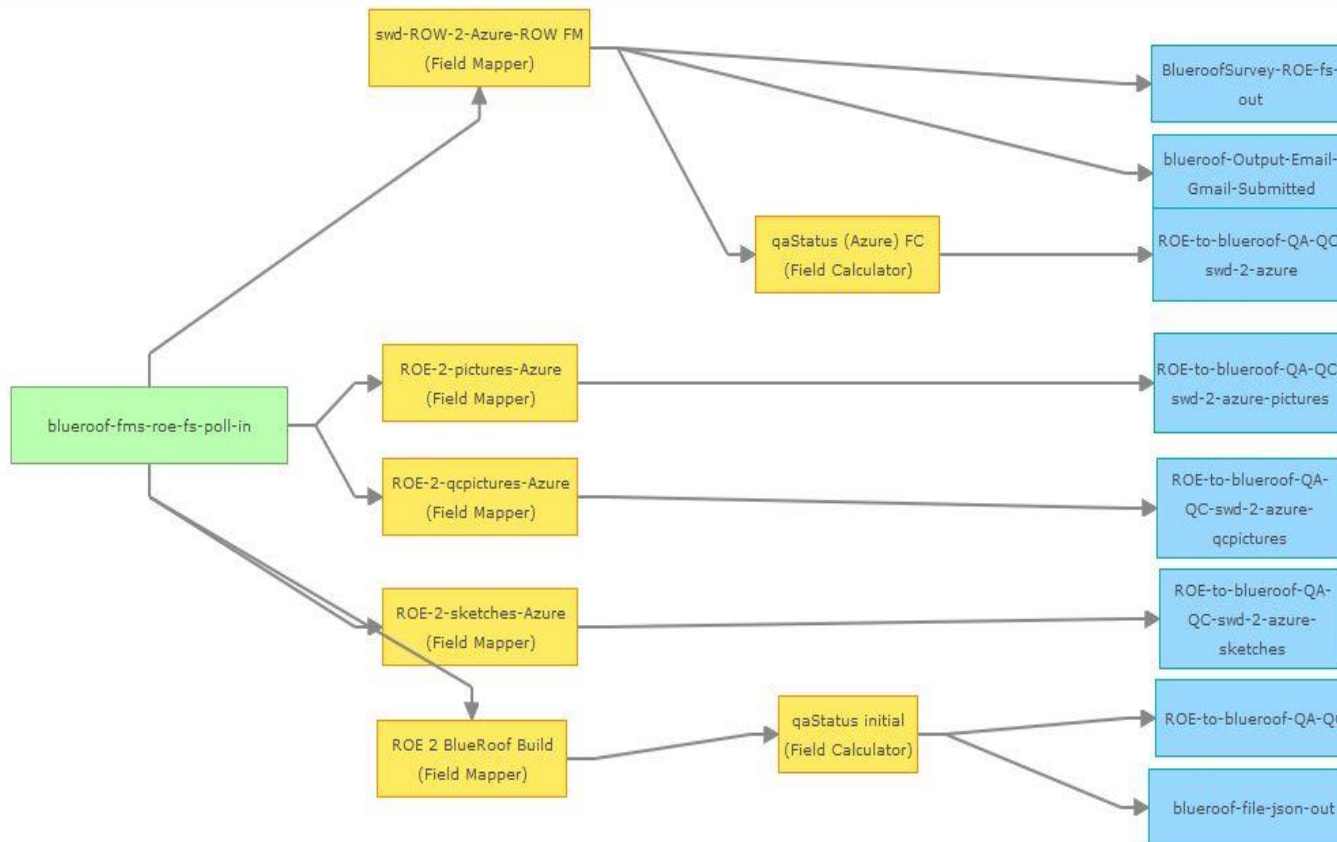
A map of the state of Florida with a grid overlay. A blue dot marks the location of Lynn Haven, Panama City, on the northern Gulf Coast. Other cities labeled on the map include Dothan, Valdosta, Waycross, Brunswick, Jacksonville, Gainesville, Ocala, Daytona Beach, Port Orange, Deltona, Titusville, Melbourne, Palm Bay, Fort St. John, Cape Coral, Fort Charlotte, Sarasota, St. Petersburg, Clearwater, Tampa, Lakeland, Orlando, Titusville, Deltona, Port Orange, Daytona Beach, Palm Coast, Jacksonville, Gainesville, Valdosta, Tallahassee, Panama City, Lynn Haven, Pensacola, Mobile, Biloxi, and Gulfport. The map is credited to Esri, HERE, Garmin, NGA, USGS, NPS, and Esri, HERE, NPS.

cancel your request.

ROE 2 BlueRoof initial

Publish Back

Status	In/Out	Count	Rate (over last 5 mins)	Edit Rate	Max Rate	Time Since Last	View Graph	Action
STARTED	In	0	0 /sec		0 /sec	10:47:38		
	Out	0	0 /sec		0 /sec	10:47:38		



Temporary Roofing

Operation Blue Roof

FMS 2.0 - QA Dashboard

6/14/2019

6/14/2019

Mission Data

Presidential Declaration Date
10/30/2018, 2:00 PM

Mission Assigned Date
11/1/2018, 9:00 AM

Current Roofs Estimated
7,253

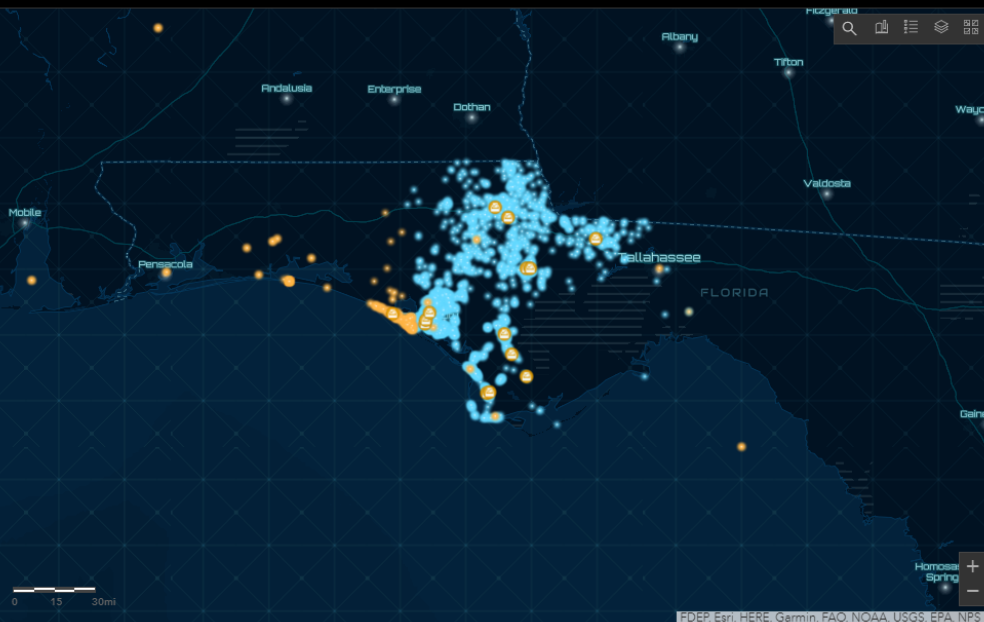
Assessments on Track to be Completed

ROE Collection Centers

DRC # 3 - University Extension Office	Active
2737 Penn Avenue Marianna, FL	
DRC # 7 - Gretna Elementary School	Active
706 Martin Luther King Blvd Gretna, FL	
DRC # 9 - Port Saint Joe Library	Active
110 Library Drive Port Saint Joe, FL	
DRC #10 - Sam Atkins Park	Active
NW Silas Green Street Blountstown, FL	
DRC #11 - Bay County Public Library	Active

Staffing

ROE Collector	1
Roofing QA	1



QA Created

0

QA Complete

0

Total QA Complete

7



100%

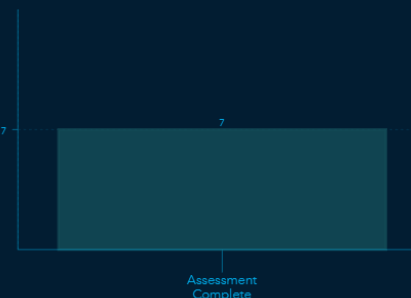
Assessments Complete

QA Status

Plastic Sheetting

45263

QA Completion Date



Assessment Complete

providing
tend from
adding the
y roofing
USACE.

ate

018

Blue Roof – Transformation

New Feature and Workflows

Existing Blue Roof Applications

Survey123



Sites



Workforce



Operations Dashboard



Web App Builder



Contractor Sites

Comprehensive Management Platform

Payment Portal

Work Order Management


Additional Features



Distributed Collaboration


(Linking Information)

[Home](#) [Gallery](#) [Map](#) [Scene](#) [Groups](#) [Content](#) [Organization](#)



USACE uCOP CorpsNet

The UCoP (USACE Common Operating Picture) mission is to provide USACE leadership, managers and staff with an authoritative, enterprise and highly customizable Agency-wide application for visualizing and analyzing all available data for USACE programs and projects for informed decision-making, assessing strengths and gaps and summary and detailed reporting.



Vera, Ricardo J
M3ECKRJV@SWD

[Home](#) [Gallery](#) [Map](#) [Scene](#) [Groups](#) [Content](#) [Organization](#)



Environmental Programs Story Map



Metadata



Disasters GeoPlatform

Providing geospatial data and analytics in support of emergency management



2018 Florence
FEMA



Community Lifelines
FEMA



Disaster Resources
FEMA

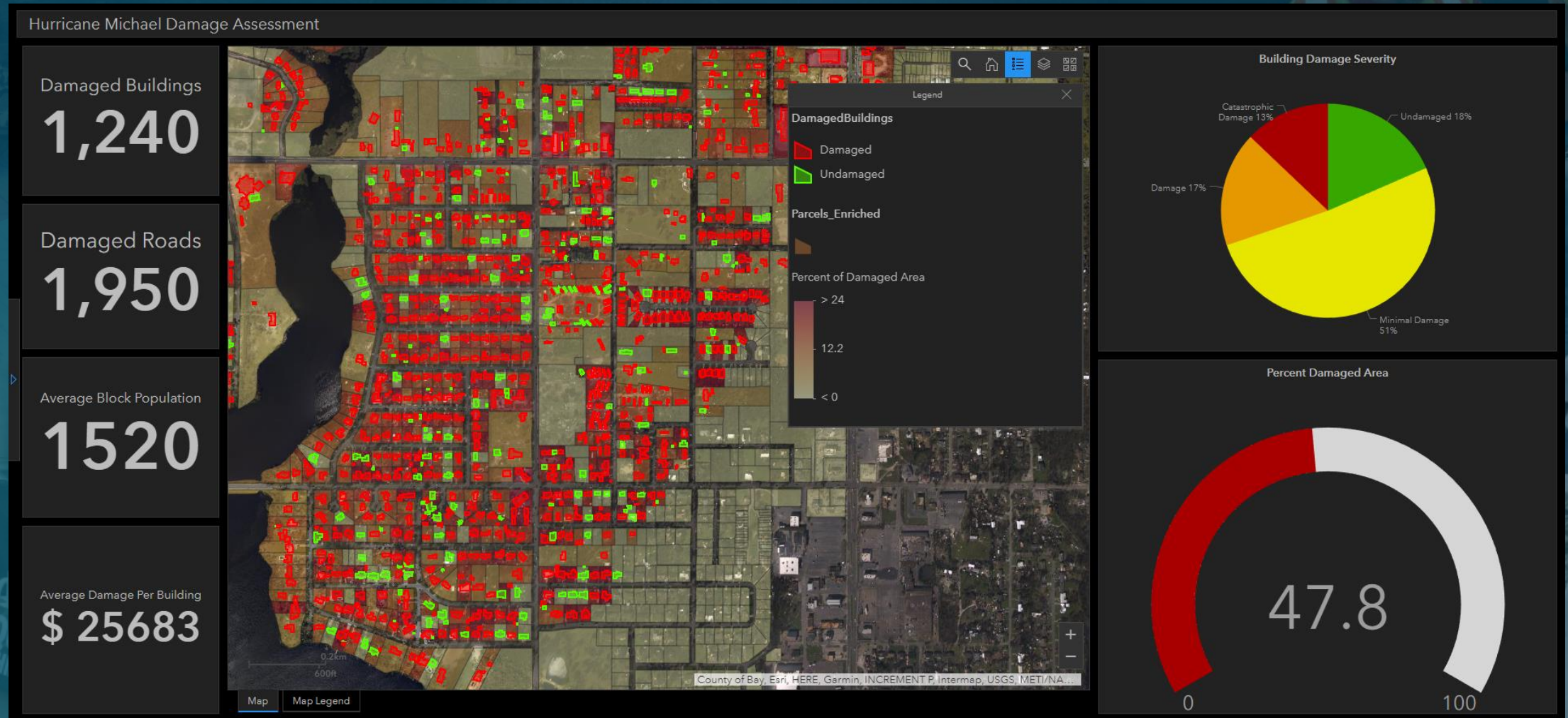


Disaster Events
FEMA

Building a Culture of Preparedness to Ready the Nation for Catastrophic Disasters

What's Next – GeoAI Integration

Imagery and Video



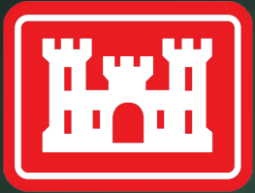
Moving Forward

Blue Roof, Debris, and Housing

Adapt and Transform



Keep Moving, Learning, and Understanding . . .



US Army Corps
of Engineers





US Army Corps
of Engineers



U.S. Army Corps of Engineers
Galveston District
Established in 1880

