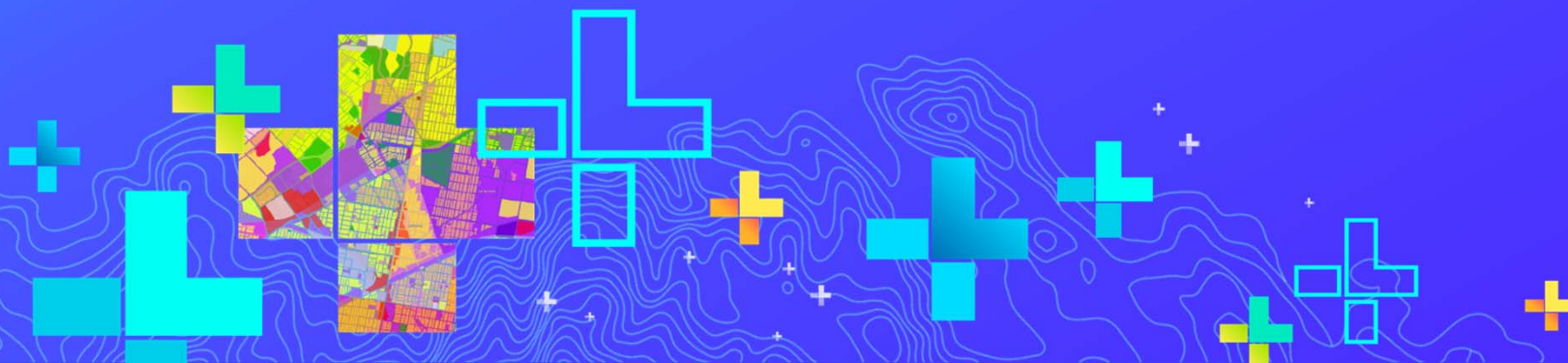




Esri Community Maps Program Best Practices For Contributing Data

Seth Sarakaitis and Mike Ridland
Community Maps Team

SEE
WHAT
OTHERS
CAN'T



First the Basics...

Esri Basemaps and the Community Maps Program

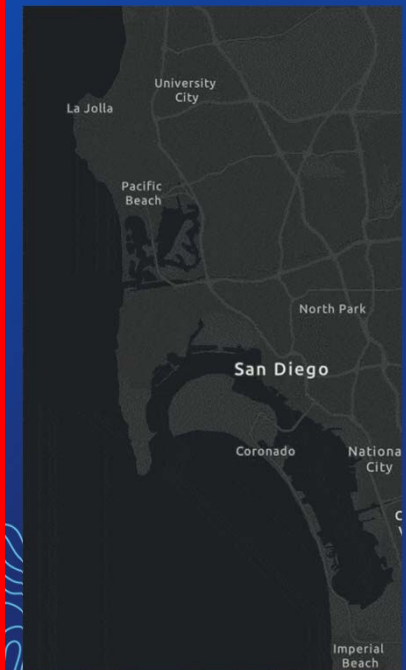


Community Maps Program – helps power the Living Atlas Collection

Goal: enhance foundation layers with rich, up to date data from the community

Community Maps for:

Basemaps



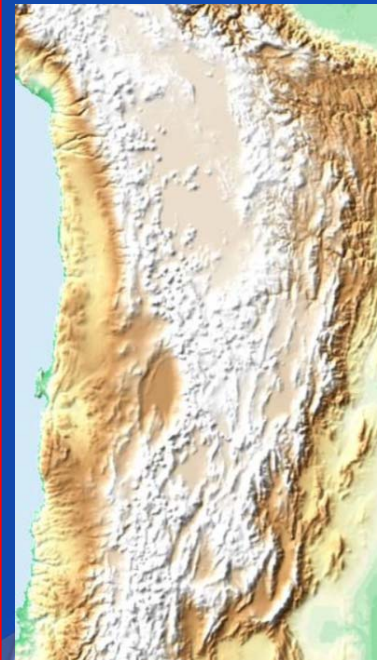
Imagery



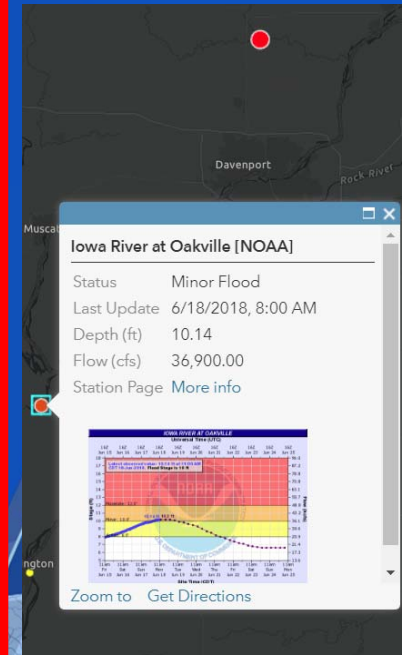
Addresses



Elevation



Stream Gauges



Audience Participation

- Which basemaps are the most popular?

- World Imagery **#1 at 120 BILLION tile requests in 2018**
- World Streets **55 Billion**
- World Topographic **50 Billion**
- Dark/Light Grey
- All of them!

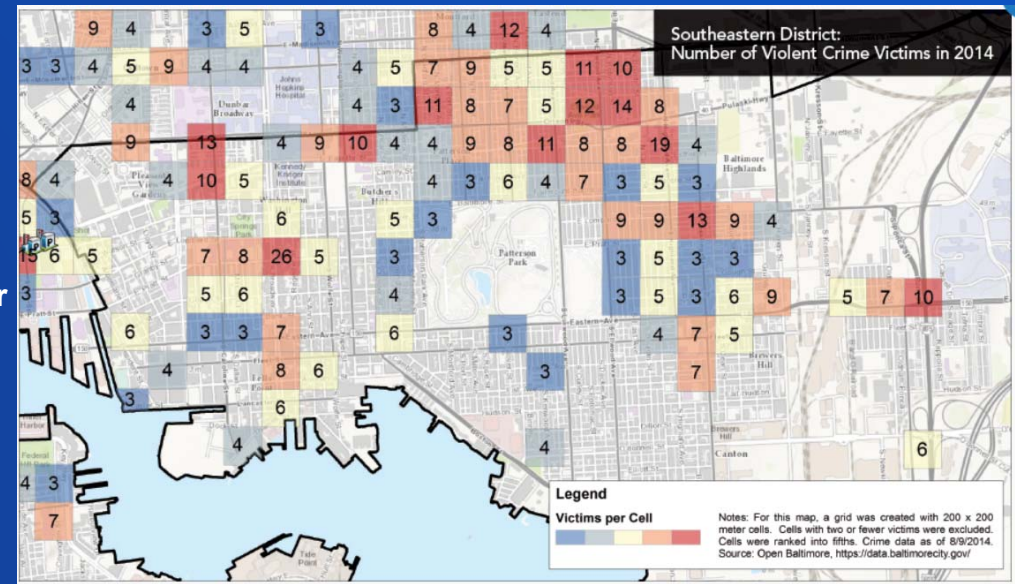
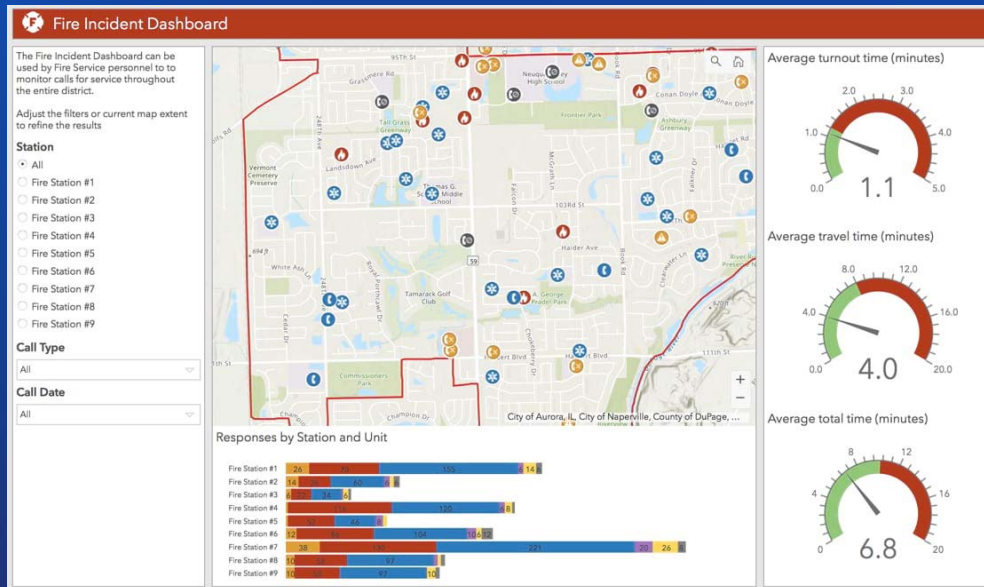
- How often are the basemaps updated?

- Every 6 months
- Every 3 months
- Every 3 weeks **Vector basemap globally regenerated every 3 weeks**
- Every week
- It Depends...



Using Basemaps

- Improve Basemaps = Improve maps and apps!
- Improve Maps and Apps = Improve Communication to your users (citizens or customers)
- Improve Communication = Improve Results



Community Maps Contributors are a part of this process!

Session Takeaways

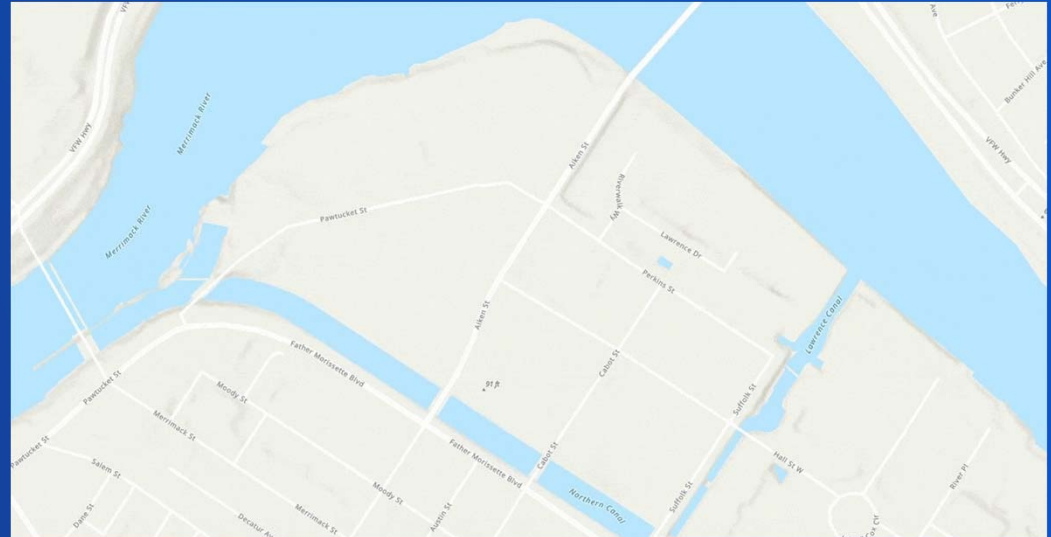
“Begin with the End in Mind” (Stephen Covey)

Key takeaways

1. Use the Community Maps Program to **improve the Basemap**

2. Participate in three ways:

- **Tell us** what's missing (Feedback)
- **Show us** what's missing (Edit)
- **Send us** what's missing (Share)



3. Remember <https://CommunityMaps.arcgis.com>

The CMP Homepage: <https://CommunityMaps.arcgis.com>

Community Maps Program Living Atlas of the World

Join the Community

Your input makes a difference! Join the community by providing feedback, creating large scale features, or sharing data layers and services. Your contributed data will be added to Esri basemaps, which are freely available to ArcGIS users as part of the ArcGIS Living Atlas of the World.

Provide Feedback

If you see an error in the map, draw a box around it and tell us what is wrong so we can fix it.

[+ More Details](#) [Give Feedback](#)

(Tell)

Edit Features

If you'd like to add detail for a special area of interest, create or edit features that we can add to the map.

[+ More Details](#) [Sign in Editor App](#)

(Show)

Share Data

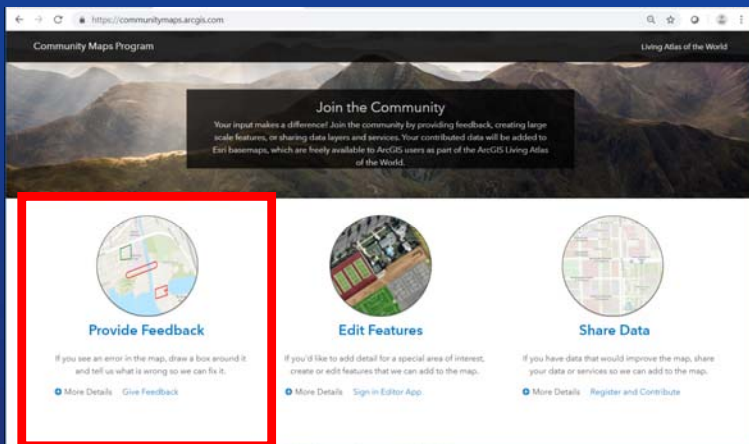
If you have data that would improve the map, share your data or services so we can add to the map.

[+ More Details](#) [Register and Contribute](#)

(Send)

Tell us what's missing: Use the Feedback Maps

- If you see an error in the map, draw a box around it and tell us what is wrong
- ArcGIS Online items and Maps that you use



Tell us what's missing: Use the Feedback Maps

- Draw a box and say what's wrong

The screenshot shows the ArcGIS Vector Basemap Feedback interface. The 'Edit' button is highlighted with a red box. A red arrow points from this box to a red rectangle drawn on the map, labeled '1. Draw Box'. A feedback form titled 'Topographic Map Feedback' is open, with the 'Description of Error' field containing the text 'Street name incorrect.....', labeled '2. Complete Form'.

ArcGIS ▾ Vector Basemap Feedback

Details Edit Basemap Share Print Measure Find address or place

About Content Legend

Legend

Vector Map Feedback - Draw Polygon to Add Comment

Closed Issue

Open Issue

Topographic Map Feedback

Type of Change: Modify Feature

Description of Error: *Street name incorrect.....*

Status: New Comment

Notes from Esri

Which Map?:

Display Status: Open Issue

1. Draw Box

2. Complete Form

Tell us what's missing: Use the Feedback Maps

The screenshot shows the ArcGIS Vector Basemap Feedback interface. The map displays a street grid with a red polygon highlighting a specific area. A feedback popup window is open, displaying the following information:

Feedback: Street name incorrect. correct name oleander ave

Type of Change	Modify Feature
Description of Error	Street name incorrect. correct name oleander ave
Status	Planned for Future Update
Notes from Esri	Changes will first be visible on the Vector Basemaps
Which Map?	Multiple
Display Status	Open Issue

[Zoom to](#)

3. Esri Curator Reviews and Acts

Audience Participation

- How many global feedback items are received in typical month?
 - 250 items
 - 125 items
 - 75 items
- What happens to these items?
 - Updated in Esri Basemap database
 - Sent to Commercial Data Provider
 - Some are Rejected
 - All of the above!
- What is the 'best' feedback?
 - Concise and specific details
 - Include a relevant URL or mention of a map where the feature is seen
 - Give your contact info
 - All of the above

Providing Feedback **Best Practices**

- **Do's**

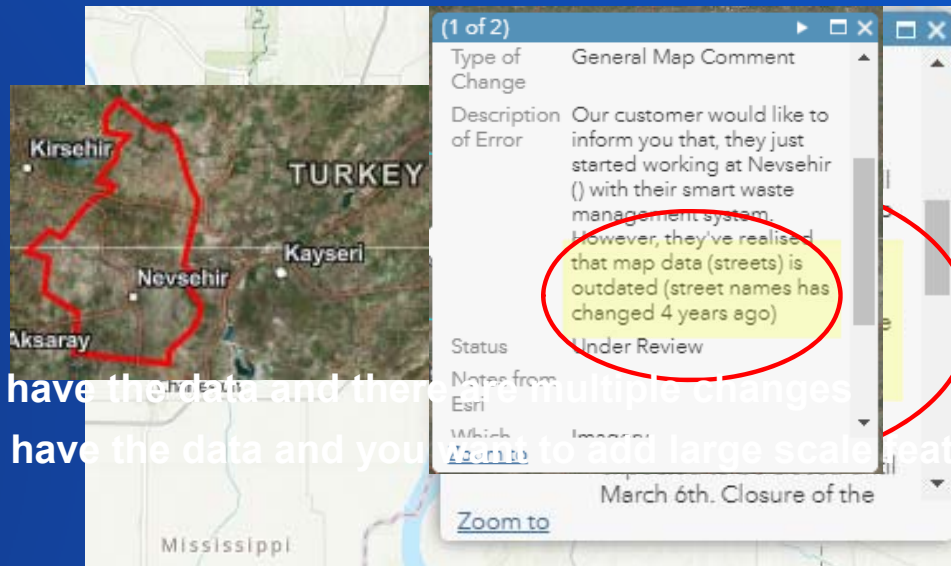
- Send a few quick edits and not entire regions
- E.g., Wrong building or street name, Missing new subdivision, Blurry imagery section
- Provide as much detail as possible

- **Don'ts**

- Send vague suggestions
- Send operational updates

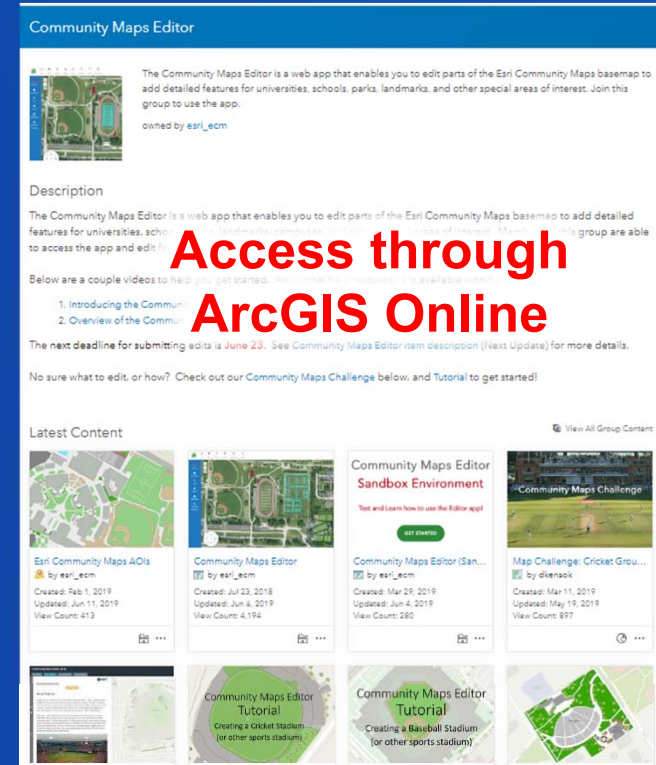
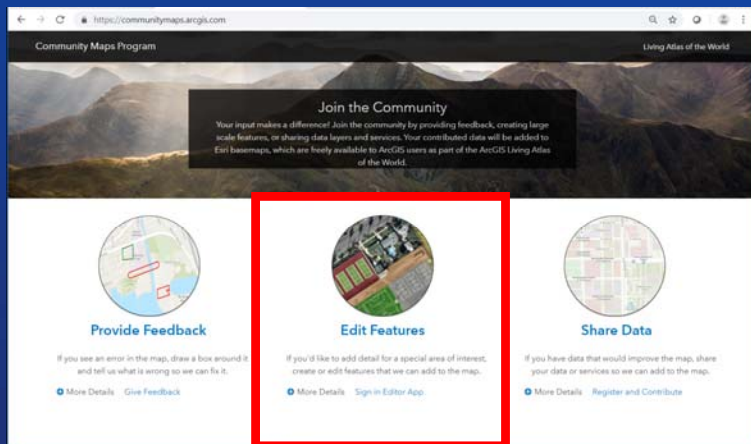
- **Tips:**

- Use Contributor App if you already have the data and there are multiple changes
- Use Editor App if you don't already have the data and you want to add large scale features

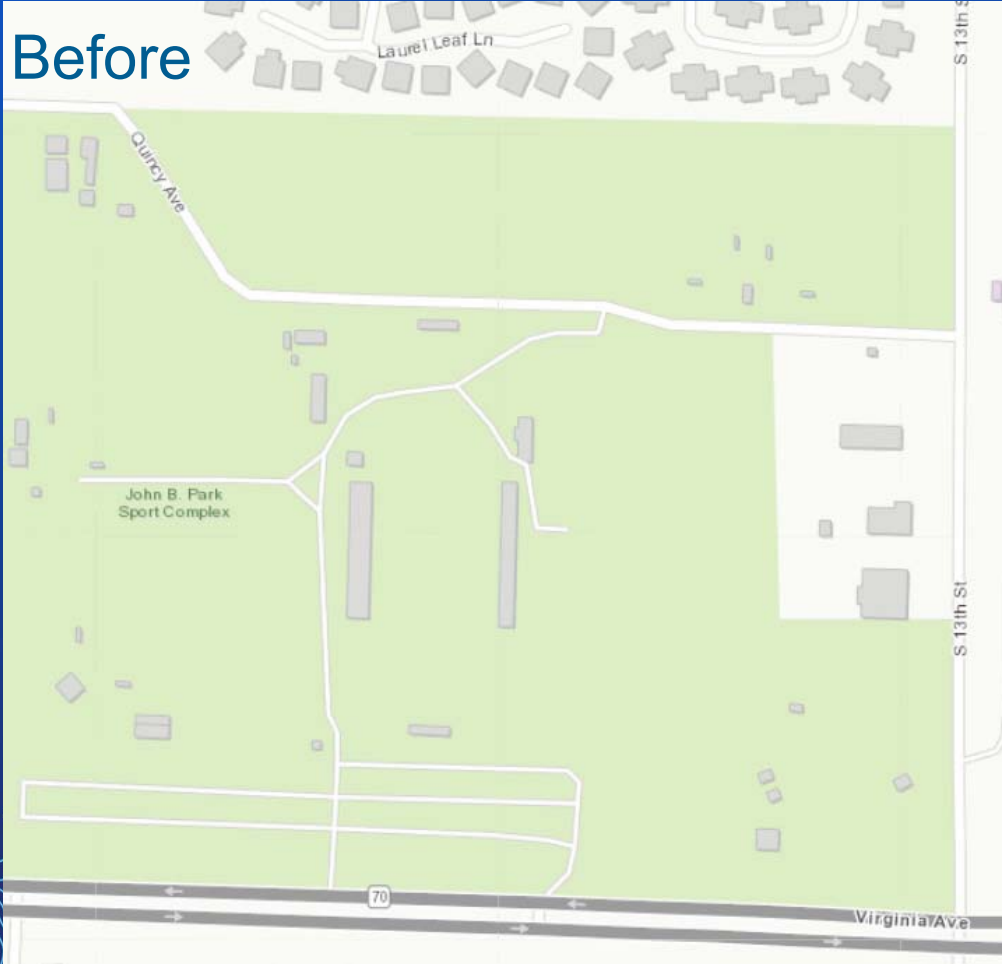


Show us what's missing: Use the **Editor App**

- If you want to add detail, create (or edit) features that we can add to the map
- Requires ArcGIS Online Organizational Account
- Web app for building basemap data

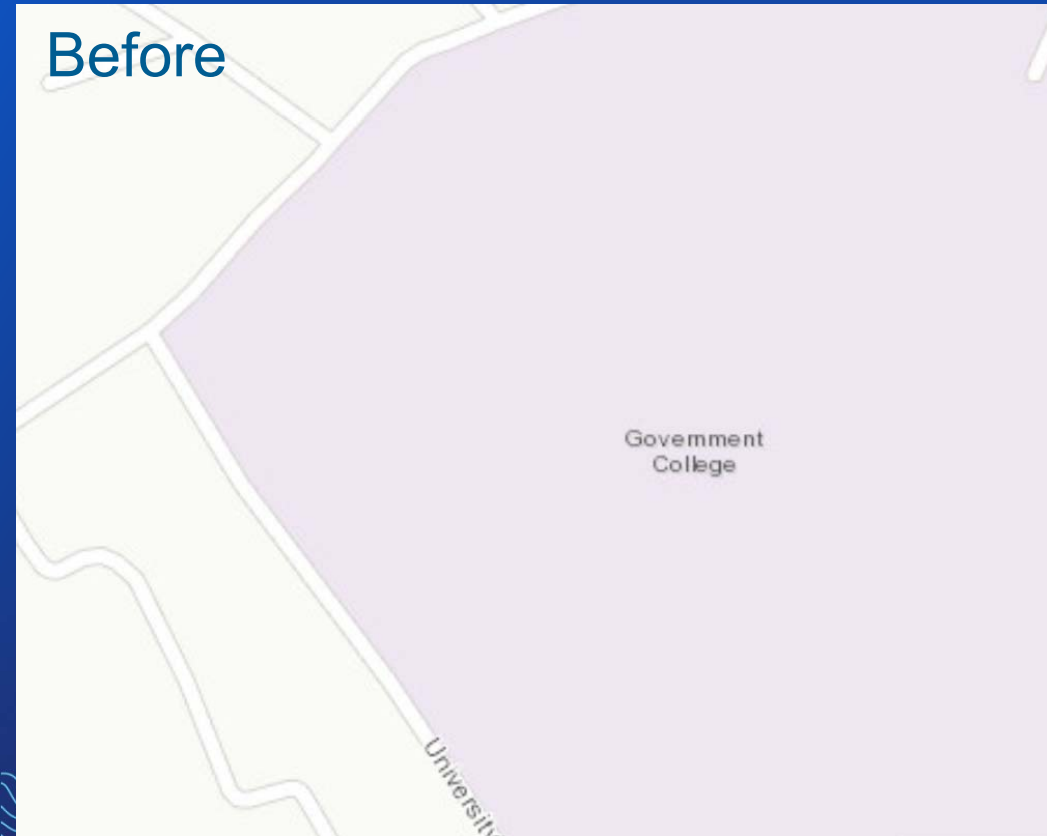


Show us what's missing: Community Maps Editor App

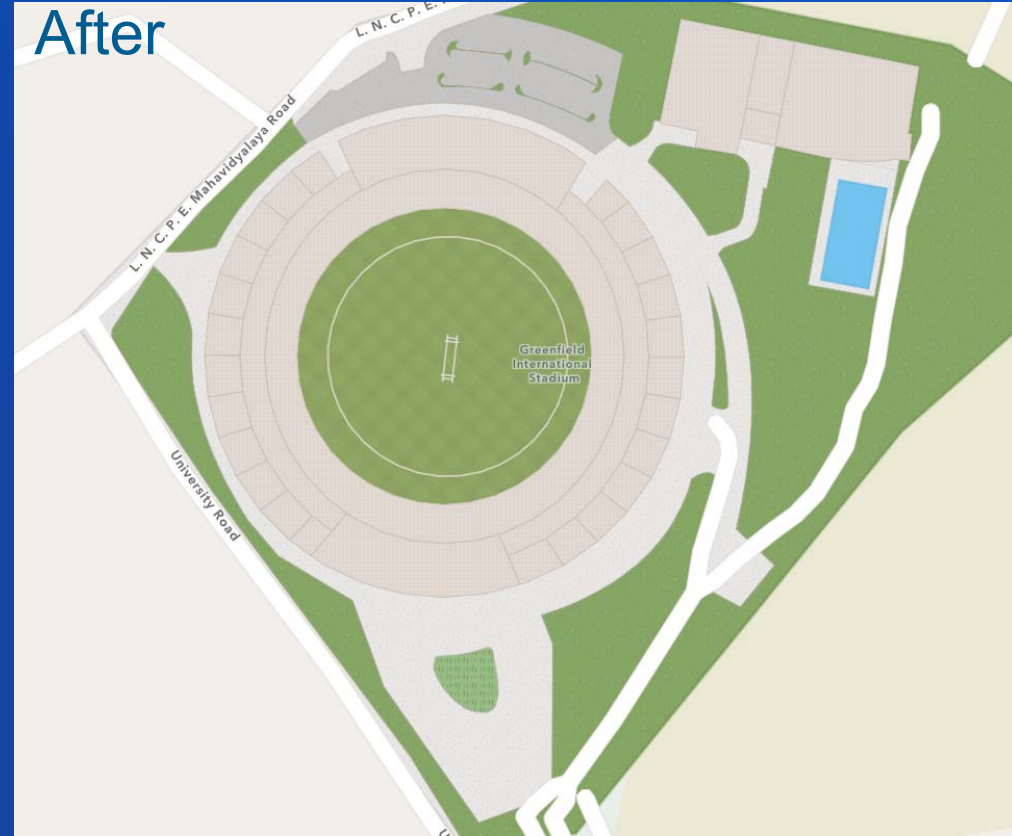


Show us what's missing: Community Maps Editor App

Before

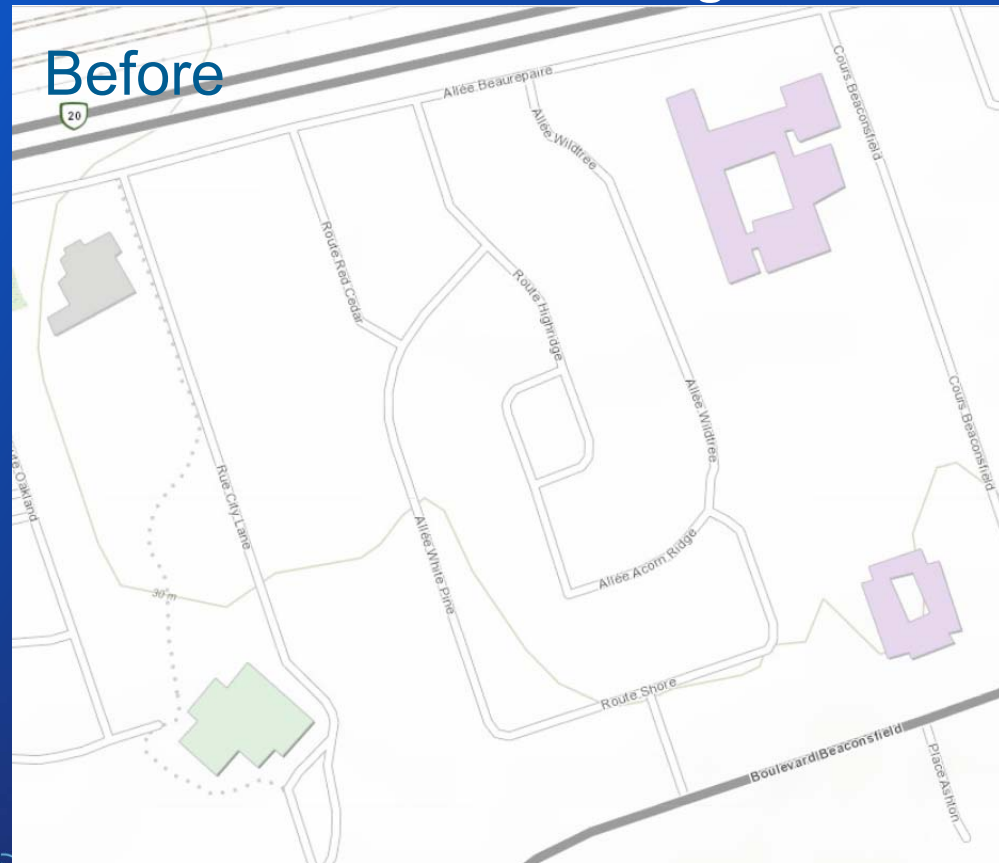


After

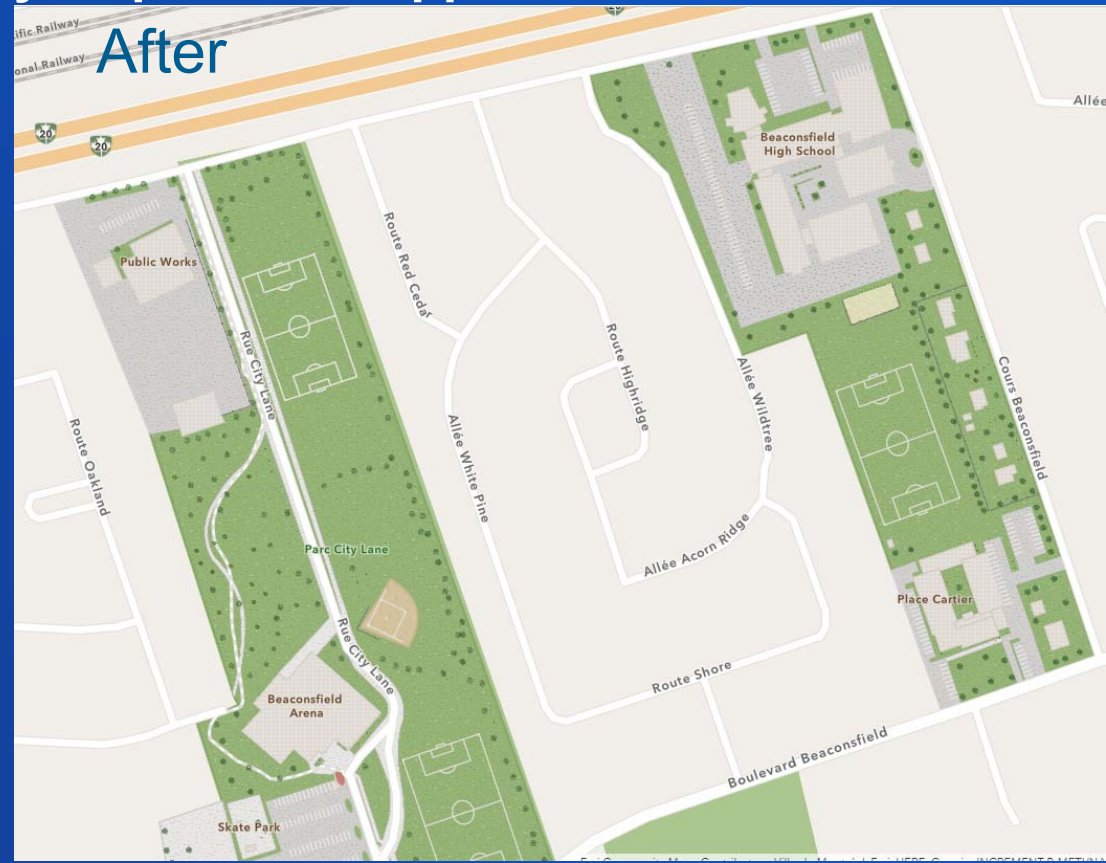


Show us what's missing: Community Maps Editor App

Before



After



Show us what's missing: Community Maps Editor App

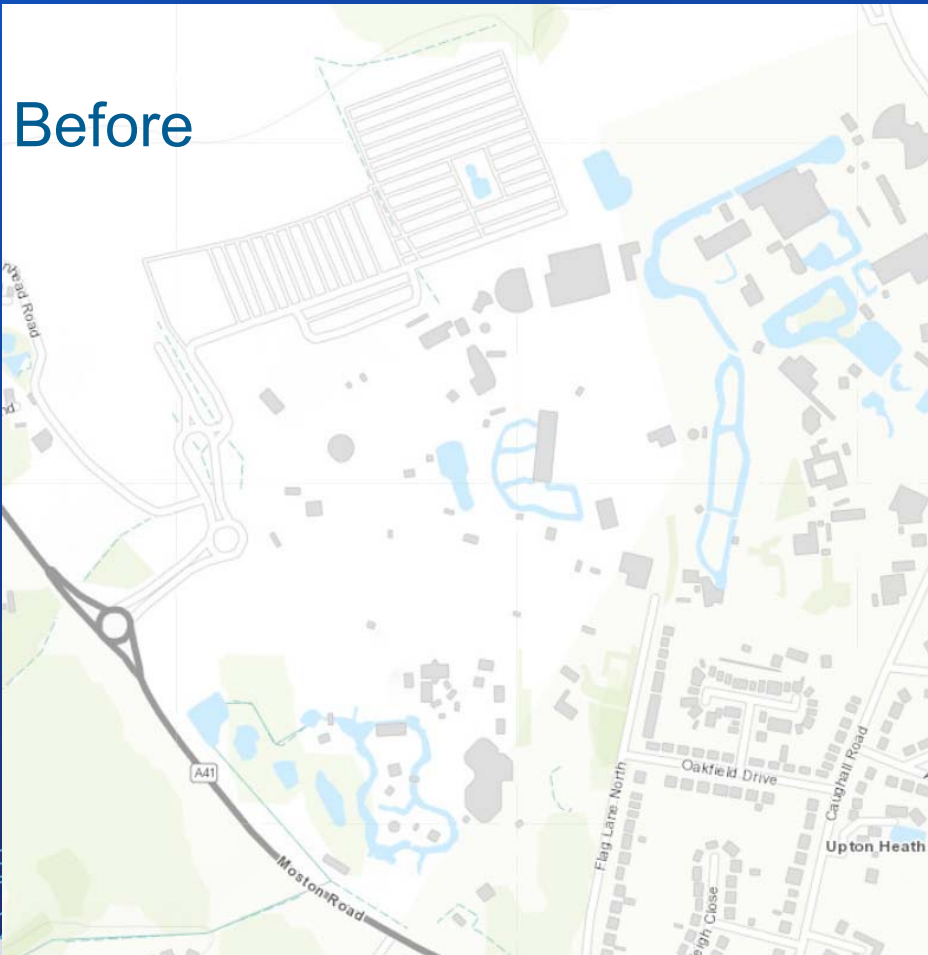
Before



After



Show us what's missing: Community Maps Editor App



Show us what's missing: Community Maps Editor App

Before



After



Audience Participation



- The Editor app can be accessed by anyone and
- Can the Editor app data be downloaded? Y/N

Yes

Home Gallery Map Scene Groups Content Organization

Community Maps Editor

Overview Content Members

Share

Seth Sarakatis sarakatis

The Community Maps Editor is a web app that enables you to edit parts of the Esri Community Maps basemap to add detailed features for universities, schools, parks, landmarks, and other special areas of interest. Join this group to use the app.

owned by esri_ecm

Description

The Community Maps Editor is a web app that enables you to edit parts of the Esri Community Maps basemap to add detailed features for universities, schools, parks, landmarks, campuses, and other special areas of interest. Members of this group are able to access the app and edit features. Click [Join this Group](#) if you would like to access the app and are not yet a group member.

Below are a couple videos to help you get started. Additional help resources are available within the app.

1. [Introducing the Community Maps Editor App \(2:11\)](#)
2. [Overview of the Community Maps Editor App \(2:36\)](#)

The next deadline for submitting edits is **July 14**. See [Community Maps Editor](#) item description (Next Update) for more details.

No sure what to edit, or how? Check out our [Community Maps Challenge](#) below, and [Tutorial](#) to get started!

Recently added content

View All Group Content

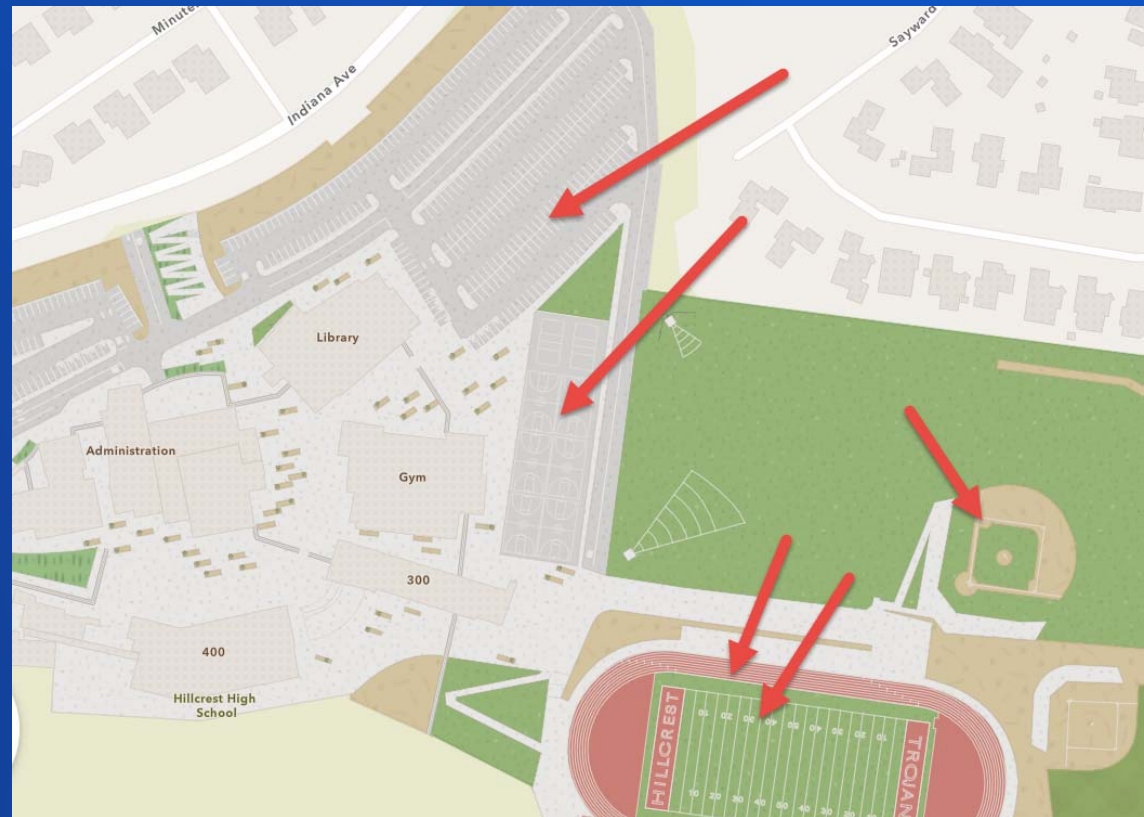
Item Name	Owner	Created	Updated	View Count
Community Maps Challenge	dieneak	Jun 17, 2019	Jun 29, 2019	77
Learn Lesson: Digitize Your N...	dieneak	Jun 20, 2019	Jun 20, 2019	
Community Maps Editor	esri_ecm	Jul 3, 2018	Jul 3, 2019	4,536
Community Maps Editor Sandbox Environment	esri_ecm	Mar 29, 2019	Jun 4, 2019	487
Layer File for Esri Community...	esri_ecm	Feb 9, 2019	Feb 9, 2019	18 Downloads
Esri Community Maps AOs	esri_ecm	Feb 1, 2019	Jul 8, 2019	492
Community Maps Editor AOs	dieneak	Jan 20, 2019	Apr 12, 2019	1,516

View All Group Content

Recent Contributors in **esri_ecm** (past 7 days)

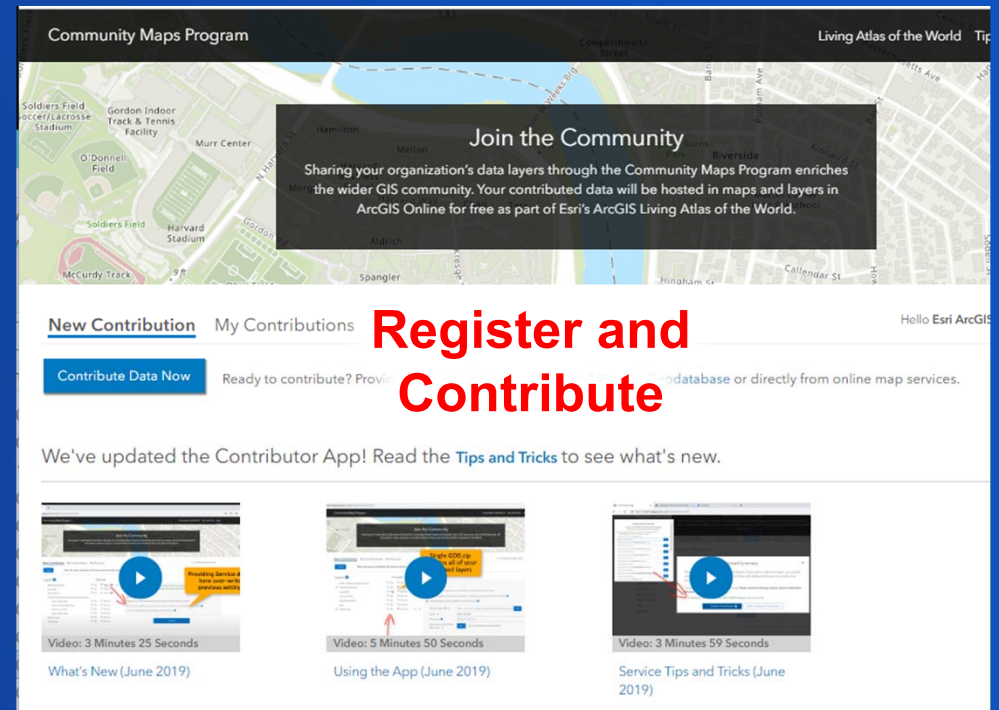
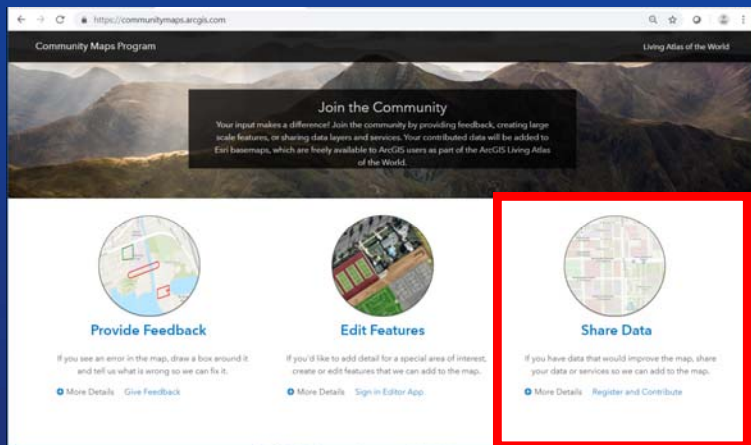
Community Maps Editor App **Best Practices**

- **Best Practices:**
 - Look at what is in the basemap first
 - Use the Clip/Cut to create features
 - Snapping and Right Angles (Space Bar)
 - Straight and Curve Lines (M)
 - Enhance the area with Sports Field and Parking Lot Lines
 - Use Stencils
 - Learn Lesson and Path to practice (www.learn.arcgis.com)



Send us data that's missing: Use the **Contributor App**

- Share your authoritative data that would improve the map
- Requires Registration
- Share as GDB Layers or Services



Contributing Services using the Contributor App

- Service Delivery allows automatic updates!

Join the Community
Sharing your organization's data layers through the Community Maps Program enriches the wider GIS community. Your contributed data will be hosted in maps and layers in ArcGIS Online for free as part of Esri's ArcGIS Living Atlas of the World.

New Contribution My Contributions My Account Admin

Note: ALL layers provided as Zip format must be inside a single GDB.zip

Layers ?

- Admin3 (Municipal Boundary)
- Airport
- Building Footprint
- Cemetery
- Commercial Retail
- Digital Elevation Model (Raster)
- Emergency Law Enforcement
- Golf Courses
- Highway

Format

- Zip
- Service
- Zip
- Service
- Zip
- Service
- Zip
- Service
- Zip
- Service
- Zip
- Service

Building Footprint

Your Service settings are already stored in My Account tab. You do not need to re-enter here unless you want to make a change. You can include these Service layers after clicking 'Upload'!

Service

Supports up to 500k total features per layer. More than 500k features? Click here

Public-facing Feature Service published as a hosted layer by ArcGIS Online (AGOL)

Service Name ✓ Naperville, IL

Layer ✓ Building_Footprints

Frequency Every 6 months

Expression: (Confirm Selection) SQL

Upload

E.g., Contributing Building Footprints as a Service

Set Source, Frequency and Parameters

Building Footprint Parameters

You must select the field for the labels in your local language. Select all, or use query statement to filter your features.

Select all features (this will put all features into 'General' category) (Defaulting to 4,297 of 4,297 total features selected)

Create expression to select Airport Buildings

Create Expression (optional) SQL

Create expression to select Commercial/Retail Buildings

Create Expression (optional) SQL

Create expression to select Community Center Buildings

Create Expression (optional) SQL

Create expression to select Cultural/Heritage Buildings

Create Expression (optional) SQL

Create expression to select Education Buildings

Create Expression (optional) SQL

Create expression to select General/Residential Buildings

Create Expression (optional) SQL

Create expression to select Government/Military Buildings Buildings

Create Expression (optional) SQL

Create expression to select Hotel Buildings

Create Expression (optional) SQL

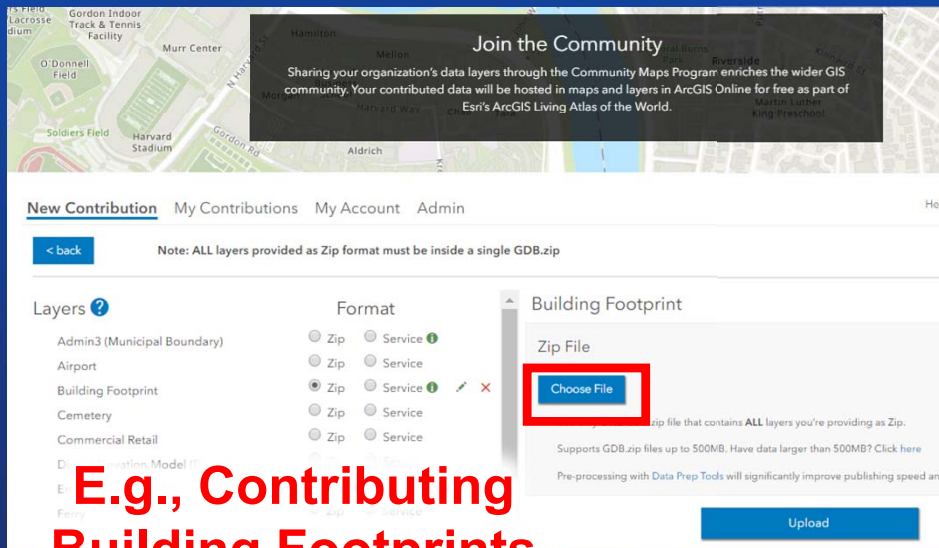
Create expression to select Industrial Buildings

Create Expression (optional) SQL

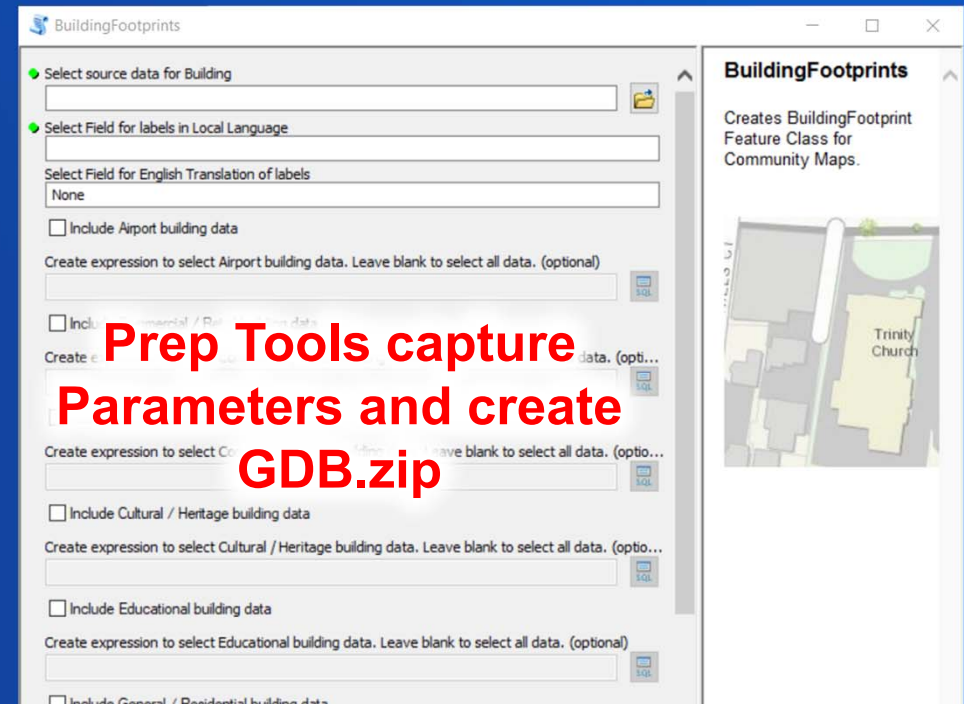
Set Source, Frequency and Parameters

Contributing GDB Layers using the Contributor App

- Data Prep Tools speed up the process and reduce errors!



E.g., Contributing Building Footprints as a GDB.Zip



Prep Tools capture Parameters and create GDB.zip

Audience Participation

- How often do people typically Contribute data? **Average once per year**
- What are the Data Prep Tools for?
 - What are the prep tools?
 - Pre-processes your GDB layers for faster integration and fewer errors
- How can I easily re-send (schedule) data updates?
 - With a Service Subscription! (and no Prep Tools with Service Delivery)
- I'm a Contributor; when would I use the Feedback App?
 - If you have a few minor changes, make local database edits then provide through Feedback (And be sure to Identify yourself as a Contributor)!
- I'm a Contributor; when would I use the Editor App?
 - If you're missing detail, and you don't already have a layer (Or update your local database and provide the new features using Contributor App)

Contributor App **Best Practices**

- **DO's**

- **Contribute as Services for features that change more often**
 - E.g., Building Footprints, parcels, roads
- **Run the Data Prep Tools if you are providing as GDB.zip!**
- **Carefully manage your Subscriptions (speeds up your contribution)**

- **DON'Ts**

- **Contribute data that has no changes (slows down your Contribution)**



Audience Participation: Bonus Round

- What's the difference between Vector and Raster basemaps?
 - ✓ Vector: delivered as vector tiles (PBF format) that are rendered client-side
 - ✓ Uses a style file
 - ✓ Access through [Vector Basemaps group](#)
 - ✓ Vector Basemaps are updated first and more often!
- What is the Style Editor?
 - ✓ Way to customize the Esri vector basemaps
 - ✓ Edit the style for one of the existing tile layers (e.g. Light Gray Canvas) and then publish the updated style as a new tile layer.
 - ✓ Google: “How to Customize Esri Vector Basemaps”

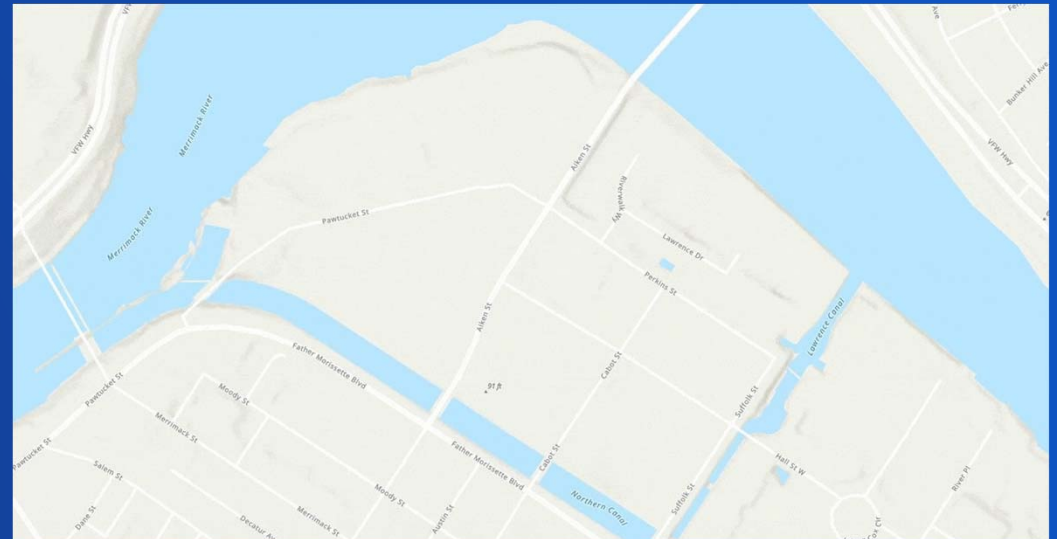


Key takeaways: Recap


1. Use the Community Maps Program to **improve the Basemap**

2. Participate in three ways:


- **Tell us** what's missing (Feedback)
- **Show us** what's missing (Edit)
- **Send us** what's missing (Share)



3. Remember <https://CommunityMaps.arcgis.com>



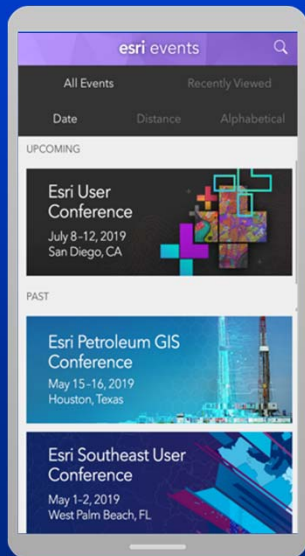
Questions?
communitymaps@esri.com



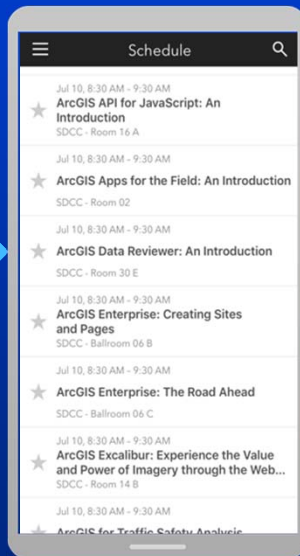
Seth Sarakaitis and Mike Ridland
Community Maps Team

Please Share Your Feedback in the App

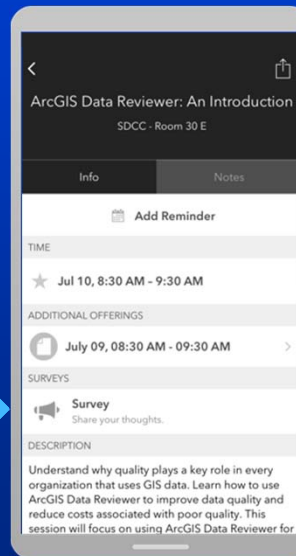
Download the Esri Events app and find your event



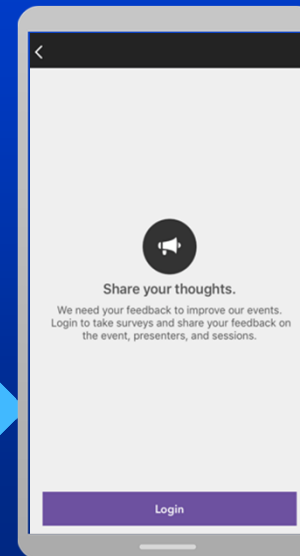
Select the session you attended



Scroll down to "Survey"



Log in to access the survey



Complete the survey and select "Submit"

