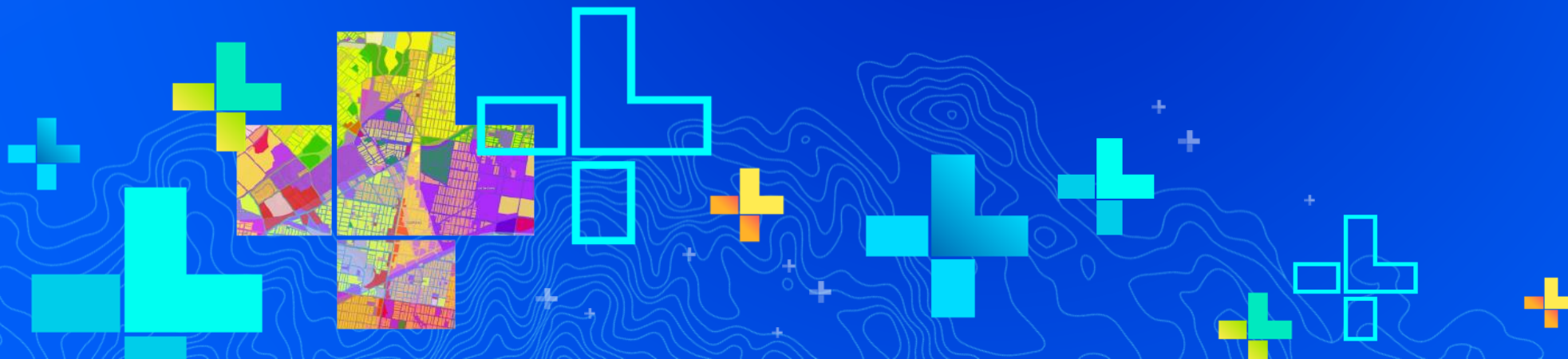




ArcGIS Online: What's new in Hosted Feature Layers

Jeremy Bartley, Paul Barker, Chris Whitmore



Agenda

- Hosted Feature Layers
 - Overview
 - Performance & Improvements
 - Hosted Feature Layer Views
 - Data Management
 - What's Next?

Overview – Hosted Feature Layers



- Your data layer
- One of many layer types supported in ArcGIS
- Bread and butter and the starting point of a WebGIS
- Flexible, fast and support editing
- Can be used offline and changes are synchronized
- Many publishing options
 - CSV, XLSX, XLS, GeoJSON, FGDB, SHP, Feature Collections, ArcGIS Pro/Desktop
- Ubiquitous support across the ArcGIS platform
- Multiple ways to download
 - CSV, SHP, GDB, GeoJSON, KML, XLSX, Feature Collection
- Millions Hosted Feature Services in ArcGIS Online (thousands daily)

Performance & Improvements

Jeremy Bartley



Performance and Improvements



WebGL Rendering: Fast rendering for a modern web & more features

10110
01001
10011

Protocol Buffer Format (PBF) : Smaller payloads faster reading

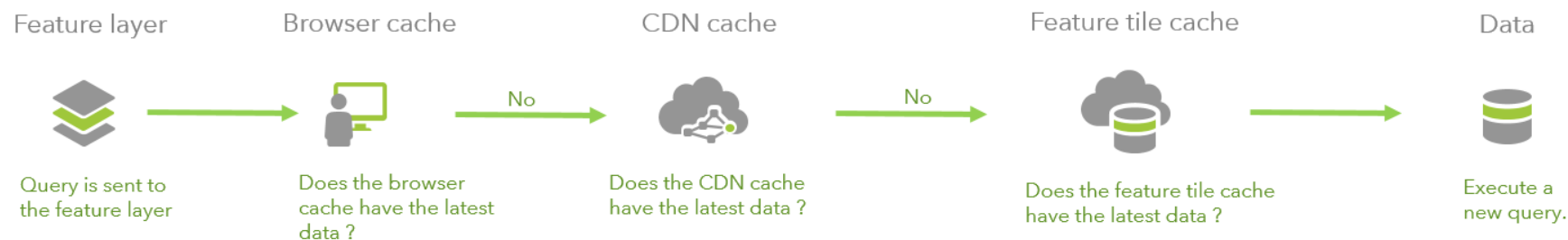


Response caching: Faster queries for everyone

Multi-part support for Publishing

Response Caching

Public Layer

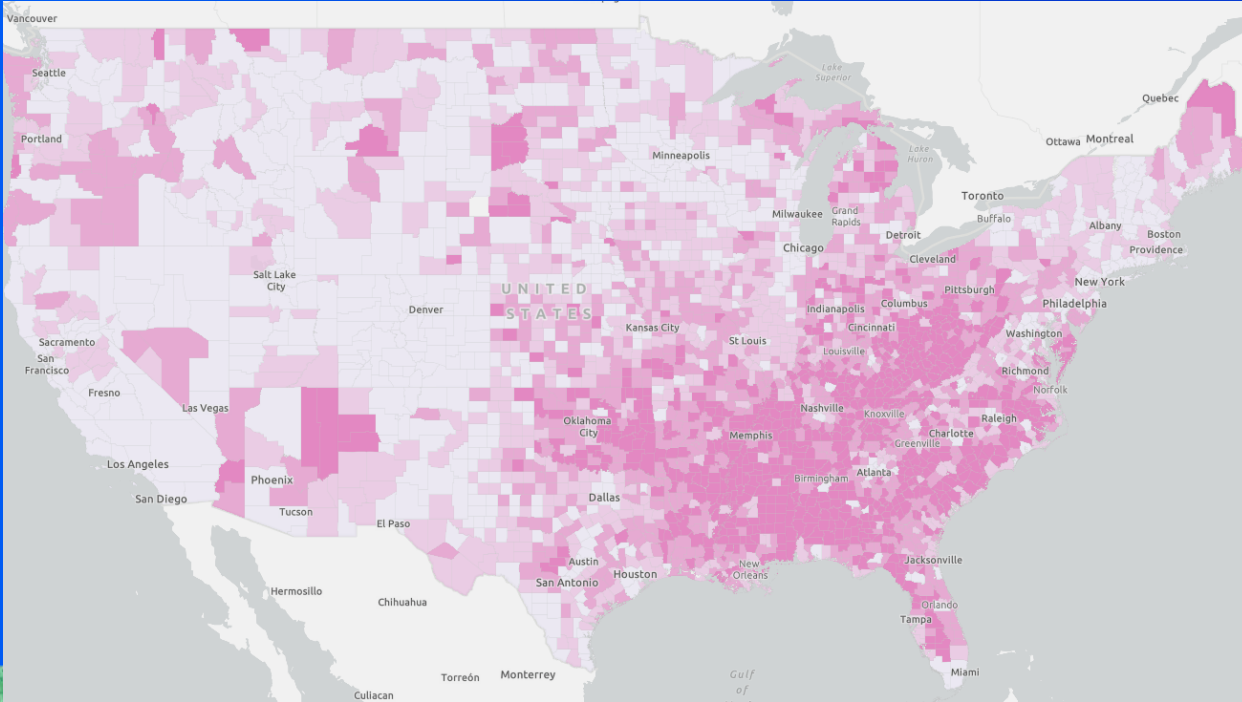


Private Layer



Performance & Improvements Demo

Jeremy Bartley

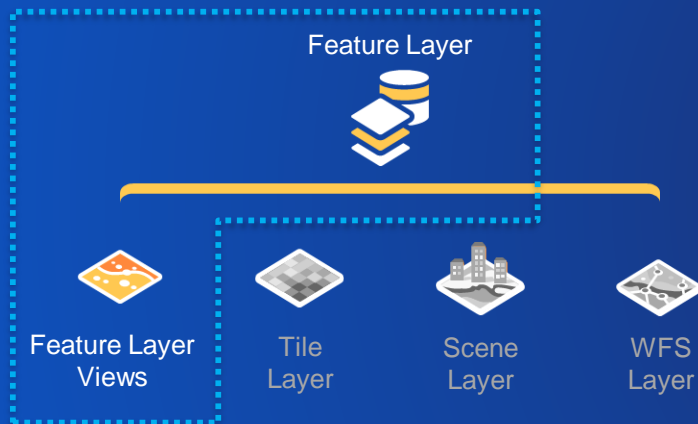


Hosted Feature Layer Views

Paul Barker



Hosted Feature Layer Views



- Create new views of your data , without duplicating information
- Tailor capabilities for your audience
- Remove sensitive information
- Restrict information geographically
- Control access and editing
- Same capabilities as a feature layer
- Publish additional tile layers
- Join data together dynamically

Hosted Feature Layer Views Demo

Paul Barker



Data Management

Chris Whitmore, Paul Barker

Data Management



- Publish photos
- Calculate with Arcade
- Improved experience for working with fields
 - Field metadata (value type and description)
- Create and modify domains
- Append and update data

+ Add

Search Fields

Type

Number

String

Date

ID

Attachment

Related Table

42 of 42

<input type="checkbox"/>	Display Name	Field Name
<input type="checkbox"/>	OBJECTID	OBJECTID
<input type="checkbox"/>	OGF_ID	OGF_ID
<input type="checkbox"/>	BH_ID	BH_ID
<input type="checkbox"/>	BH_TYPE	BH_TYPE
<input type="checkbox"/>	BH_USE	BH_USE
<input type="checkbox"/>	BH_STATUS	BH_STATUS
<input type="checkbox"/>	DRILL_METH	DRILL_METH
<input type="checkbox"/>	INCLIN_FLG	INCLIN_FLG

Manage Data Demo

Chris Whitmore, Paul Barker

Metadata

Chris Whitmore



What's Next?



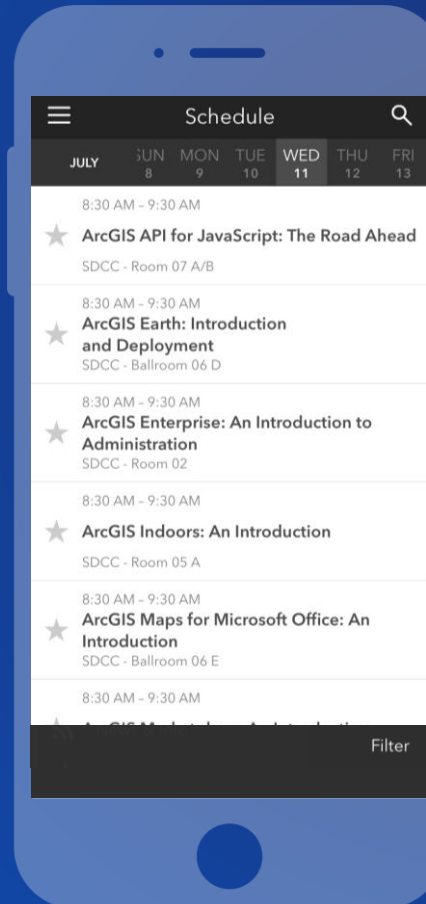
- Revised update data experience
- Delete features in batch
- More options when creating views
- Making editing smarter (forms)
- Continuing to improving field metadata

Please Take Our Survey on the App

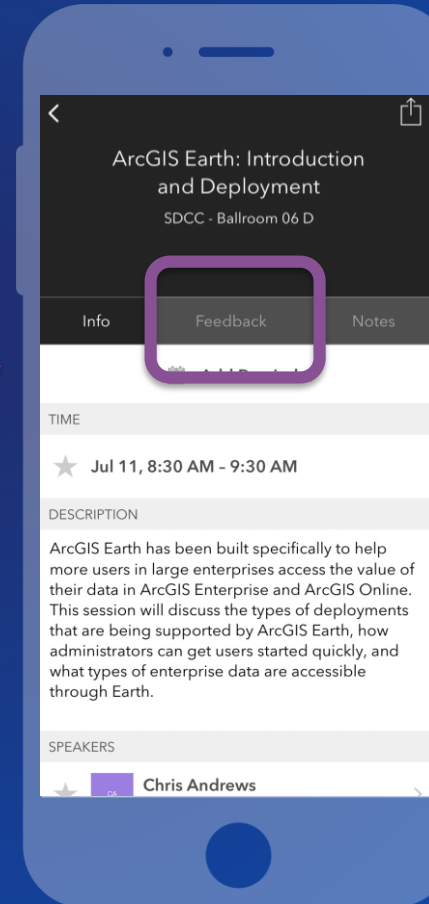
Download the Esri Events app and find your event



Select the session you attended



Scroll down to find the feedback section



Complete answers and select "Submit"

