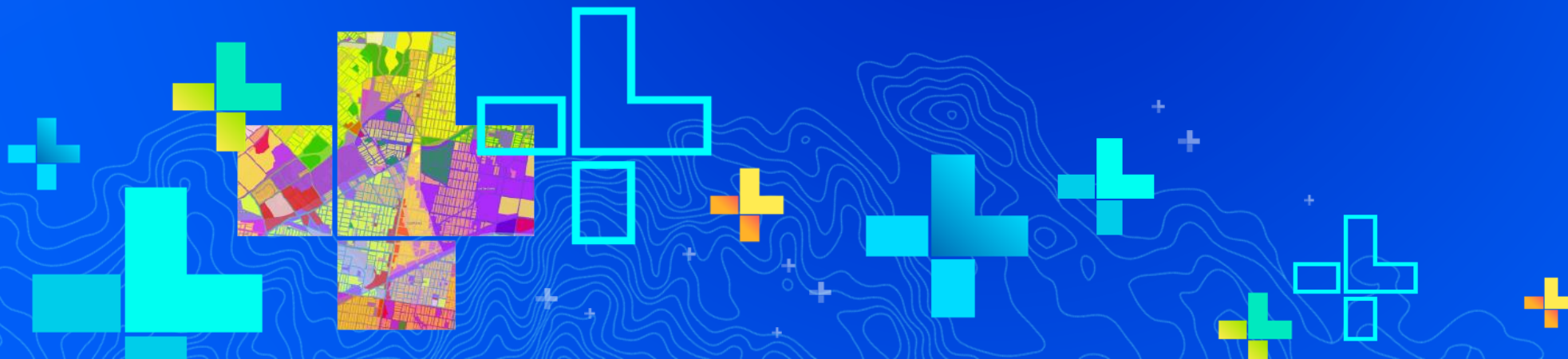




# Web AppBuilder: Using Editing Capabilities

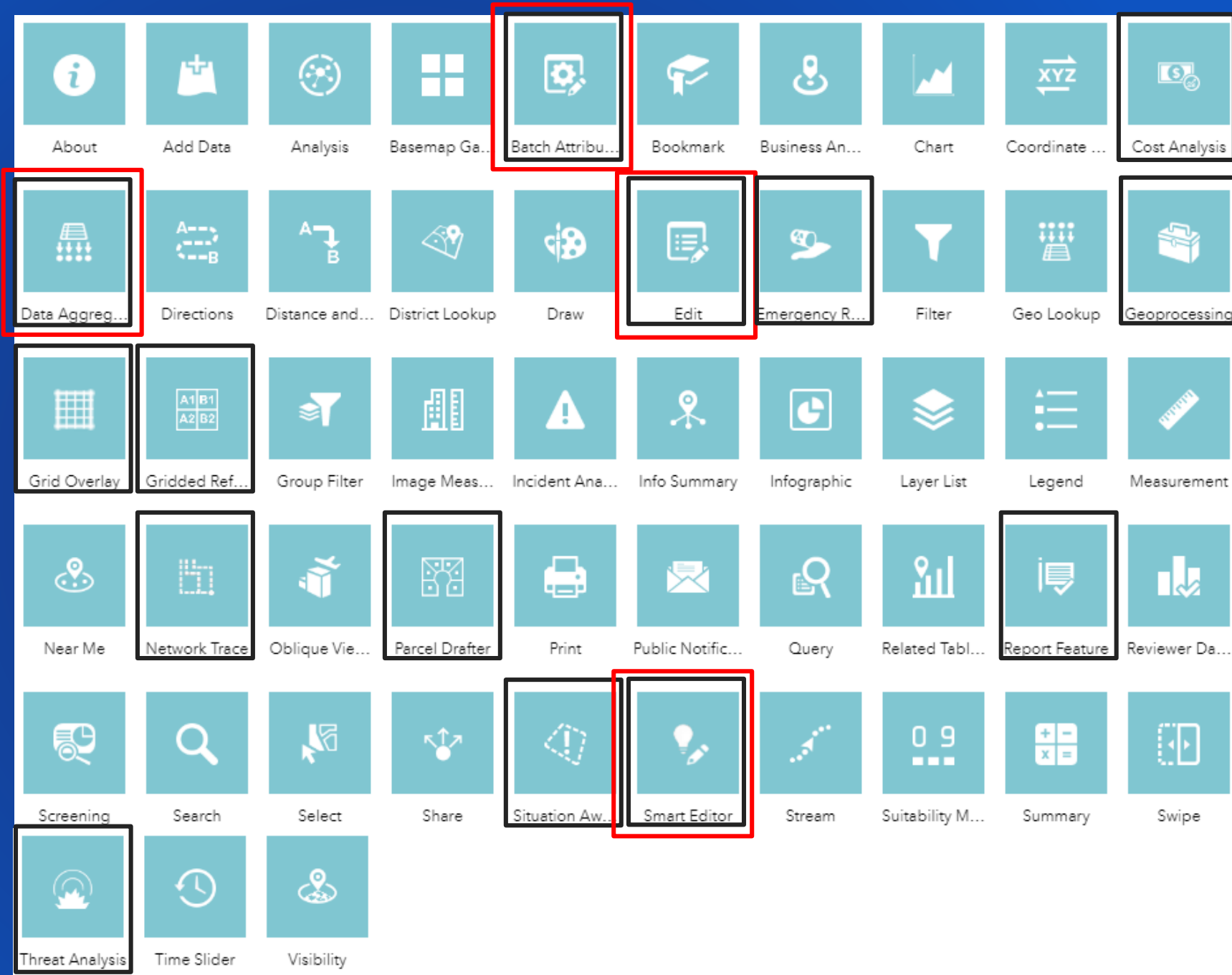
Jianxia Song, Previn Wong, & Chris Buscaglia

SEE  
WHAT  
OTHERS  
CAN'T



# Widgets

- Over 50 widgets
- Creates/modified data
- General purpose



# Common workflows



Batch Attribu...

- I want to change the STATUS on a group of features.



Smart Editor

- I want a form that show fields based on what I've entered.



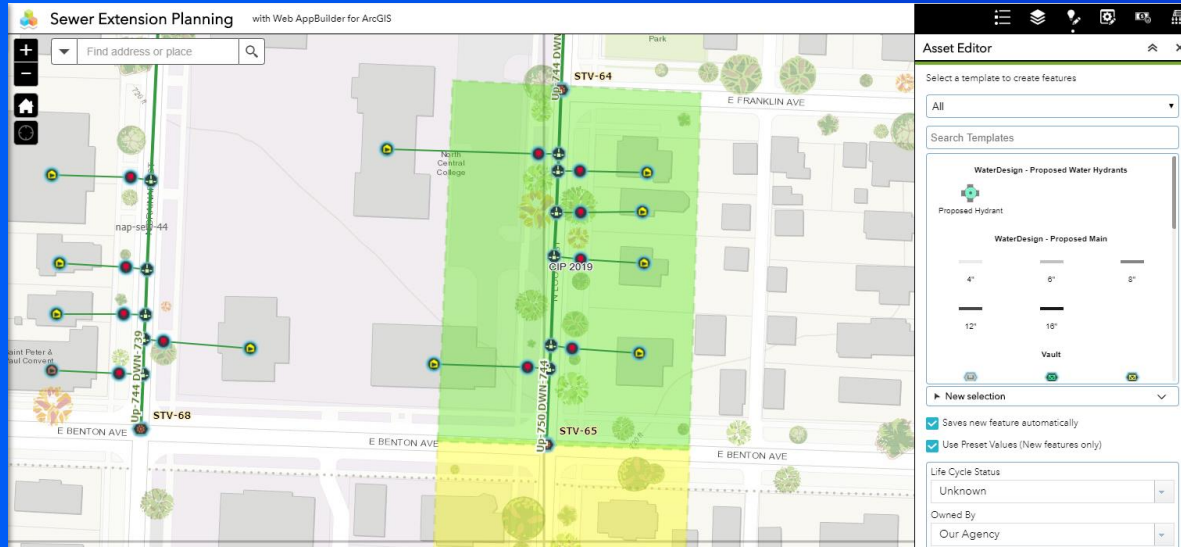
Edit

- I need to split, cut, merge existing features.



Data Aggreg...

- I need to load and save a spreadsheet onto the map.



# Editing a Sewer Capital Improvement Project Demo

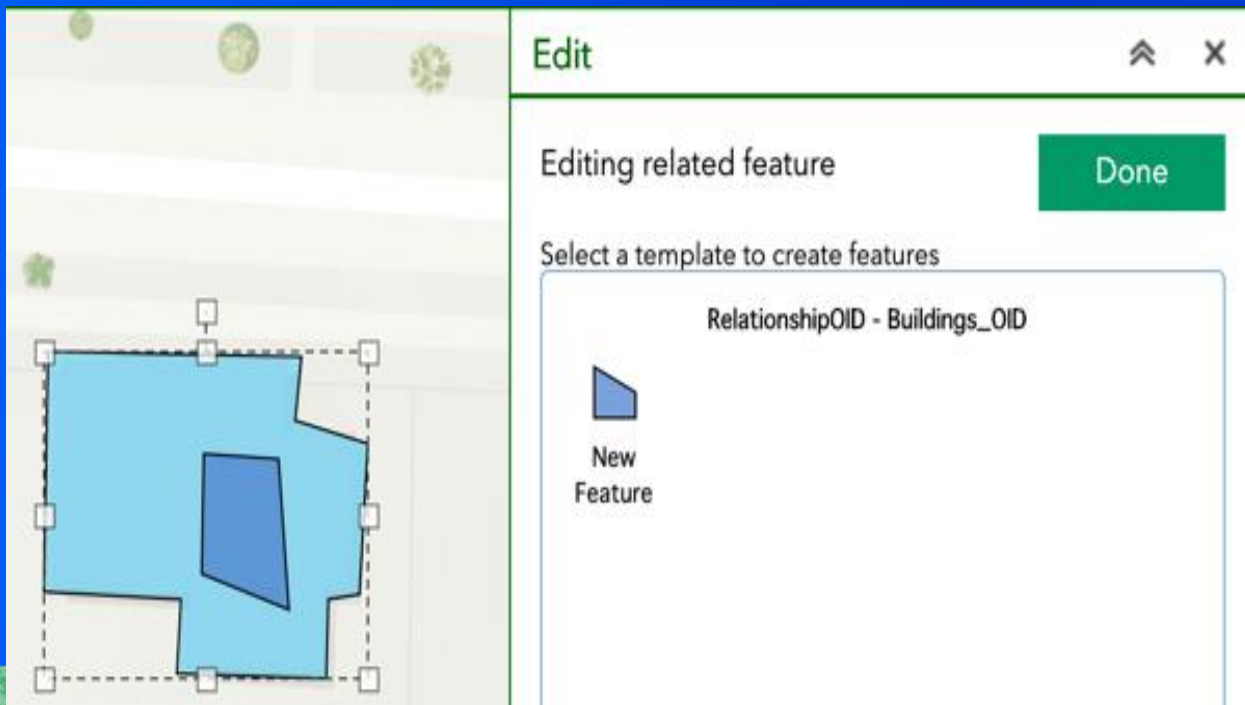
Previn Wong



## Demo Recap

- Used Batch Attribute Editor to update the status of all 2019 assets to Active.
- Smart Editor was used to perform a context sensitive inspection.
- Smart Editor used to expand our sewer collection into 2020 CIP.
- Data Aggregation used to quickly map the service connections.
- Cost Analysis performed to get a estimated cost of the CIP.





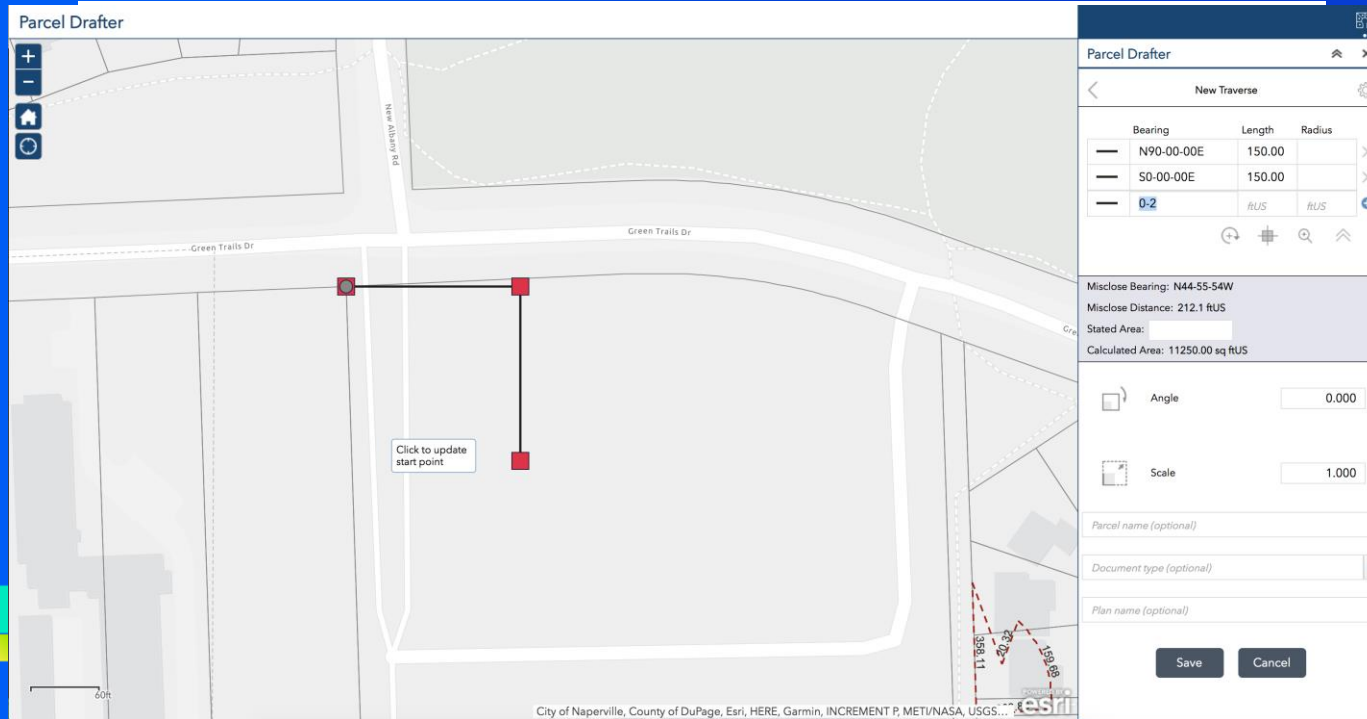
# Edit Widget Demo

Jianxia Song

# Demo Recap

- Edit Feature with Merge, Reshape, and Cut tools
- Edit related records
- Edit related features





# Parcel Drafter Demo

Chris Buscaglia



# Demo Recap



Questions?

