



Using StreetMap Premium

Patrick M. Peters, SMP product engineer



SEE
WHAT
OTHERS
CAN'T

What is StreetMap Premium for ArcGIS?

- Ready-to-use data products for the ArcGIS platform
- On-premise/offline use
- Support for mapping, geocoding, and routing functionality
- Licensed annually (by geography, function, app), cost
- Available for 5 regions, global coverage, content updated regularly



SEE WHAT OTHERS CAN'T

What is StreetMap Premium for ArcGIS?

- **SMP Standard**
 - Licensed file geodatabase (FGDB) with Network + Locators (Classic and New)
 - Use in ArcGIS Desktop + Enterprise
 - **SMP Mobile Map Packages (MMPKs)**
 - Extension licensing, Map + Network + Locators (Classic)
 - Use in ArcGIS Desktop (Pro) + Mobile
 - **SMP New Locator Quarterly Updates**
-
- **SMP Custom Roads**
 - File geodatabase (FGDB) with editable Network + Locators (Classic)
 - Use in ArcGIS Desktop (Pro) + Enterprise + Mobile



SEE WHAT OTHERS CAN'T

What is StreetMap Premium for ArcGIS?

Typical Update Cycle

Region	File Geodatabase and Classic Locators	Mobile Map Packages and New Locators	Quarterly Locator Updates
North America	4x	4x	4x
Europe	2x	2x	4x
South America	1x	1x	4x
Asia Pacific	1x	1x	4x
Middle East and Africa	1x	1x	4x
Japan	1x	Not Available	Not Available

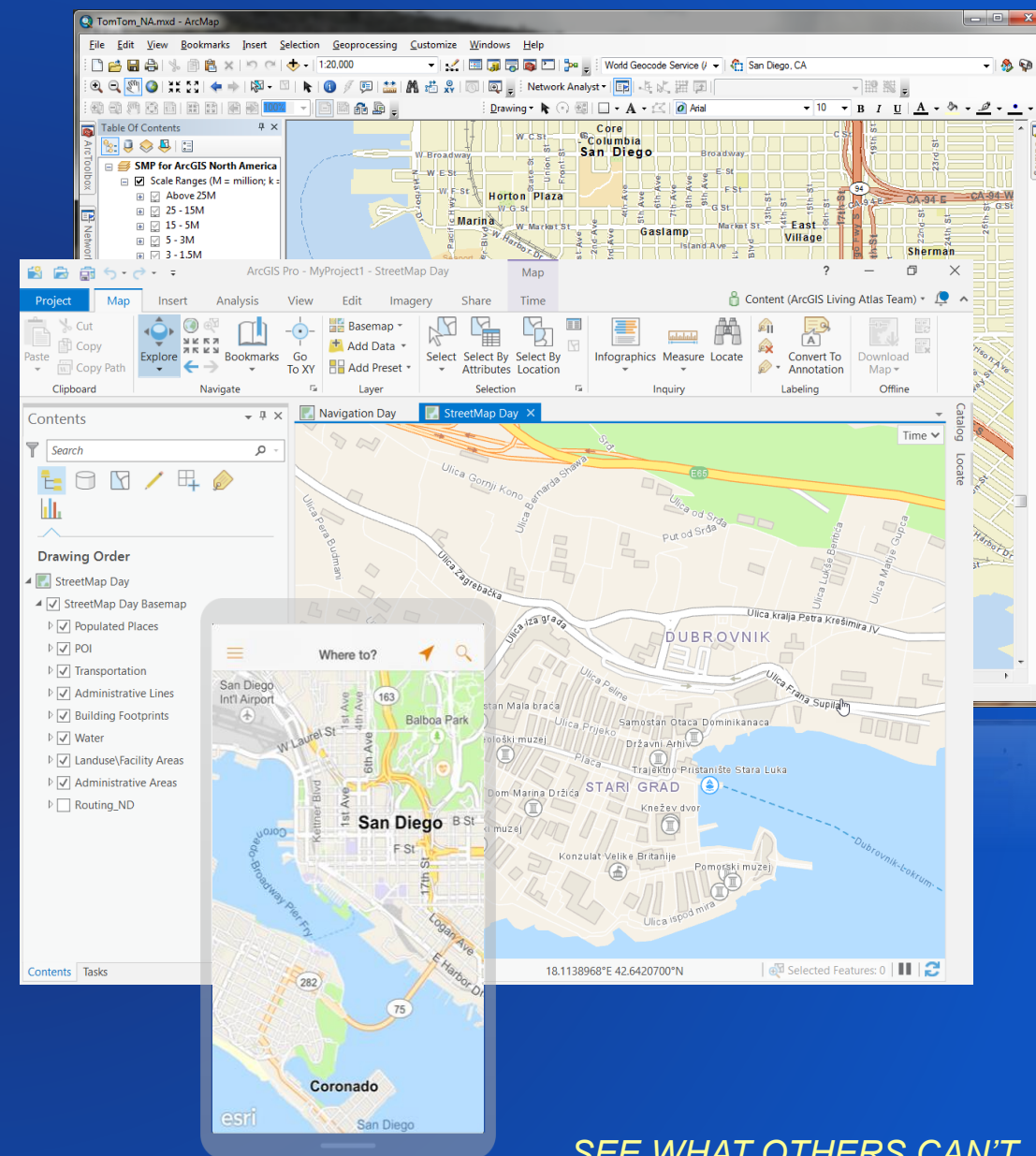


SEE WHAT OTHERS CAN'T

Map Display



- Ready-to-use basemap
- High-quality cartography and detail
- Multi-scale representation
- Optimized for drawing speed (MMPK)

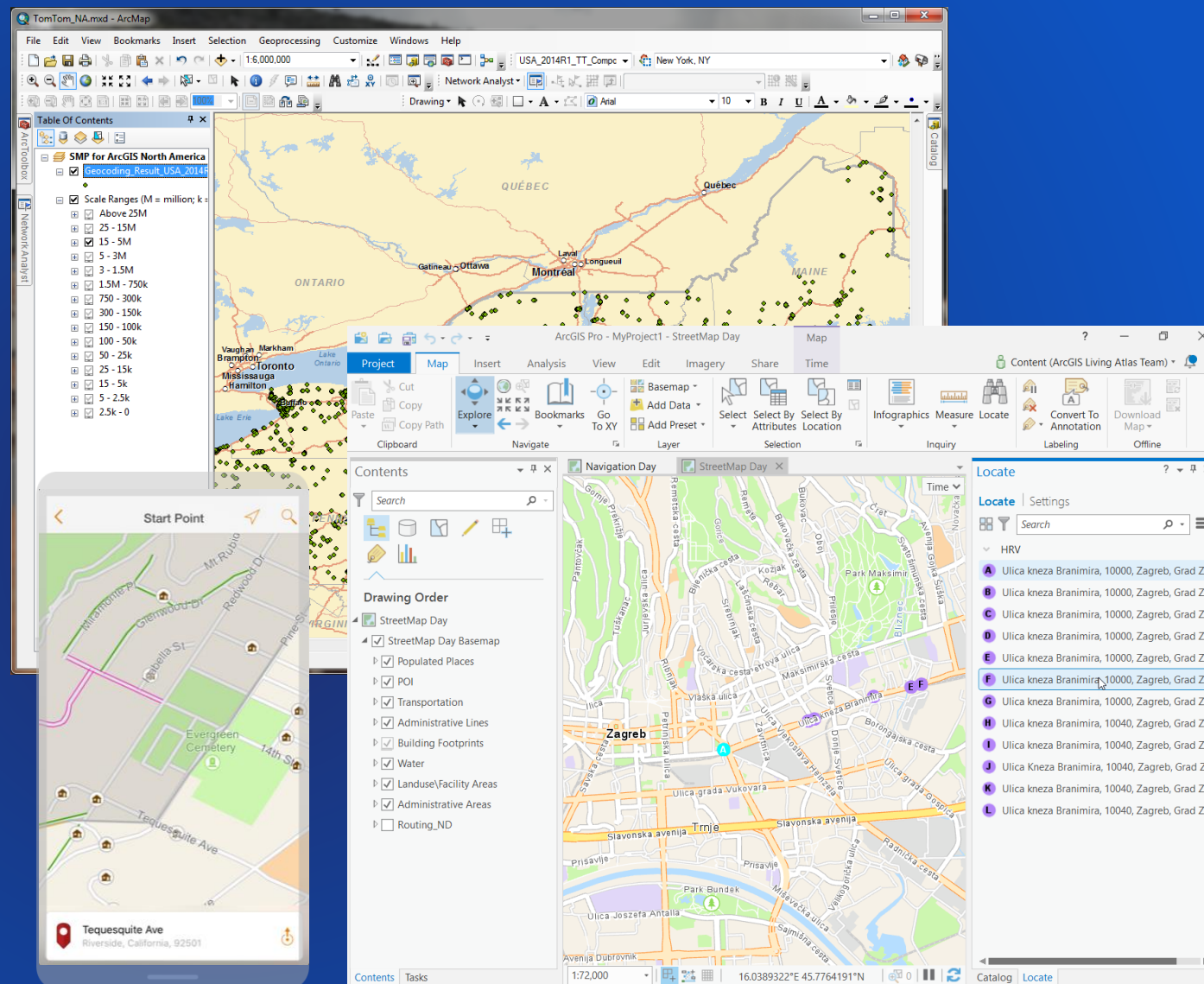


SEE WHAT OTHERS CAN'T

Geocoding



- Ready-to-use locators
- Geosearch with Suggestions
- Batch (table input)
- Reverse (X,Y input)
- New Locators

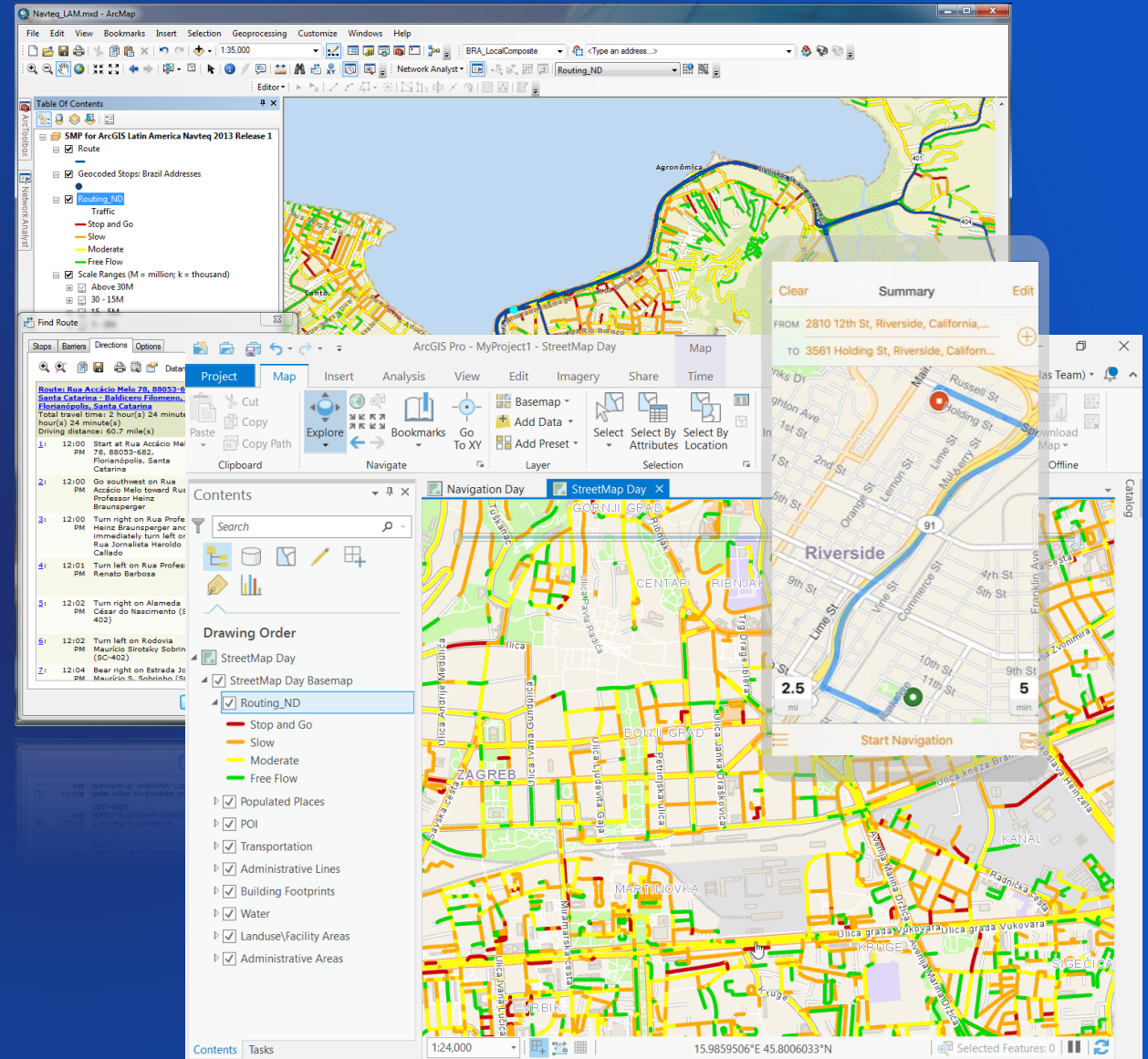


SEE WHAT OTHERS CAN'T

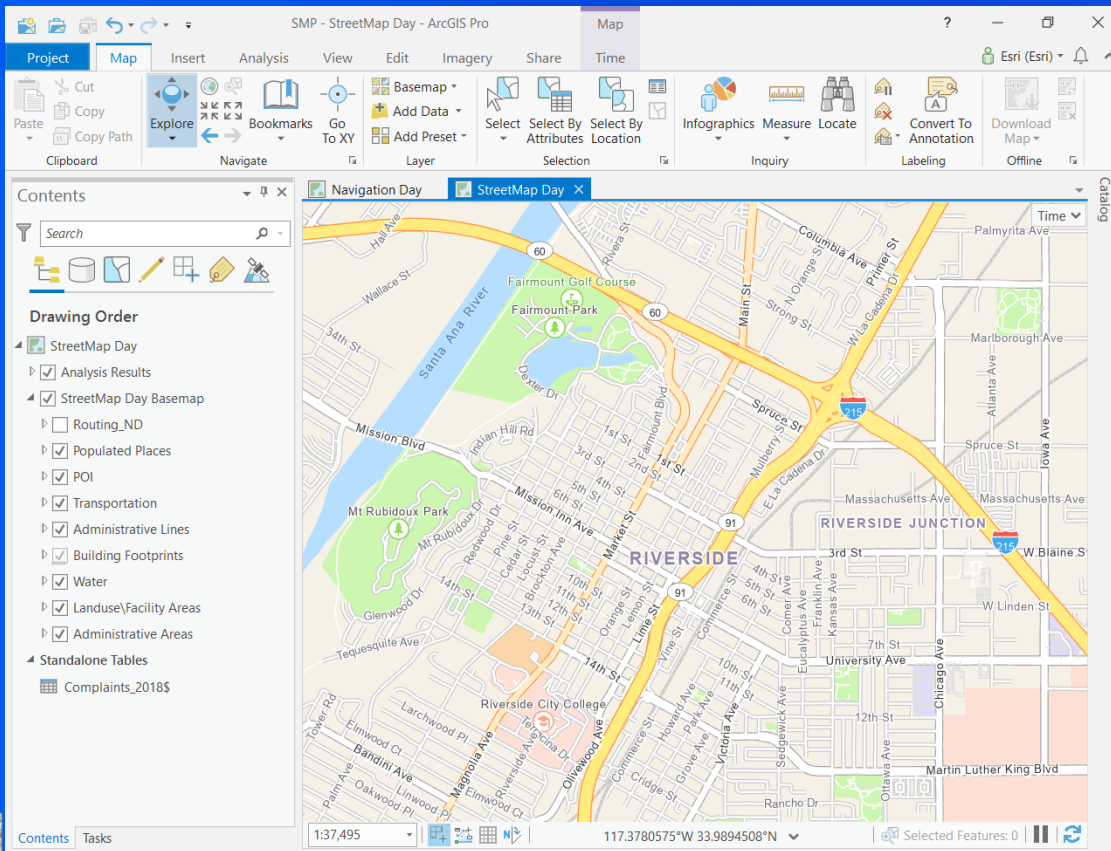
Routing



- Ready-to-use network dataset
- With Network Analyst extension
 - Six (6) route solvers
- Historical traffic information
 - Avg. observed speeds last 2 years
- Restrictions/Advanced Logistics
- Travel Modes



SEE WHAT OTHERS CAN'T



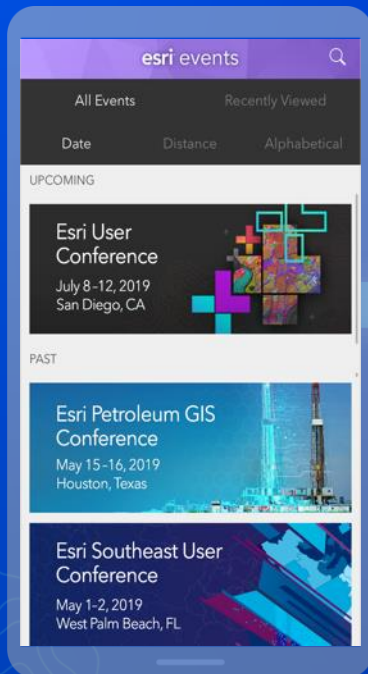
Using StreetMap Premium - MMPKs

Patrick M. Peters

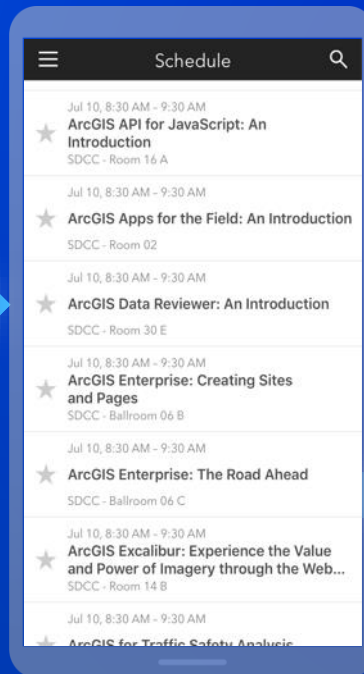


Please Share Your Feedback in the App

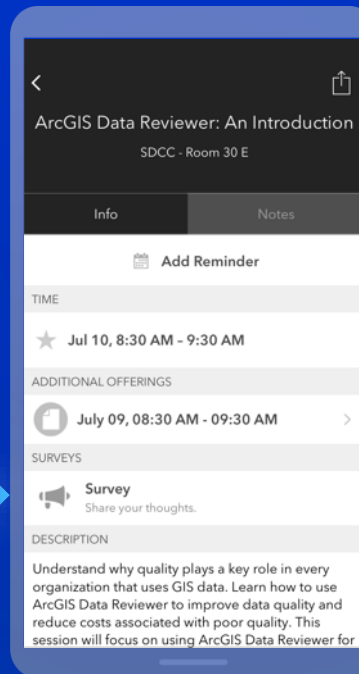
Download the Esri Events app and find your event



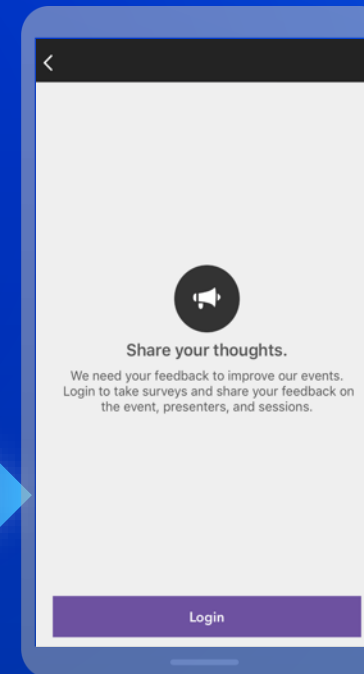
Select the session you attended



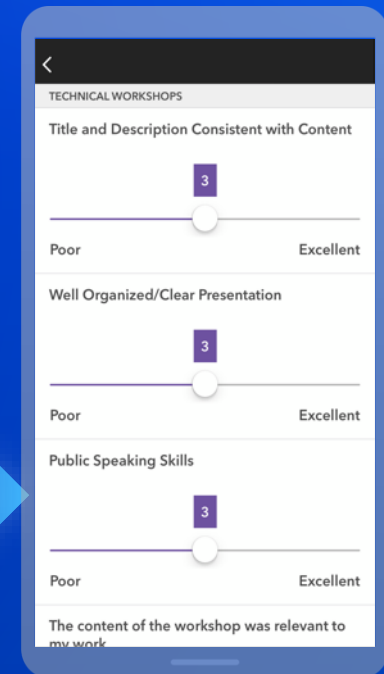
Scroll down to "Survey"



Log in to access the survey



Complete the survey and select "Submit"





Thank you for attending!

Patrick M. Peters, SMP product engineer



SEE
WHAT
OTHERS
CAN'T