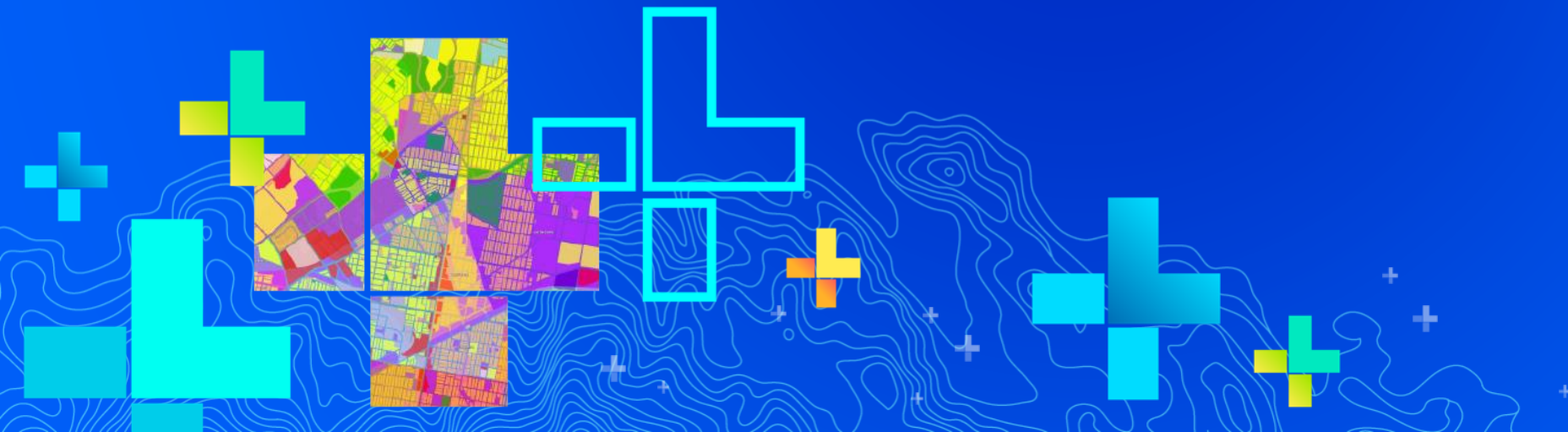


# Preparing to Implement Portal for ArcGIS

Meg Hartel & Julia Guard



# About Us

- **Platform Engineers within Esri Professional Services (Redlands)**
- **Specialize in:**
  - **ArcGIS Enterprise Deployments**
  - **Configuration**
  - **Security**
  - **Best Practices**
  - **Web GIS**

# The Importance of Planning

- What makes a good plan:

- Architecture diagram
- Necessary hardware
- Review of system requirements
- Know your system goals
- Software configurations
  - Access
  - Security
  - SSL/TLS

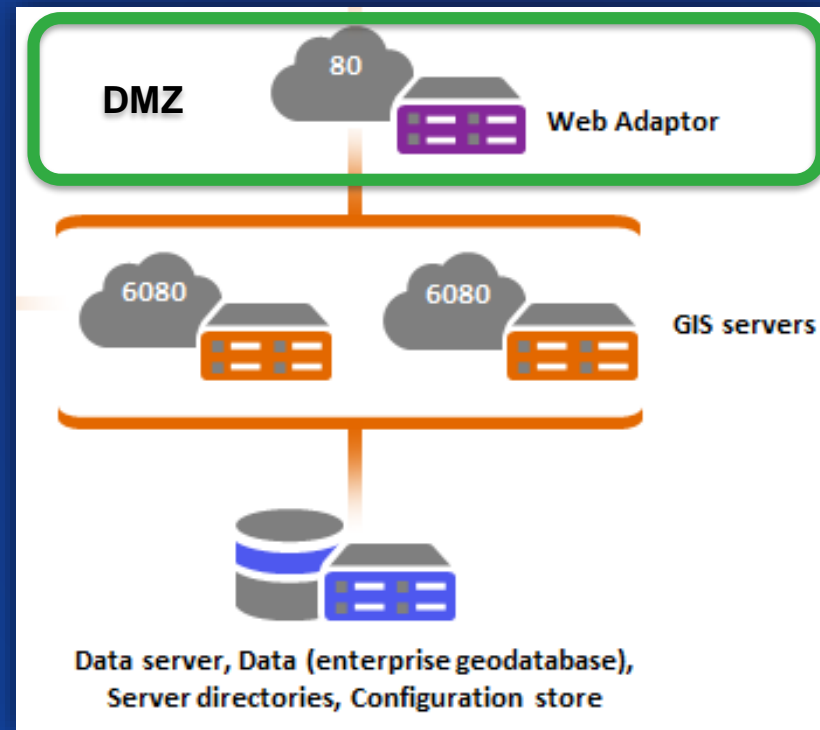


# Access

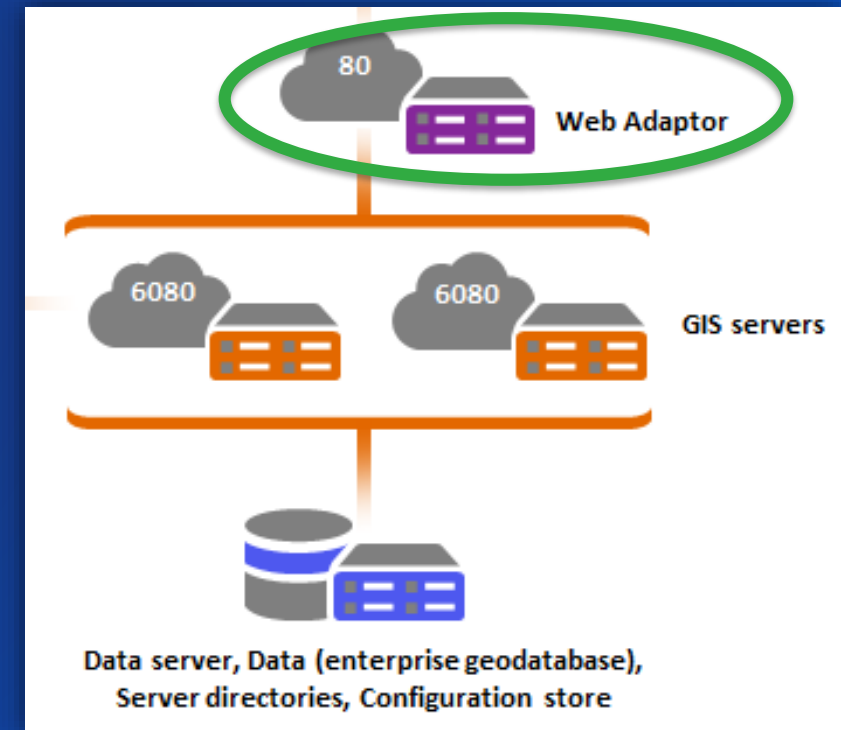


# Access

- Internal versus External
- Considerations:
  - Sensitivity of the data
  - Need for public sharing
  - Mobile usage
  - Security



External



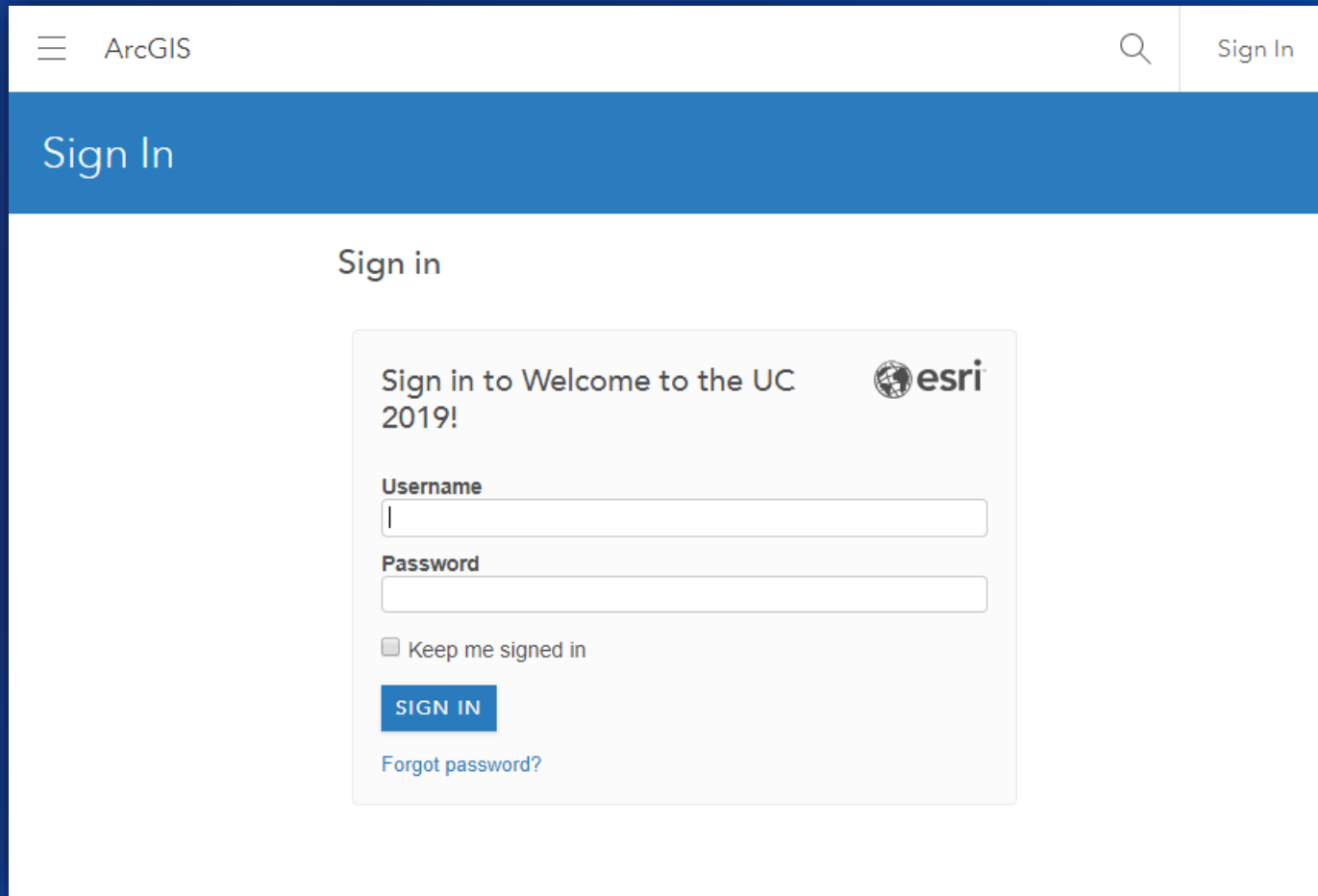
Internal

# Security



# Security


- **Built-in logins**
  - Included with Portal
  - User managed
  - Good for getting started



The screenshot shows the ArcGIS Sign In interface. At the top, there is a navigation bar with the ArcGIS logo on the left, a search icon in the center, and a 'Sign In' link on the right. Below this is a blue header bar with the text 'Sign In'. The main content area is white and features a 'Sign in' heading. Below the heading is a sign-in form with the text 'Sign in to Welcome to the UC 2019!' and the Esri logo. The form includes fields for 'Username' and 'Password', a checkbox for 'Keep me signed in', a blue 'SIGN IN' button, and a link for 'Forgot password?'.

Sign In

Sign in

Sign in to Welcome to the UC 2019! 

Username

Password

☐ Keep me signed in

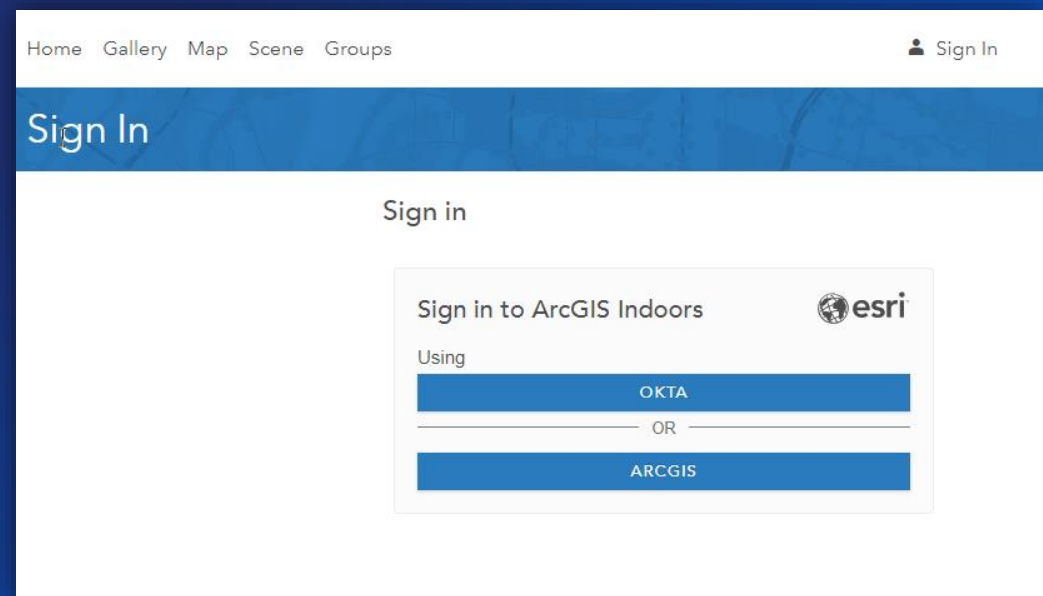
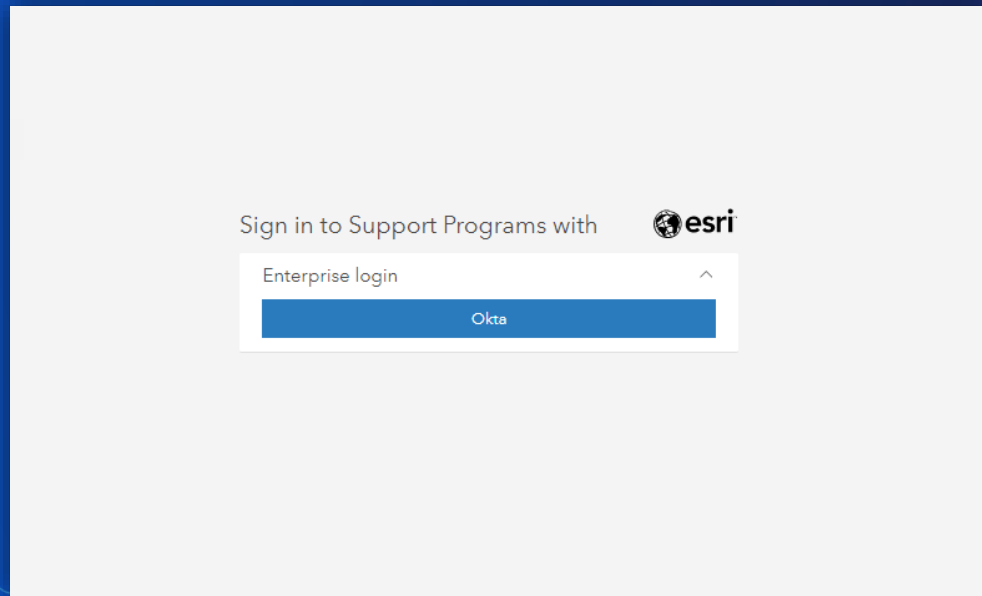
**SIGN IN**

[Forgot password?](#)



# Security

- **SAML based Enterprise Logins (Security Assertion Markup Language)**
  - Requires integration with an IdP, for example ADFS
  - IT Managed
  - Good for supporting a combination of internal and external logins

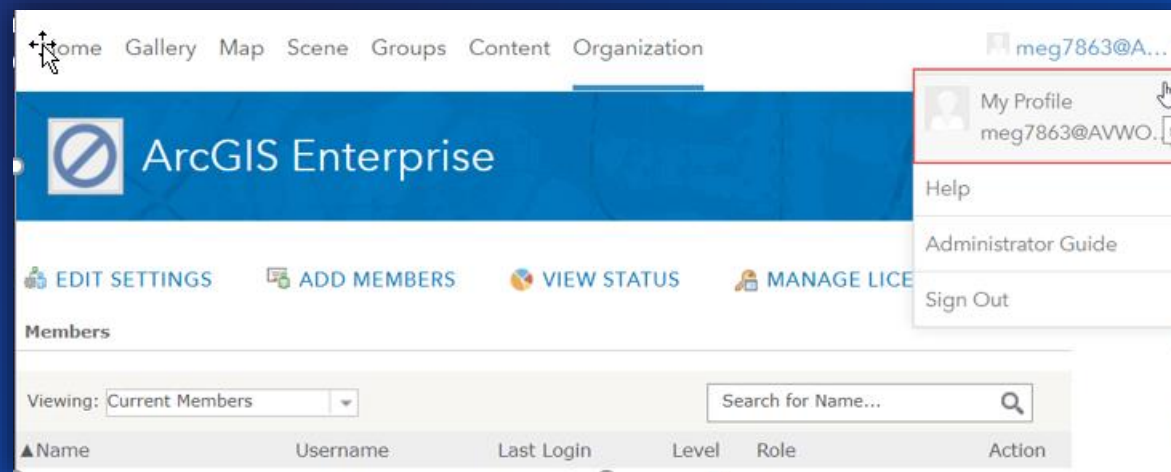
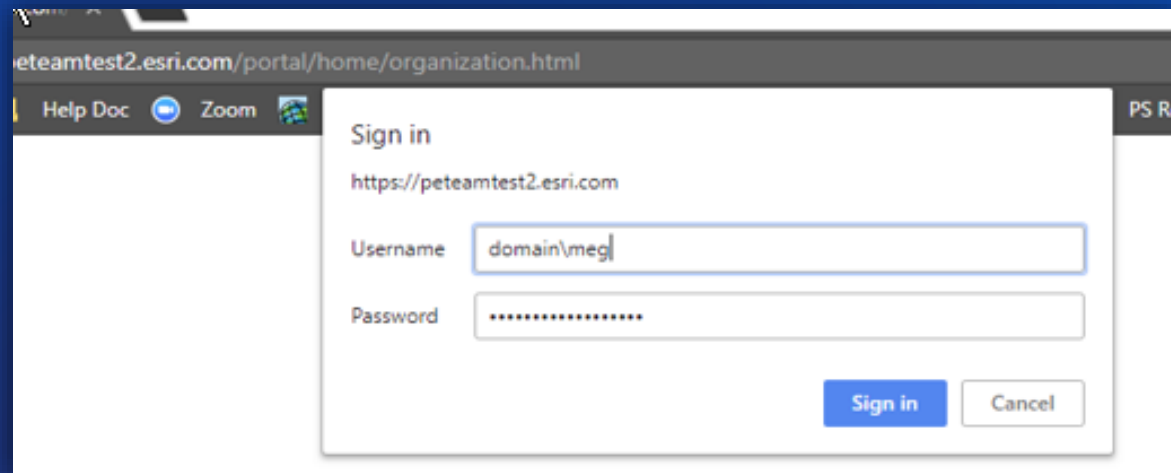




# Security

- **Web Tier**

- IWA, LDAP, PKI
- IT Managed
- Good for internal only deployments



- **DEMO**

# SSL/TLS



# SSL/TLS

- **What is it?**
  - **SSL (Secure Socket Layer):** encryption security for the web, websites using HTTPS
  - **TLS (Transport Layer Security):** an updated, more secure, version of SSL
- **Why is it important?**
  - **Safeguards sensitive data**
  - **A system requirement in Portal for ArcGIS**



# SSL/TLS

**You**



**Bad**

**Intranet**



**Better**

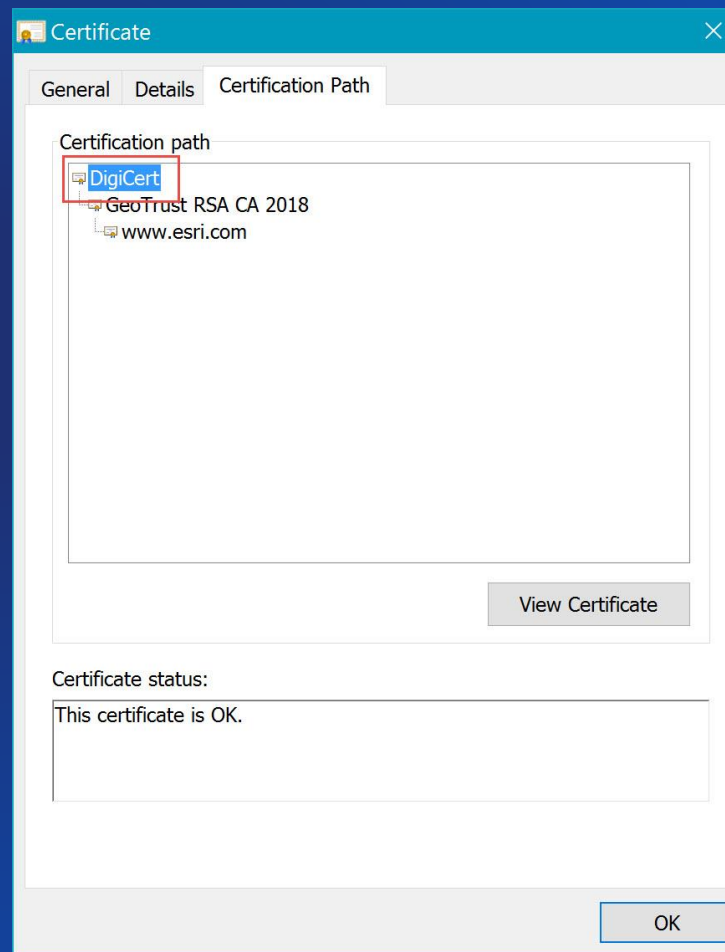
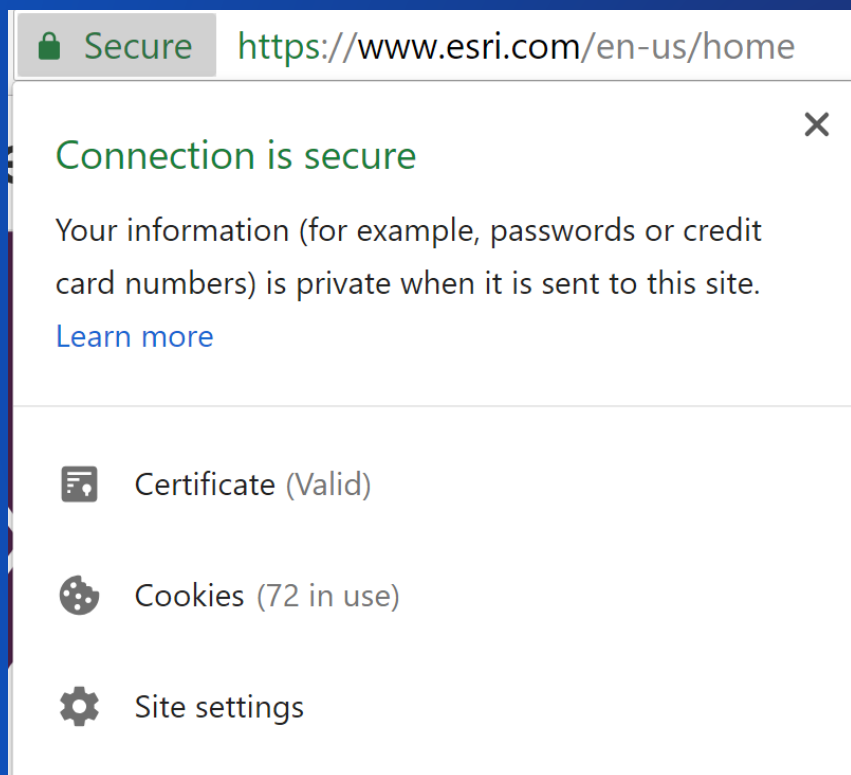
**Internet**



**Best**

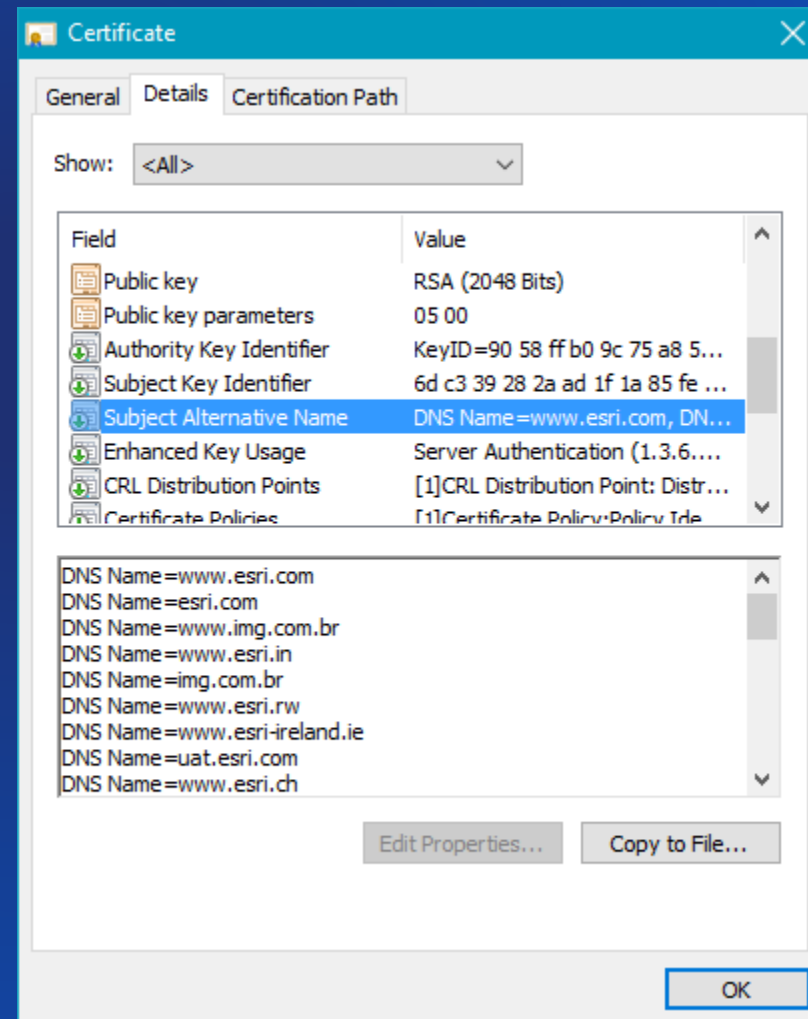
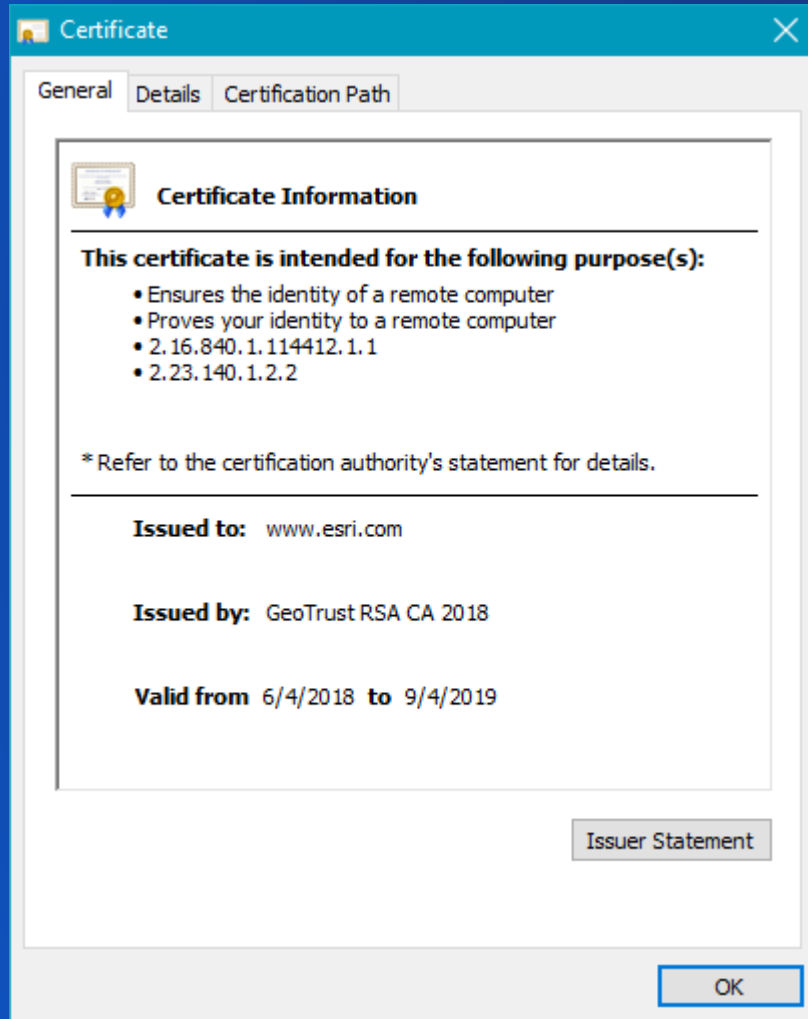
# SSL/TLS

- **Tip #1: Purchase a CA-signed certificate from a trusted Authority**



# SSL/TLS

- Tip #2: make it a multiple domain certificate, i.e. SAN





Putting it all  
together








# Scenario 1

- **Organization: Mom & Pop GIS Inc**
- **Requirements:**
  - **Secure logins for 50 internal staff members Enterprise connected to existing LDAP store**
  - **Sensitive data that can not be shared publicly**
  - **No mobile workflows**

## Scenario 1

	SSL/TLS	Security			Access	
	CA-signed Cert	Web Tier	SAML	Built-in	Internal	External
Scenario 1						

## Scenario 2

- **Organization: City of San Diego**
- **Requirements**
  - **Secure logins for 3,000 government employees + 500 non-government contract workers**
  - **Publicly shared web applications**
  - **Field crews that need connected mobile access**

	SSL/TLS	Security			Access	
	CA-signed Cert	Web Tier	SAML	Built-in	Internal	External
Scenario 1	✓	✓			✓	
Scenario 2	✓		✓	✓	✓	✓

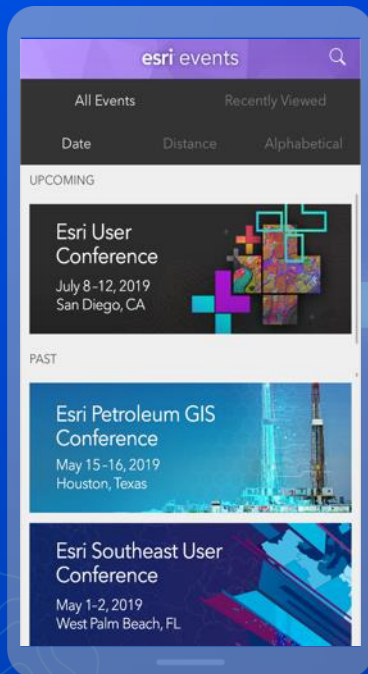
# Questions?

Find us at the “Guiding Your Geospatial Journey” island

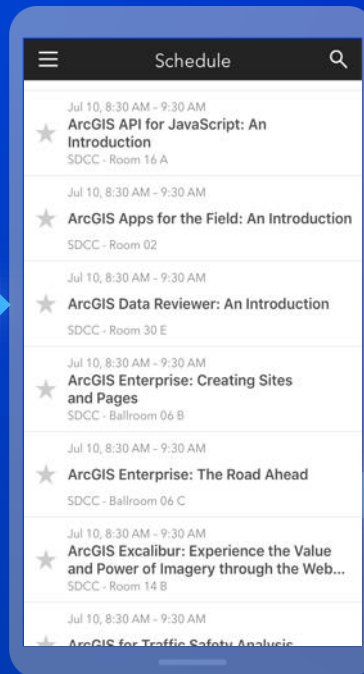


# Please Share Your Feedback in the App

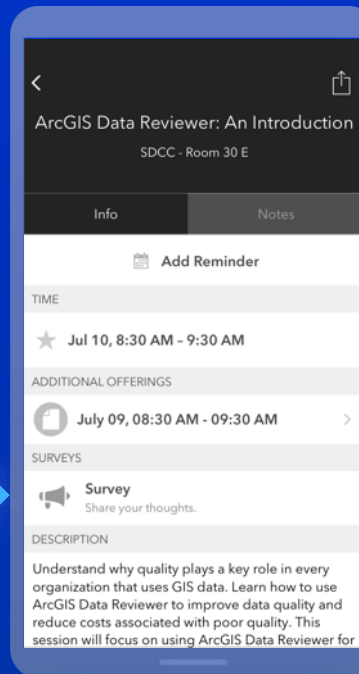
Download the Esri Events app and find your event



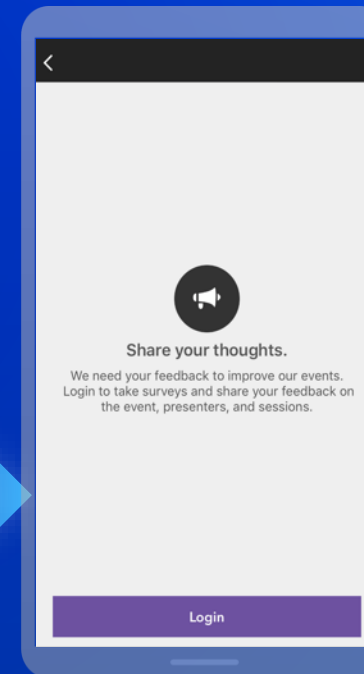
Select the session you attended



Scroll down to "Survey"



Log in to access the survey



Complete the survey and select "Submit"

