

Editing with the ArcGIS API for JavaScript

Bjorn Svensson, Heather Gonzago, JC Franco

👉 Slides & demos: <https://bit.ly/editinguc19> 👉

SEE
WHAT
OTHER
CAN'T

Agenda

- Web editing
- Editor widget
- Different workflows
- Q&A

Data in a feature service

- One or more feature layers
- Editable

Edit your feature layer

ArcGIS REST API

ArcGIS Online

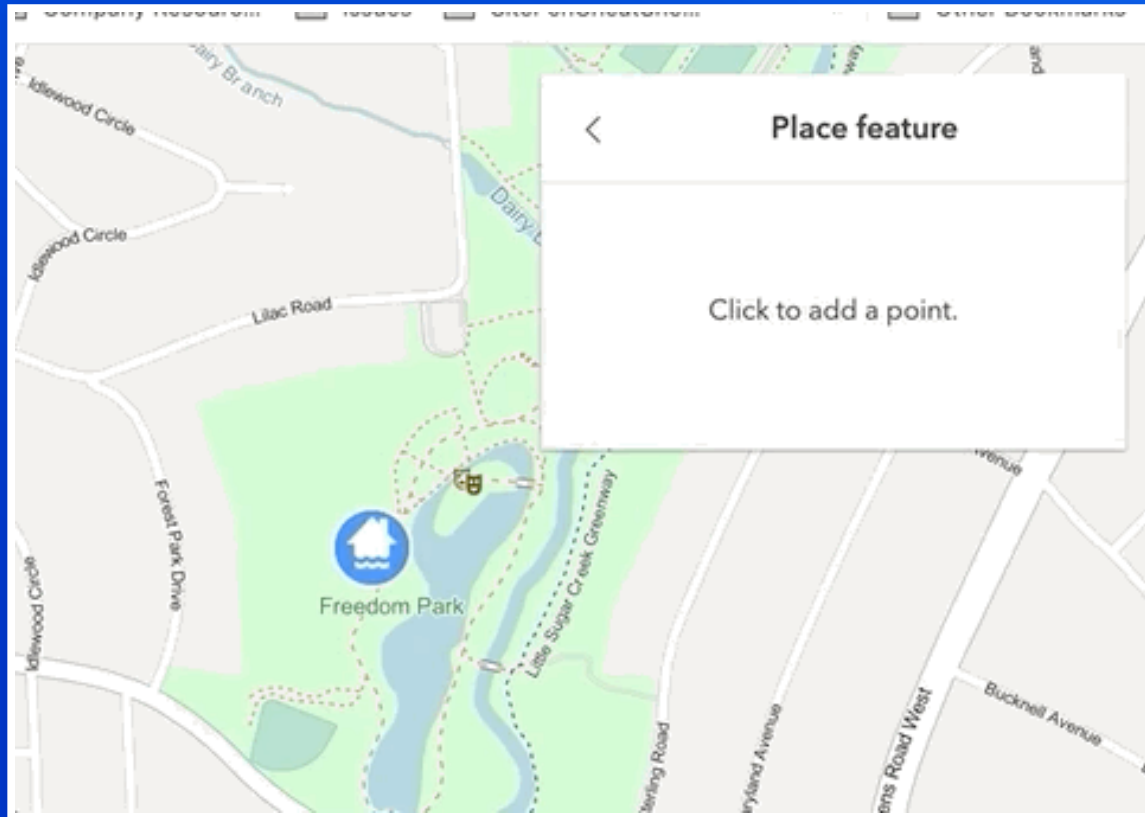
ArcGIS API for Python

ArcGIS API for JavaScript

Web editing in the browser

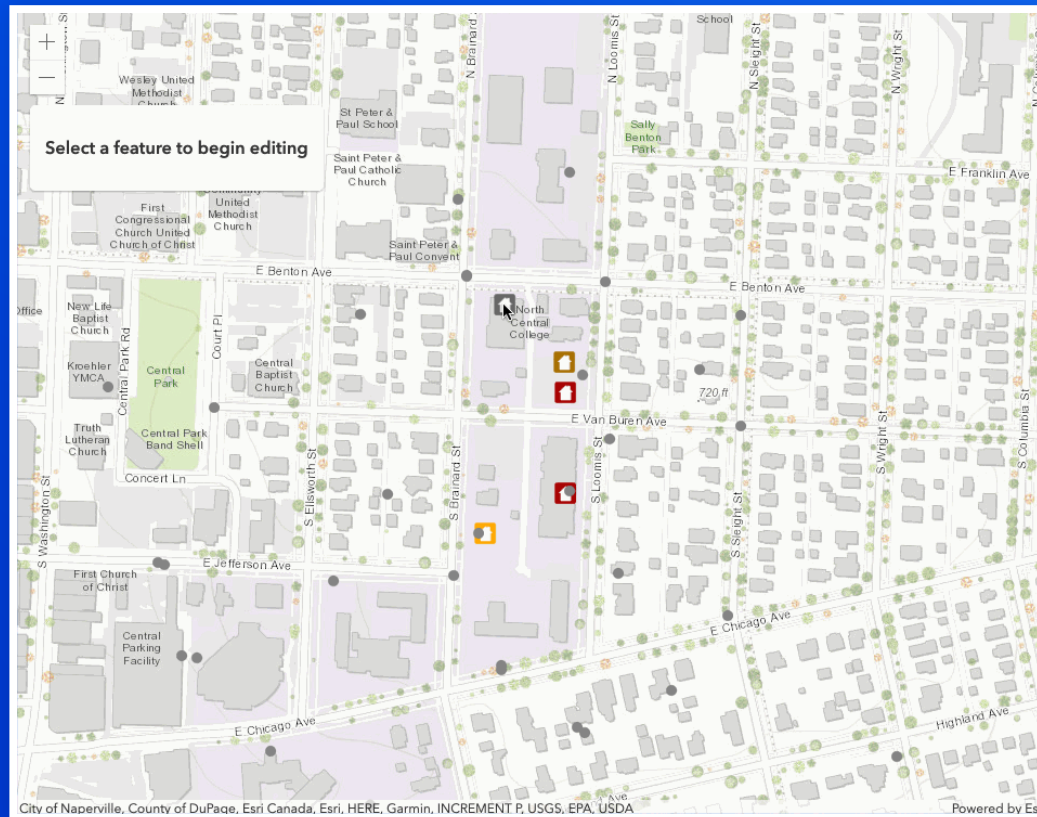
1. What to add: FeatureTemplates
 2. Geometry: Sketch
 3. Fields/attributes: FeatureForm
 4. FeatureLayer.applyEdits
-
5. Editor widget

Editor widget



Different Workflows

Form-based



FeatureForm

FeatureForm

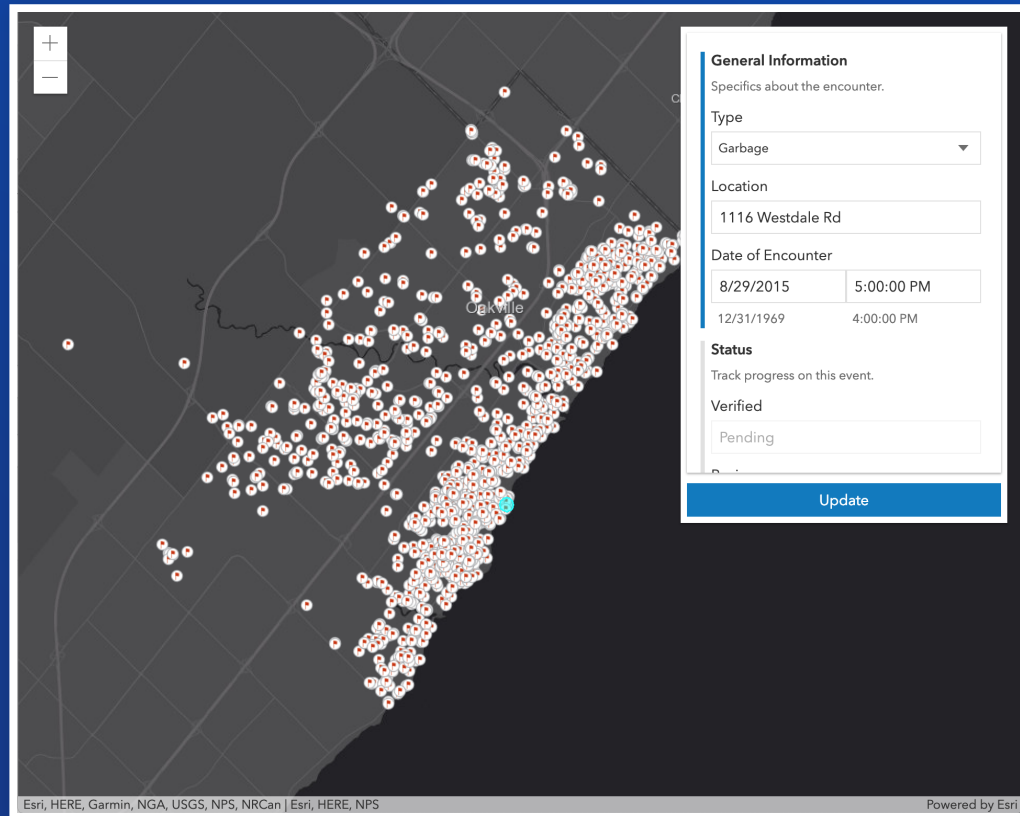
FeatureForm

- Renders input fields from attributes

FeatureForm

- Renders input fields from attributes
- Configurable
 - Field order
 - Label/description
 - Groups
 - Visibility expression

FeatureForm Demo



The screenshot displays a web application interface. On the left, a map shows a geographical area with numerous red circular markers, each containing a small white icon. The map is labeled 'Oakville'. A zoom control with '+' and '-' buttons is visible in the top-left corner of the map area. On the right, a 'FeatureForm' is overlaid. The form has a title 'General Information' and a subtitle 'Specifics about the encounter.' It contains several input fields: 'Type' (a dropdown menu showing 'Garbage'), 'Location' (a text field with '1116 Westdale Rd'), and 'Date of Encounter' (two date/time pickers showing '8/29/2015 5:00:00 PM' and '12/31/1969 4:00:00 PM'). Below these is a 'Status' section with the subtitle 'Track progress on this event.' and a 'Verified' dropdown menu showing 'Pending'. At the bottom of the form is a blue 'Update' button. The bottom of the application window shows a footer with the text 'Esri, HERE, Garmin, NGA, USGS, NPS, NRCan | Esri, HERE, NPS' on the left and 'Powered by Esri' on the right.

General Information
Specifics about the encounter.

Type
Garbage

Location
1116 Westdale Rd

Date of Encounter
8/29/2015 5:00:00 PM
12/31/1969 4:00:00 PM

Status
Track progress on this event.


Verified
Pending


Update

Esri, HERE, Garmin, NGA, USGS, NPS, NRCan | Esri, HERE, NPS Powered by Esri

Putting it all together

Use case: Report Bike Theft

 Report Bike Theft

Select Location
Use current location for the incident or search to find the address
 

Enter Information

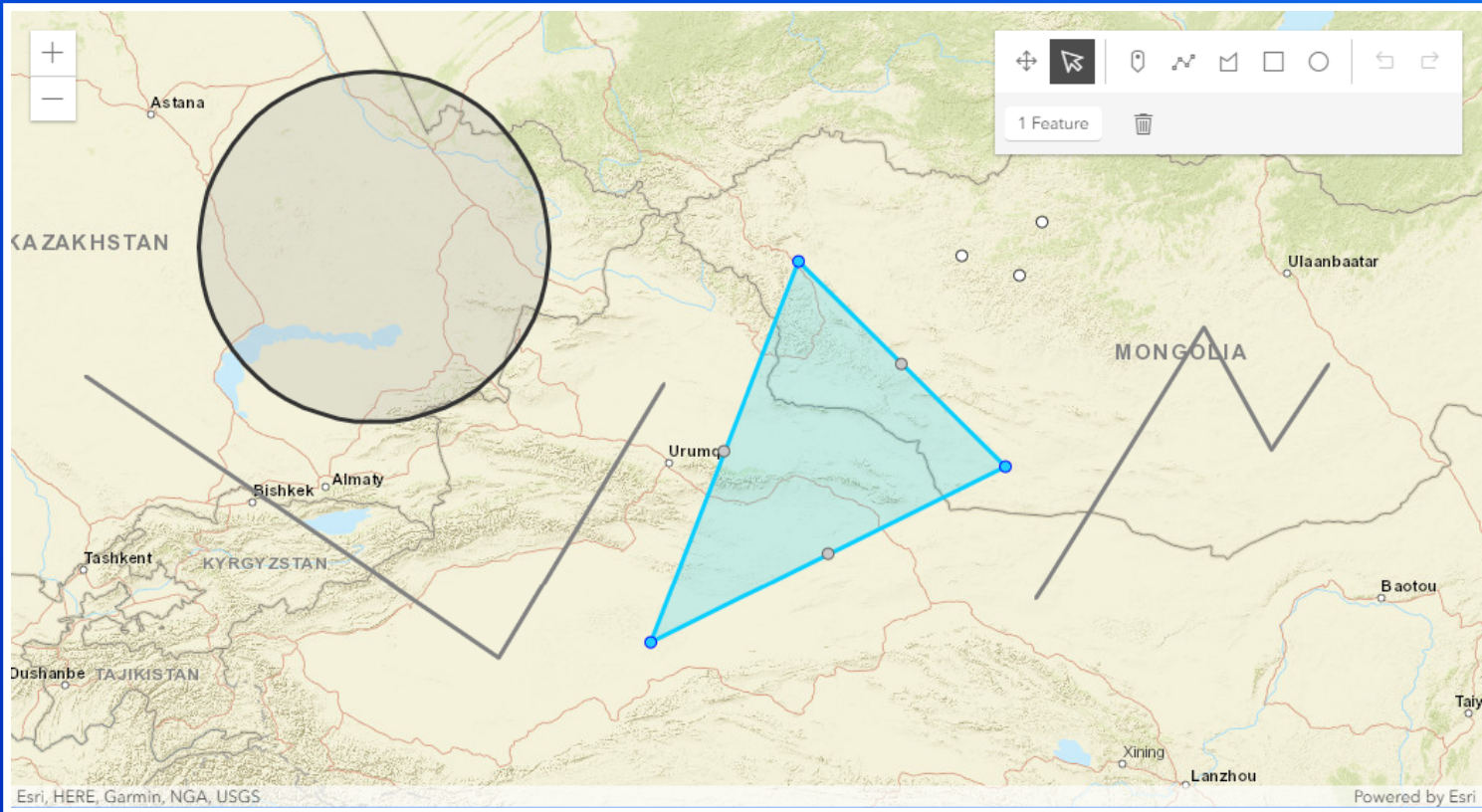
General bike theft information
Applicable if you have been a victim of bike theft
Was bike locked when stolen?

Did you replace your stolen bike?

Police information
General information on reporting to police

Submit Report

Geometry-based



👉 Sketch

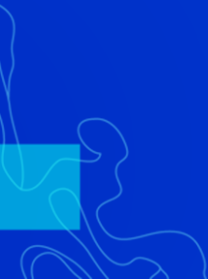
Sketch and SketchViewModel

- Provides ability to manipulate geometries
- The widget provides out-of-the-box tools for creating and updating graphics
 - point, polyline, polygon, rectangle and circle geometries
- Keyboard shortcuts
- Works with with graphics stored in its associated layer (`GraphicsLayer`) property.

Editor or Sketch?

- Use Sketch in place of Editor for customized workflows, e.g.
 - Create own custom tool that Editor does not yet have, e.g. Cut
 - Updating multiple geometry types simultaneously
 - Configurable tool options (create and update)

SketchViewModel with applyEdits

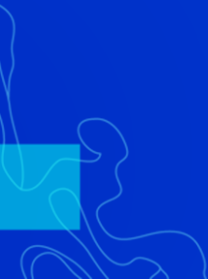


Sketch widget with applyEdits

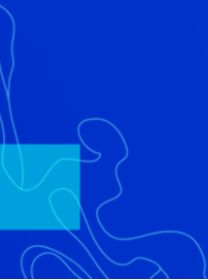


Sketch with custom tools

Use case: Custom sketch tool functionality using
GeometryEngine



SketchVM with custom snapping and validation



FeatureLayer without feature service

Use `FeatureLayer.source` (instead of `FeatureLayer.url`) for an array of client-side features.

Demo



Recap

- Web editing
- Editor widgets
- Different workflows



our apps and suggestions with us...

apps!

impressions on the latest API

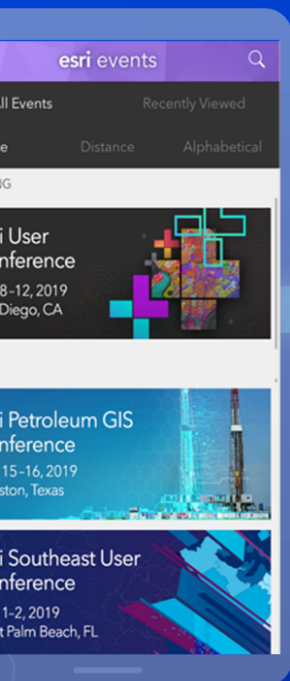
for next UC or Developer Summit related to web development

A detailed topographic map of a mountainous region, featuring contour lines, peaks, and valleys. The map is rendered in a color palette of blues, greens, and browns, with a blue rectangular box overlaid in the center.

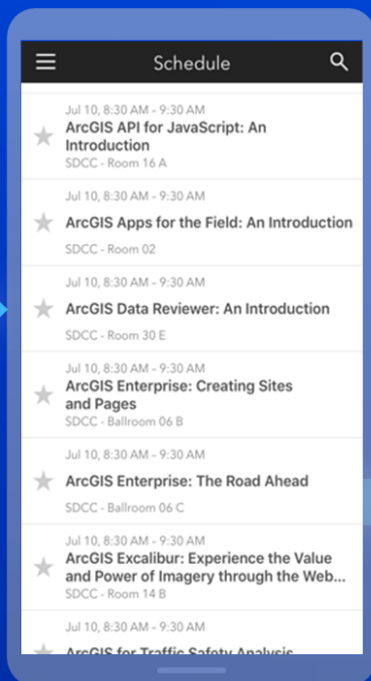
jsapi_pm@esri.com

Please Share Your Feedback in the App

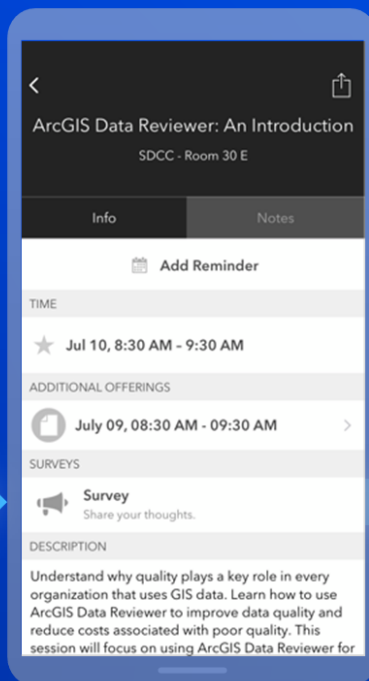
Download the Esri Events app and find your event



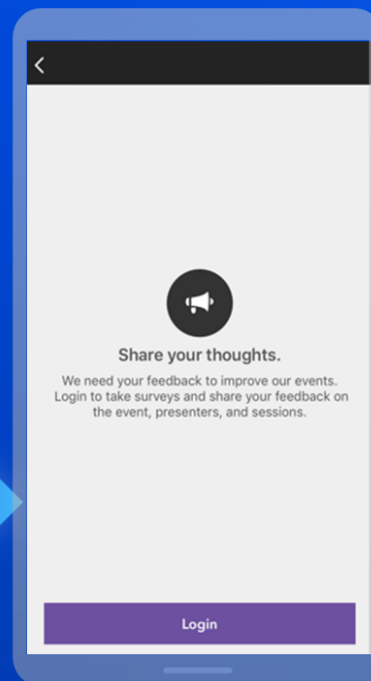
Select the session you attended



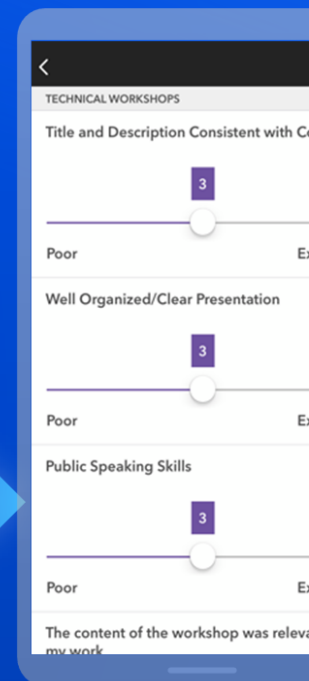
Scroll down to "Survey"



Log in to access the survey



Complete the survey and select "Submit"



Questions?

<http://bit.ly/editinguc19>

<https://developers.arcgis.com/javascript/>

Thank You!

