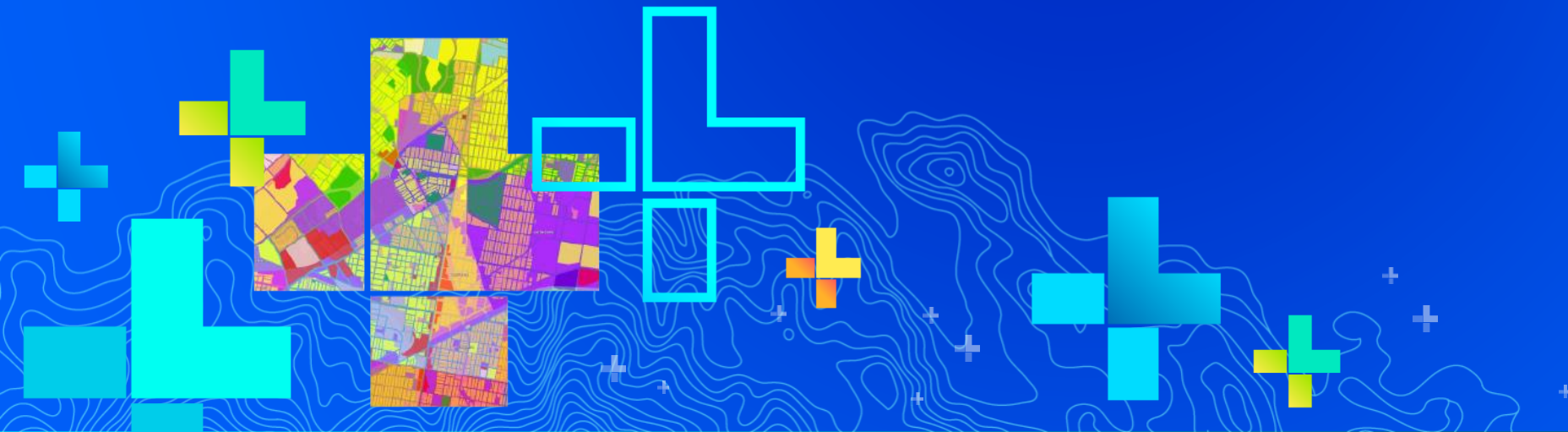


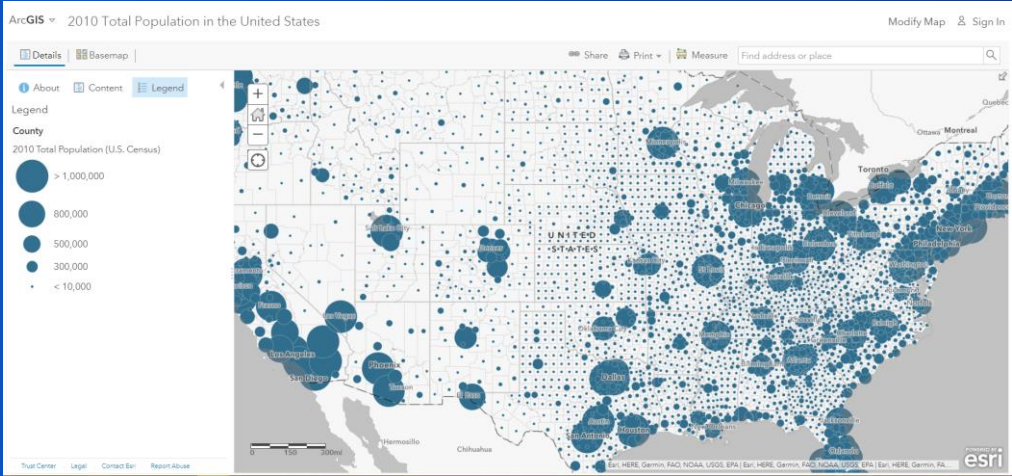
# ArcGIS StoryMaps: Telling Stories with Time

Lisa Berry

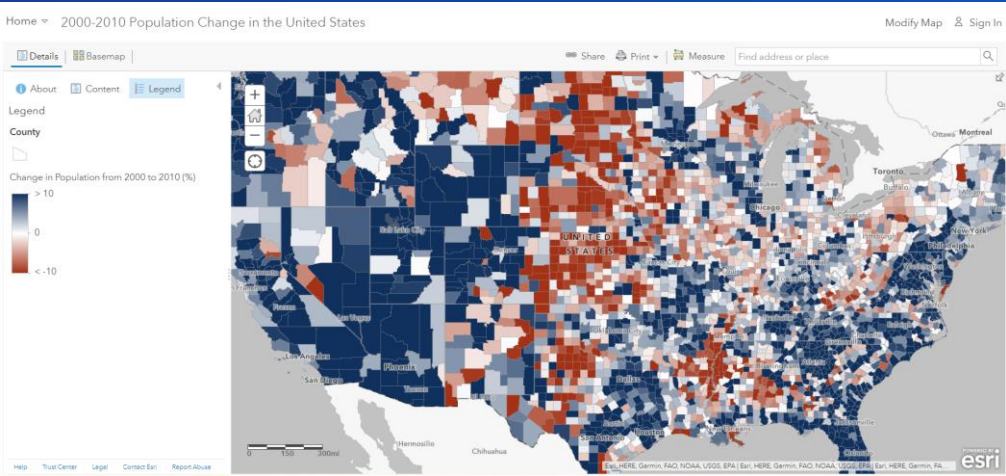


# Many different ways to tell stories with time

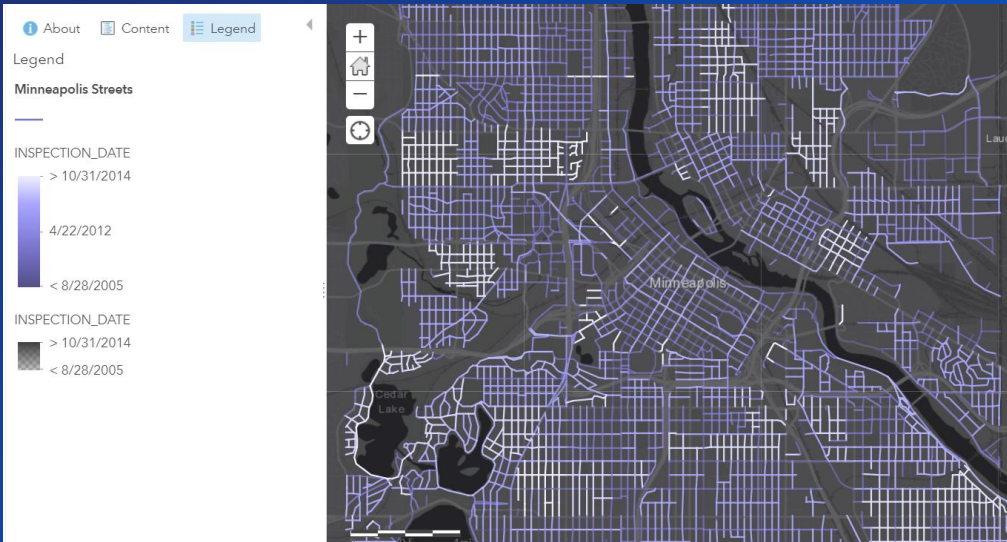
## Point in time



## Change over time



## Map time with a date/time field



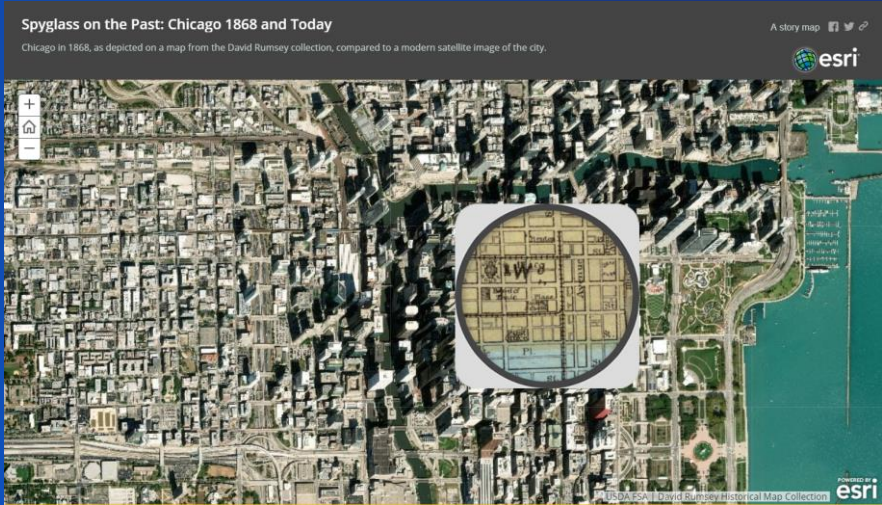


# Use different StoryMap templates

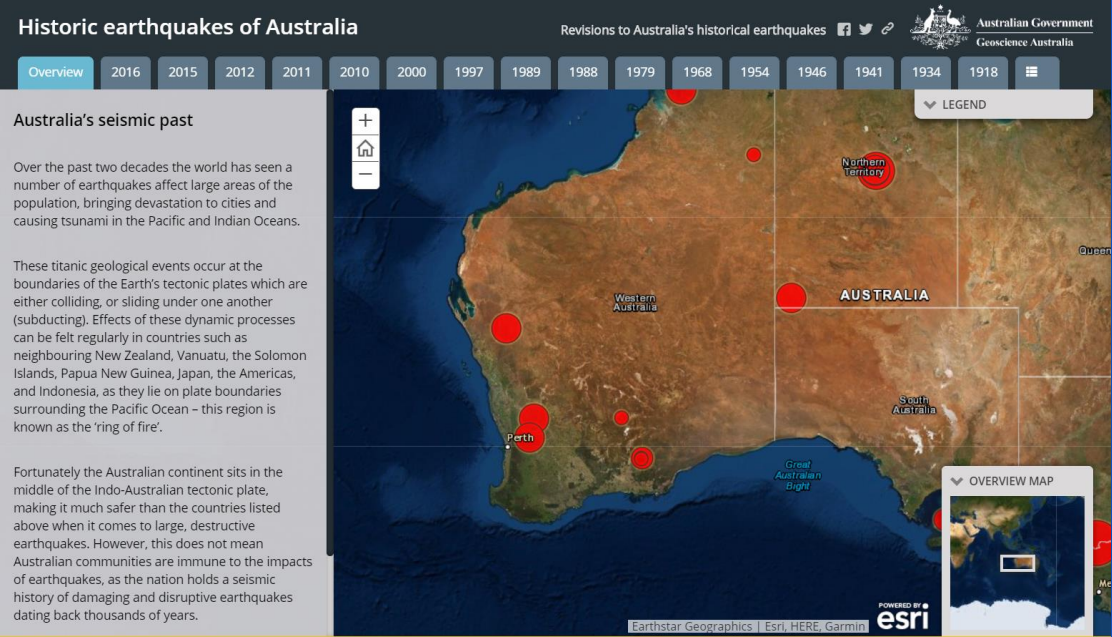
## Swipe



## Spyglass



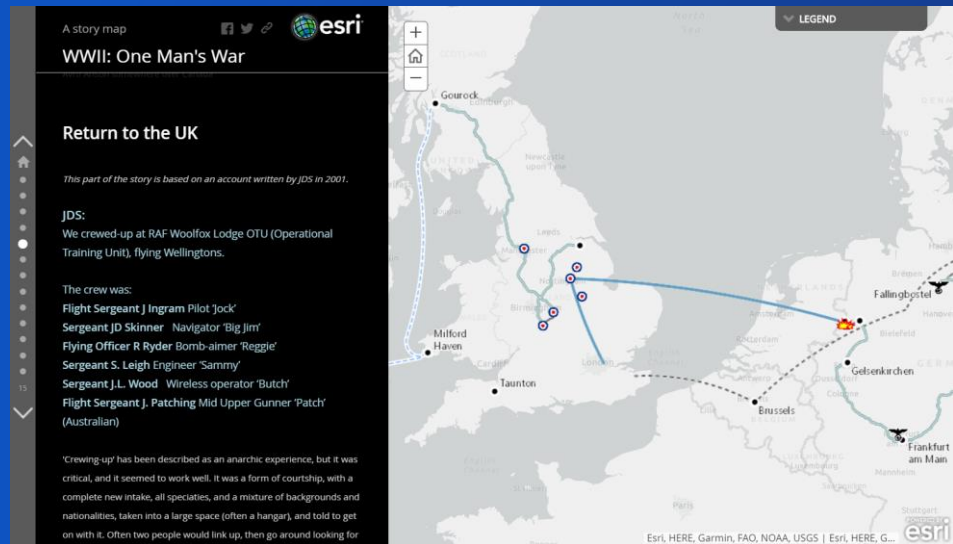
## Tabbed



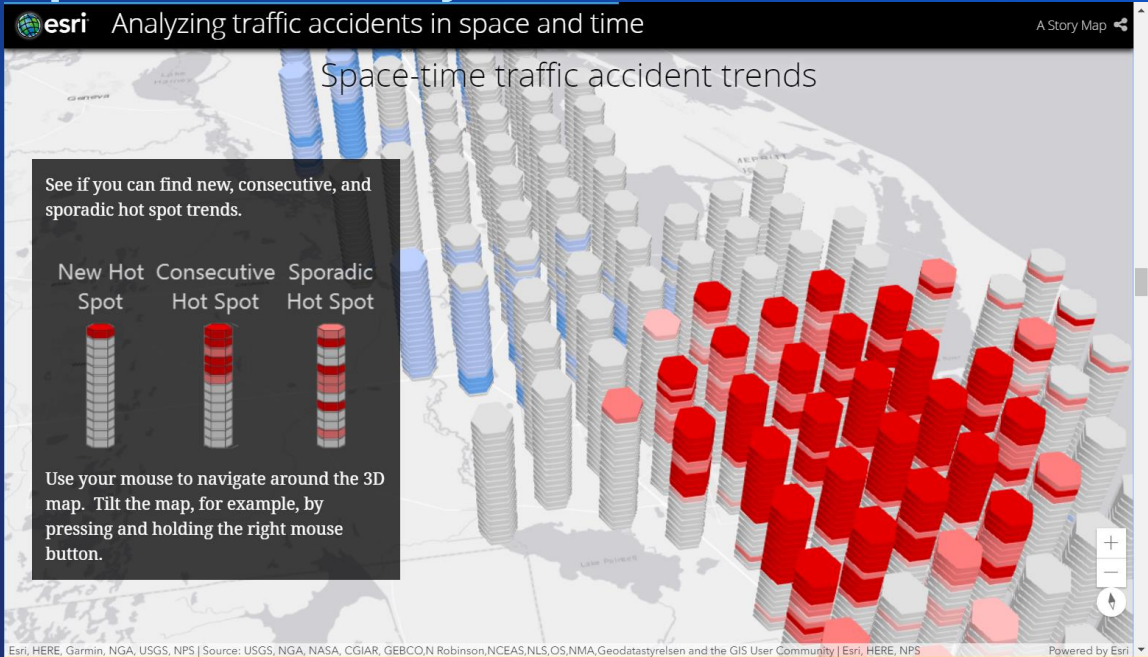


# Other ways to work with time

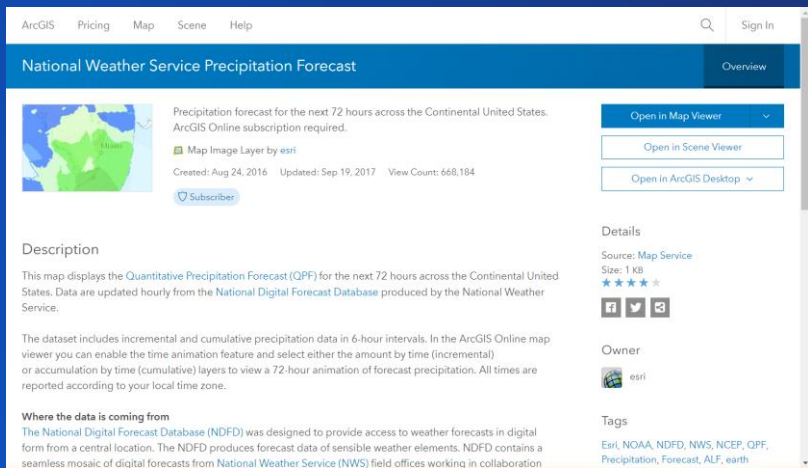
## Map Journal



## Space-Time Analysis Tools



## Ready-to-use time enabled Living Atlas layers



## [Visit this blog for resources](#)


ArcGIS Blog

OverviewTopics ▾

Story Maps

# Showing Time in Story Maps

May 05, 2017

Owen Evans

Time is a theme that appears in many stories. For instance, some interesting story maps that include time show tracking the spread of diseases like [Zika](#) or [white nose syndrome](#) (which affects bats), [finding patterns in where and when car accidents occur](#) to help make roads safe, or the [history of national parks in the US](#).

To show time in a story map you first need to publish or find layers that show temporal data and add them to a web map. There are several ways temporal data can be transformed into layers, and how the data is published and presented may dictate – or at least influence – how you show it in a story map. This post

