

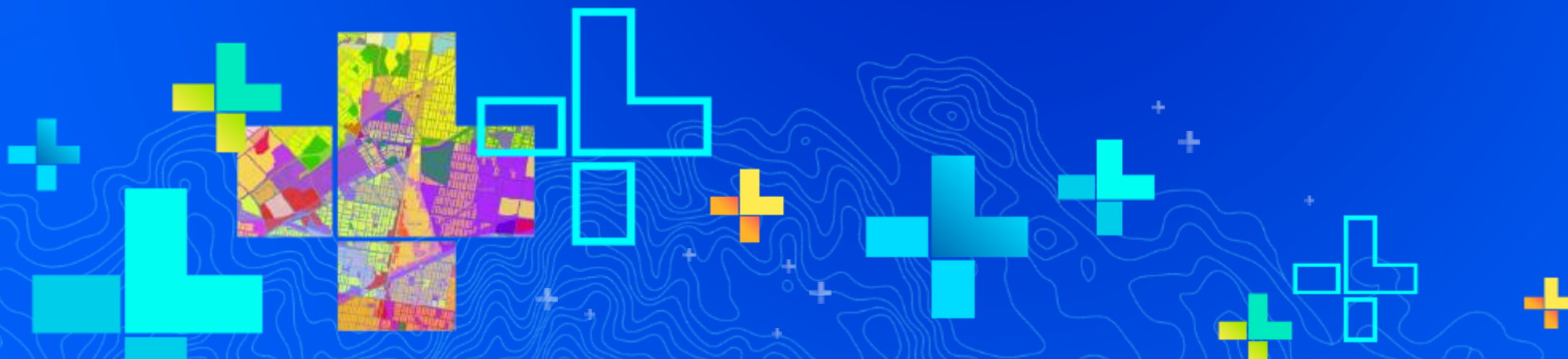


Explorer for ArcGIS: an introduction

Brent Pierce

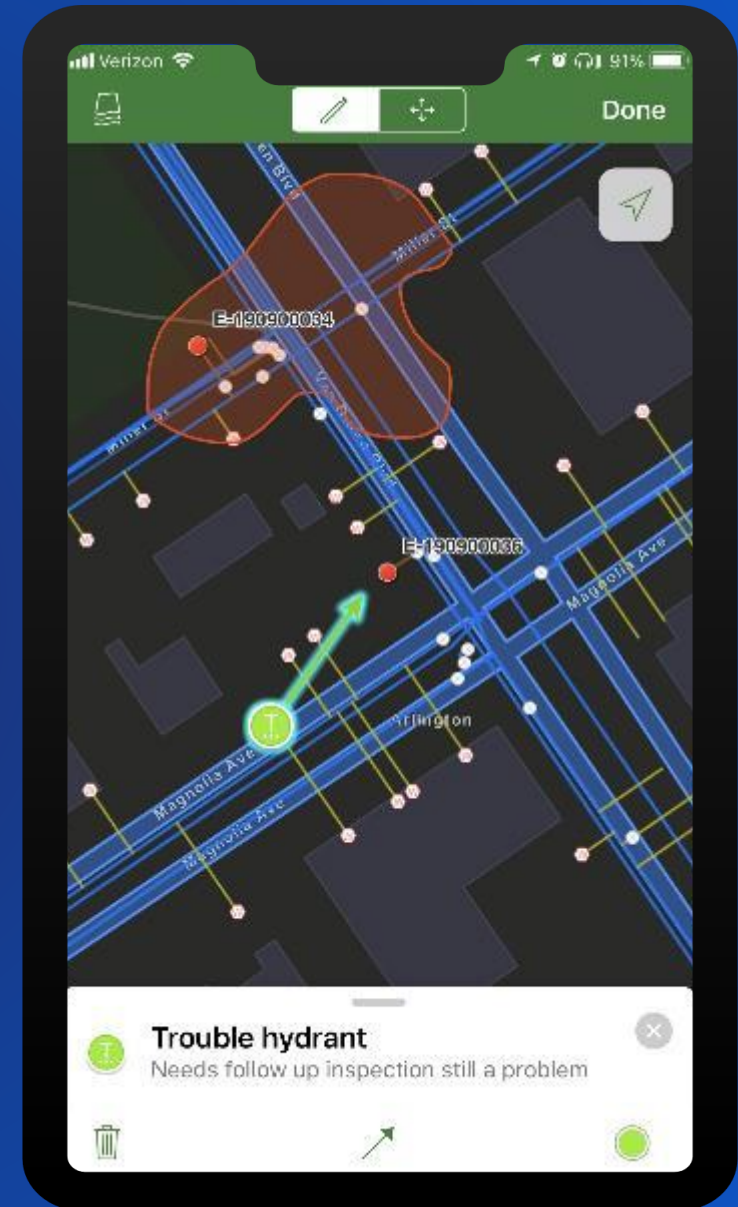
Scott Ball

SEE
WHAT
OTHERS
CAN'T



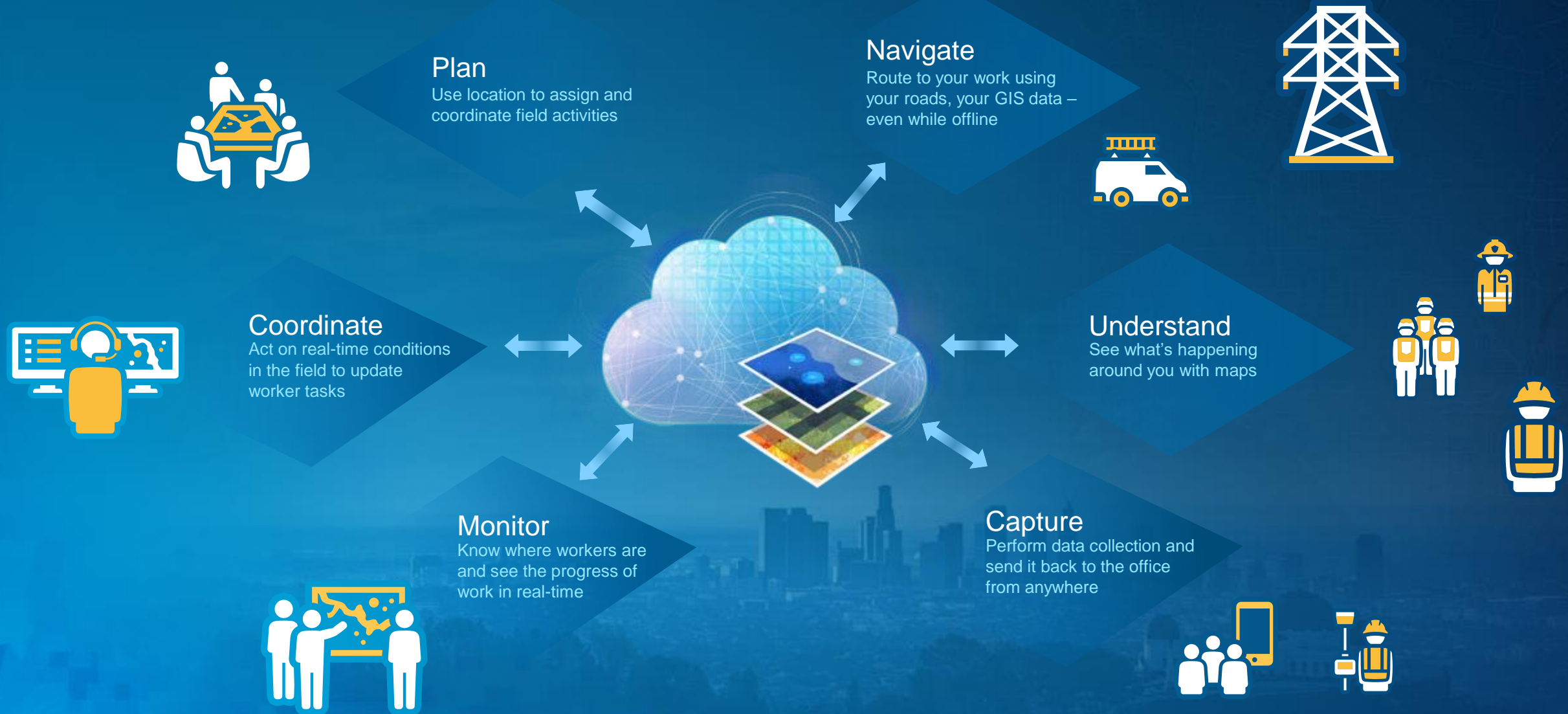
Intro to Explorer Session Agenda

- Our approach to Field Operations
- What is Explorer?
- Common use cases
- Overview of features
- Demos
- Q&A



Field Operations

Location-enable all phases of field work



Field Operations

Location-enable all phases of field work



Enhance workflows by pairing apps

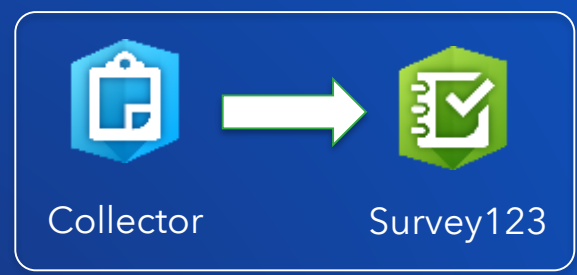
Collect and Monitor



Third Party Integrations



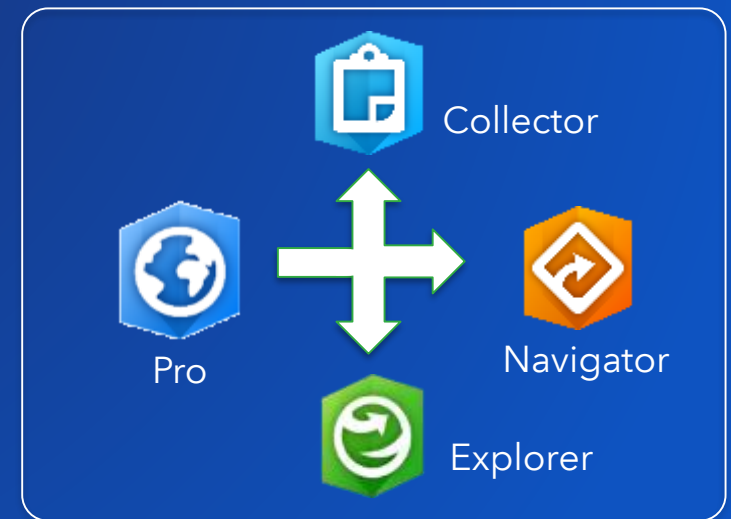
Workforce Launchpad



Forms + Maps



Prepare - Field





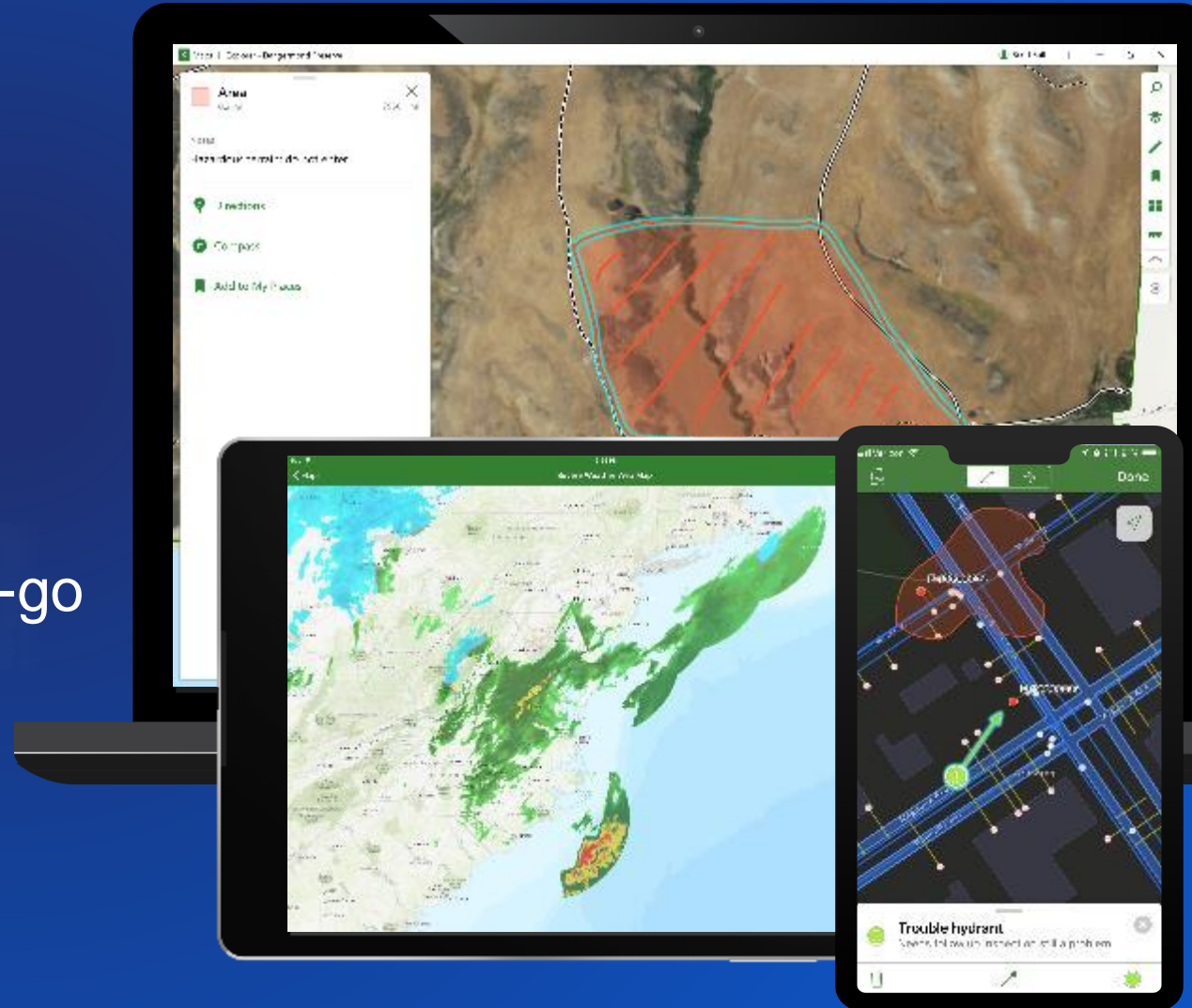
Explorer for ArcGIS

Maps at your fingertips

View your maps anywhere

Easily find field assets

Create and share notes on-the-go





Common uses

Explorer for ArcGIS



Common use cases

Explorer for ArcGIS

1. Maintain situational awareness in the field
2. Access detailed GIS maps and data while on-the-go
3. Provide maps and data to contractors or other 3rd parties



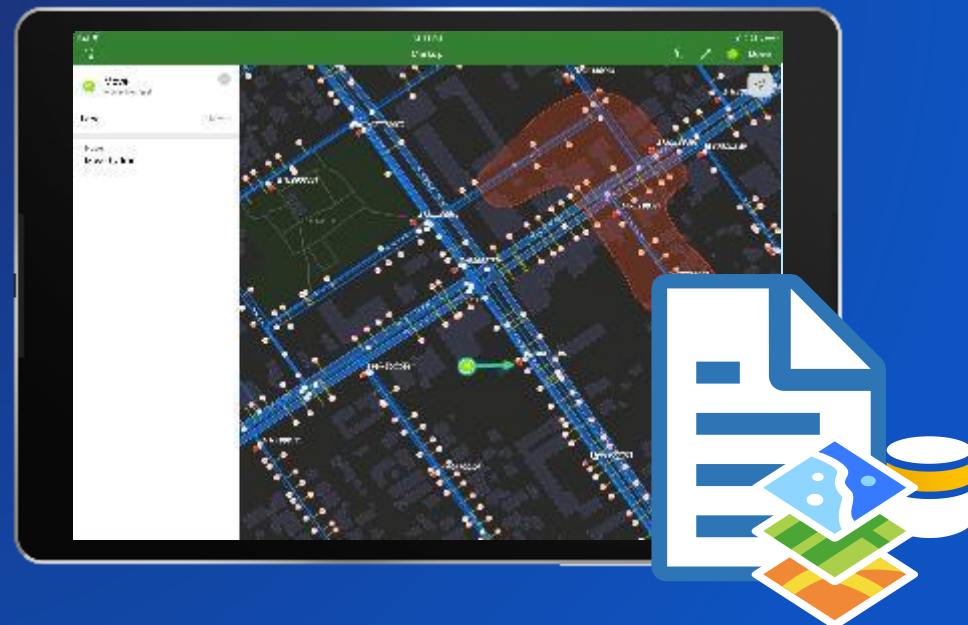


Common use cases

Explorer for ArcGIS

**Work with your maps while
connected
or while offline**

1. Maintain situational awareness in the field
2. **Access detailed GIS maps and data while on-the-go**
3. Provide maps and data to contractors or other 3rd parties





Common use cases

Explorer for ArcGIS

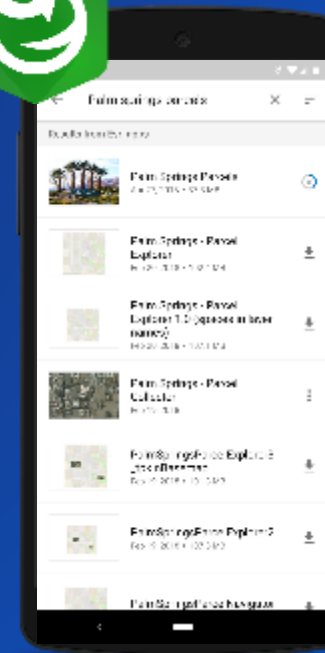
1. Maintain situational awareness in the field
2. **Access detailed GIS maps and data while on-the-go**
3. Provide maps and data to contractors or other 3rd parties

Pre-planned areas



Map author creates
pre-planned areas
within a web map

Mobile user
downloads area(s)
to device



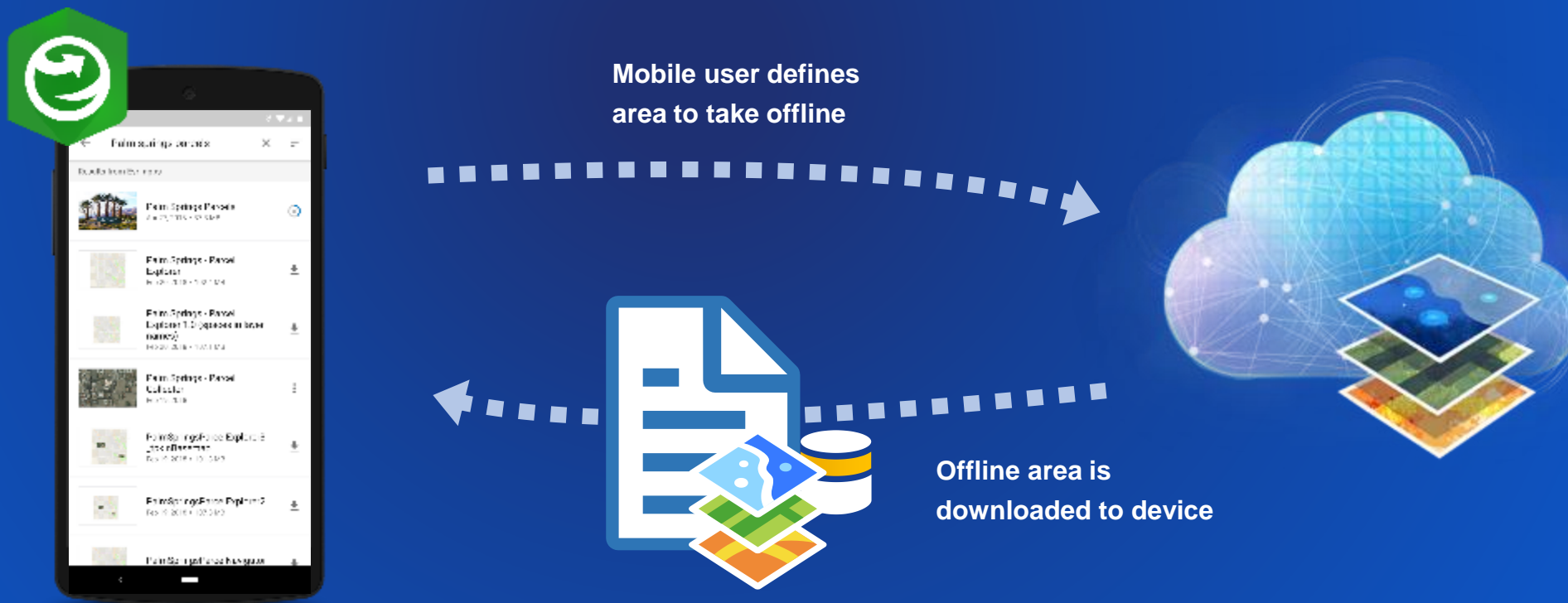


Common use cases

Explorer for ArcGIS

1. Maintain situational awareness in the field
2. **Access detailed GIS maps and data while on-the-go**
3. Provide maps and data to contractors or other 3rd parties

On-demand offline areas





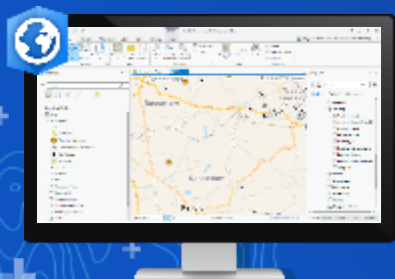
Common use cases

Explorer for ArcGIS

1. Maintain situational awareness in the field
2. **Access detailed GIS maps and data while on-the-go**
3. Provide maps and data to contractors or other 3rd parties

Mobile map packages (mmpk)

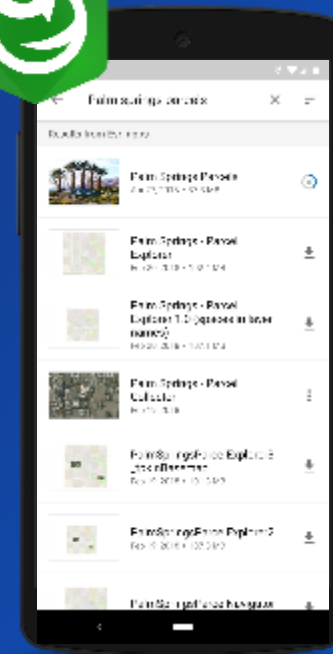
Create Mobile Map Package
in ArcGIS Pro



Upload to ArcGIS
Enterprise or Online

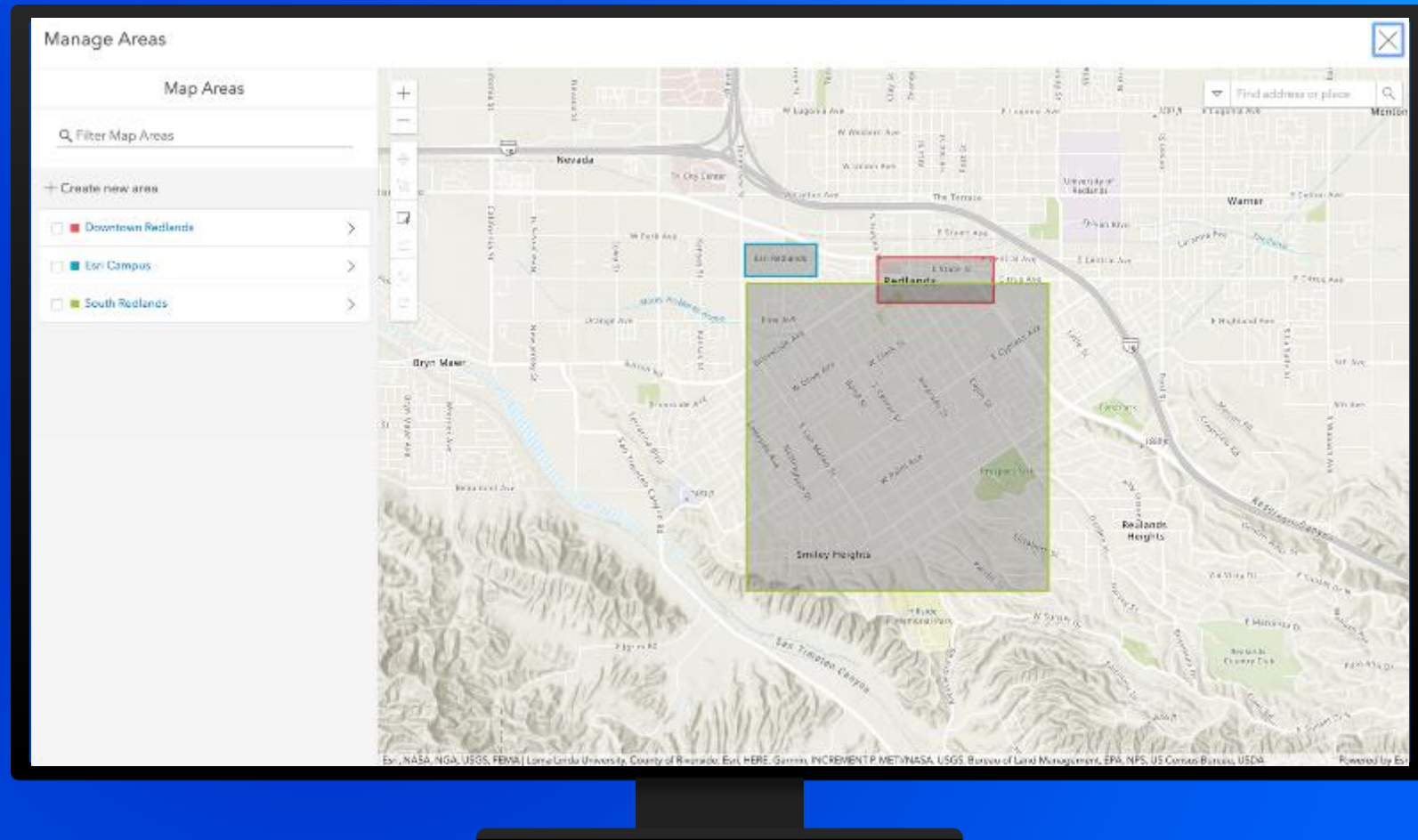


Mobile user
downloads mmpk
to device



Demo

Creating and using offline maps





Common use cases

Explorer for ArcGIS

1. Maintain situational awareness in the field
2. Access detailed GIS maps and data while on-the-go
3. **Provide maps and data to contractors or other 3rd parties**



Email
FTP site
Web host
OneDrive
Dropbox

Burned CD
Thumb drive
Carrier pigeon
You get the point



Contractors



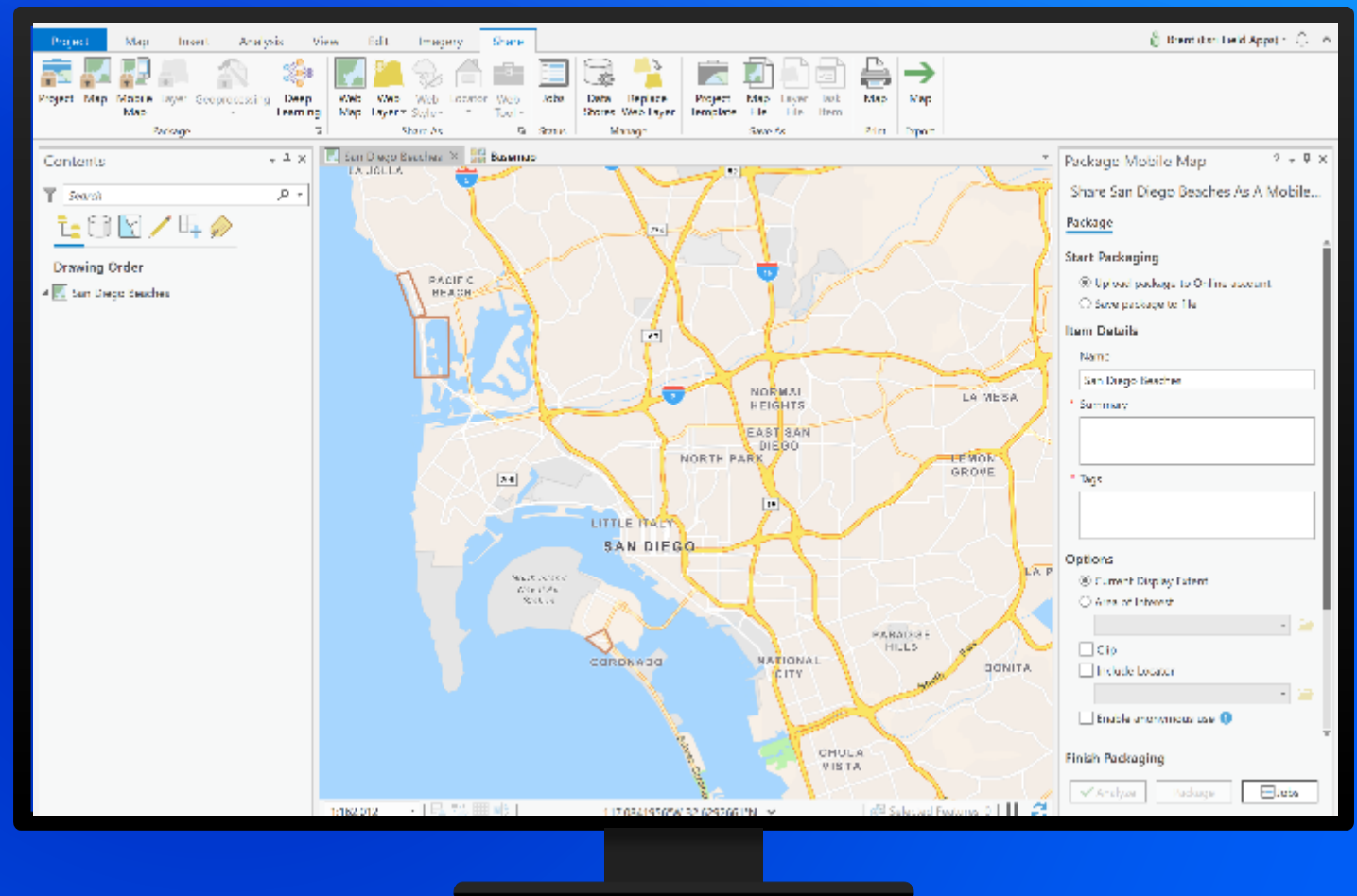
First
responders



Other
agencies

Demo

Creating and using public maps





Feature overview

Explorer for ArcGIS

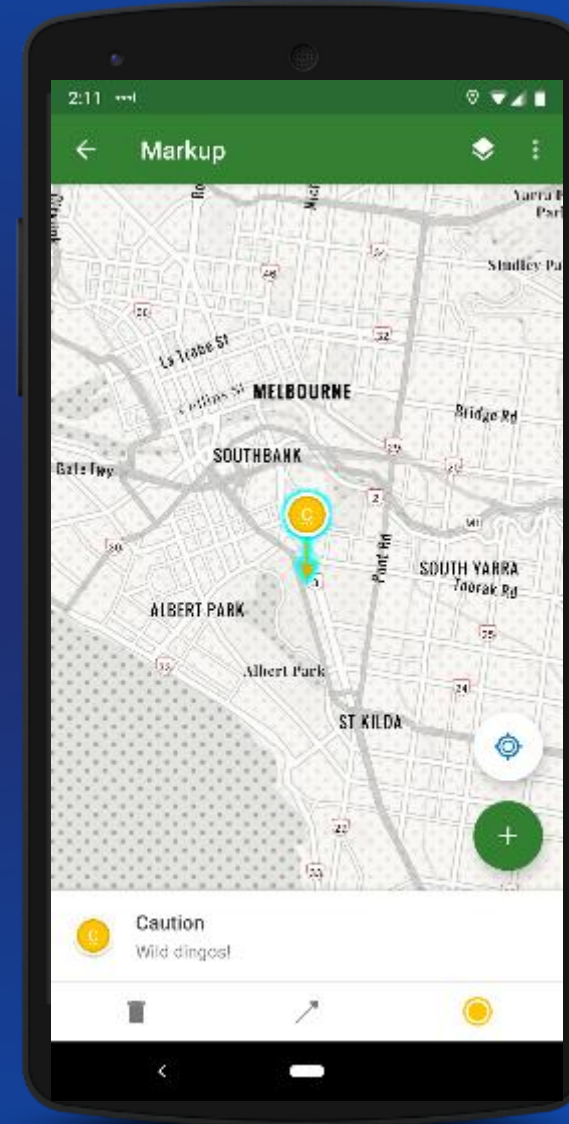


Feature overview

Explorer for ArcGIS

What can it do?

1. Create markup



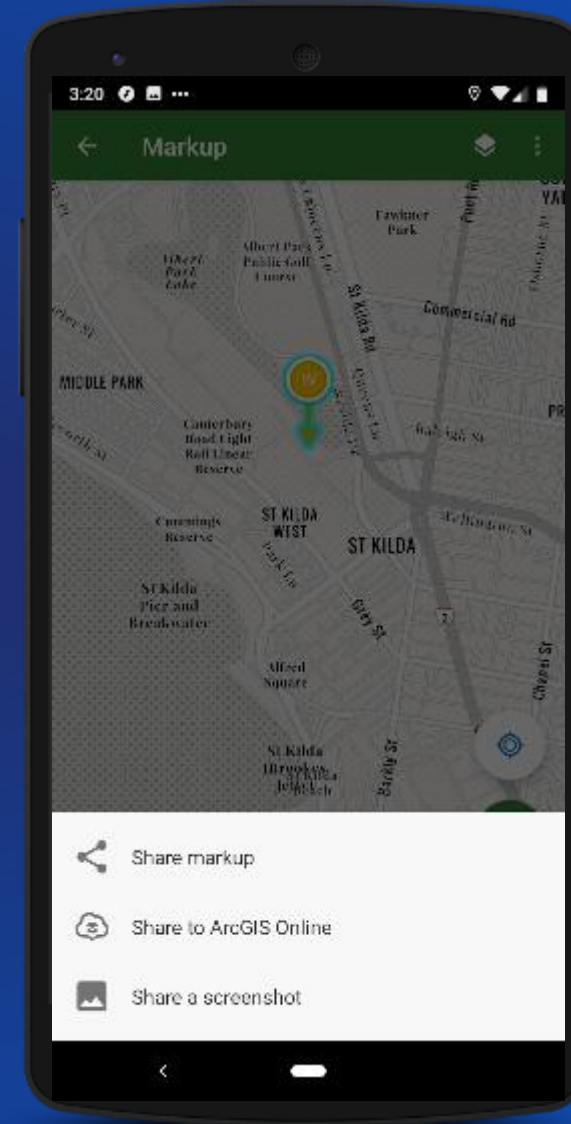


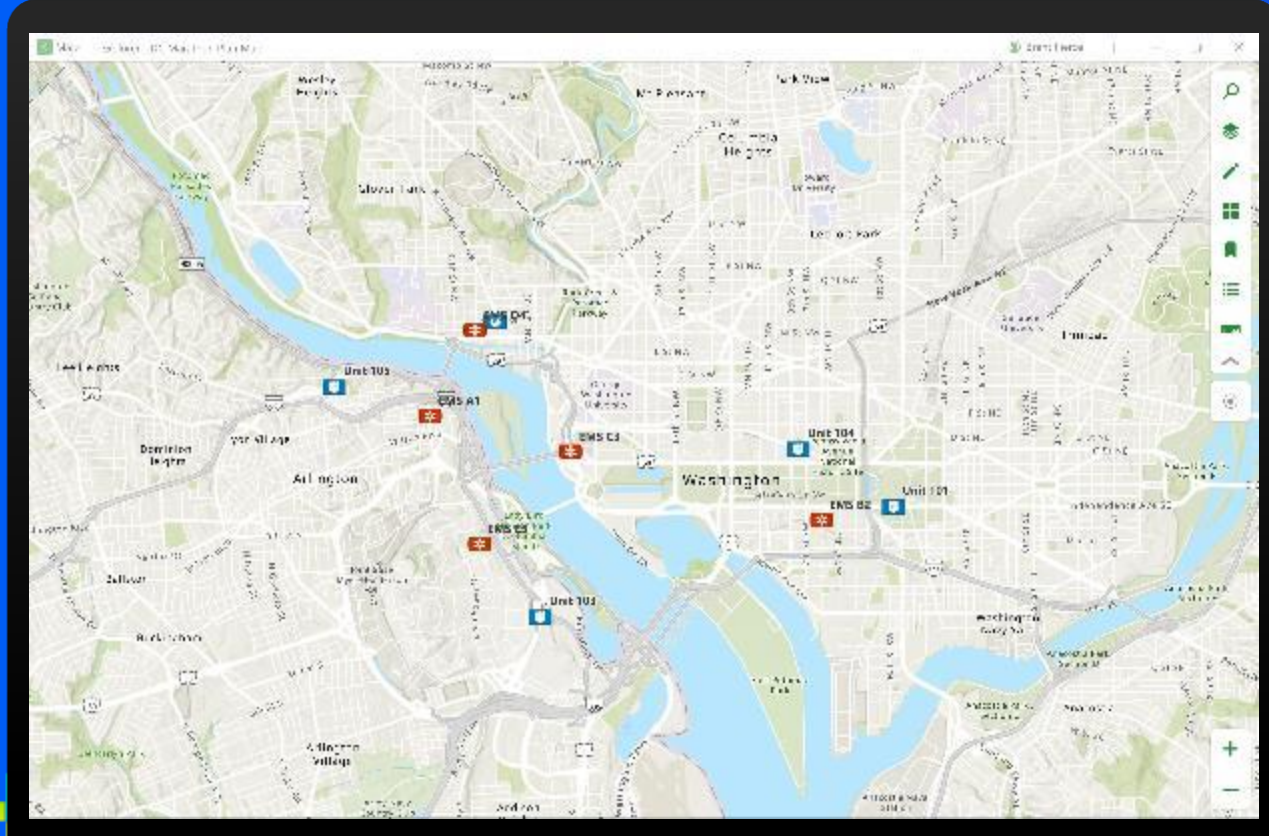
Feature overview

Explorer for ArcGIS

What can it do?

1. Create markup
2. Share markup





Demo

Creating and sharing markup



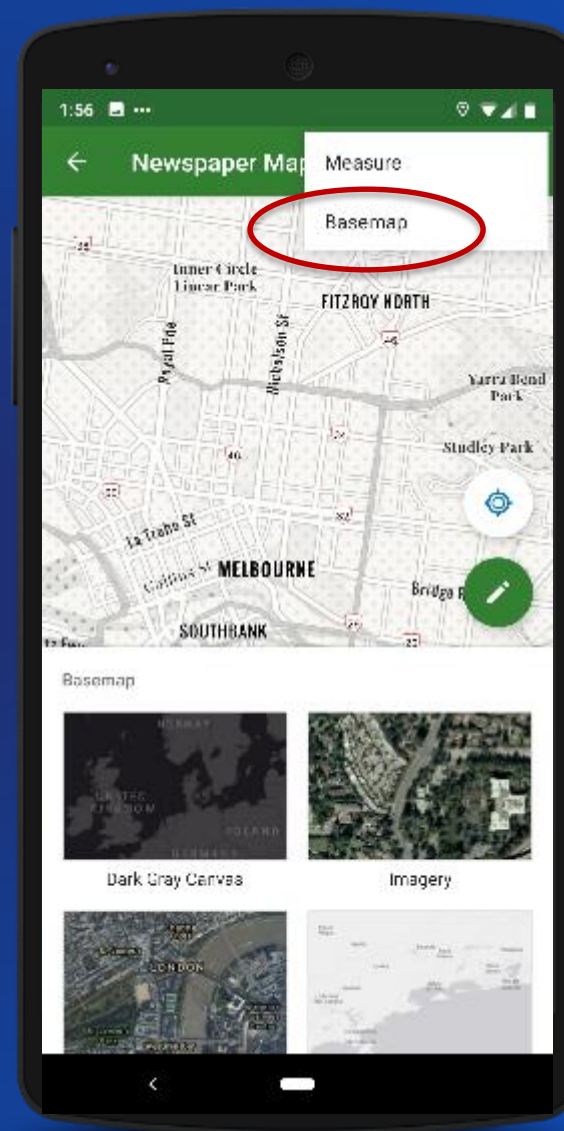


Feature overview

Explorer for ArcGIS

What else can it do?

1. Basemaps



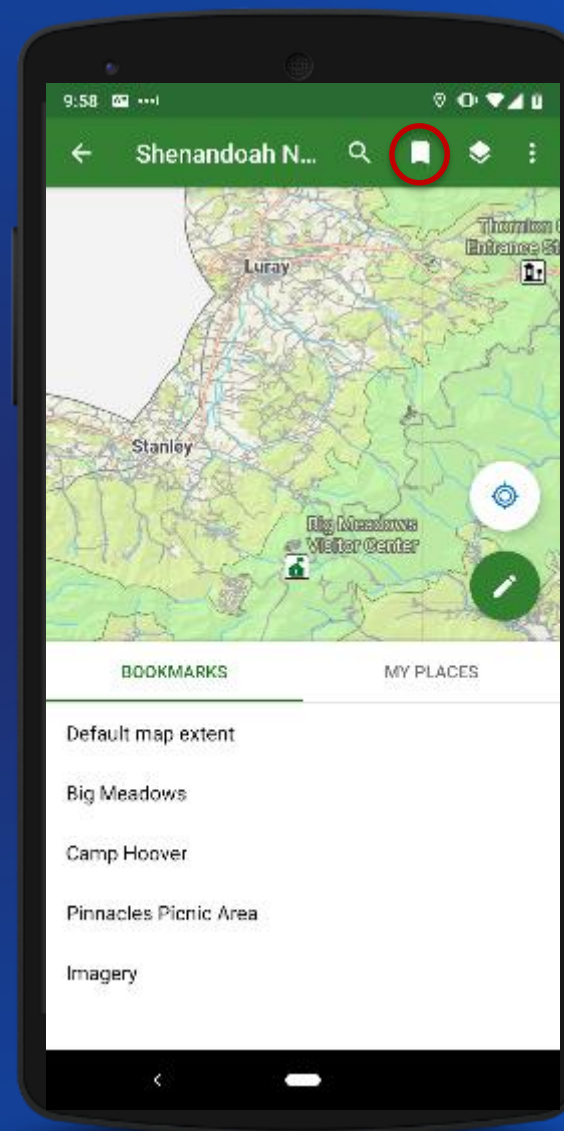


Feature overview

Explorer for ArcGIS

What else can it do?

1. Basemaps
2. Bookmarks



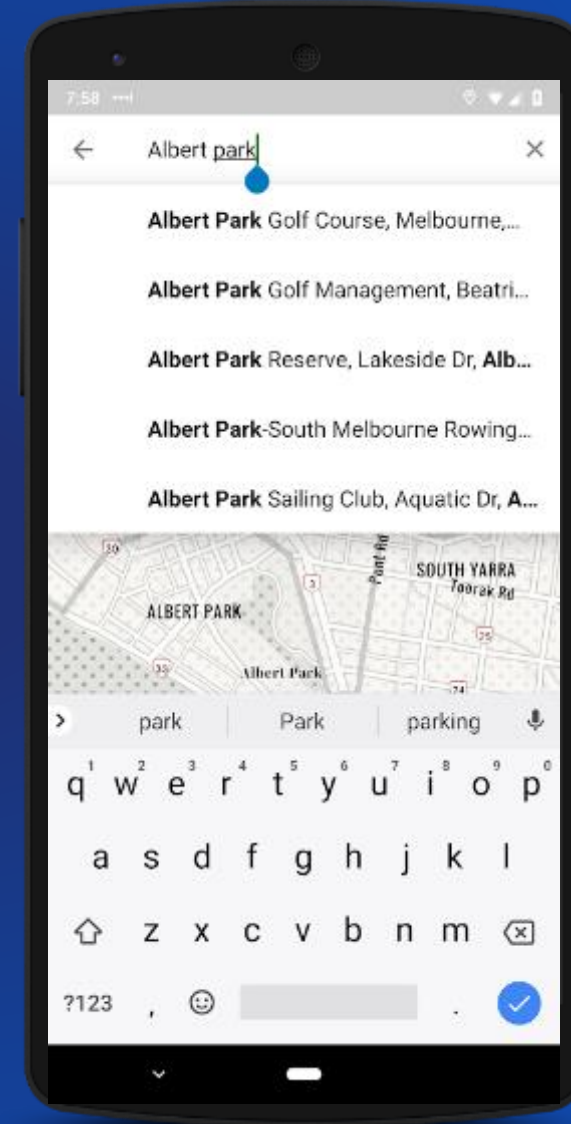


Feature overview

Explorer for ArcGIS

What else can it do?

1. Basemaps
2. Bookmarks
3. Search



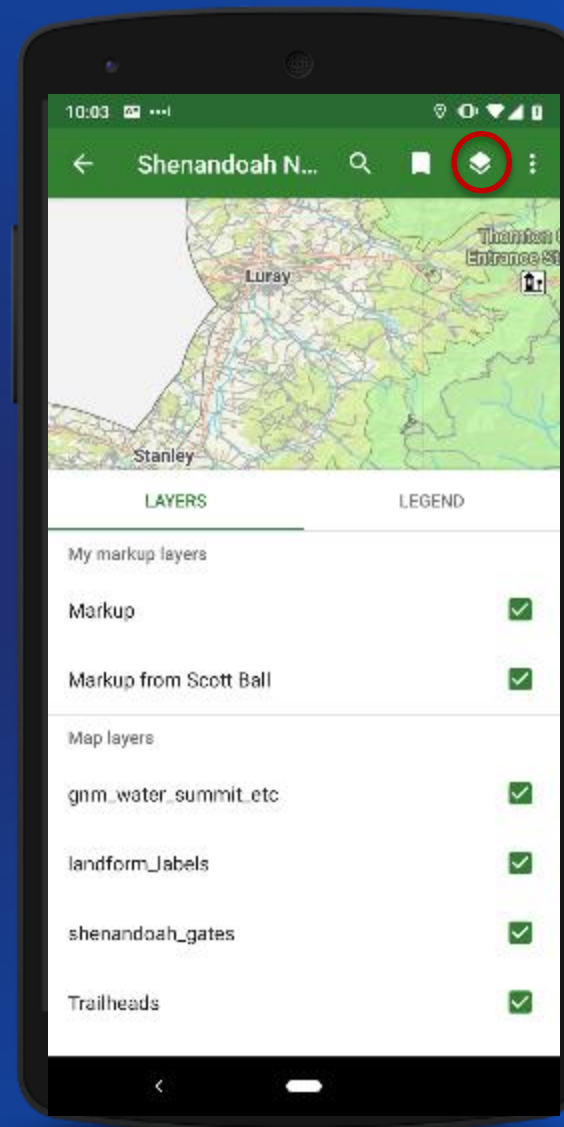


Feature overview

Explorer for ArcGIS

What else can it do?

1. Basemaps
2. Bookmarks
3. Search
4. Layers



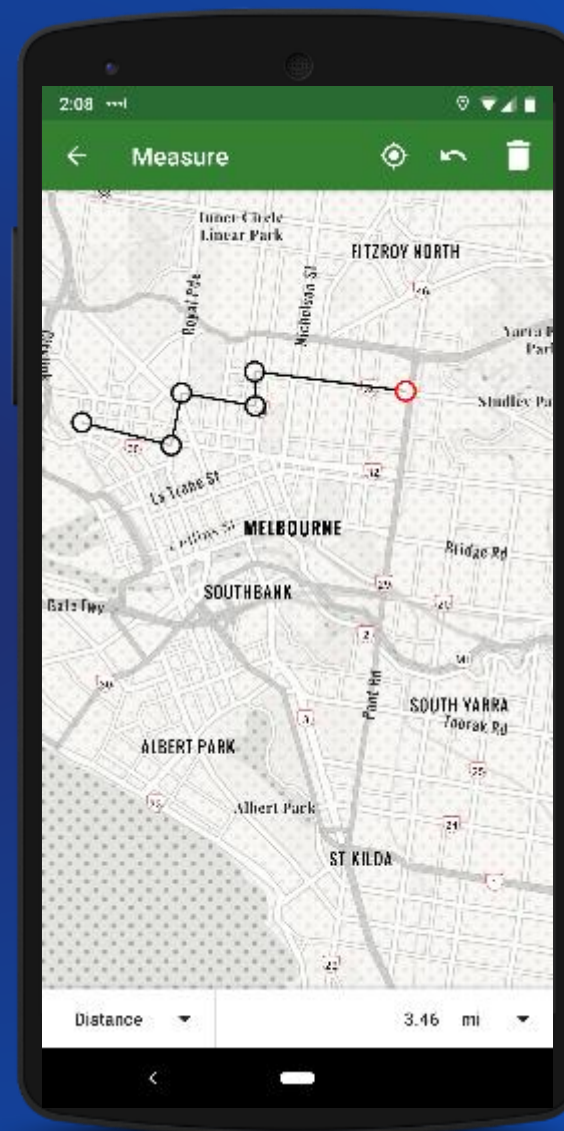


Feature overview

Explorer for ArcGIS

What else can it do?

1. Basemaps
2. Bookmarks
3. Search
4. Layers
5. Measure



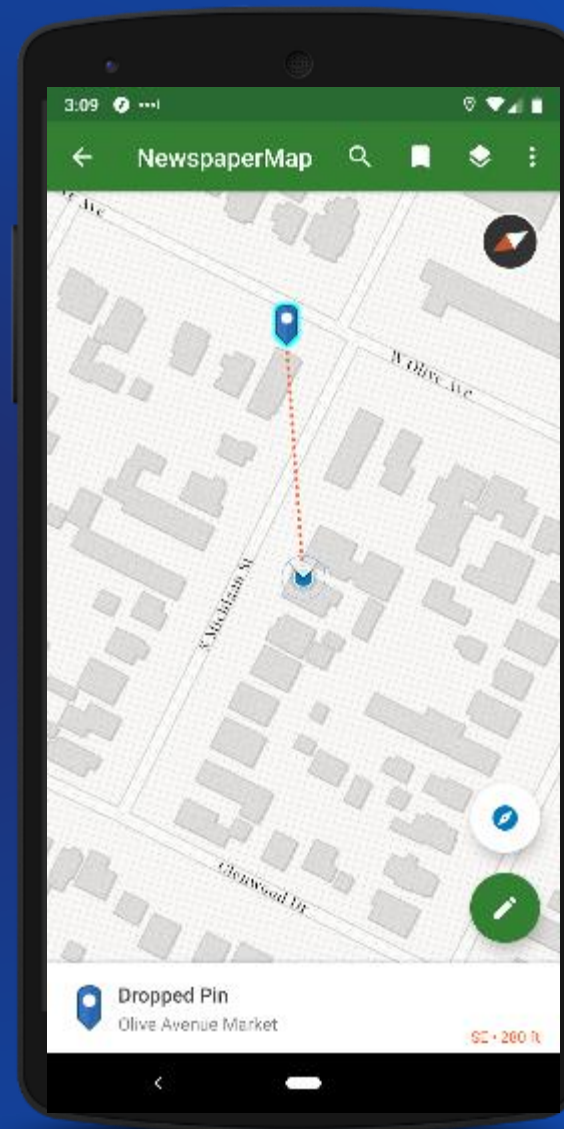


Feature overview

Explorer for ArcGIS

What else can it do?

1. Basemaps
2. Bookmarks
3. Search
4. Layers
5. Measure
6. Compass mode



Enhance workflows by pairing apps

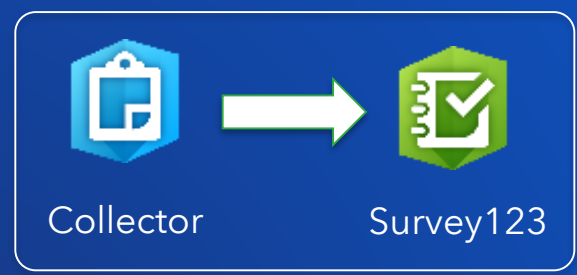
Collect and Monitor



Third Party Integrations



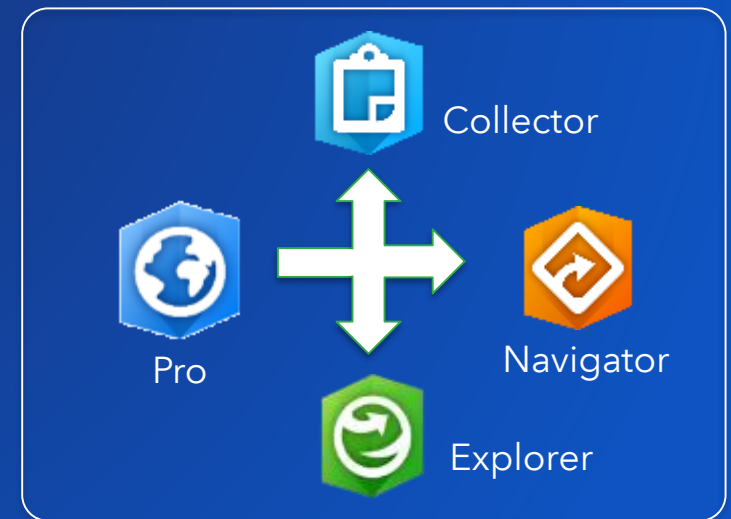
Workforce Launchpad



Forms + Maps



Prepare - Field





Integrate with Explorer

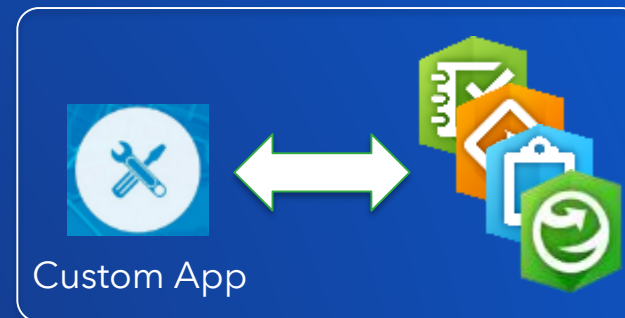
Explorer for ArcGIS

App scheme: `arcgis-explorer://`

(new) Web scheme: <https://explorer.arcgis.app>

- **itemID** - Web Map or MMAPK to open/download on launch
- **center** - center point of map - Lat/Lon, Address, Feature
- **wkid** - provide wkid for Lat/Lon in non-WGS84 spatial reference
- **scale** - scale to display the map at on launch
- **rotation** - custom map rotation
- **markup** - enable markup tool on launch
- **bookmark** - center map on bookmark instead of using center param
- **search** - quickly execute search for feature in map

Third Party Integrations





What's New

Explorer for ArcGIS



Windows 10 support

What's New in Explorer for ArcGIS



GET IT ON
Google Play



Download on the

*JUST SEARCH FOR "EXPLORER FOR ARCGIS"
IN THE MICROSOFT STORE*



Get it from
Micr



Try the beta now!





Layer refresh interval support

What's New in Explorer for ArcGIS



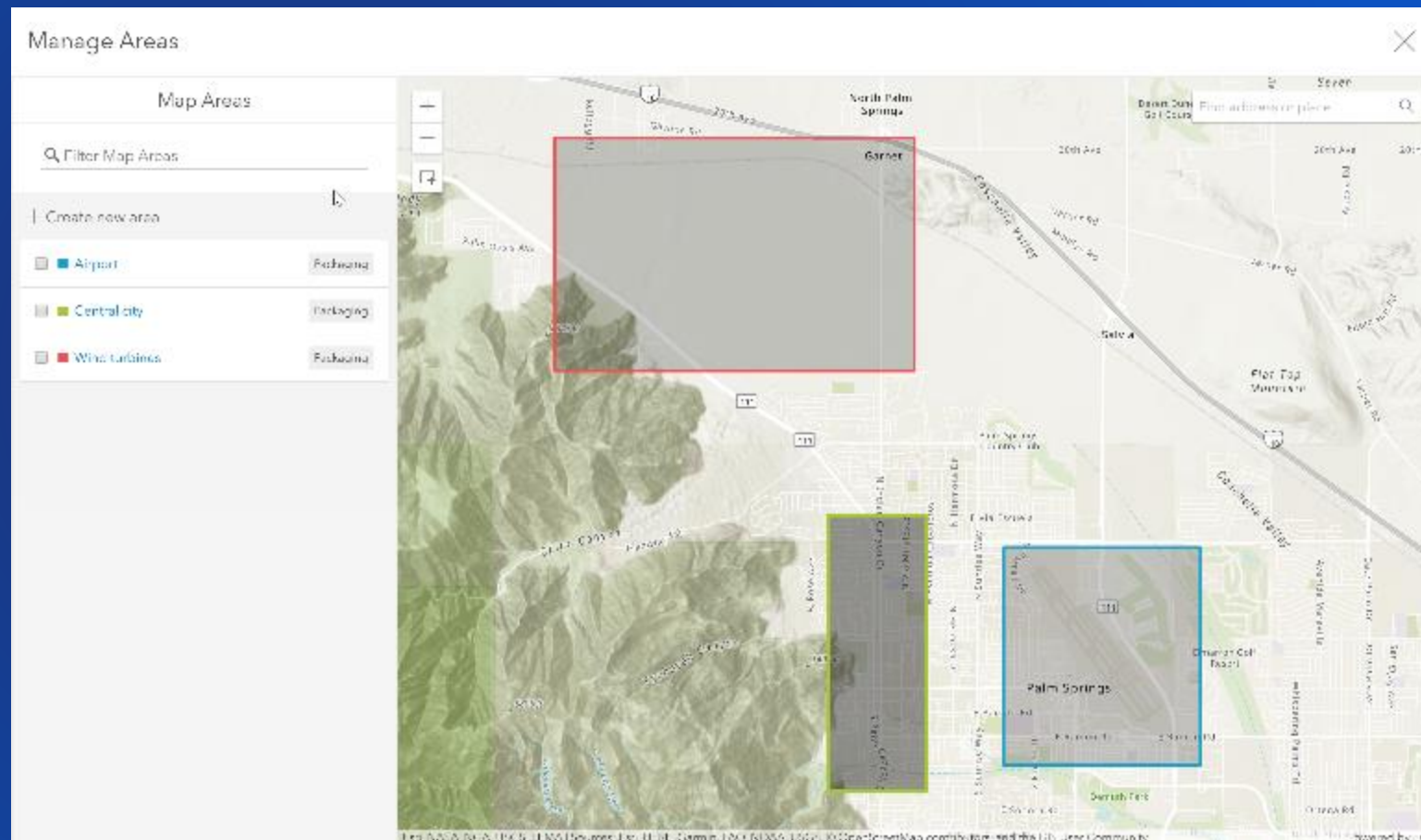


Offline improvements

What's New in Explorer for ArcGIS

Offline Areas

Areas are defined in the webmap by the author and loaded onto the device via Explorer





Functionally equivalent to what is in Collector today



Support for all User Types

What's New in Explorer for ArcGIS

All user types can use Explorer with ArcGIS Online or ArcGIS Enterprise



Viewer



Editor



Field Worker



Creator



GIS Professional

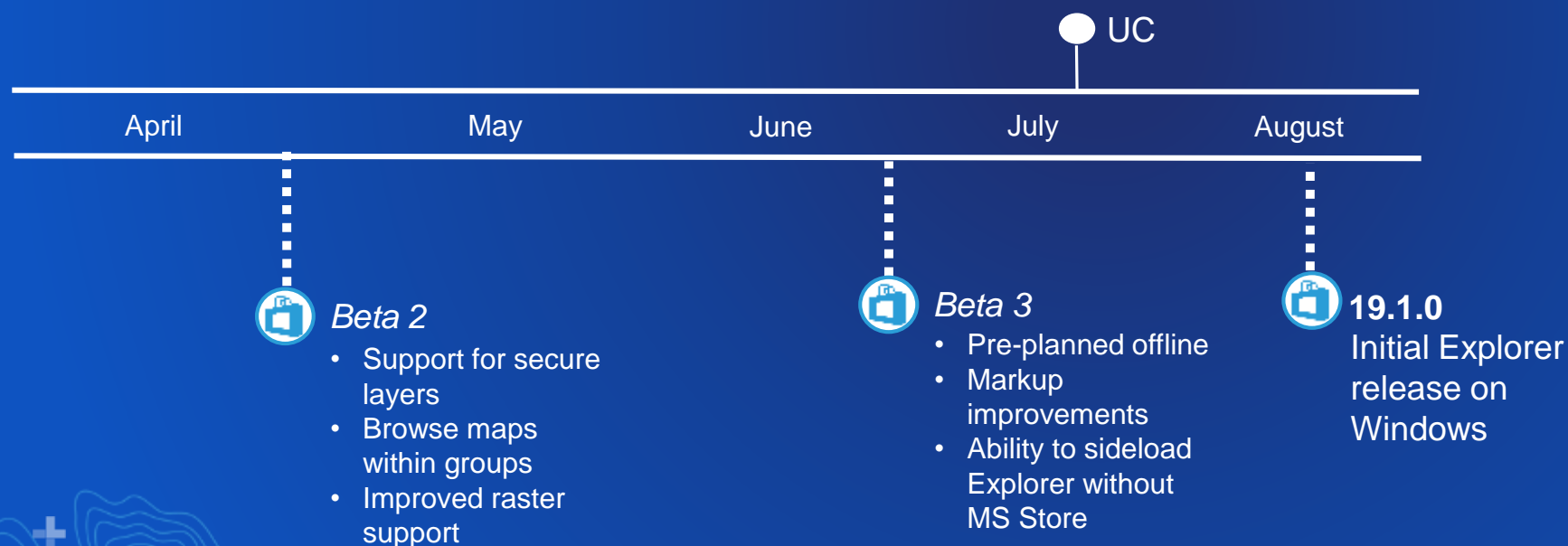


2019 Roadmap

Explorer for ArcGIS

Major Features of 19.1.0

- Windows 10 first release
- Pre-planned areas
- On-demand areas
- Layer refresh interval support



Try the Windows beta now!

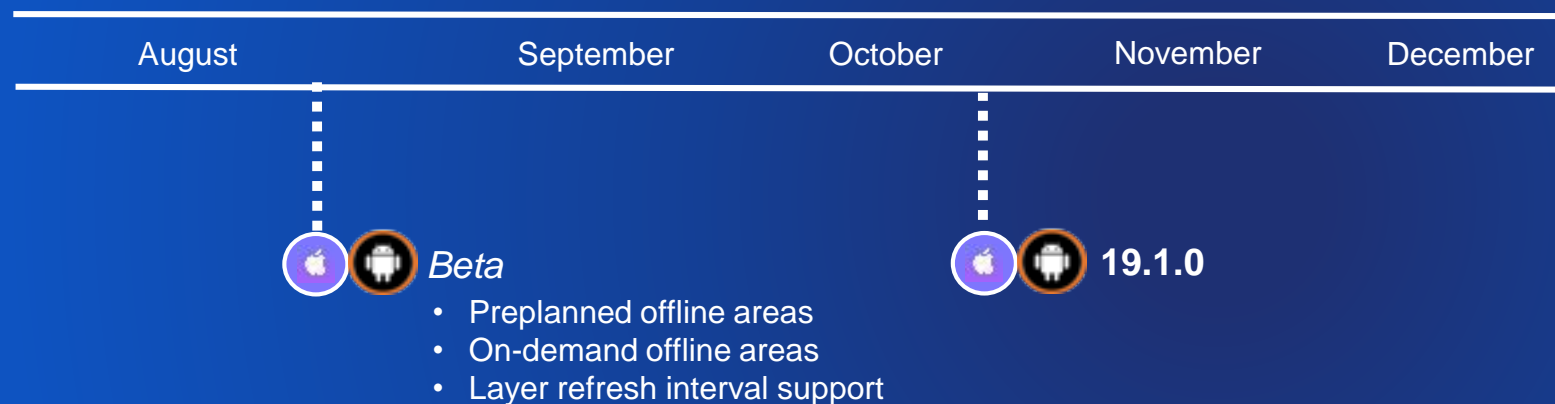


<https://community.esri.com/groups/explorer-beta>



Road ahead

Explorer for ArcGIS



What's next?

Keep improving offline workflows

- Map expiry
- Download optimizations

Tracker for ArcGIS integration

- View your location history on your map in Explorer

Field Operations suite improvements



Where can you learn more?

Explorer for ArcGIS

Documentation

<https://doc.arcgis.com/en/explorer/>

GeoNet Community

<https://community.esri.com/groups/explorer-for-arcgis>

Twitter

@ArcGISApps

Here at UC

Explorer for ArcGIS: Working with Offline Maps and Markup

Wednesday, 10-10:45, Demo Theater 9

Field Operations SIG

Wednesday, 11:30-12:30

SDCC Room 29B

Come say hi at the Field Operations area in the Expo!

Explorer for ArcGIS

Free Trial

Home Help FAQs

Maps at Your Fingertips

Access your maps everywhere you go using your mobile device.

Search Explorer for ArcGIS

Download on the App Store | GET IT ON Google Play | available on amazon appstore

What's new | Requirements | FAQs

Jump into fieldwork with Explorer!

Use Explorer to examine petroglyph sites in Imaginary National Park. Want to make the map? Creating a map to use in the app is just like creating any map for ArcGIS Online or ArcGIS Enterprise.

Markup: lightweight, shareable sketching on your map

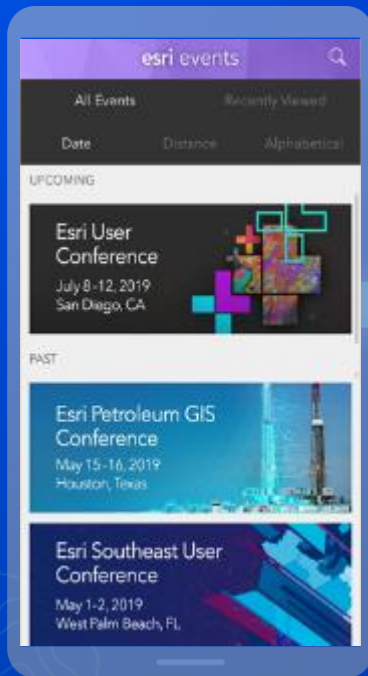
Draw on your map and share your notes with others. Use the same notes across multiple maps, and allow others to contribute to the markup.

No connection? No problem.

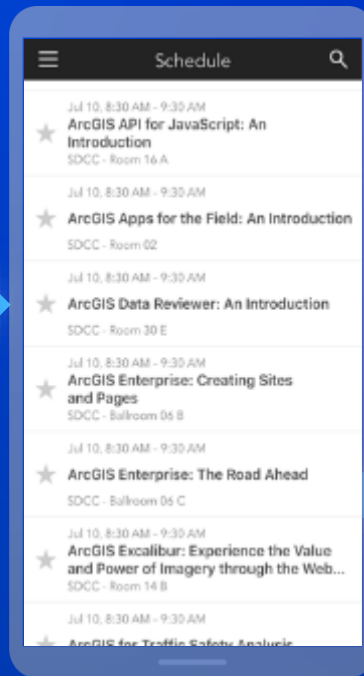
Fieldwork takes you places without a data connection. Create maps that can be taken offline so your users can keep working.

Please Share Your Feedback in the App

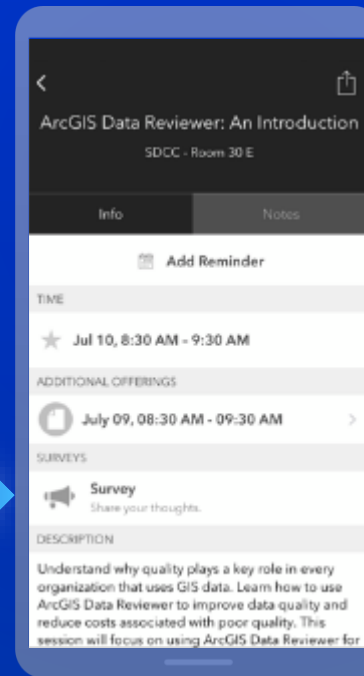
Download the Esri Events app and find your event



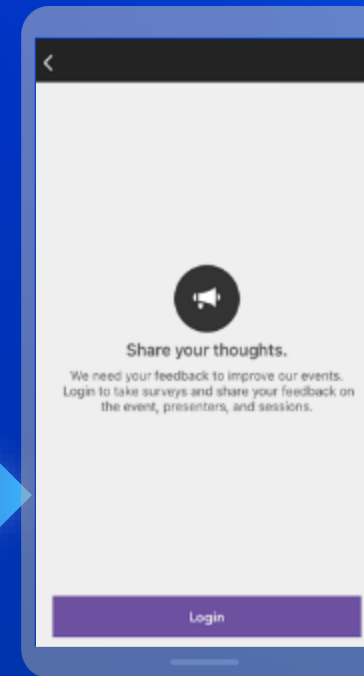
Select the session you attended



Scroll down to "Survey"



Log in to access the survey



Complete the survey and select "Submit"

