

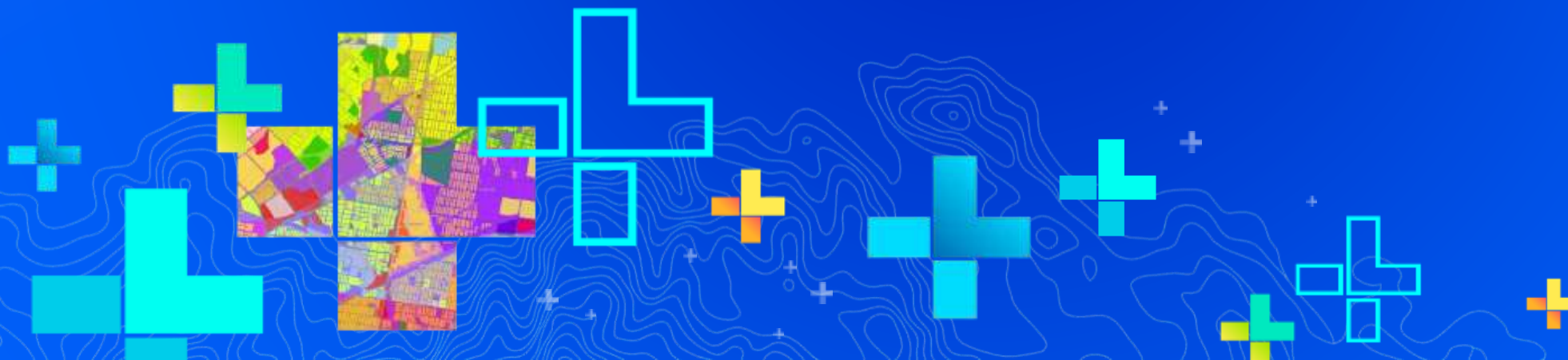
The Esri+ logo, featuring the word "esri" in a lowercase sans-serif font followed by a stylized plus sign.The LIVE logo, consisting of the letters "LIVE" in a large, bold, white, stylized font with a 3D effect.

USER CONFERENCE



Engaging the Public with Citizen Problem Reporter

Scott Oppmann



SEE
WHAT
OTHERS
CAN'T



ArcGIS Solution Templates

State and Local Government

- Collection of useful maps and apps

Configurable and extensible

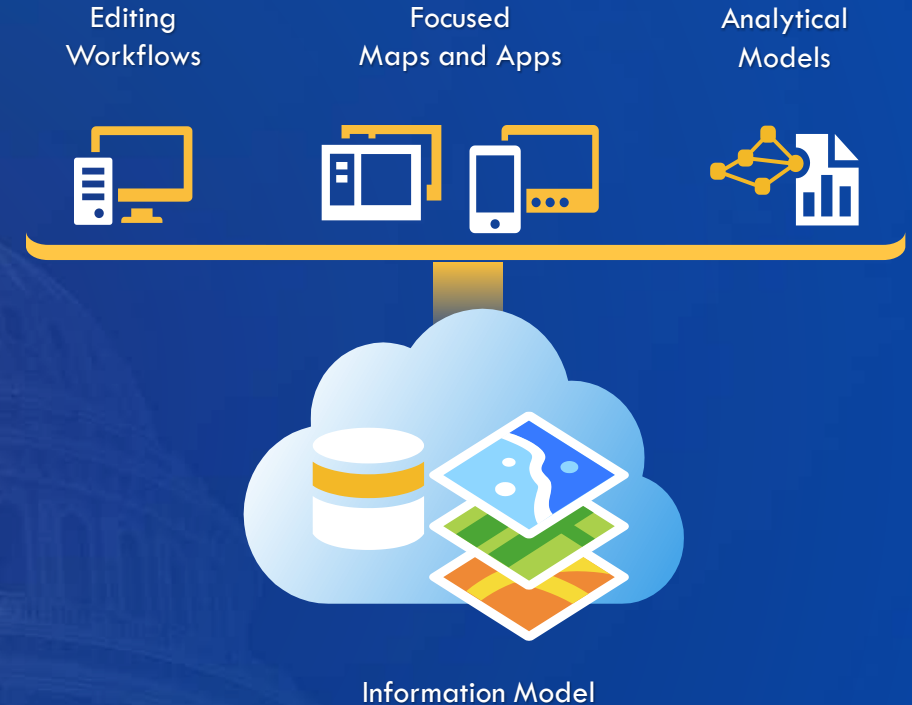
Freely available and fully supported

- Community of users

Best Practices / Implementation Support

- Network of Esri Services and Partner offerings

Help users implement, sustain and enhance

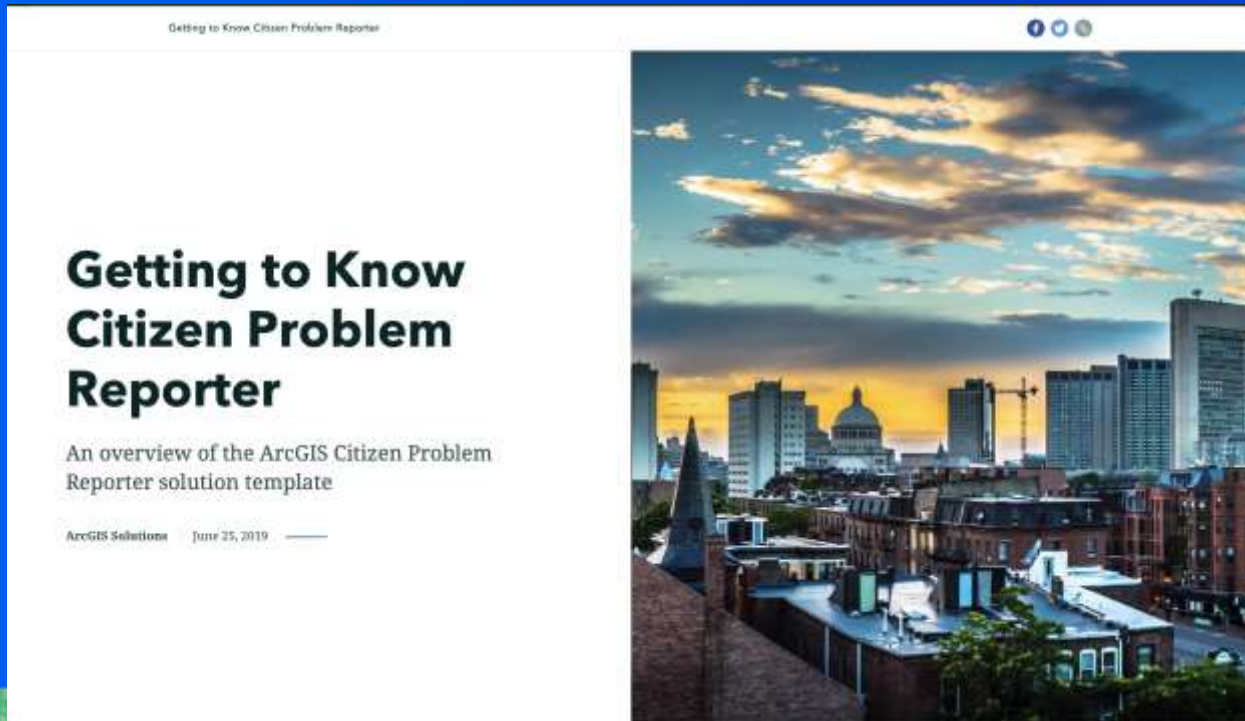


...Improving government operations and enhancing services provided to the public

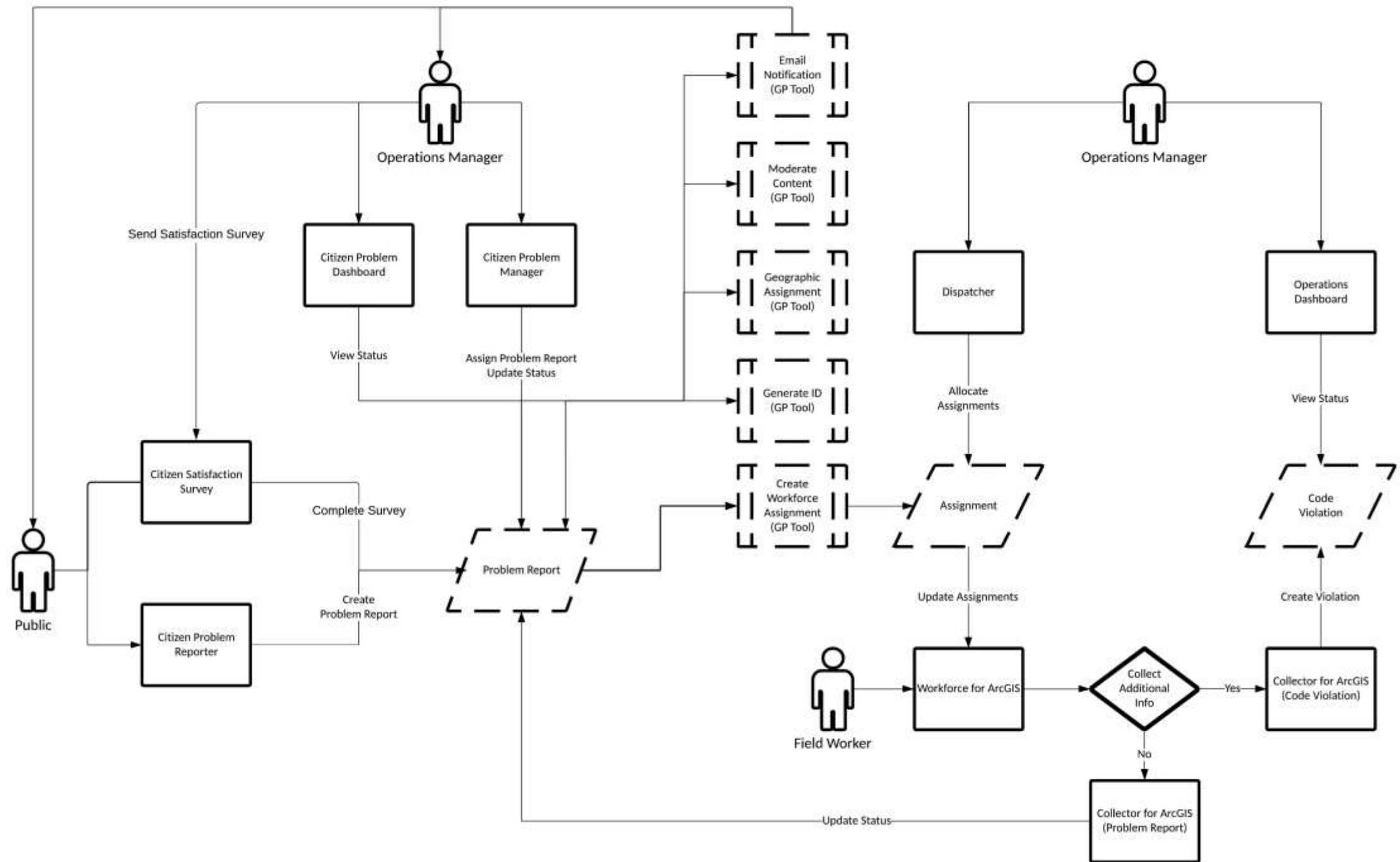
Mission

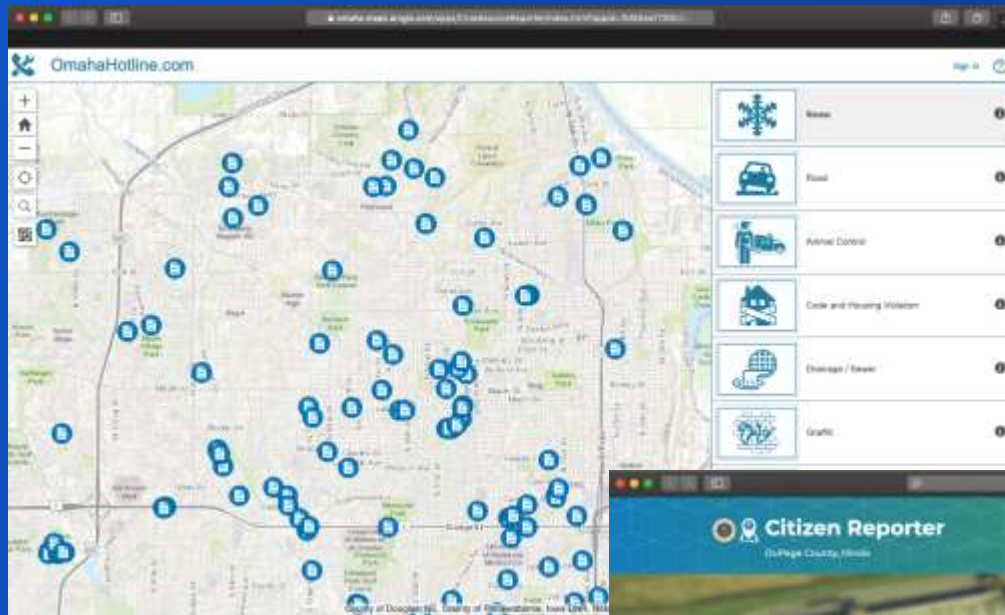
- Deliver maps and applications quickly throughout their organization
 - Roadmap for standard capabilities, improve service delivery, expand reach, innovation....
- Stay current with future releases / avoid legacy technology
 - Save time and money, leverage new ArcGIS offerings, focus on complex or unique problems....
- Unlock geospatial platform so it can be leveraged by many
 - Mitigate many organizational challenges, maximize technical expertise....
- Leverage the collective knowledge of the entire community
 - Best practices, industry tradecraft....



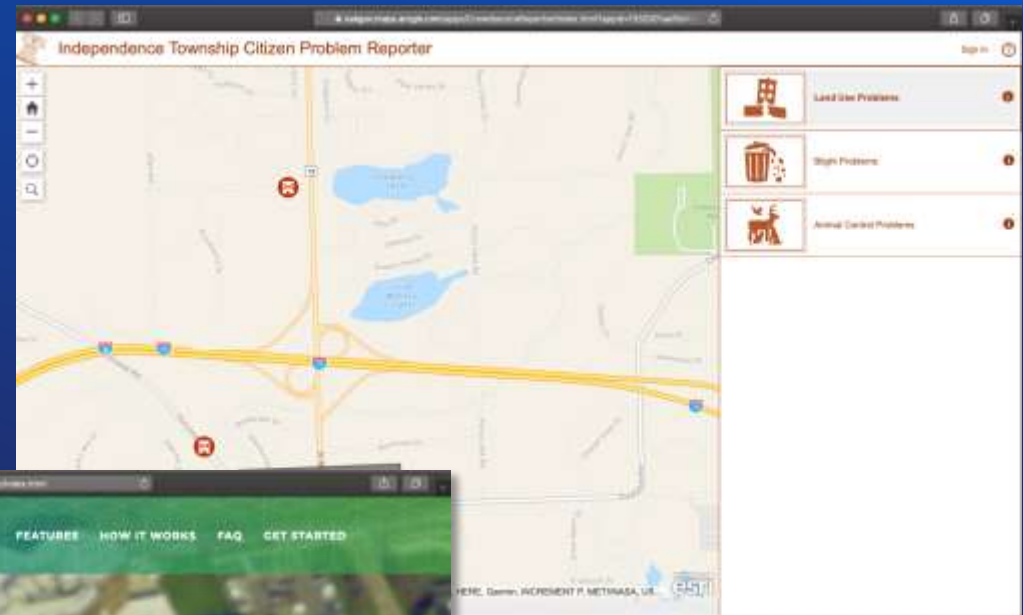


Show Me!





Omaha, NE



Independence Township, MI



Dupage County, IL

Road Ahead

- ArcGIS Hub Initiative
 - Community identities
 - Richer capabilities
- Insights for ArcGIS Workbook



Thank you

Be innovative, aware, and know you are not alone

Scott Oppmann, Team Lead
State and Local Government Solutions

 <http://solutions.arcgis.com/>

 <http://meetup.com/ArcGIS-for-Local-Government/>

<http://meetup.com/ArcGIS-for-State-Government/>

 @ArcGISLocalGov

@ArcGISStateGov

 <http://esri.github.com>

esri+



USER CONFERENCE