



United States Department of Agriculture

# Human-caused Fires WebGIS Application for Community Education & Resiliency

AMY M. MATHIE, USDA Forest Service  
Pacific Northwest Region  
Data Resources Management



Forest Service

# Supporting fire education & prevention



Pacific Northwest (PNW) Wildfire Coordination Group helps build wildland fire resiliency among Fire Adapted Communities (FACs) through annual community visits by federal interagency Fire Prevention & Education Teams (FPETs)

FACs are located in a wildfire prone areas and actively prepare for the eventuality of wildland fire.

FACs approach wildland fire preparation by integrating people, structures, businesses, infrastructure, and cultural resources with the natural area.



# Data source & development history



- National fire incident dataset created (& annually updated) using wildfire records of federal, state, and local fire organizations' reporting systems.

Spatial wildfire occurrence data for the United States is available at:

<https://www.fs.usda.gov/rds/archive/Product/RDS-2013-0009.4/>

(or use <https://tinyurl.com/firedata> )

- Supports the national interagency Fire Program Analysis (FPA) system
- The data used by PNW FPETs subset of the national dataset for Oregon and Washington.





## The initial request...



*Create lots of paper maps with a LOT of information on them...  
for a lot of areas  
some we know now  
some we'll know later*

*Some data we must  
have, but there are  
**SO MANY** data points  
that we'll have  
to figure out how  
much can fit on map.*

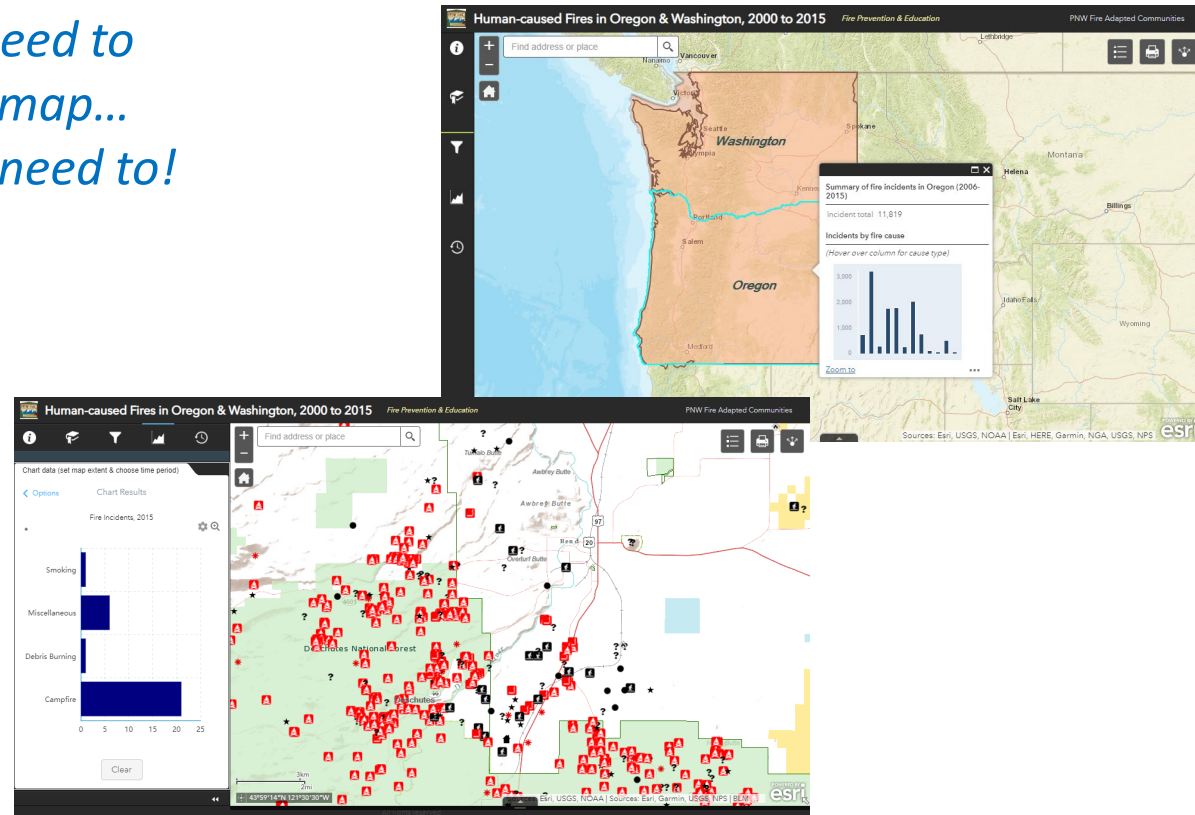


# Thinking beyond the paper map...



What if... a web-GIS application is designed that that offers FPETs and fire support staff flexibility and data consistency?

*Still need to  
print map...  
if we need to!*





# Technical Demonstration

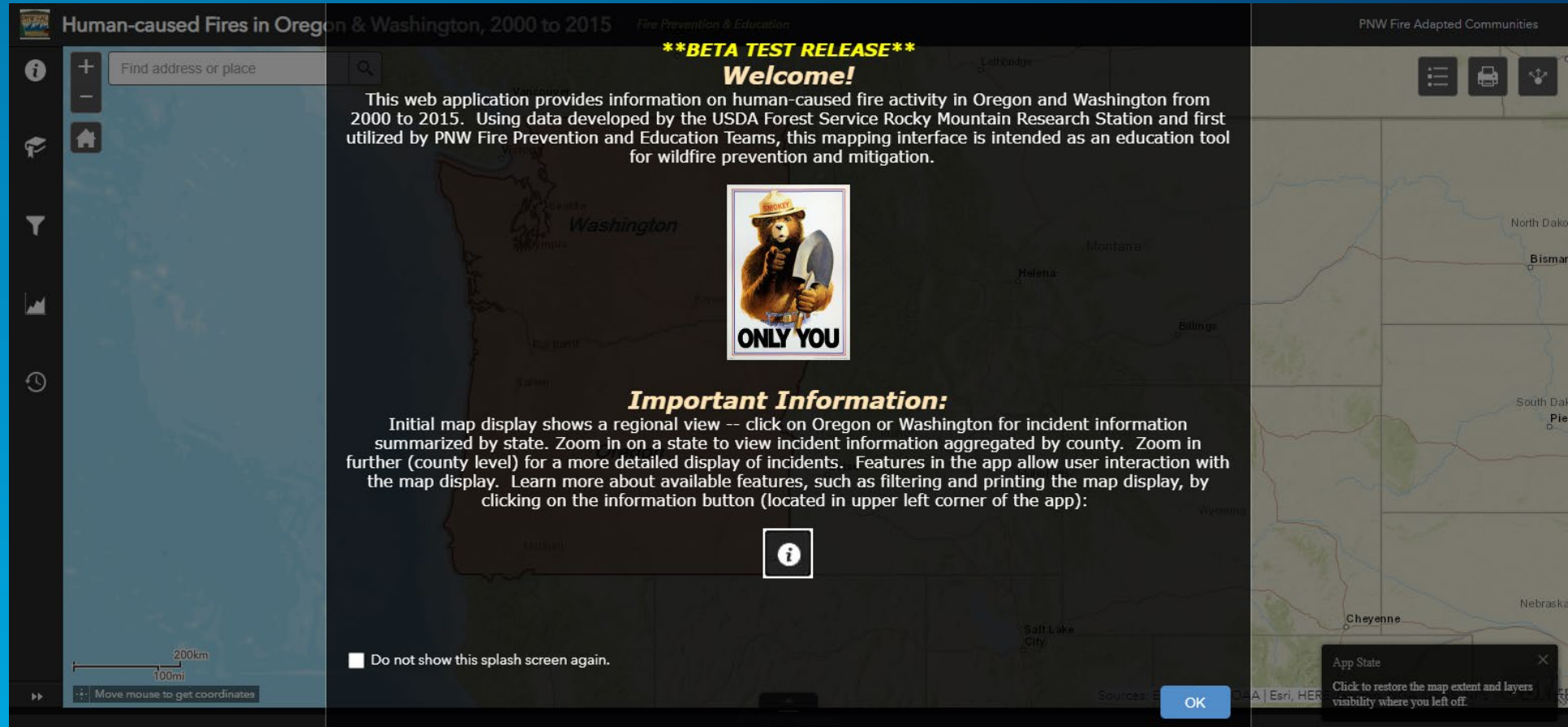
Application available for view at:

<https://tinyurl.com/FPETapp>





The Welcome Splash Screen states application's purpose, and where to find information on "How To Use" app



Information Button includes more details on app development, source data, and how to interact with application features

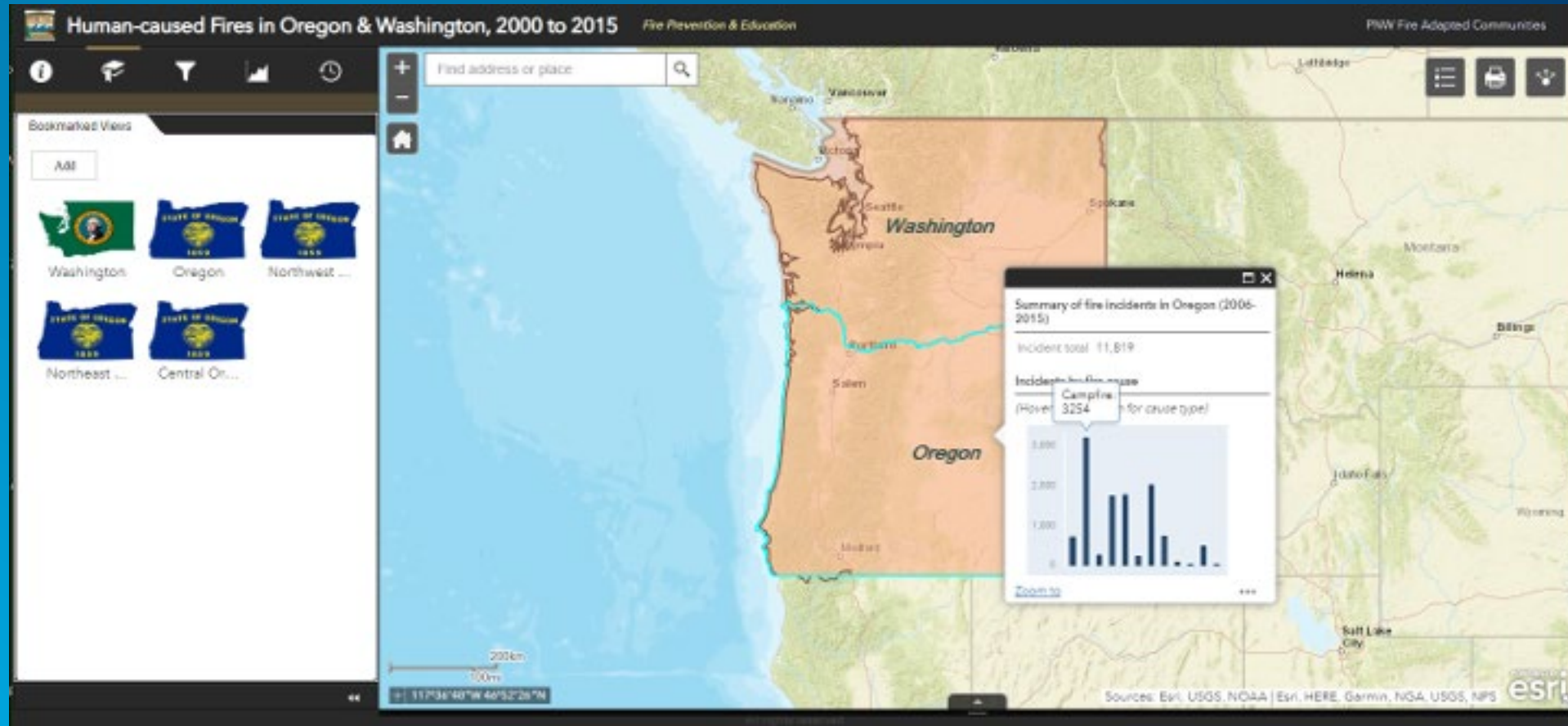




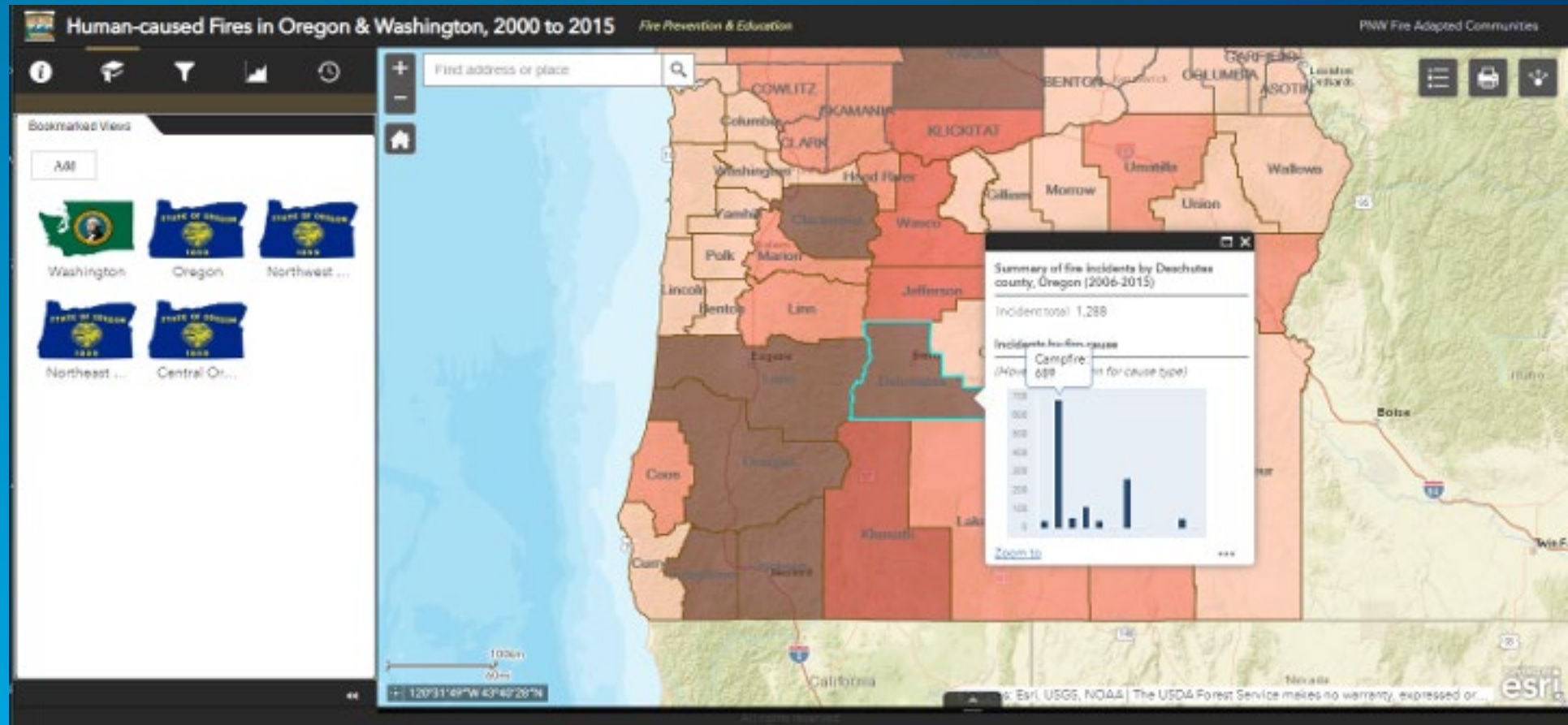
Bookmarks can be preset for team use ahead of time



Looking at a state-level scale, pop up shows chart of human-caused fire incidents for selected state

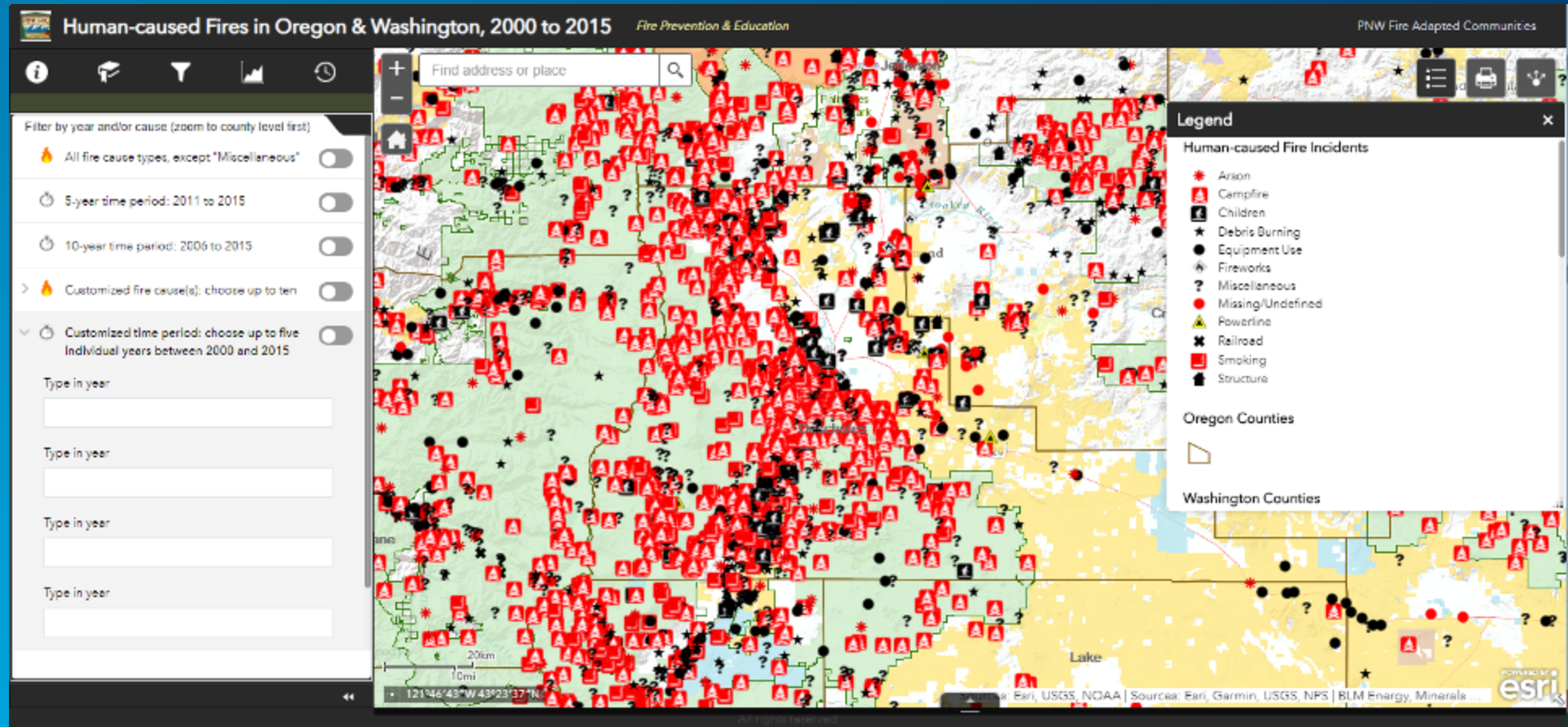


Looking within the state, counties are symbolized by total fire incidents  
Pop up shows chart of human-caused fire incidents for selected county



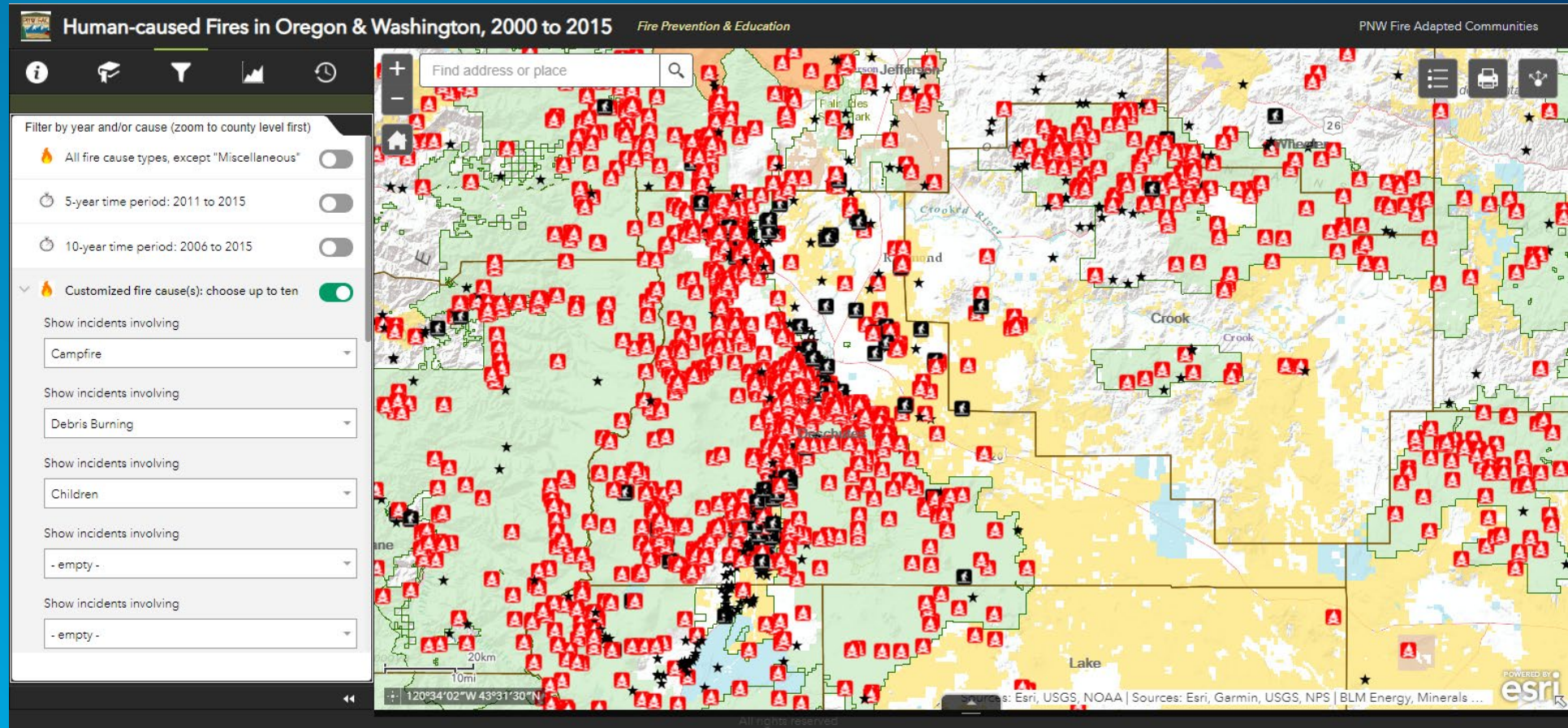


A wealth of data!... but without filtering it is overwhelming to make sense of



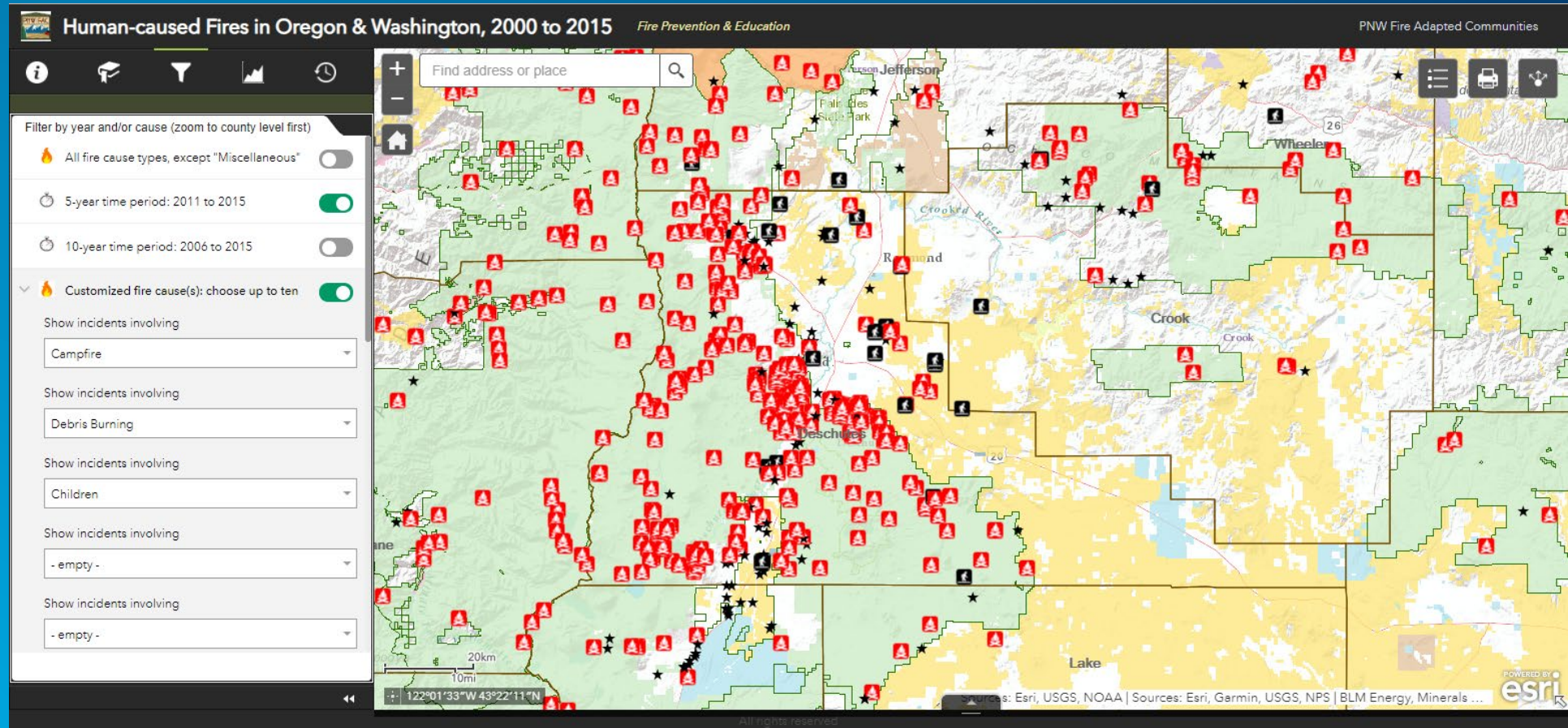


## Ability to filter by top three cause types for area of interest



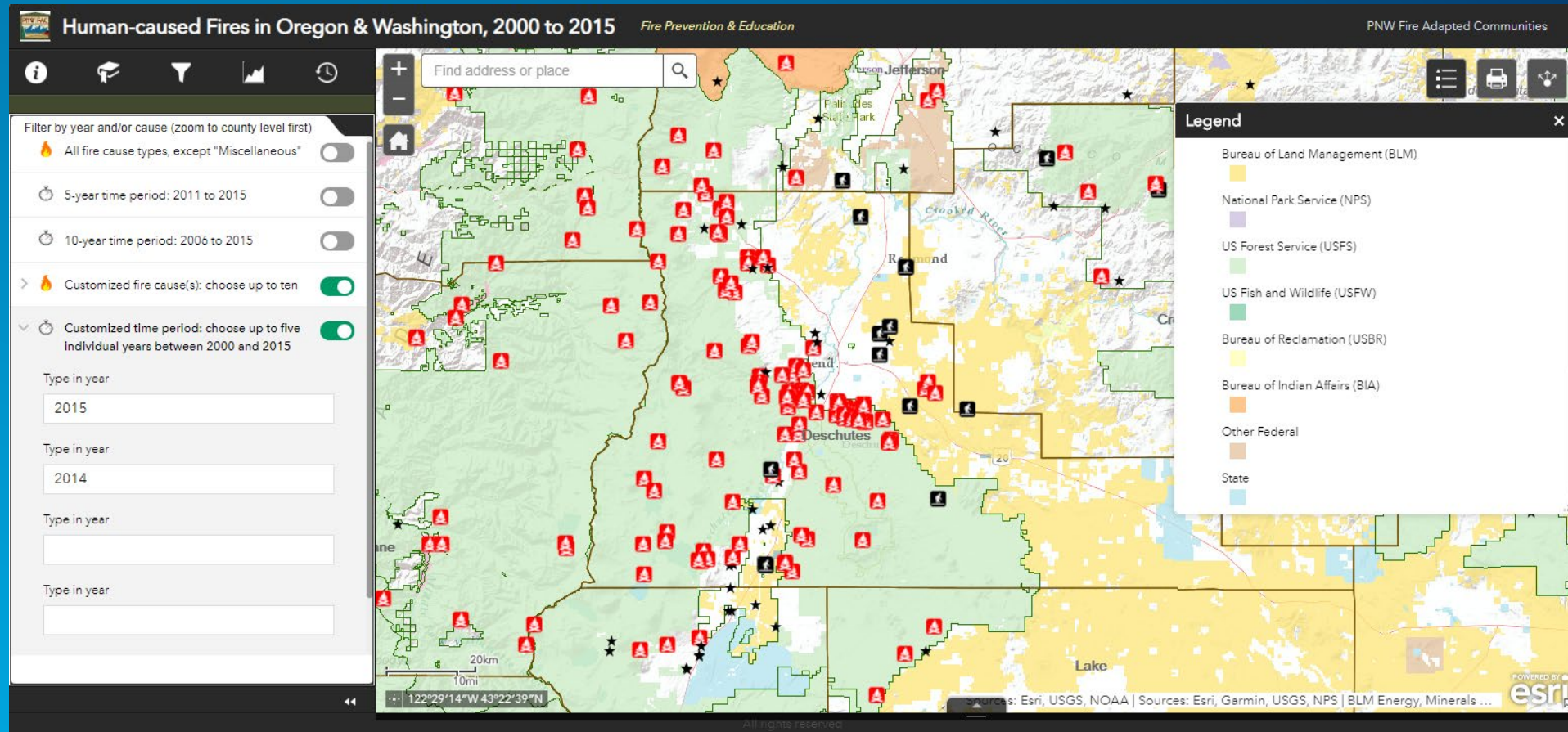


Ability to add filter for time period of interest (5-year span)

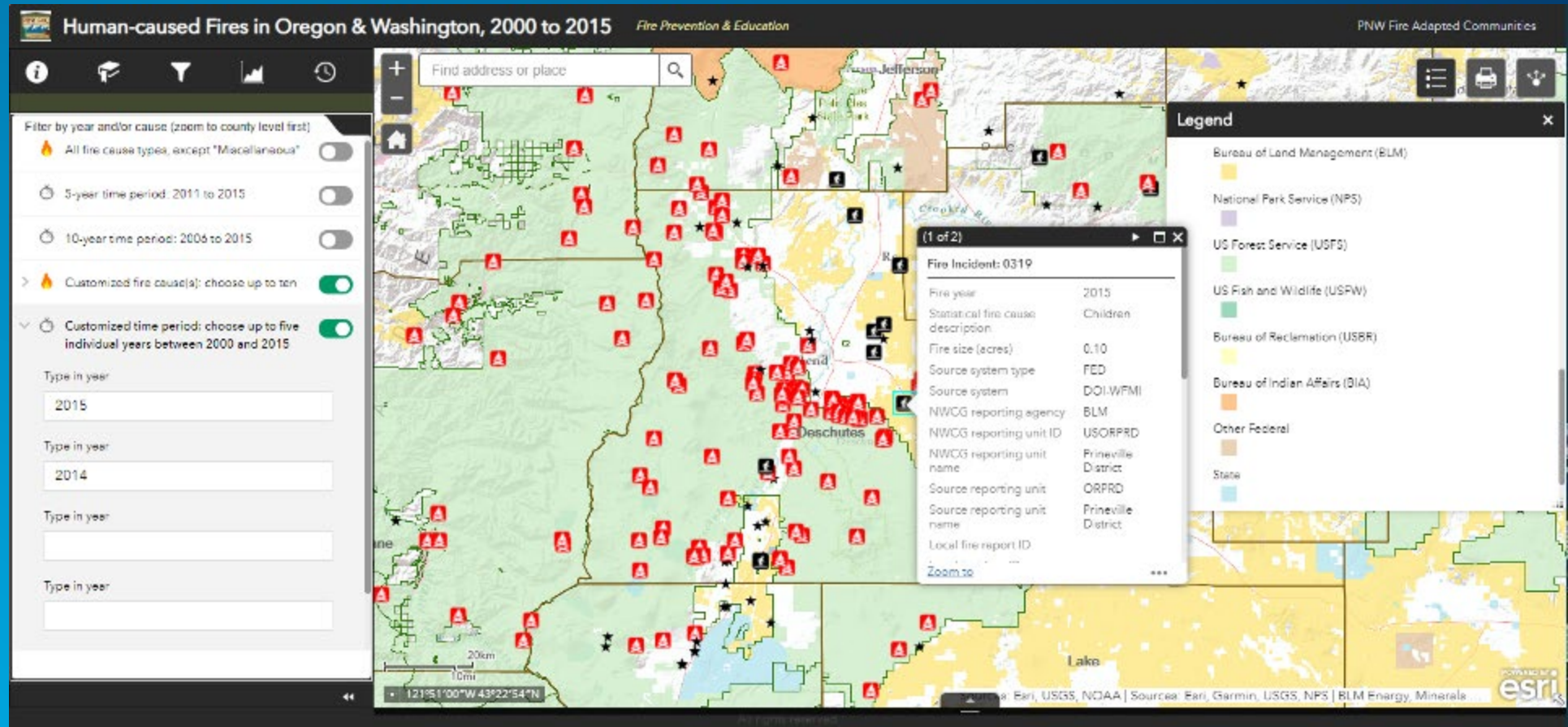




Ability to customize time period of interest (i.e., 2014 & 2015)

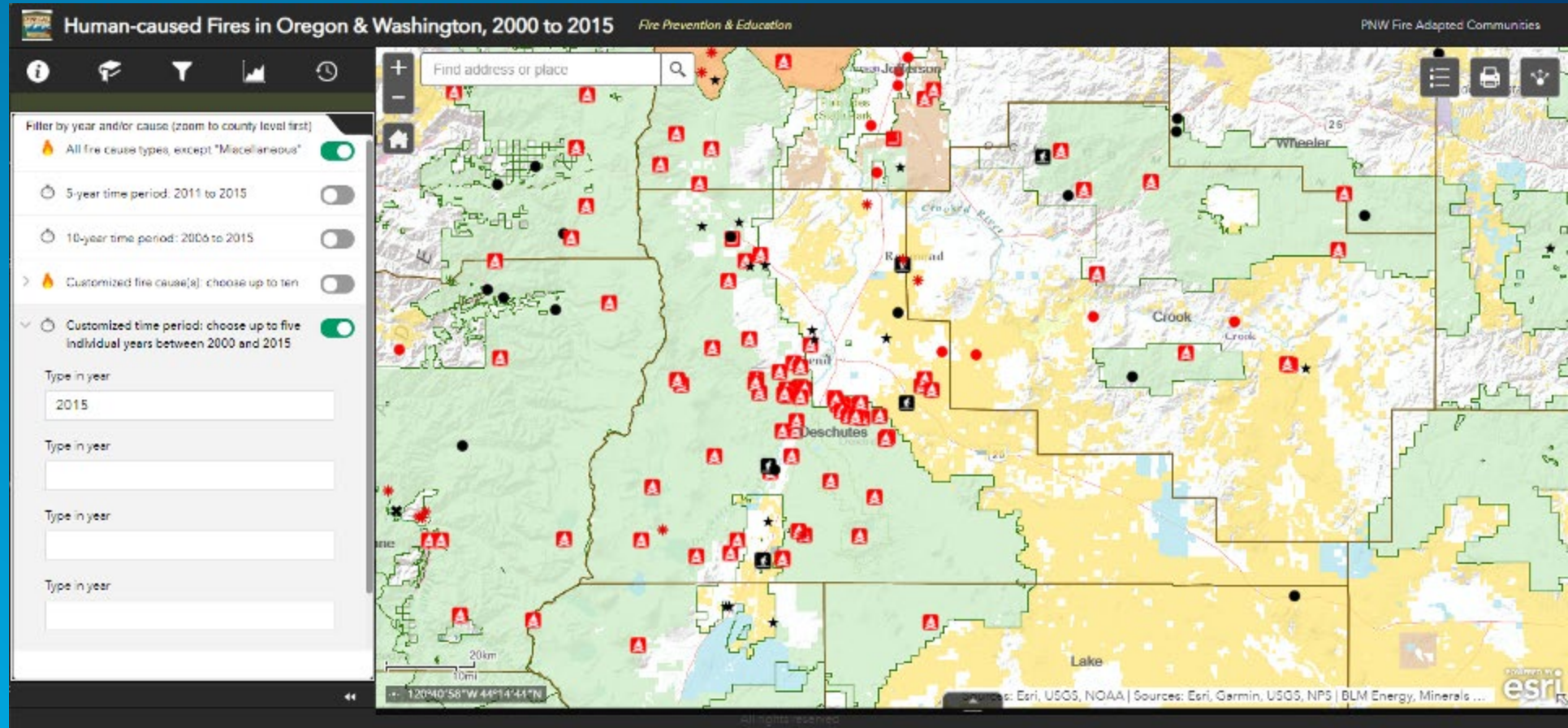


## Ability to assess spatial distribution on different public lands



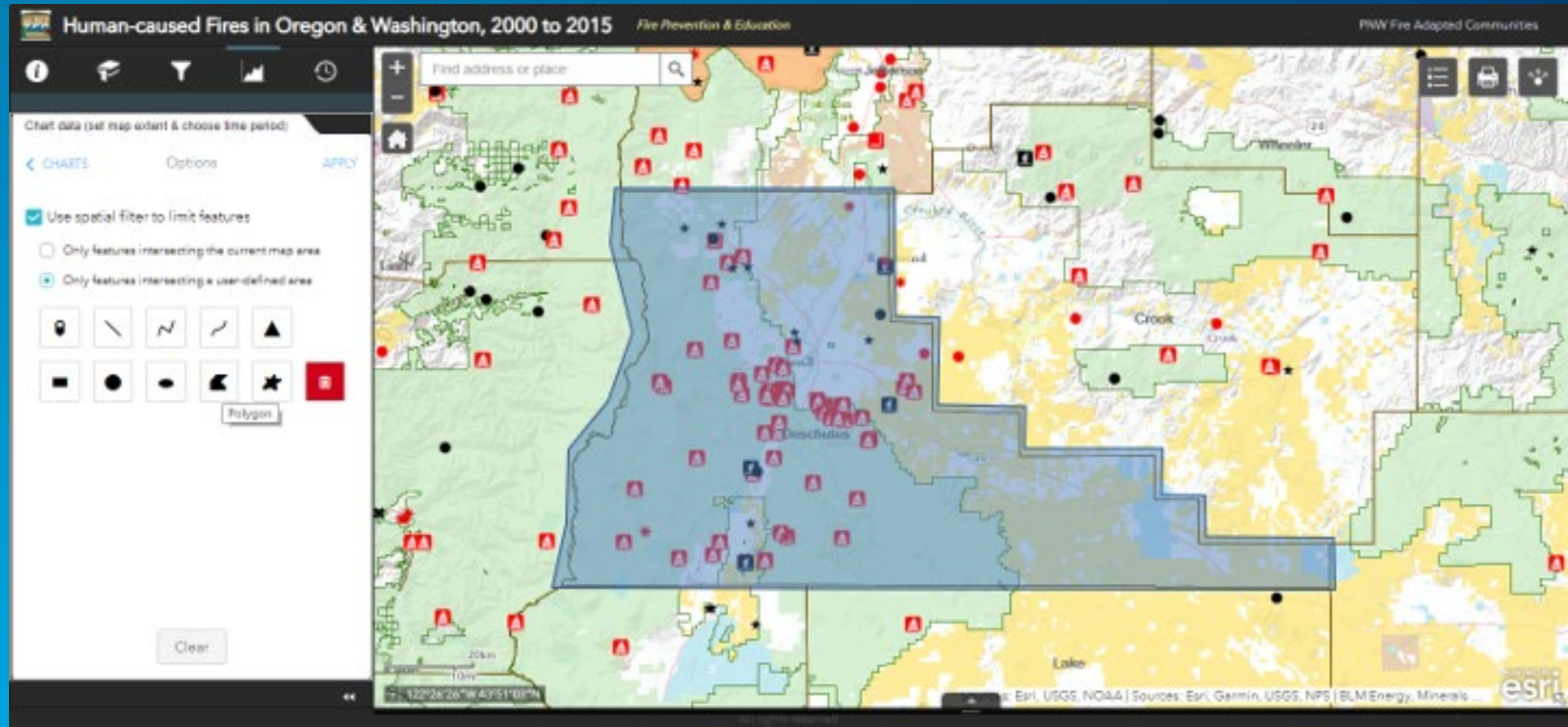


## View of all data for 2015, with exception of Miscellaneous

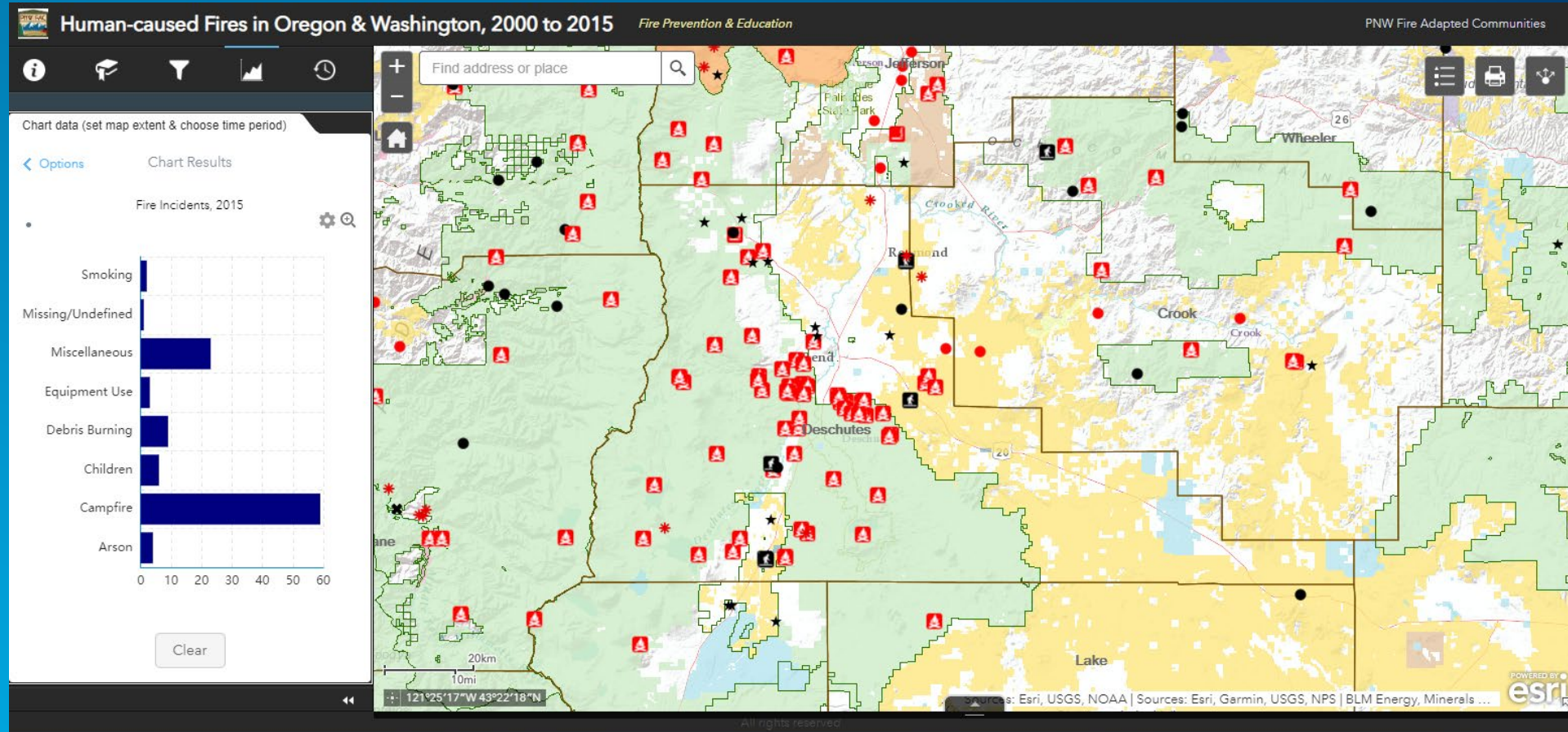




Ability to establish areas of interest for charting statistics

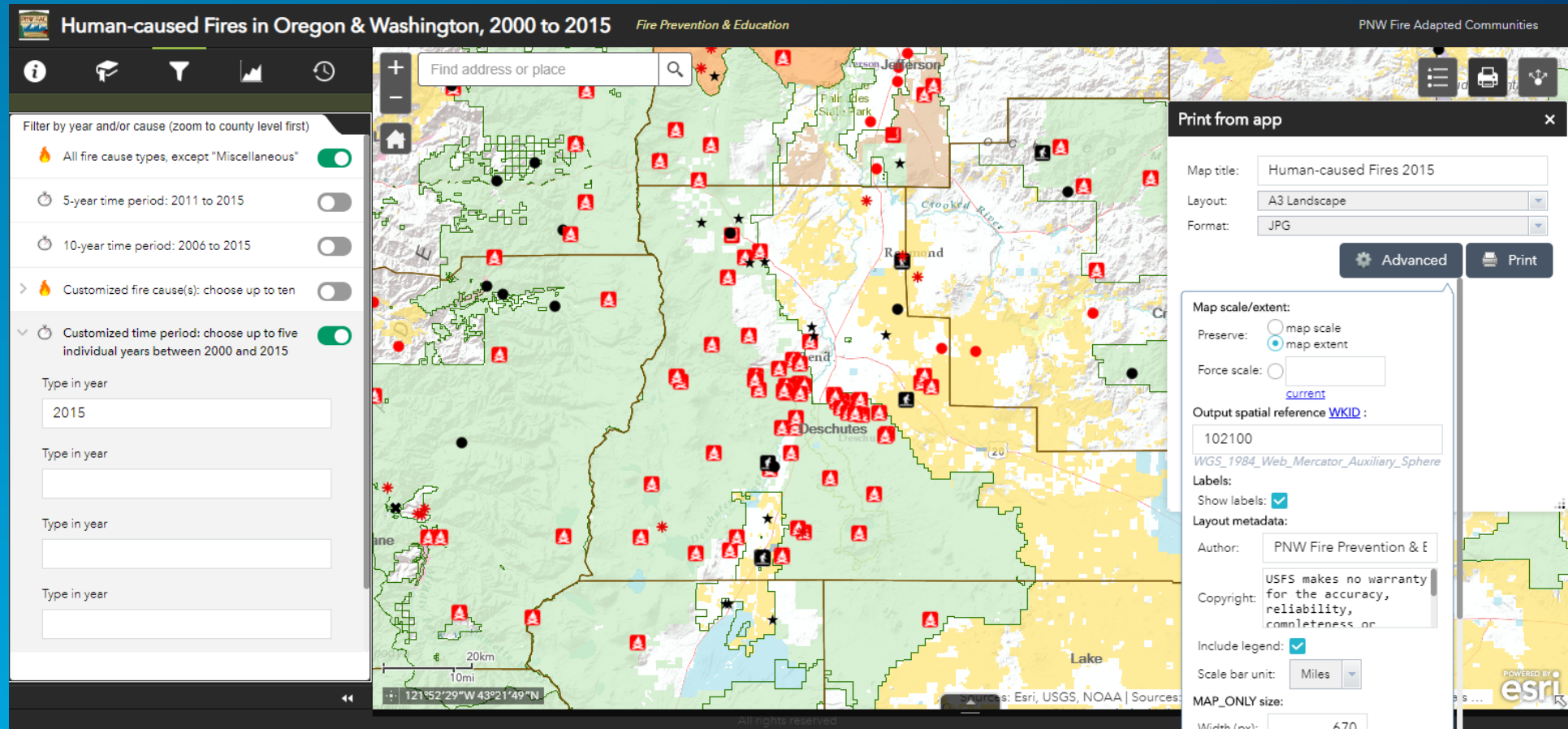


## Chart statistics for areas of interest on the fly



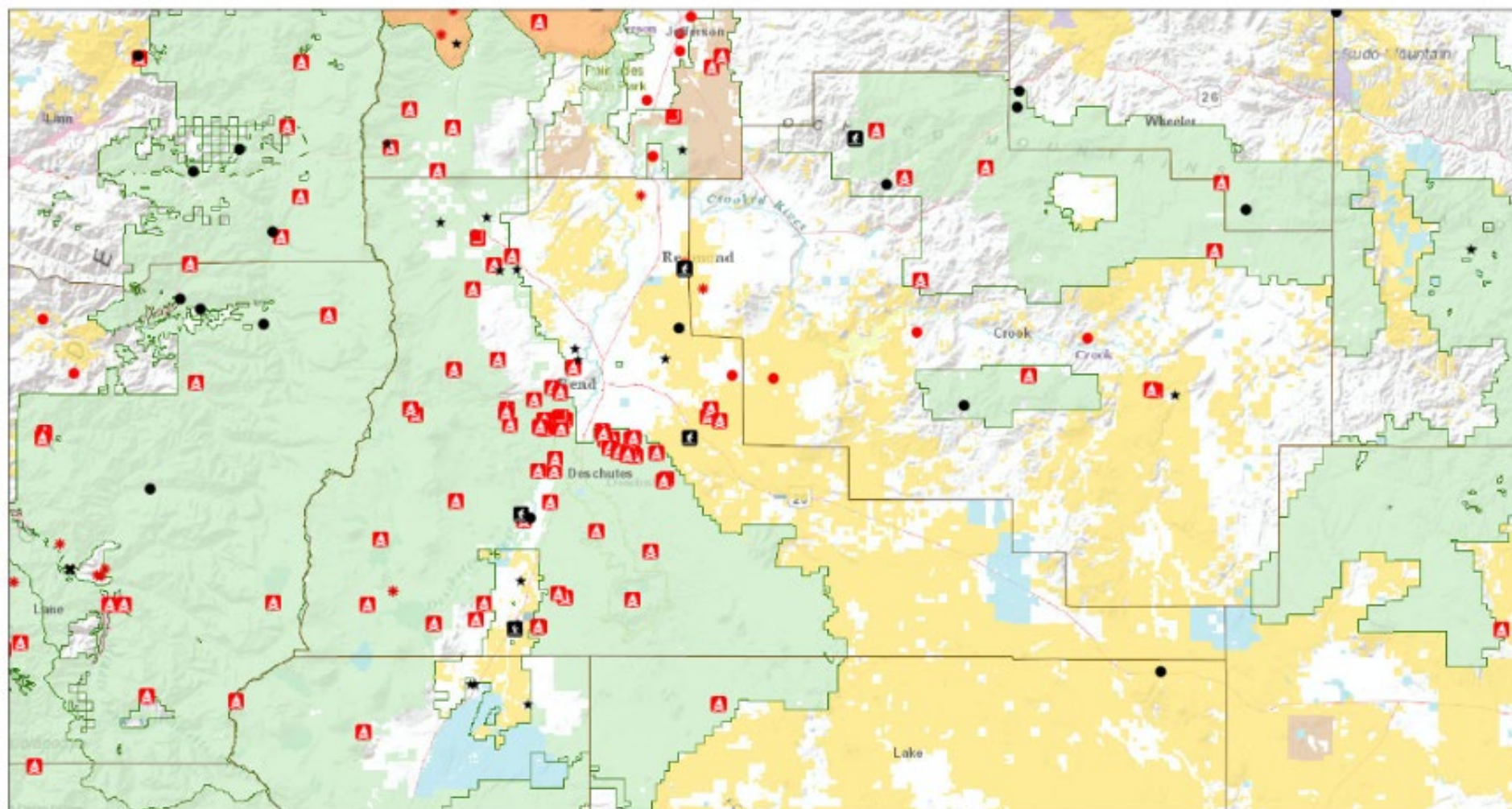


## Ability to create customized maps in field





# Human-caused Fires 2015



6/12/2019, 12:10:48 PM

Surface Management Agency

Alaska Native Allotment

Alaska Native Lands (Patented or Interim Conveyed)

Department Of Defense (DOD)

Bureau of Land Management (BLM)

National Park Service (NPS)

US Forest Service (USFS)

US Fish and Wildlife (USFW)

Bureau of Reclamation (USBR)

Bureau of Indian Affairs (BIA)

Other Federal

State

Local

Alaska Native Allotment

Alaska Native Lands (Patented or Interim Conveyed)

Department Of Defense (DOD)

Bureau of Land Management (BLM)

National Park Service (NPS)

US Forest Service (USFS)

US Fish and Wildlife (USFW)

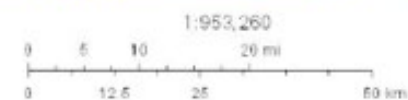
Bureau of Reclamation (USBR)

Bureau of Indian Affairs (BIA)

Other Federal

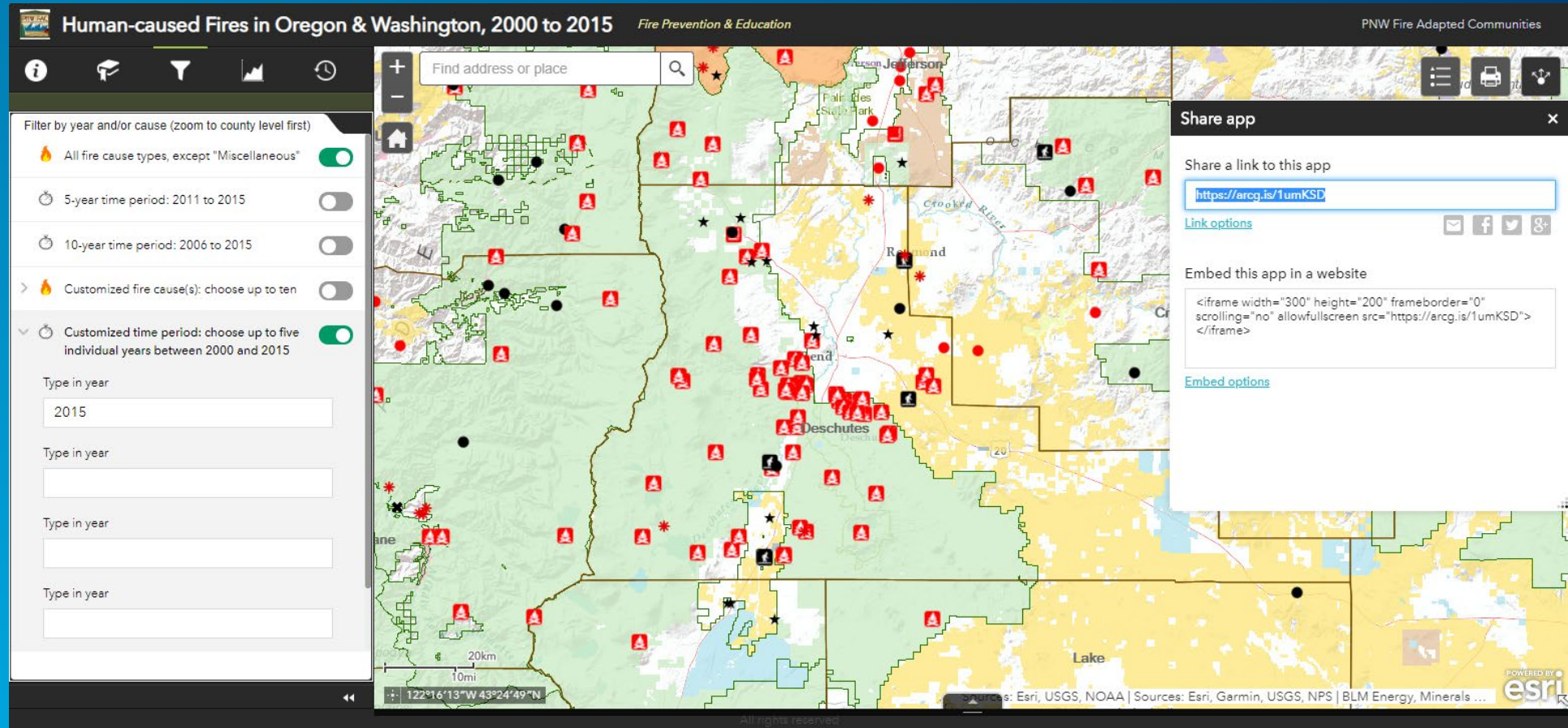
State

Local



Sources: Esri, HERE, Garmin, USGS, Intermap, INCREMENT P, NRCan, Esri Japan, METI, Esri China (Hong Kong), Esri Korea, Esri (Thailand), NGCC, © OpenStreetMap contributors, and the GIS User Community, BLM Energy, Minerals & Realty Management

## Ability to share customized views of app





## Next Steps...



- Interest in a nationwide app or “sister apps” for each Forest Service administrative region

### Considerations:

- Wealth of data from full dataset could cause issues in app (i.e., widgets functioning properly and timely)
  - Who will manage long term
- Need for some additional field testing of existing app, and design adjustments
  - Will be adding in newer data years recently made available





# Questions?



*Contact information:*

Amy Mathie

USFS Pacific Northwest Region

Data Resources Management

[amy.mathie@usda.gov](mailto:amy.mathie@usda.gov)

503-808-2986

