



**Information Services**

## **Leaving Paper Behind:**

A completely digital homeless Point in Time Count with Survey123 for ArcGIS

Lindsay King and Natalie Campos  
GIS Business Systems Analysts  
July 10, 2019

# Annual Homeless Point in Time Count

Page 2

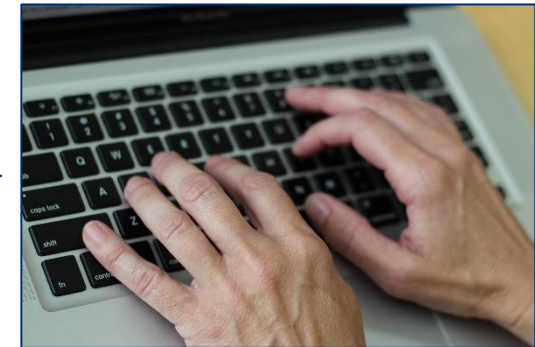
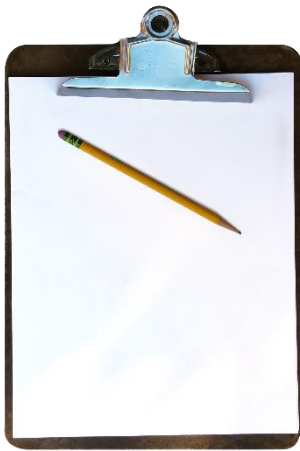


Information Services

[www.SBCounty.gov](http://www.SBCounty.gov)

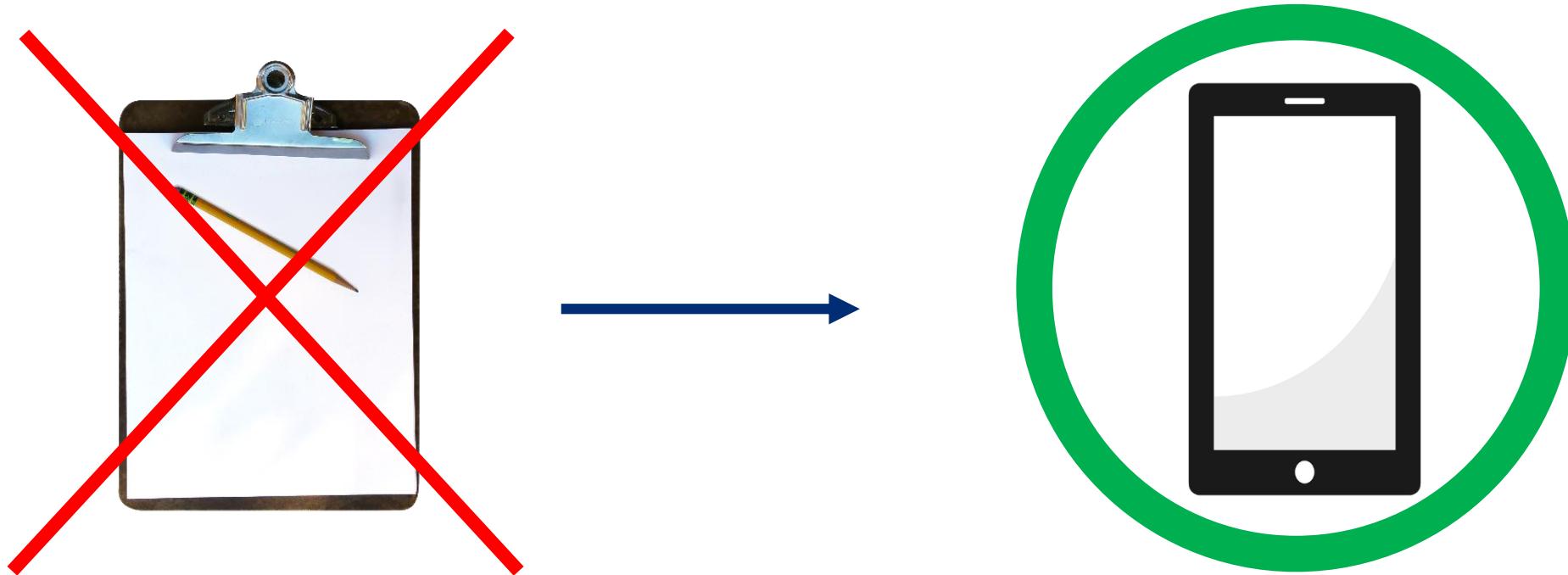
# Paper-based approach

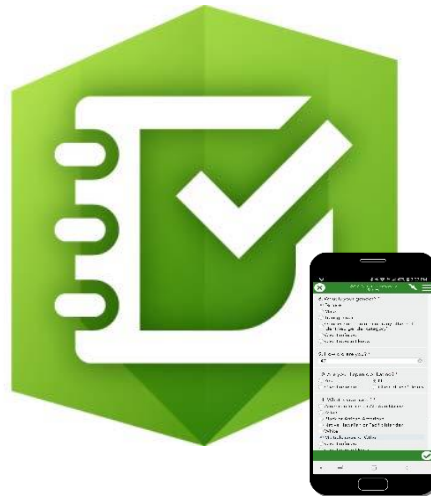
- Traditionally done using paper, pen and clipboard
- Completed surveys were collected for each community
- Contents were manually entered into a database



# Transition to a digital survey with Survey123 for ArcGIS

Page 4





# Benefits of the ArcGIS Platform

Page 6



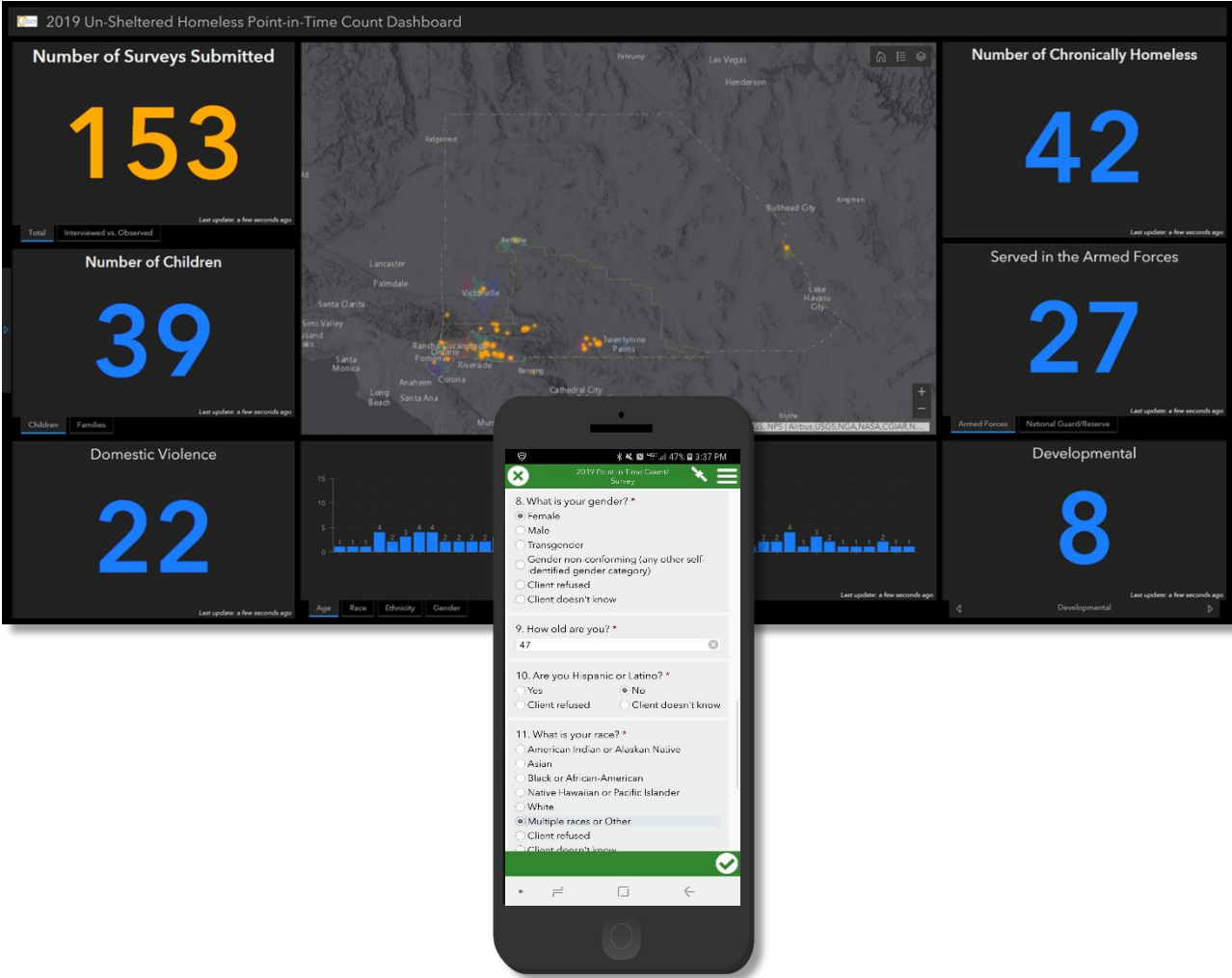
# Benefits of the ArcGIS Platform

Page 7

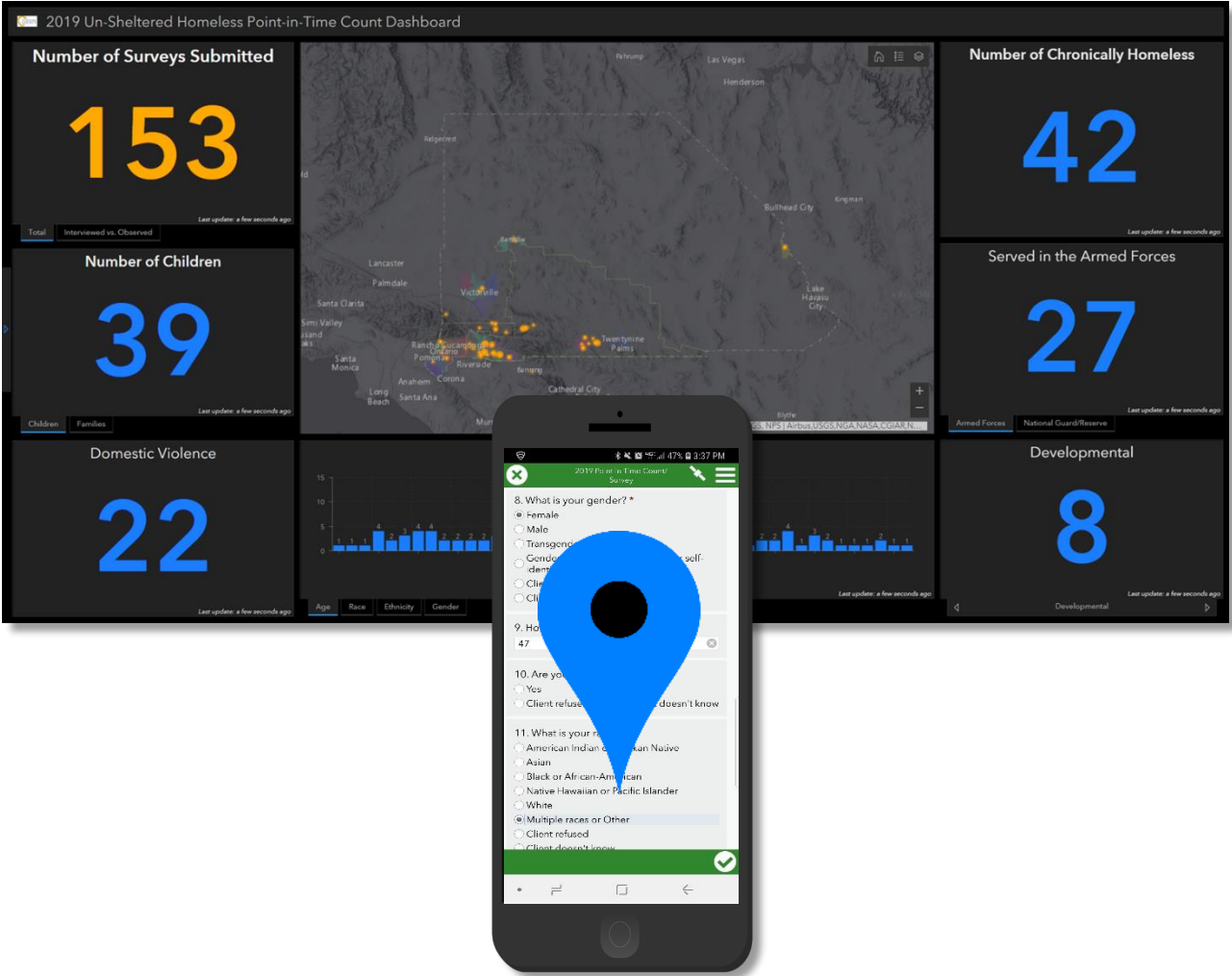




# Benefits of the ArcGIS Platform

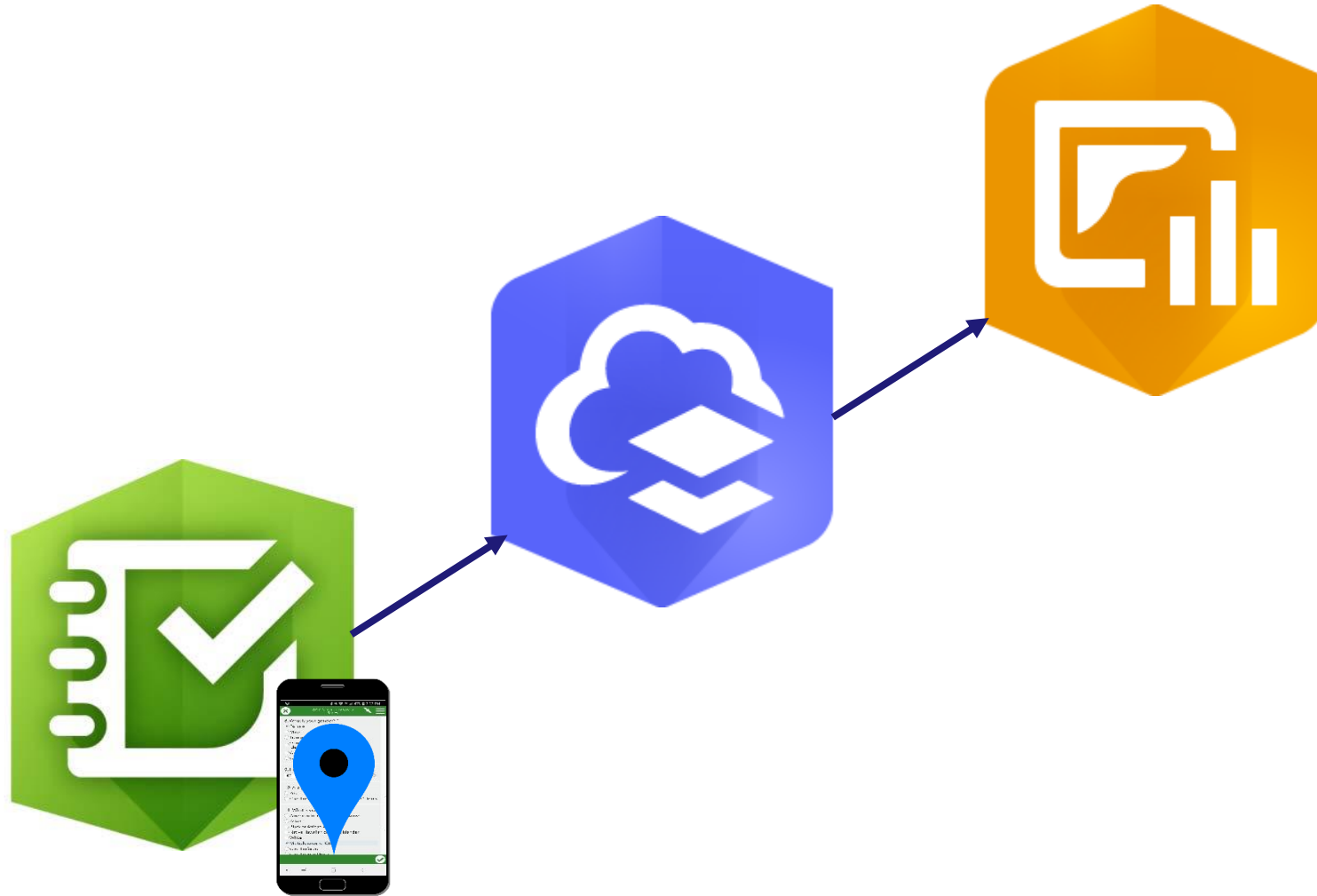






# Benefits of the ArcGIS Platform

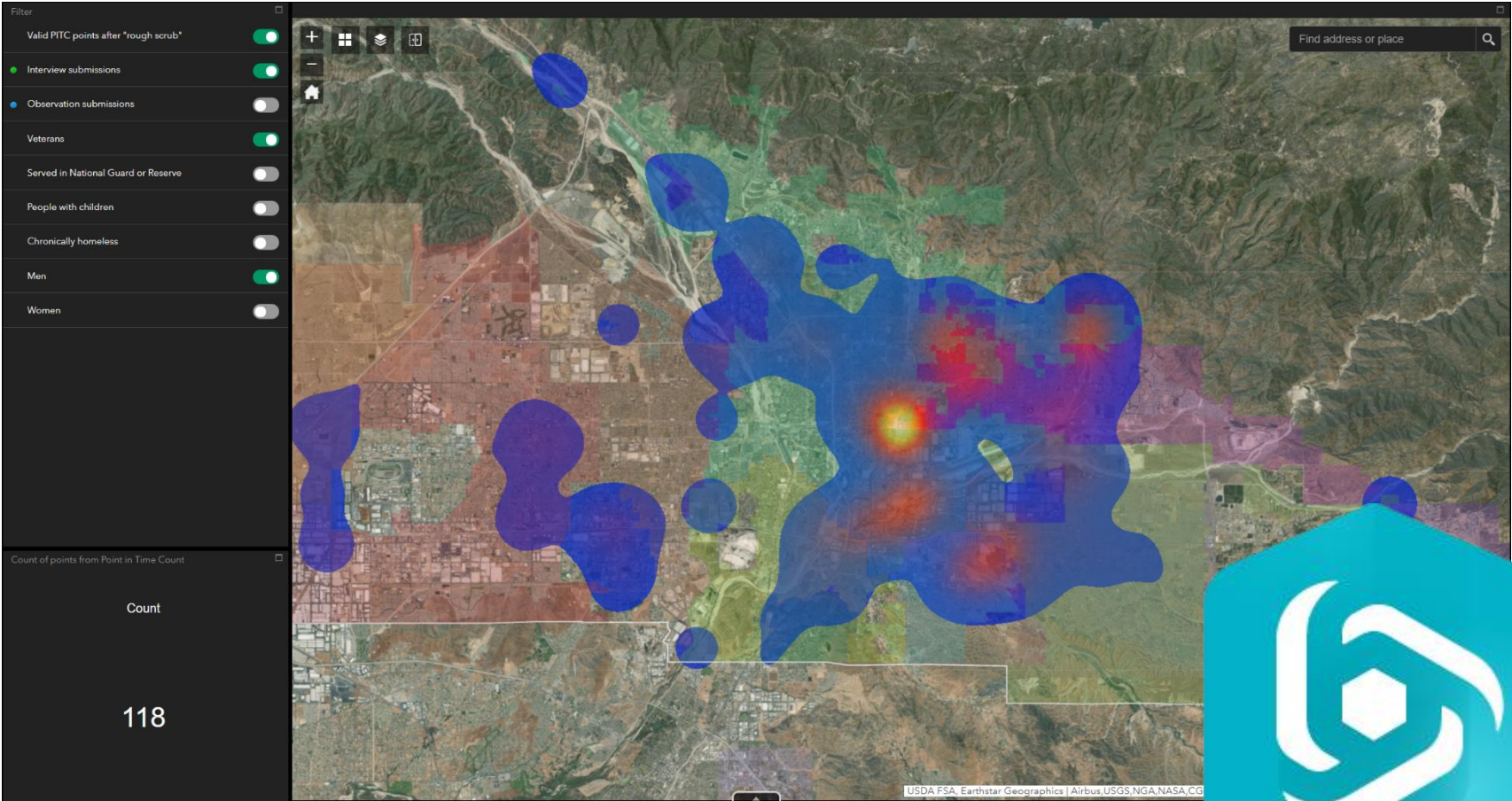
Page 10



# Benefits of the ArcGIS Platform

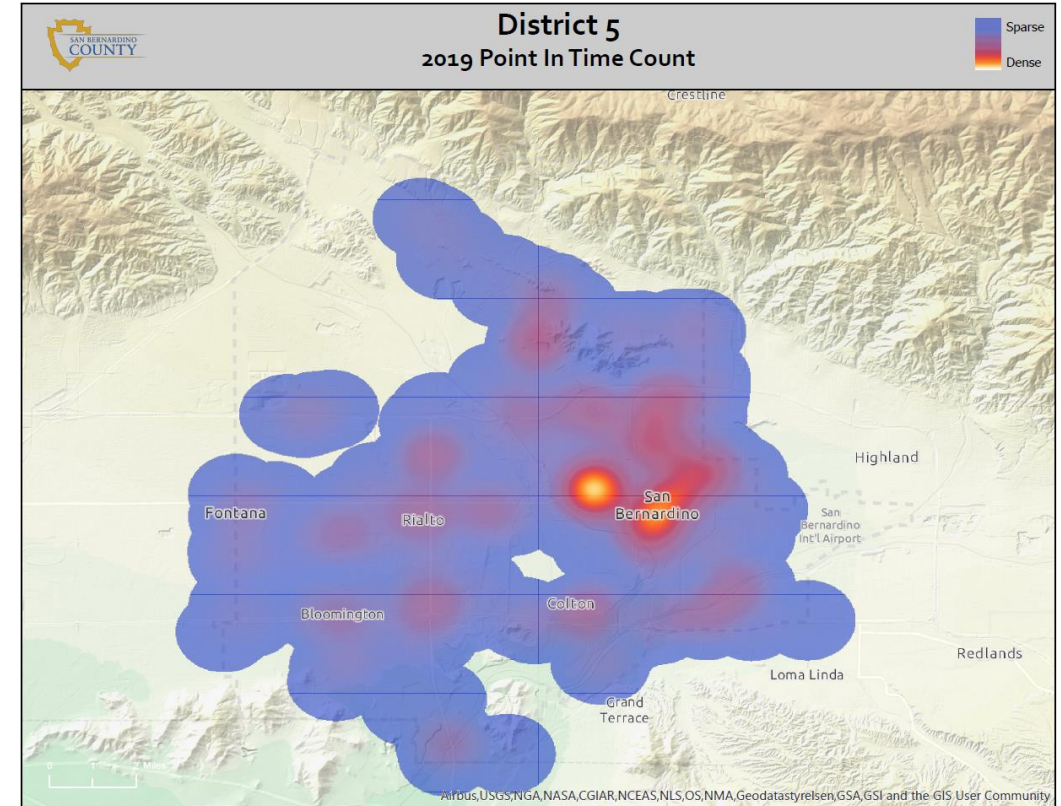


# Benefits of the ArcGIS Platform





- Volunteer feedback was overwhelmingly positive
- Leaders could view progress in real-time
- We were able to target areas for outreach by the HOPE team
- Leveraging GPS location allowed for
  - Examining spatial patterns in homelessness
  - Creating maps for inclusion in reports
  - Overlaying data from the PITC with other layers related to homelessness to observe broader patterns



- Additional potential analyses of spatial patterns of homelessness as it relates to
  - Cost of living changes across the County
  - Changes in legislation regarding prison and jail release
- As subsequent homeless Point in Time Counts are conducted in the future, examine how spatial distribution of homelessness changes over time





# Thank you. Questions?

Page 15



Information Services

[www.SBCounty.gov](http://www.SBCounty.gov)