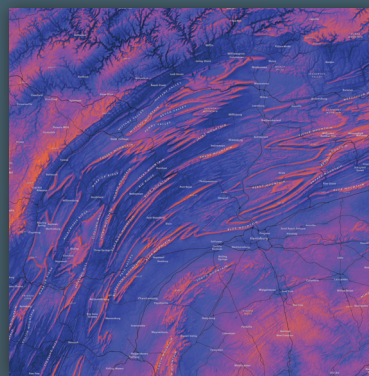


Discover the beauty of geography with this stunning 2026 wall calendar.

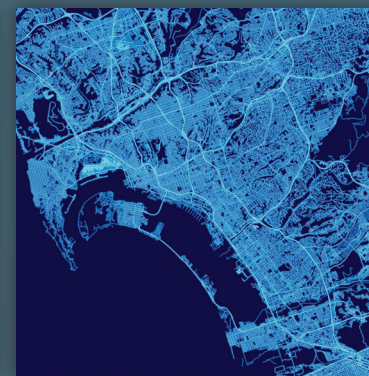
Perfect for anyone with a passion for maps and the powerful stories they tell, this calendar will inspire you to see the **art in cartography**.

- 13 beautiful maps by Esri cartographers John Nelson, Kenneth Field, Craig McCabe, Emily Meriam, Heather Gabriel Smith, Sarah Bell, Joshua Stevens, and Keith VanGraafeiland
- 16 months (September 2025–December 2026)
- Generous writing space for appointments and reminders
- US holidays and religious observances, plus fun GIS facts and history

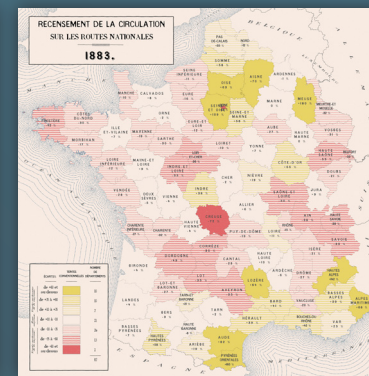
Sept–Dec 2025



January



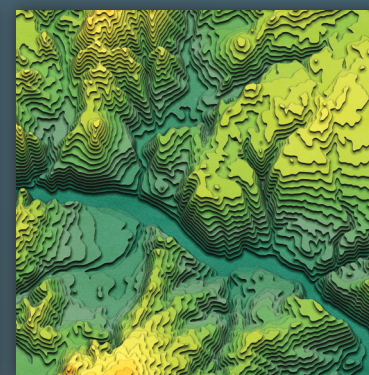
February



March



April



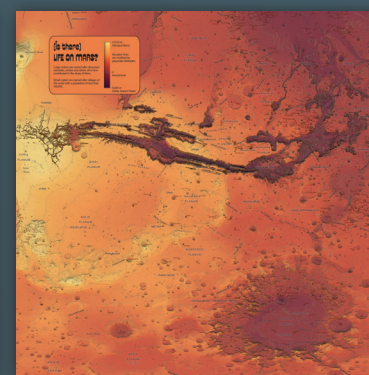
May



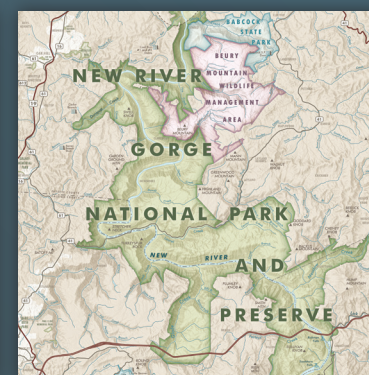
June



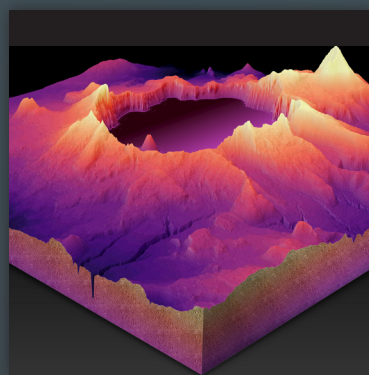
July



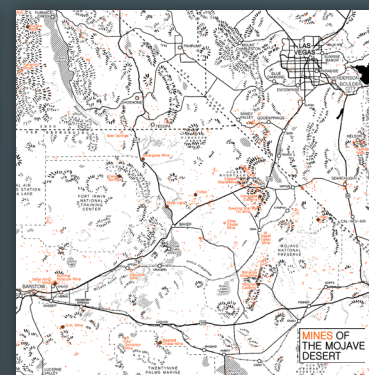
August



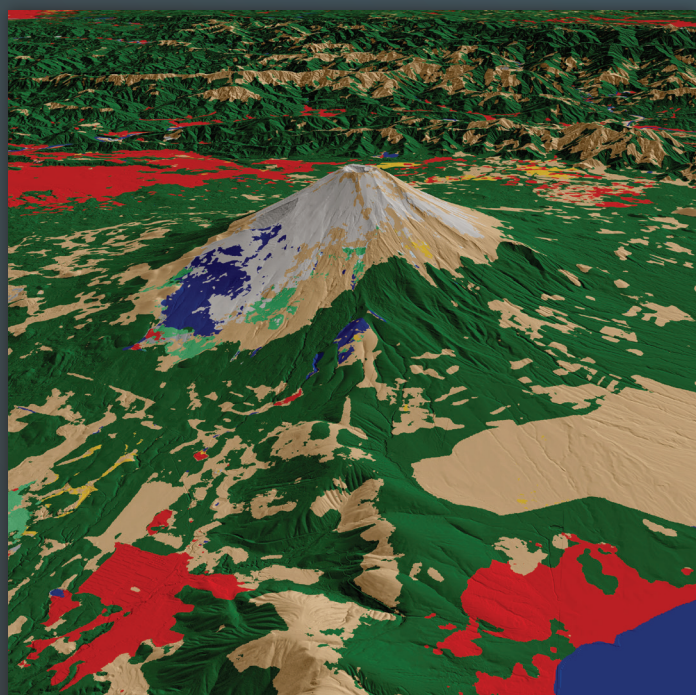
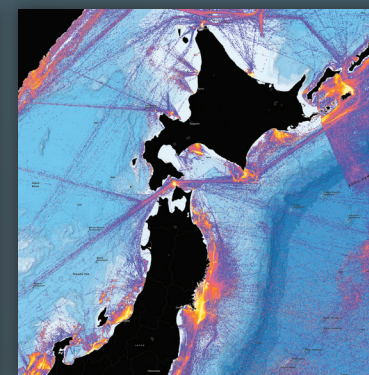
September



October



December



NOVEMBER 2026

Local Voices, Local Choices

Local Voices, Local Choices chronicles the stories behind Jane Goodall's holistic approach to conservation in Africa.

Sunday	Monday	Tuesday	Wednesday	Thursday	Friday	Saturday
1	2	3	4	5	6	7
Daylight saving time ends		Election Day				
8	9	10	11	12	13	14
Daylight saving time begins			Veterans Day			
15	16	17	18	19	20	21
			GIS Day			
22	23	24	25	26	27	28
				Thanksgiving Day		
29	30	<p>Did You Know? The first GIS Day was held on November 18, 1999, when Esri cofounder and president Jack Dangermond and GIS pioneer Roger Tomlinson met a few students at Murch Elementary School in Washington, DC. Today, GIS Day continues with thousands of events worldwide.</p>				

Sentinel-2 10 m Land Use/Land Cover Around Mount Fuji, Japan, by Craig McCabe, ArcGIS Living Atlas of the World, Environment team. This image shows 2024 Sentinel-2 10 m Land Use/Land Cover types draped on 3D terrain, surrounding Japan's iconic Mount Fuji. A product of the European Space Agency, this time series can be used to inform policy and land management decisions or monitor yearly change. The colors seen here indicate a dominance of trees (green), rangeland (tan), built areas (red), snow (white), and water (blue) around this imposing but currently dormant volcano.

Sentinel-2 10 m Land Use/Land Cover Time Series from Esri, Ingest Observations; Topobathy 3D from Mosaic, Airbus DS, USGS, NASA, NSDI, NASA, CSAR, General Bathymetric Chart of the Oceans (GEBCO), N. Robinson, NASA, N. D. OS, IMA, Geodatasystem, USA, and the GIS user community; Topobathy Hillshade from Airbus, USGS, NASA, NSDI, NASA, CSAR, GEBCO, NLS, DS, NASA, Geodatasystem, USA, OS, and the GIS user community.

November



191406

Copyright © 2025 Esri. All rights reserved.

ISBN-13: 978-1-58948-818-2



9 781589 488182