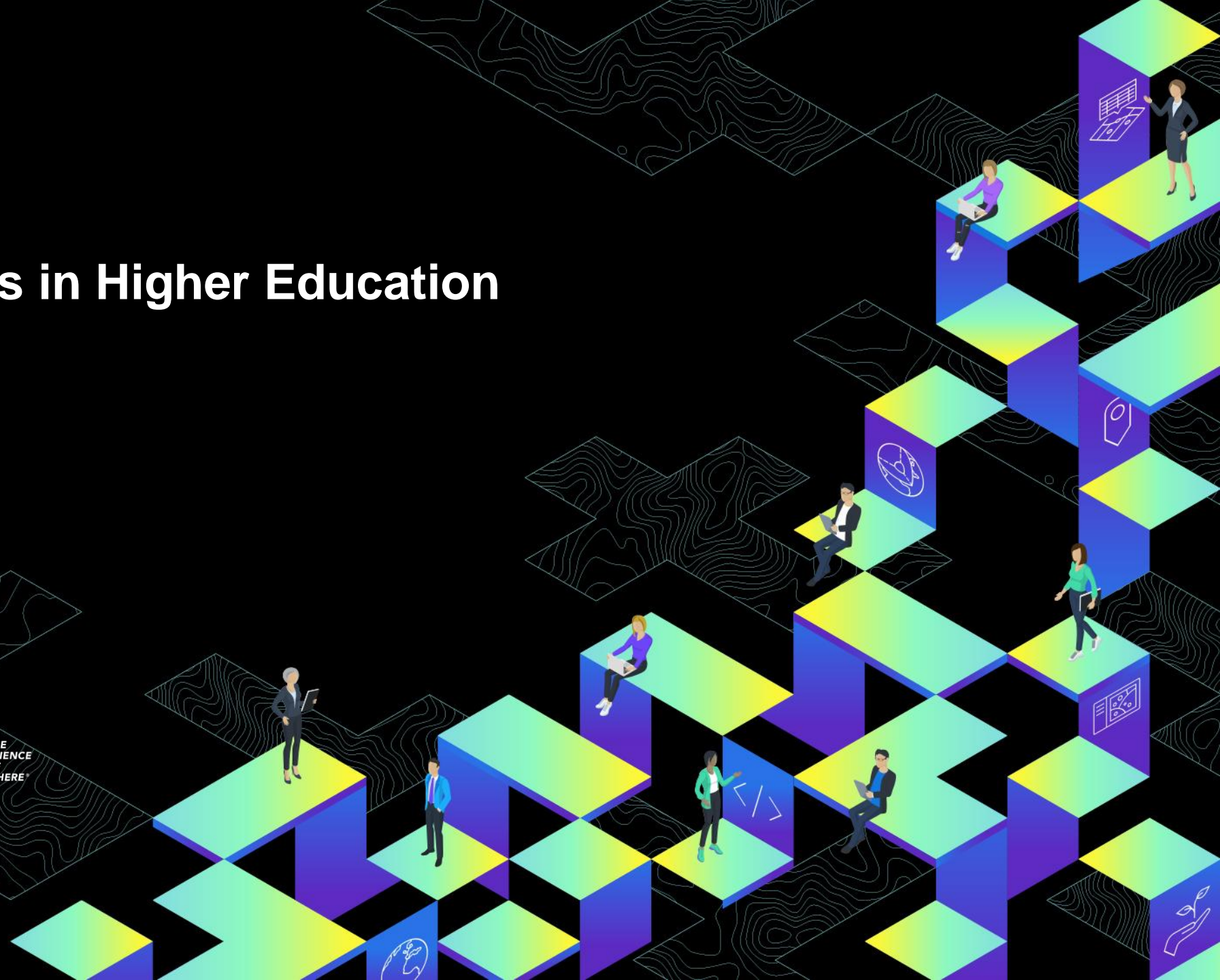


# ArcGIS StoryMaps in Higher Education



# ARCGIS STORY MAPS IN HIGHER EDUCATION

**Miriam Olivares**, GIS Librarian, Marx Science & Social Science Library at Yale.

*“Promoting Geospatial Technology in Higher-Ed through StoryMaps”*

**Shana Crosson** - Academic Technologist in the College of Liberal Arts,  
University of Minnesota

*“StoryMaps infuse Spatial Thinking across all disciplines”*

**Peter Knoop** - IT Advocate for College of Literature, Science, and the Arts (LSA)  
at U of Michigan –

*“The use of StoryMaps in digital humanities,*

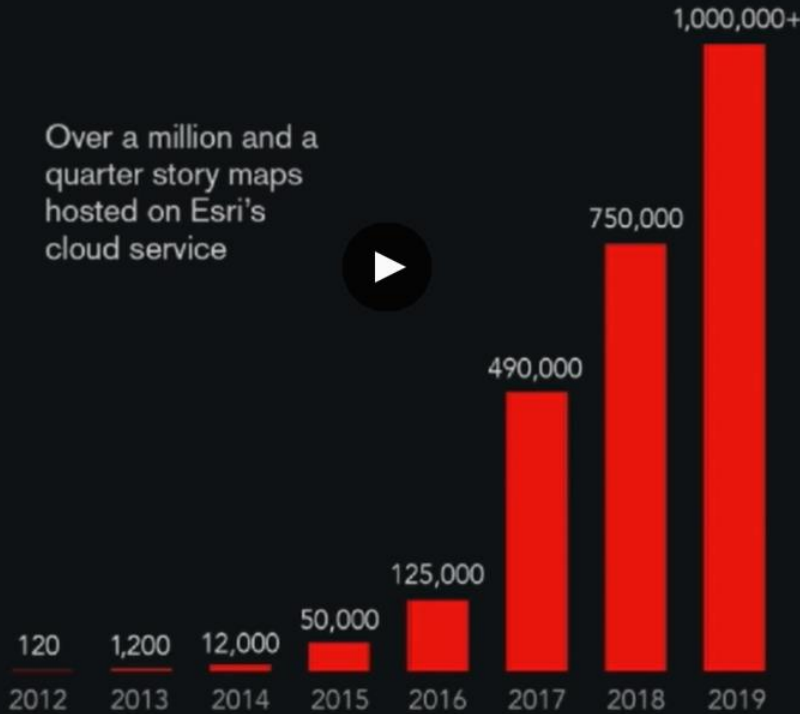
**John Glover** – Professor, Department of History, University of Redlands,

*“StoryMaps as potential peer-reviewed “articles” for academic credit”*



# StoryMaps have grown rapidly in popularity.

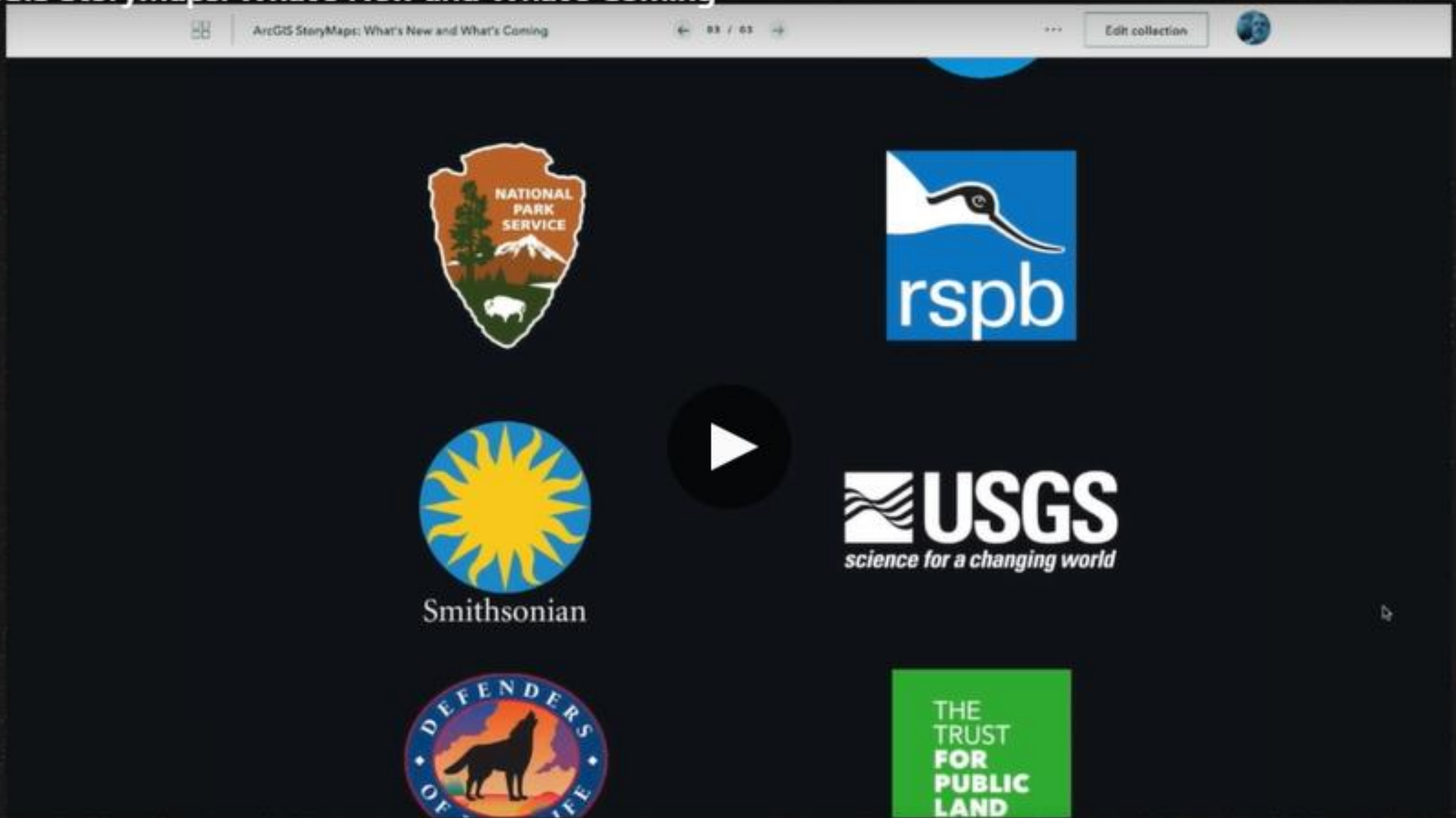
Over a million and a quarter story maps hosted on Esri's cloud service





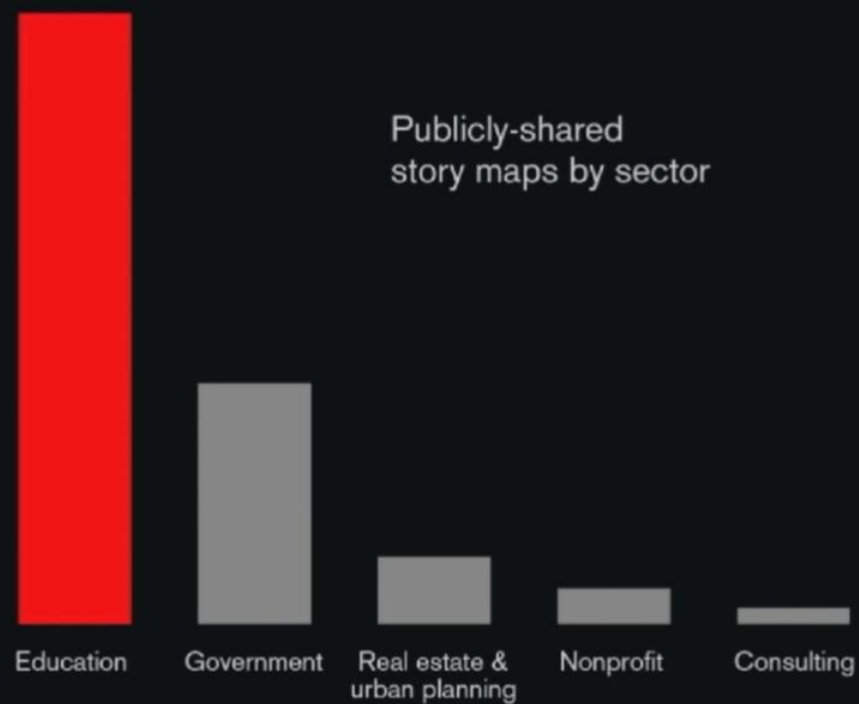


# ArcGIS StoryMaps: What's New and What's Coming





## StoryMaps are exploding in the classroom.



## Start with a great story



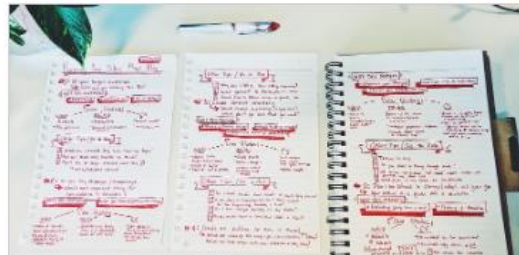
### STORY

#### Nine steps to great storytelling

Allen Carroll

Set yourself on the path to crafting compelling digital narratives.

[View the story](#)



### ARTICLE

#### Planning and outlining your story

Hannah Wilber

The first step to crafting a compelling story is taking the time to prepare and map out your ideas.

[Read the article](#)



### DOWNLOAD

#### Planning your next story

Esri's StoryMaps team

Use this worksheet as a tool to identify some key story components before you dive into the ArcGIS StoryMaps builder.

[Download the worksheet](#)



### STORY

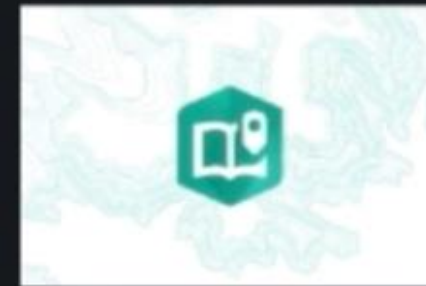
#### Moving to ArcGIS StoryMaps

# Find us at [esri.com/storymaps](https://esri.com/storymaps)

## Digital Storytelling with Custom Maps | ArcGIS StoryMaps

ArcGIS StoryMaps bring text, photos & videos together with custom maps to help you create a narrative that informs and inspires. Digital...

<https://www.esri.com>



Powered by ArcGIS StoryMaps

**Also – excellent 2020 UC Workshop: ArcGIS StoryMaps What's New and What's Coming**



The Yale University logo, featuring the word "Yale" in white serif font inside a dark blue circle. The background of the entire slide is a photograph of the interior of a large Gothic cathedral, showing high vaulted ceilings, stone columns, and a distant altar with a stained glass window.

Yale

# Promoting Geospatial Technology in Higher-Ed through StoryMaps

Marx Science & Social Science Library  
Miriam Olivares, GISP

A graphic consisting of four concentric white circles on the right side of the slide, overlaid on the cathedral background.

Esri Education Summit 2020

# Background

- StoryMaps well received since its introduction
- Easy to teach, easy to increase complexity
- Connects tech curiosity with a human need to tell stories





# What we have learned

## **Accessible**

Everyone can create a StoryMap

## **Progressive learning**

Ideal to introduce GIS & increase complexity

## **Flexible**

Increasing creativity and feasibility

## **Enticing**

Large attendance and follow-ups

## **Collaborative**

Interesting to researchers & students in all fields of study

## **Promotes self-learning**

Once discovered, difficult to stop



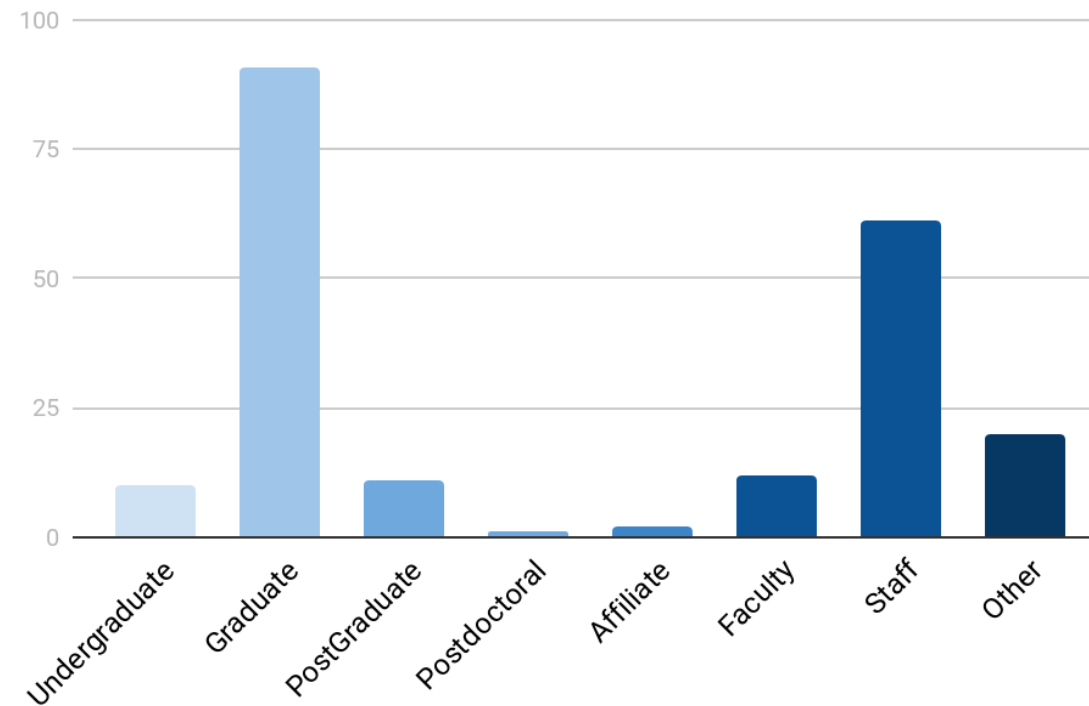




Workshops are always a success



# Demographics



Data: Registration & attendance



# Yale StoryMaps Network

Let's explore this idea...



esri®

THE  
SCIENCE  
OF  
WHERE®

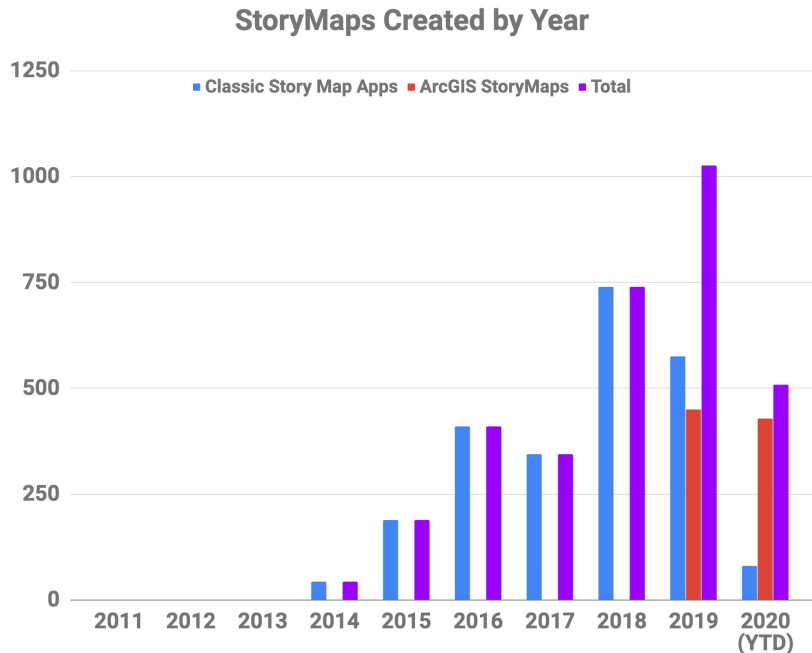
# StoryMaps in the Digital Humanities and Digital Scholarship

*Peter A. Knoop*

**M** | LSA TECHNOLOGY SERVICES  
UNIVERSITY OF MICHIGAN



# StoryMap Usage at the University of Michigan





- Users now prefer ArcGIS StoryMaps
  - Only 15% of courses using StoryMaps mention StoryMaps in syllabus
- ⇒ “StoryMaps are just another tool.”
- ⇒ “Start with StoryMaps, go on to GIS...”

# Group StoryMap Projects


- Why?
  - Collaboration skills are educational goal
  - Too many students in large courses for instructor to grade individual StoryMaps
- Regular groups → distributed editing
  - Individuals work on standalone pieces
  - Aggregate with Collections, Series, *etc.*
- Shared Update → collaborative editing
  - (formerly known as Access and Update groups)
  - Requires organized coordination!
- Empower everyone to create Shared Update groups starting Fall 2020
  - Incompatible with New Member Defaults


2


[2020 EARTH 380 Mineral Resources \(Writing Requirement\)](#)  Delete Group

Owner: [knoop\\_umich](#)  
Created: Aug 2, 2020 Last Updated: Aug 2, 2020 Viewable by:  Group Members


2

[2020 ENGLISH 319 StoryMaps](#)  Delete Group

Owner: [knoop\\_umich](#)  
Created: Aug 2, 2020 Last Updated: Aug 2, 2020 Viewable by:  Group Members


 Shared Update


Group Details

What items in the group can its members update? 

☐ Only their own items

☒ All items (group membership is limited to the organization)

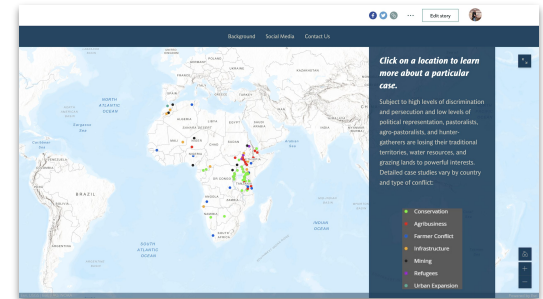
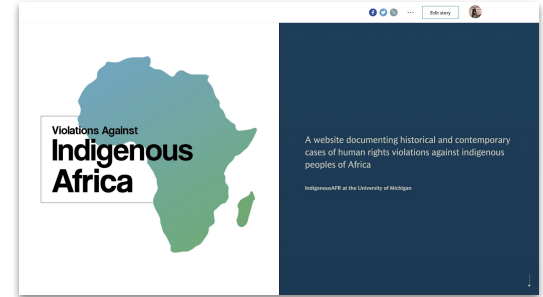
Edit role 

Create with update capabilities 

Allow member to create groups with update capabilities.

# Research and Public Outreach

- [Violations Against Indigenous Africa](#)
  - *A Website documenting historical and contemporary cases of human rights violations against indigenous peoples of Africa*
  - ArcGIS StoryMap as the landing page
    - >80 Classic Story Maps documenting case studies
  - Easy-to-author; professional looking; interactive maps
- Started with anonymous public account in 2017
- In 2020 students formed a campus student group:
  - #IndigenousAFR
  - Migrated to organizational account
- Additional educational goals
  - Social media marketing campaigns
  - Google analytics
  - Peer-training

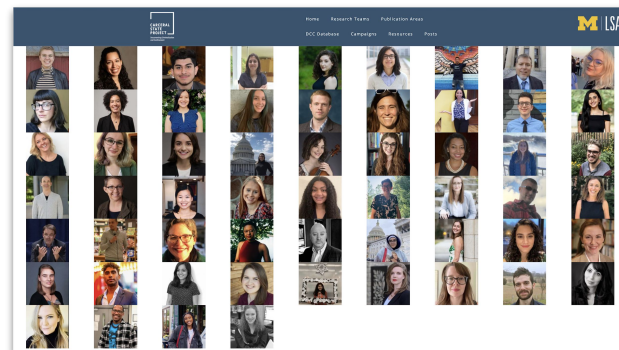
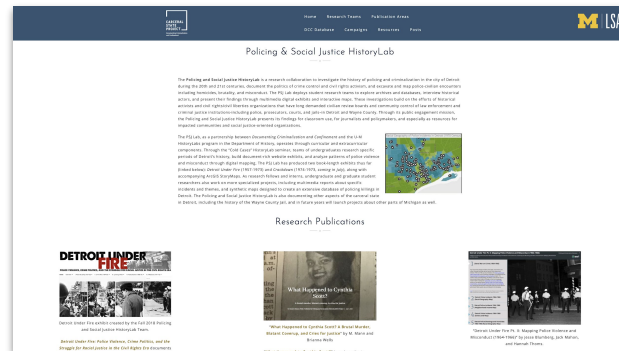


# Coursework as Scholarly-work

## Policing & Social Justice HistoryLab

- *Documenting Criminalization and Confinement*
- Matt Lassiter (History) and a large team
- Undergraduate courses (e.g., HST393) and accompanying extracurricular activities
- Produced two book-length exhibits with accompanying StoryMaps, and synthetic maps designed to create an extensive database of policing killings in Detroit

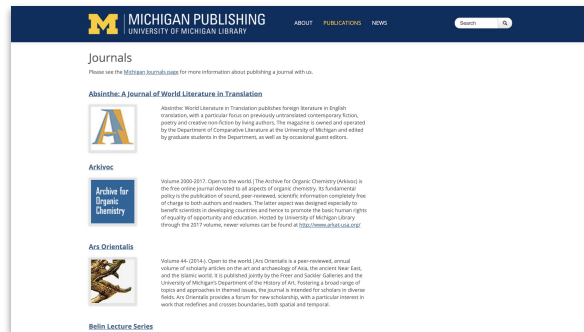
*“History undergraduate alumni related StoryMaps was a key consideration in their hiring, even though not listed as a requirement.”*





# Scholarly StoryMaps Journal

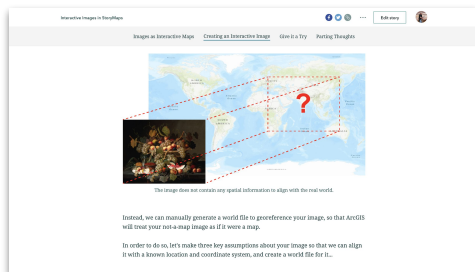
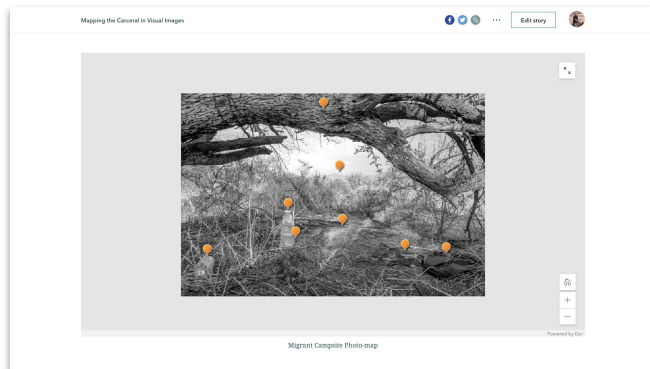
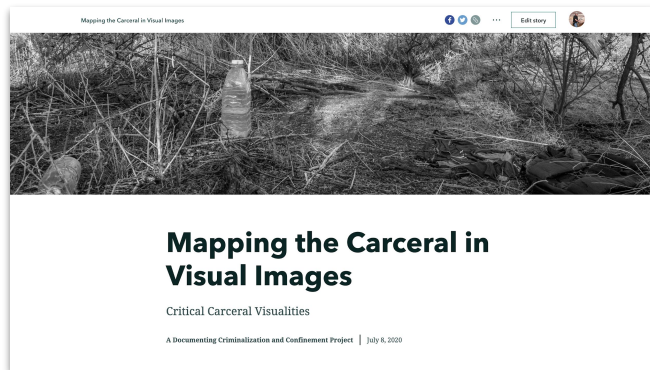
- [Archives and Black Digital Studies](#)
  - Magdalena Zaborowska (American Culture and African American Studies)
  - AMCULT601/DAAS558 “Archives, Preservation, Material Culture and Black Digital Studies” (using U-M archives)
  - Student projects produce StoryMaps to scholarly standards
  - New topics each course offering
- [Michigan Journals](#) (Library)
  - Proposed journal, “Archives in Black Digital Studies”
  - Student managed, faculty mentored, library facilitated
  - Digital version: Incorporate StoryMaps
  - (Optional print version: PDFs of StoryMaps)
  - Currently raising funds (~\$2000)



*Handling sensitive content in StoryMaps with Slideshow block ([example](#))*

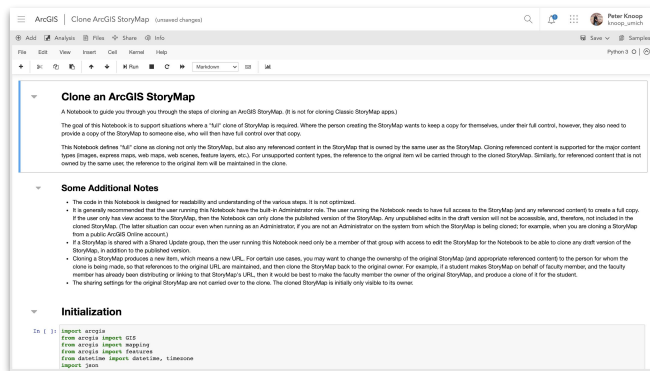
# Interactive Images as Maps

- Mapping the Carceral in Visual Images
  - *Documenting Criminalization and Confinement*
  - Rachel Cawkell (History, grad student)
  - Lead readers along a narrative path, exploring objects within the spatial context of a photo
  - Turn a not-a-map image into an interactive Web Map
- Do it yourself
  - Interactive Images in StoryMaps



# Cloning ArcGIS StoryMaps

- “Duplicate story” (added in April 2020)
  - Partial clone - copies internal contents of the StoryMap
- [Clone an ArcGIS StoryMap](#)
  - ArcGIS Notebook
  - Full clone - also copies referenced content, if same owner as StoryMap (e.g., Web Maps, Web Scenes, Feature Layers)
  - Well-organized JSON format, but undocumented
- Why make a clone?
  - Authoritative copy-of-record for grading purposes
  - Students retains a copy for highlighting their skills
  - Enables you to clone any publicly accessible StoryMap from any organization to your own organization



# What's next for ArcGIS StoryMaps?



- Use your own image layer or custom basemap in Express Maps
  - Incorporating georeferenced historical maps
  - Key for historic context when road networks have changed, place names are different, *etc.*
- Support saving pop-up state when placing maps
- Better self-hosting support for custom project-based URLs
  - Current solution doesn't scale well (ArcGIS Enterprise 10.8.1)
- Expand time-aware support for longer timescales (*e.g.*, BCE, geologic time)
  - More so an underlying issue with ArcGIS, than StoryMaps itself
- Improve collaborative editing support
  - Ideal solution: Google Docs-like experience
  - Less hoops to jump through to use Shared Update groups would be helpful
- Support for “full” clones of ArcGIS StoryMaps