

# 2020 EDUCATION SUMMIT



# Teacher Tips: Generating Joy with ArcGIS Online

Anita Palmer, GISetc

Barbaree Duke, GISetc & Directions Magazine

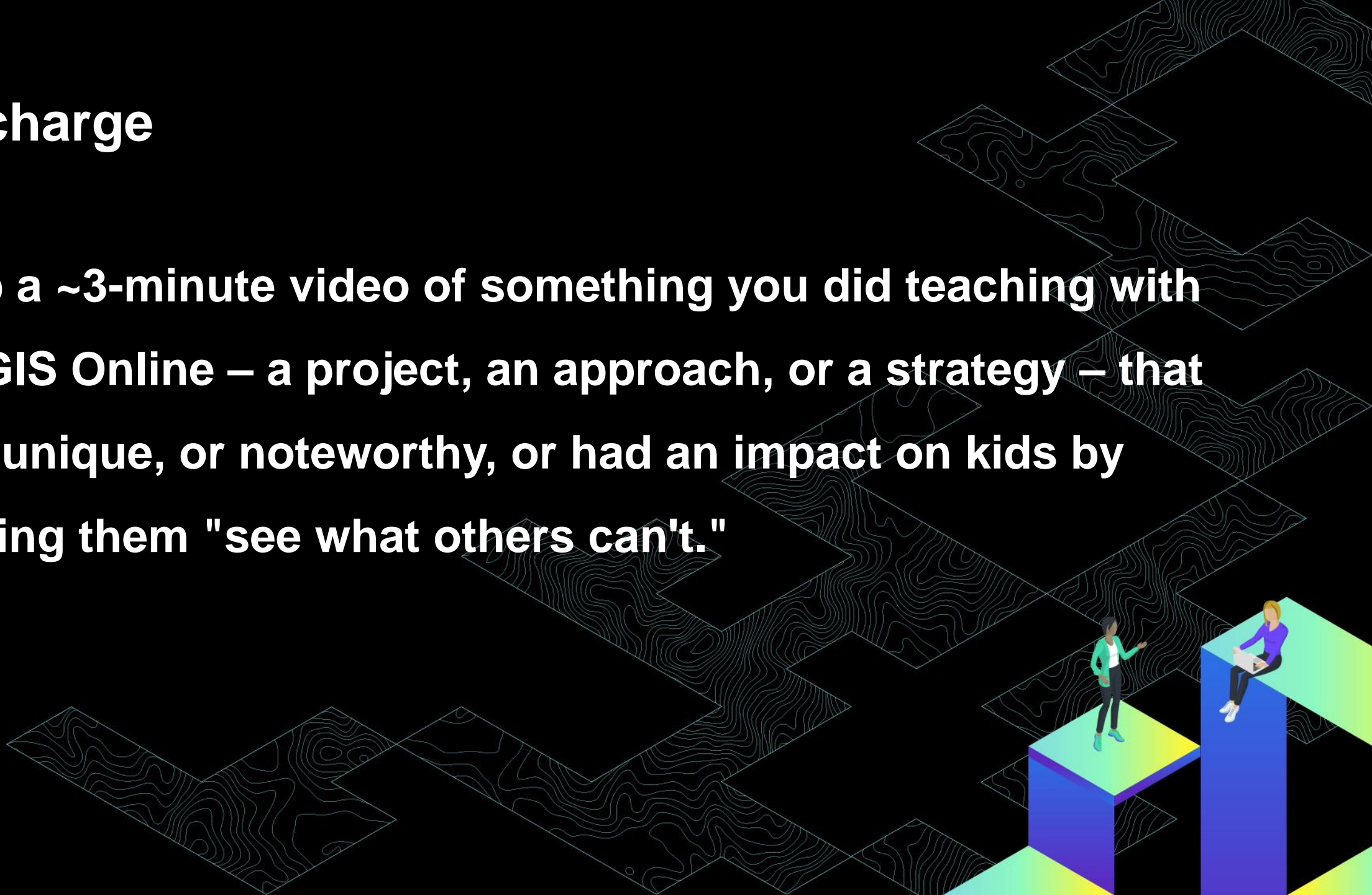
Laura Bowden, Esri






# The charge

**Prep a ~3-minute video of something you did teaching with ArcGIS Online – a project, an approach, or a strategy – that was unique, or noteworthy, or had an impact on kids by helping them "see what others can't."**



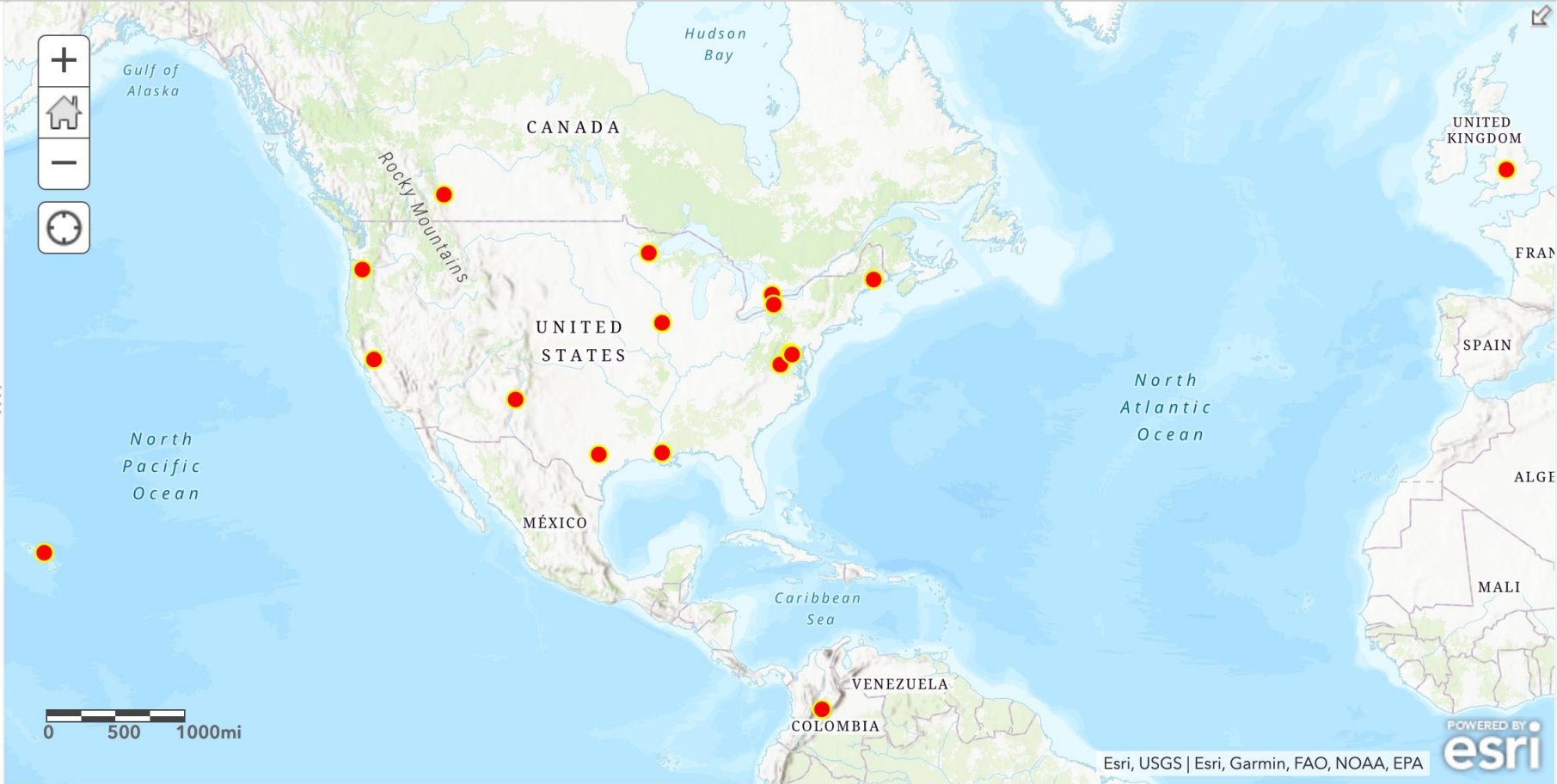
# Submissions from a bunch ... with barely time for 10 ... from HS, MS, ES

Home ▾ Map of K12GIS EdUC2020 Teacher Stories [✎](#) New Map Create Presentation  Charlie ▾

[Details](#) [Add](#) ▾ | [Basemap](#) | [Analysis](#) [Save](#) ▾ [Share](#) [Print](#) ▾ [Directions](#) [Measure](#) [Bookmarks](#)

**Contents**

- K12GIS EdUC2020 Teacher Stories stakeholder
- Topographic



The map displays the following geographical features and labels: Gulf of Alaska, Hudson Bay, CANADA, Rocky Mountains, UNITED STATES, NORTH PACIFIC OCEAN, MEXICO, Caribbean Sea, VENEZUELA, COLOMBIA, North Atlantic Ocean, UNITED KINGDOM, SPAIN, ALGERIA, MALI. A scale bar at the bottom left indicates 0, 500, and 1000 miles. The Esri logo and text 'POWERED BY esri' are in the bottom right corner, along with 'Esri, USGS | Esri, Garmin, FAO, NOAA, EPA'.

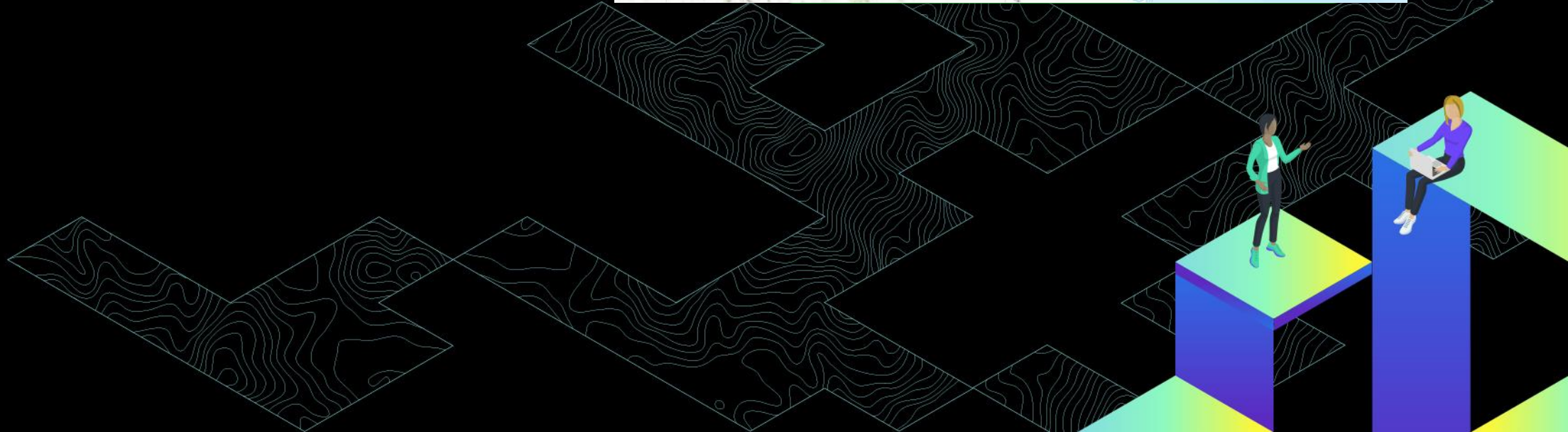
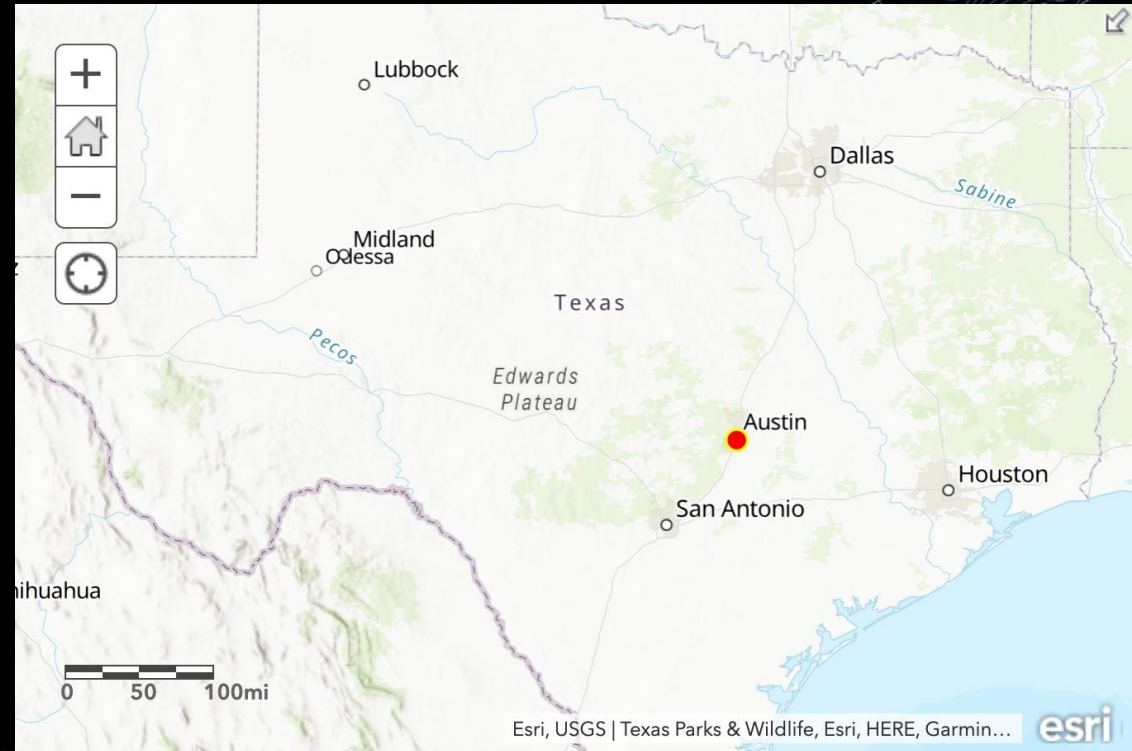
[Trust Center](#) [Contact Esri](#) [Report Abuse](#) [Contact Us](#)



# Maribel Velez Ramos

## High School Geography

### Akins High School Austin, Texas, USA



- Home
- Contact Information
- About Your Teacher
- Syllabus and Class Description
- Careers Areas
- Study Materials
- ArcGIS Online Map: Bonus Grade
- Topic 1: Nature & Perspective
- Topic 2: Population
- Topic 2: Migration
- Topic 3: Cultural Patterns & Processes
- Topic 3: Language
- Topic 3: Religion
- Topic #3: Social Institutions and Gender
- Topic 4: Political Organization of Space
- Topic 5: Agriculture & Rural Development
- Topic 6: Industrialization
- Topic 6: Development



Maribel Velez Ramos  
maribelvelez.ramos@austinisd.org



Hola! and welcome to Akins High School. My name is Maribel Velez Ramos or Ms. Ramos and I am very excited to be your teacher this year. I come from Puerto Rico, a beautiful island in the Caribbean and a territory of the United States .This is my 9th year teaching at Akins High School and my 23rd year as a social studies teacher. I taught almost all high school level social studies courses and have coordinated student groups focusing in geography and environmental education since 1997. I can't wait to meet you and teach you AP Human Geography and World Geography Pre-AP. Have a great school year  
GOOD LUCK EAGLES!

Loom for Chrome is sharing your screen. Stop sharing Hide

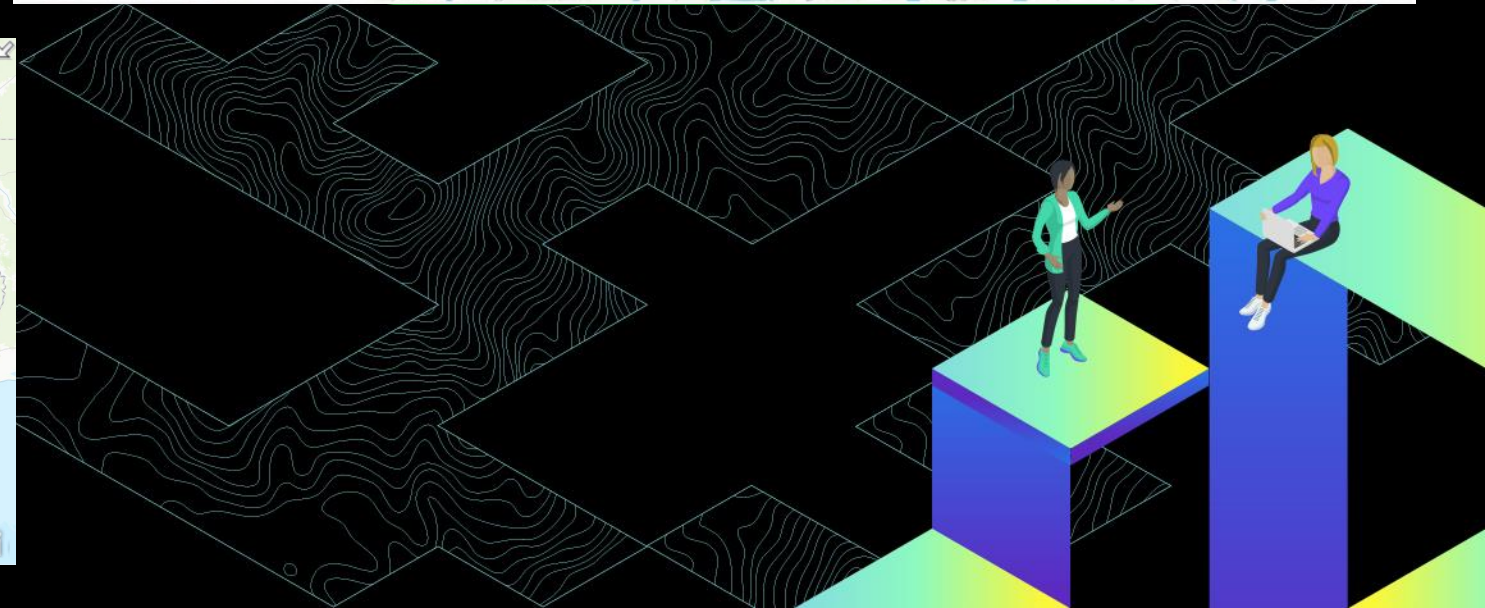
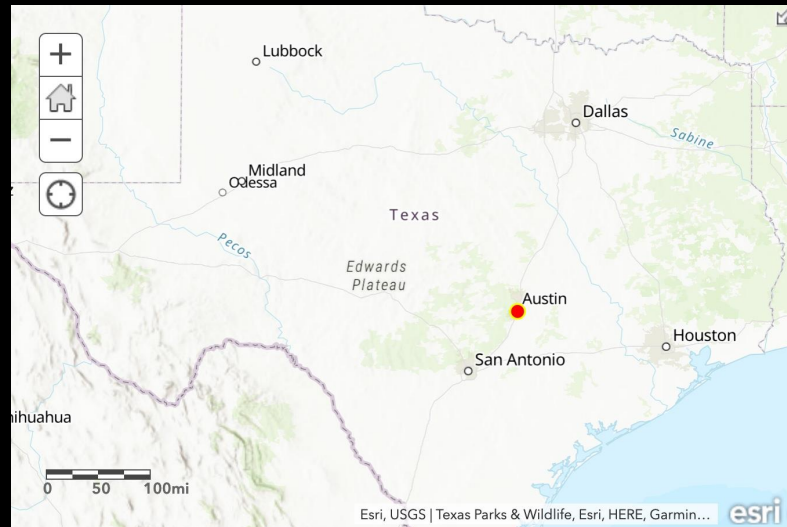
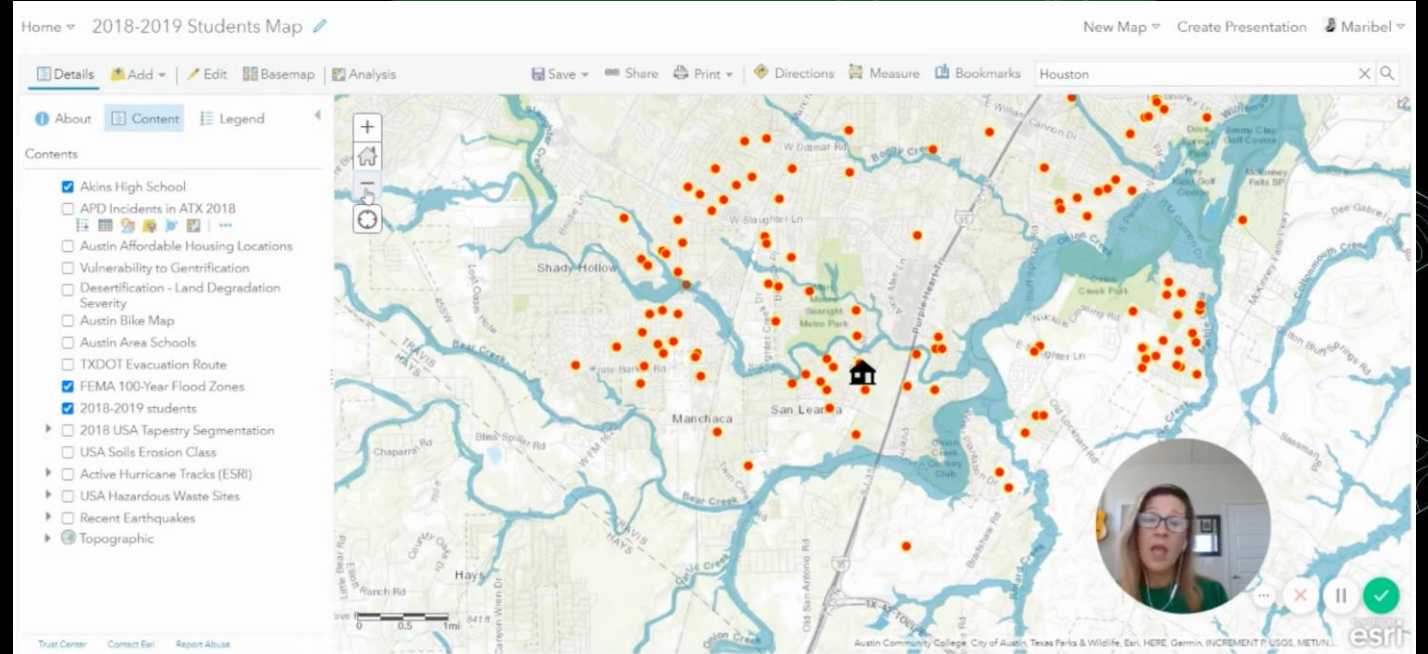




# Maribel Velez Ramos

## High School Geography

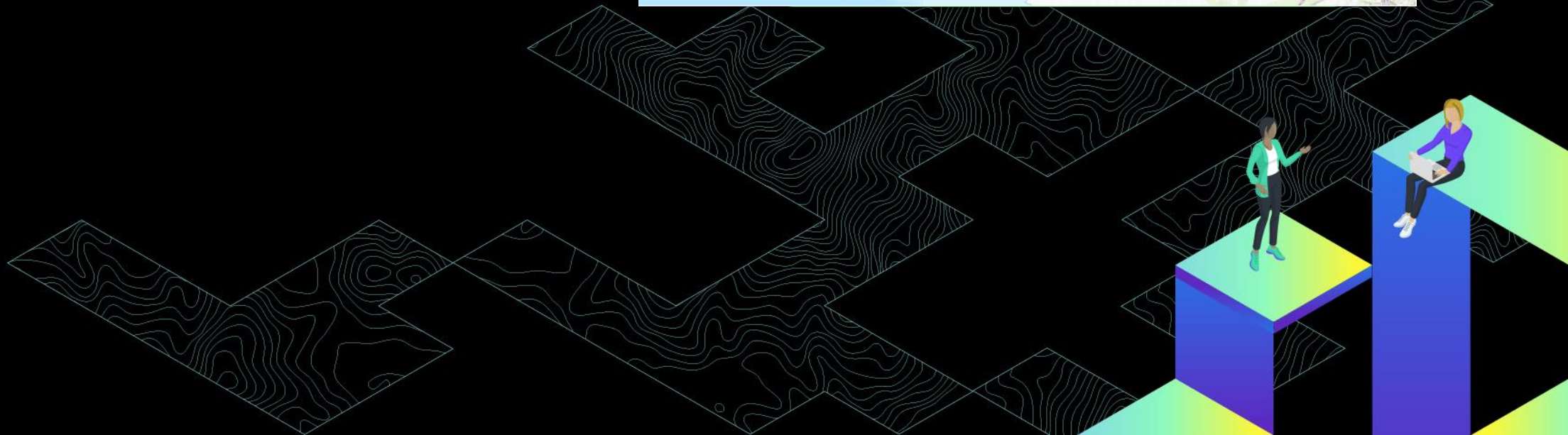
### Akins High School Austin, Texas, USA



**Bob Lang**

**High School  
Geography**

**King Edward VI Camp Hill  
School for Girls  
Birmingham, UK**





Bob Lang  
Geography Teacher  
King Edward VI Camp Hill School for Girls,  
Birmingham, UK  
@boblanggeog  
r.lang@kechg.org.uk



# Flight investigation task



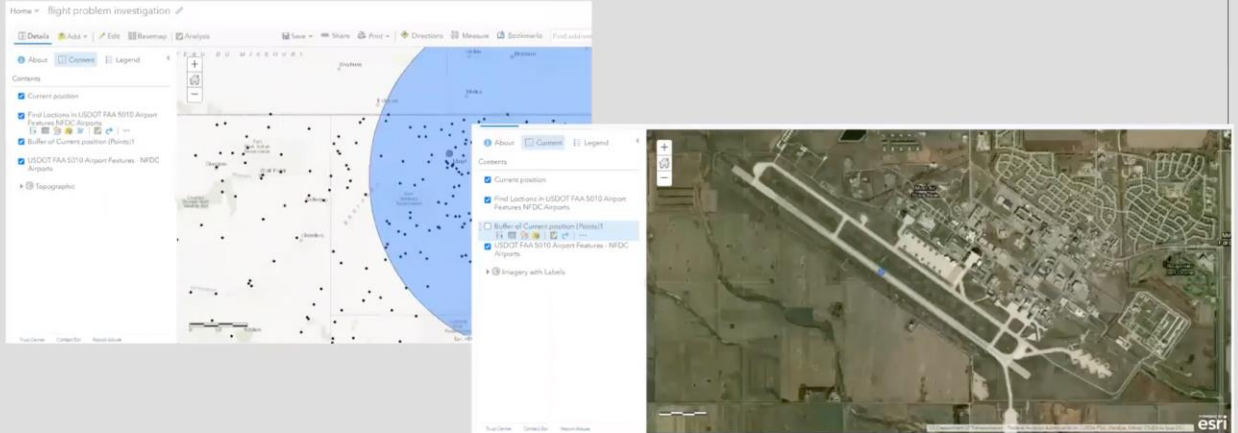
An airplane currently in the air needs to land. You have to find a suitable airport where you can land. This task uses the tools of searching, buffering and filtering to find a suitable airport. It also has the added notion of the need to work under time constraints to get an answer.

# Bob Lang

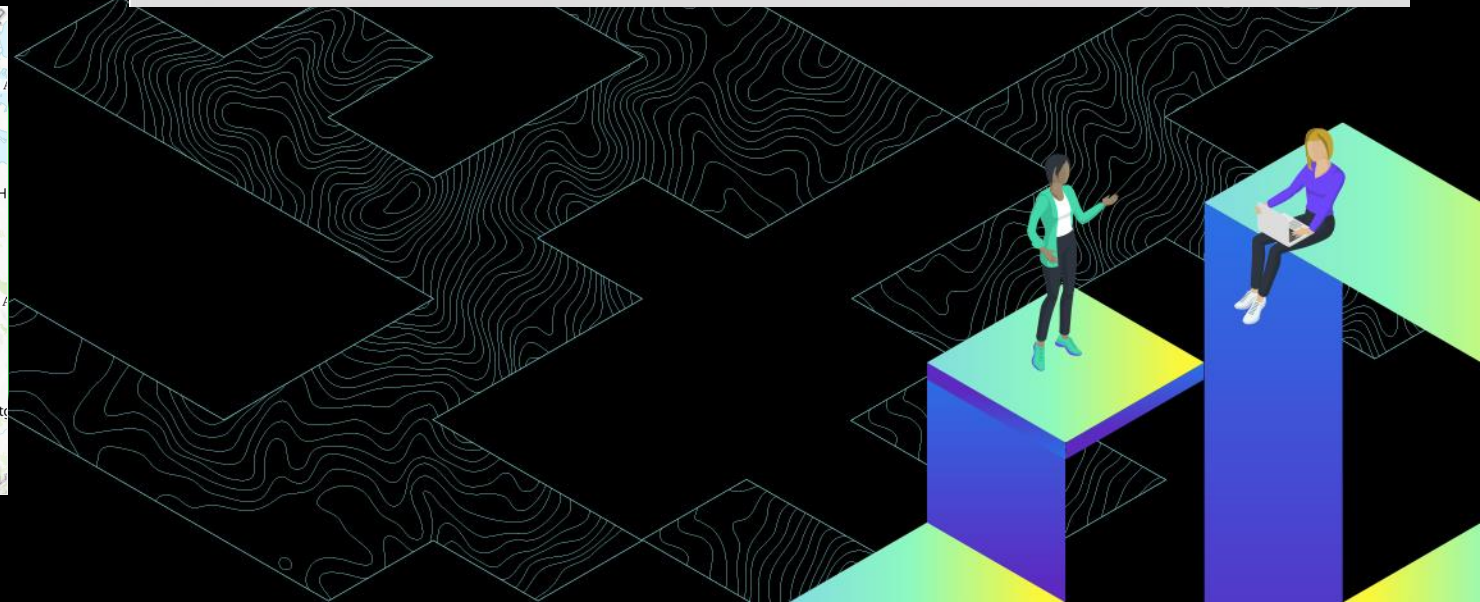
## High School Geography

### King Edward VI Camp Hill School for Girls Birmingham, UK

Minot airbase, Military airbase with runway that is suitable



The screenshot displays the ArcGIS 'Flight problem investigation' tool. The main map shows a blue circular buffer around a central point, with various airport locations marked as black dots. The legend on the right lists layers such as 'Current position', 'Find Locations in USDOT FAA 5110 Airport Features MFDC Airports', 'Buffer of Current position (Point)', and 'USDOT FAA 5110 Airport Features - MFDC Airports'. A small video inset in the top right corner shows a person speaking.

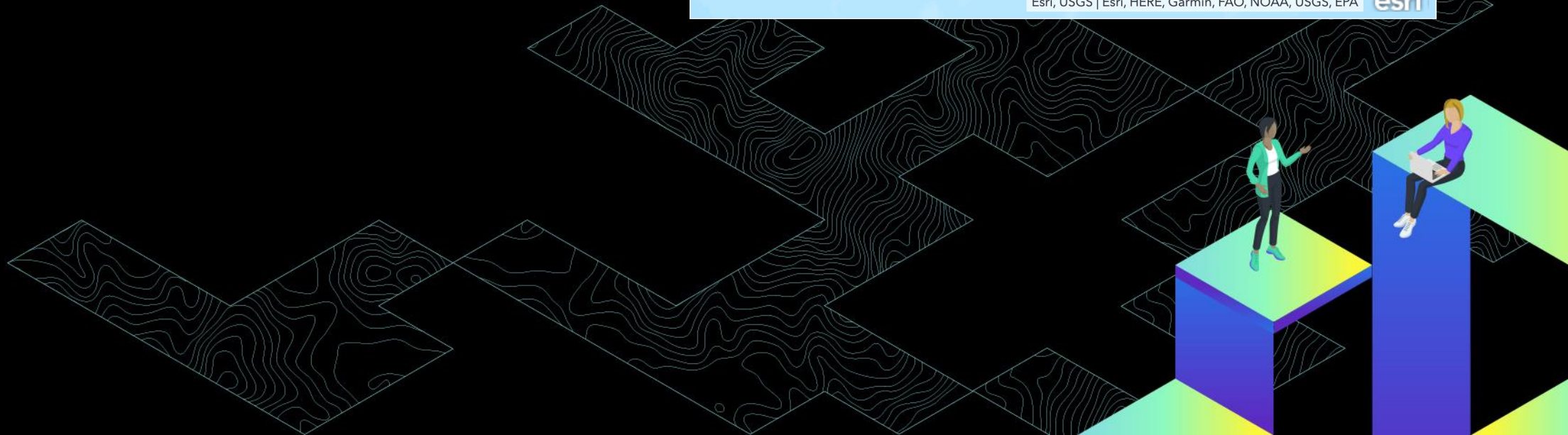
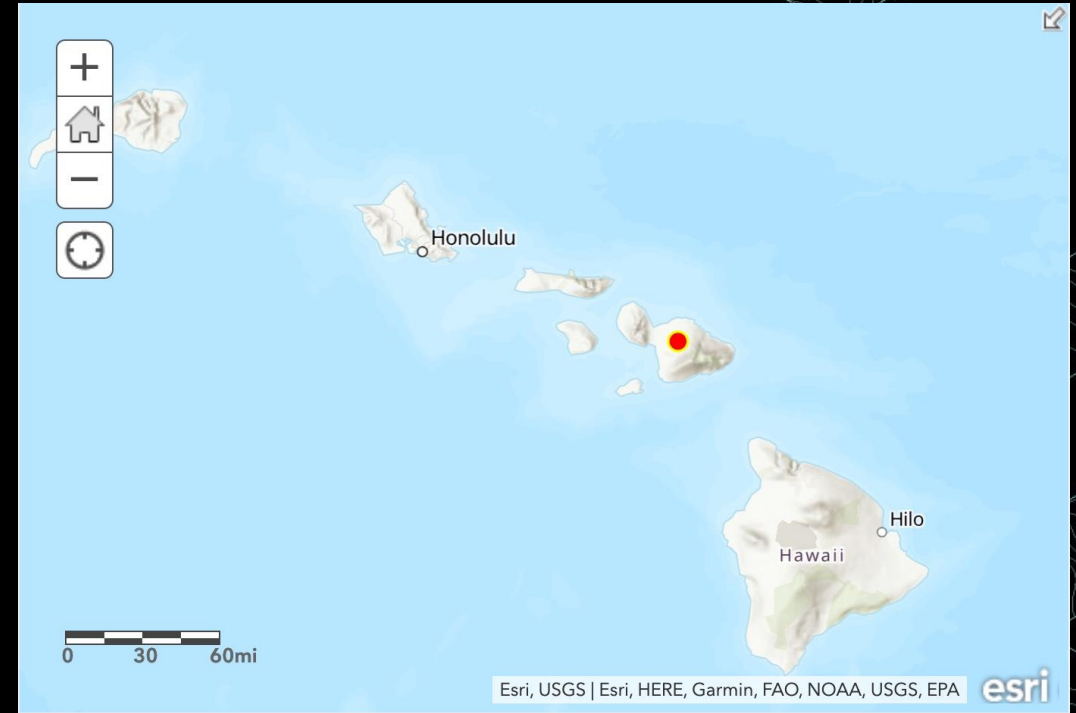




# Emily Haines-Swatek

High School  
STEM

King Kekaulike High School  
Pukalani, Hawaii, USA





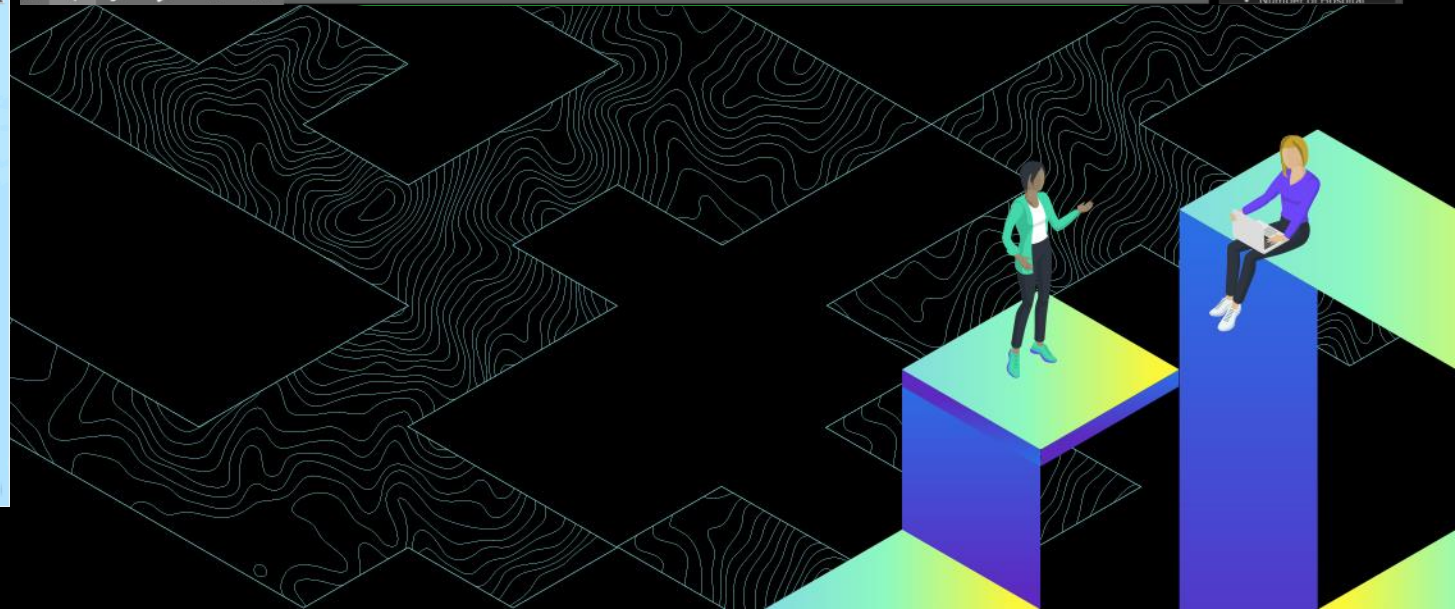
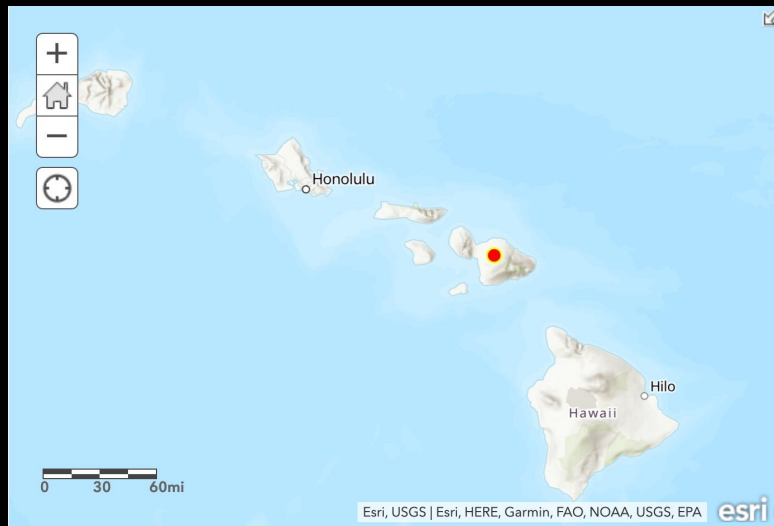
0 20 40mi



# Emily Haines-Swatek

## High School STEM

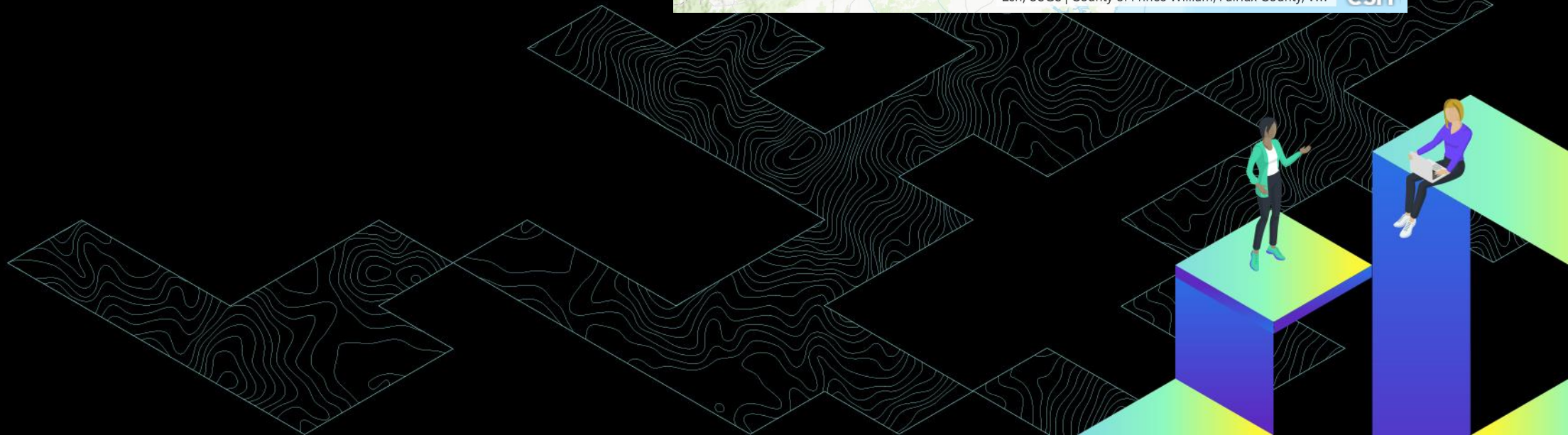
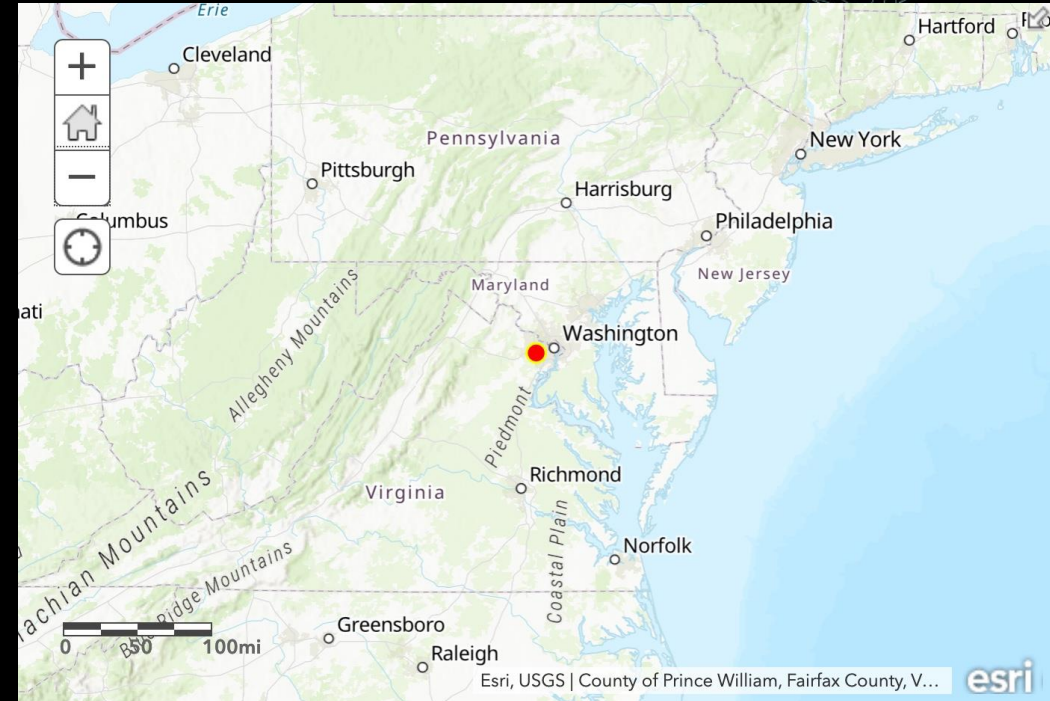
## King Kekaulike High School Pukalani, Hawaii, USA



# Jason Smolinski

## High School Science

### Fairfax High School Fairfax, Virginia, USA

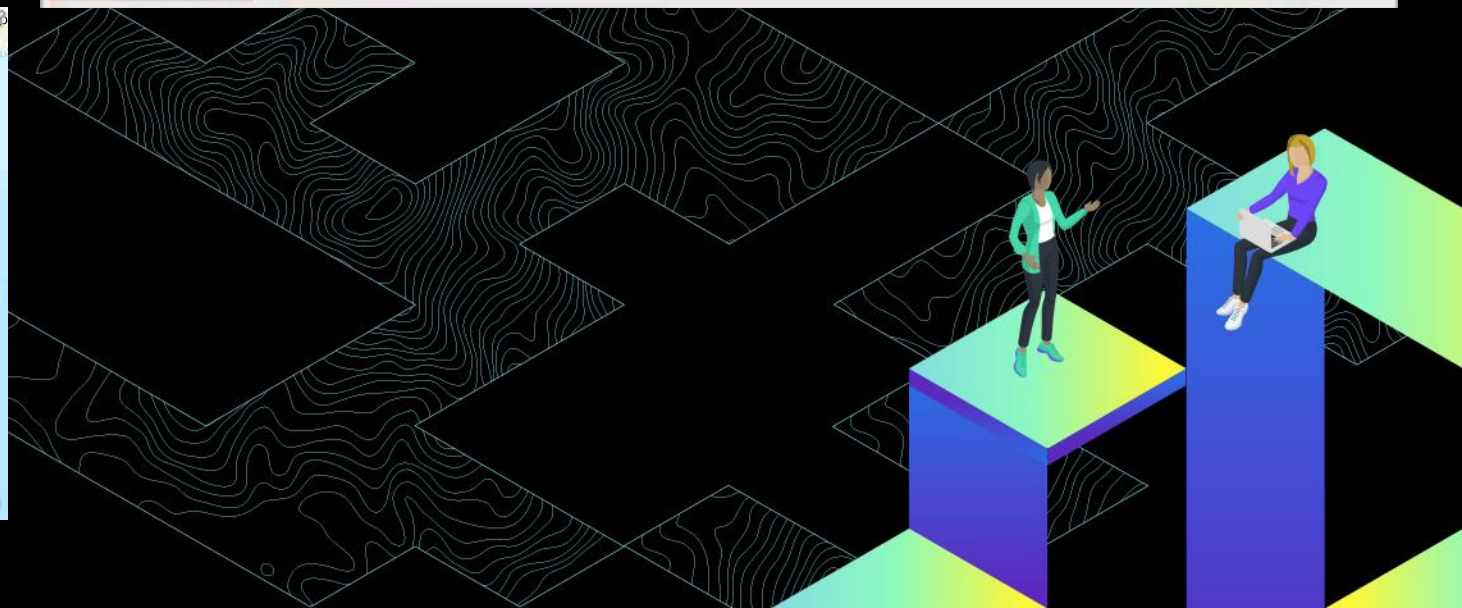
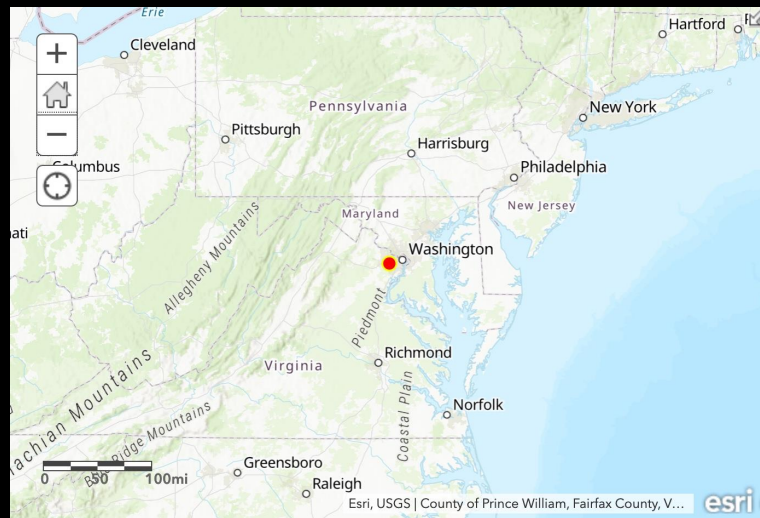
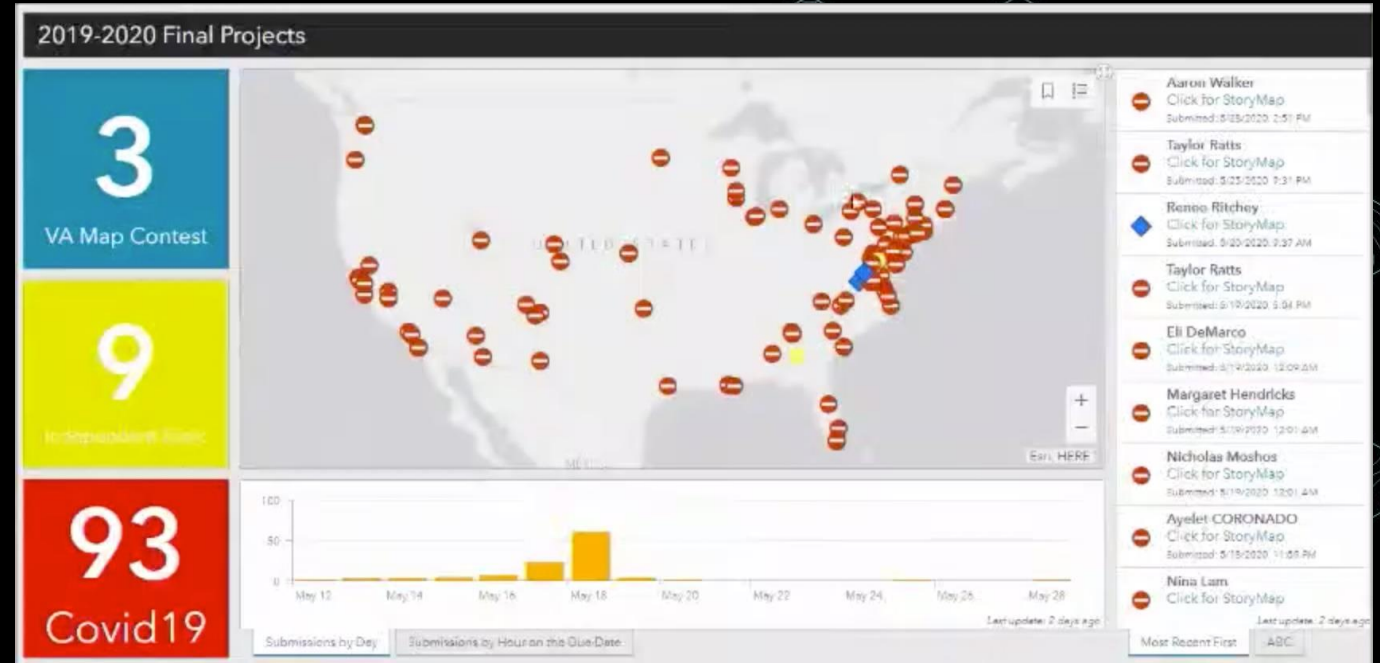




# Jason Smolinski

High School  
Science

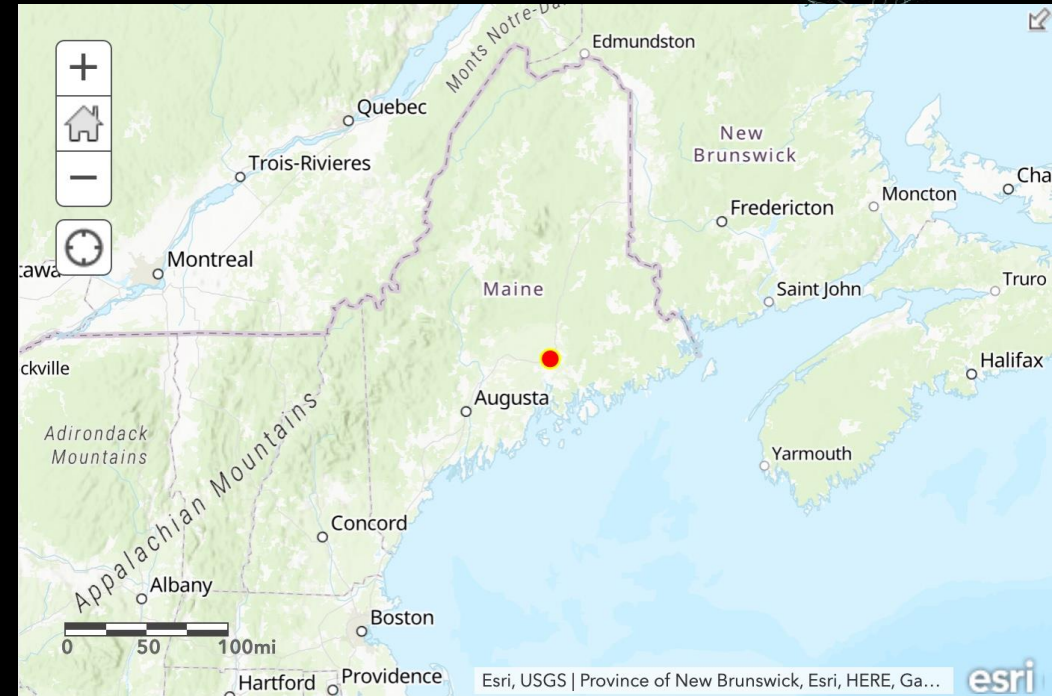
Fairfax High School  
Fairfax, Virginia, USA



# Brandi LeRoy

## High School Geography

### Bangor High School Bangor, Maine, USA





- 1 When the World Turned Upside Down
- 2 200 Students 3 Buses
- 3 WELCOME TO THE RESCUE
- 4

When the World Turned Upside Down

GIS in the time of Covid

Click to add speaker notes

Themes

In this presentation

Click to add title  
Click to add subtitle

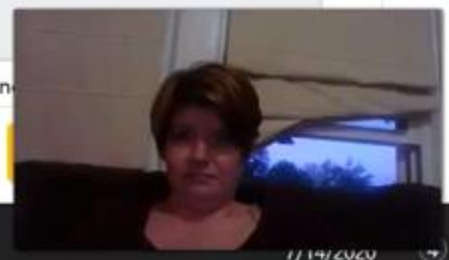
Simple Light

Click to add title  
Click to add subtitle

Simple Dark

Click to add title  
Click to add subtitle

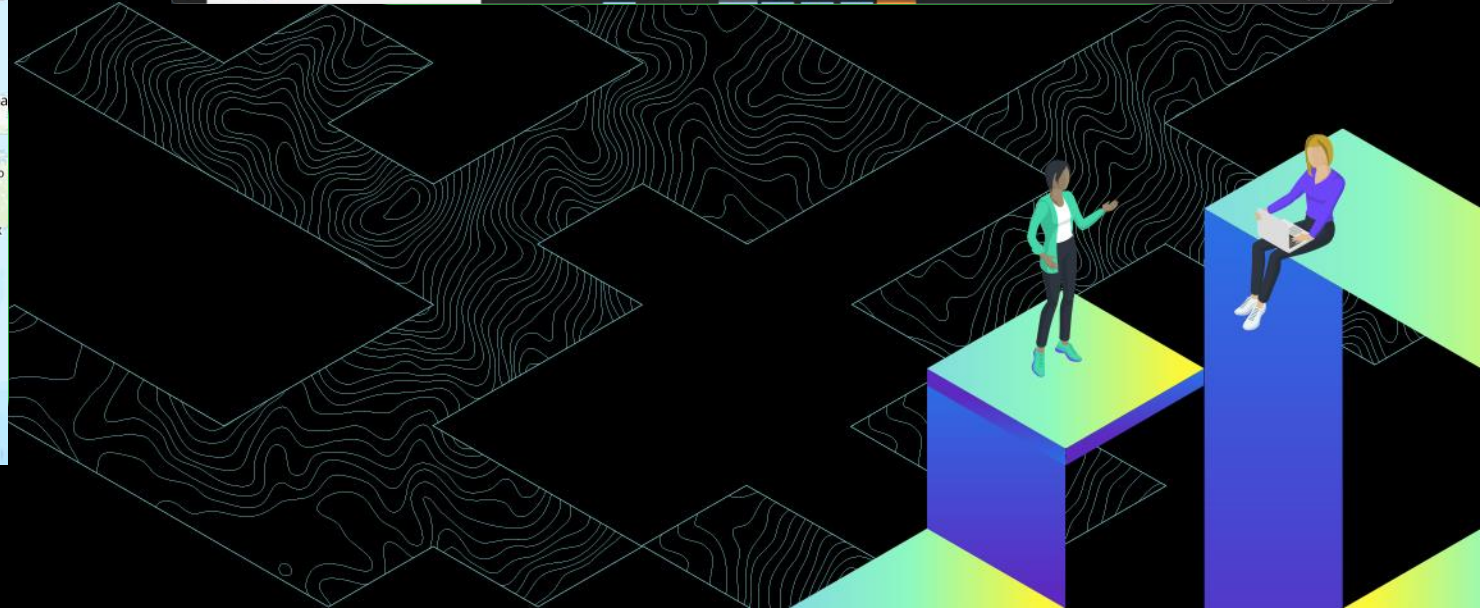
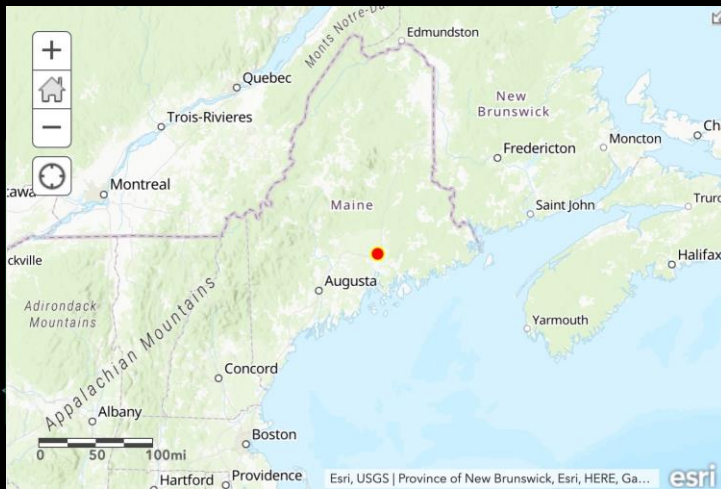
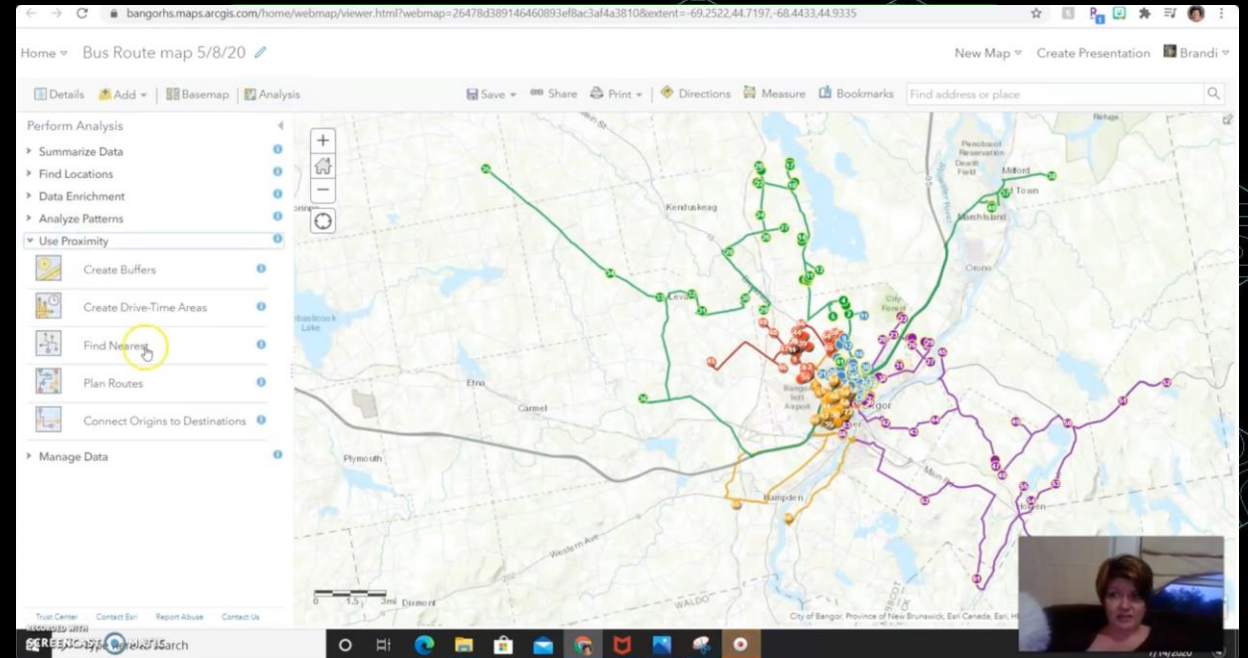
Streamlin



# Brandi LeRoy

## High School Geography

### Bangor High School Bangor, Maine, USA

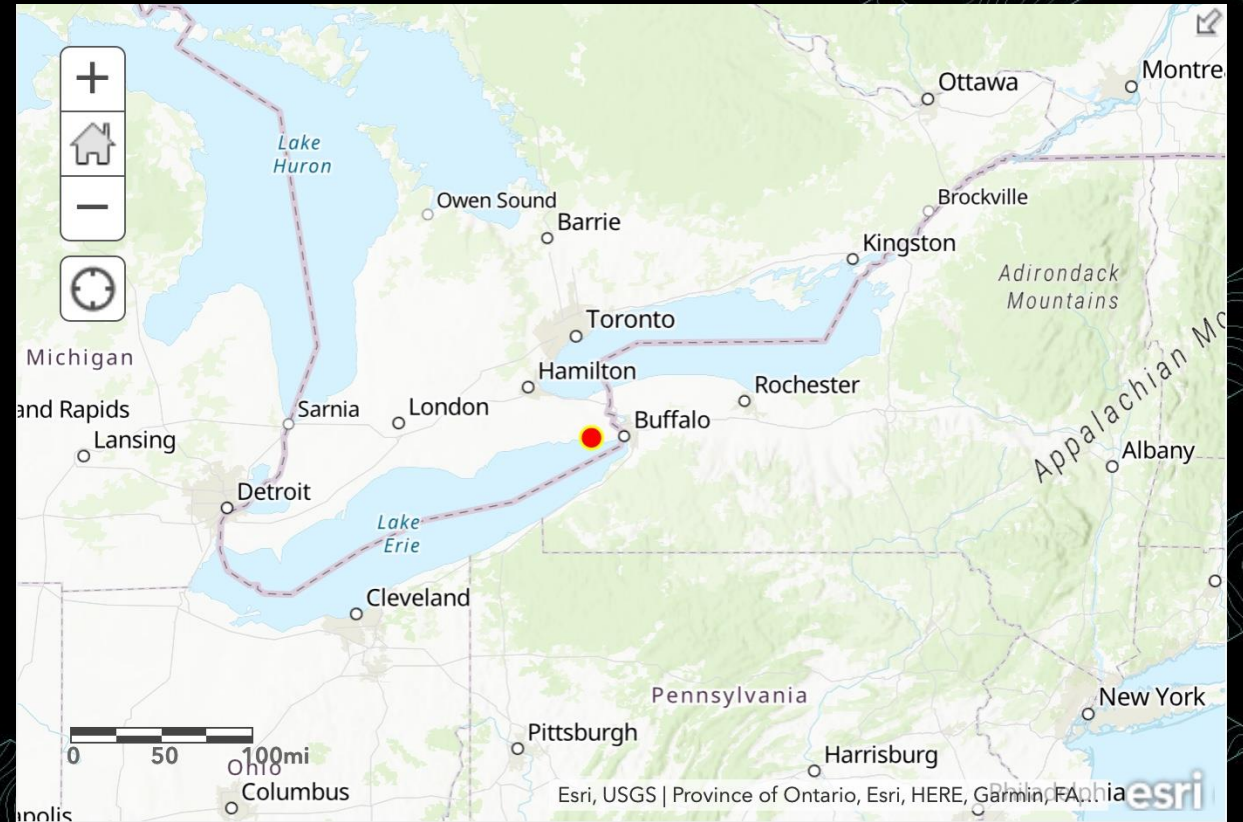




# Jonathan Fletcher

## High School Geography

### Port Colborne Secondary Port Colborne, ON, Canada



By Industry By Product By Type **Blog**

Home > Education & Research > July's GIS Ambassador: Jonathan Fletcher

## July's GIS Ambassador: Jonathan Fletcher

🕒 JULY 16, 2020 👤 ANGELA ALEXANDER



Jonathan Fletcher from Port Colborne, Ontario is July's GIS Ambassador of the month. Discover how this teacher has been supporting GIS use in K-12 education in and out of the classroom.

July's GIS Ambassador of the month is Jonathan Fletcher, a geography teacher from Port Colborne High School in Port Colborne, Ontario. He's been keeping his students engaged in learning using geographic information systems (GIS) for over 10 years. This blog post will highlight the work he's done in the last year to provide his students with a range of learning opportunities.

Jonathan's students get to do "hands-on" geography in the classroom using ArcGIS. They do not explore Atlas: mapping projects that support local organizations and that supported an education centre in Niagara.



**OAGEE / AEGEO**

*Ontario Association for Geographic and Environmental Education/  
Association pour l'enseignement de la géographie et de l'environnement en  
Ontario: Leading the way in supporting teachers since 1948*

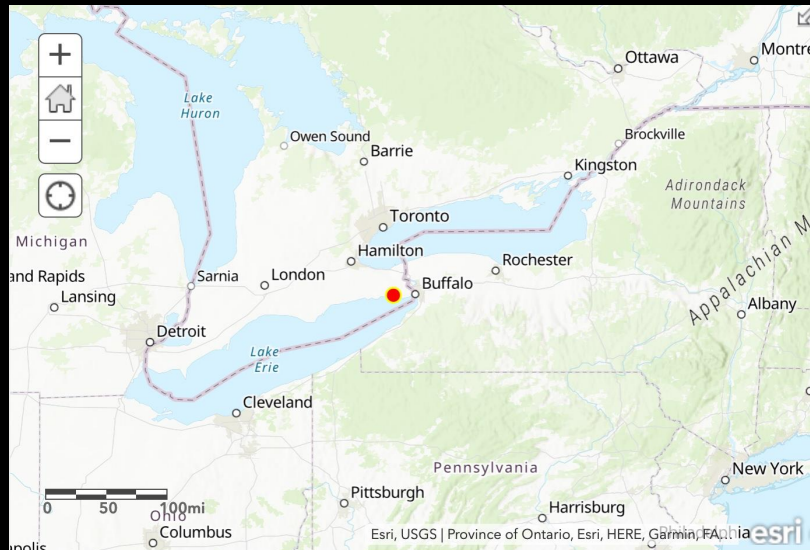
[www.oagee.org](http://www.oagee.org)



# Jonathan Fletcher

## High School Geography

### Port Colborne Secondary Port Colborne, ON, Canada

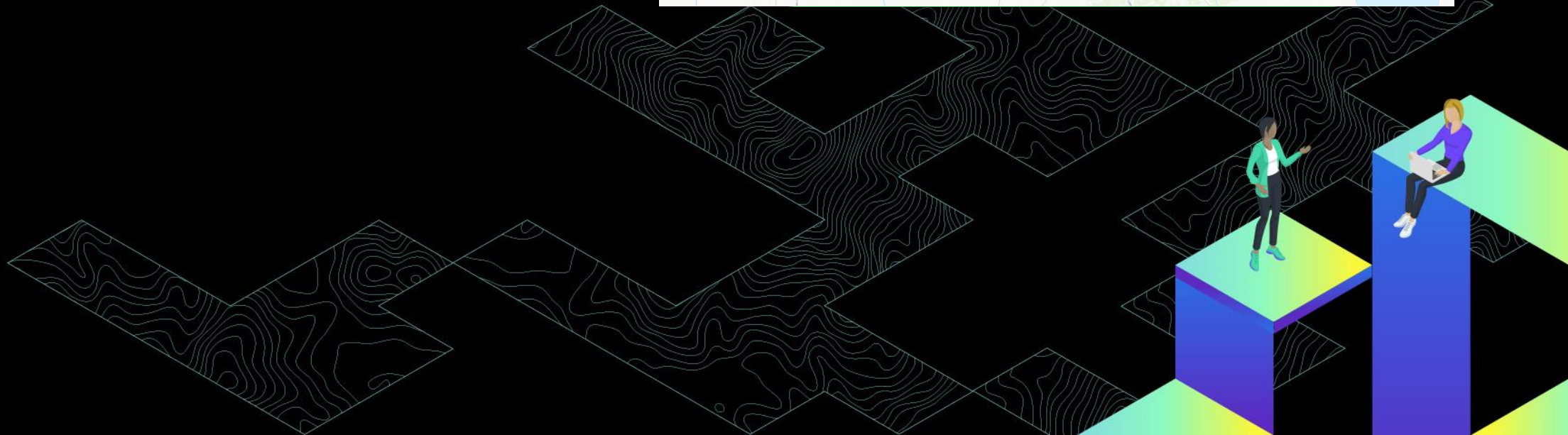
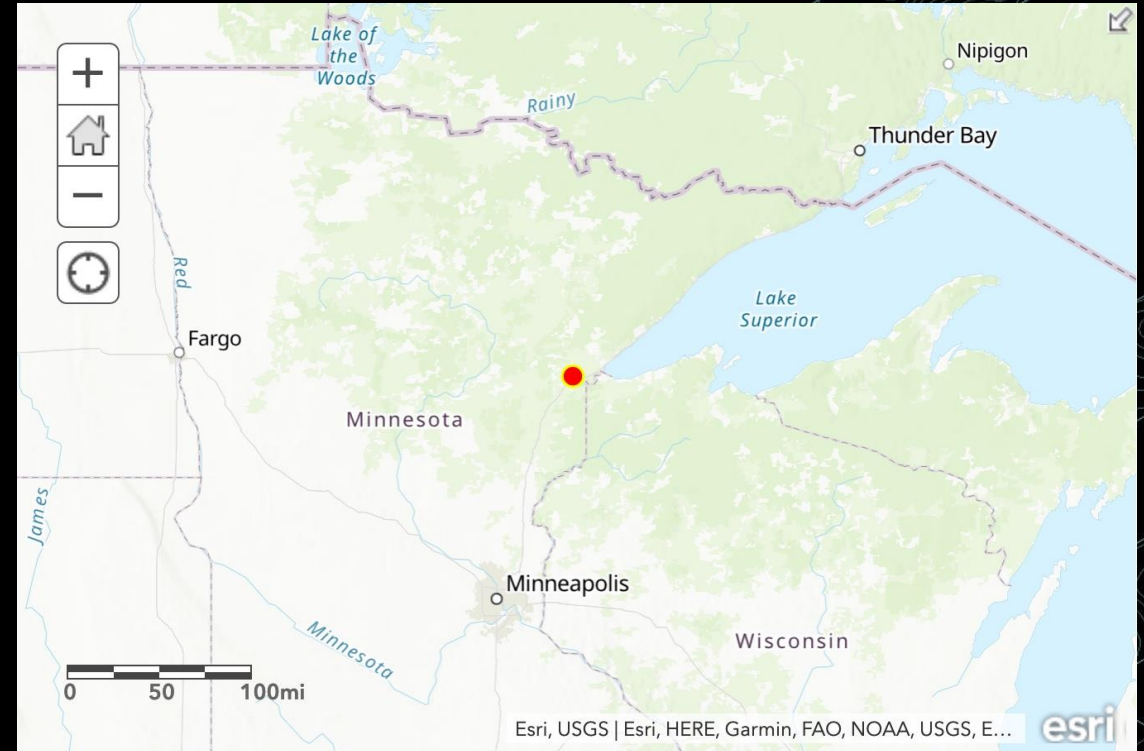




**Matt Winbigler**

**Middle School  
Science**

**Cloquet High School  
Cloquet, Minnesota, USA**







Cloquet, MN, USA



# Cloquet High School Science GIS

|| Screencastify - Screen Video Recorder is sharing your screen. Stop sharing Hide

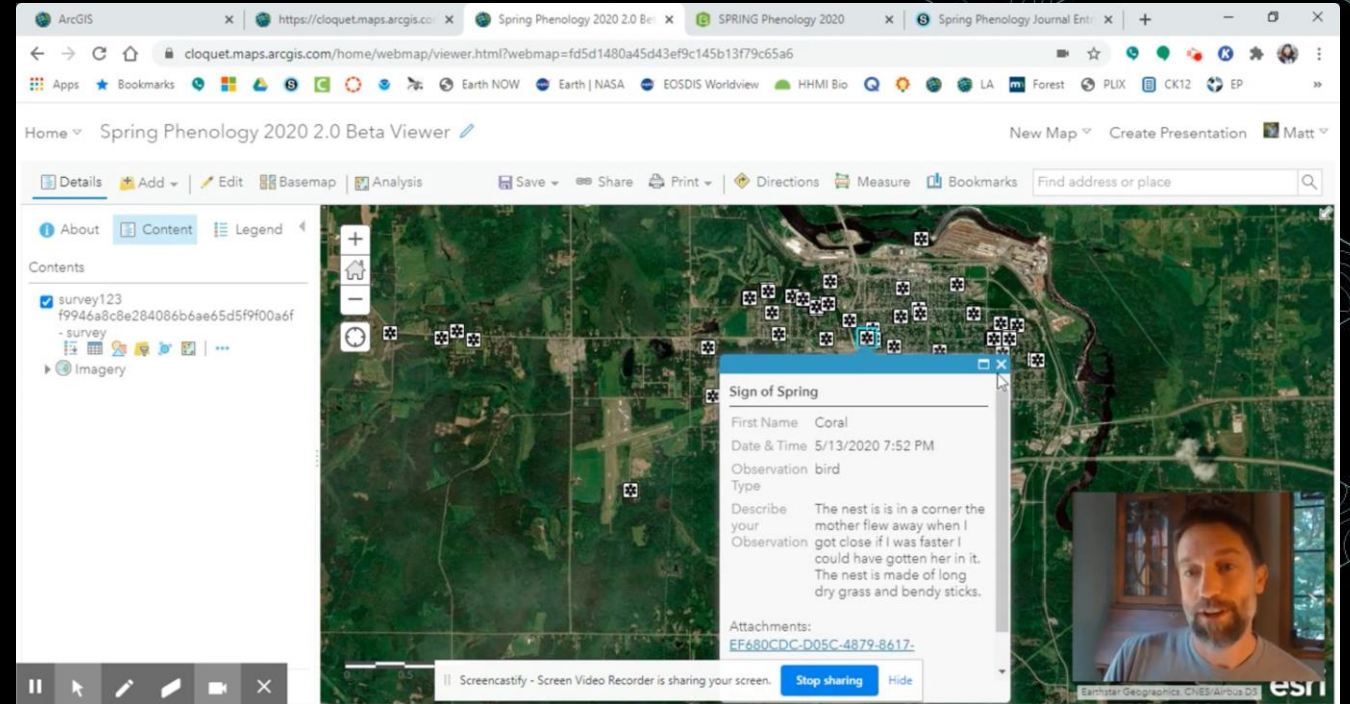
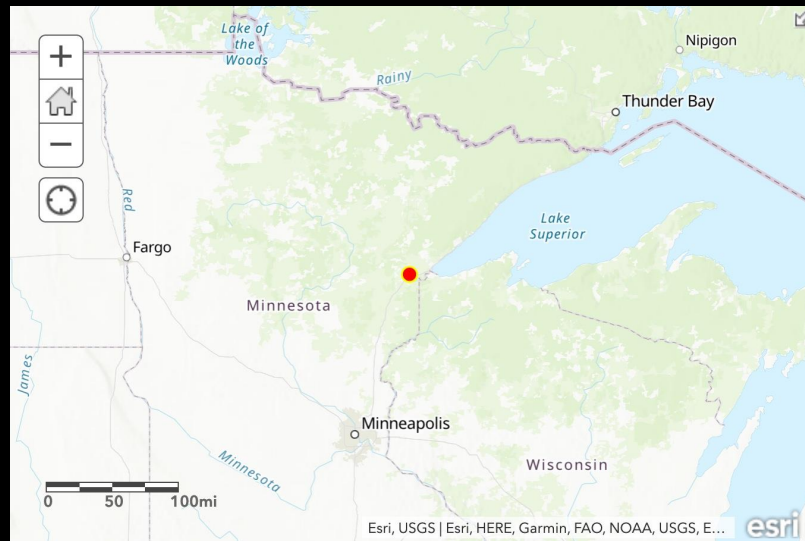




# Matt Winbigler

## Middle School Science

### Cloquet High School Cloquet, Minnesota, USA





# Lauren Sinclair

## Middle School Technology

### French-American Int'l School Portland, Oregon, USA



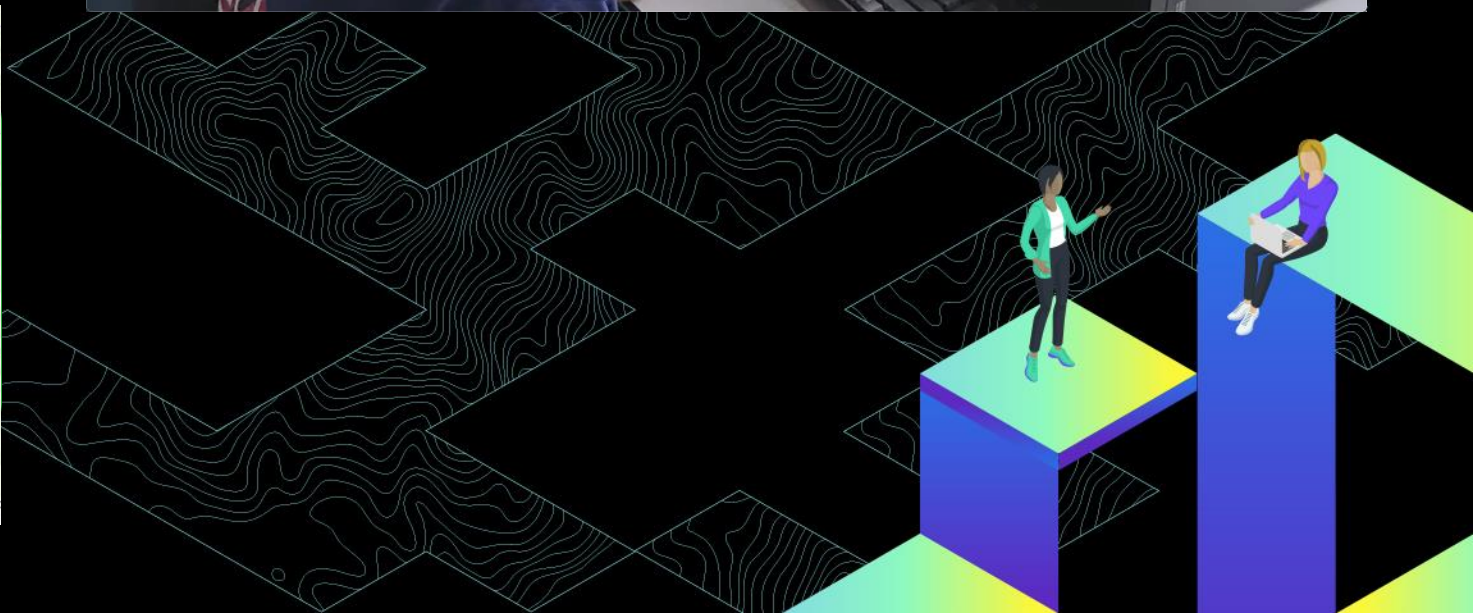




# Lauren Sinclair

## Middle School Technology

### French-American Int'l School Portland, Oregon, USA

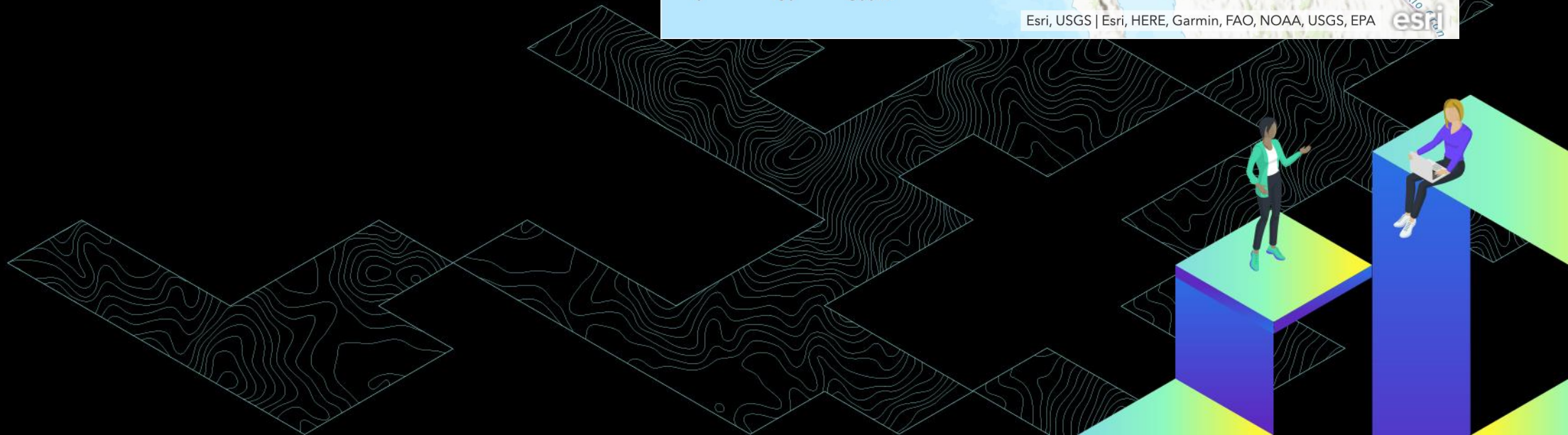




# Jim Bentley

## Grade 5 Science

### Foulks Ranch Elementary Sch. Elk Grove, California, USA

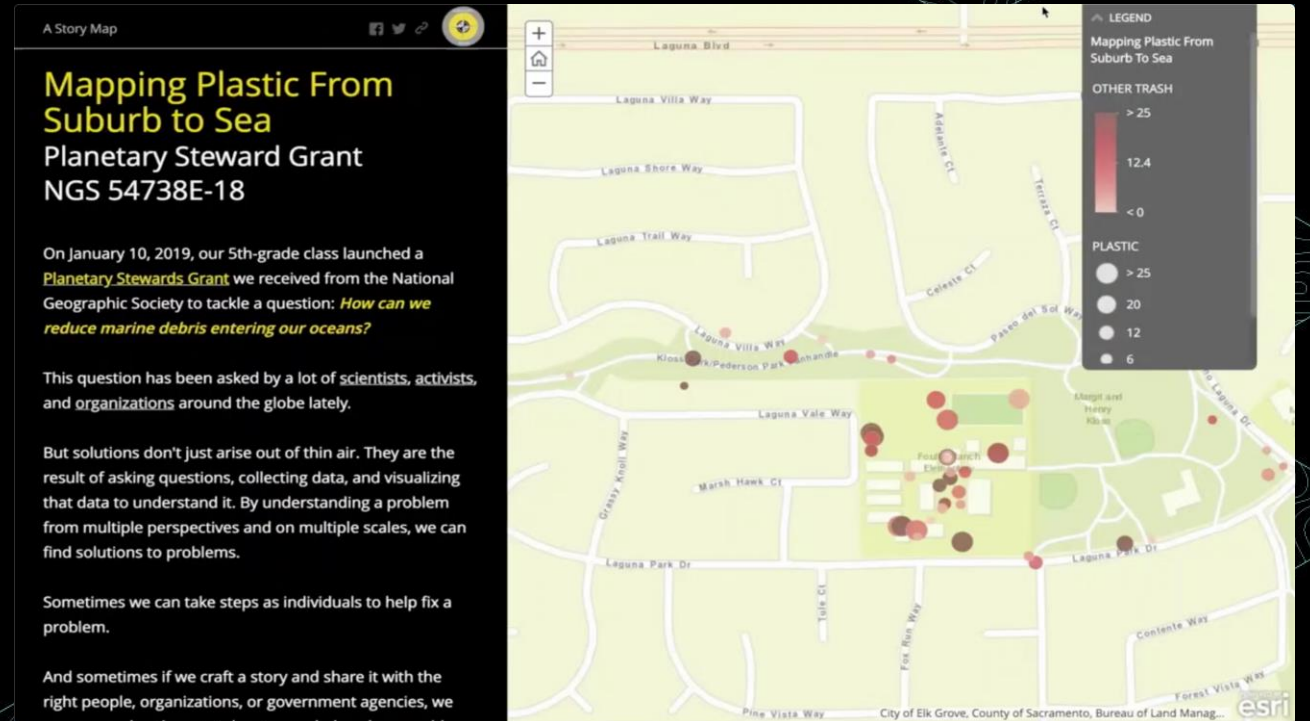




# Jim Bentley

## Grade 5 Science

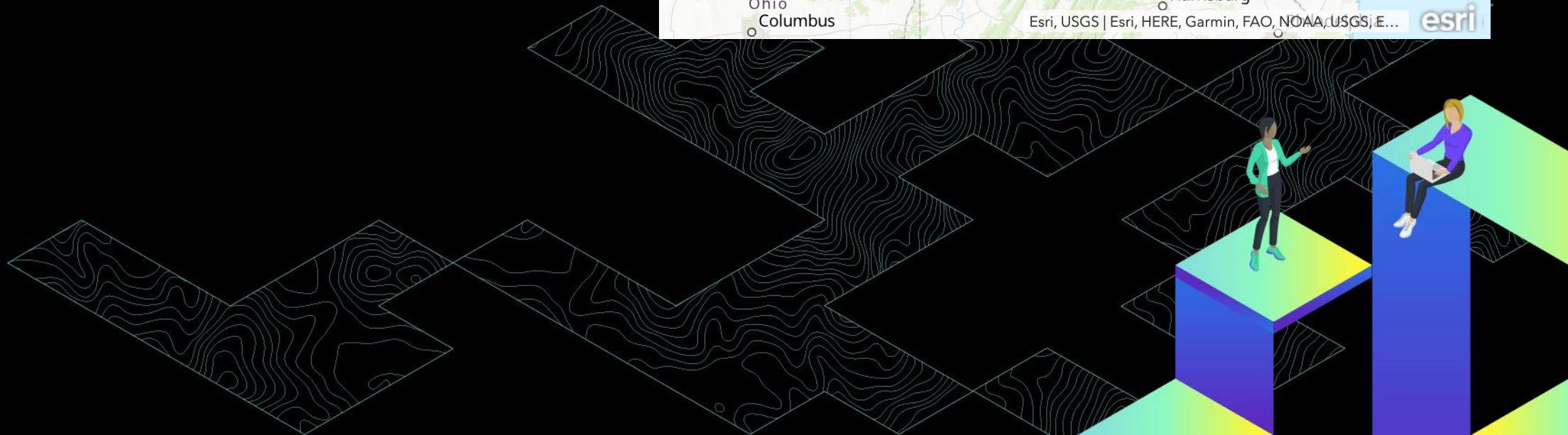
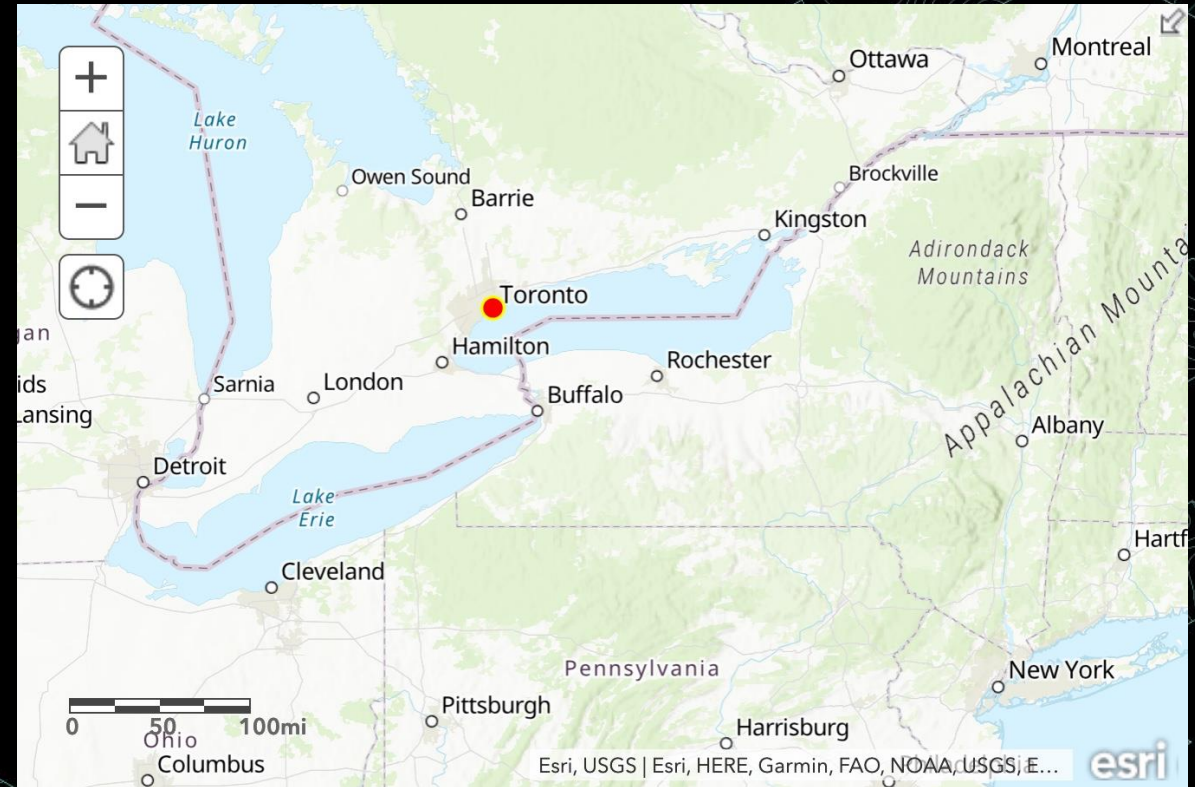
### Foulks Ranch Elementary Sch. Elk Grove, California, USA



# Tony Cushman

Grade 3  
Everything

Rolph Road Primary School  
Toronto, Ontario, Canada





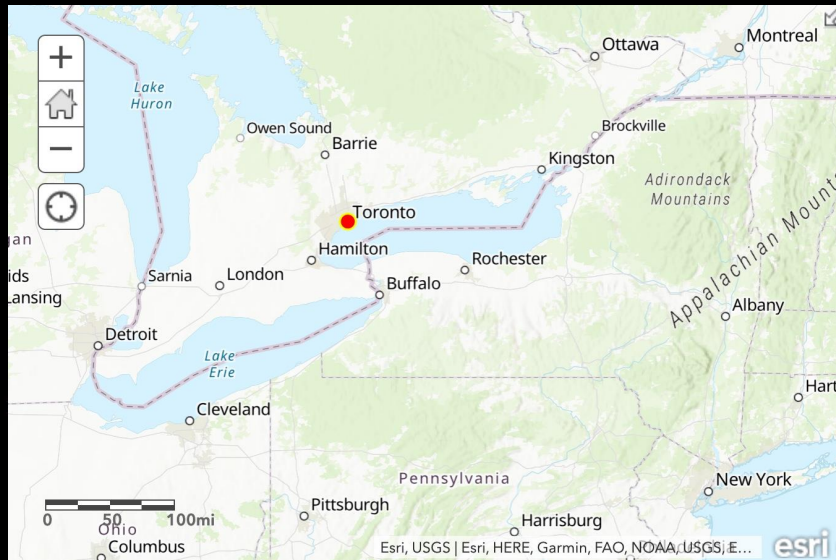




# Tony Cushman


## Grade 3 Everything

### Rolph Road Primary School Toronto, Ontario, Canada





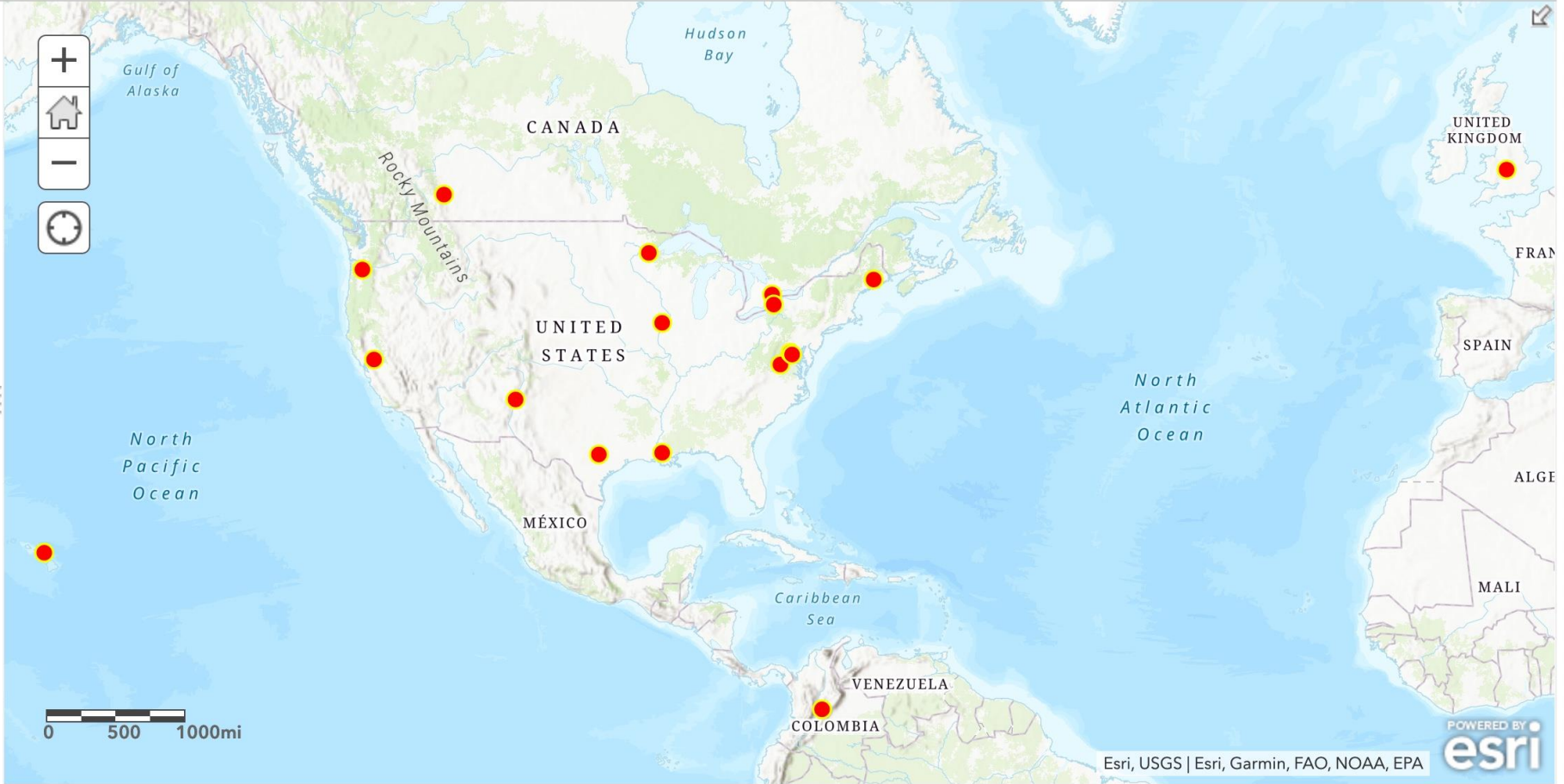
# Thanks to these and ALL who make differences in kids' lives!

Home ▾ Map of K12GIS EdUC2020 Teacher Stories [✎](#) New Map Create Presentation  Charlie ▾

[Details](#) [Add](#) ▾ | [Basemap](#) | [Analysis](#) [Save](#) ▾ [Share](#) [Print](#) ▾ [Directions](#) [Measure](#) [Bookmarks](#)

**Contents**

- K12GIS EdUC2020 Teacher Stories stakeholder
- Topographic



The map displays the following geographical features and labels:

- Regions:** CANADA, UNITED STATES, MÉXICO, UNITED KINGDOM, SPAIN, ALGERIA, MALI, VENEZUELA, COLOMBIA.
- Oceans/Seas:** North Pacific Ocean, Gulf of Alaska, Hudson Bay, North Atlantic Ocean, Caribbean Sea.
- Mountains:** Rocky Mountains.
- Scale:** 0, 500, 1000mi
- Map Tools:** Zoom in (+), Home, Zoom out (-), Refresh.
- Footer:** Trust Center, Contact Esri, Report Abuse, Contact Us. Powered by **esri**. Esri, USGS | Esri, Garmin, FAO, NOAA, EPA.



esri®

THE  
SCIENCE  
OF  
WHERE®