



# Leveraging ArcGIS Web Apps

Calvin Kwon (Esri)

Elizabeth Todd (The National Audubon Society)

2020 ESRI FEDERAL GIS CONFERENCE | WASHINGTON, D.C.





# FEMA Priority Operations Support Tool (POST) Dashboard

## Municipality Earthquake Exposure

### POST Exposure Results

**Ponce, PR**

Exposed Population: 108964  
Exposed Housing Units: 49852

**Yauco, PR**

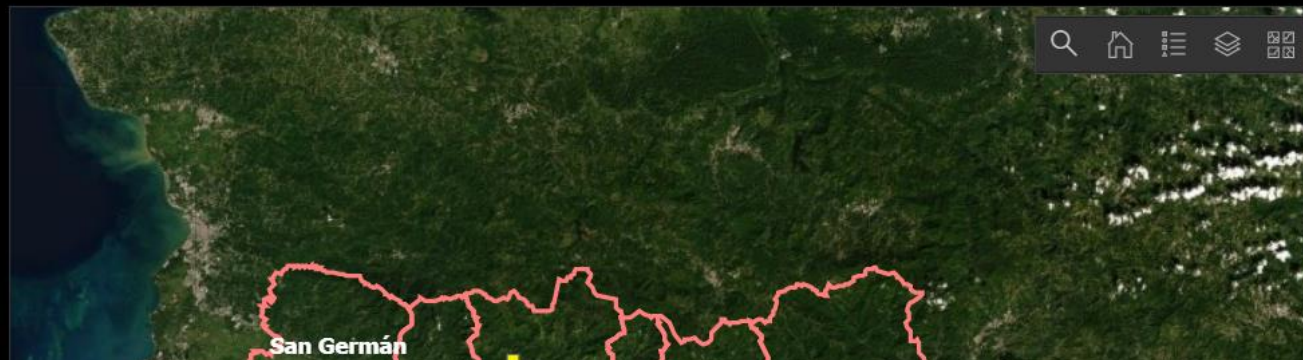
Exposed Population: 26659  
Exposed Housing Units: 1183

**Sabana Grande, PR**

Exposed Population: 13974  
Exposed Housing Units: 6274

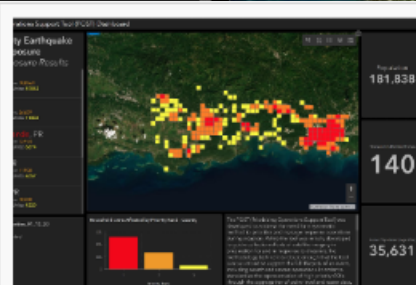
**Guánica, PR**

Exposed Population: 11598  
Exposed Housing Units: 6057



Population  
**181,838**

Housing Units  
**82,613**



## Prioritizing Operations Support Tool (POST) Dashboard

Dashboard by FEMA

FEMA's POST layer  
population, building

**Created: Jan 8, 2020**

for a given event based on social vulnerability,

Created: Jan 8, 2020 Updated: Jan 15, 2020 View Count: 399

Earthstar Geographics

## Household Units Affected by Priority Rank - County



The POST (Prioritizing Operations Support Tool) was developed to address the need for a systematic method to prioritize and manage response operations during disasters. While the tool was initially developed to guide collection efforts of satellite imagery in preparation for and in response to disasters, the methodology behind it is robust enough that the tool can be utilized to support the full lifecycle of an event, including search and rescue operations. In order to standardize the

Senior Population (Age 65+)  
**35,631**

House Units with Age under 18  
**63,085**

PR\_Boundary\_POST\_1122020

PR\_EQ\_USGS\_Shakemap\_V4\_Jan07\_2020 -  
Epicenter

6.4 Magnitude, Depth: 10.0 km



# Puerto Rico Earthquake

Site Developed by FEMA

Welcome to the Puerto Rico Earthquake hub. We developed this site to help you find all of the apps, maps and data associated with this incident. FEMA and our federal partners use geospatial tools and methods to estimate and measure impacts, which allows all of us to make well informed and timely decisions.

Cover Image by the US Geological Survey.

## See Data in Dashboards

Select a dashboard to visualize and understand information from FEMA and our partners.





# Topics

- **Why Apps?**
- **Building and Configuring Apps**
- **Leveraging Web Apps at the National Audubon Society**

# Why Apps?

Apps are what gives your data purpose.

Apps makes you more focused and productive.

Apps are how organizations make data-driven decisions.



# Different Flavors of Apps

## Desktop Apps

Installation on a  
Desktop Workstation

ArcGIS Pro

Drone2Map

Maps for Office

Esri CityEngine

...

## Mobile Apps

Installation on a  
Smartphone

Survey123

Collector

Workforce

QuickCapture

...

## Web Apps

No Installation –  
Requires Web Browser

Configurable Templates

Web AppBuilder

Ops Dashboard

StoryMaps

...



# Configurable Apps

*Configure, assemble & build*

**Configurable Apps**  
Web AppBuilder for ArcGIS  
Operations Dashboard  
ArcGIS StoryMaps

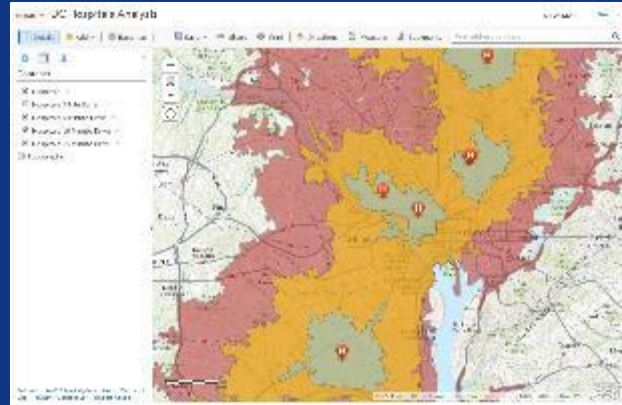


# What are configure apps?

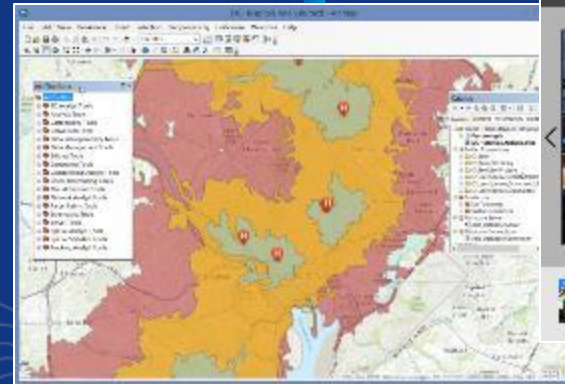
- Designed for you to *configure, assemble, build* – no programming required
- Fastest and easiest way to go from a map to a shareable app
- Hosted apps maintained by Esri in the cloud



# Web maps are the building blocks of web apps



Map Viewer  
(for authoring)

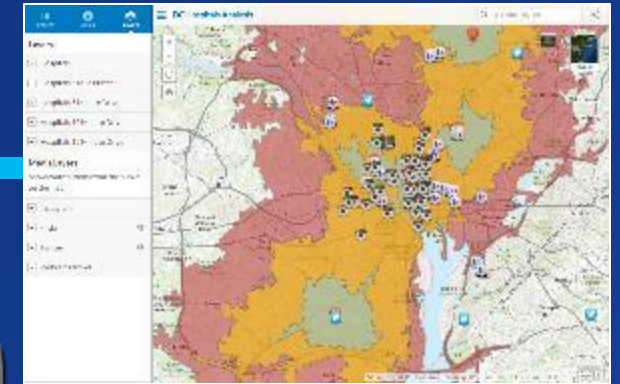


ArcGIS Desktop



Story Maps

Apps for field



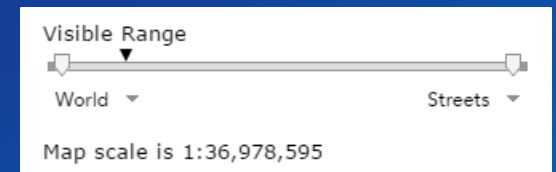
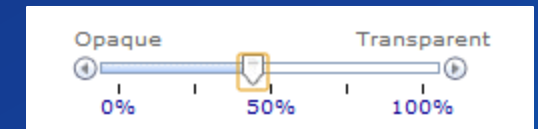
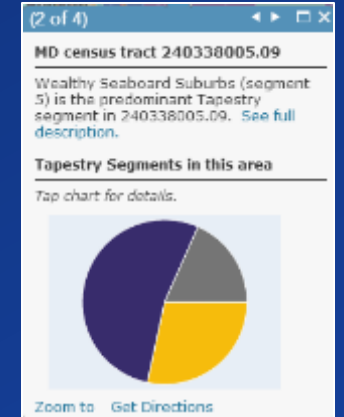
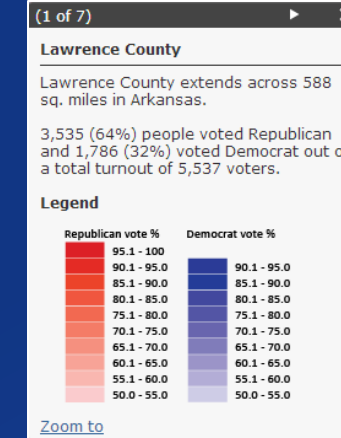
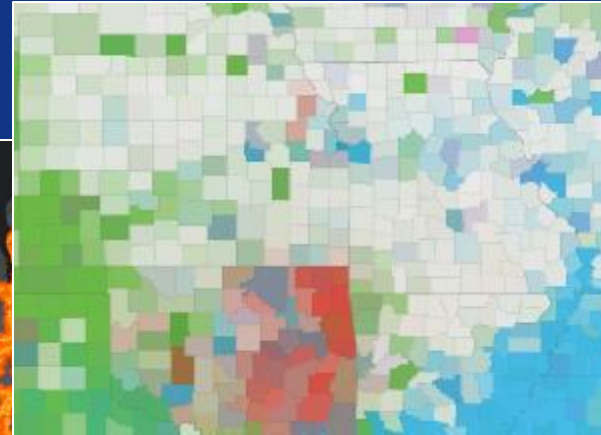
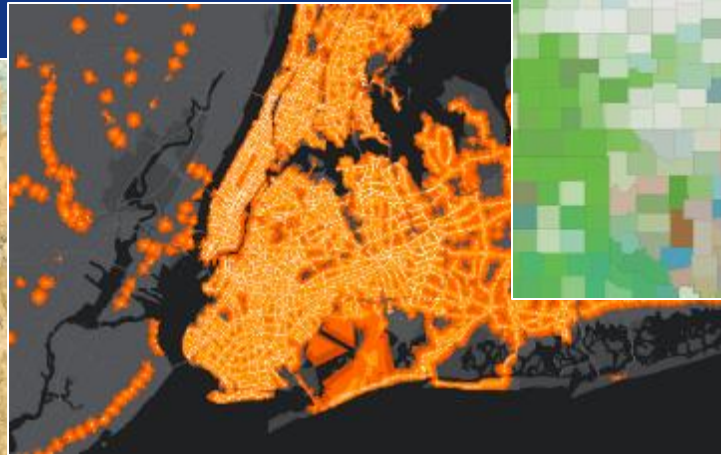
Configurable apps



Devices

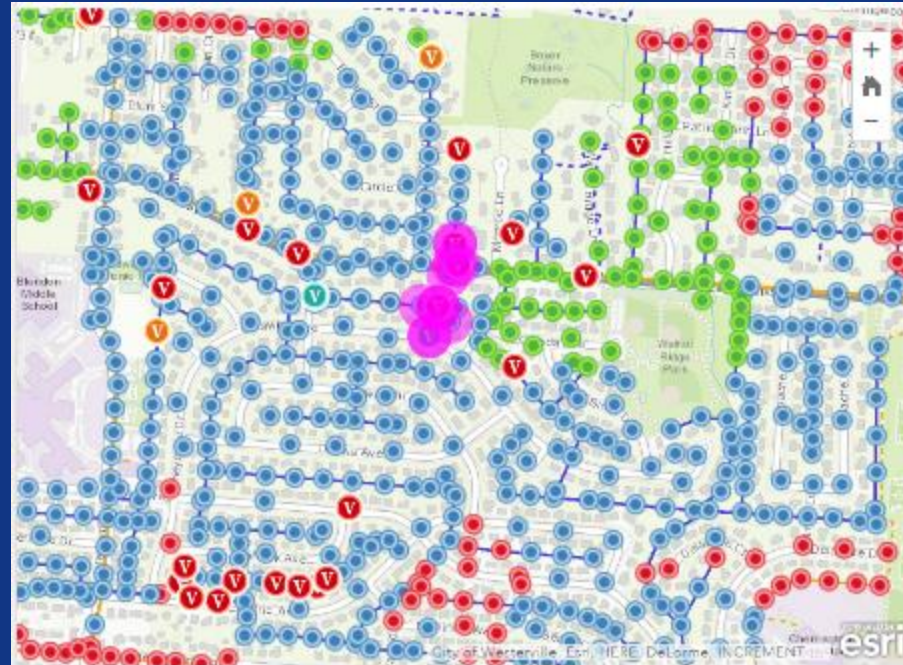
# A great app starts with a great map

- Smart mapping
- Transparency, scale ranges, bookmarks
- Pop-ups
- Performance





# Apps complete the user experience



(Beta)

1. Joint Use - Pole Inspection Dashboard

[Edit](#)
David

Total Violations

39

Severe Violations

26

Status

Status	Count
Work in Progress	1
Missing information	10
Done	28

Selected Violations

V

Pole ID: 220: Severe

Violation: Broken guy wire

Date: 10/22/2015, 7:18 AM

V

Pole ID: 219: Low

Violation: Climbing space violation

Date: 10/21/2015, 6:54 PM

V

Pole ID: 441: Severe

Violation: Broken Pole

Date: 4/30/2015, 4:21 PM

1. Joint Use Survey

Total Poles

7,531

Completed in Last 7 Days

6

Completed in Last 30 Days

2

Assigned - Incomplete

Illegal

Cable

11

Fiber

3

Sign

1

Fine

1

Telco

8

Violation Type

Legend

Joint Use Survey - Violations

V

Severe

V

Medium

V

Low

Joint Use Survey - Poles

V

Assigned

V

Completed

Survey Status

# Where to find configurable apps and builders

- Create a New Web App gallery
- StoryMaps website
- Solutions
  - <https://solutions.arcgis.com>

The screenshot displays the ArcGIS Content Manager interface. The top navigation bar includes links for Home, Gallery, Map, Scene, Groups, Content, and Organization. The 'Content' tab is selected, showing a list of items. The 'My Wonderful Map' item is selected, and its details page is shown. The 'Add Item' button is highlighted with a red box. The 'Create Web App' dropdown menu is open, showing options for 'Configurable Apps', 'Web AppBuilder', and 'Dashboards'. The 'Configurable Apps' option is highlighted with a red box.

Home Gallery Map Scene Groups Content Organization

Content My Content My Favorites My Groups My Organization Living Atlas

My Wonderful Map

Overview Usage Settings

Table Date Modified Filter

Home Save Add Item

Edit Thumbnail

Add to Favorites

Description

Add an in-depth description of the item.

Layers

Activity Locations

World Hillshade

World Topographic Map

Open in Map Viewer

Open in ArcGIS Desktop

Create Presentation

Create Web App

Configurable Apps

Create an app by selecting a focused template and configuring its properties.

Web AppBuilder

Create an app by selecting a theme and choosing from a library of widgets.

Dashboards

Create a dashboard with data visualizations that provide key insights.

Modified

Jan 2, 2020

Jan 2, 2020

Jan 2, 2020

Jan 2, 2020

Jan 2, 2020

Jan 2, 2020

Jan 2, 2020

Dec 26, 2019

Dec 26, 2019

Dec 16, 2019



# Delete protection

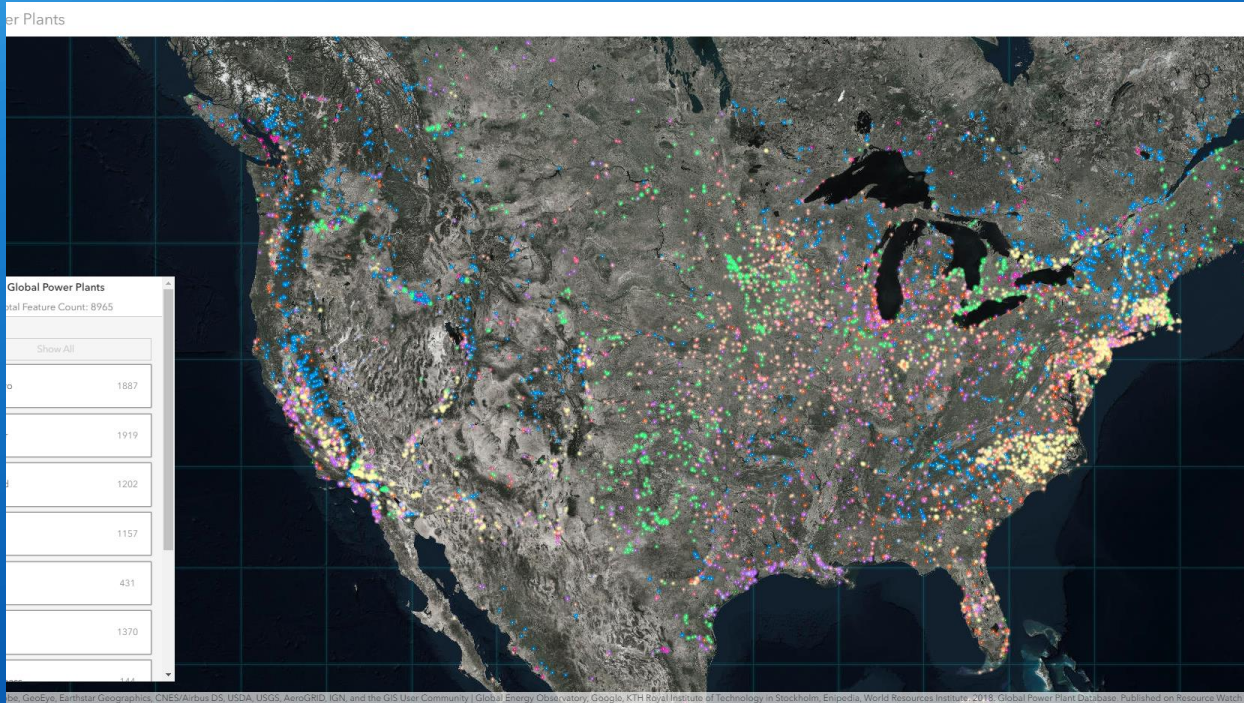
- Ensures maps, apps and related items don't vanish
- Item Settings tab



## Delete Protection

☒ Prevent this item from being accidentally deleted.

# Creating an App



# Create apps with a variety of content

- The gallery of 42 configurable app templates allows you to build a simple, focused experience for a variety of geospatial content.
- Build apps with different types of content:
  - Web Maps (2D)
  - Web Scenes (3D)
  - Groups





# What do you want to do?

- Build a story map
- Collect/edit data
- Compare maps/layers
- Display a Scene
- Explore/summarize data
- Interpret Imagery
- Make a gallery
- Map social media
- Provide local information
- Route/get directions
- Showcase a map

## Create a New Web App

What do you want to do?

Show All

Build a Story Map

Collect/Edit Data

Compare Maps/Layers

Explore/Summarize Data

Map Social Media

Provide Local Information

Route/Get Directions

Showcase a Map

AppBuilder

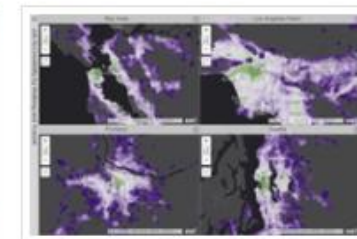
Operations Dashboard

Select a configurable app. ?

Search



Basic Viewer



Compare Analysis



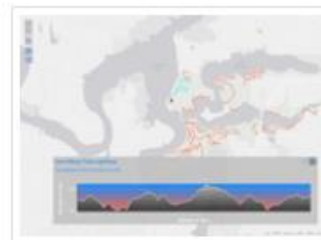
Crowdsourcing Polling



Directions



Edit

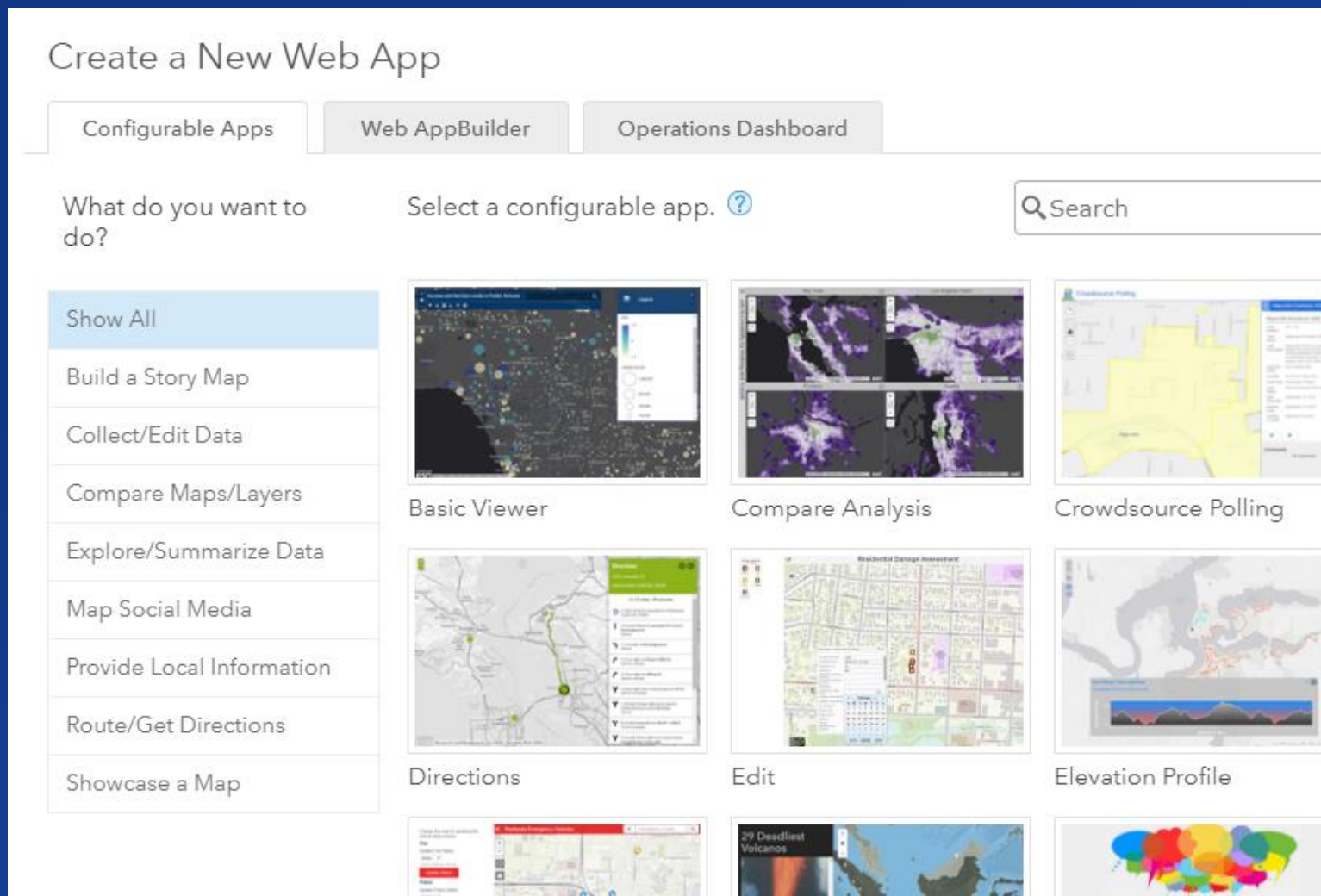


Elevation Profile



# Some apps and tools have map requirements

- **Bookmarks**
- **Filter**
- **Editable feature layer**
- **Attributes**
- **Attachments**
- **Others...**







# Web AppBuilder

*Configure your custom app experience*

*Configurable Apps*  
**Web AppBuilder for ArcGIS**  
*Operations Dashboard*  
*ArcGIS StoryMaps*

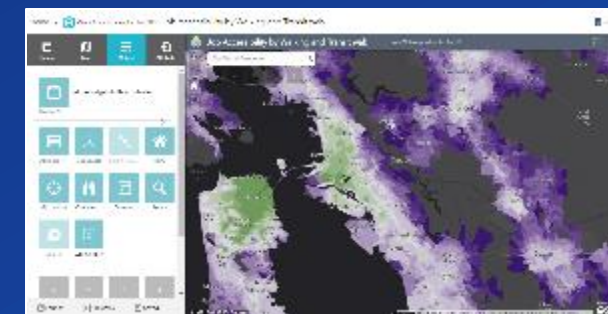
# Web AppBuilder for ArcGIS



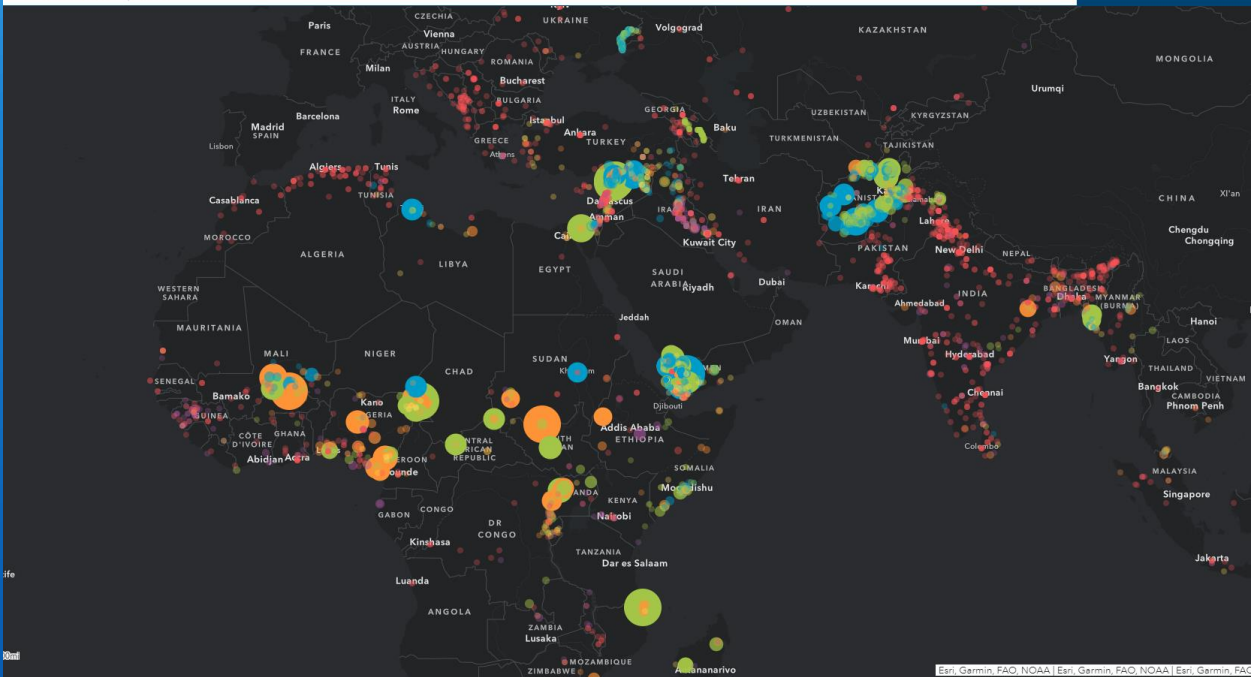
- Assemble an application using a theme, layout, & configurable widgets
- Interactive WYSIWYG experience
- Supports 2D and 3D data
- Integrated with ArcGIS Online and ArcGIS Enterprise
- **Dev Edition for Web AppBuilder**
  - For extensibility
  - ArcGIS Enterprise only



Widgets



Armed Conflict Explorer



# Web AppBuilder



# Operations Dashboard

*Monitor activities & KPIs*

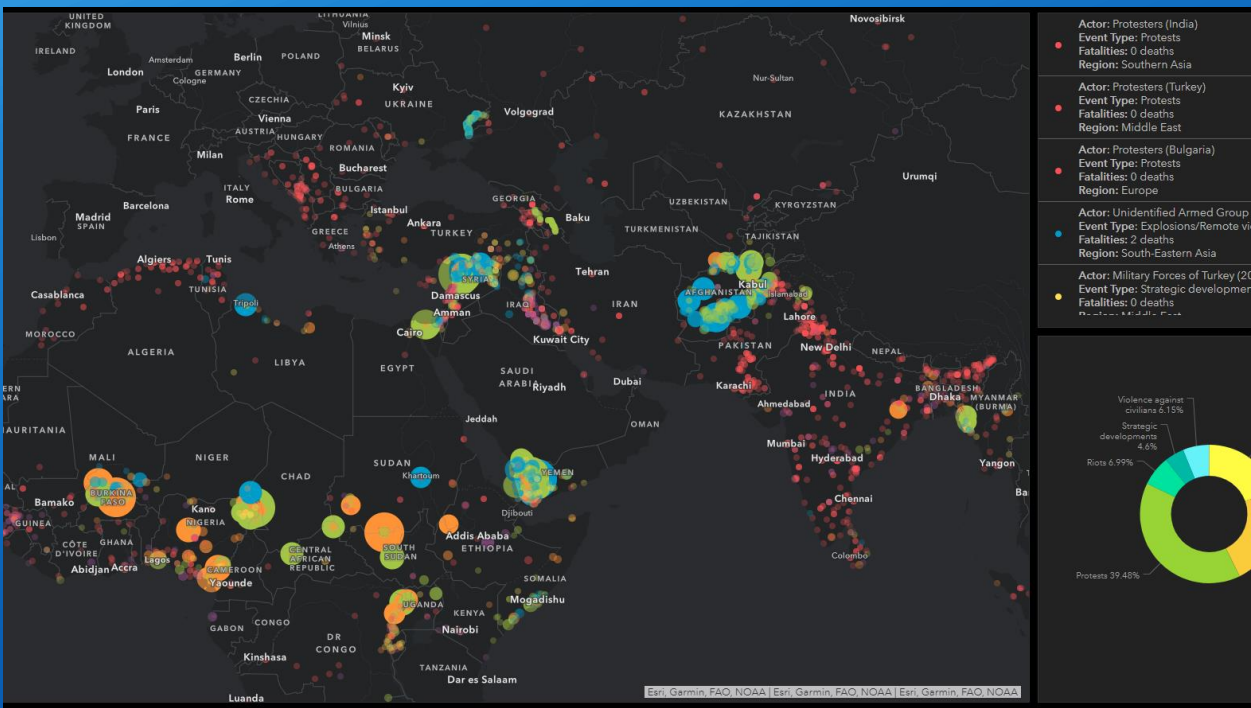
*Configurable Apps*  
*Web AppBuilder for ArcGIS*  
**Operations Dashboard**  
*ArcGIS StoryMaps*

# Operations Dashboard for ArcGIS



- Monitor assets, events, or activities for **'at-a-glance'** decision making
  - Provides key insights to your data on a single screen
  - Includes many data visualization elements
- Web browser-based app
  - Works on desktops, tablets, and smart phones
- Integrated with ArcGIS Online and ArcGIS Enterprise (10.6 and later)
- Will support Arcade (March 2020)





# Operations Dashboard



# ArcGIS StoryMaps

*Classics & the new StoryMaps*

*Configurable Apps*  
*Web AppBuilder for ArcGIS*  
*Operations Dashboard*  
**ArcGIS StoryMaps**

# Esri Story Maps and ArcGIS StoryMaps

- Esri Story Maps (classic)
  - Multiple builders to choose from
- ArcGIS StoryMaps (new)
  - The next generation Esri Story Maps
  - Single builder experience



# Esri Story Maps (Classic)



MAP TOUR



MAP JOURNAL



CASCADE



MAP SERIES



SHORTLIST



SWIPE/SPYGLASS



BASIC

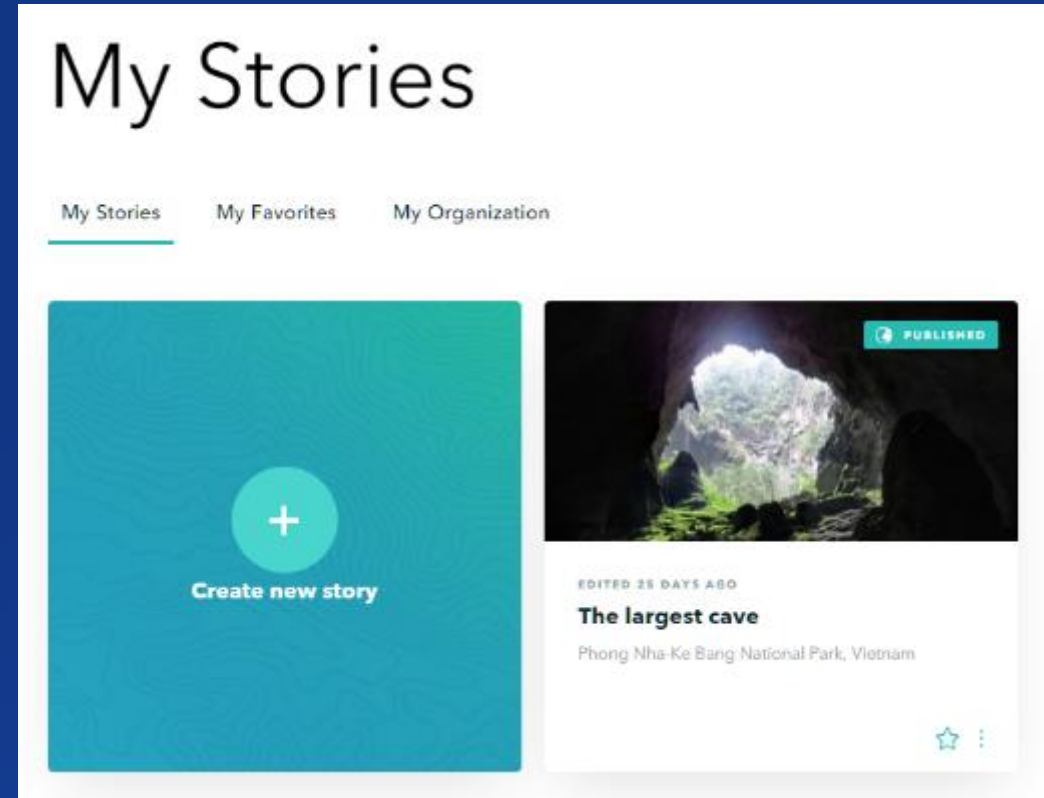


[storymaps-classic.arcgis.com/en/](https://storymaps-classic.arcgis.com/en/)



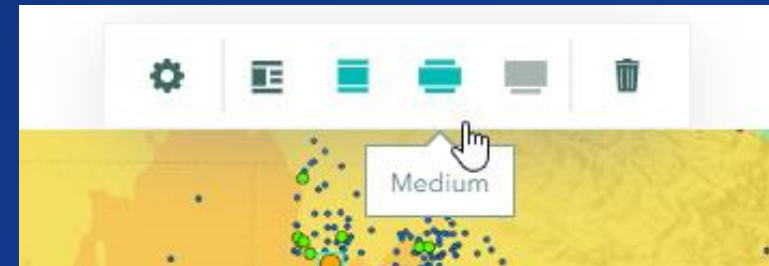
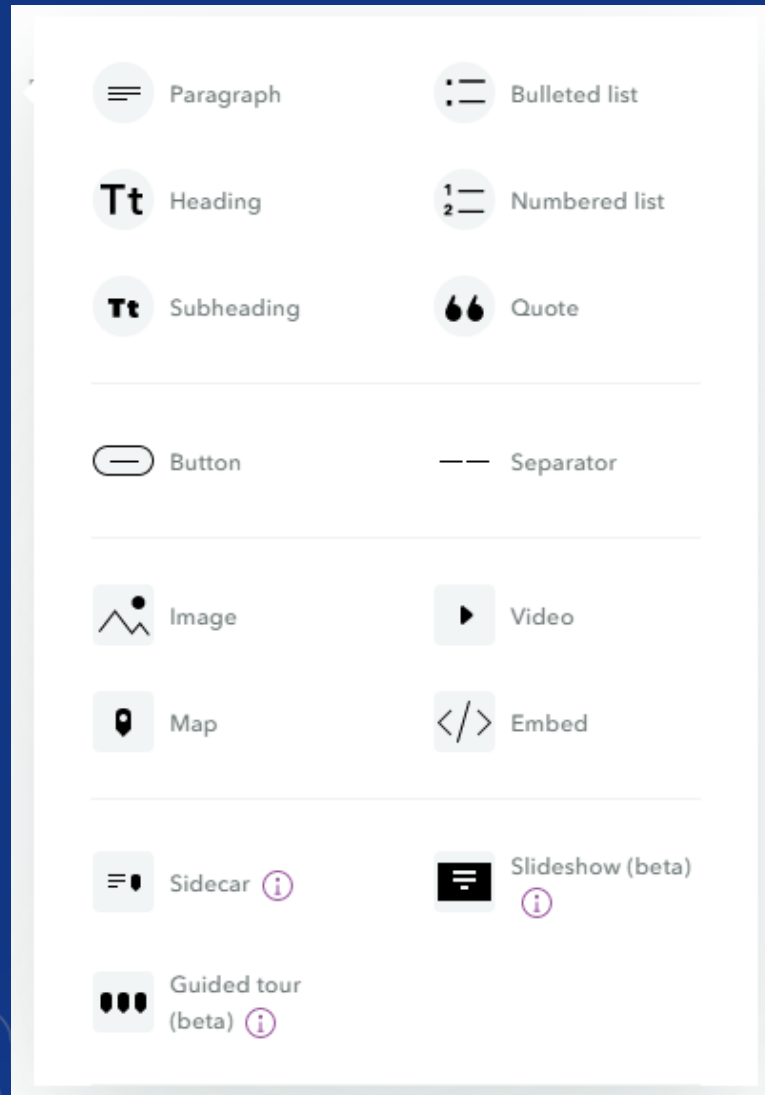
# ArcGIS StoryMaps (New)

- One builder
- Theme-based
- **Express maps** (simple mapmaking)
- New publishing workflow
- New StoryMap item in Contents
- New Storytelling User Type



 <https://storymaps.arcgis.com>

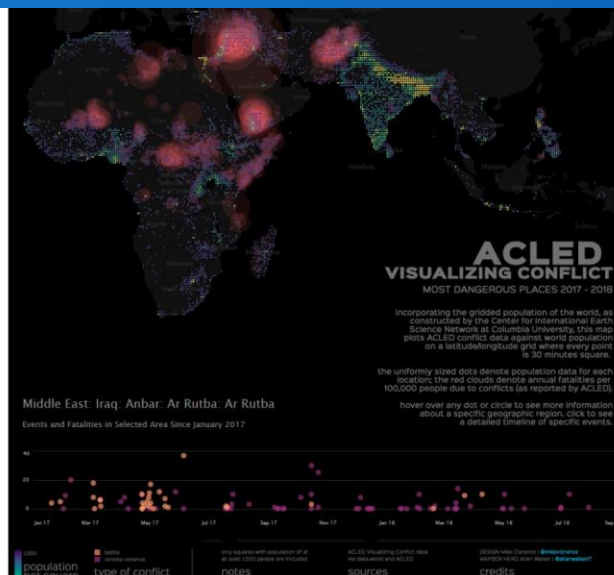
# Content blocks



# Armed Conflict Location & Event Data

Visualizing Impact of Violence across the World

Calvin Kwon | Draft



# ArcGIS StoryMaps



# Web Apps at Audubon

*Elizabeth Todd, Dangermond Fellow*



# Summary

Web apps help you to make data-driven decisions.

There are dozens of configurable apps to choose from.

Leading organizations are modernizing their workflows with web apps.

Questions?



# ArcGIS Security Update – HTTPS Only



- **Esri is committed to ensuring your content is secure**
  - TLS 1.2 implemented in 2019
  - HTTPS Only / HSTS to be enforced *September 15, 2020*
- **What does this mean for you?**
  - After 9/15/20 all HTTP requests to ArcGIS Online will be redirected to HTTPS
  - Clients limited to HTTP only will fail (for example scheduled clear-text Python script calls)
  - HTTP only ArcGIS Enterprise deployments may have issues accessing ArcGIS Online services
- **What do you need to do?**
  - Validate your ArcGIS Online org utilizes HTTPS only immediately
  - Launch AGO Security Advisor tool to check your org settings @ [Trust.ArcGIS.com](https://trust.arcgis.com)
  - If HTTP enabled, use tool to discover HTTP references and change to HTTPS
  - Enforce HTTPS only for your orgs ASAP and validate clients/scripts can use HTTPS
  - Keep an eye out for additional announcements and support guidance pages



# Print Your Certificate of Attendance

## Print Stations Located in 150 Concourse Lobby

### Tuesday

12:30 pm – 6:30 pm  
Expo  
Hall B

5:15 pm – 6:30 pm  
Expo Social  
Hall B

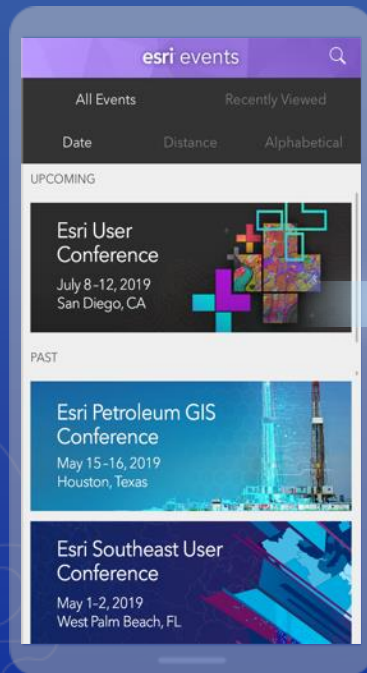
### Wednesday

10:45 am – 5:15 pm  
Expo  
Hall B

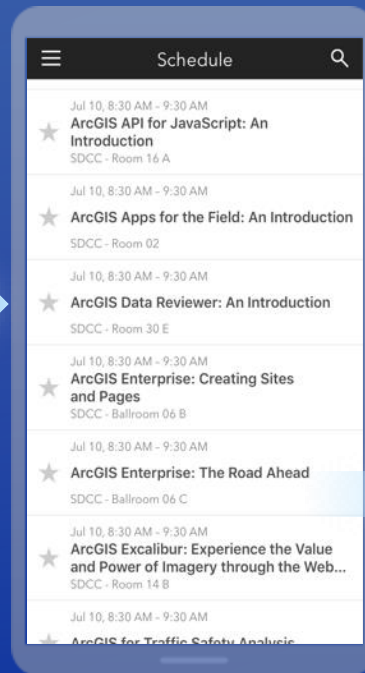
6:30 pm – 9:30 pm  
Networking Reception  
Smithsonian National Museum  
of Natural History

# Please Share Your Feedback in the App

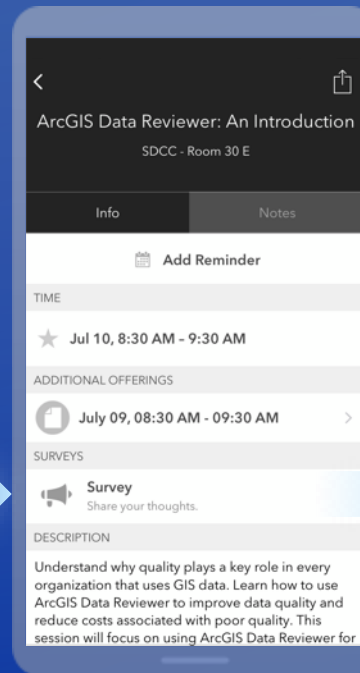
Download the Esri Events app and find your event



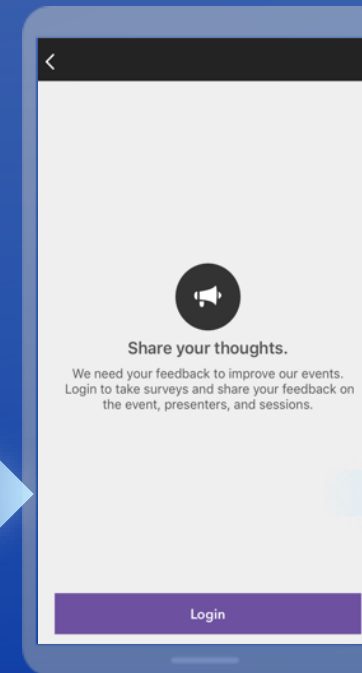
Select the session you attended



Scroll down to "Survey"



Log in to access the survey



Complete the survey and select "Submit"

