



Pump up your Pop-ups with Arcade Expressions

Beth Romero – Product Engineer

Paul Barker – Product Engineer

2021 ESRI
DEVELOPER SUMMIT

Make the most of you pop-up

- Highlight what's most important
 - Make it readable
 - Mix and match different types of content
 - Style with color

Zoom to

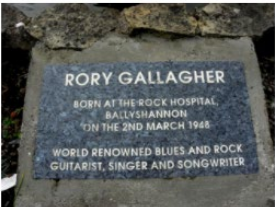
Ballyshannon, Upper Main Street

title	Rory Gallagher stone plaque
inscription	Rory Gallagher born at The Rock Hospital, Ballyshannon on the 2nd March 1948 world renowned blues and rock guitarist, singer and songwriter
country	Ireland
area	Ballyshannon
address	Upper Main Street
erected	
site photo	View
colour	stone
organisations	[]
number of people	1
name	Rory Gallagher
born	1948
died	1995
roles	["singer", "blues and rock guitarist", "songwriter", "guitarist"]
primary role	
lwikipedia	View
dbpedia	View
picture	View
subjects	["Rory Gallagher(1948-


Zoom to

Ballyshannon, Upper Main Street

Rory Gallagher born at The Rock Hospital, Ballyshannon on the 2nd March 1948 world renowned blues and rock guitarist, singer and songwriter

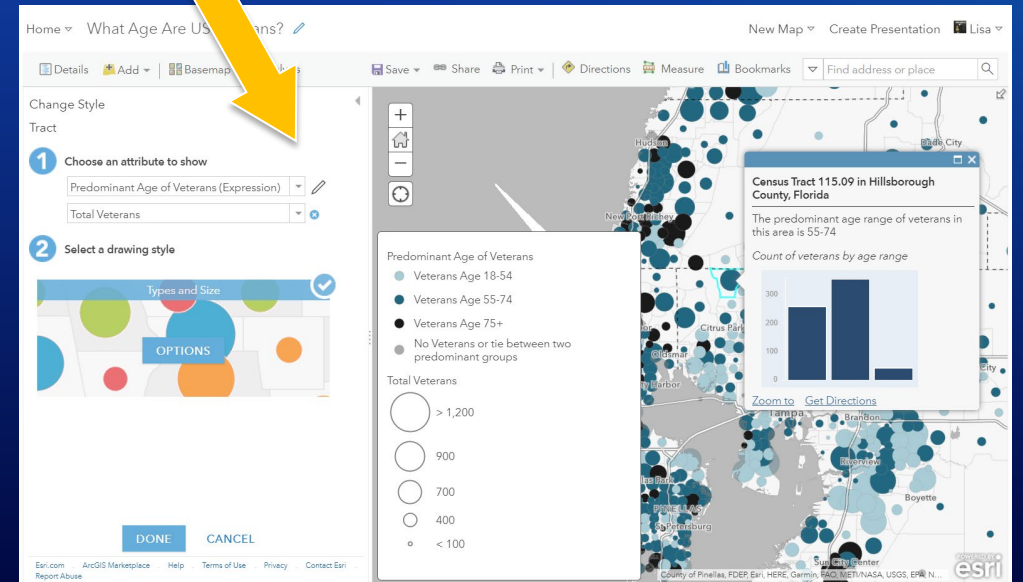
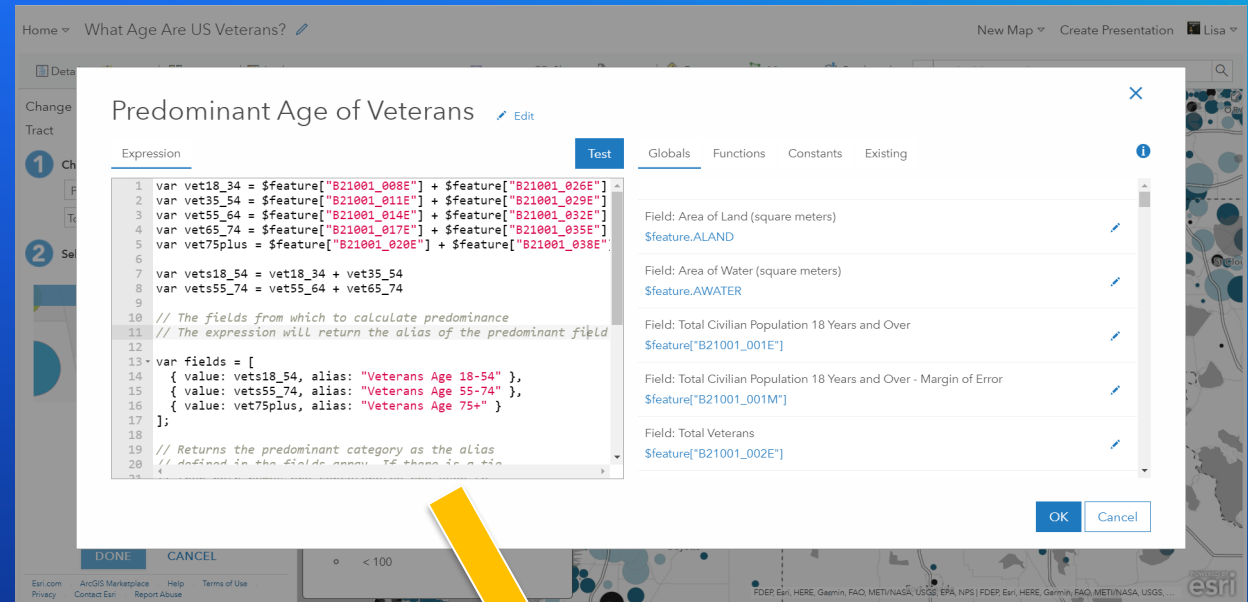


[About Rory Gallagher](#)
[More about Rory Gallagher](#)



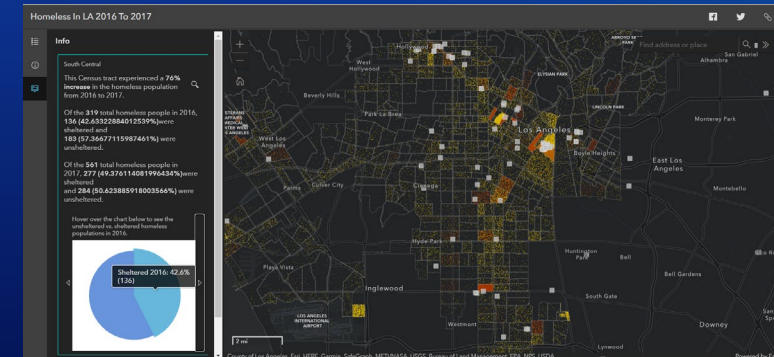
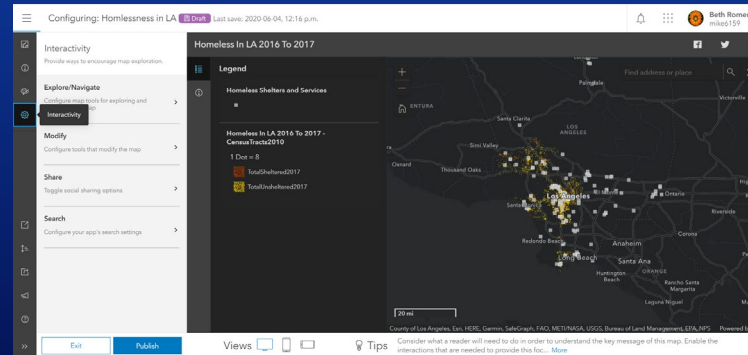
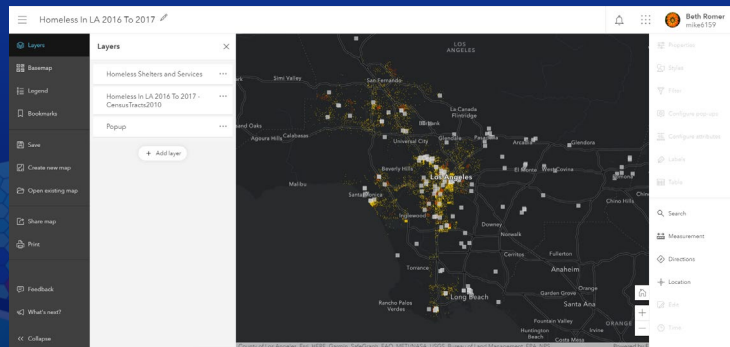
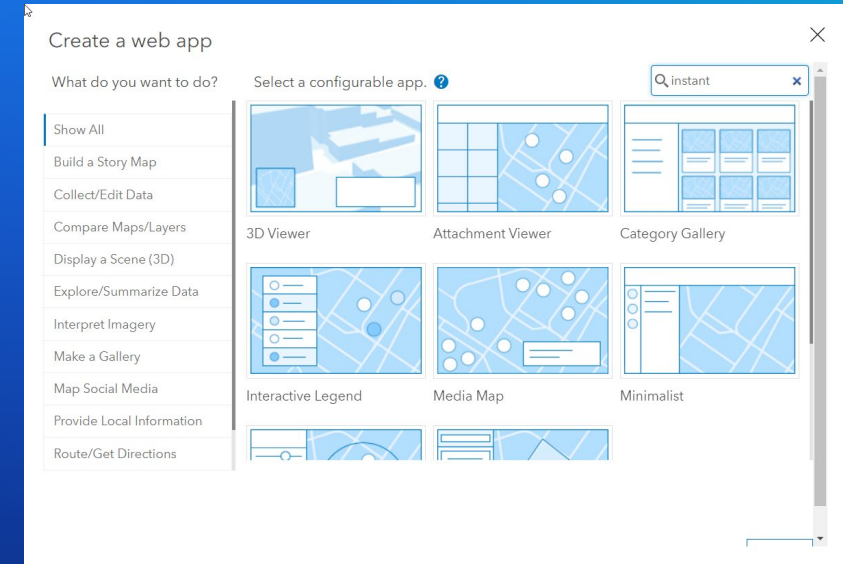
What is Arcade?

- Lightweight expression language
- Calculate new values on-the-fly
- Data-driven
 - Use attribute values to modify your map
 - Symbology, pop-ups, transparency, symbol rotation, labels, and more



Apps complete the user experience

- Easy and quick to configure
- Present map information and tools in meaningful ways
- Leverage capabilities in the map



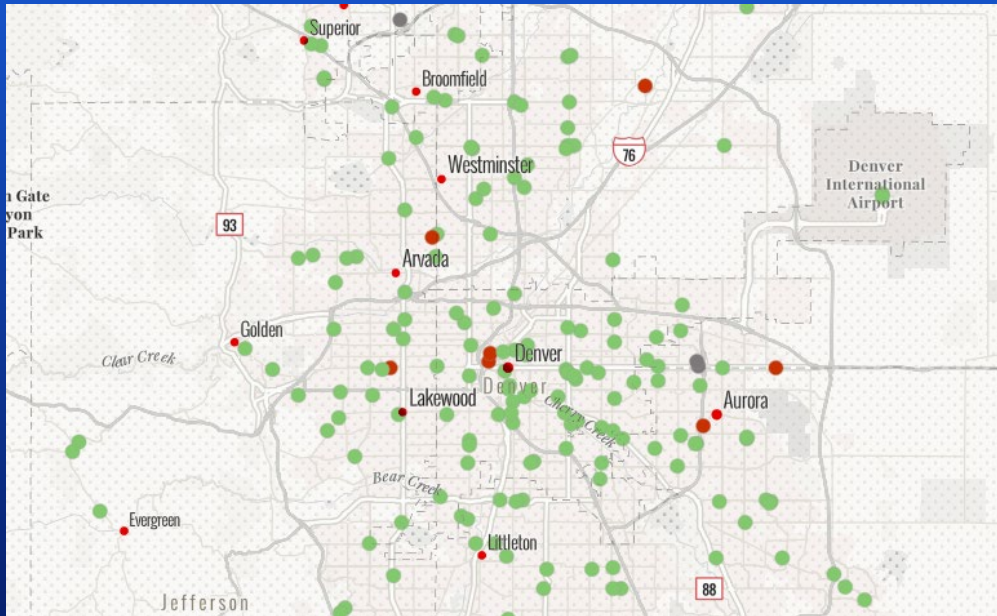
Map
Scene
Group

App template

Configured application

Ways to use Arcade to make your pop-up awesome

- Custom field values
 - Calculate new values on-the-fly
 - Don't have to own the data
 - Simple or complex
- Feature Sets – access data from other layers in the map
 - Geometry functions
 - Access data values
- Use within pop-up HTML to control:
 - Colors



Demos

Resources for Arcade

<http://esriurl.com/ArcadeResources>

Documentation

ArcGIS for Developers Dashboard Get Started Documentation Pricing Support

Documentation / **ArcGIS Arcade**

ArcGIS Arcade

Version 1.5.0 - December 2018

Home Guide Function Reference Playground Support

Simple, Portable, Expressions!

Arcade is an expression language that can be used across the ArcGIS Platform. Whether writing simple scripts to control how features are rendered, or expressions to control label text, Arcade provides a simple scripting syntax to deliver these capabilities.

Arcade scripts are portable. This means that scripts you author in ArcGIS Pro can be read and executed in a WebMap through a browser, or in a Mobile Application.

Write your First Expression

Get started with writing your own expressions.

Understand the Language

Arcade can be used to write simple single line expressions, as well as complex scripts. See how.

Arcade Profiles

See how Arcade can be used in the ArcGIS Platform.

Blogs about Arcade

ArcGIS Blog Overview Topics

Create powerful popups in web apps with Arcade feature sets

By Kristin Biernie / ArcGIS App for JavaScript | January 15, 2019

Feature sets allow you to access multiple features within an Arcade expression, enabling you to create powerful popup content.

[Continue reading](#)

What's new with Arcade: Taking a stroll through FeatureSets Part 2

By Paul Beller / ArcGIS Online | December 21, 2018

Arcade is one of the many ways you can make smarter, and more elegant maps. Learn how FeatureSets let you work with other layers in your map.

[Continue reading](#)

Create Custom Field Calculations Using Arcade Expressions

By Lisa Berry / ArcGIS Online | December 18, 2018

Harness the power of Arcade to create simple or complex field calculations.

[Continue reading](#)

What's new with Arcade: Taking a stroll through FeatureSets (Part 1)

By Paul Beller / ArcGIS Online | December 12, 2018

Arcade is one of the many ways you can make smarter, and more elegant maps. Learn how FeatureSets let you work with other layers in your map.

[Continue reading](#)

GitHub – Arcade Examples

ekenes Merge pull request #14 from RebeccaLeh/master Latest commit ac274ef on Dec 21, 2018

File	Description	Time
alias	Remove unneeded tags & markdown/whitespace cleanup	4 months ago
any	Merge pull request #8 from bsvenson/cleanup2	4 months ago
calculation	Add Calculation and Constraint profiles to repo.	3 months ago
constraint	Add Calculation and Constraint profiles to repo.	3 months ago
labeling	Remove unneeded tags & markdown/whitespace cleanup	4 months ago
popup	Update date-since.md	a month ago
visualization	Remove unneeded tags & markdown/whitespace cleanup	4 months ago
UCENSE	Initial commit	a year ago
README.md	Add Calculation and Constraint profiles to repo.	3 months ago

ArcGIS Arcade expressions

This repository is intended for sharing and maintaining reusable Arcade expressions across all supported profiles.

General workflow

These expressions are organized based on their intended execution profile. The following folders correspond with each profile:

- Any
- Alias
- Calculation
- Constraint
- Labeling
- Popup
- Visualization

Story Map Tutorial

esri How to Smart Map

How to Smart Map: Arcade

Dynamically transform your data using Arcade expressions

ArcGIS Online Group: Examples

Home Gallery Map Scene Groups Content Organization

Arcade Expressions and You Overview Content Members Settings

Search group content: Grid Title Filter

Filters

1 - 16 of 38

Group Categories

No Group Categories Yet

Categories allow group members to organize items consistently and provide a simple way to browse content in the group.

[Set up group categories](#)

Item Type

Maps Layers Scenes Apps Tools Files

Date Modified

Tags

African Ancestry in th... by JenniferBell_UO Created: May 19, 2017 Updated: Oct 19, 2017 View Count: 142

California Prison Ove... by JenniferBell_UO Created: Dec 14, 2016 Updated: Jul 18, 2018 View Count: 562

Caribbean Ancestry L... by JenniferBell_UO Created: Apr 19, 2017 Updated: Jul 5, 2017 View Count: 449

Change in Forest Are... by JenniferBell_UO Created: May 24, 2017 Updated: Jan 5, 2018 View Count: 806

Construction and Ext... by dianaclavery_uo Created: Aug 17, 2017 Updated: Oct 24, 2017 View Count: 863

Dallas Youth Populati... by lisa_berry Created: Dec 14, 2016 Updated: Dec 14, 2016 View Count: 787

Declining Home Ow... by UOdocent Created: Jun 20, 2017 Updated: Nov 6, 2018 View Count: 257

Deferred Action for ... by dianaclavery_uo Created: Jan 23, 2018 Updated: Jul 16, 2018 View Count: 844



esri®

THE
SCIENCE
OF
WHERE®



Presentation Title

Presenter Names

*2021 ESRI
DEVELOPER SUMMIT*



Section Header

Section Subhead

The background of the slide is a deep blue gradient. In the top-left and bottom-left corners, there are abstract, colorful graphic elements. These include wavy lines in shades of blue, yellow, and red, along with some circular patterns and dots. A large, solid white rectangle is positioned on the left side of the slide, partially overlapping the abstract graphics.

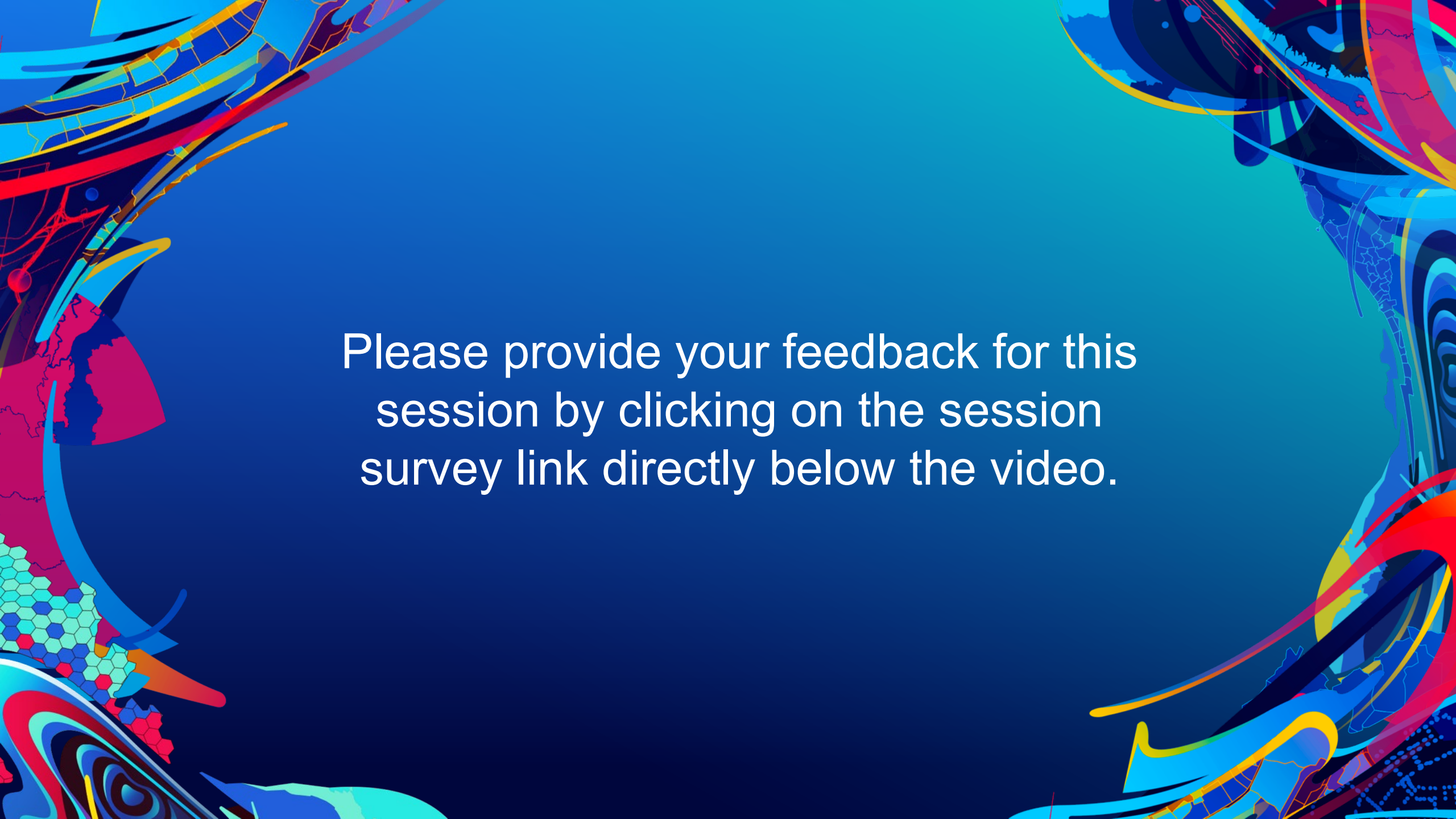
Demo Title

Presenter(s)



esri®

THE
SCIENCE
OF
WHERE®

The background is a vibrant, abstract composition. It features a central area of solid blue and teal. The left and right sides are framed by complex, colorful patterns. On the left, there are swirling shapes in red, yellow, and blue, along with a section of a hexagonal grid in shades of green and blue. On the right, there are more swirling patterns in blue, red, and yellow, with some areas resembling a stylized face or mask. The overall effect is dynamic and visually rich.

Please provide your feedback for this session by clicking on the session survey link directly below the video.