



# Working with Time data

Cameron Smith and Brandon Cree

2021 ESRI  
DEVELOPER SUMMIT



# Roadmap

- Visualization Approaches
  - Smart Mapping Drawing Styles
  - Animations
- Demos

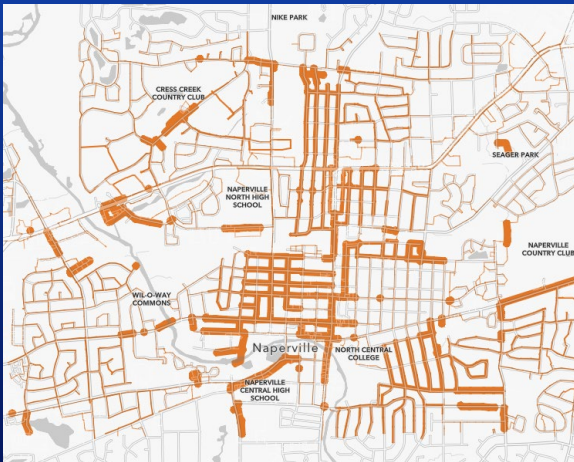
# Time visualizations of spatial data are tricky

The visualization you create depends on the story you want to tell with the data

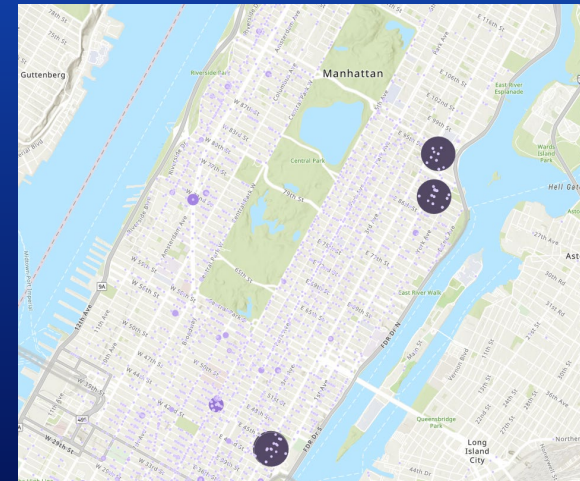


# Time Visualization Approaches

- Smart Mapping Drawing Styles
  - Available in 4.x Map Viewer Styles options with a time layer
- Examples



<https://webapps.maps.arcgis.com/apps/mapviewer/index.html?webmap=0cbdda132a742a1a95db8b5618b1744>



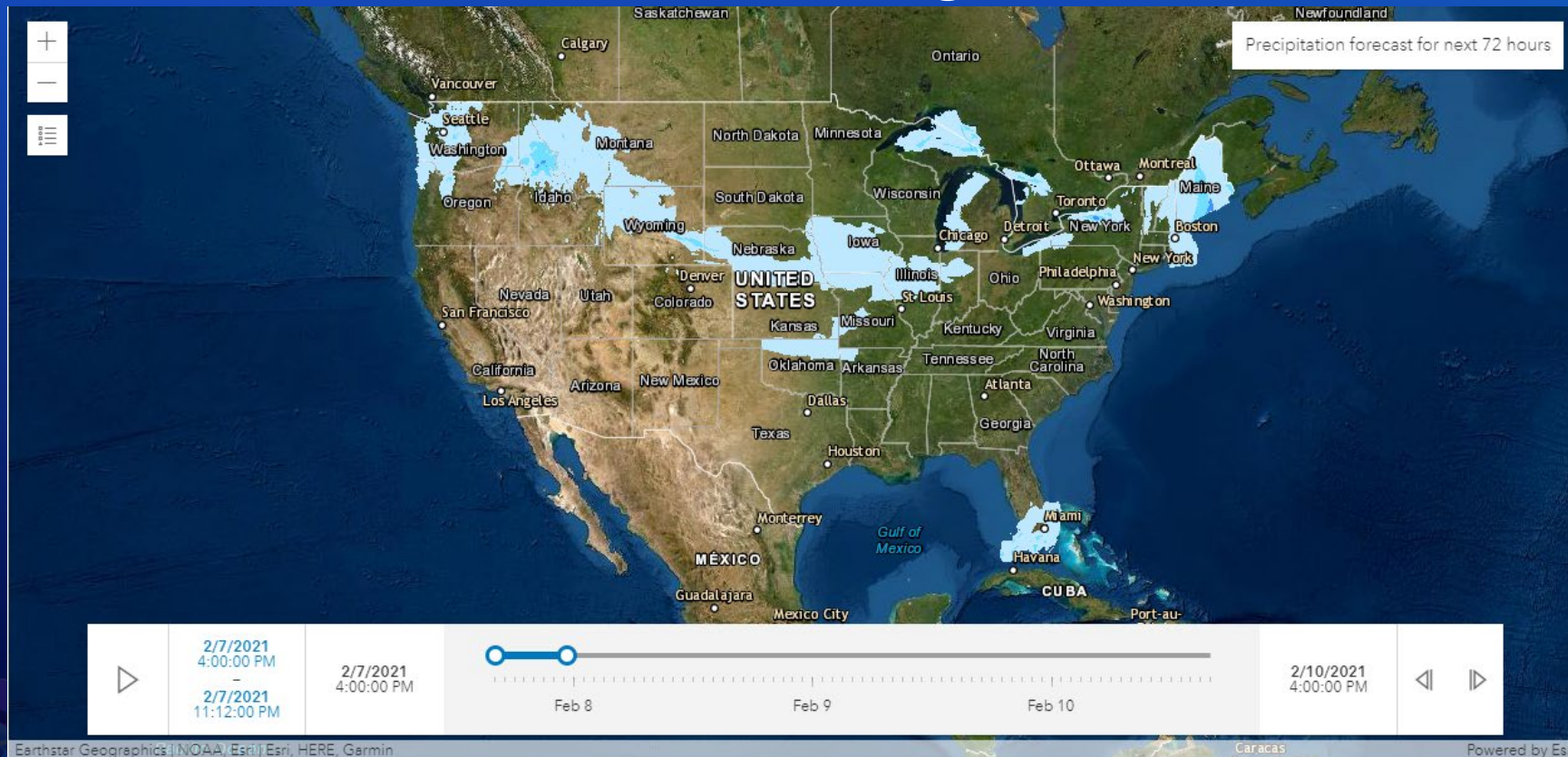
<https://webapps.maps.arcgis.com/apps/mapviewer/index.html?webmap=f0e7b8c27a73418b9136c6948351105a>



# Time Visualization Approaches (cont.)

- Time Animations

## TimeSlider Widget



<https://developers.arcgis.com/javascript/latest/sample-code/widgets-timeslider/>

# Demo – White Nose Syndrome (WNS) in Bats

- Originated in Upstate NY in 2007
- Spread throughout the US and Canada
- Fatal, at some sites has killed 90%-100% of bats

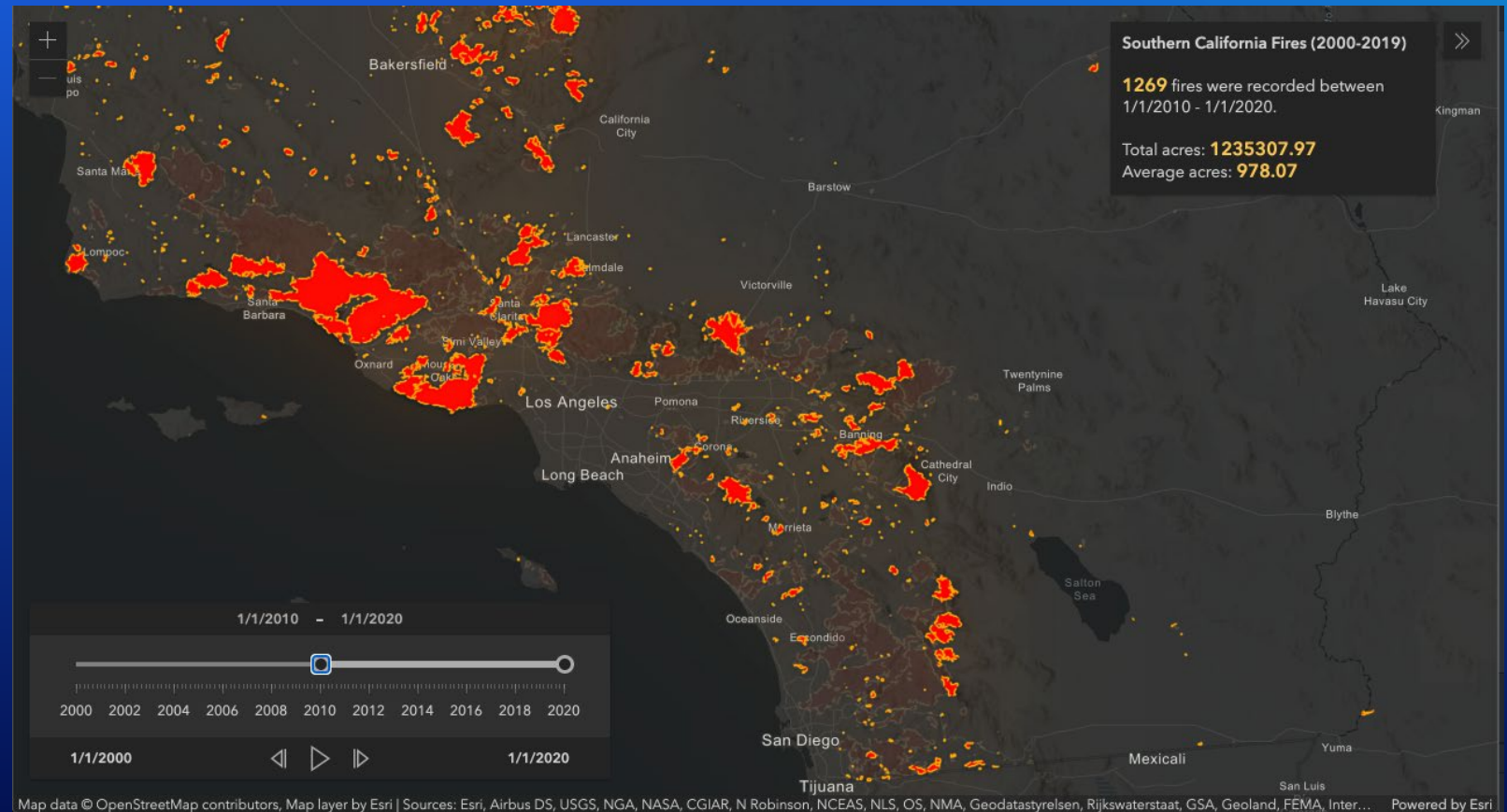
- <https://webapps.maps.arcgis.com/apps/mapviewer/index.html?webmap=5a4a29cef5eb43c2b963ec2385cda17c>
- <https://codepen.io/csmith55/pen/GRNNGzr?editors=1000>





# Demos – Create apps with time-enabled layers

- Feature layer
- GeoJSON layer
- Time offset app
- Time slider widget
- Filtering features



# In Summary

- **Time Visualizations Approaches:**
  - Smart mapping drawing styles
  - Animations with Time Slider
- **Lots of demos showing practical application of techniques**

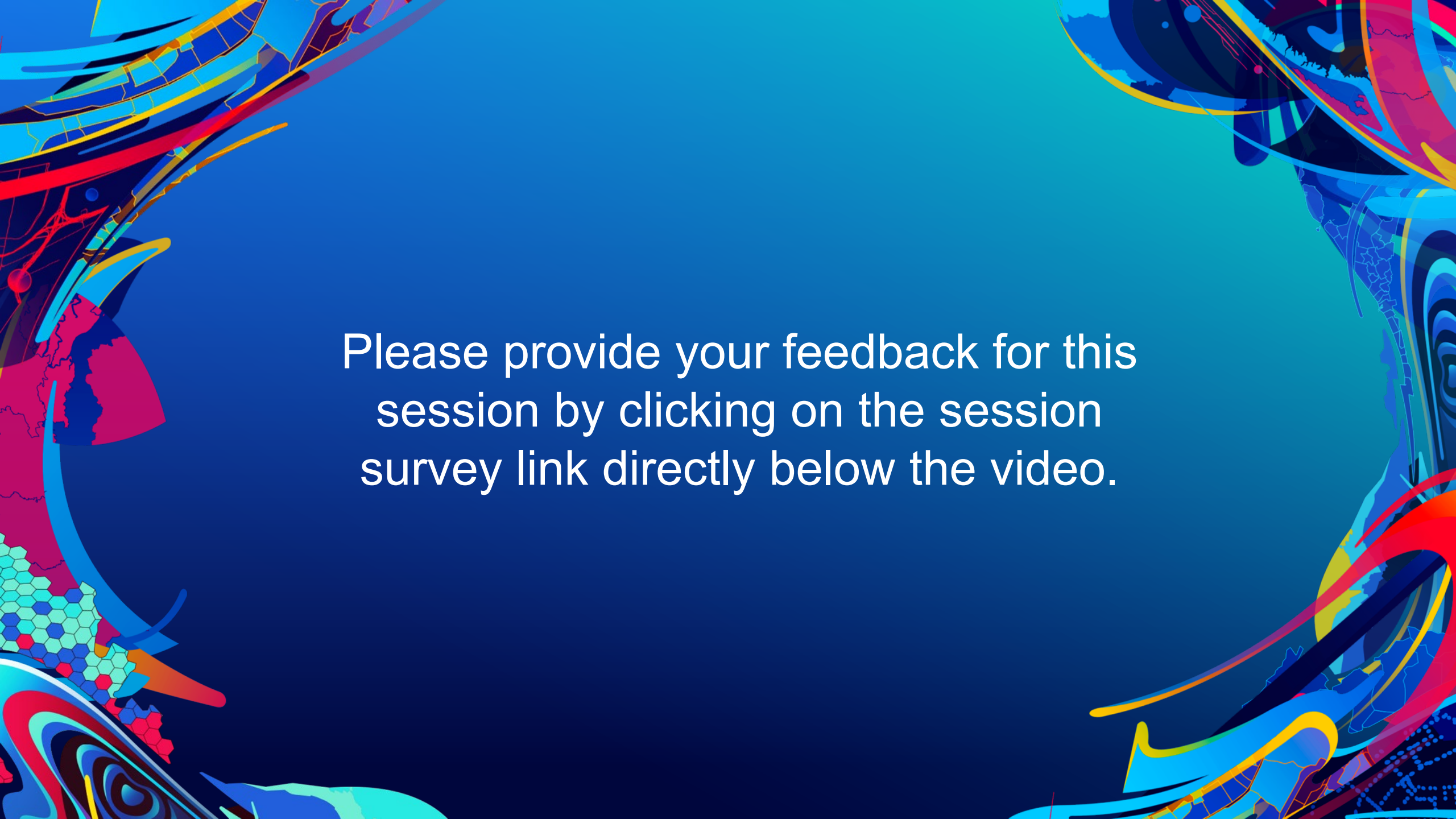






esri®

THE  
SCIENCE  
OF  
WHERE®

The background is a vibrant, abstract composition. It features a central area of solid blue and teal. The left and right sides are framed by complex, colorful patterns. On the left, there are swirling shapes in red, yellow, and blue, along with a section of a hexagonal grid in shades of green and blue. On the right, there are more swirling patterns in blue, red, and yellow, with some areas resembling a stylized face or mask. The overall effect is dynamic and modern.

Please provide your feedback for this session by clicking on the session survey link directly below the video.