



Creating Custom Native Apps with AppStudio App Templates

Chris LeSueur

Tina Jin

2021 ESRI
DEVELOPER SUMMIT

ArcGIS AppStudio is a
low-code / no-code solution
for creating native apps



Why Native Apps?

Offline



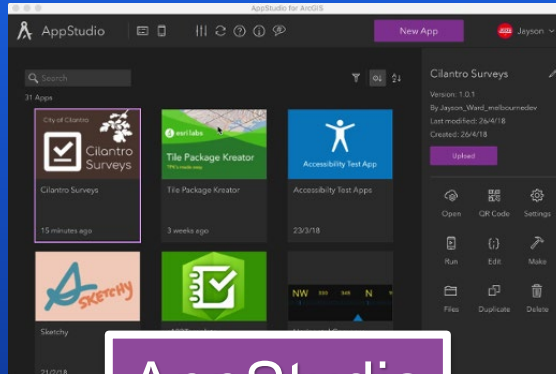
Device
Capabilities



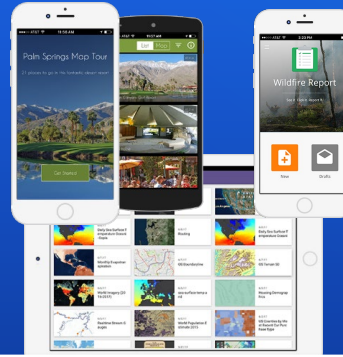
App Stores



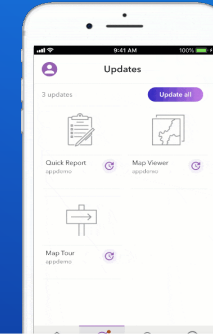
The AppStudio suite of productivity tools



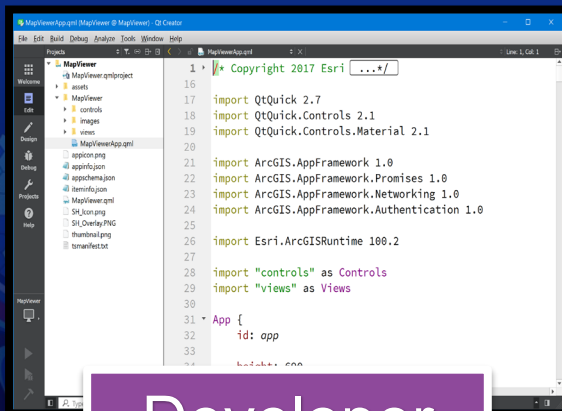
AppStudio
Desktop



Configurable
Templates



AppStudio
Player



Developer
Environment



Interactive
Samples



Advanced
Templates



Cloud Make
Service

What are Templates?

- Fully functional apps for common workflows
- Easy to configure without code
 - Add images and text
 - Change colors and icons
 - Connect your data sources (maps, features)
- Source Code is available

Why use Templates?

- Build apps faster (less time, less resources)
- Anyone can configure an app (developer skills not required)
- Maintain Branding of your organization
- Stability benefits – tested on many devices
- Customize the code if needed
 - "...we just need that one extra button to do xyz..."

Overview of Templates



AppStudio Templates

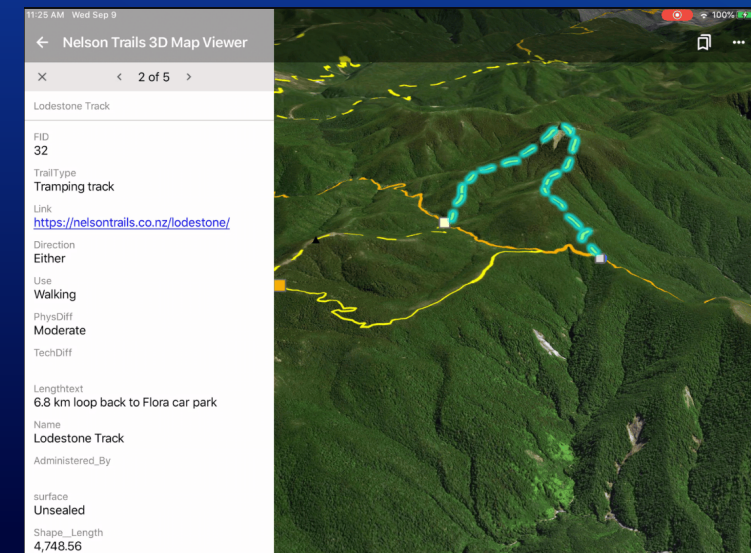
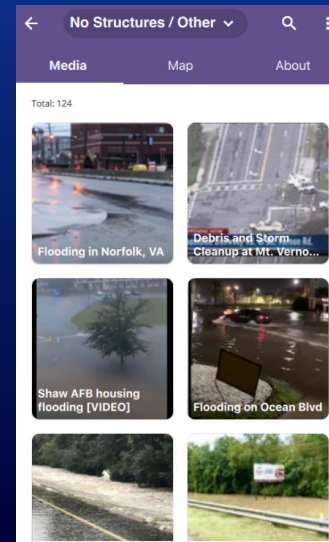
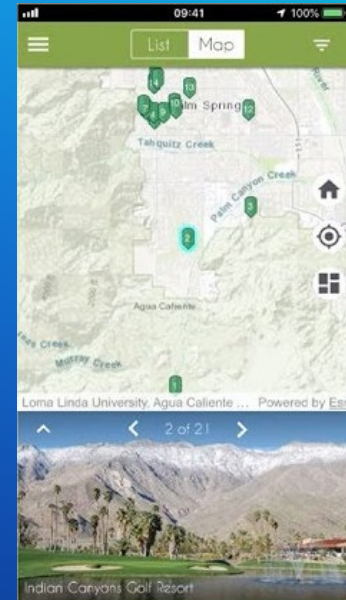
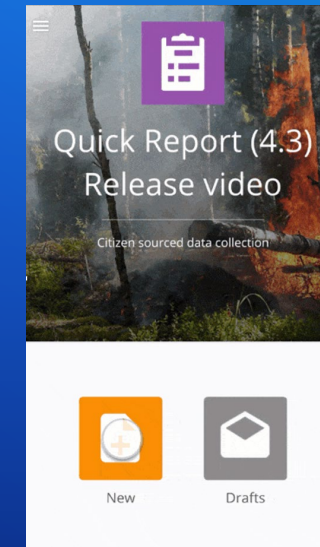
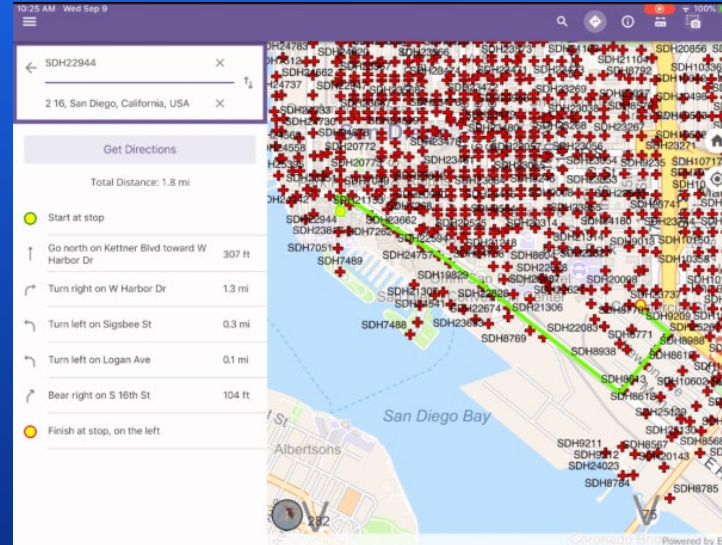
Map Viewer

Map Tour

Quick Report

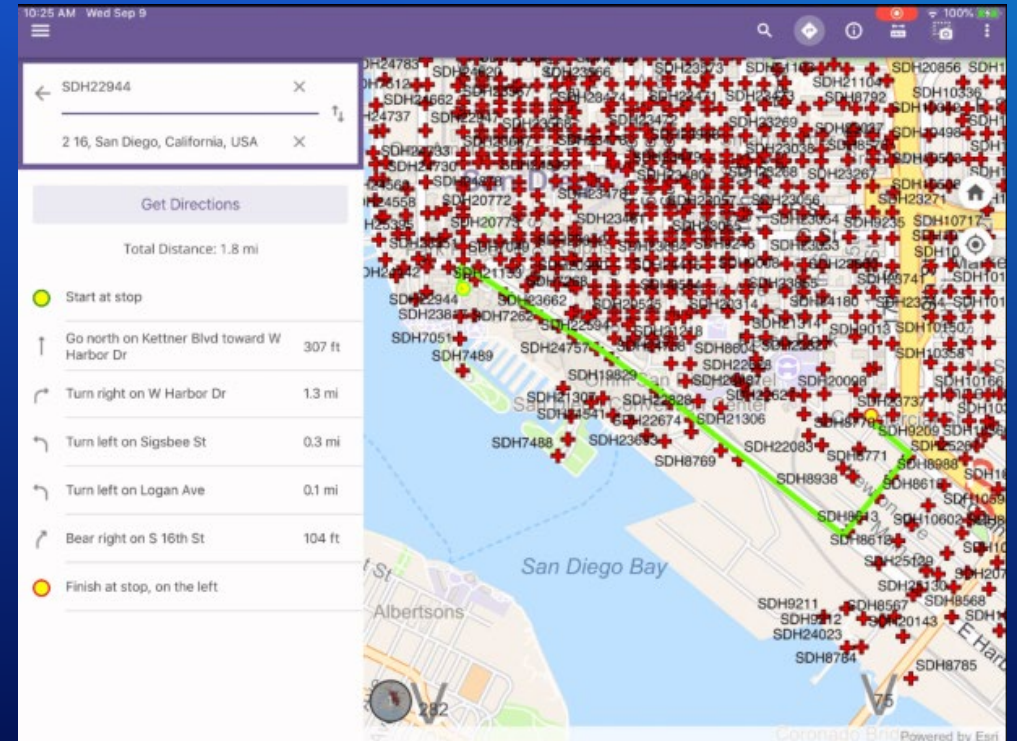
3D Scene Viewer

Attachment Viewer



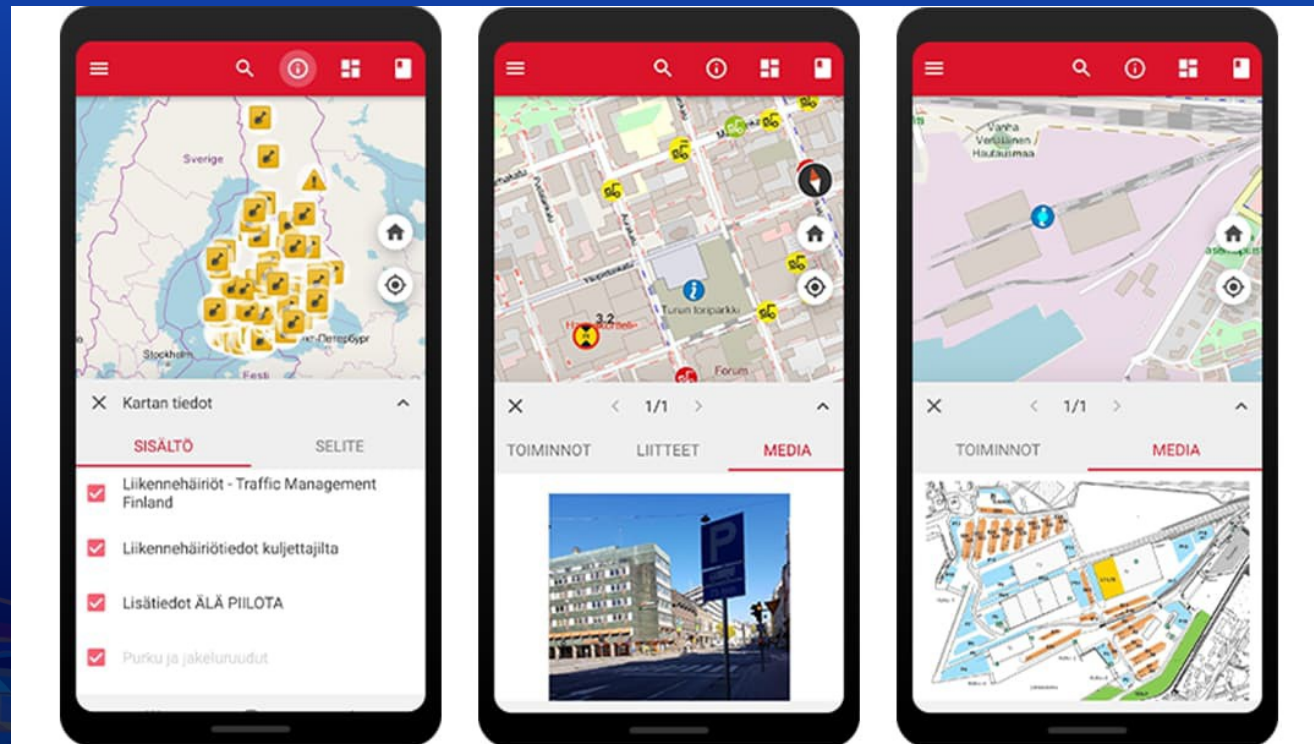
Map Viewer Template

- Works with a web map or mobile map package
- Single map or gallery of maps
- Online or offline
- Tools include:
 - Pop-up feature information
 - Bookmarks
 - Measure
 - Sketching and Screenshot
 - Attribute edition
 - Routing



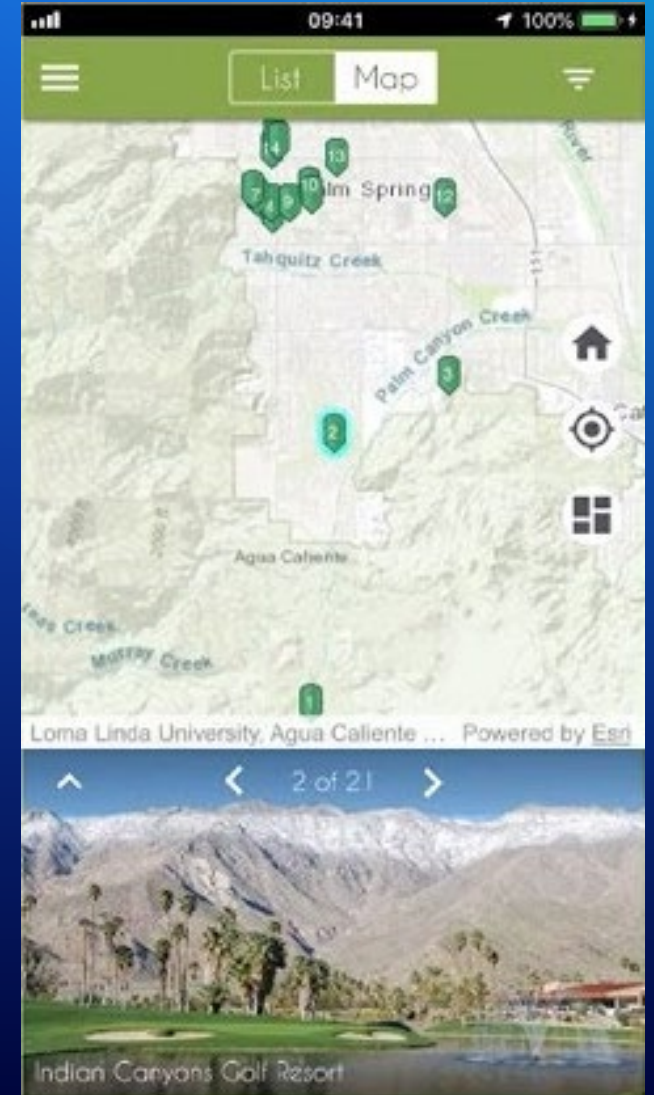
Example: Map Viewer Template

- Tietorahti Oy
- Information for Truck Drivers in Finland



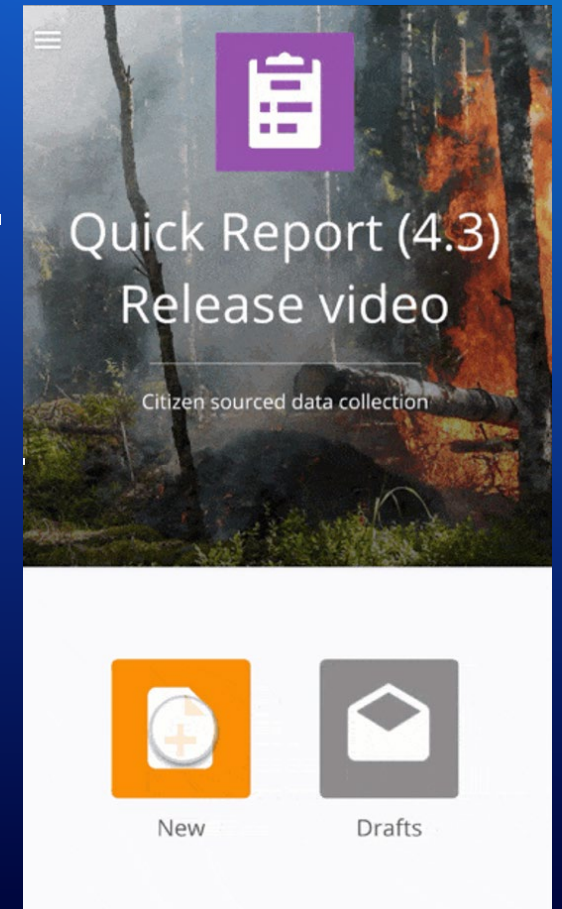
Map Tour Template

- Works with a classic Story Maps Map Tour
- Displays locations in a specified order or by distance
- Displays photos and description information for each location.



Quick Report Template

- **For public data collection** (crowd source/citizen science)
- **Works with an existing feature layer**
- **Uses domains and field types to create an easy-to-use data collection experience**
- **Works online and offline**
- **Capture text, photos, audio and more**



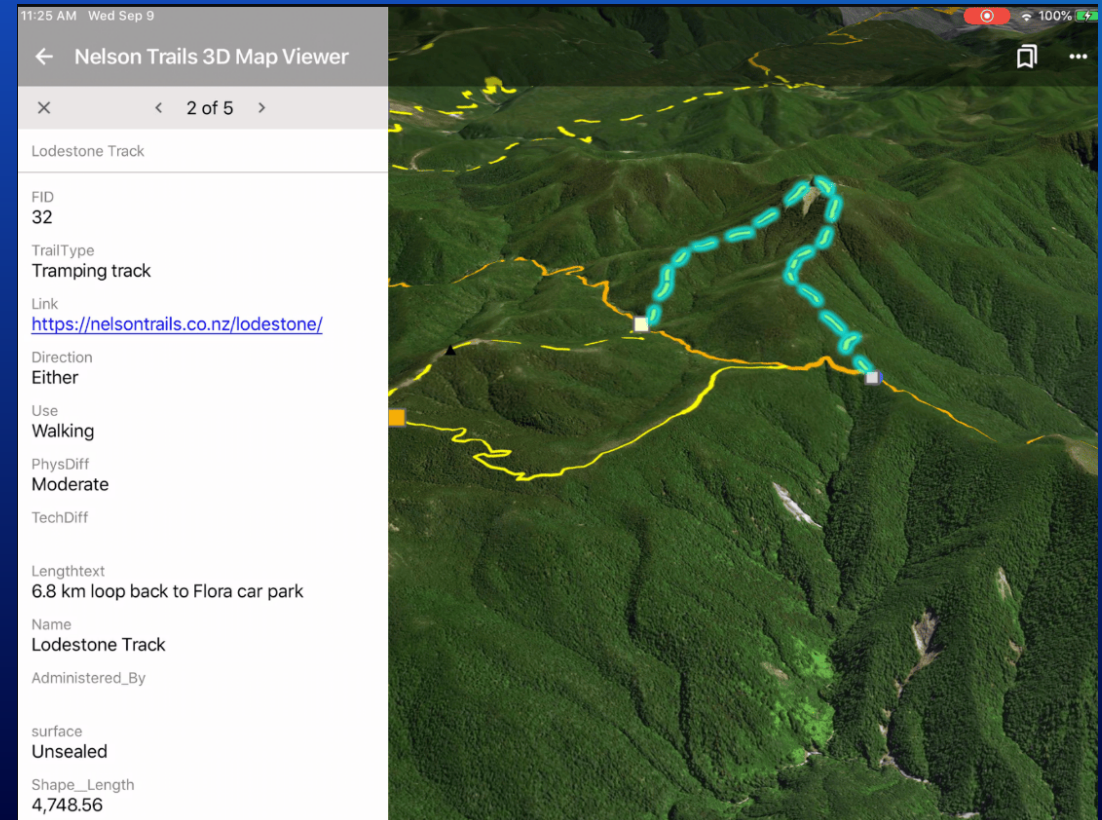
Example: Quick Report Template



311 Apps

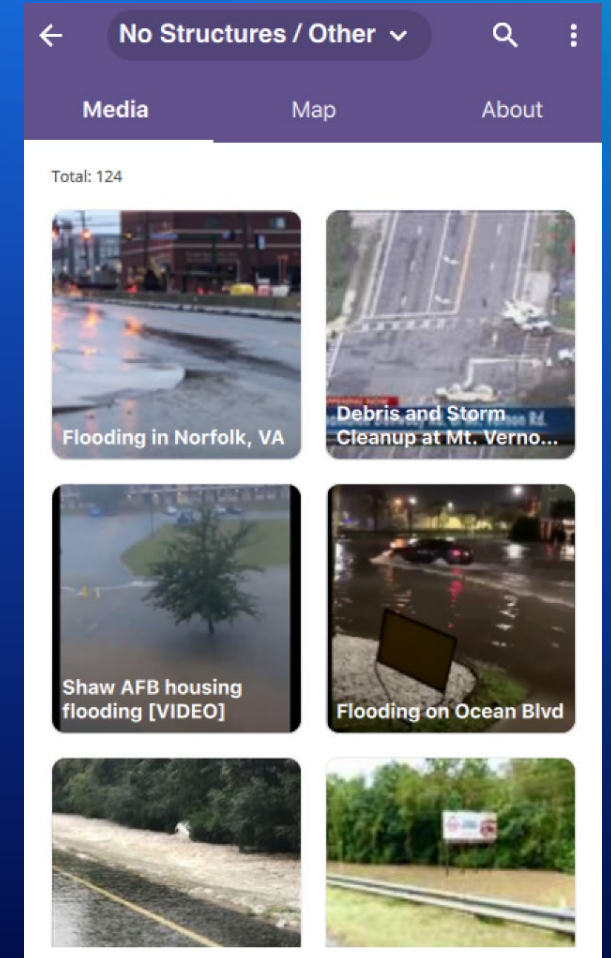
3D Scene Viewer Template

- Works with a web scenes or mobile scenes packages
- Single scene or gallery of scenes
- Online or offline
- Tools include:
 - Pop-up feature information
 - Bookmarks
 - Daylight effects tool



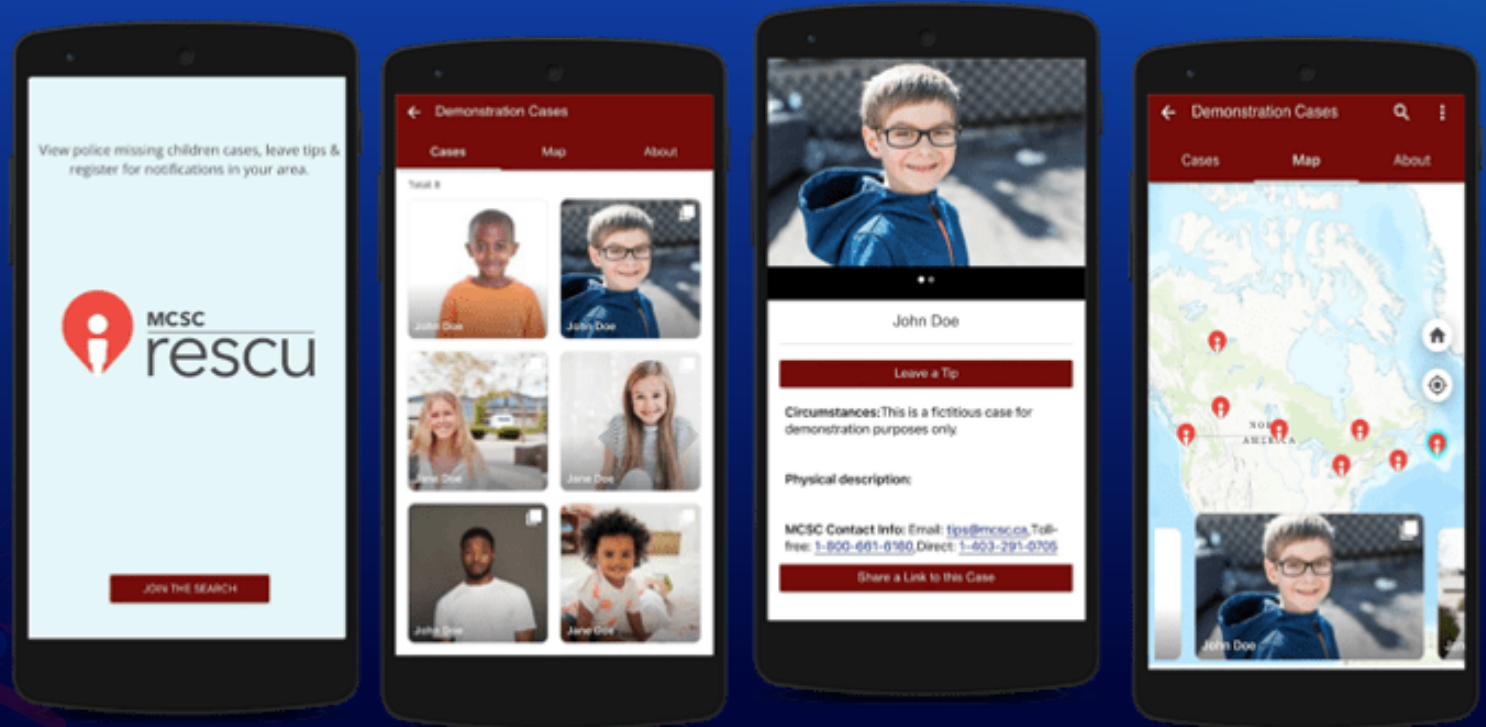
Attachment Viewer Template

- Based on the Attachment Viewer Configurable Web App
- Media focused experience
- Switch between attachments, attributes, map



Example: Attachment Viewer Template

- MCSC rescu Mobile App
- Missing Children Society of Canada (MCSC)





Configuring a Templates

Tina Jin

Customizing Apps with code



Programming Language

- **QML**
 - Qt Modeling Language
 - Declarative Language designed to build apps
 - QML is used to define the user interface (Similar to HTML and CSS)
- **Javascript**
 - Javascript ECMA-262 7th Edition.
 - Javascript is used to define business logic (events, functions)



Customizing Apps with code

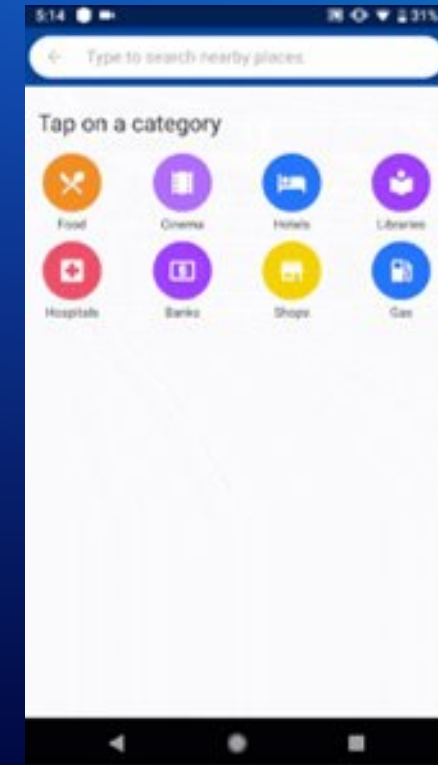
Tina Jin

Programming Language

- **QML**
 - Qt Modeling Language
 - Declarative Language designed to build apps
 - QML is used to define the user interface (Similar to HTML and CSS)
- **Javascript**
 - Javascript ECMA-262 7th Edition.
 - Javascript is used to define business logic (events, functions)

Coming in 2021 - Nearby App Template

- Search for Points-of-interest
- Sort by distance
- Show as list or on the map
- Provide directions



AppStudio Templates

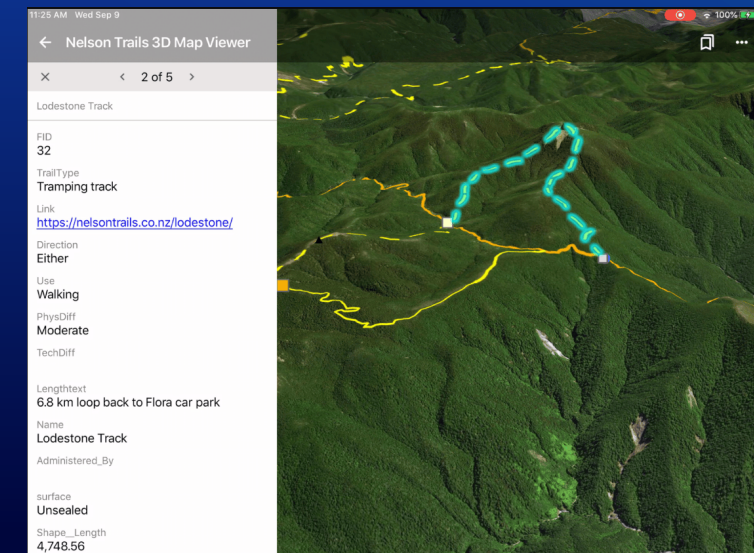
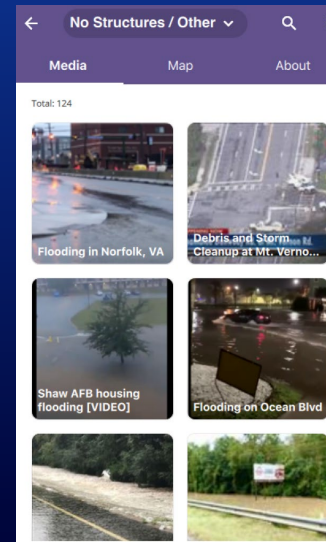
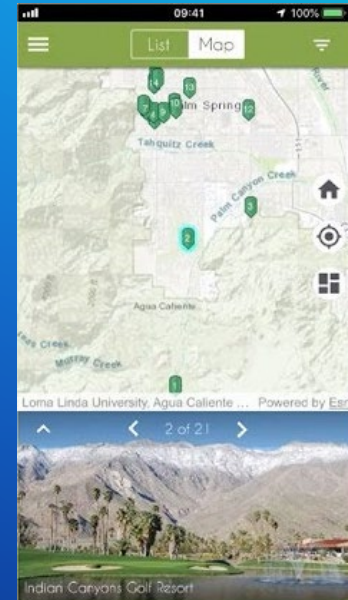
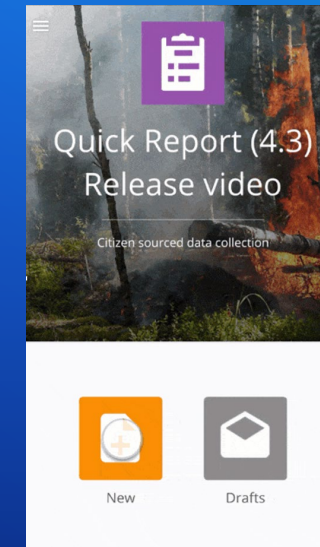
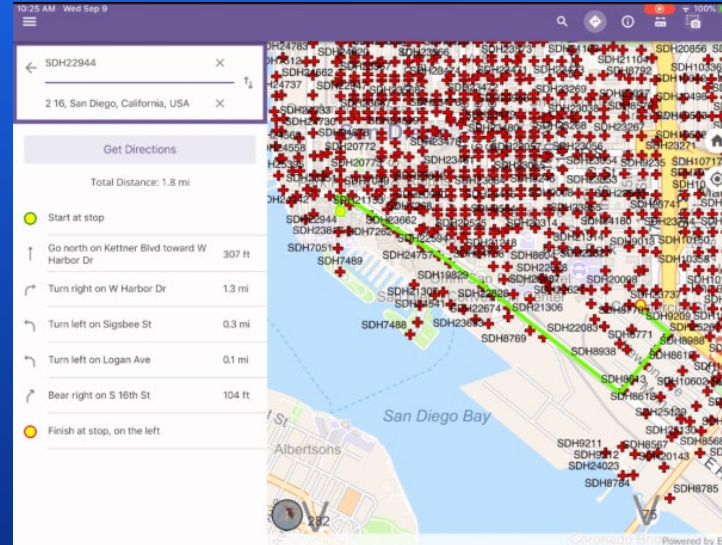
Map Viewer

Map Tour

Quick Report

Scene Viewer

Attachment Viewer




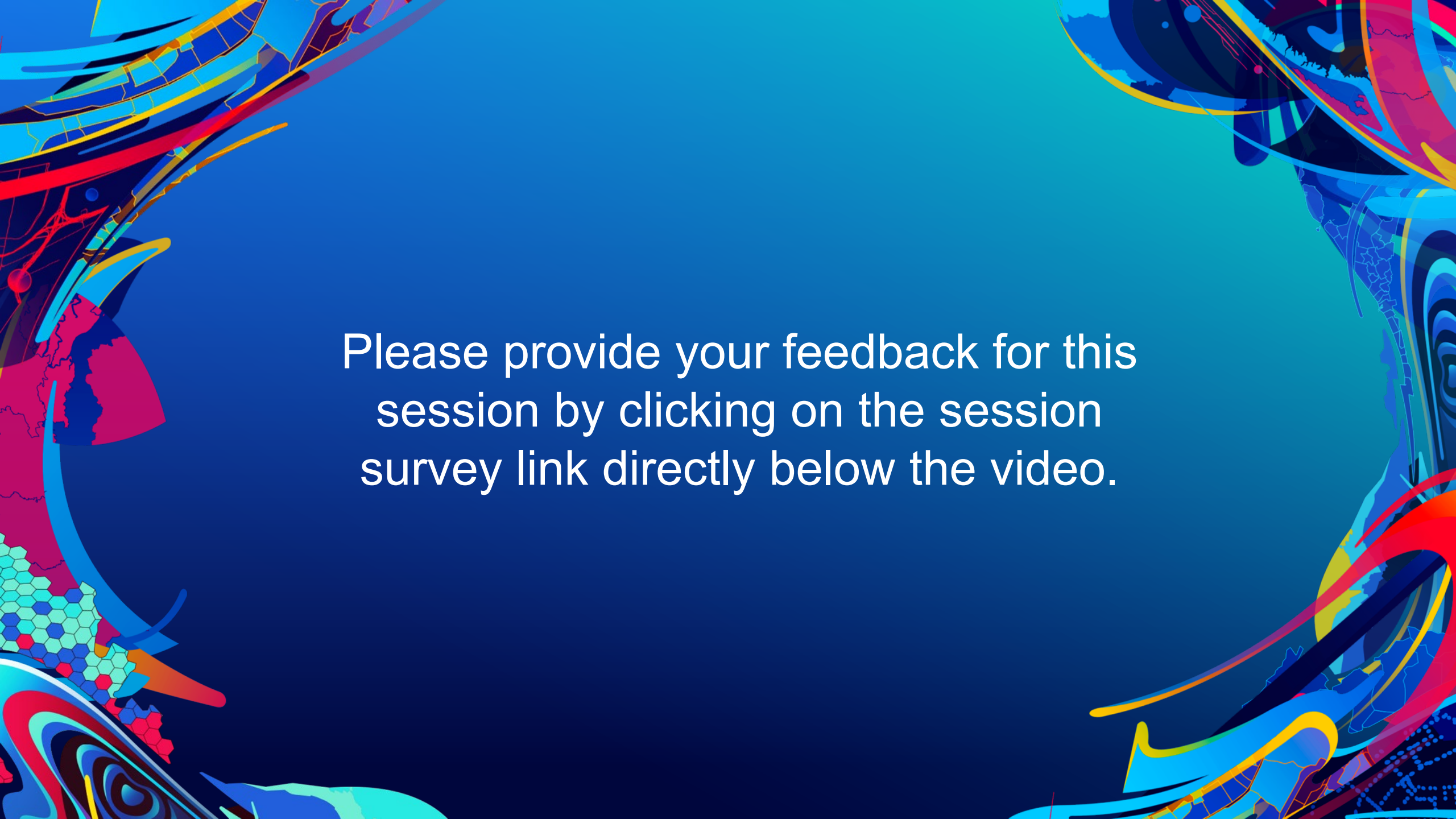
Thank You!



Esri DevSummit 2021

ArcGIS AppStudio Technical Sessions

- **ArcGIS AppStudio An Introduction**
 - **ArcGIS AppStudio: What's New**
 - **Creating Custom Native Apps with AppStudio App Template**
 - **AppStudio and TensorFlow Lite -- Machine Learning on Edge Devices**
- 

The background is a vibrant, abstract composition. It features a central area of solid blue and teal. The left and right sides are framed by complex, colorful patterns. On the left, there are swirling shapes in red, yellow, and blue, along with a section of a hexagonal grid in shades of green and blue. On the right, there are more swirling patterns in blue, red, and yellow, with some areas resembling a stylized face or mask. The overall effect is dynamic and visually rich.

Please provide your feedback for this session by clicking on the session survey link directly below the video.



esri®

THE
SCIENCE
OF
WHERE®