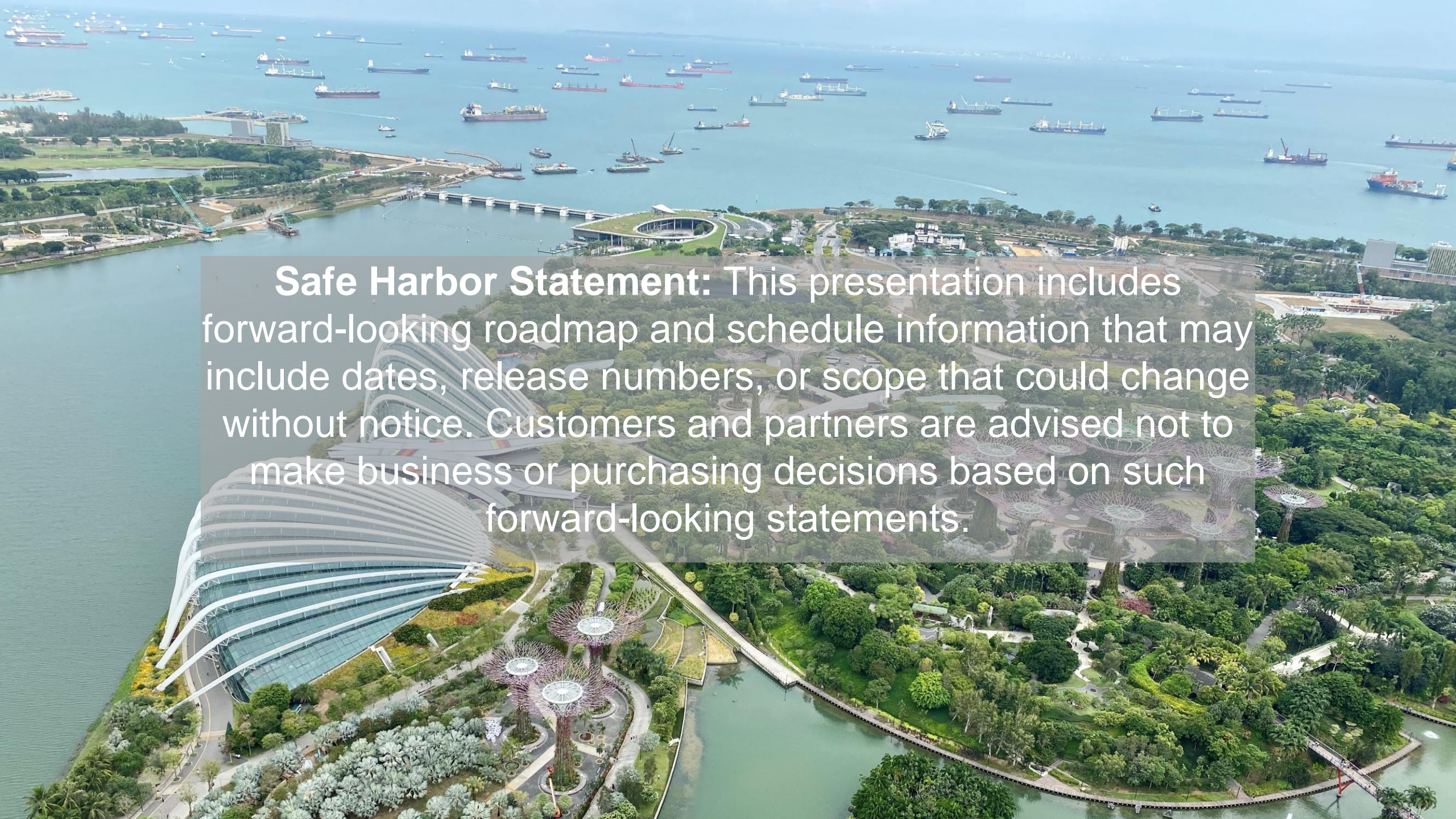


CAD, BIM, and GIS – Linking Design with Context to Drive Life Cycle Value

Chris Andrews | Group Product Manager – GeoEnabled Systems, Smart Cities, 3D

Anthony Renteria | Product Manager – ArcGIS GeoBIM & AEC

Thomas Warner | Solution Engineer – National Government's Defense Team

An aerial photograph of a harbor area. In the foreground, there is a modern architectural complex with a large, curved glass dome structure. To the right of the dome is a park with several tall, slender trees with circular canopies. A body of water is visible in the lower right corner. In the background, a large harbor is filled with many ships, including cargo ships and tankers. The sky is blue and clear.

Safe Harbor Statement: This presentation includes forward-looking roadmap and schedule information that may include dates, release numbers, or scope that could change without notice. Customers and partners are advised not to make business or purchasing decisions based on such forward-looking statements.

The Case for BIM + GIS

The image shows a construction site during the 'blue hour' of sunset. The sky transitions from a deep orange near the horizon to a dark, clear blue at the top. The skeletal steel framework of a building is silhouetted against the bright sky. Several vertical columns and horizontal beams are visible, forming the basic structure. In the foreground on the left, a large, leafy tree stands with its branches partially obscuring the view. To the far left, the arm of a construction crane is visible, extending towards the building. The lower portion of the building's frame shows some internal lighting, with a warm glow emanating from the lower levels. The overall scene conveys a sense of industrial progress and modern architecture.

Global opportunities to help implement change

Bold thinking needed to bring Mass. transportation into future



Disconnected: Thousands in Delaware lack access to safer public water

By Zoë Read - January 27, 2020

Listen 5:44

BOSTON M
(Staff Photo)

By RICHARD
January 29,



Consuelo McGowan from SERCAP collects samples for testing at a mobile home in Ellendale, Del. McGowan works for a non-profit that provides kits for testing well water. (Zoe Read/WHYY)

Garbage Trucks And Potholes: San Antonio Launches Research And Development Program To Solve Problems

By PAUL FLAHERTY • JAN 28, 2020

Share Tweet Email



"City Hall To Go" is one of the R&D League's initiatives outreach and intake efforts overlap and to align those low-income, h

Salt Lake City braces for traffic problems as five skyscrapers rise amid a wave of downtown construction



(Francisco Kjolseth | The Salt Lake Tribune) Captured during a recent timed exposure, the intersection of 200 S. and West Temple where work has begun on the 25-story Hyatt Regency convention center hotel, is about to become difficult to navigate. With at least six major construction projects unfolding this year in the state's urban core — five skyscrapers and the historic renovation of the Salt Lake Temple — key arteries feeding the heart of the city are expected to be congested, with lane closures and heavy truck traffic.

The world needs to build more than two billion new homes over the next 80 years

February 28, 2018 9:29am EST

By the end of this century, the world's population will have increased by half — that's the global population is set to reach over 10 billion, a population which was estimated at the time of the "medium growth".

MI6 floor plans lost by building contractor

27 December 2019

Infrastructure After COVID-19: Risk Of Another Lost Decade Of U.S. State Government Capital Investment

View Analyst Contact Information

Table of Contents

Key Takeaways

- If state and local government infrastructure investment had continued at the rate prior to the Great Recession, \$1.5 trillion more in infrastructure spending would have occurred in 2009-2019.
- In the decade following the Great Recession, state governments devoted significantly less of their budgets to capital spending and reduced their overall debt burden.
- As COVID-19 restricts consumer travel, billions of transportation activity-derived revenues that fund capital projects are at risk.
- Federal stimulus was vital following the Great Recession to prevent steeper declines in capital spending, but there is no agreement on a new comprehensive infrastructure spending plan.

S&P Global Ratings' analysis of the decade following the Great Recession shows a decline in state capital spending and infrastructure investment. This new paradigm was due to a number

U.S. Cities Vowed To Have More Mass Transit By 2020. Most Are Still Waiting.

January 9, 2020 | Cameron Sperance, Bisnow Boston

Facebook Twitter LinkedIn Email Print

Planners in many U.S. cities benchmarked 2020 as the year transit plans would get rolling down the tracks.

Master plans and vision studies proclaimed regional transit networks would expand, easing congestion and efficiently zipping residents to and from their jobs and homes in growing metropolitan areas like Austin, Columbus and Nashville.

Let's Move Nashville was a nearly \$9B plan to add light rail and bus rapid transit across Music City. Transit advocates hoped Project Connect would bring light rail to Austin, ranked the **worst city in Texas for traffic congestion**.

But 2020 is here and, despite booming economies, these cities aren't any closer to solving their traffic misery — and that could threaten their growing real estate markets.



SMART UTILITY

Energy Industry Gets Cracking on New Challenges

The task is cut out for planners, engineers, operators and protection folks.

Mark Johnson
MAR 08, 2019

Business drivers for BIM-GIS integration



Increase project
efficiency
(Cost competitiveness)



Move to new
business models
(EPC)

Decrease risk
(Regulatory
compliance)



Extend capabilities
(Managed services)



Increase
competitiveness
(Portfolio sales)

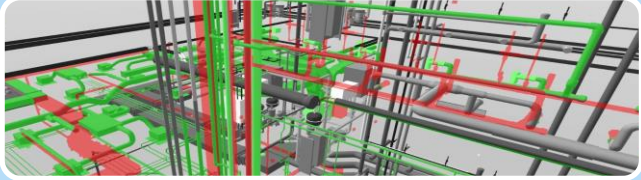


Customer demand

BIM-focused AEC market is filled with geospatial opportunity



Planning



Design



Construction



Program
Management



Maintenance



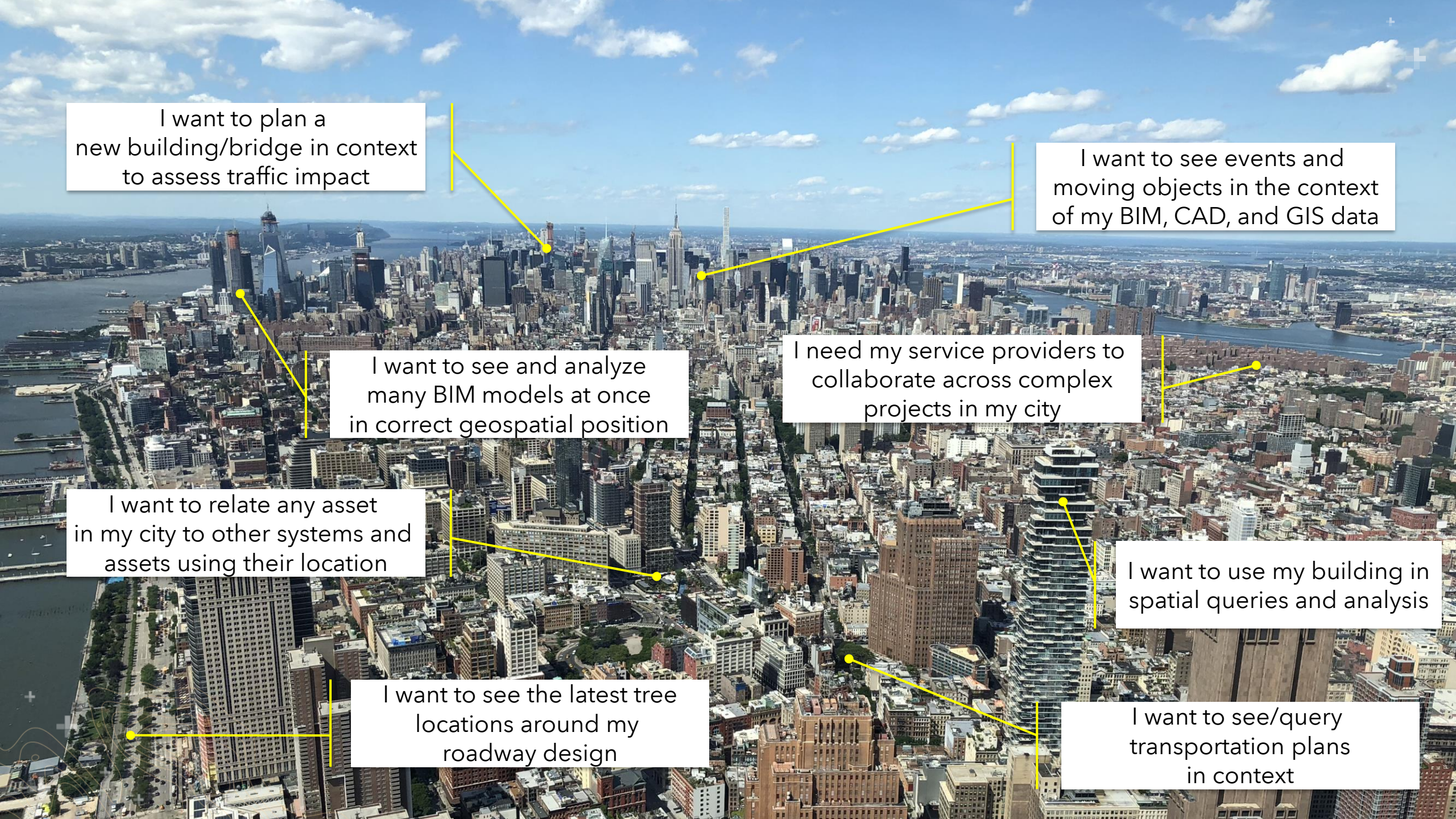
Operations



Imagine that you
manage a large urban
environment...

Now imagine needing
to implement change
in that environment...



An aerial photograph of the New York City skyline, showing a dense cluster of skyscrapers and buildings. The Hudson River is visible on the left, and the East River on the right. The sky is blue with scattered white clouds. Eight white callout boxes with black text are overlaid on the image, each connected to a specific location in the city by a yellow line. The boxes express various urban planning and data management needs.

I want to plan a new building/bridge in context to assess traffic impact

I want to see events and moving objects in the context of my BIM, CAD, and GIS data

I want to see and analyze many BIM models at once in correct geospatial position

I need my service providers to collaborate across complex projects in my city

I want to relate any asset in my city to other systems and assets using their location

I want to use my building in spatial queries and analysis

I want to see the latest tree locations around my roadway design

I want to see/query transportation plans in context



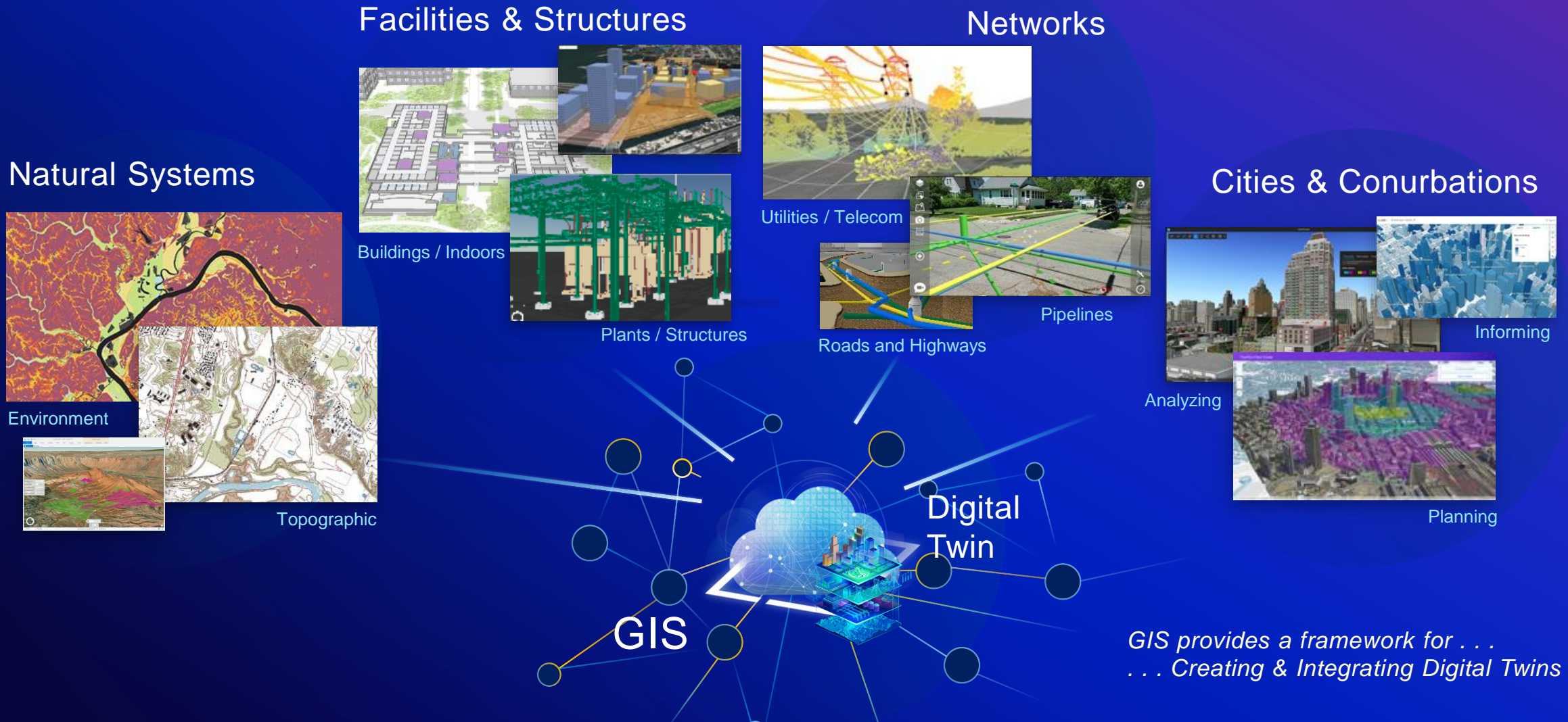
BIM supplies detailed
information about assets



GIS provides information about
assets in the context of the built
and natural environment

Our World is Transforming

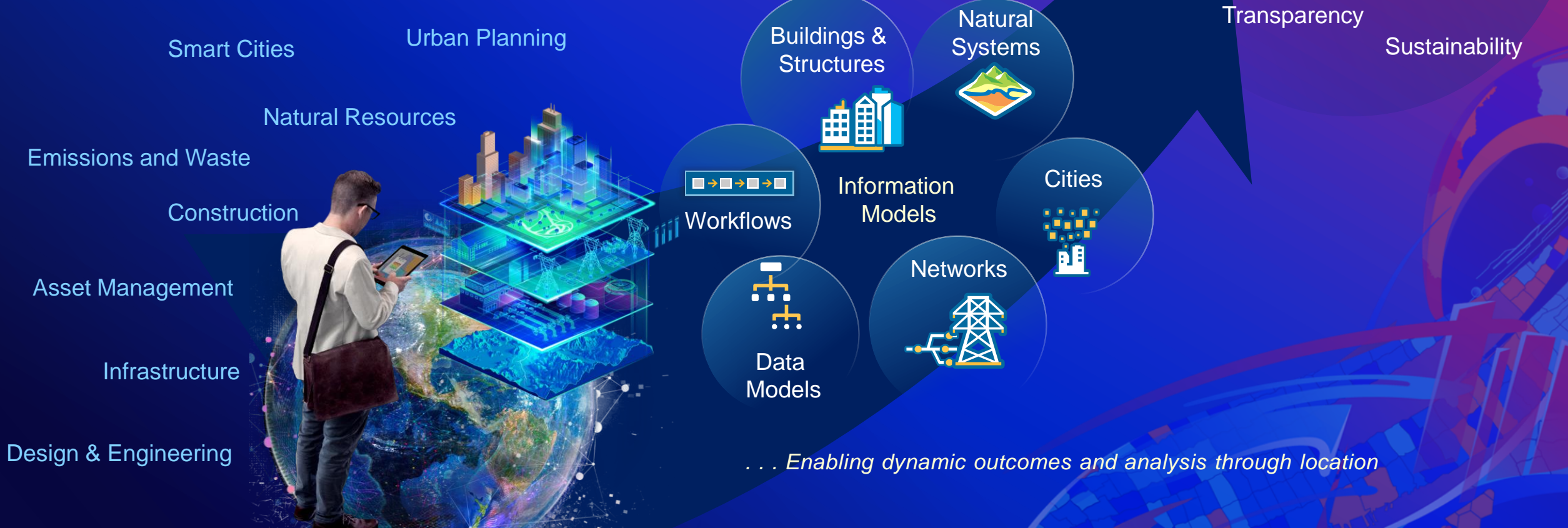
Abstracting and Modeling Real World Assets and Systems to create high value Digital Assets



*GIS provides a framework for . . .
. . . Creating & Integrating Digital Twins*

Integrated Digital Twins

Interconnecting Content, Behavior & Workflows





ArcGIS Integrations

In Desktop Applications for Design, Construction, and Planning



ArcGIS for AutoCAD

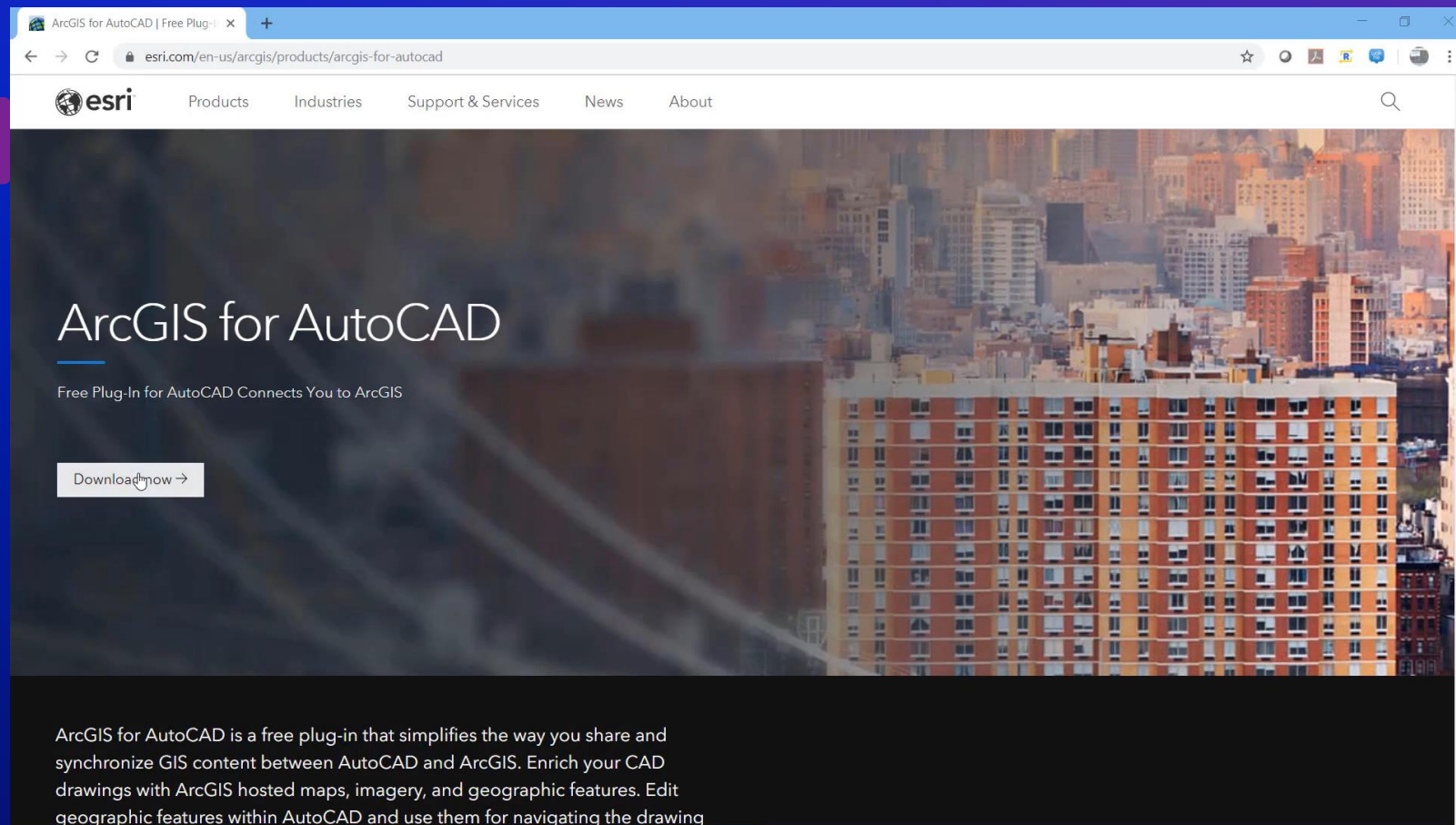
Bringing the power of mapping into your AutoCAD designs

Version 400

- View Map and Imagery
- Location Services
- Create & Edit GIS Feature Layers
- View GIS Attachments

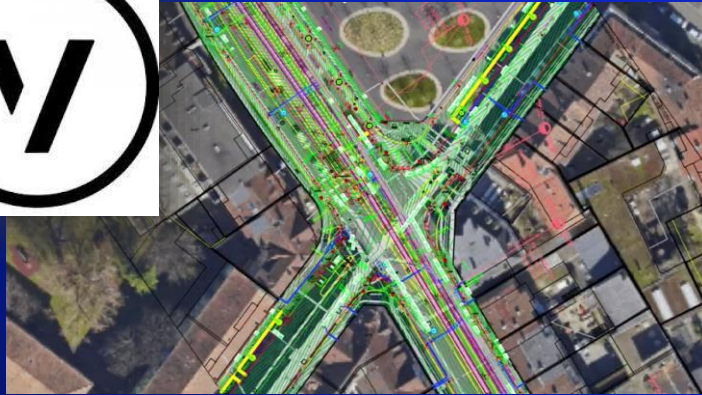
This Summer...

- GIS/CAD Standards & Symbology
 - Sharing CAD to Portal/AGOL
 - Faster editing and QC
 - Open Beta in early March
- <https://earlyadopter.esri.com/>

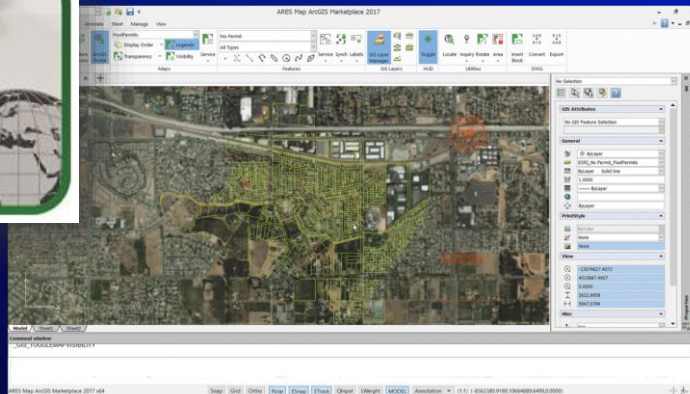


Design Application Connectors

ArcGIS Information in **design software**



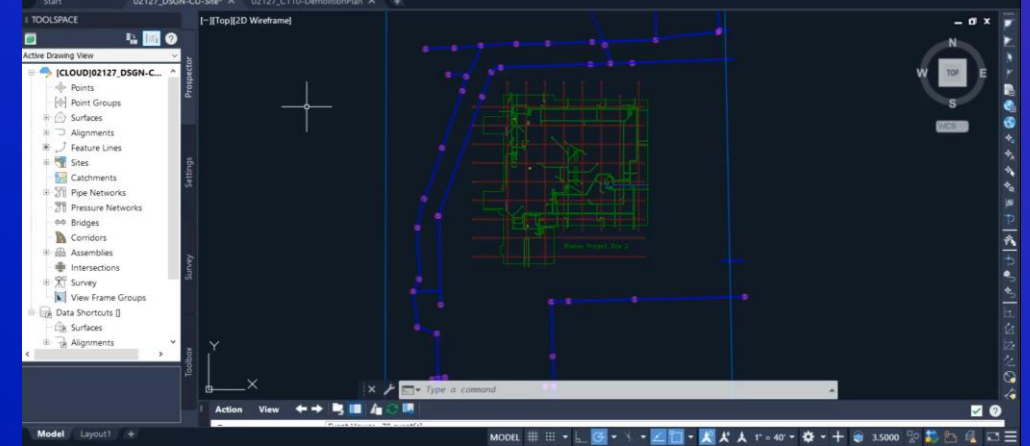
Nemetschek Vectorworks



Graebert ARES Map

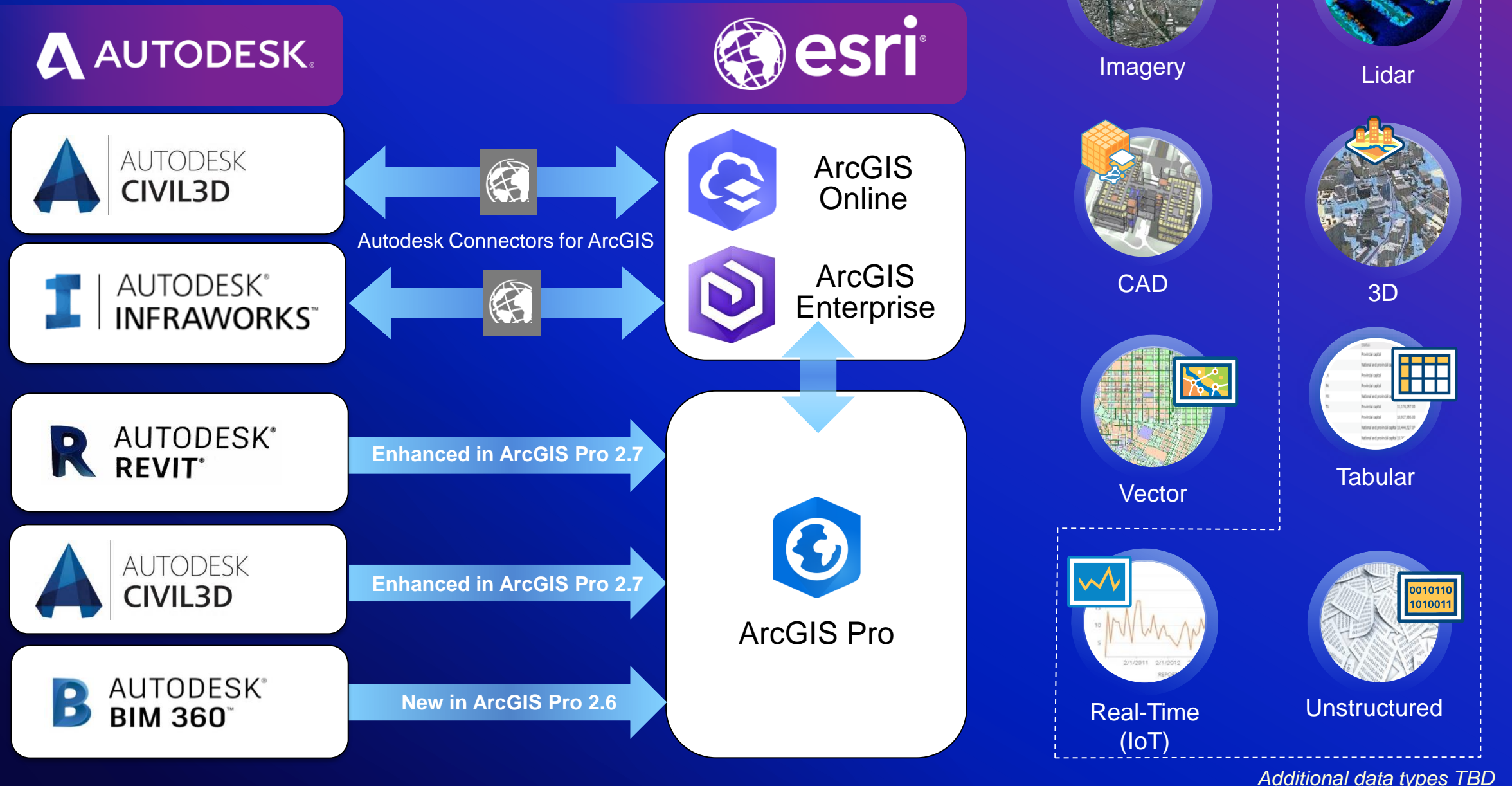


Autodesk InfraWorks



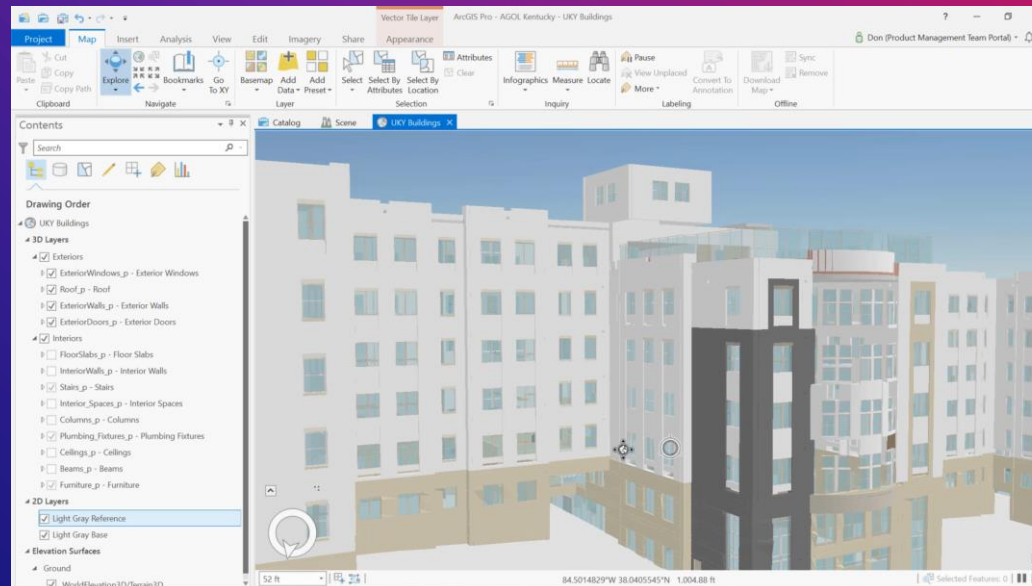
Autodesk Civil 3D

State of Integrations Today



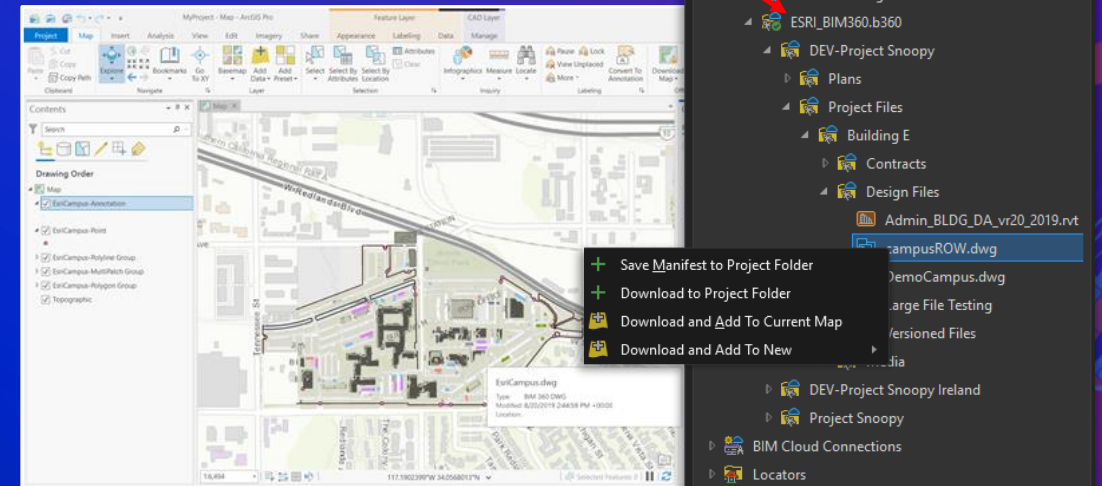
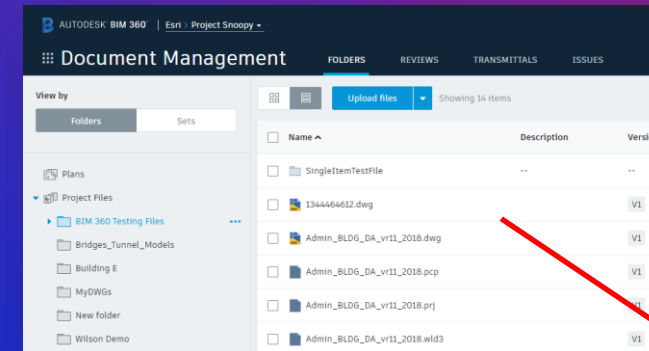
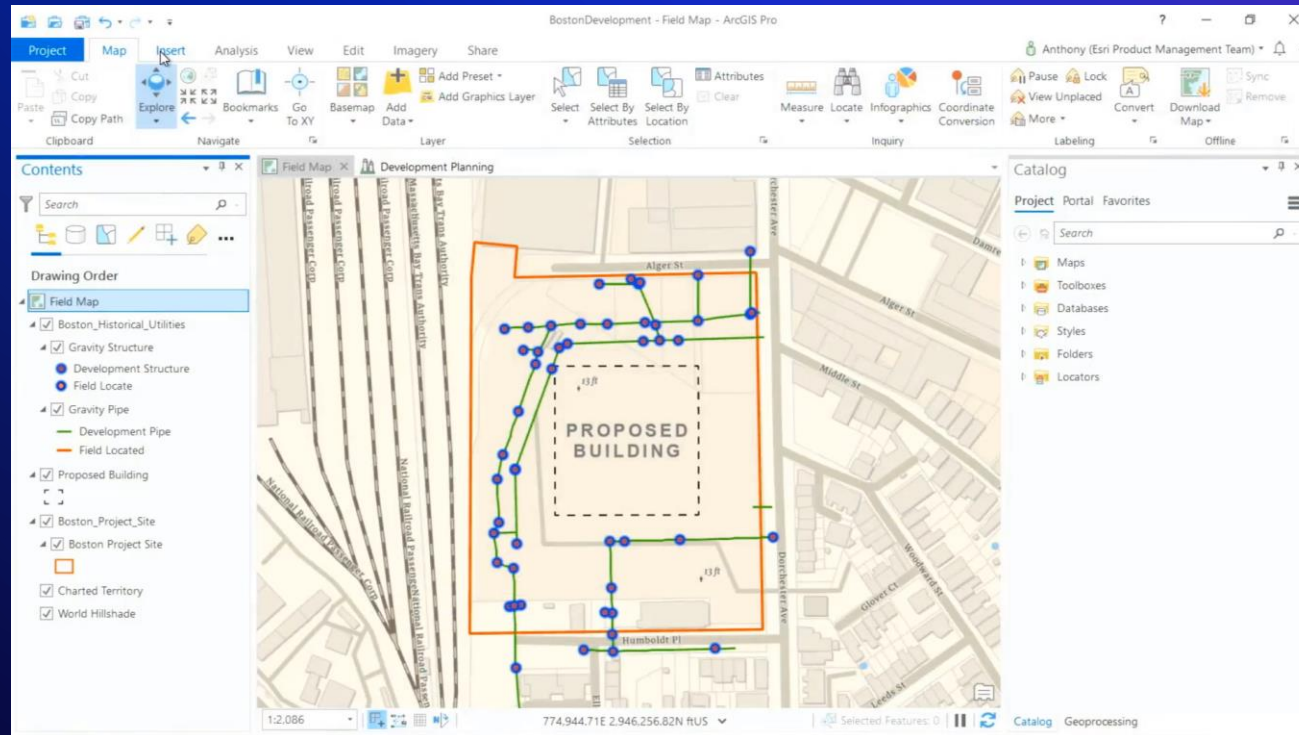
Directly Reading CAD & BIM...

...in ArcGIS Pro



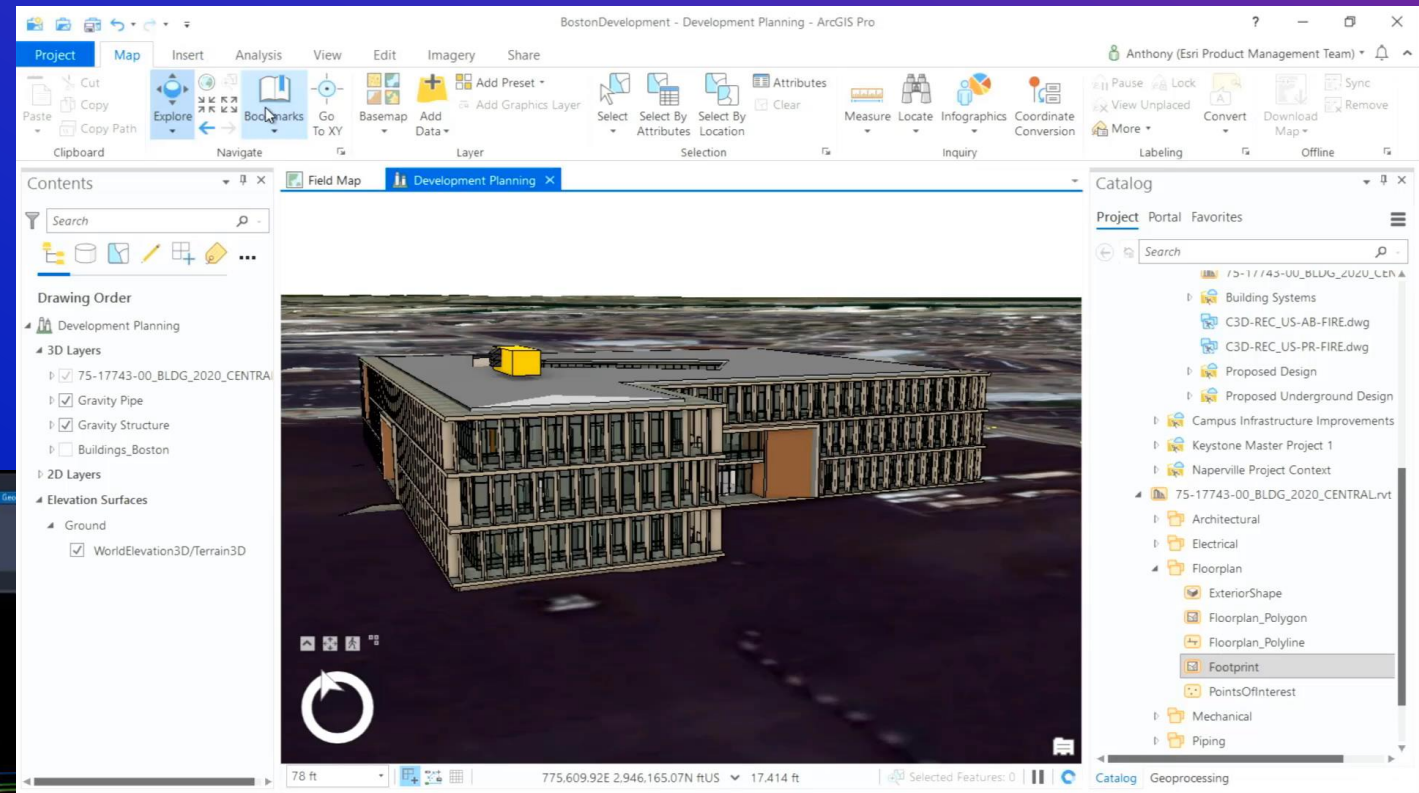
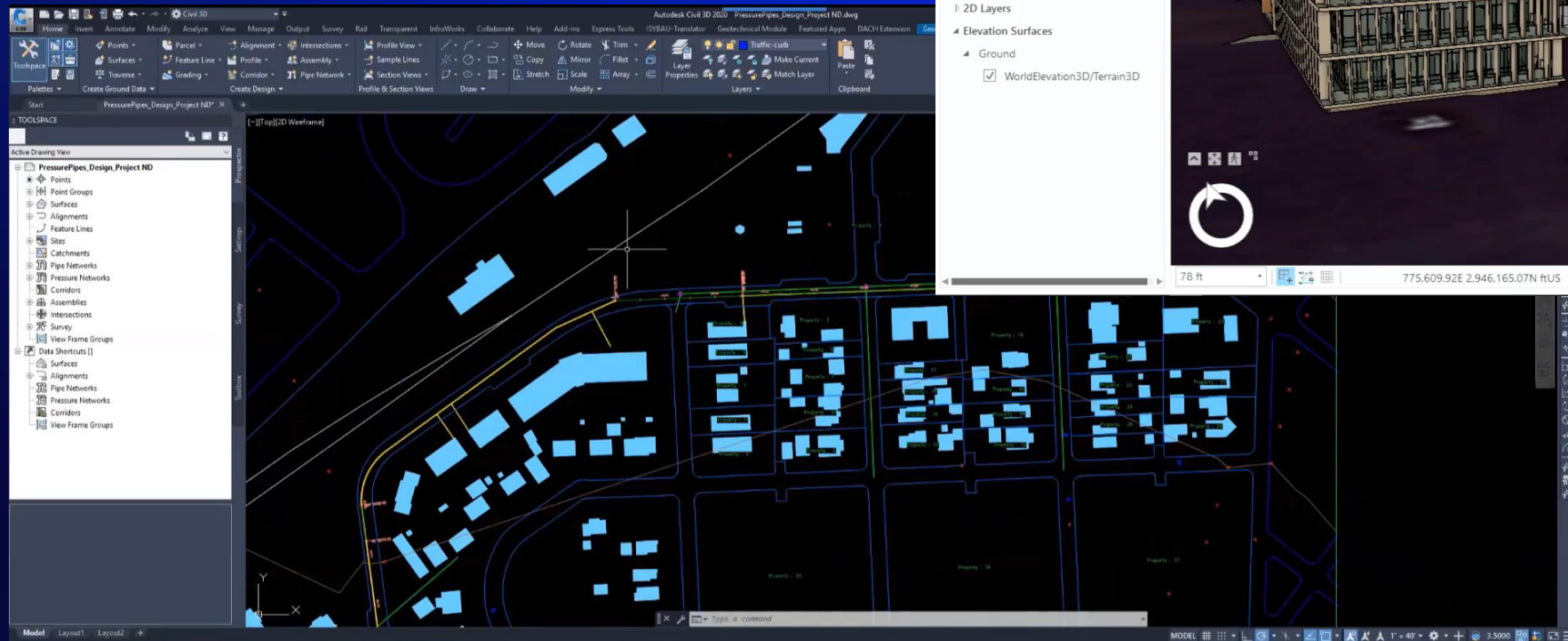


ArcGIS Pro Integration: BIM Cloud Connection



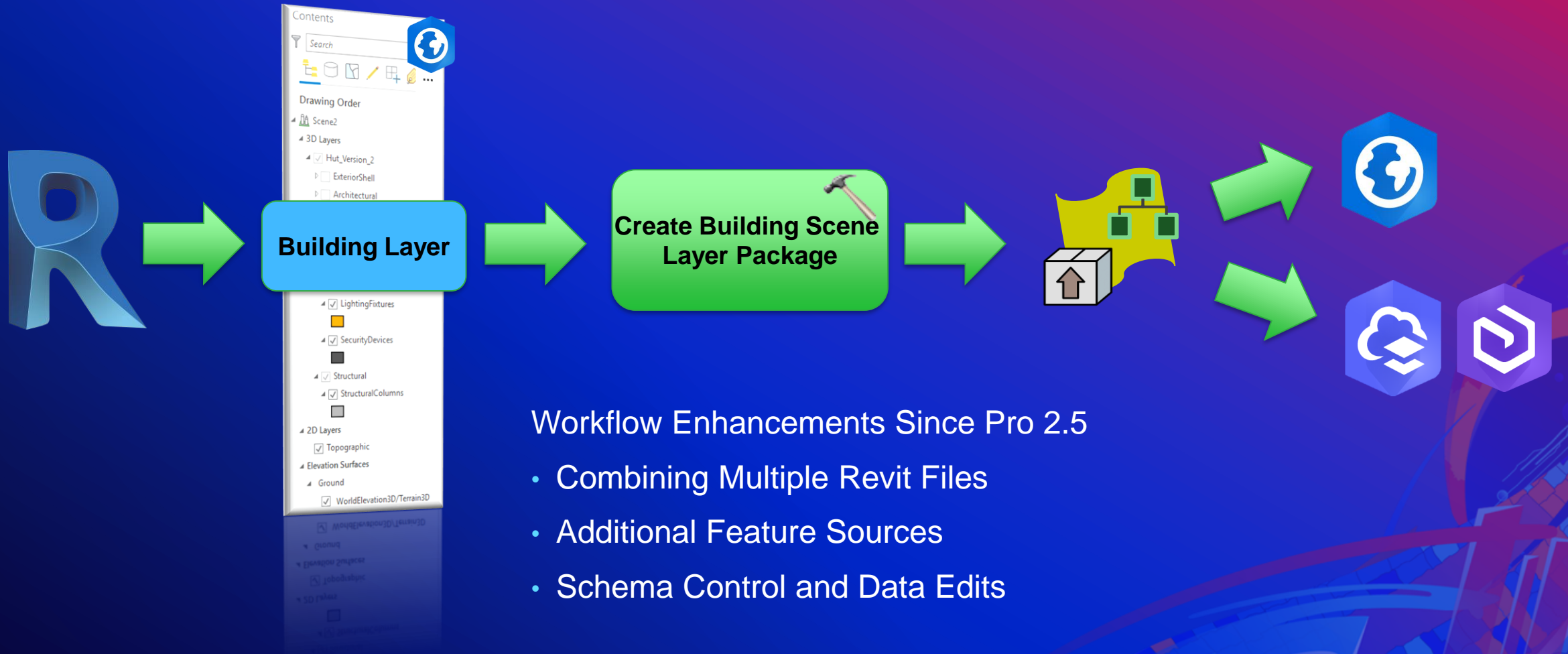


ArcGIS Pro Integration: Civil3D Support

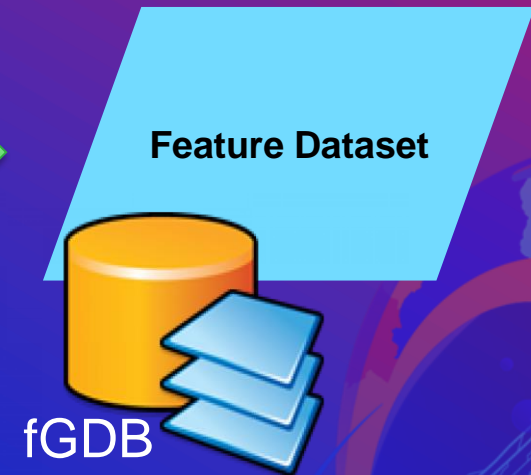
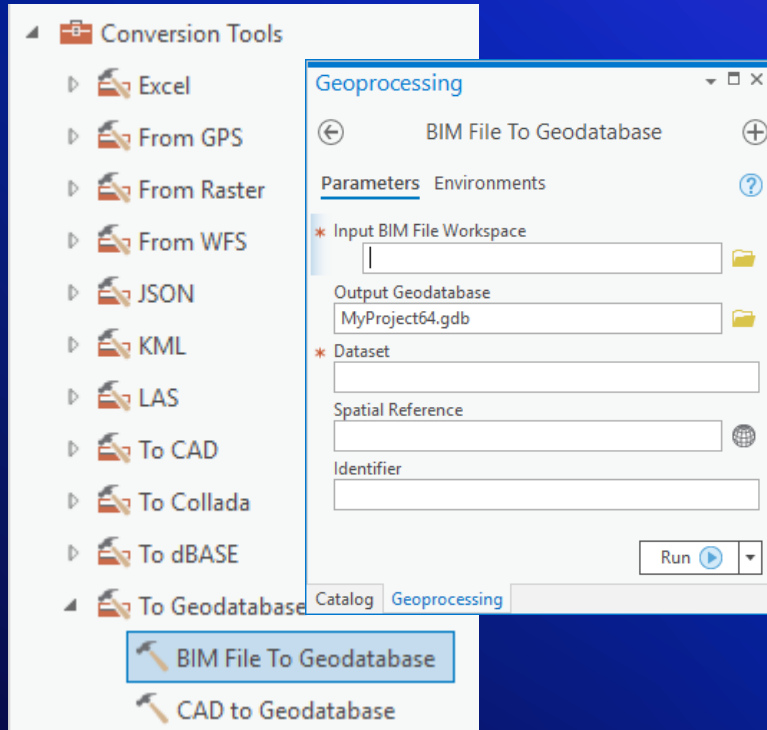




ArcGIS Pro Integration: Revit Support



BIM File to Geodatabase



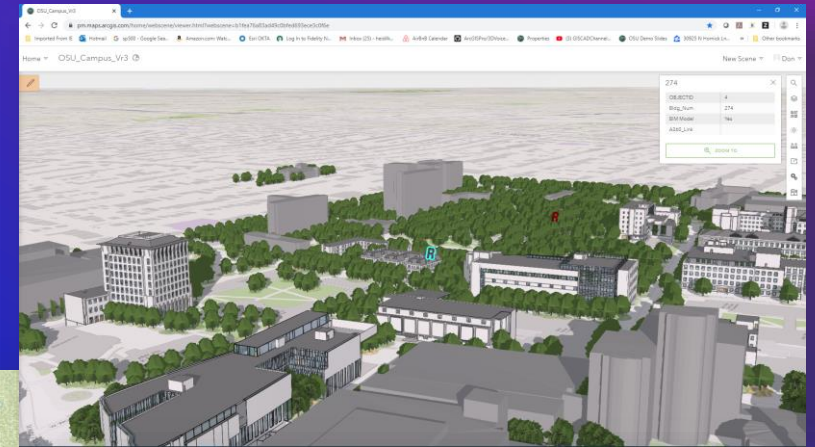
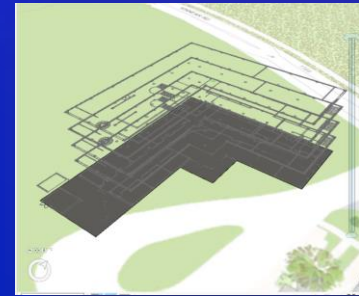


ArcGIS Pro: Revit Support Enhancements

ArcGIS Pro 2.5

Building Layers from Multiple Sources

- Skyscrapers
- Campuses
- Data Simplifications, Data Enhancements
- Integrate Additional *Building* Sources (IFC,GDB...)



ArcGIS Pro 2.6

Building Layer Management

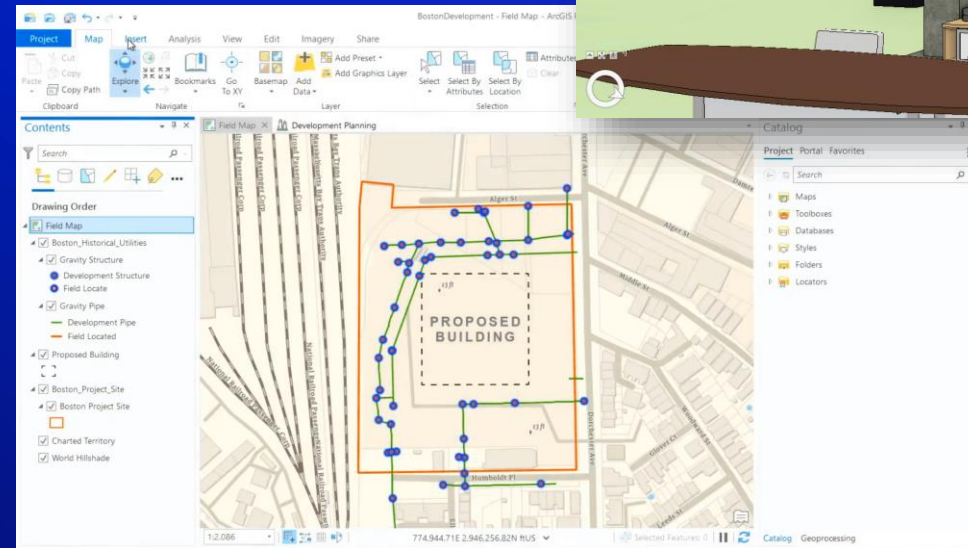
2.5D Objects as Assets/Features From RVT

- ArcGIS Indoors/IPS: Floorplans
- Site Mapping: Footprints, Building Object
- Asset Mapping: Points of Interest
- Colors/Textures



ArcGIS Pro 2.7

- Performance Enhancements
- RVT 2021 Support





Evaluate CAD

- Doors, walls, rooms...
- Topology
- Annotation
- Consistency



Evaluate Revit Floorplan

- Polygon
- Polyline
- Footprint
- Points
(of Interest)



2

Prepare

- Re-project
- Georeference
- Layer mapping
- Create indoor GDB
- Create indoor Dataset (*Future Pro 2.8*)



Import Floorplans to Indoors

INPUT: Indoor GDB

INPUT: Layer mapping Excel file

INPUT: Unique ID Delimer

OUTPUT: Updated indoor GDB



OR

Import BIM (content) to Indoors

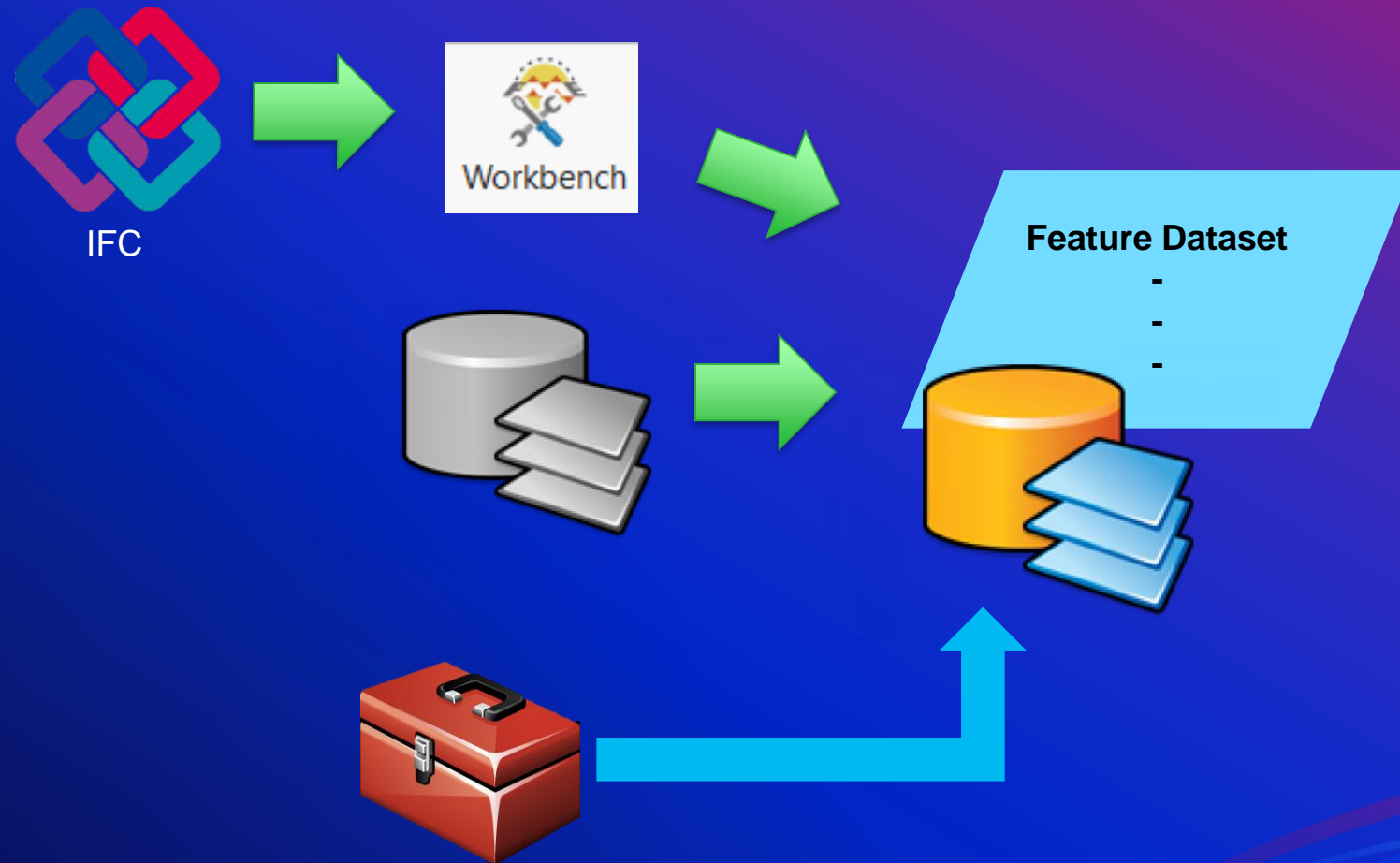
INPUT: Revit floorplan layer

INPUT: Indoor GDB or dataset

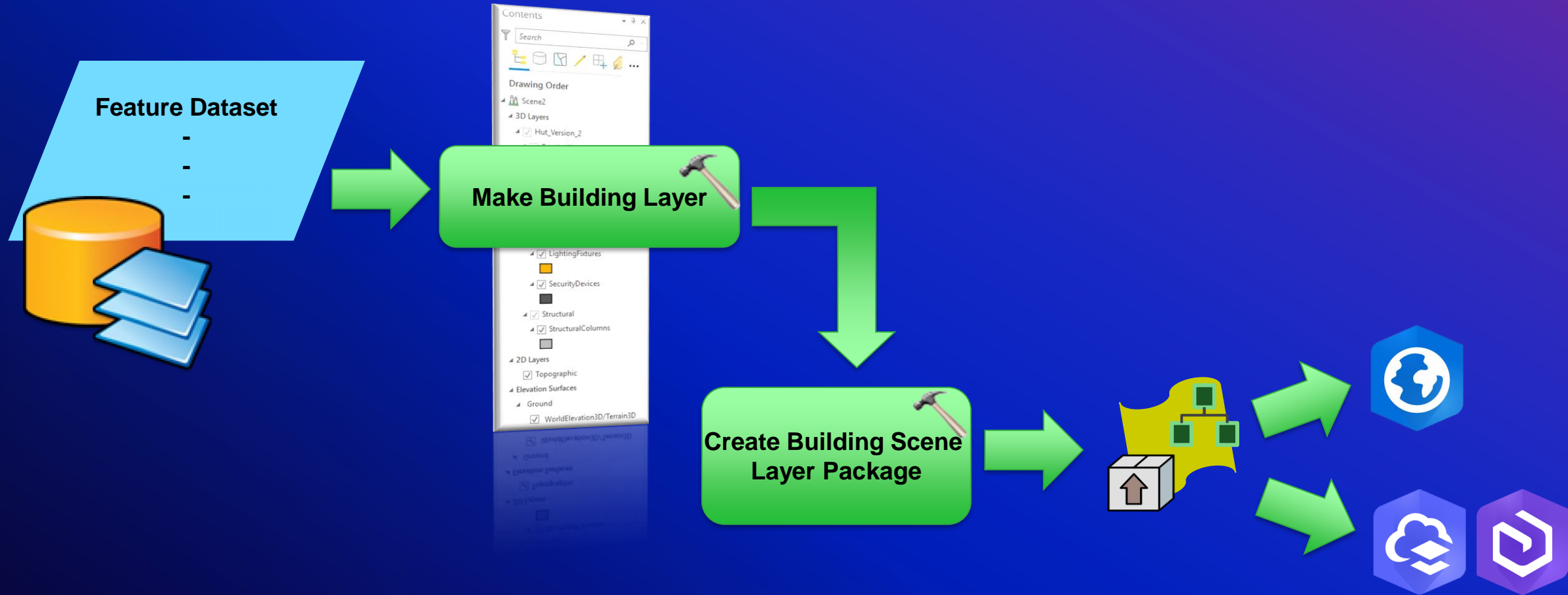
INPUT: Ground floor name

OUTPUT: Updated indoor GDB or dataset

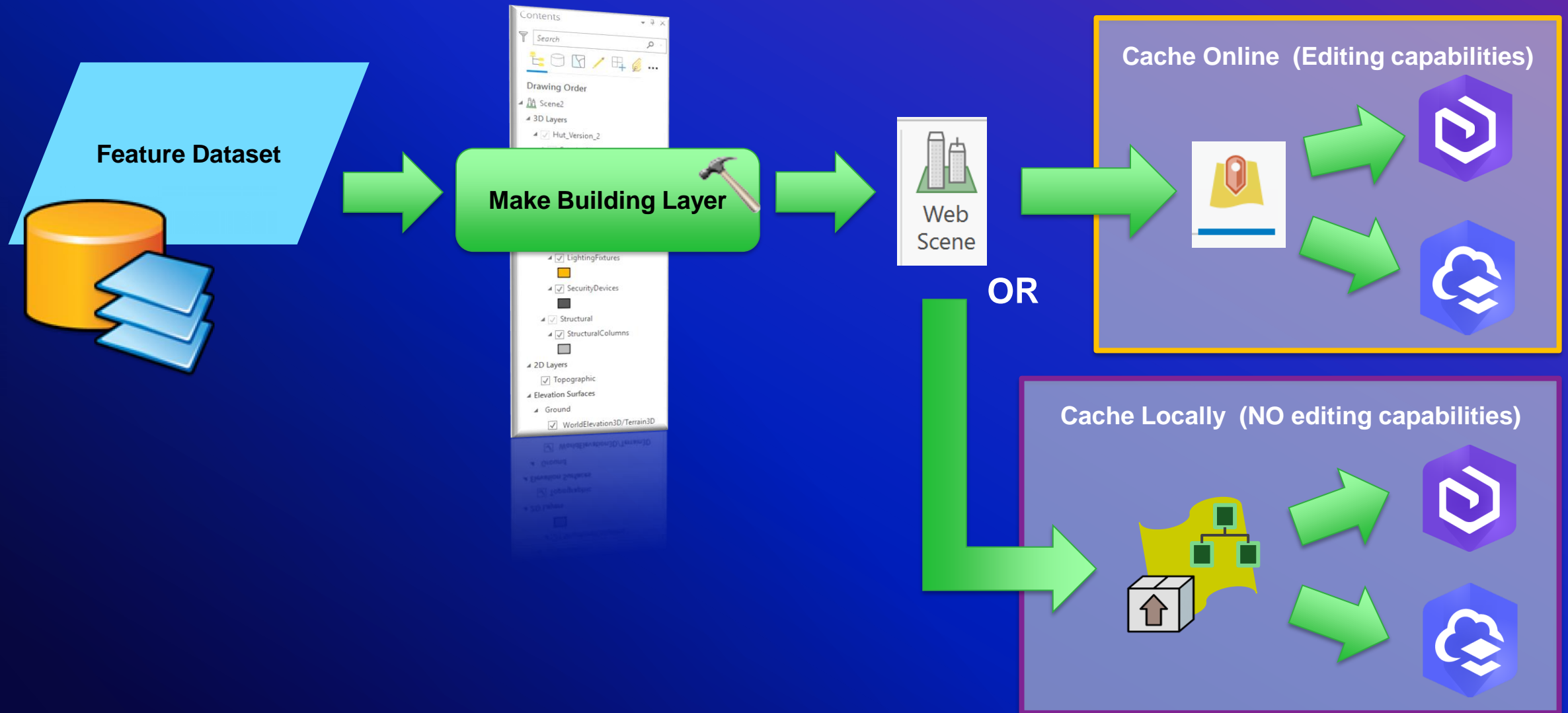
Enhance Dataset



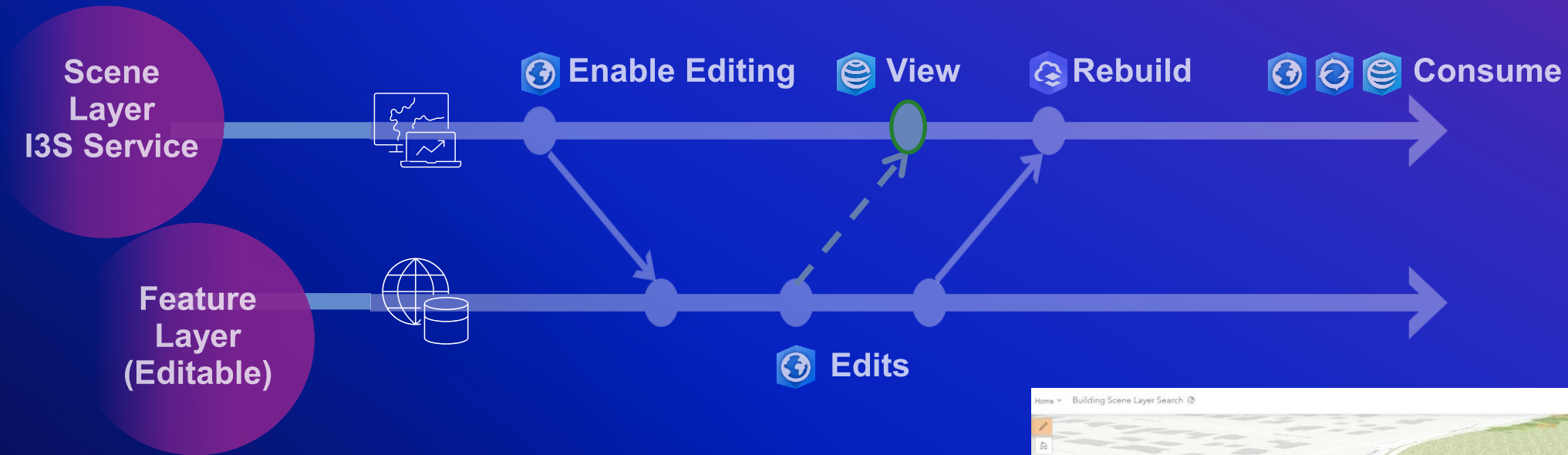
Make Building Layer & Scene Layer Pkg



New Share as Web Layer for Buildings



Maintain Scene Layer with Associated Feature Layer



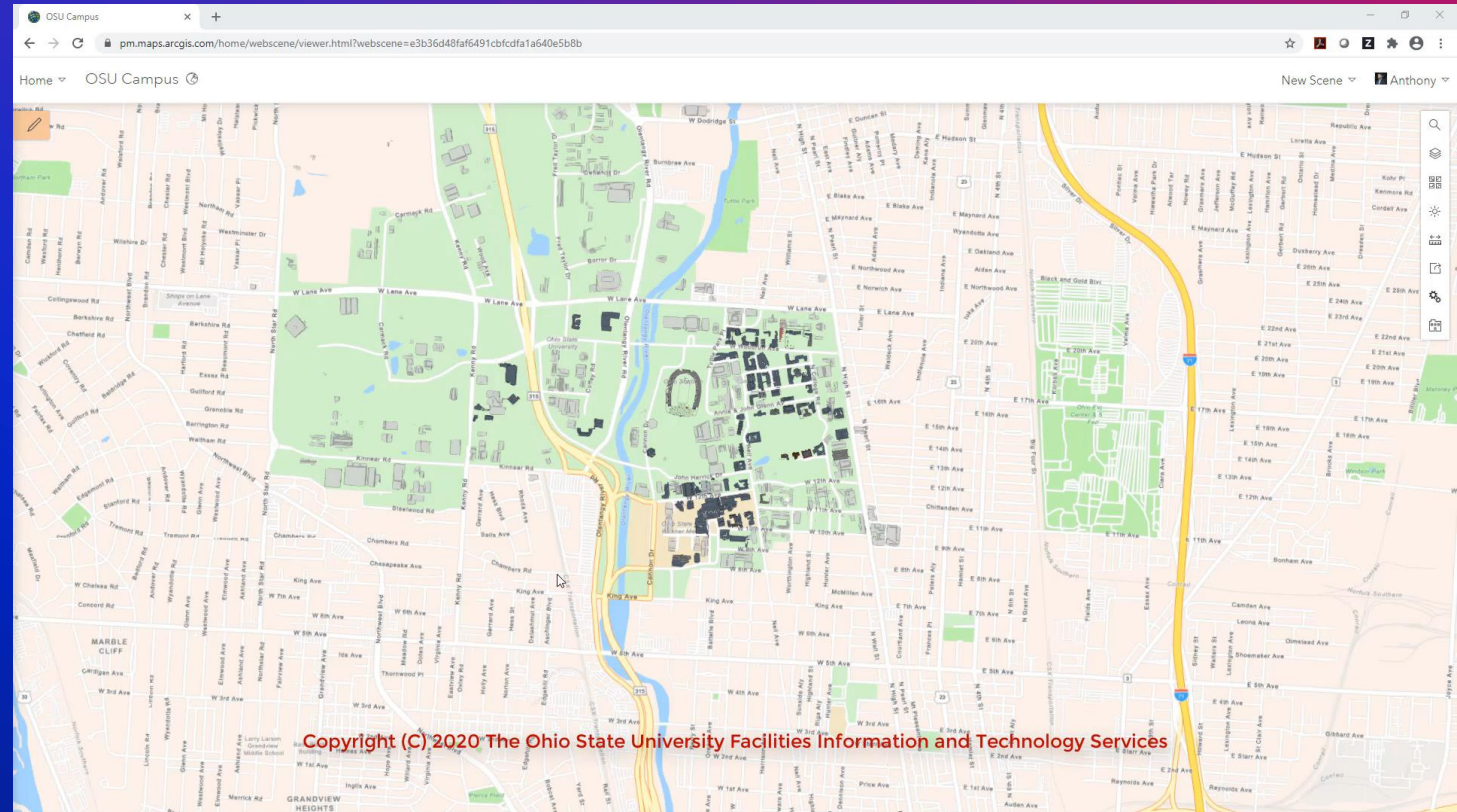
- Building Scene Layer with associated feature layer
- Author editable scene layer
- Rebuild Scene Layer Online with Partial Updates
- **NEW!** Scene layer refers to associated feature layer for web-configurable popups, symbology, and BSL Search!





ArcGIS Pro & Web: Building Scene Layer

- Building Scene Layer effort
 - Captures semantics, geometry, and attributes from BIM models into streamable 3D GIS format
 - Focused on MEP+A+S content from Revit and IFC
 - Adding colors, textures

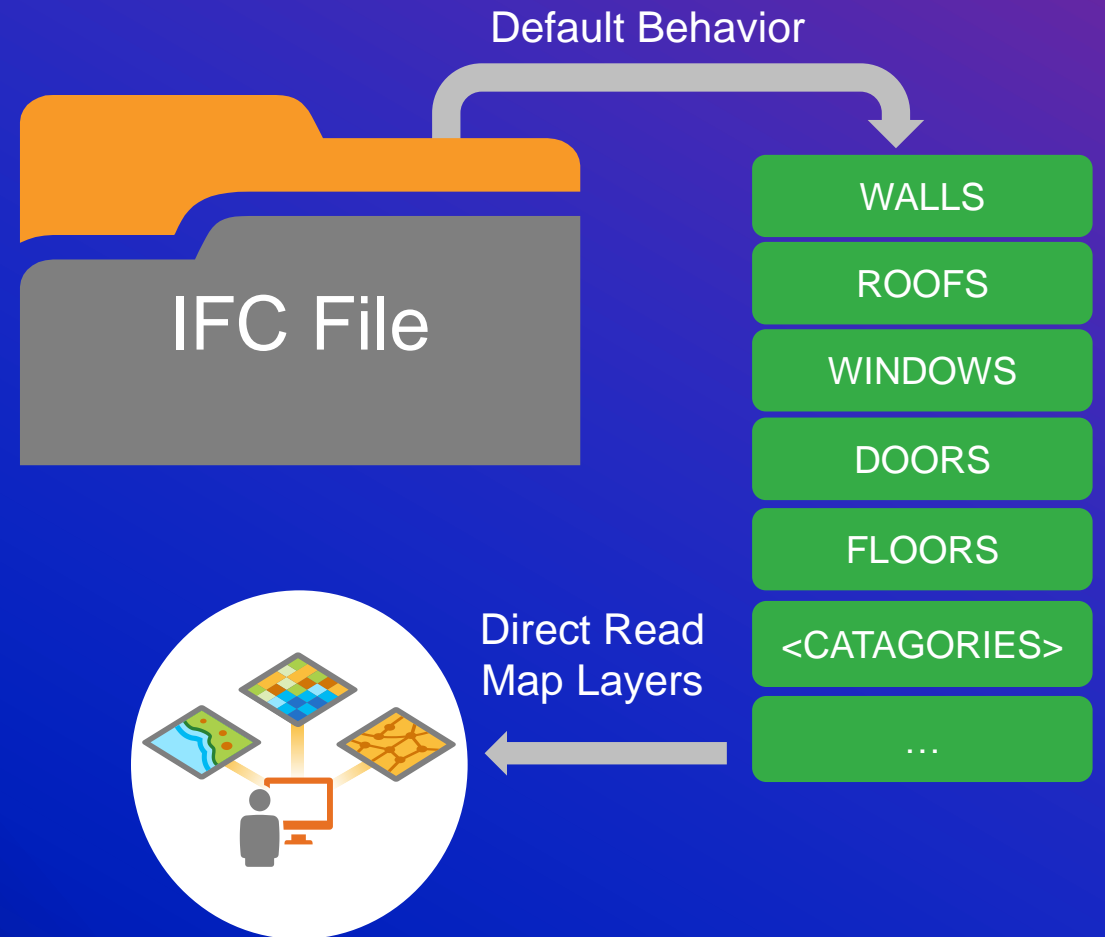




Next ArcGIS Pro Integration?



- Direct Read in Pro
 - Work to support IFC direct read as GIS features on import
 - Use in combination with Make Building Layer
 - This is only specific to Building IFC
 - Hold on other IFC types depending on future approved specs (Bridge IFC)



...Adding IFC Data in ArcGIS Pro

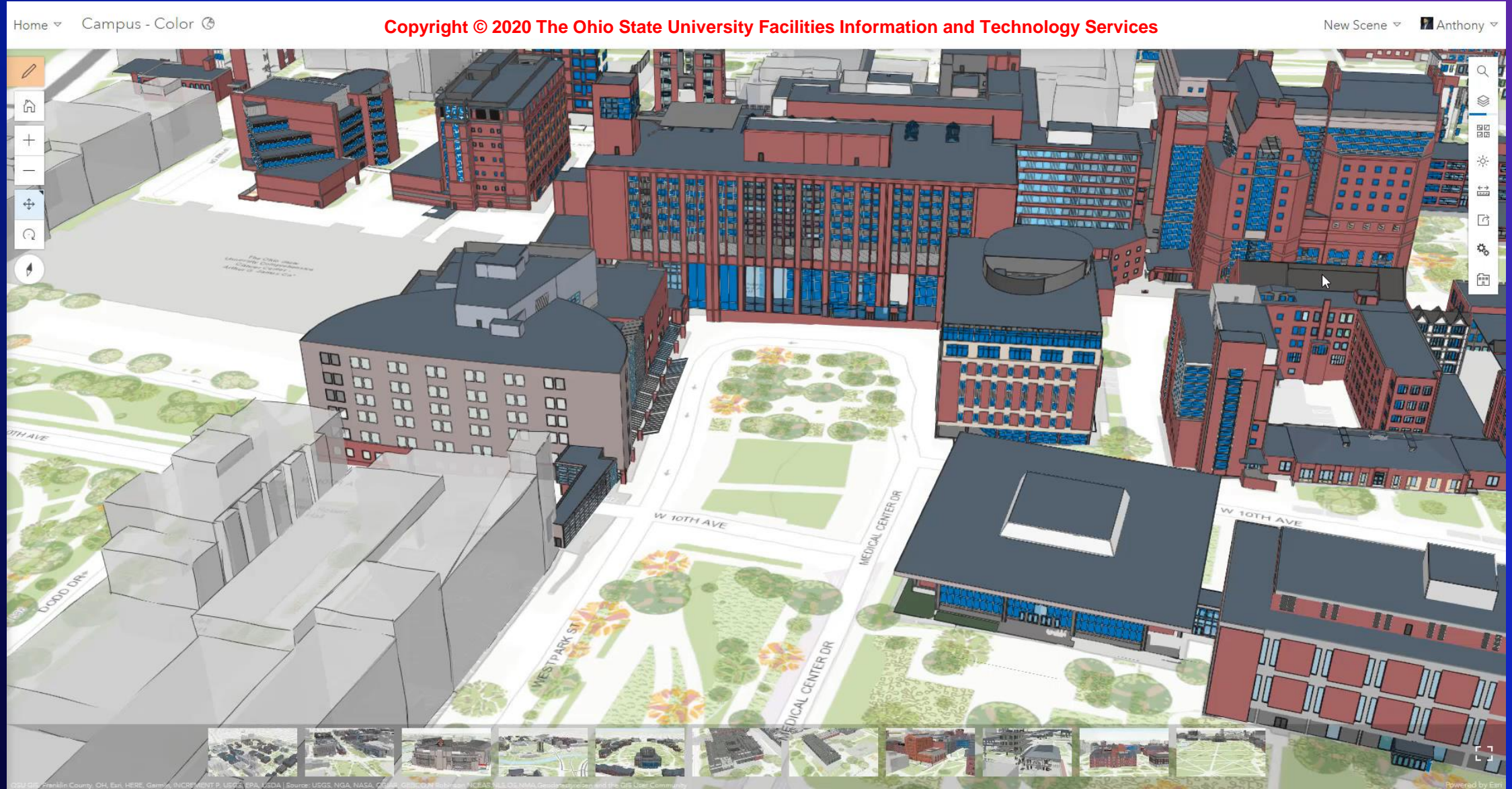
Esri Confidential



ArcGIS Driving Engagement

Through Web Services, Scenes, and More

The Ohio State University – 90+ Revit models in a single i3s Layer




Esri Partner Card in Autodesk BIM360

BIM 360 Insight


insight.b360.autodesk.com/accounts/8dad6bc3-5469-47d2-807c-d271972037f7/projects/2efc09c3-5265-4114-8cbc-7c1058e57abf/home

AUTODESK BIM 360 | Esri > Boston Development

Project Home



Customize



Esri
Boston Development


Project Dates: Wed Jul 31 2019 - Wed Dec 01 2021

Project Design Issues

| ID | Title | Due Date |
|----|---|--------------|
| 10 | Verify Existing Field Utilities | Oct 13, 2020 |
| 12 | Underground System Coordination with Foundation | Oct 14, 2020 |
| 9 | Change Lav Fixture Type in Restrooms | Oct 29, 2020 |
| 8 | Titleblock Missing Updates | Oct 30, 2020 |
| 7 | Sheet Set Listing Incomplete | Oct 30, 2020 |


5 of 7 Open Issues | View all (7)

Design Review Risk Factors




0

CODE COMPLIANCE




2

CRITICAL COMPONENTS




7

DOCUMENTATION INCOMPLETE




2

OVERDUE ISSUES




0

OVERDUE REVIEWS



Weather



Development Design

Maxar, Microsoft | Source: USGS, NGA, NASA, CGIAR, GEBCO, N Robinson, NCEAS, NLS, OS, NIMA, Geodatastyrelsen and th... Powered by Esri

New

Coming in 2021

ArcGIS GeoBIMSM Interconnects ArcGIS with Autodesk Construction Cloud

Cloud-to-Cloud Connectivity

Dynamically Integrating GIS & BIM Data...
... Helping to Achieve Digital Twin Integration

GeoBIM Projects



Apps



**AUTODESK
CONSTRUCTION
CLOUD™**

InfraWorks, Civil3D & Revit

ArcGIS
Online &
Enterprise



ArcGIS Pro

GeoBIM Apps

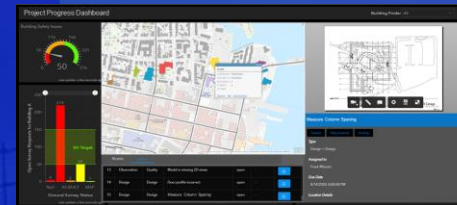
Issue Clustering



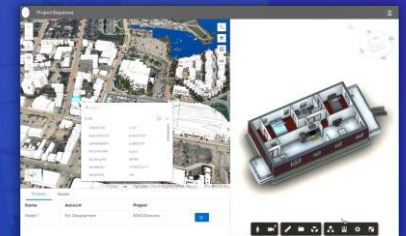
Documentation Review



Performance Dashboards

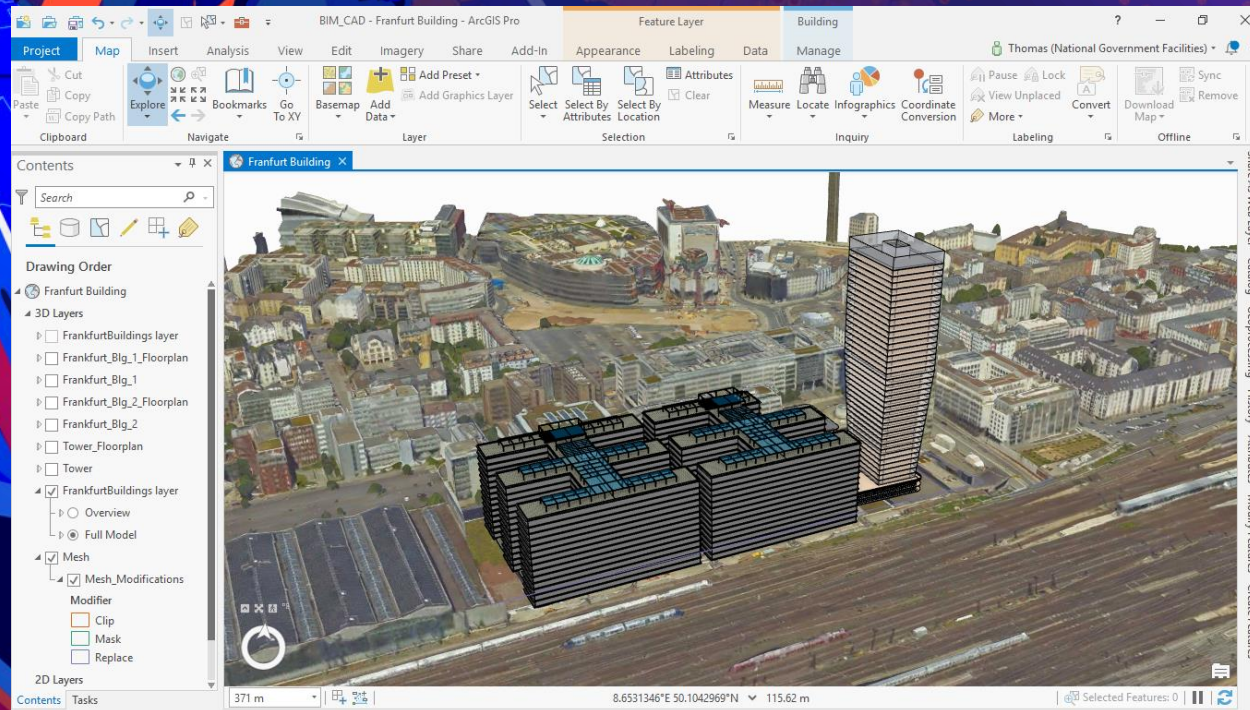


Design Coordination



Plan | Design | Build | Operate

Supporting Design, Construction and Operations . . .
... Transforming Projects with Geographic Context

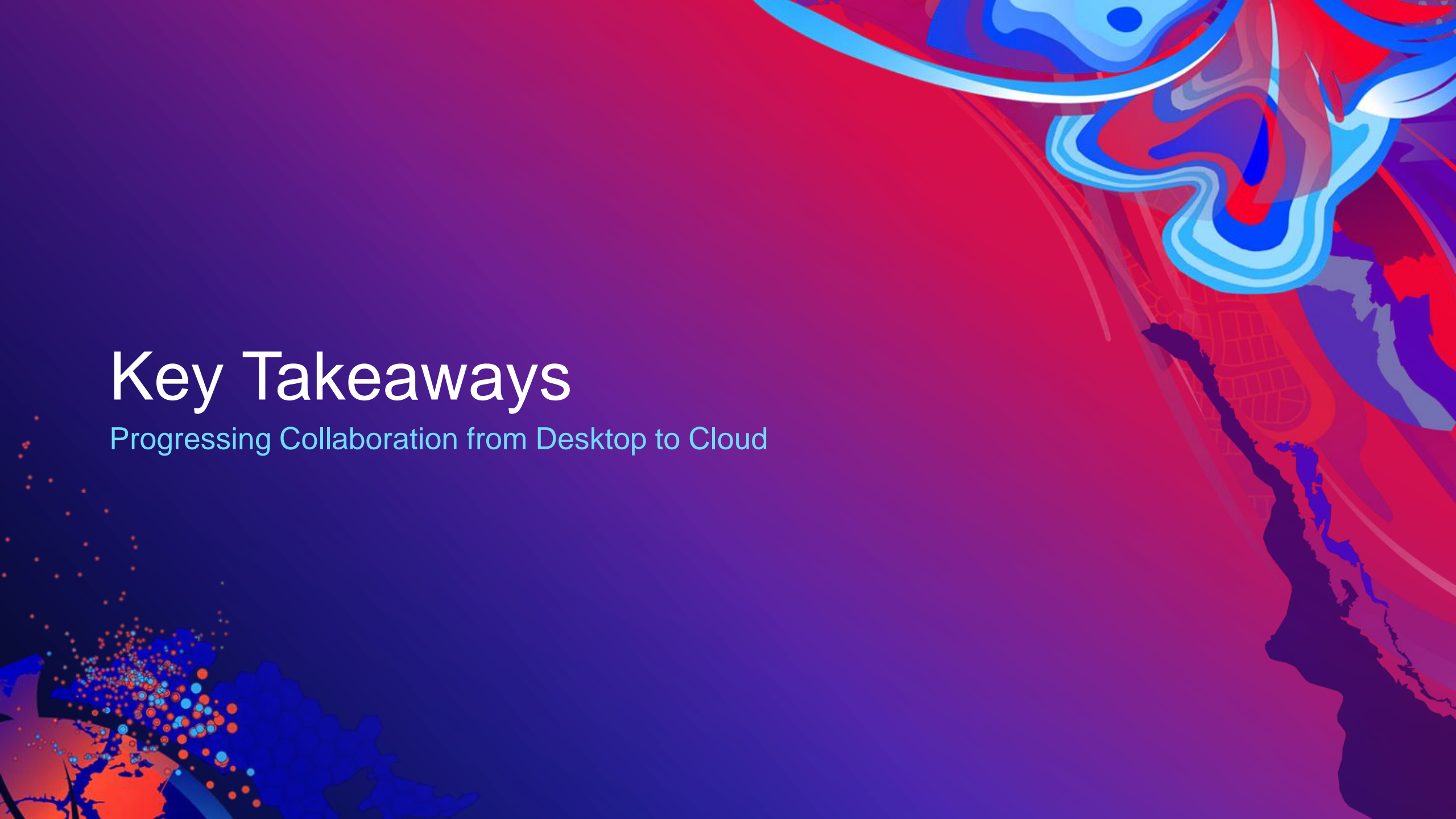


Demo

Combining BIM, CAD, GIS and
Sharing to Online Services

Key Takeaways

Progressing Collaboration from Desktop to Cloud



Value of GIS, CAD, BIM Integrations

- Building integrations focused on your workflows
 - Do more with your data whether you're using BIM or GIS content!
 - Solve problems & make evidence-based decisions faster
 - Break down internal/external silos
 - Digitally optimize existing workflows
 - Move data to the center of processes
 - Expose new opportunities to drive your business or organization



esri®

THE
SCIENCE
OF
WHERE®