

ArcGIS Experience Builder: Building Integrated Web Applications

Hannah Shumway & John Miller

What is ArcGIS Experience Builder?

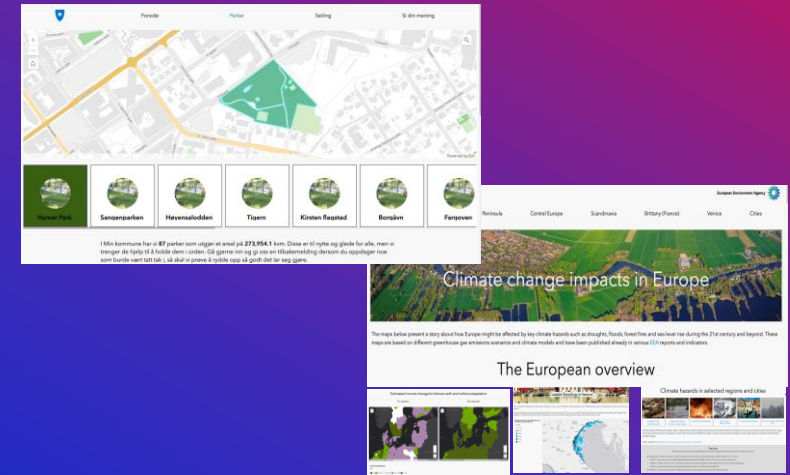
ArcGIS Experience Builder empowers you to quickly transform your data into compelling web apps and pages without coding.

- **Get started with templates and widgets, with customizable layout and design.**
- **Build your own templates with widgets.**
- **Extensibility**



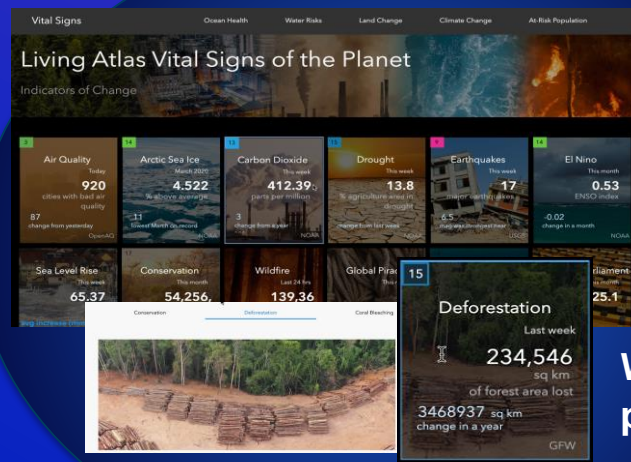
ArcGIS Experience Builder Key Features

- Create **flexible** web apps and pages easily
- **Integrate** 2D and 3D content into one app
- Build apps with **mobile-adaptive** design
- Configure out-of-the-box templates and widgets
- Customize widgets and templates to your needs

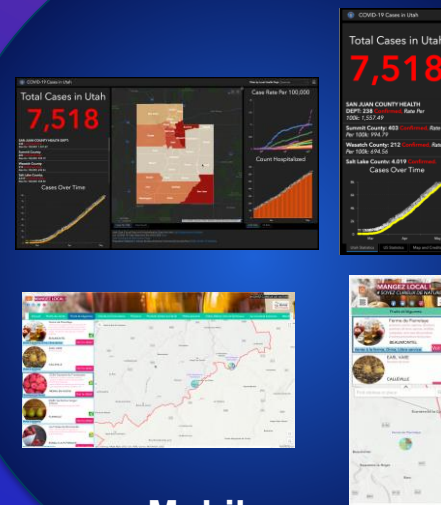




3D

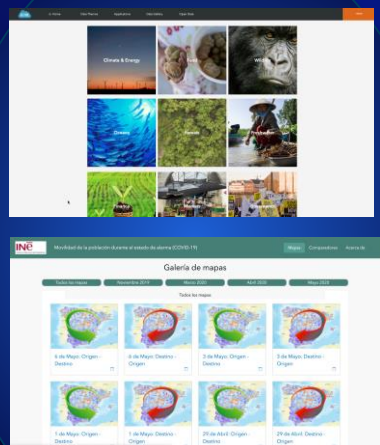
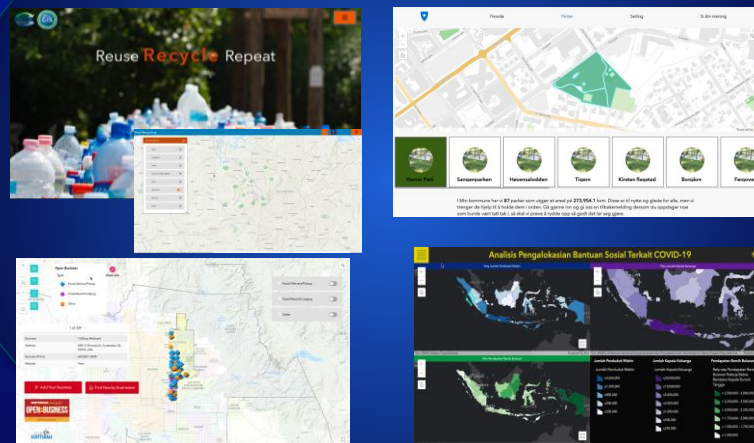


Web pages

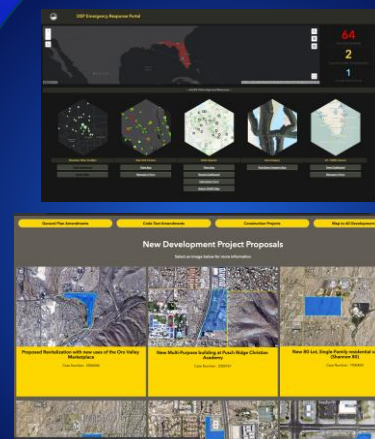


Mobile

Map-centric apps



Gallery



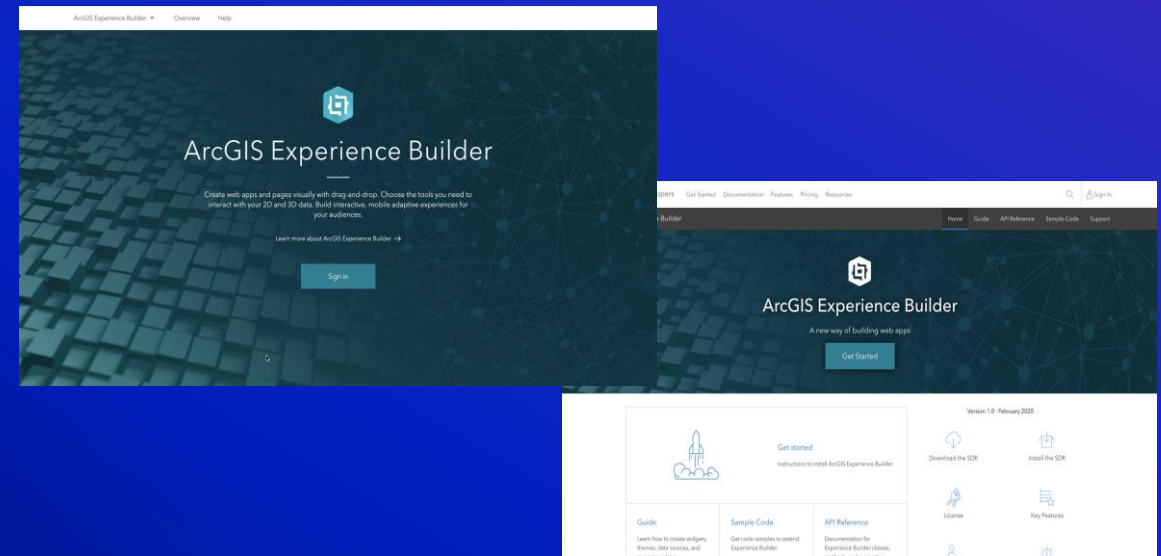
Portal



Survey

ArcGIS Experience Builder Editions

- ArcGIS Online and Enterprise
 - URL: experience.arcgis.com
 - ArcGIS Enterprise 10.8.1 and up
- Developer Edition
 - Download and install locally
 - Sign in to ArcGIS Online / Enterprise



ArcGIS Experience Builder Licensing



- **As part of the Essential Apps Bundle**
 - **Must have a Creator or GIS Professional user type to create experiences**
- **Through an ArcGIS Developer subscription**
 - **Allows developers that are not part of an ArcGIS organization to access and use Experience Builder Developer Edition**

Building Blocks

The background is a vibrant gradient of blue and red. On the right side, there is a stylized, abstract representation of a globe or map, with various shades of blue and red. In the bottom left corner, there is a cluster of small, colorful dots in shades of blue, orange, and red, resembling a starburst or a cluster of data points. The overall aesthetic is modern and digital.

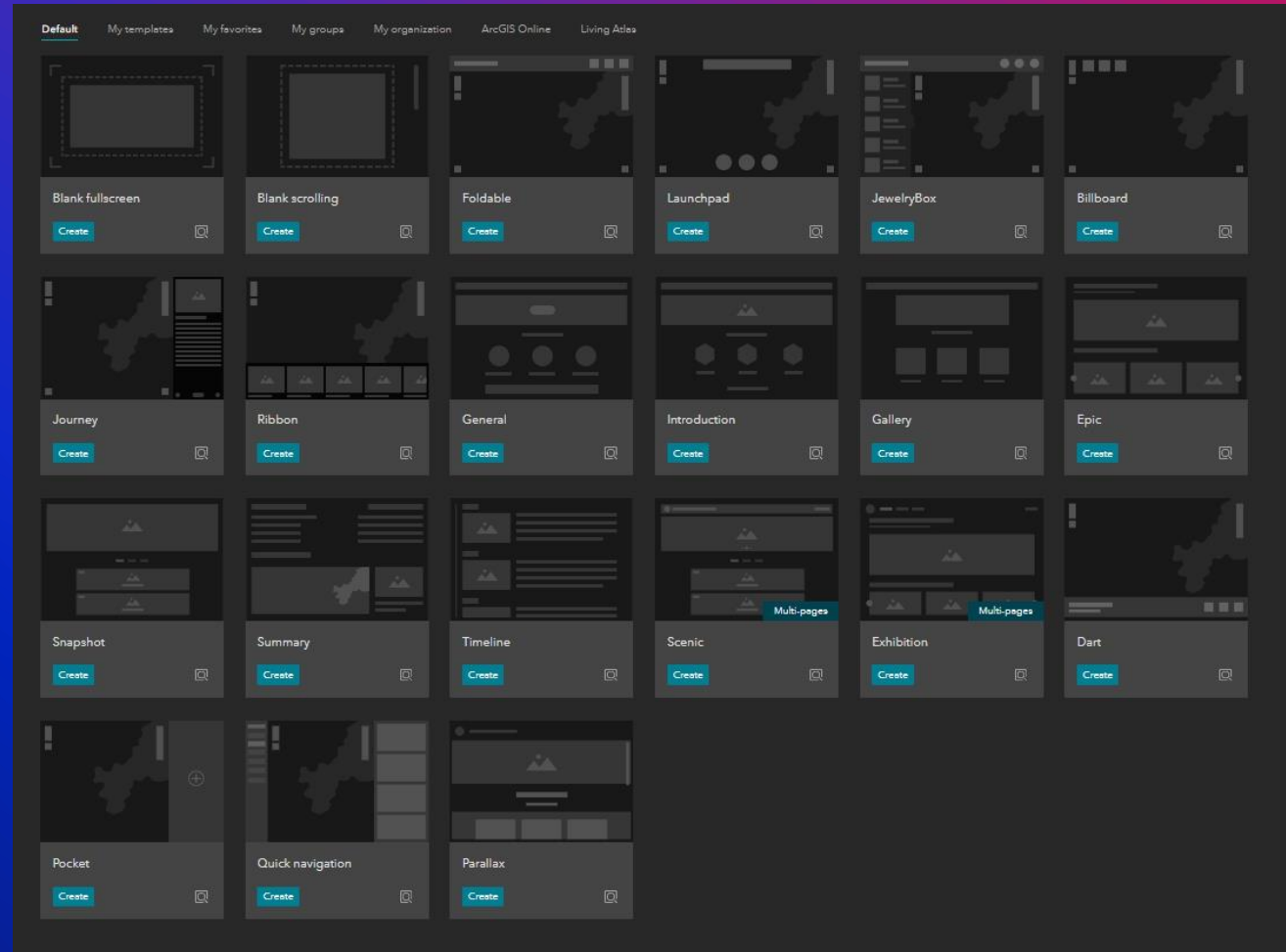
An
Experience

Design/
config



Templates

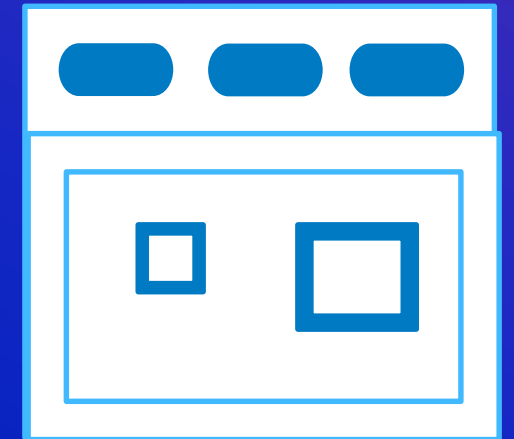
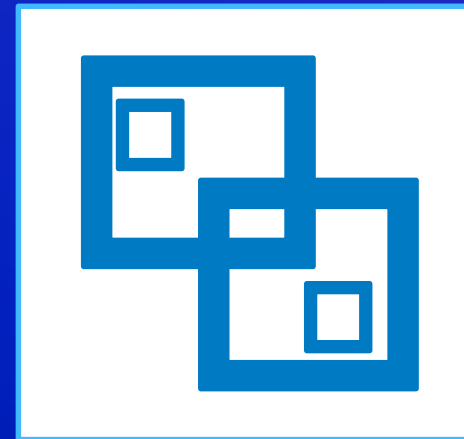
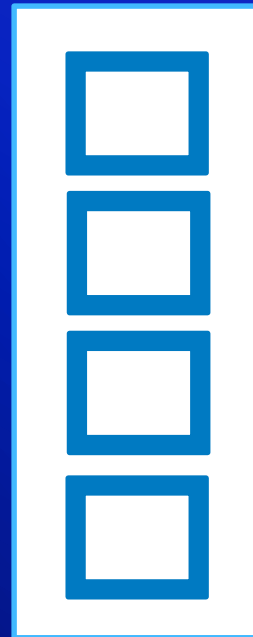
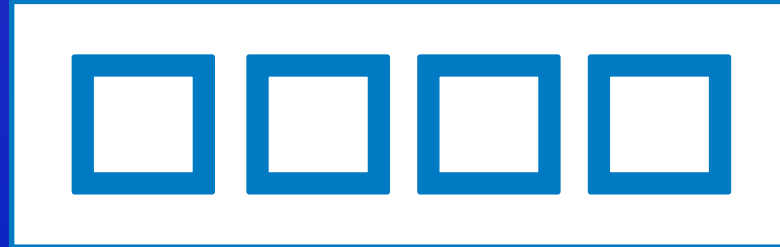
- **Full Screen (map-centric)**
 - Launchpad
 - Billboard
 - Dart
- **Scrolling Page**
 - General
 - Timeline
 - Parallax
- **Multi-page**
 - Scenic
 - Exhibition
- **Blank**



Widgets

Layout widgets:

- Row
- Column
- Fixed Panel
- Placeholder
- Sidebar
- Section
- View Navigation

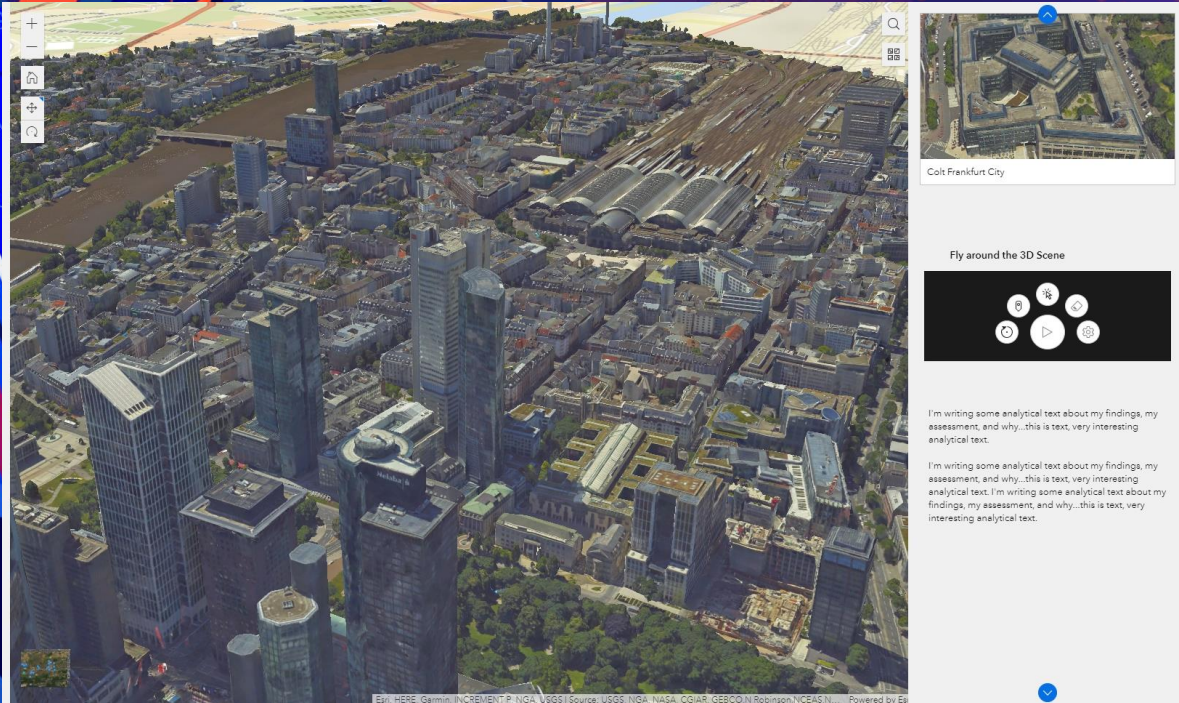


Widgets

Basic widgets:

- Map
- List
- Card New
- Filter
- Feature Info
- Fly Controller
- Legend
- Map Layers
- Bookmark New
- Share
- Survey
- Widget Controller
- Button
- Text
- Image
- Embed
- Menu
- Divider New
- Table (beta) New







Creating an interactive briefing from a template

Hannah Shumway

Theme

- Define a set of color and font
- Options to customize
 - Color
 - Font style 
 - Font size 

Default

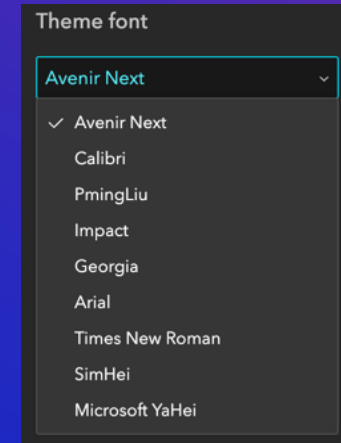
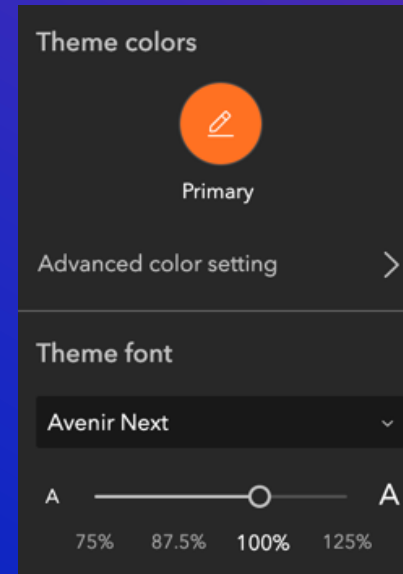
Dark

Vivid

Ink

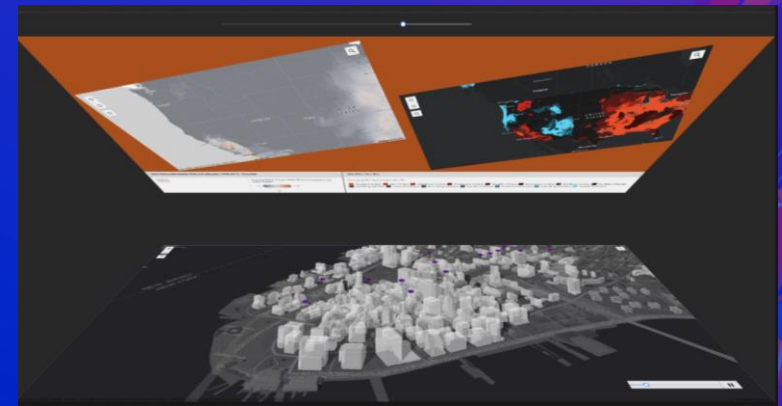
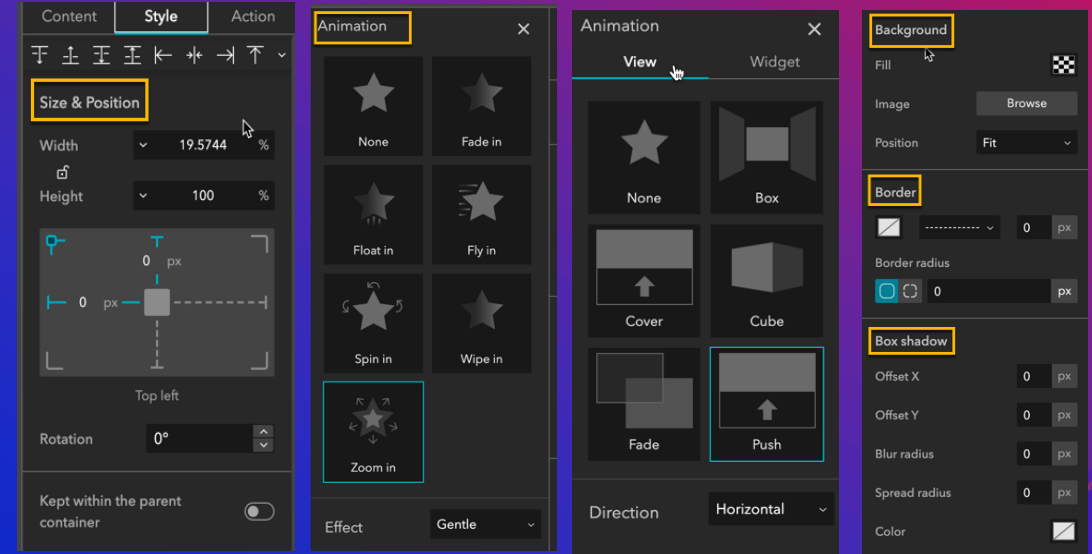
Mysterious

Shared



Style

- **Size and Position**
 - Width, Height, Rotation **New**, Kept within the parent container **New**
- **Animation** **New**
 - Visual effects
 - Transition (between views)
- **Background**
 - Fill and Image
- **Border**
- **Box shadow**



Triggers and actions

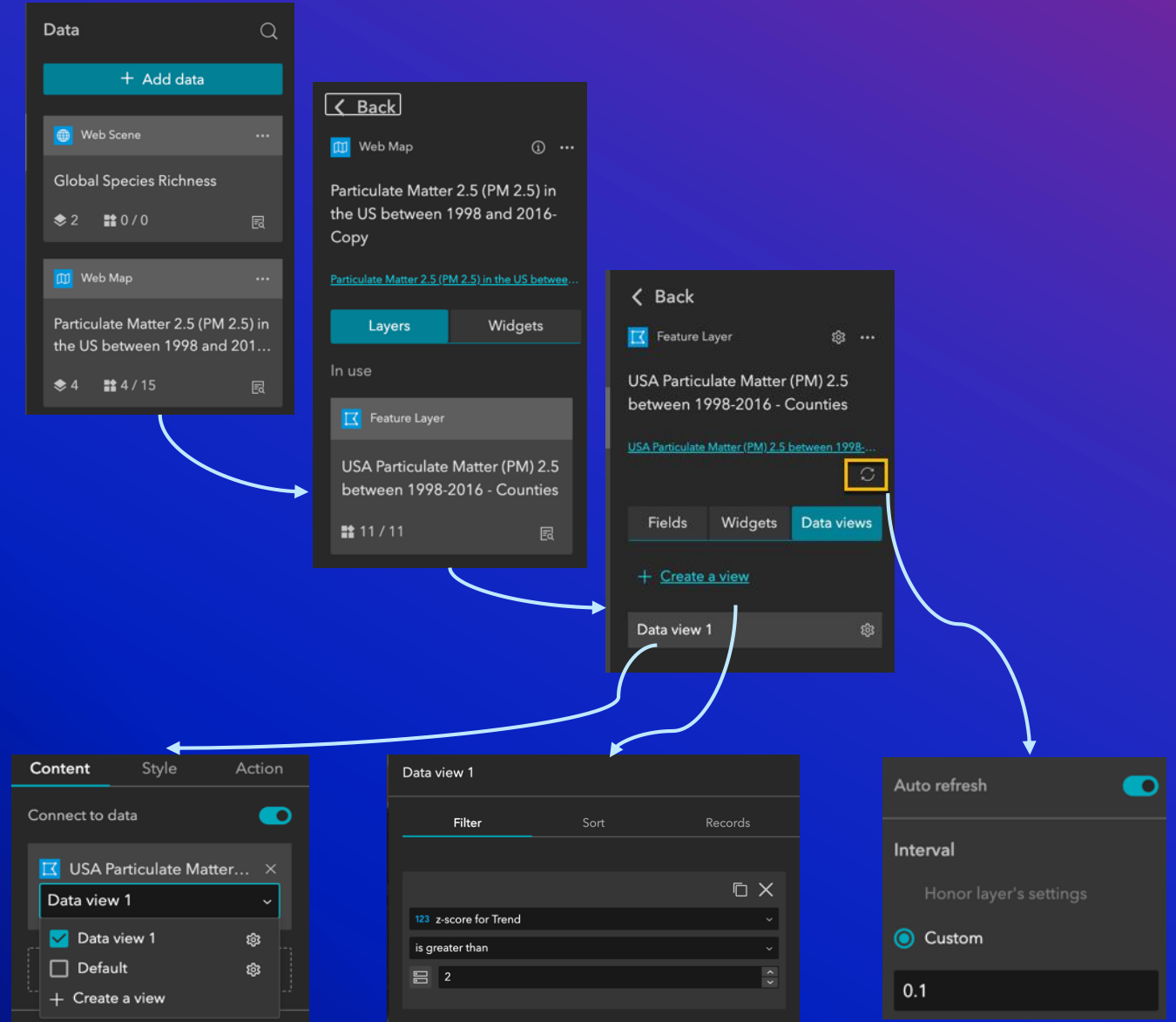
Source widget	Extent changes	Record selection changes
Map	✓	✓
List		✓
Feature Info		✓

Enable widgets to work together

Target	Action
Framework	Filter data records Select data records
Map	Pan to Zoom to Flash Filter
List widget	Filter
Feature Info widget	Display feature

Data sources

- Data shared at application level
 - Web map
 - Web scene
 - Feature layer and table
 - Item or URL
 - Auto refresh with intervals
 - More to come
- Show connections between widgets, layers, fields
- Create data view
 - Filtering
 - Sorting
 - Page size



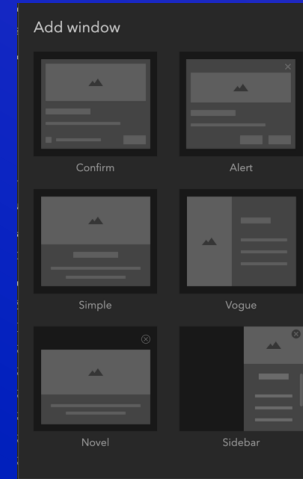
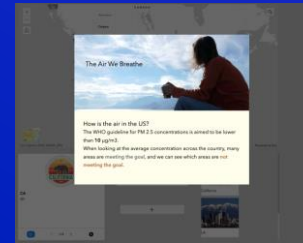
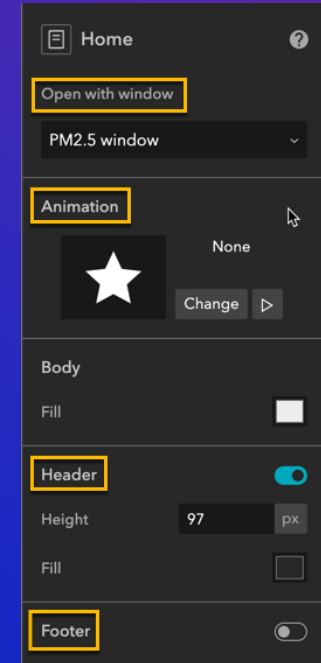
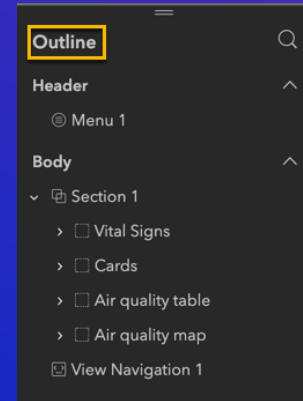
Page and Window

- Page

- Add new page from default templates
- Outline for widgets navigation on the page
- Header, Footer, Animation **New**, Open with window **New**, and Body properties

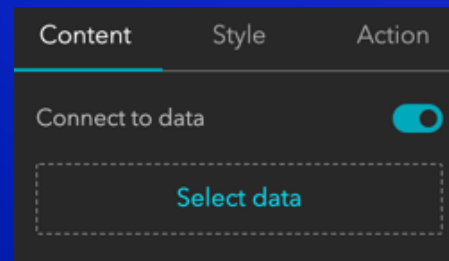
- Window **New**

- For splash screen or confirm/alert window
- Two modes
 - Fixed: display in a fixed position
 - Anchored: display around the widget that triggers it.

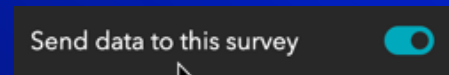


Display Dynamic Content

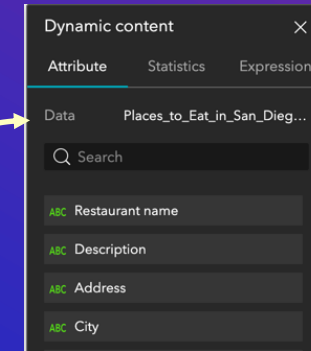
- Dynamically show a field or expression from a selected data source
- Supported widgets:
 - Survey
 - Embed
 - Text
 - Image
 - Button
 - List



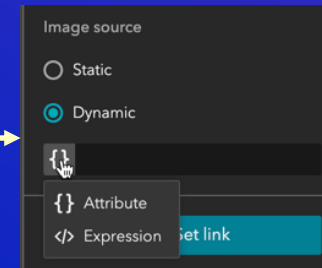
Data source



Survey

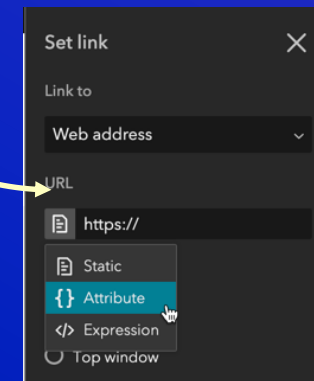


Text



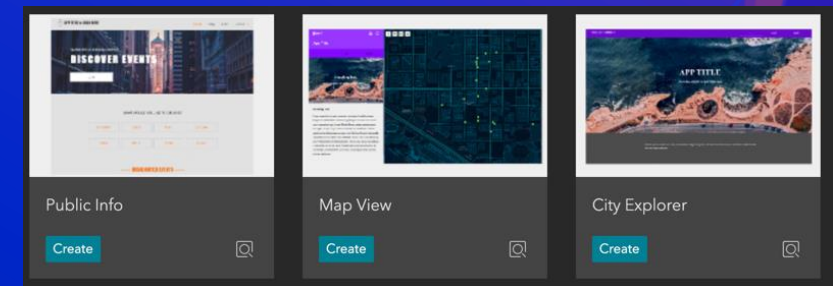
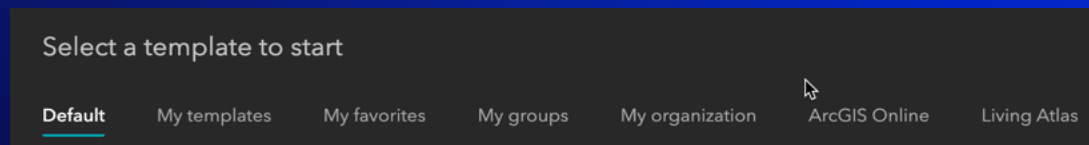
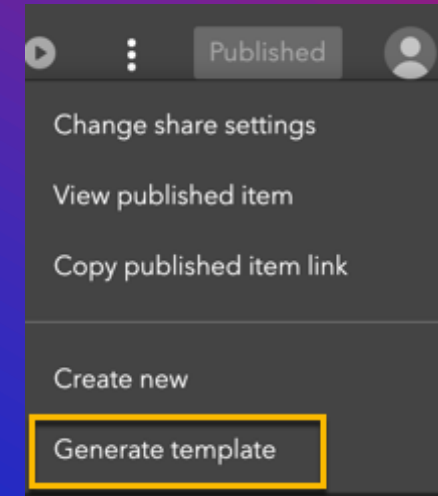
Image

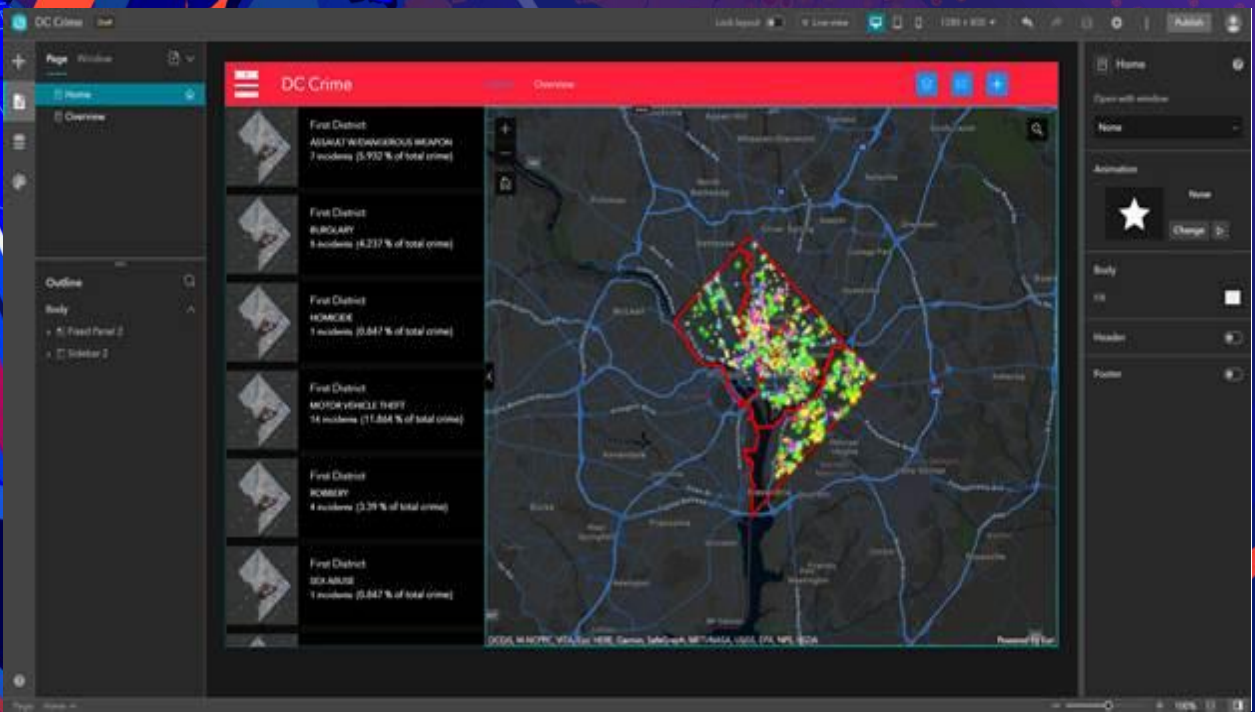
Set link for Button/Embed



Generate templates

- **Create your own starters**
 - Reusable templates
 - Theme properties for consistent branding
 - Sharing
- **Starter templates**
 - From the default templates
 - From shared templates
 - My organization, groups, public



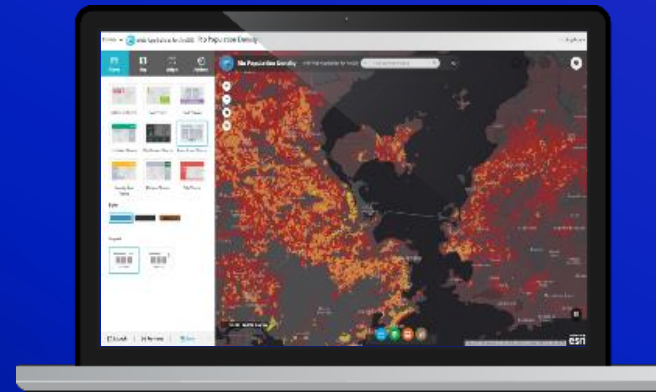
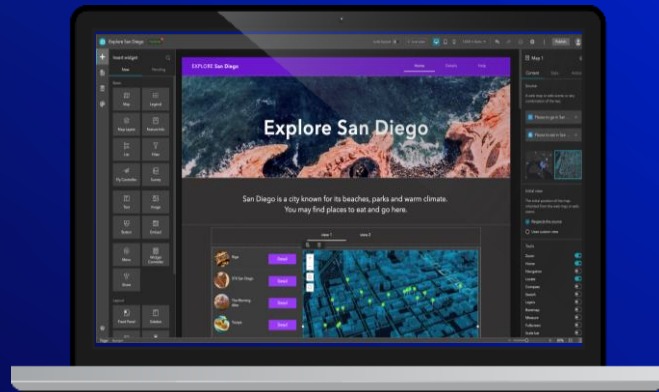


Demo 2

John Miller

FAQ

- **Will Experience Builder replace Web AppBuilder?**
 - For Online Edition, there is no plan to replace and obsolete Web AppBuilder. Both builders will be running and maintained in parallel. Web AppBuilder will continue to be available.
 - The Enterprise Edition follows ArcGIS Enterprise product life cycle
 - The Developer Edition follows ArcGIS API for JavaScript 3.x product life cycle.



FAQ

- **Can anything be transferred between Web AppBuilder and Experience Builder?**
 - You need to re-configure apps or rewrite custom widgets created with Web AppBuilder if you choose to move them to Experience Builder.
- **Will Experience Builder reach functional parity with Web AppBuilder?**
 - Starting with the core and popular widgets, Experience builder is planned to reach most of functional parity of Web AppBuilder through incremental releases.



FAQ Short List (Continued)

- What can only Experience Builder do and what can only Web AppBuilder do?
 - Flexible layouts, a mobile adaptive design, integrated 2D and 3D, and action triggers for widget communications are four key features in Experience Builder that are not available in Web AppBuilder. On the other hand, Web AppBuilder is empowered with 70+ widgets so you can quickly build your own workflow.

Take Away

- **With Experience Builder, you can do more than create compelling web applications. You can easily take your data and transform it into fully immersive experiences.**
- **You can generate reusable templates.**

Helpful Resources

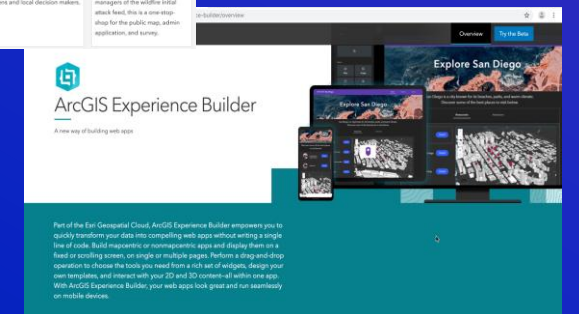
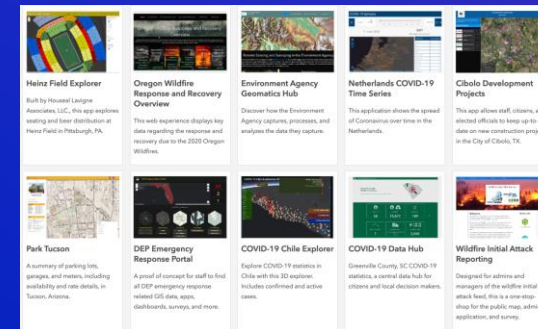
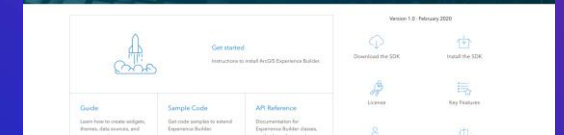
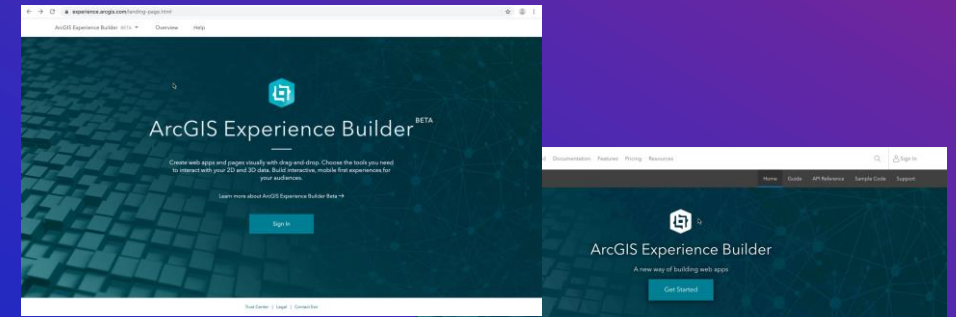
[User apps gallery](#)

[Experience Builder Online Edition](#)

[Experience Builder Developer Edition](#)

Video

- [UC 2020 Plenary Demo](#)
- [UC 2020-Building Integrated Web Solutions for Your Organization](#)
- [Dev Summit 2020 plenary demo](#)
- [FedGIS 2020 plenary demo](#)
- [Webinar-Getting started with Experience Builder](#)
- [Building Web Solutions using ArcGIS Experience Builder](#)



[FAQ](#)

[Blog](#)

[Product page](#)

[Community](#)



esri[®]

**THE
SCIENCE
OF
WHERE**[®]